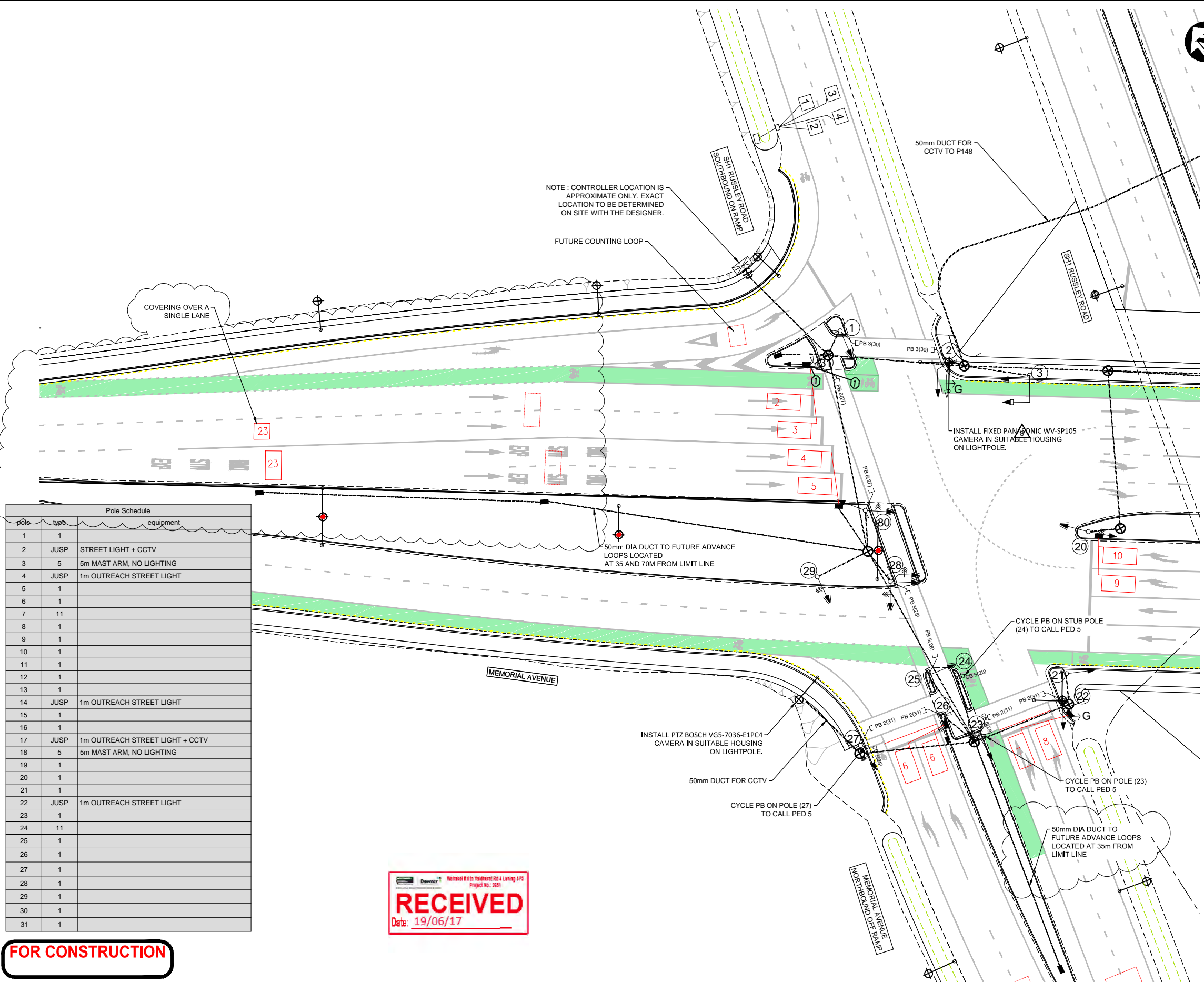


Document copyright of URS New Zealand Limited 2009 and may only be used for its intended purpose.

This design is based on generally accepted practices and standards at the time it was prepared. No other warranty, expressed or implied, is made. It is prepared in accordance with the design requirements outlined in the Contract dated 20th January 2011. No responsibility is accepted for use of any part of this design in any other context or for any other purpose.



- NOTES:**
- THIS DRAWING IS TO BE READ IN CONJUNCTION WITH THE COMPLETE PROJECT DOCUMENTATION SET, INCLUDING THE SPECIFICATIONS.
 - ALL TRAFFIC SIGNAL EQUIPMENT AND INSTALLATION SHALL COMPLY WITH THE NATIONAL TRAFFIC SIGNAL SPECIFICATION.
 - CONTROLLER AND POLE POSITIONS ARE INDICATIVE ONLY. FINAL LOCATIONS TO BE DETERMINED ON SITE BY THE ENGINEER.
 - ALL DUCTING UNDER ROAD CARRIAGEWAYS TO BE 2 BY 100mm UPVC ORANGE ELECTRICAL CONDUIT. FEEDER DUCTS MAY BE 32mm UPVC ORANGE ELECTRICAL CONDUIT.
 - SIGNAL DUCTING CHAMBER LOCATIONS ARE INDICATIVE ONLY AND SHOULD BE CONFIRMED ON SITE. CHAMBERS TO BE LOCATED OUT OF MAIN PEDESTRIAN PATHS AND AWAY FROM UNDERGROUND SERVICES.
 - ALL LANTERNS TO USE LED LAMPS
 - LOOPS 1 AND 14 ARE CYCLE LOOPS
 - POLES 5 AND 22 ARE STUB POLES HOUSING CYCLE PUSH BUTTONS. POLES 4, 12, 21 AND 25 ARE STANDARD POLES THAT ALSO HOUSE CYCLE PUSH BUTTONS.
 - CYCLE PUSHBUTTONS BE POSITIONED SO THAT THEY ARE ACCESSIBLE TO CYCLISTS.
 - REFER TO DRAWINGS C-11-003 & 004 FOR PHASING, DUCTING AND CABLE REQUIREMENTS.
 - CONTRACTOR TO CONFIRM CABLE RUNS AND CABLE CAPACITY REQUIREMENTS.

- LEGEND:**
- CONTROLLER
 - SIGNAL DUCT ACCESS CHAMBER
 - KERBSIDE JUNCTION BOX (K.J.B.)
 - POST AND POST NUMBER
 - POST WITH OVERHEAD STREETLIGHT (JUSP)
 - POST WITH OVERHEAD MAST ARM
 - ▶ 200mm ASPECTS - OPEN VISOR
 - ▶ 300mm ASPECTS - OPEN VISOR
 - ▶ ASPECTS WITH CLOSED VISOR
 - ▶ 3 ASPECT DISPLAY
 - ▶ 3 ASPECT DISPLAY WITH SINGLE GREEN ARROW DISPLAY
 - ▶ 3 ASPECT DISPLAY WITH THREE ARROW DISPLAY
 - ▶ 3 ASPECT DISPLAY WITH SUPPLEMENTARY ARROW DISPLAY
 - ▶ 3 ASPECT DISPLAY WITH SUPPLEMENTARY TWO ARROW DISPLAY (R, Y AND G INDICATE COLOUR OF ARROW DISPLAY)
 - ▶ 3 ASPECT DISPLAY WITH SUPPLEMENTARY THREE ARROW DISPLAY
 - C PB 6(27) PEDESTRIAN ASPECTS WITH PED PB AND INPUT NUMBER
 - ▶ PEDESTRIAN CALL BOX
 - P20 PEDESTRIAN CALL PAD AND INPUT NUMBER
 - 32mm DUCTING
 - 100mm DUCT
 - INDUCTANCE LOOP - STOPLINE LOOP AND LOOP NUMBER
 - INDUCTANCE LOOP - ADVANCE LOOP AND LOOP NUMBER
 - INDUCTANCE LOOP - CYCLE LOOP AND LOOP NUMBER

pole	type	equipment
1	1	
2	JUSP	STREET LIGHT + CCTV
3	5	5m MAST ARM, NO LIGHTING
4	JUSP	1m OUTREACH STREET LIGHT
5	1	
6	1	
7	11	
8	1	
9	1	
10	1	
11	1	
12	1	
13	1	
14	JUSP	1m OUTREACH STREET LIGHT
15	1	
16	1	
17	JUSP	1m OUTREACH STREET LIGHT + CCTV
18	5	5m MAST ARM, NO LIGHTING
19	1	
20	1	
21	1	
22	JUSP	1m OUTREACH STREET LIGHT
23	1	
24	11	
25	1	
26	1	
27	1	
28	1	
29	1	
30	1	
31	1	



FOR CONSTRUCTION



Rev	Revision Description	Designed	Drawn	Checked	Approved	Date
10	REVISED LAYOUT & LOOP POSITION	BS	HM	DA	-	19/06/17
9	CHANGE OF DETECTORS PLAN	BS	HM	DA	-	28/03/17
8	CHANGE OF TRAFFIC AND LIGHTING POLES	AL	AL	DA	-	20/12/16
7	CHANGE OF DUCTING AND CABLE RUNS	KvL	KvL	DA	-	20/12/16
1	FOR CONSTRUCTION	RT	MR	DA	AW	12/02/15

 MacDow Downer McConnell Dowell / Downer Joint Venture	 URS Phone: 3-374 8500 Fax: 3-377 0655	 NZ TRANSPORT AGENCY WAKA KOTAHI	NZTA 62185 WAIRAKEI ROAD TO YALDHURST ROAD 4-LANING	
			HAREWOOD ROAD TO AVONHEAD PARK TRAFFIC SIGNAL LAYOUT MEMORIAL INTERSECTION WEST (SHT 2 OF 4)	Status CONSTRUCTION Drawing Number C-11-002 Revision 10