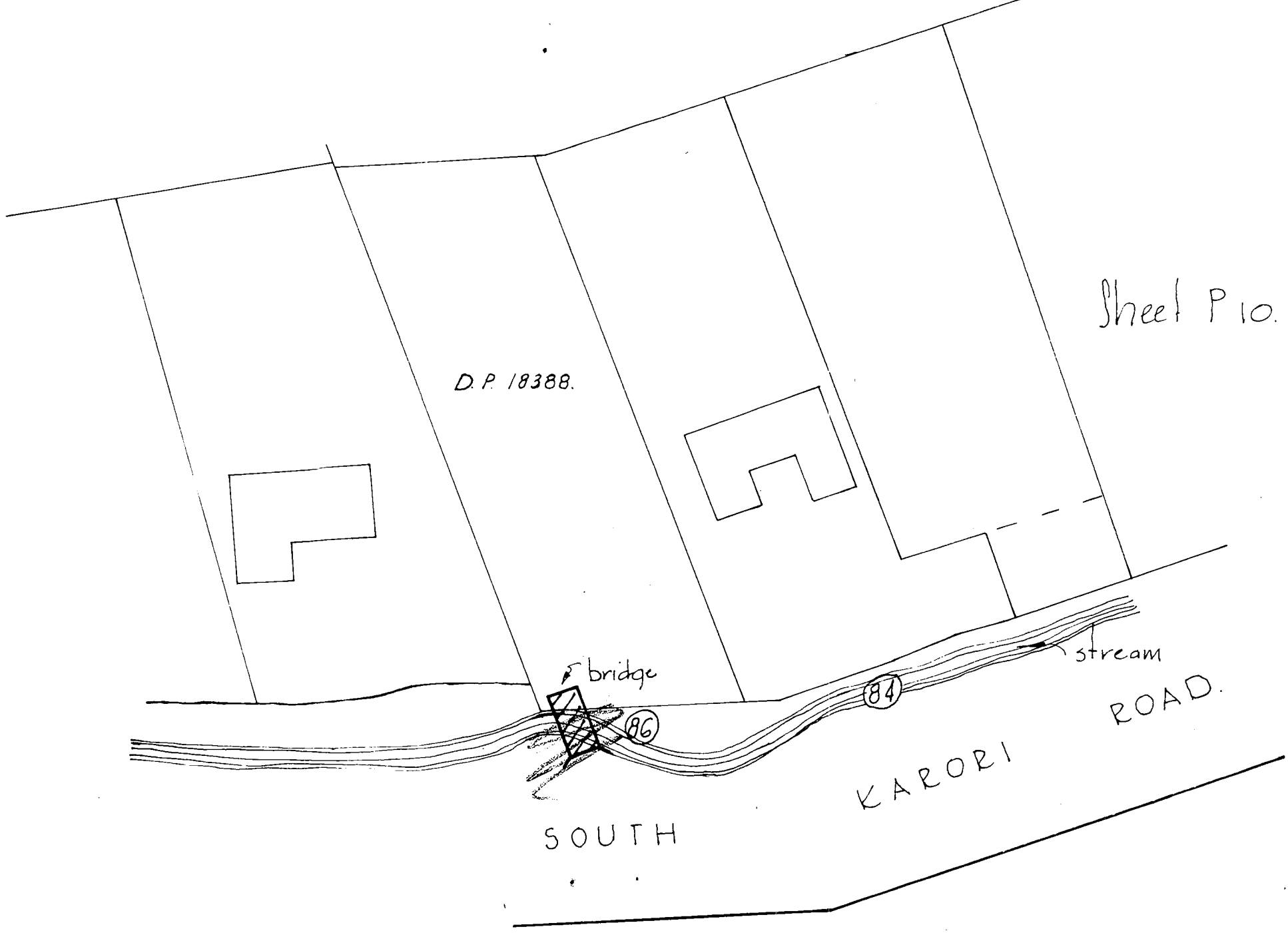
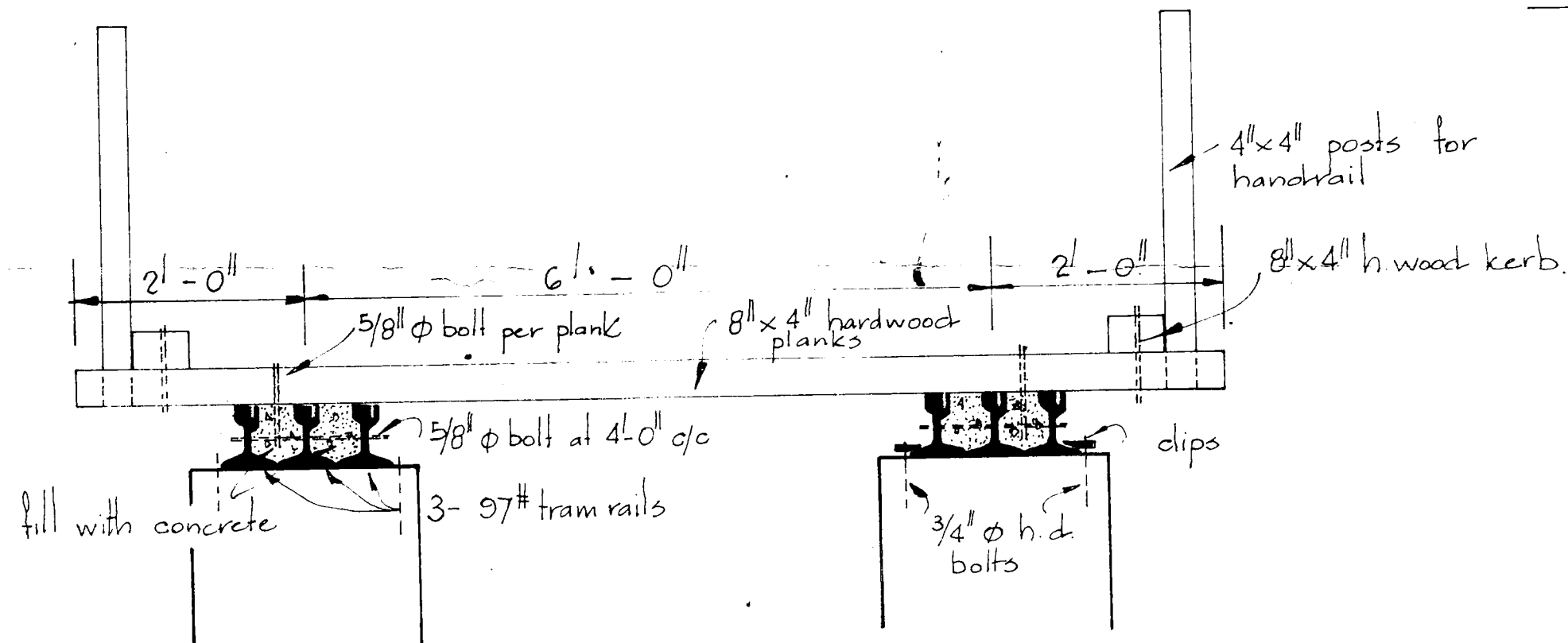


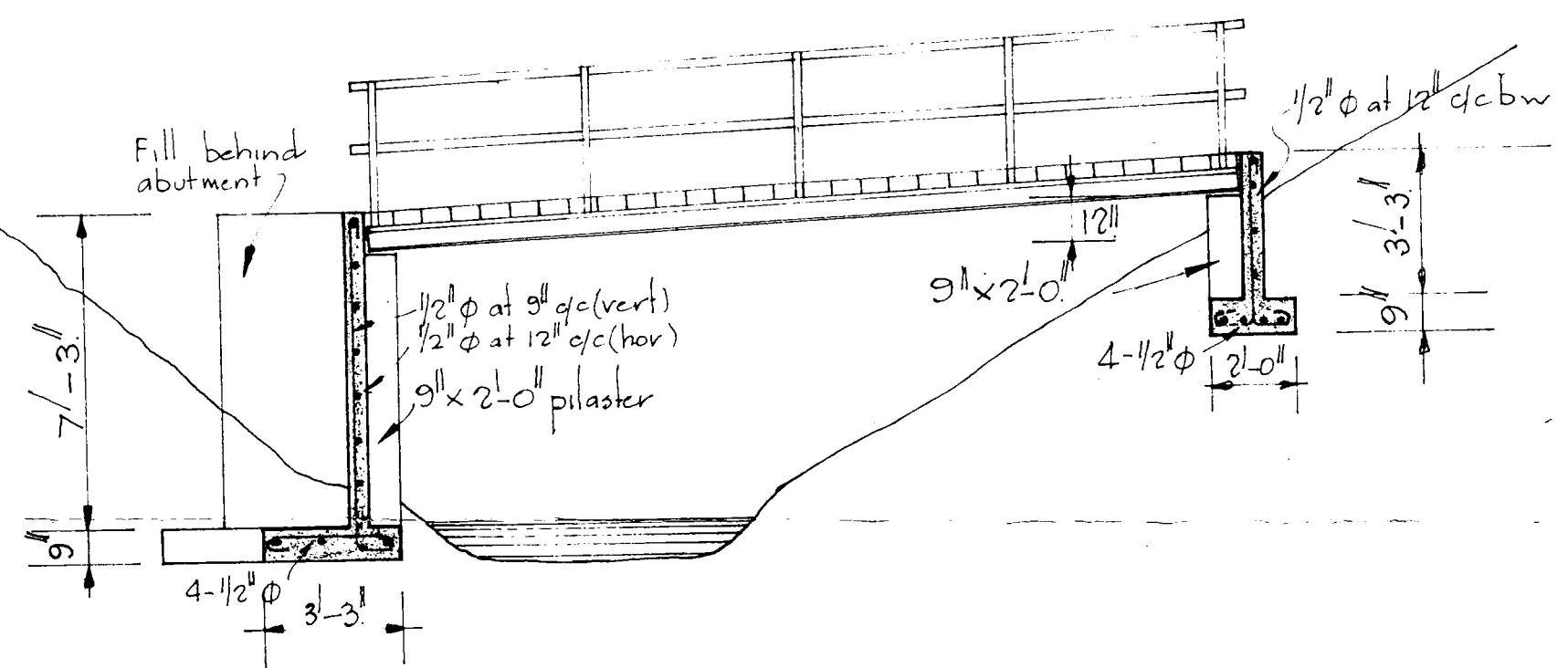
PLAN OF BRIDGE
1/4" = 1'-0"



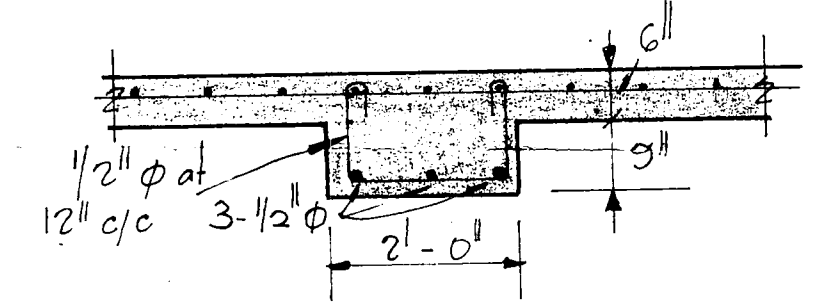
LOCALITY PLAN
40' to 1"



CROSS SECTION
3/4" = 1'-0"



ELEVATION
1/4" = 1'-0"



REINFORCEMENT TO PILASTERS
1/2" = 1'-0"

ACCESS OVER SOUTH KARORI STREAM TO 86 STH. KARORI RD. FOR MR. MOODY.

DETAILS OF BRIDGE.

DRAWING No. J 530 / 1	DATE Nov 1961.
CHECKED <i>W. a. DeTerte</i>	SCALES as shown.

BOND & PARTNERS
CONSULTING CIVIL & MECHANICAL ENGINEERS
20 FITZHERBERT TERRACE, WELLINGTON, N.Z.