

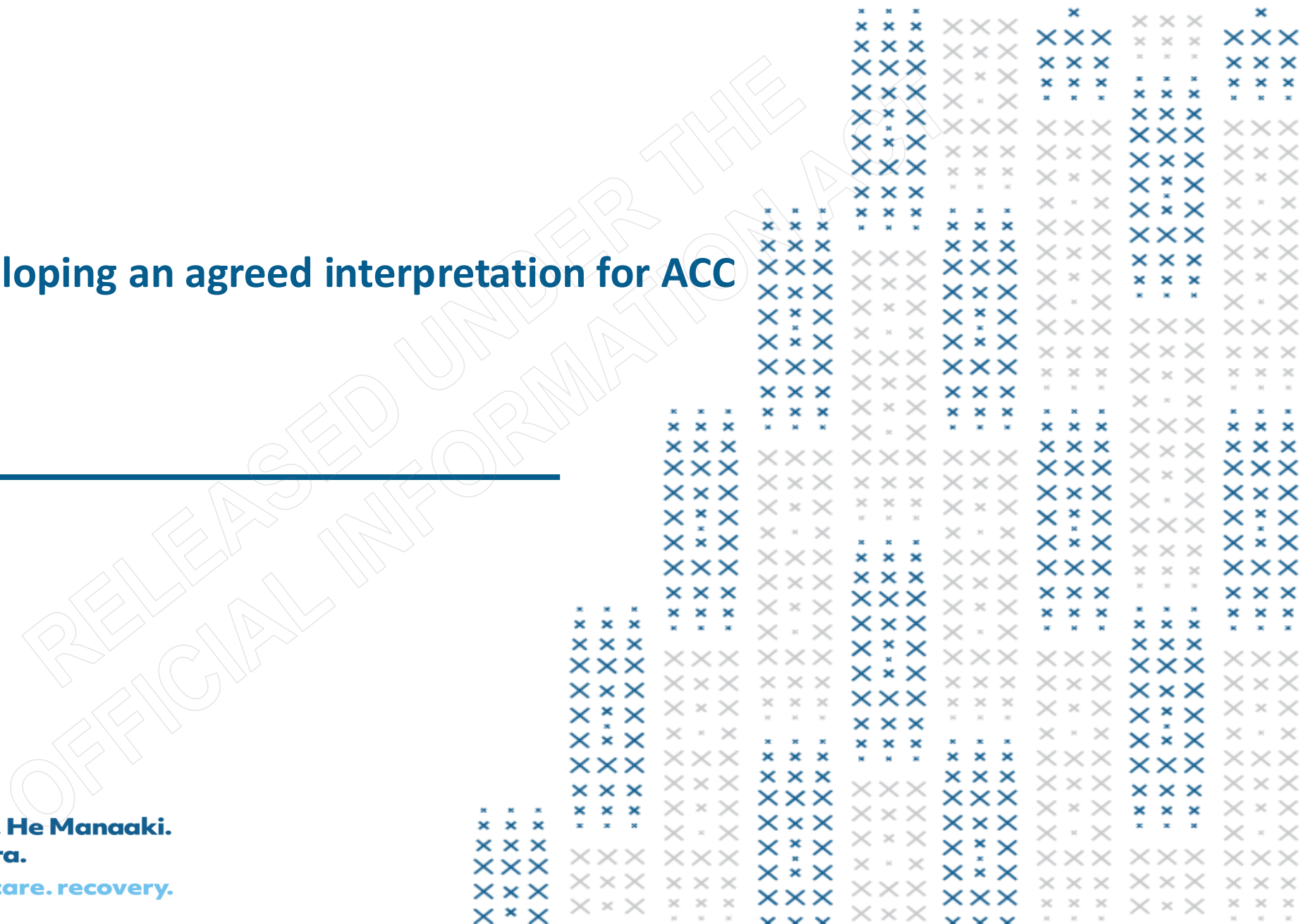
Waka Hourua – Developing an agreed interpretation for ACC

DCE Māori Office

DATE: 24 April 2024



**He Kaupare. He Manaaki.
He Whakaora.**
prevention. care. recovery.

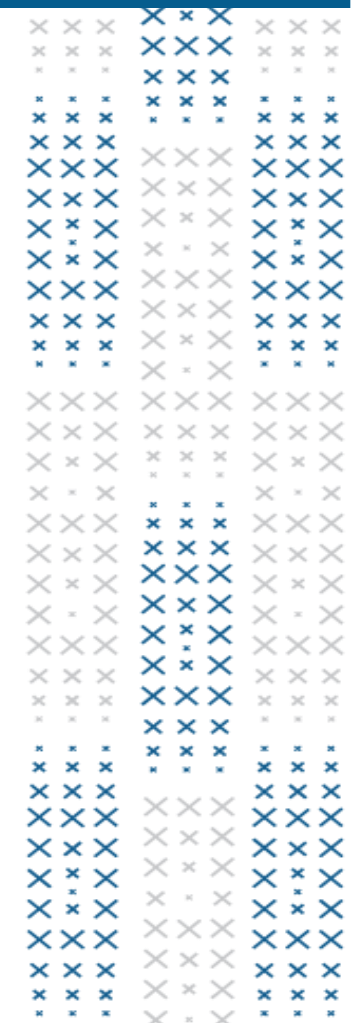


Mātanga whakaterere waka – Expert waka exponent

- The knowledge utilised for this advice has come from [s 9(2)(a)]
- [s 9(2)(a)]
- There is no one more qualified to provide advice on matters such as this.

[s 9(2)(a)]

RELEASED UNDER THE OFFICIAL INFORMATION ACT



Key points of reference from [s 9(2)(a)] :



A double hulled waka as a framework, is still inequitable for Māori. The Tangata Tiriti side of the waka has most resource, therefore forcing the waka to naturally move toward Tangata Tiriti goals and missing Tangata Whenua goals.

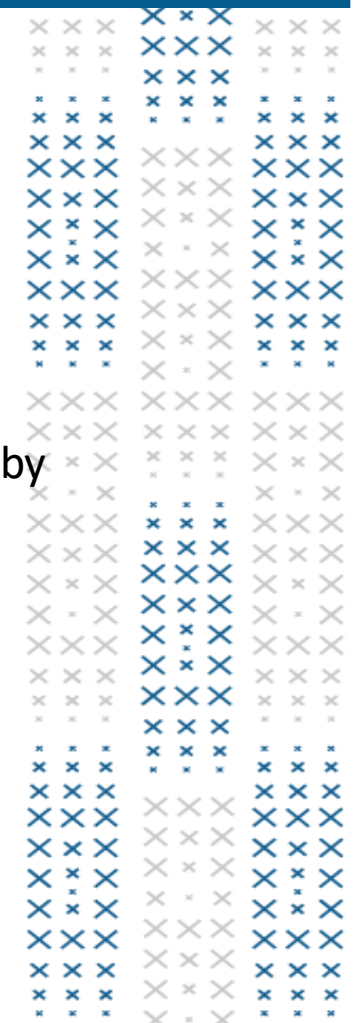


People do not sit on respective hulls; they work together equitably to ensure the waka and crew are safe. This framework is about working together to achieve **BOTH sets of goals** set by both Tangata Tiriti and Tangata whenua.



Mana Taurite is a requirement as a starting point to ensure the waka is balanced.

RELEASED UNDER THE OFFICIAL INFORMATION ACT



Waka Hourua is how we bring Te Tiriti to life through Partnership

GOV-033144

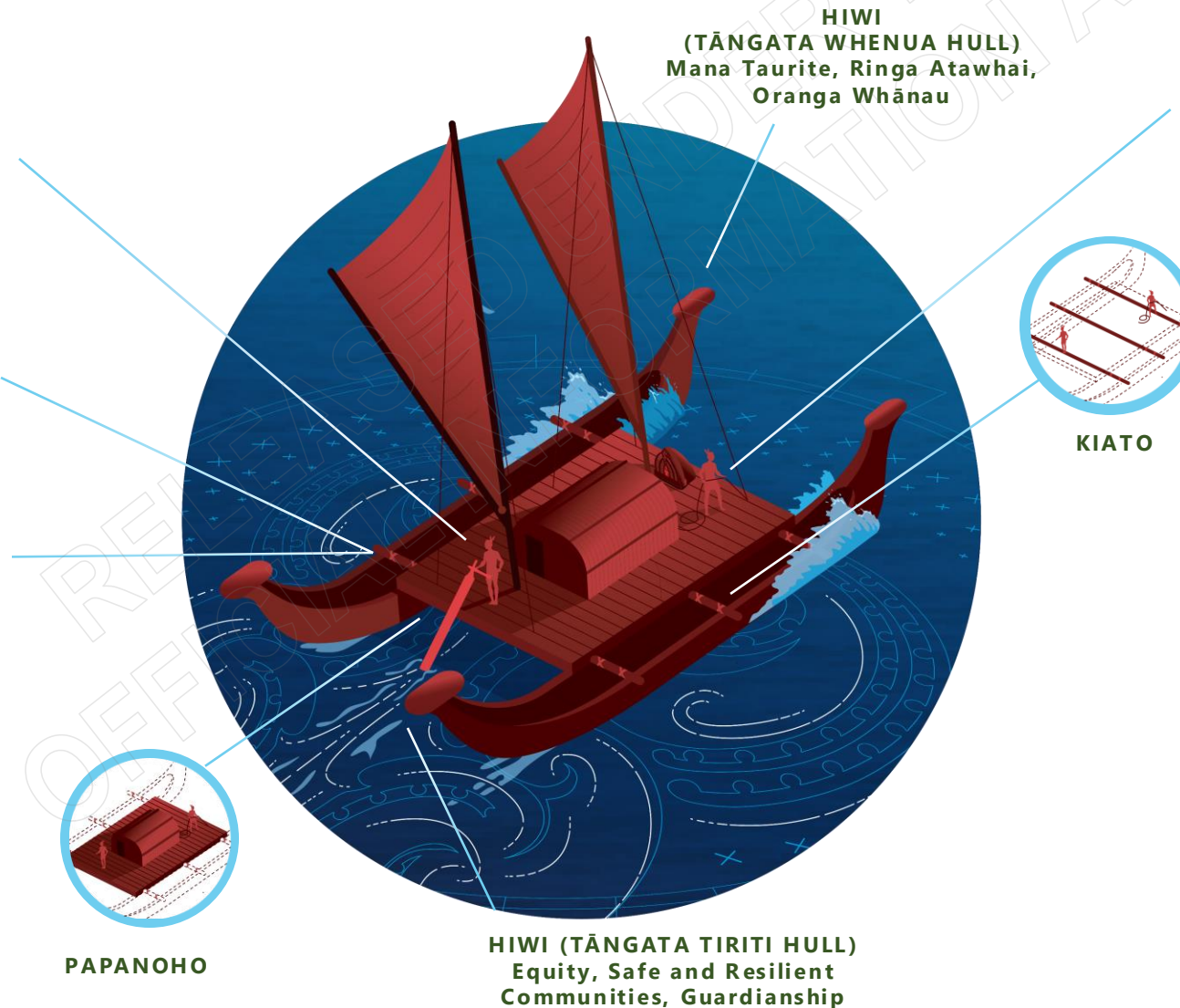
Te waka hourua (double-hulled sailing vessel) represents a partnered approach between tangata whenua (indigenous people of Aotearoa, New Zealand) and tangata Tiriti (people in Aotearoa, New Zealand by right of Te Tiriti o Waitangi/The Treaty of Waitangi).

Te Kaiwhakaterere (navigator) is the Chief Executive. The role of the navigator is to capture the directive of the captain and understand what that looks like to inform the rest of the crew.

Ngā Rauawa (riggings) represent the Deputy Chief Executives. These riggings hold everything together. When the lashings are tight, and the kiato are strong the hiwi are secure.

Ngā Aukaha (the lashings) represent the Principal Advisor network. The lashings help keep the rigging strong and secure.

Ngā Kaimahi (Human Resource) that are spread evenly amongst the two hiwi. The papanoho is the space for collaboration and agreement to mutual outcomes. This reinforces the understanding that every person on the waka has a shared responsibility to keep the waka and crew safe.



Te Kaihautu (Captain) represents the board Chair.

Ngā Kiato represent the ACC board (cross pieces that secure the crossbeams) that secure the waka. Along with the kaihautu, these are the strategic and foundational thinkers.

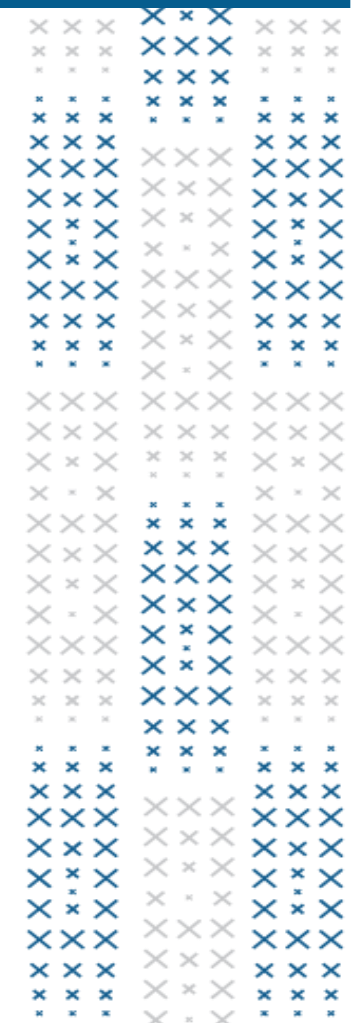
Kaitiaki (watch captains) represent Team leaders. They are responsible for keeping the crew and hulls in good shape. They must know how to implement navigator and captain instructions.

Islands represent enterprise waypoints. These are the indicators that inform us that we are heading in the right direction toward Mana Taurite and Equity, Ringa Atawhai and Guardianship, Oranga Whānau and Safe and Resilient communities. They will help keep us focused on Tōnui ake nei.

Next Steps

- Based on the Boards feedback we will aim to begin understanding what an operating model to this effect may look like.
- We aim to update the Board in Q4.

RELEASED UNDER THE OFFICIAL INFORMATION ACT



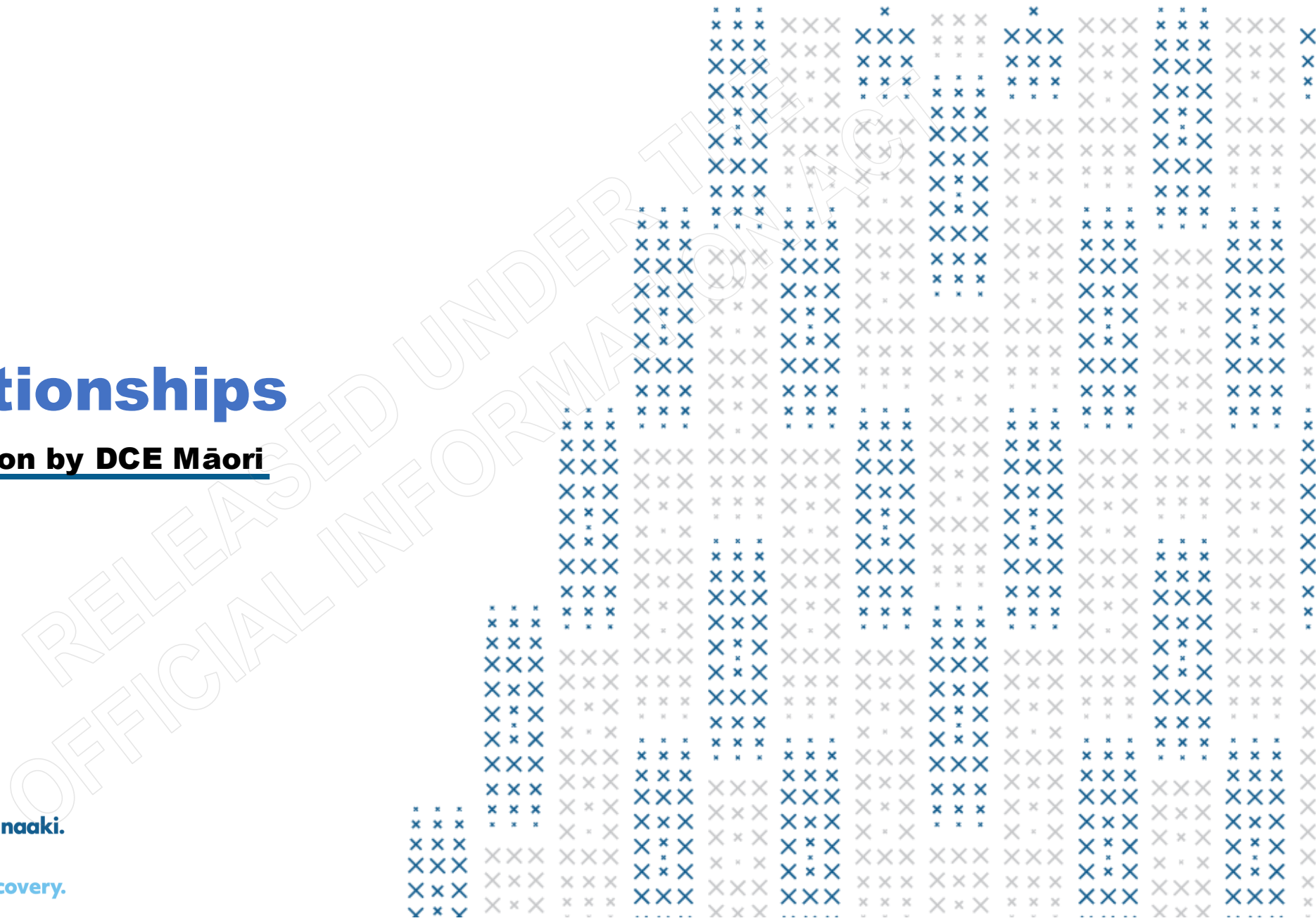
Māori Relationships

ACC Board Presentation by DCE Māori

DATE: 24 April 2024



He Kaupare. He Manaaki.
He Whakaora.
prevention. care. recovery.



Kaupapa o te rā | Agenda

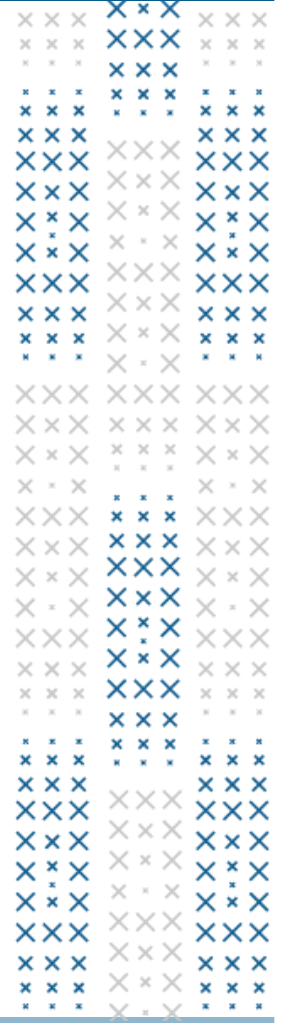
Four key areas

Māori Engagement Framework

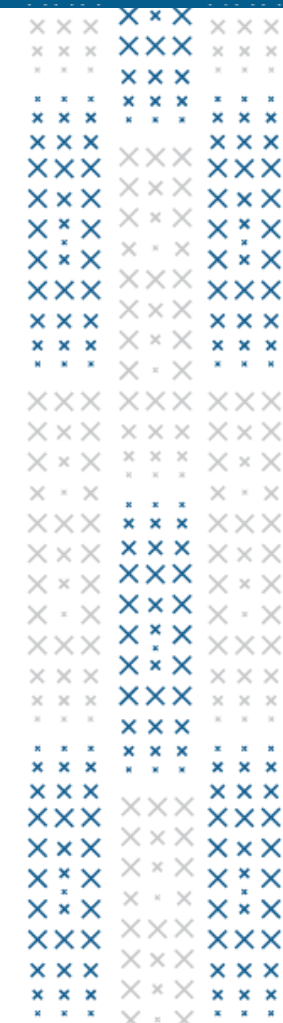
Māori Landscape

Regional Directors Programme – Ki Tua overview

Summary

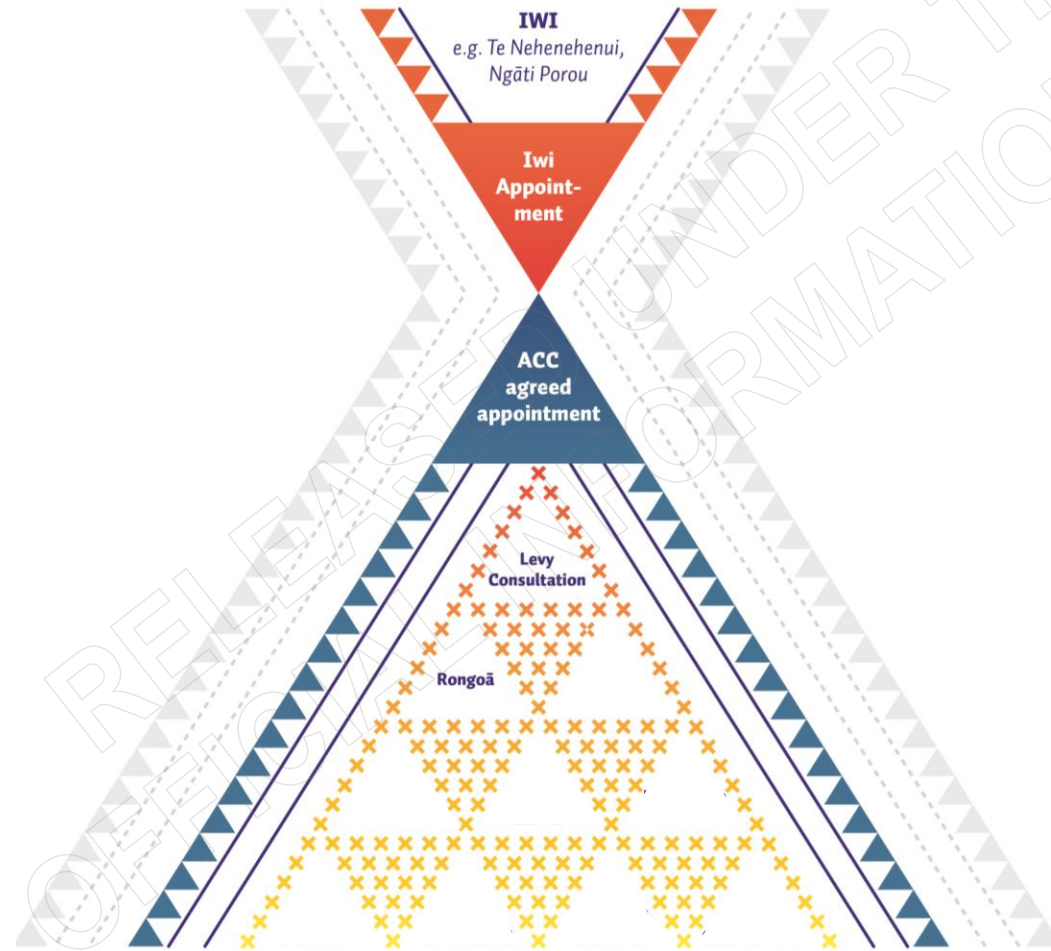


Niho Taniwha



Niho Taniwha represents strength, stability, whakapapa, and history.

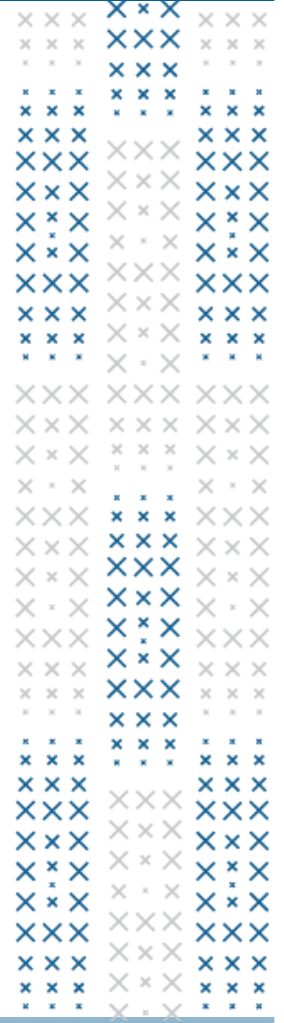
Māori Engagement Framework



Māori Landscape

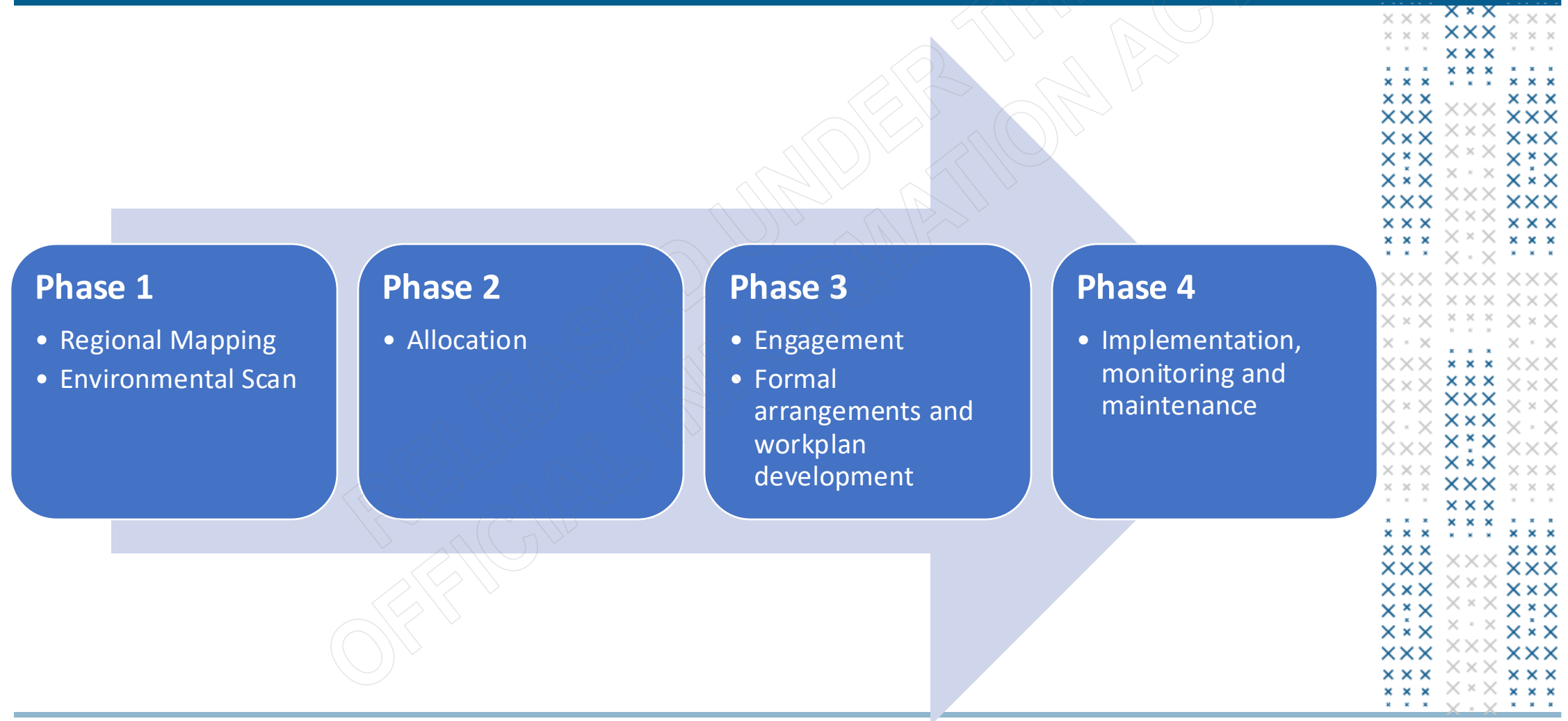
Who do we partner with?

- Post Settlement Governance and Pre-Settlement Governance Entities
- General Māori Entities
- Māori commercial businesses
- Trusts *Ahu Whenua, Whenua Tōpu, Kaitiaki, Whānau and Pūtea Trusts*
- Marae and Hapū
- **A combination of the above**



RELEASED UNDER THE OFFICIAL INFORMATION ACT

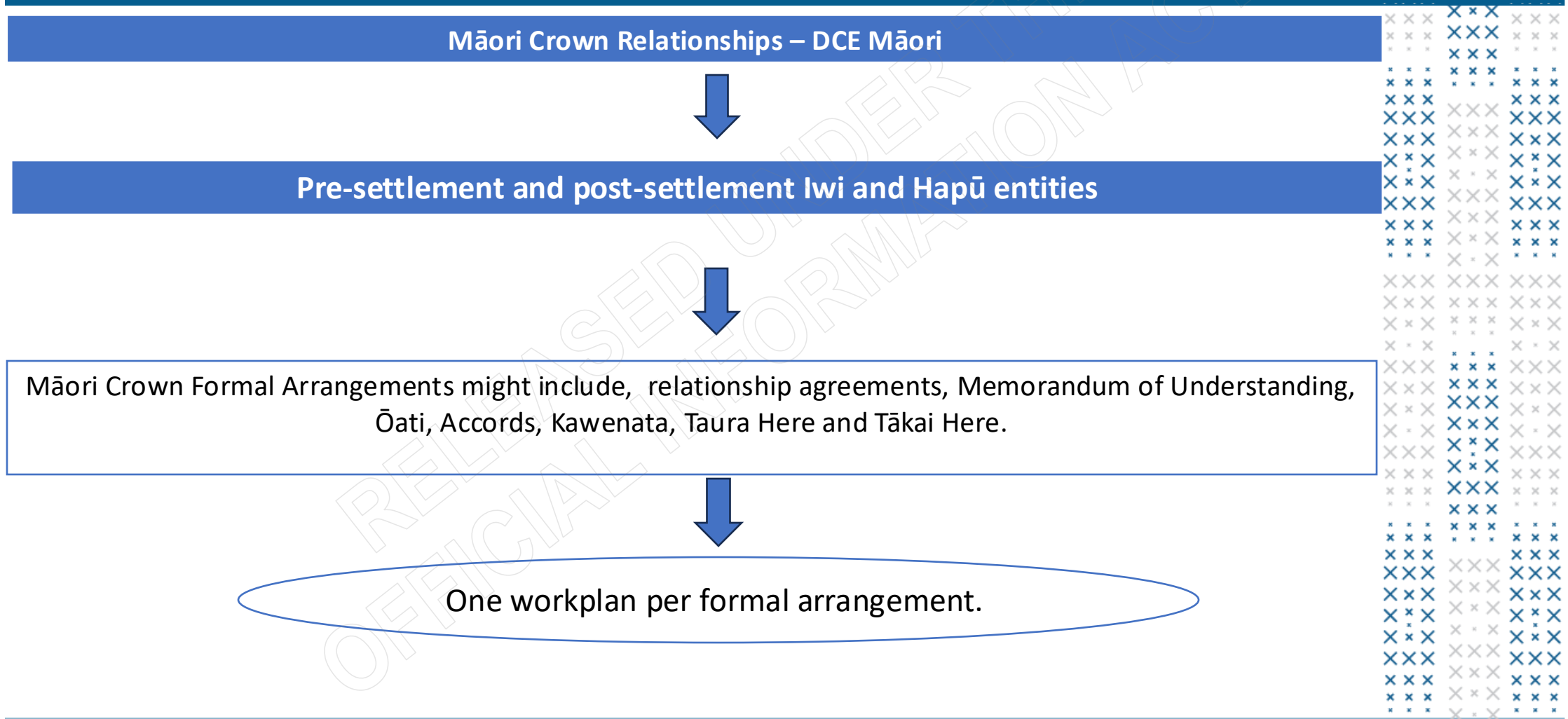
Regional directors programme *Ki Tua* - Overview



Phase 2: Allocations

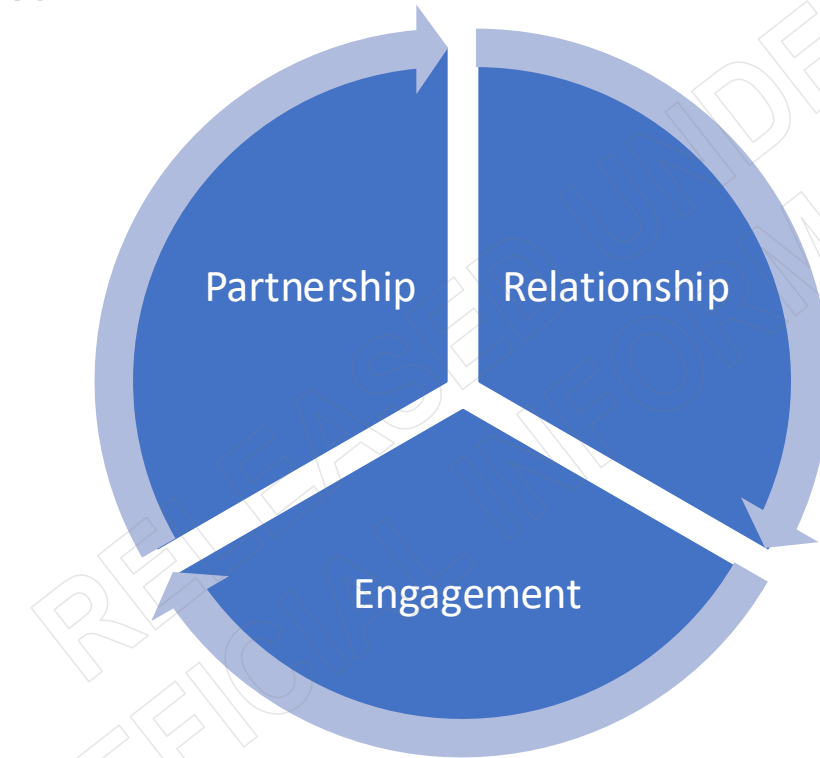
Iwi-Māori partnership board	Area covered by board	SEP
1. Te Taumata Hauora o Te Kahu o Taonui	Tai Tokerau–Tāmaki	RR
2. Ngaa Pou Hauora oo Taamaki Makaurau	South Auckland	TN
3. Te Tiratū	Waikato-Tainui	TN
4. Te Moana a Toi	Mataatua	HS
5. Tairāwhiti Toitū Te Ora	Tairāwhiti	FY26
6. Te Taura Ora o Waiariki	Te Arawa	HS
7. Tūwharetoa	Tūwharetoa	HS
8. Te Punanga Ora	Taranaki	KK
9. Te Mātuku	Whanganui	KK
10. Tihei Tākitimu	Tākitimu Hawke’s Bay	FY26
11. Te Pae Oranga o Ruahine o Tararua	Manawatū	FY26
12. Te Karu o te Ika Poari Hauora	Wairarapa	FY26
13. Ātiawa Toa	Te Upoko o te Ika Greater Wellington/Hutt	KK
14. Te Kāhui Hauora o Te Tau Ihu	Nelson-Marlborough	KK
15. Te Tauraki	Ngāi Tahu	FY26

Phase 3: Engagement, agreements and workplans



Phase 4: Implementation cycle

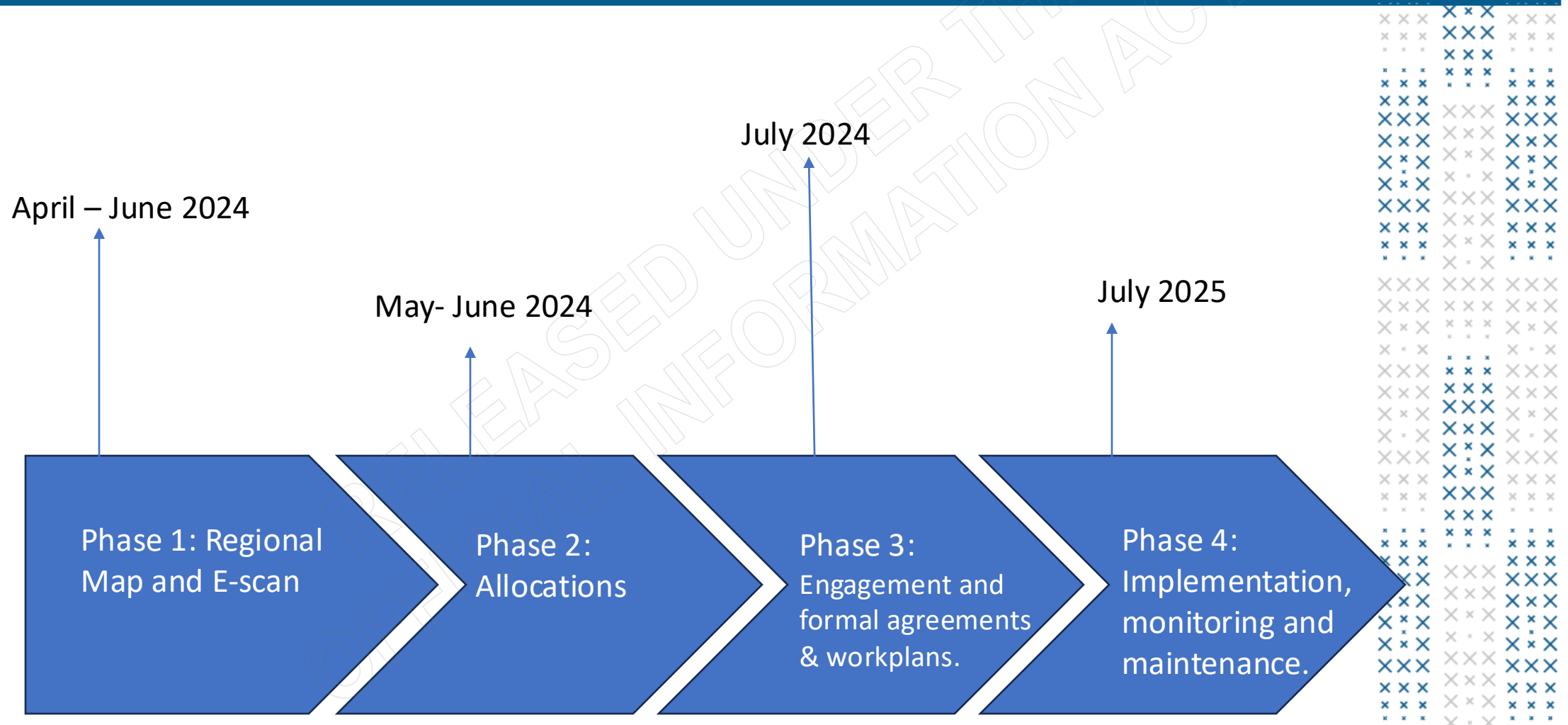
Checks and balances



Implementation, monitoring and maintenance.



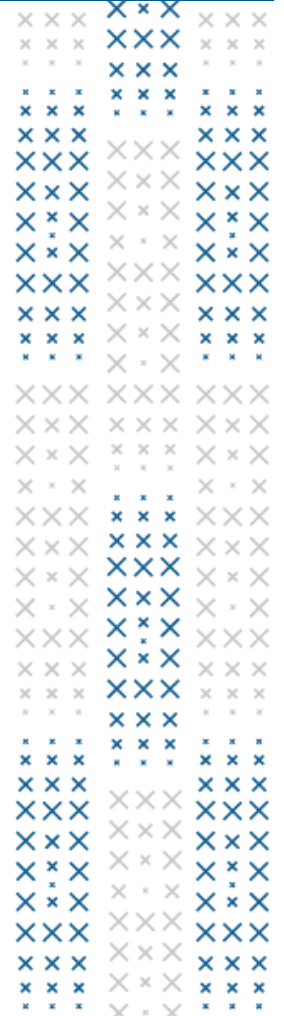
Proposed Regional Approach



Formal Arrangements

What we have and what's in progress with post and pre-settled iwi and hapū.

- **Waikato-Tainui (Waikato)**
 - 2014, signed by Chairperson and CEO of ACC and Iwi leaders.
 - Sponsored major Iwi events such as annual regatta and the biennial Tainui games.
 - Funded Water Safety New Zealand to fund Rukumoana (diving course) project.
 - Amohia Ake
- **Te Nehenehenui Trust (Waikato and South Waikato)**
 - **Ready for singing**, high level principles-based agreement to guide engagement.
 - To develop a robust workplan over the next six-months (in progress).
- **Te Atiawa/Ngāti Toa (Greater Wellington)**
 - Agreement is in draft for internal legal review.
 - Seeking engagement with CEO, DCE Māori and avail Board members in June onwards.
- **Ngāti Raukawa (South Waikato)**
 - Engagement is consistent with DCE Māori and Iwi CEO office.
 - Working on a timeframe to develop their relationship agreement.



Summary

On the Journey

- Operationalising the alignment of the proposed Māori Engagement Framework and Ki Tua with Huakina Te Rā, and the proposed Waka Hourua approach will enable ACC to apply a one-ACC approach to engaging with Māori.
- Engagement in the Māori-Crown space and securing our partnership opportunities at this level will enable us to deliver on Mana Taurite, Ringa Atawhai and Oranga Whānau.
- We will progress the proposed approach based on the Board’s feedback, and return to the Board in June 2024 for approval.



Questions

RELEASED UNDER THE
OFFICIAL INFORMATION ACT

