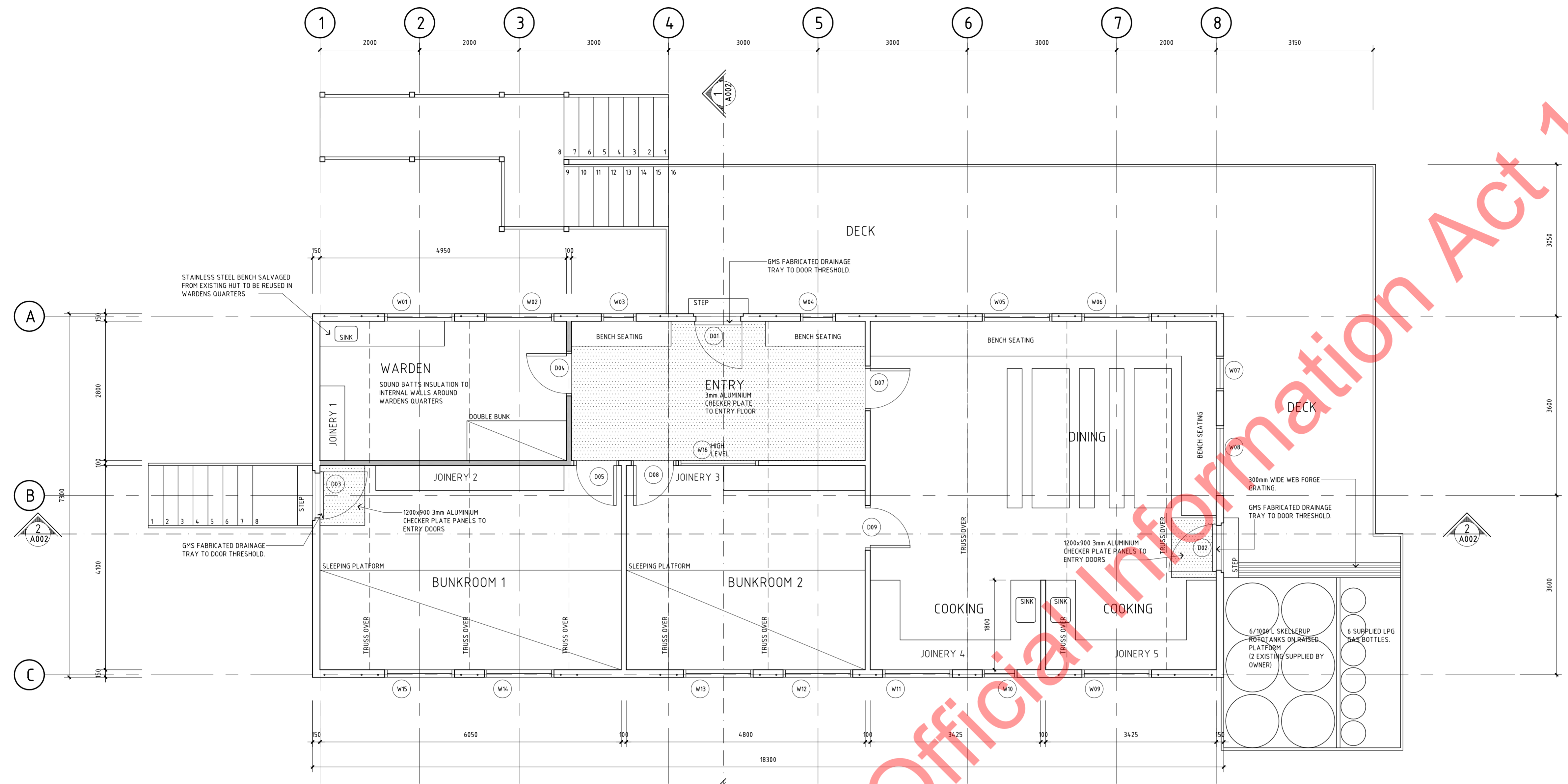
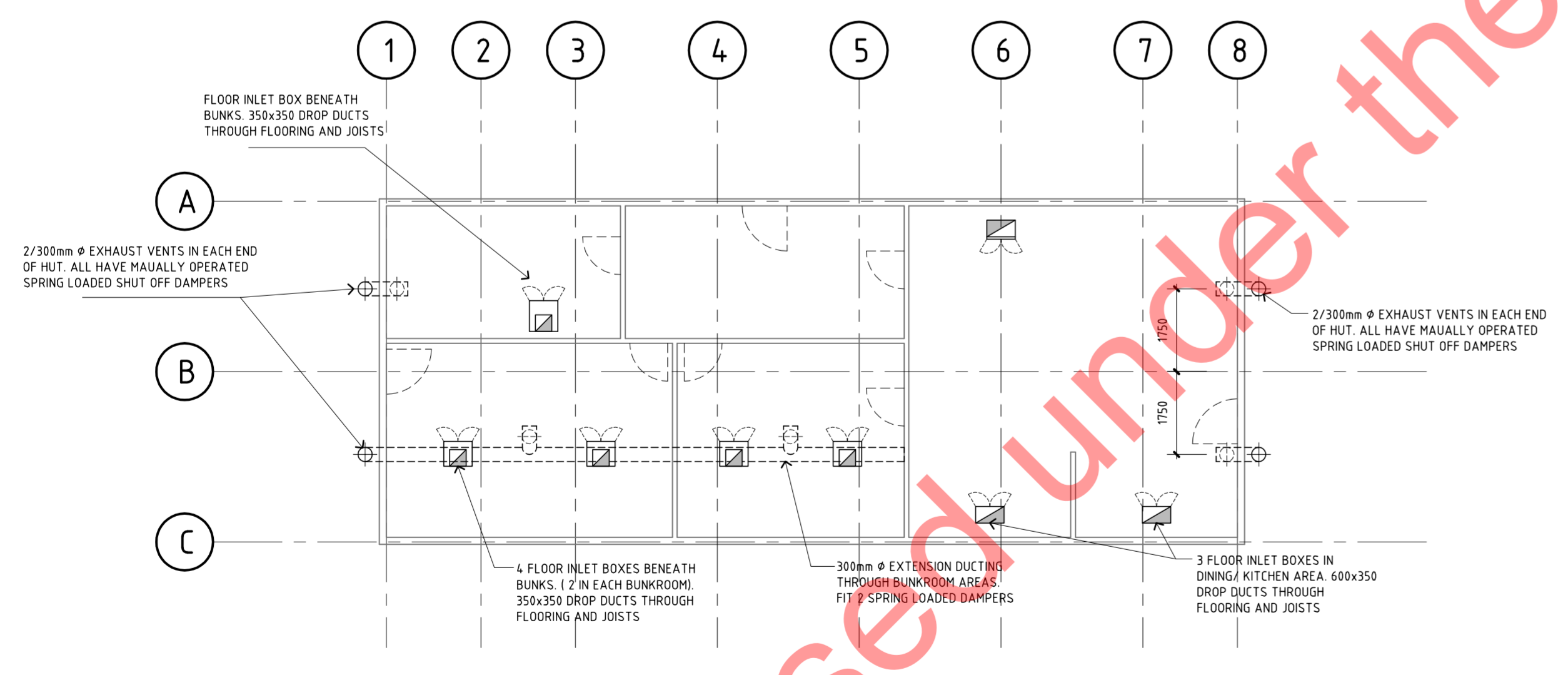


ORIGINAL SIZE A0



1 PROPOSED FLOOR PLAN
1:50

NOTE
ALL INTERNAL DOORS TO SOLID CORE
TIMBER DOORS IN EX 44mm ARCHFRAMES
WITH 30x20 PLANTED STOPS

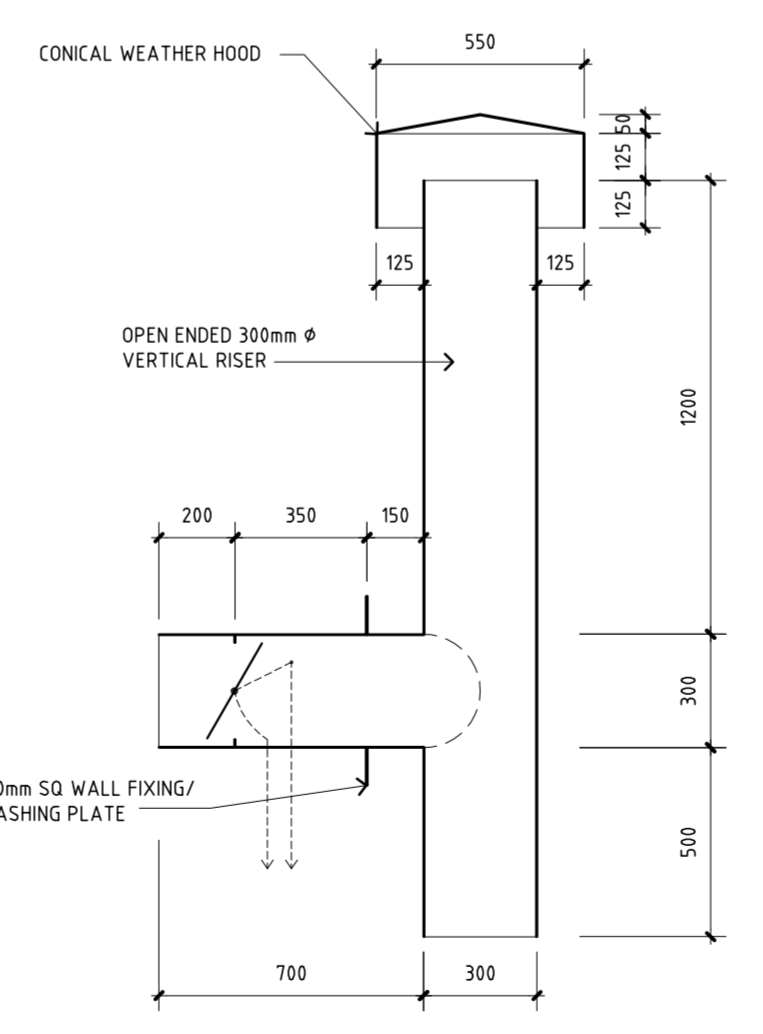


2 PROPOSED VENTILATION PLAN
1:100

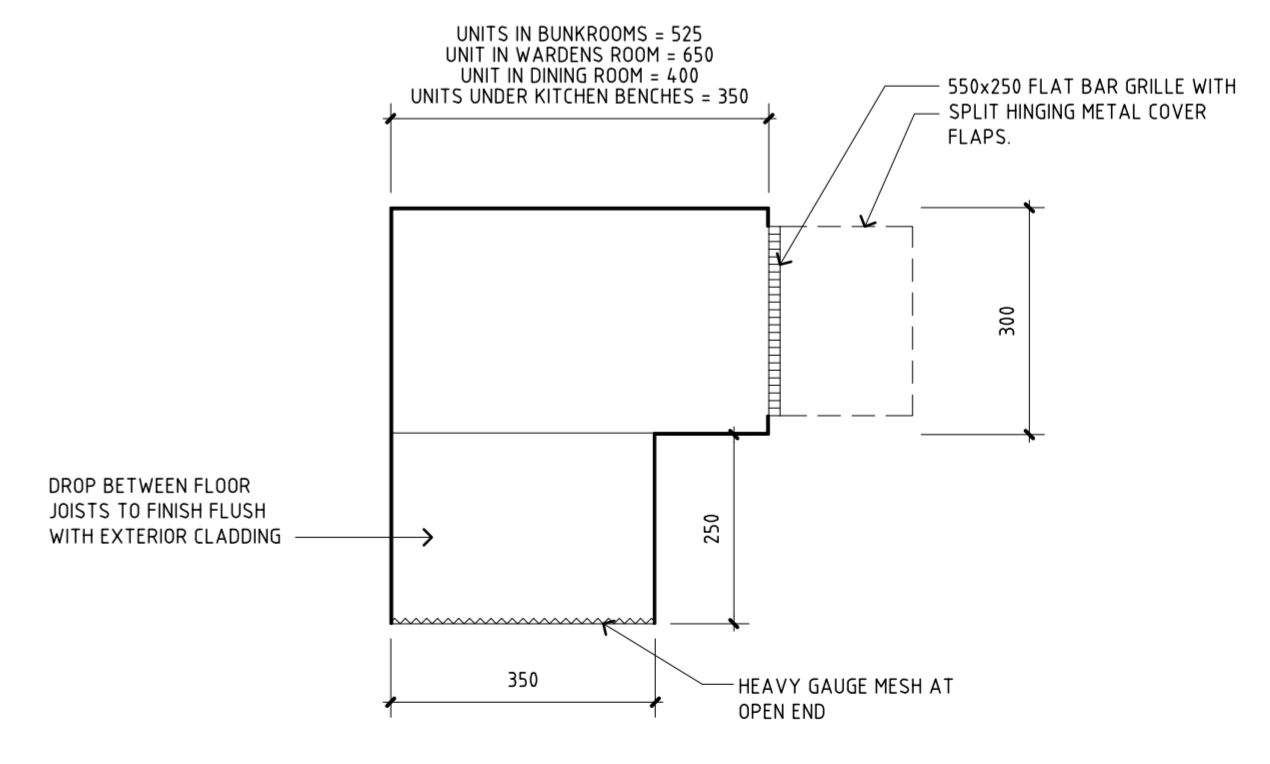
NOTE
FLOOR BOXES AND EXHAUST VENTS SUPPLIED
EX FACTORY. GRATES FOR GRILLE SHUTTERS,
DROP CHAINS AND WALL HOOKS FOR SPRING
LOADED DAMPERS ALL SUPPLIED BY MAIN
CONTRACTOR.
DUCTING SUPPORTS AND INSTALLATION BY
MAIN CONTRACTOR

ALL ITEMS EX FACTORY.
GALVANISED IRON CONSTRUCTION.
SPOT PRIMED WHERE NECESSARY BUT
GENERALLY IN UNPAINTED CONDITION.

APPROXIMATE WEIGHTS
4 WALL MOUNTED COWL UNITS AT 60kg EACH.
10 EXTENSION DUCT UNITS AT 13kg EACH.
8 FLOOR INLET BOXES AT 40kg EACH.



3 WALL OUTLET COWLS
1:20



4 FLOOR BOXES
1:10

REV	AMENDMENTS	DATE	INITIAL

Name	Date
SURVEYED	
DESIGNED	WTA DEC
DRAWN	PT FEB 2003
CHECKED	
APPROVED	

COPYRIGHT © Warburton Team Architecture Ltd. and Montgomery Watson New Zealand Ltd.

WARBURTON
TEAM ARCHITECTURE

Warburton Team Architecture Ltd
184 High Street, Dunedin
PO Box 1426, Dunedin
Telephone 03 474 1825,
Facsimile 03 478 2311
Email warbarch@xttra.co.nz

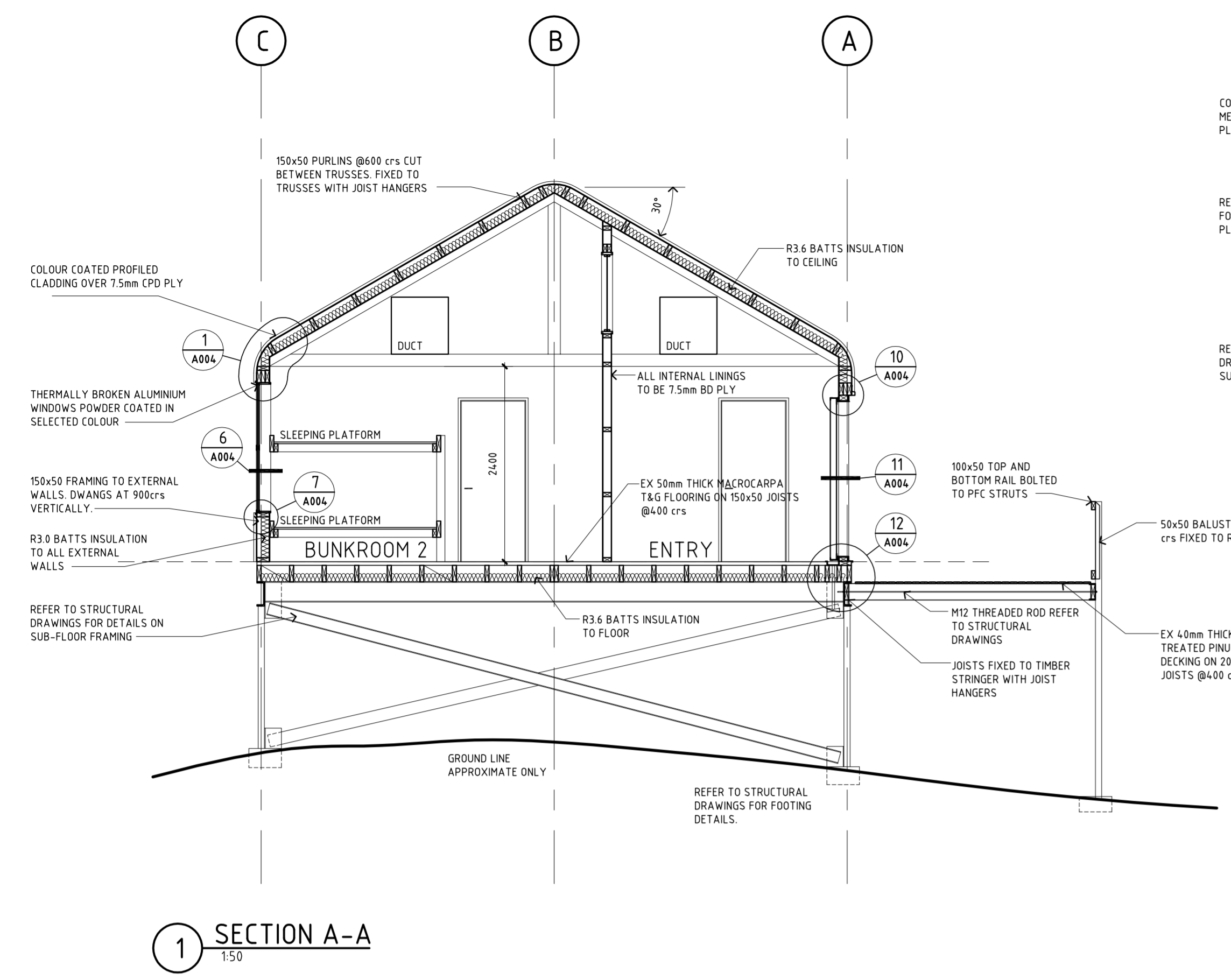
MWH
MONTGOMERY WATSON HARZA

MUELLER HUT REPLACEMENT, MT COOK
DEPARTMENT OF CONSERVATION
PROPOSED PLAN

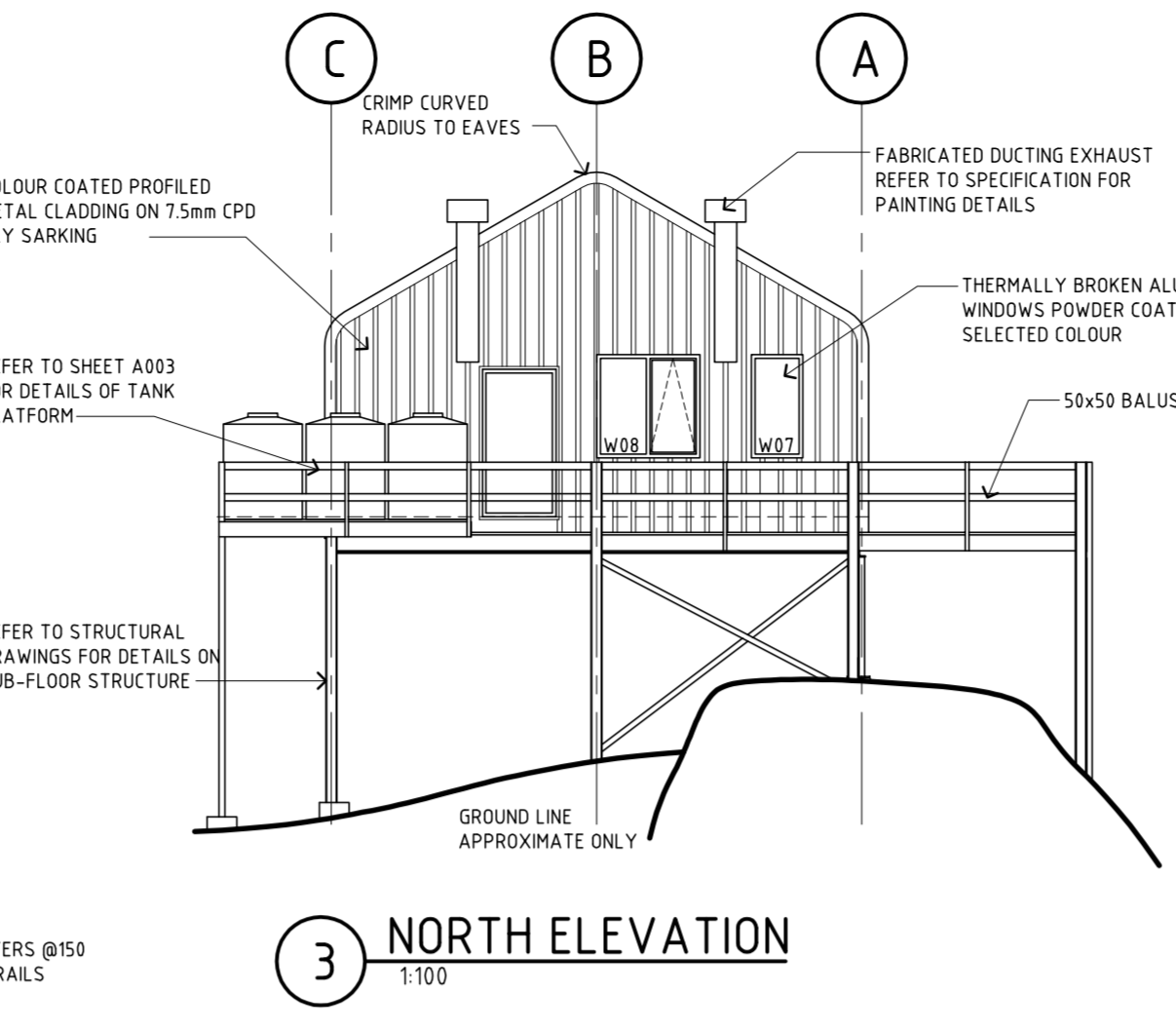
Status Stamp	AS BUILT
Date Stamp	19.09.2003
SCALES	1:100, 1:50, 1:20, 1:10
CAD REF	
Job No.	0133
Sheet No.	A001
Rev.	

ORIGINAL SIZE A0

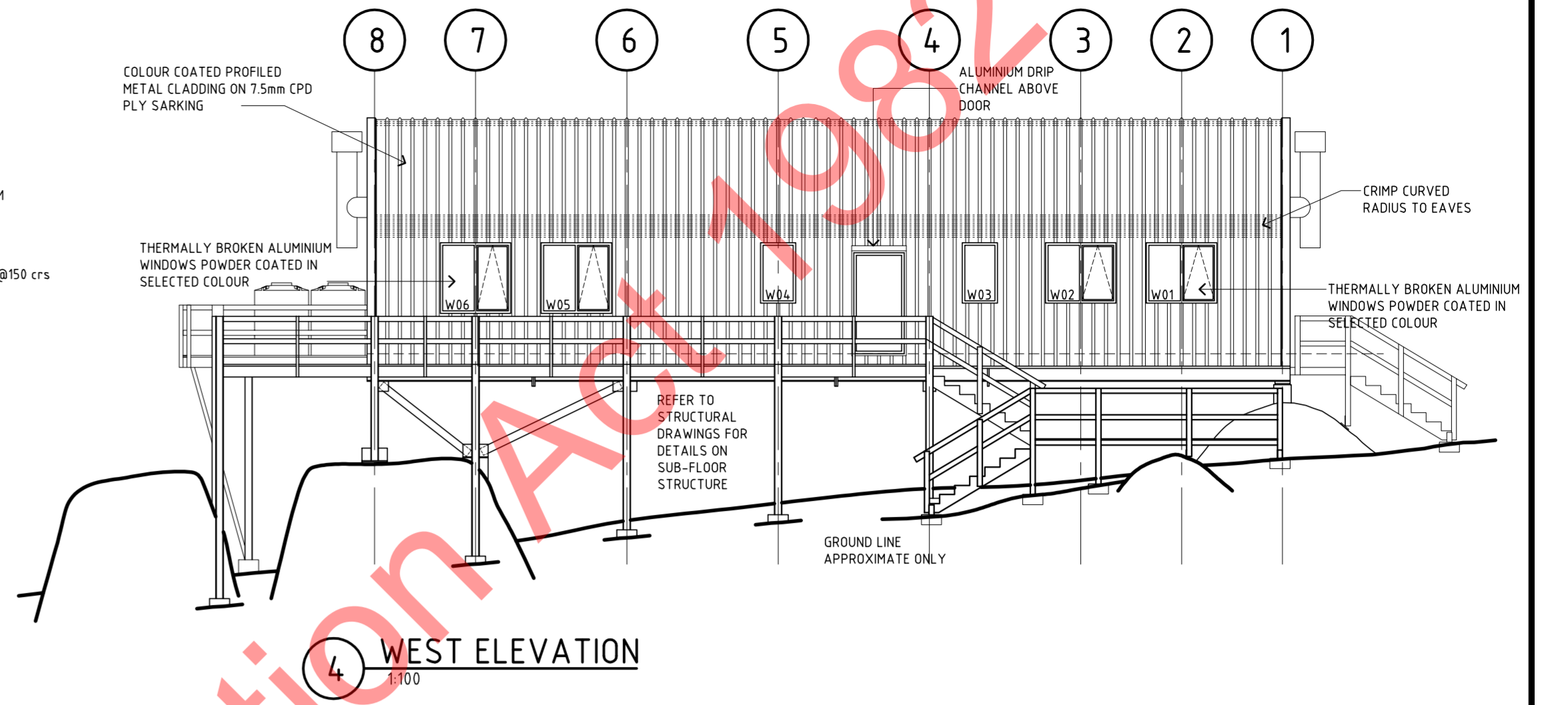
200 DO NOT SCALE - IF IN DOUBT, ASK



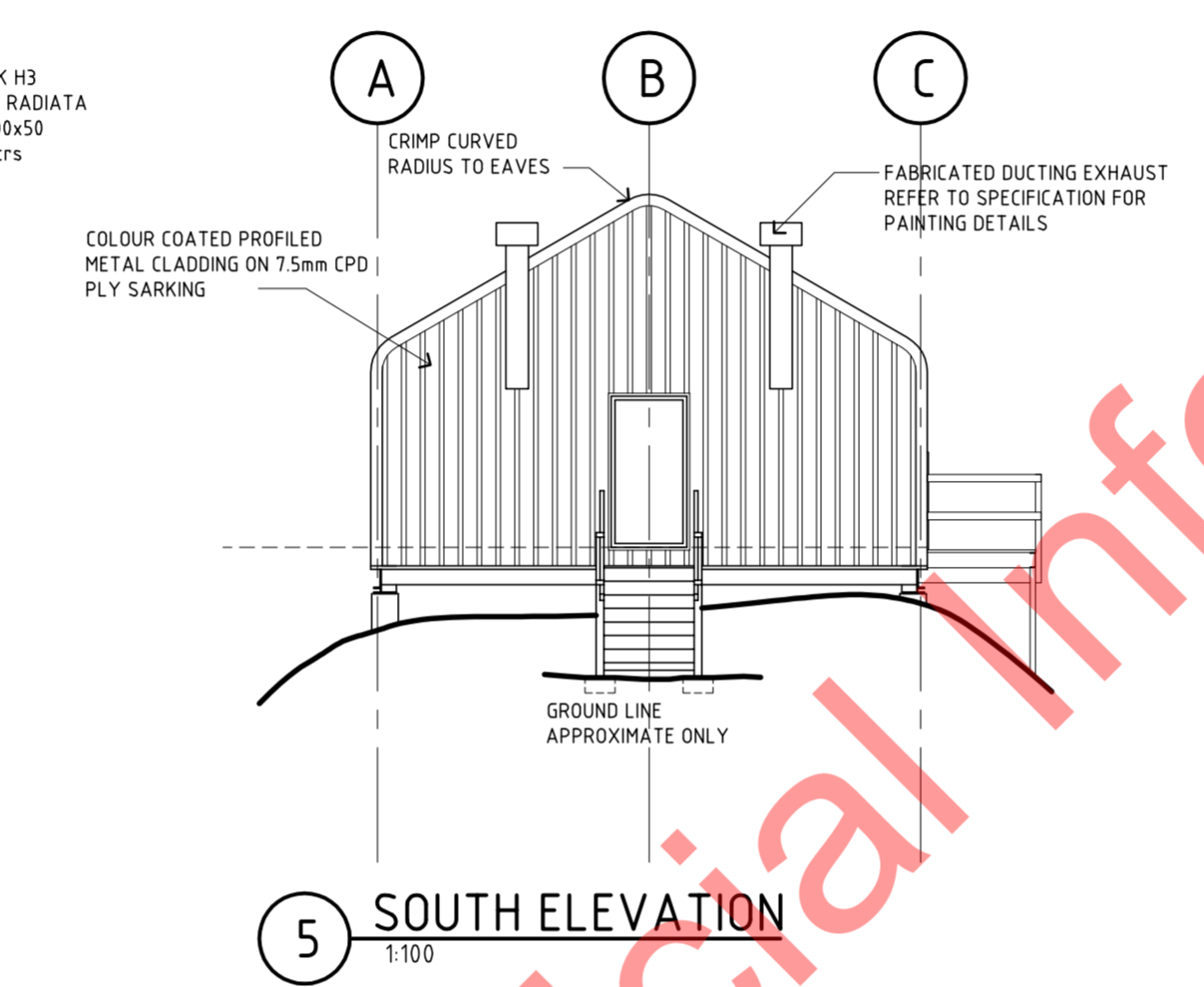
1 SECTION A-A
1:50



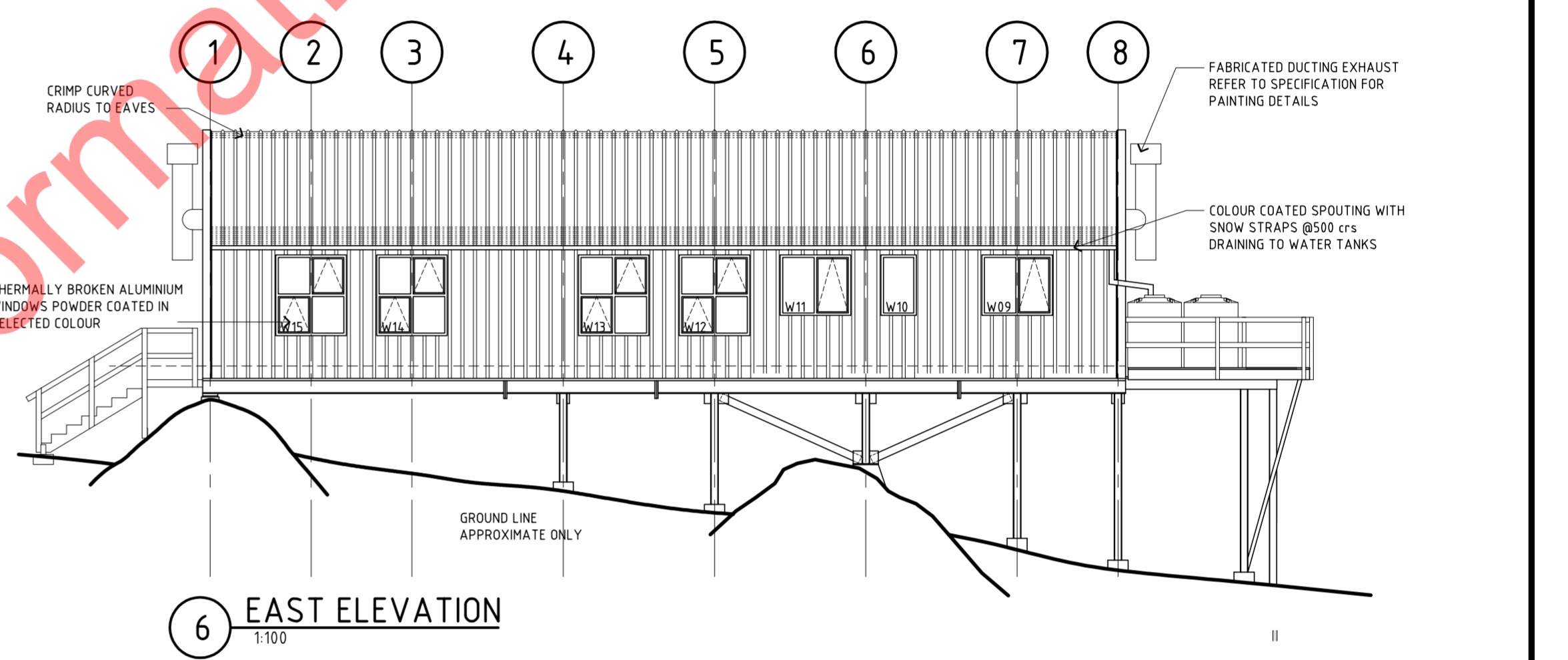
3 NORTH ELEVATION
1:100



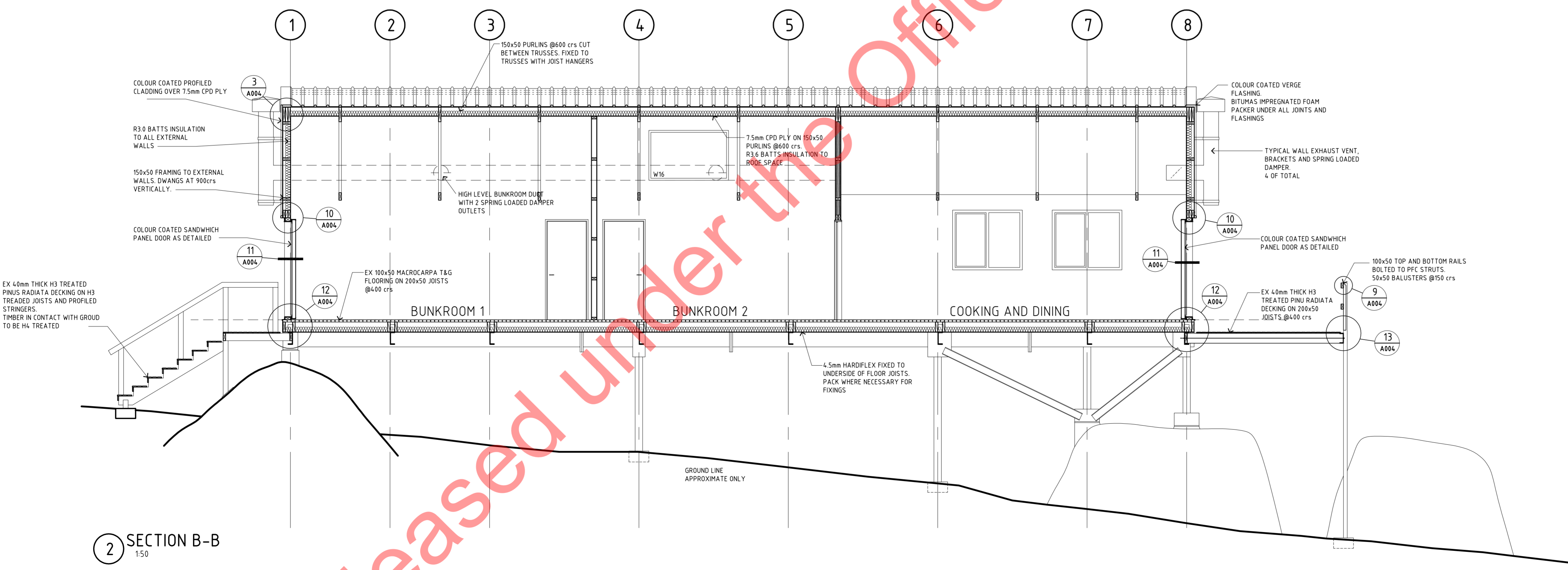
4 WEST ELEVATION
1:100



5 SOUTH ELEVATION
1:100



6 EAST ELEVATION
1:100



2 SECTION B-B
1:50

REV	AMENDMENTS	DATE	INITIAL

COPYRIGHT © Warburton Team Architecture Ltd. and Montgomery Watson New Zealand Ltd.		
XREFS :		
	Name	Date
SURVEYED	WTA	DEC 200
DESIGNED	PT	FEB 200
DRAWN		
CHECKED		
APPROVED		

WARBURTON
TEAM ARCHITECTURE

Warburton Team Architecture Ltd
184 High Street, Dunedin
PO Box 1426, Dunedin
Telephone 03 474 1825,
Facsimile 03 479 2311
Email warbarch@xttra.co.nz

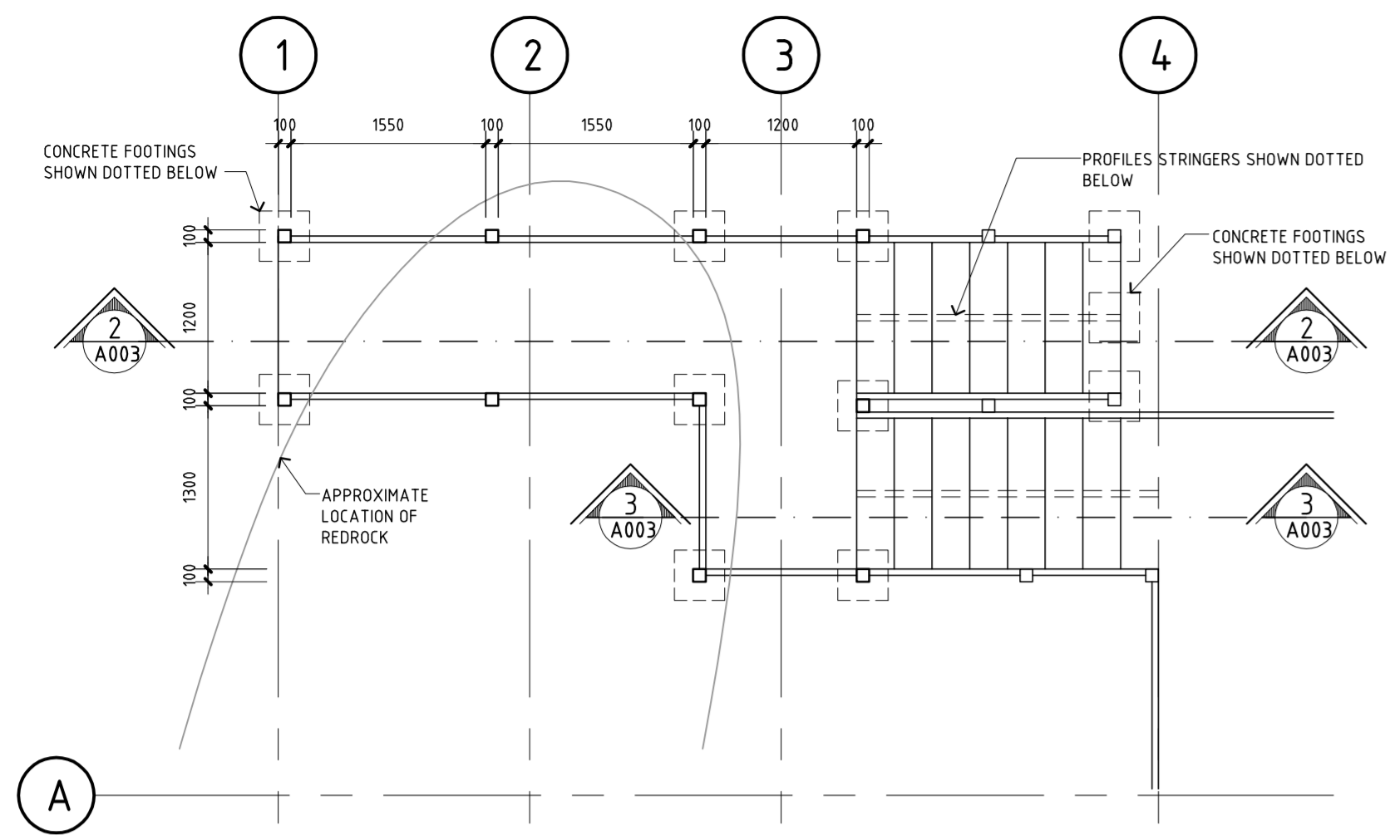
MWH
MONTGOMERY WATSON HARZA

MUELLER HUT REPLACEMENT, MT COOK
DEPARTMENT OF CONSERVATION
SECTIONS/ ELEVATIONS

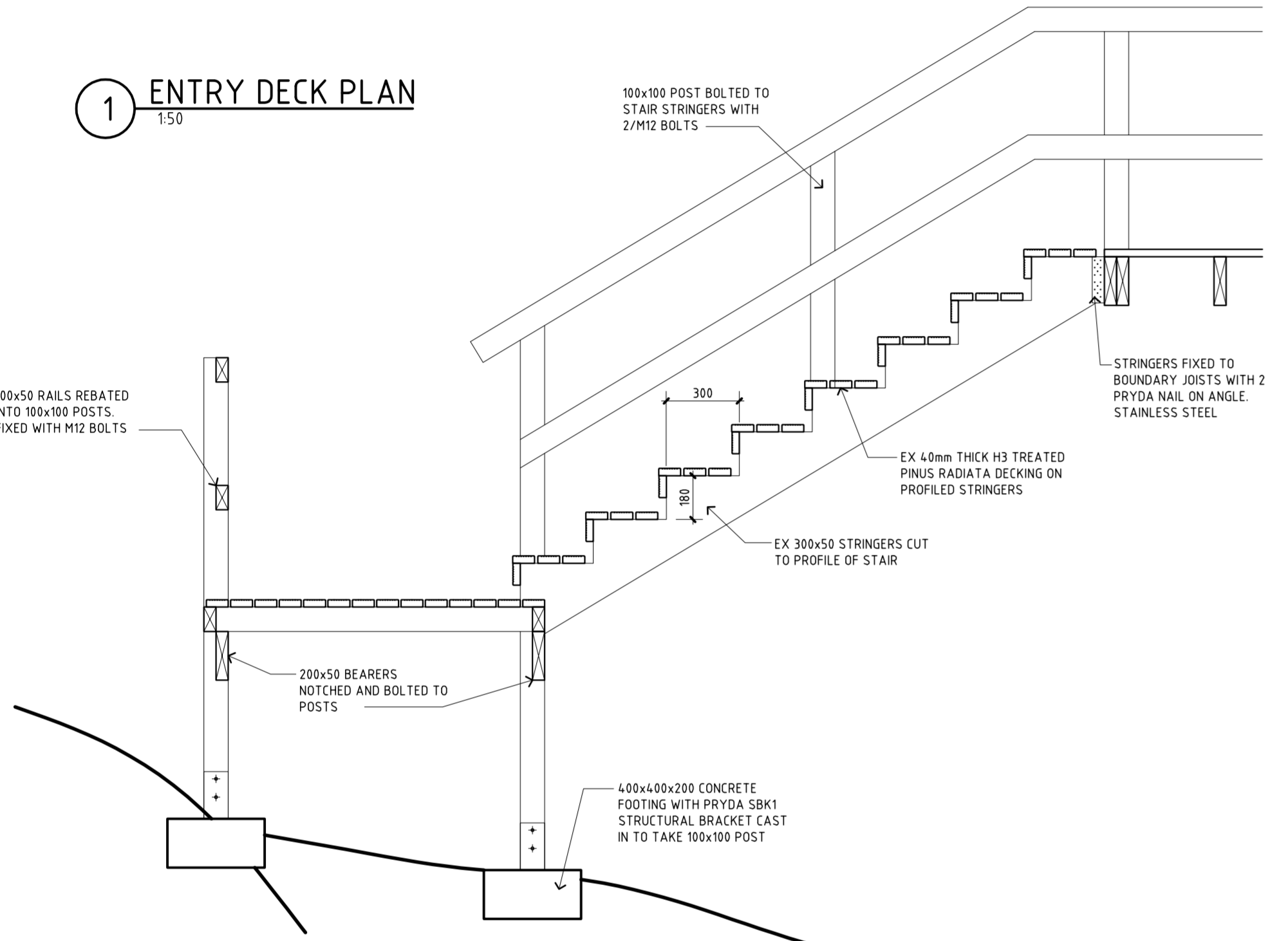
Status Stamp	AS BUILT
Date Stamp	19.09.2003
SCALES	1:50, 1:100
CAD REF :	
Job No.	0133
Sheet No.	A002
Rev.	

ORIGINAL SIZE A0

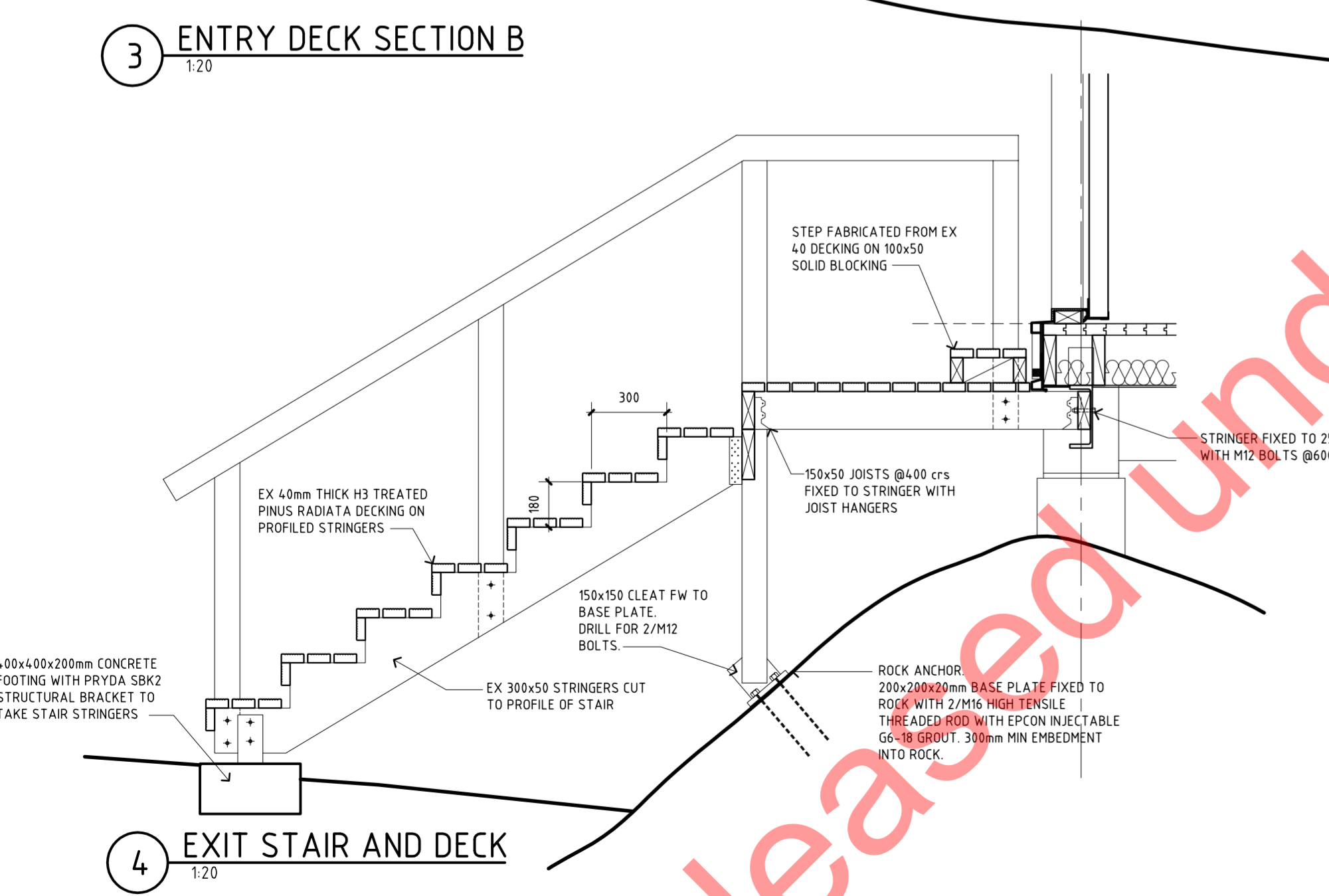
200 DO NOT SCALE - IF IN DOUBT, ASK



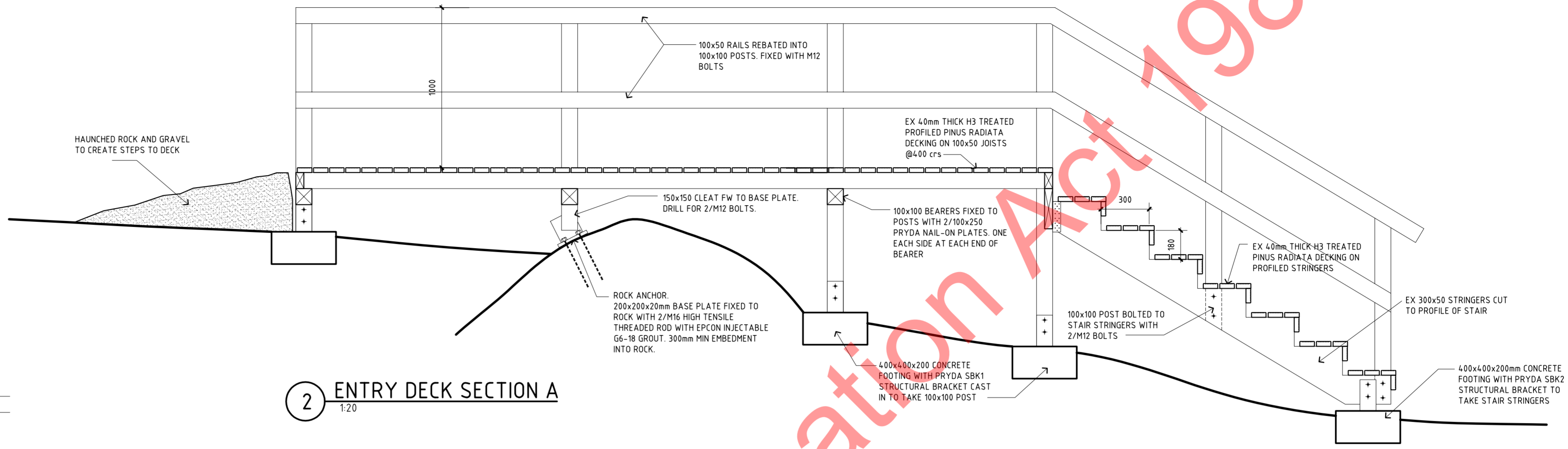
1 ENTRY DECK PLAN
1:50



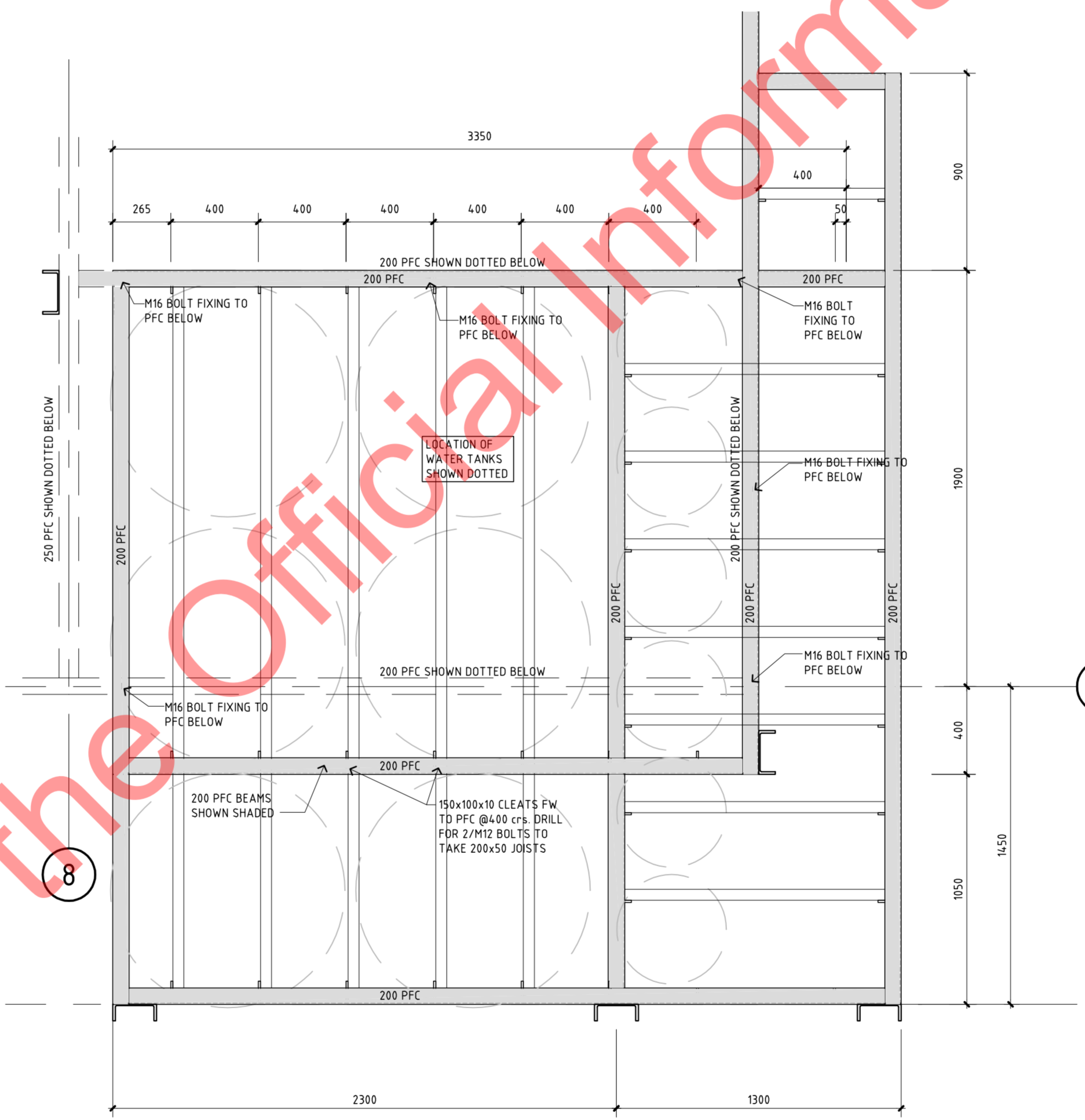
3 ENTRY DECK SECTION B
1:20



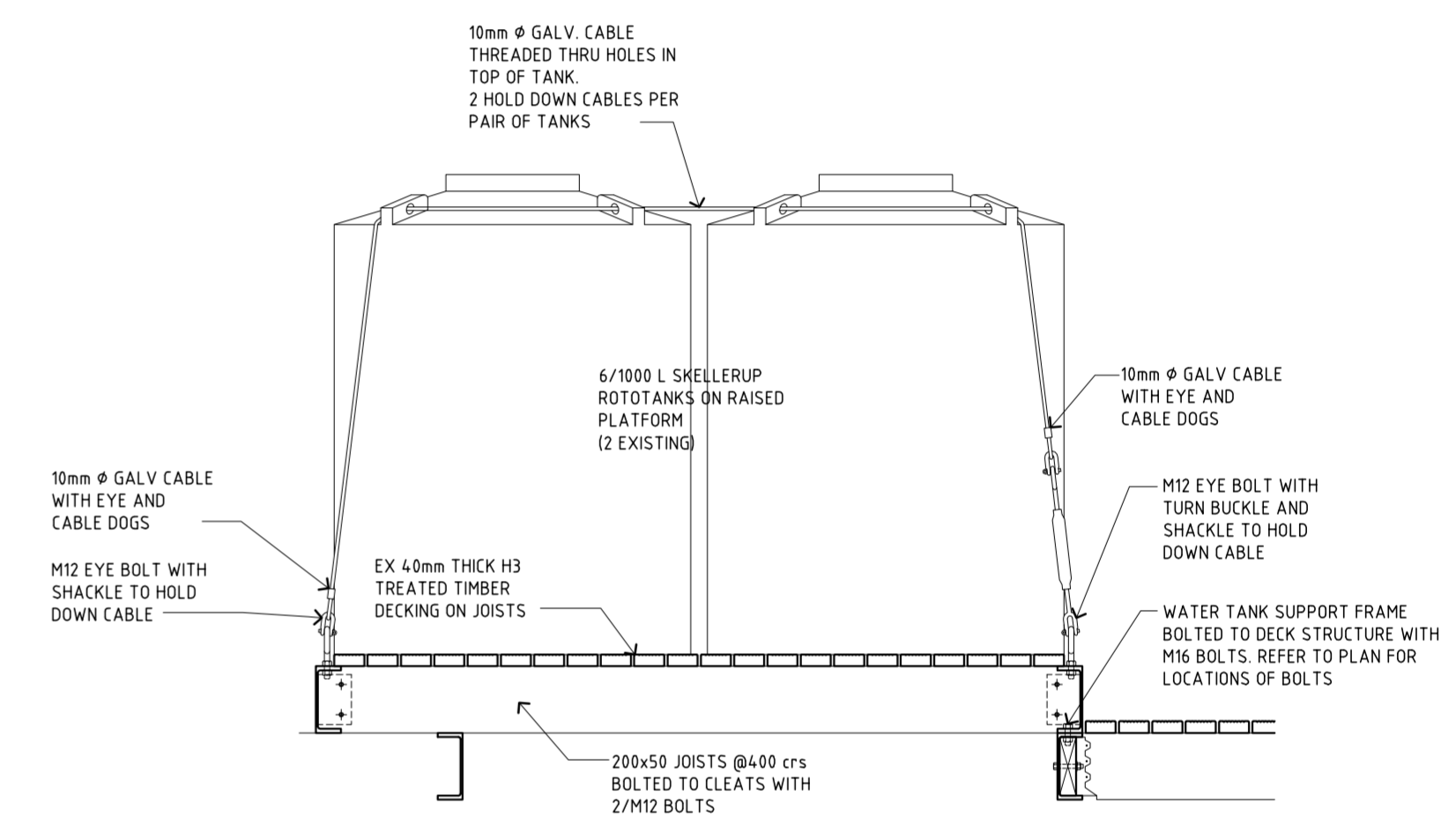
4 EXIT STAIR AND DECK
1:20



2 ENTRY DECK SECTION A
1:20



5 WATER TANK SUPPORT FRAME
1:20



6 SECTION THRU TANK SUPPORT FRAME
1:20

REV	AMENDMENTS	DATE	INITIAL

COPYRIGHT © Warburton Team Architecture Ltd. and Montgomery Watson New Zealand Ltd.		
XREFS :		
SURVEYED	Name	Date
DESIGNED	WTA	JAN 200
DRAWN	PT	FEB 200
CHECKED		
APPROVED		

WARBURTON
TEAM ARCHITECTURE

Warburton Team Architecture Ltd
184 High Street, Dunedin
PO Box 1426, Dunedin
Telephone 03 474 1825,
Facsimile 03 479 2311
Email warbarch@xtra.co.nz

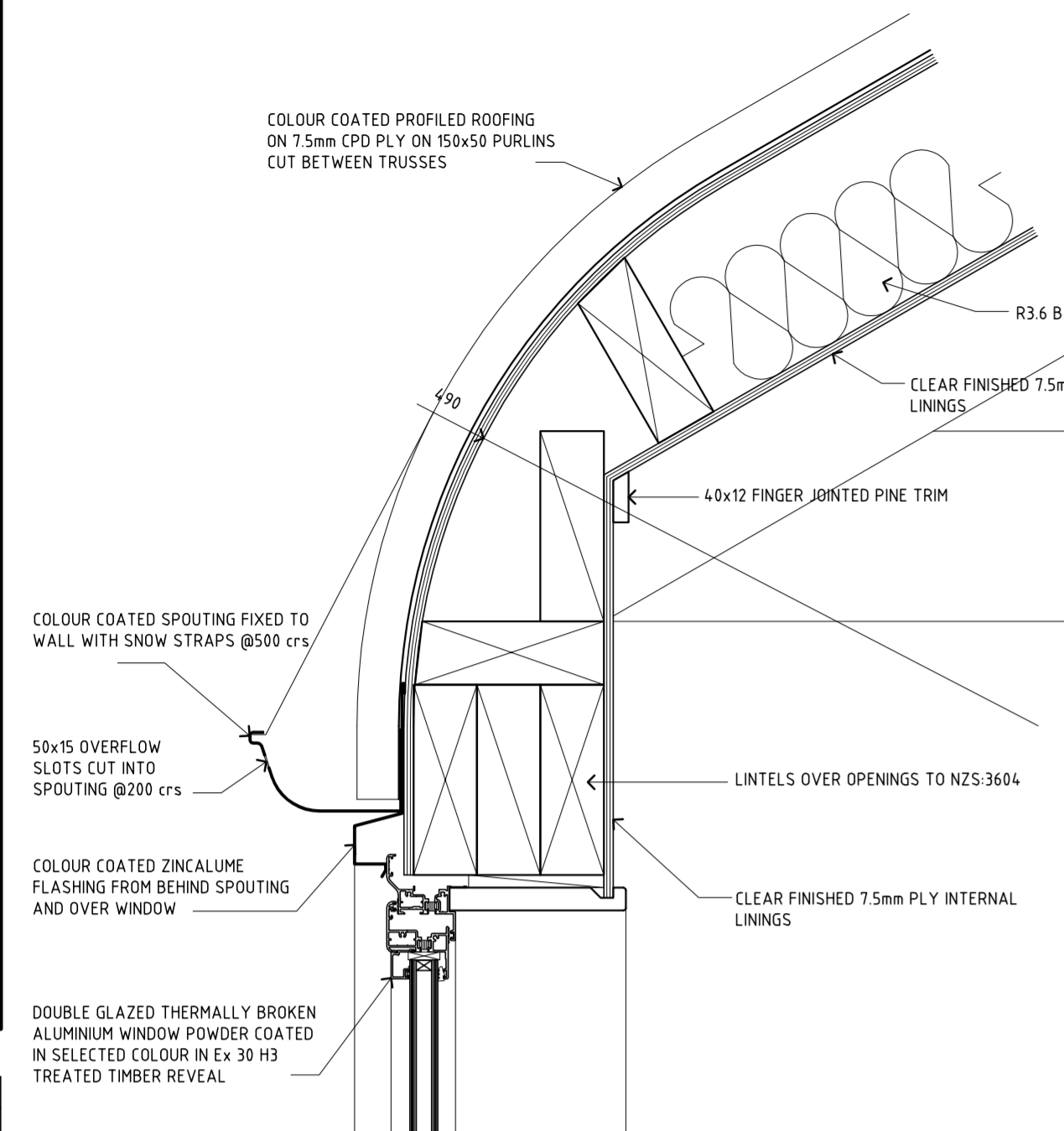
MWH
MONTGOMERY WATSON HARZA

MUELLER HUT REPLACEMENT, MT COOK
DEPARTMENT OF CONSERVATION
DECK DETAILS

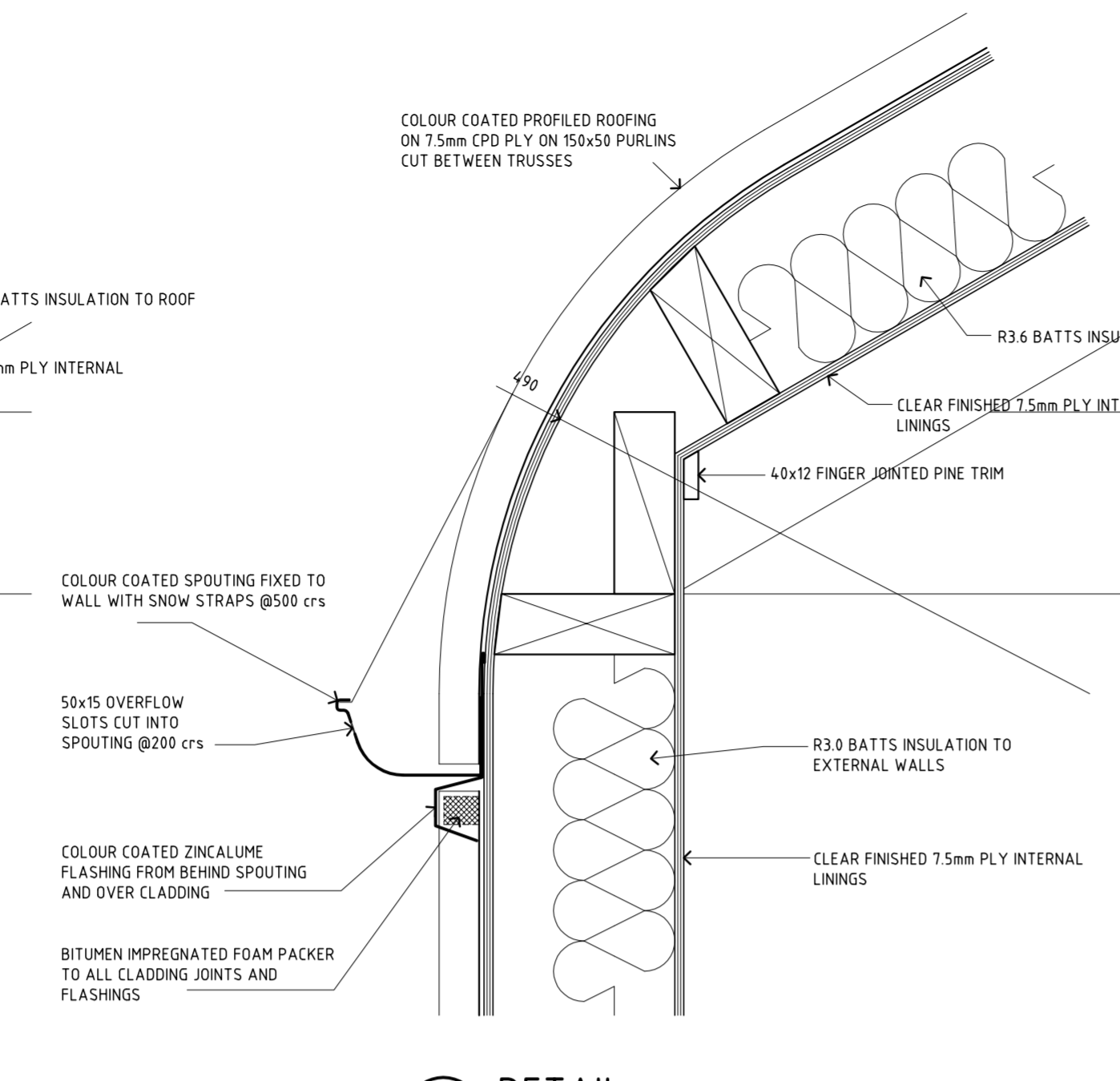
Status Stamp	AS BUILT
Date Stamp	19.09.2003
SCALES	1:50, 1:20
CAD REF :	
Job No.	0133
Sheet No.	A003
Rev.	

ORIGINAL SIZE A4
200 DO NOT SCALE - IF IN DOUBT, ASK

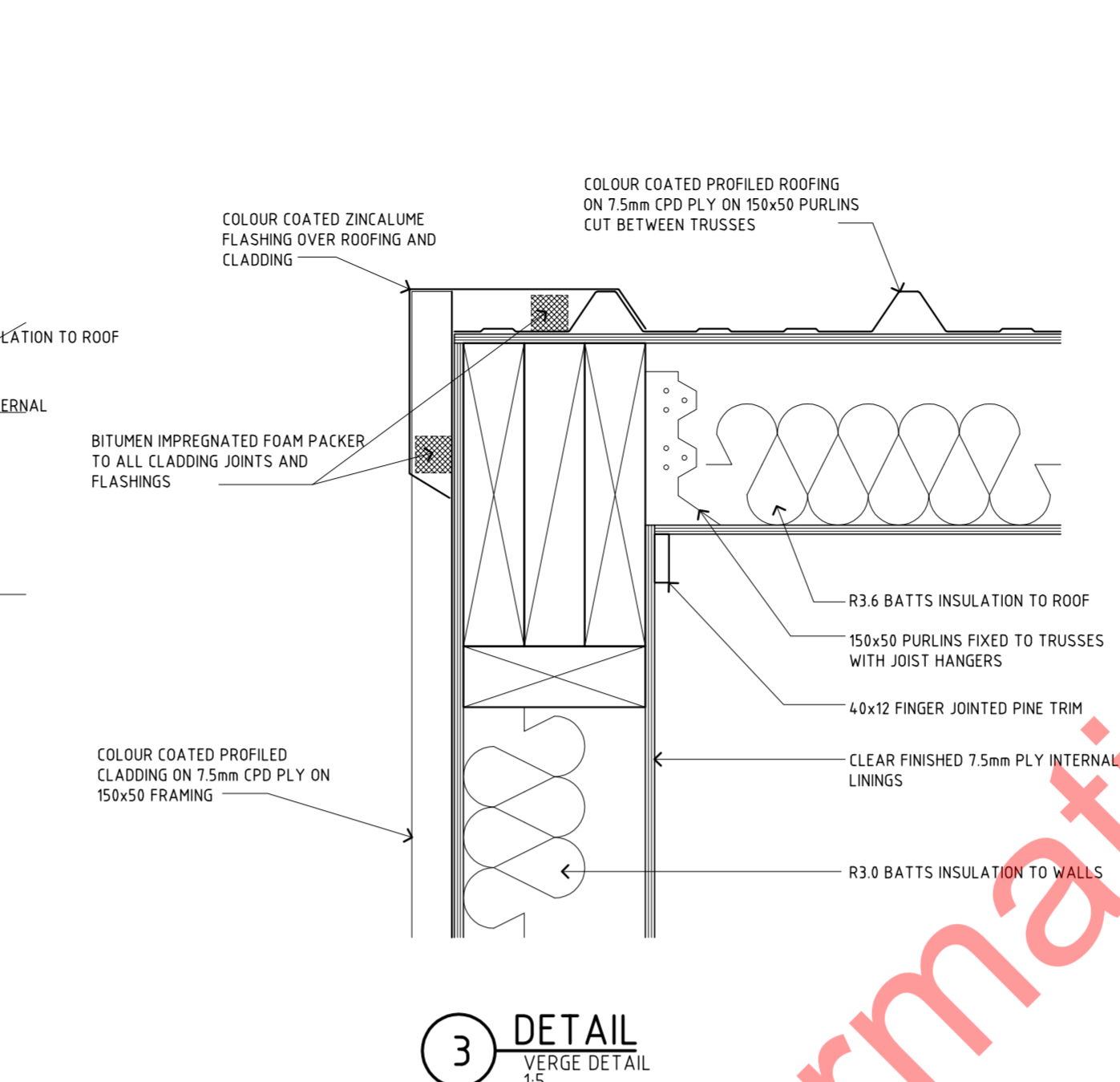
1 DETAIL
EAVES ABOVE WINDOWS
15



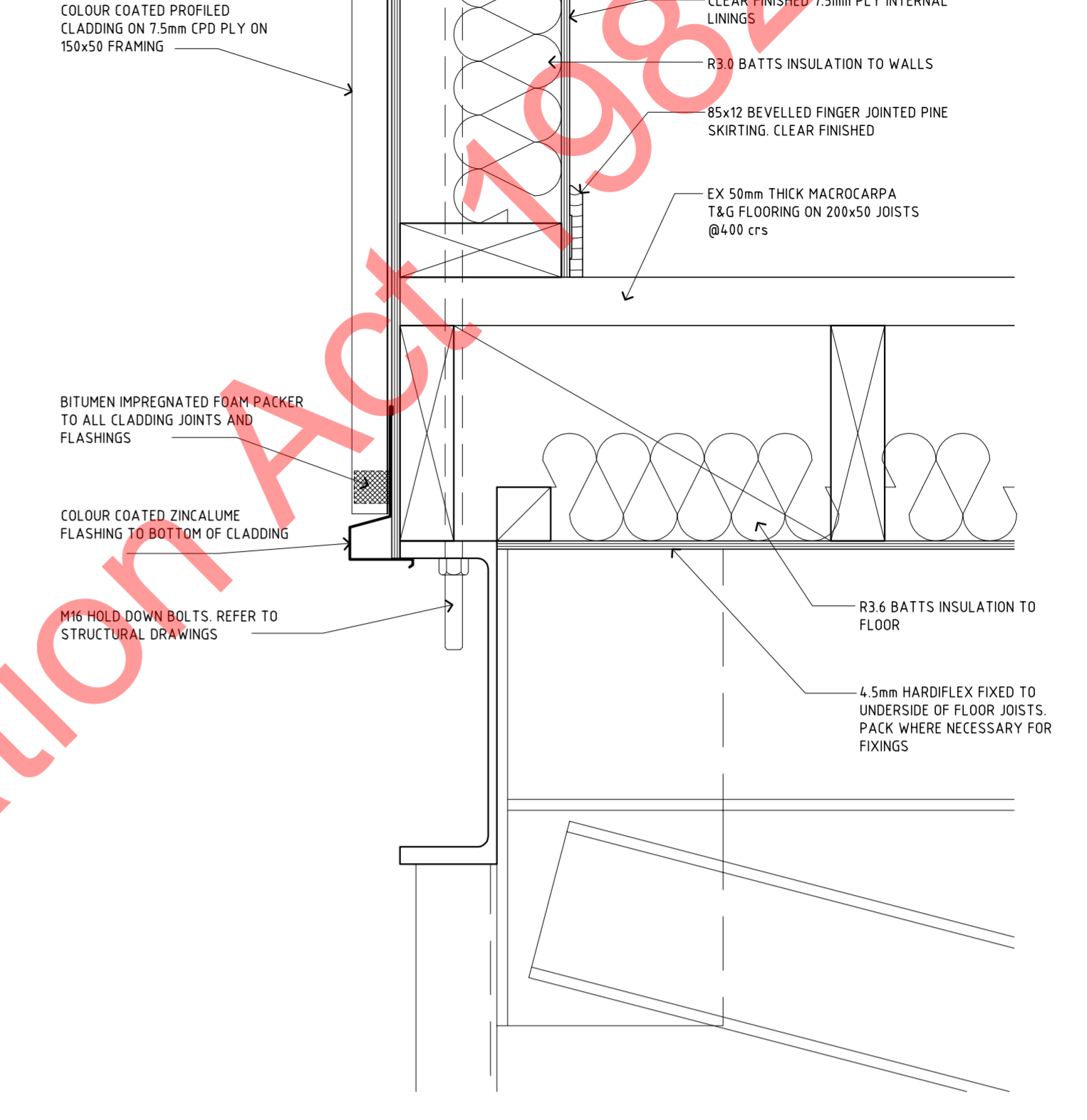
2 DETAIL
TYPICAL EAVES DETAIL
15



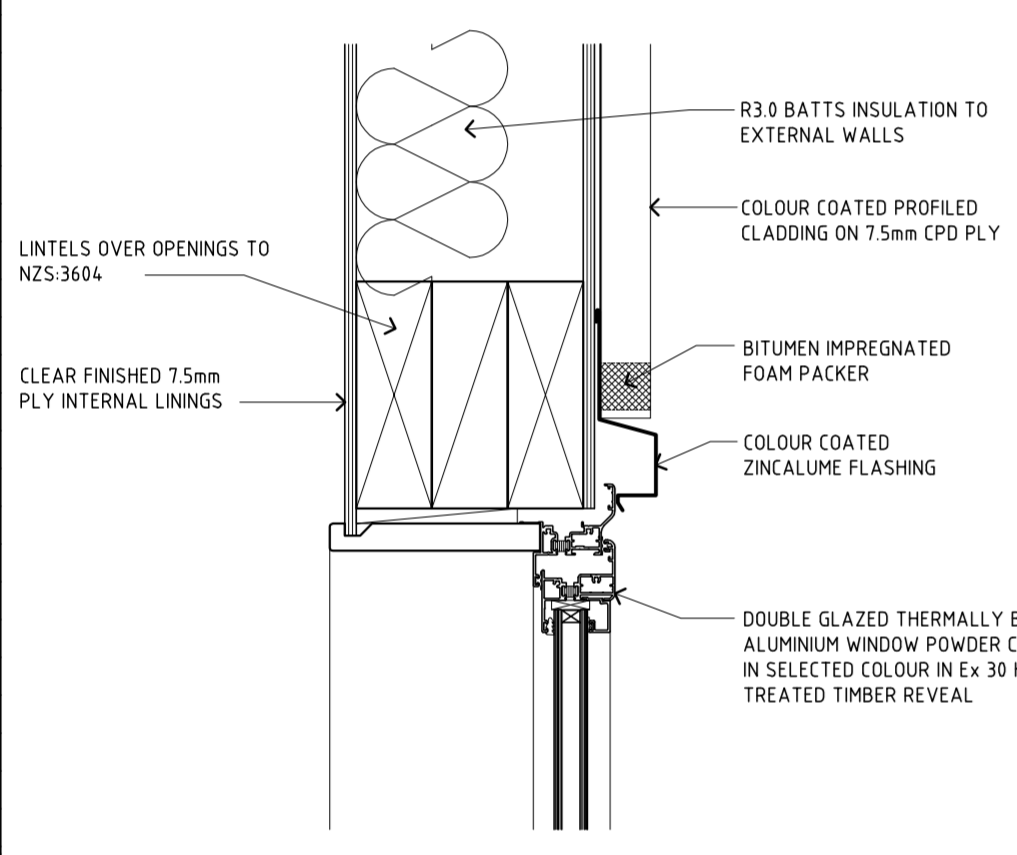
3 DETAIL
VERGE DETAIL
15



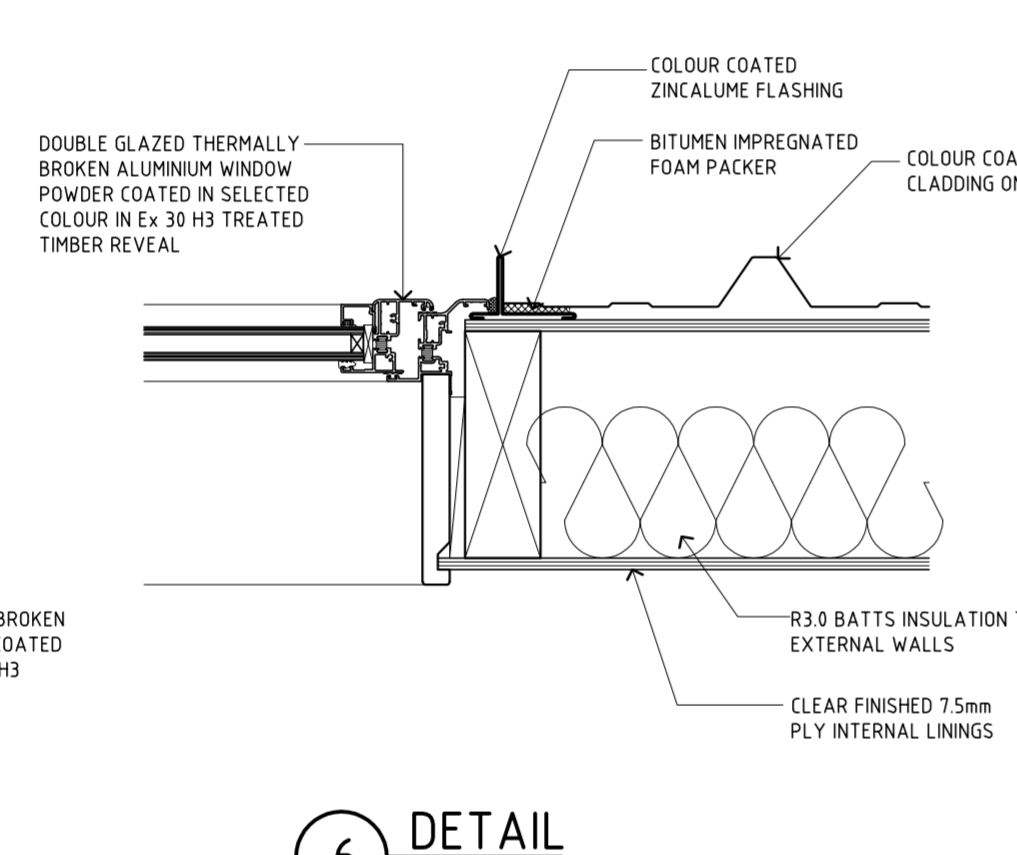
4 DETAIL
TYPICAL WALL / FLOOR JUNCTION
15



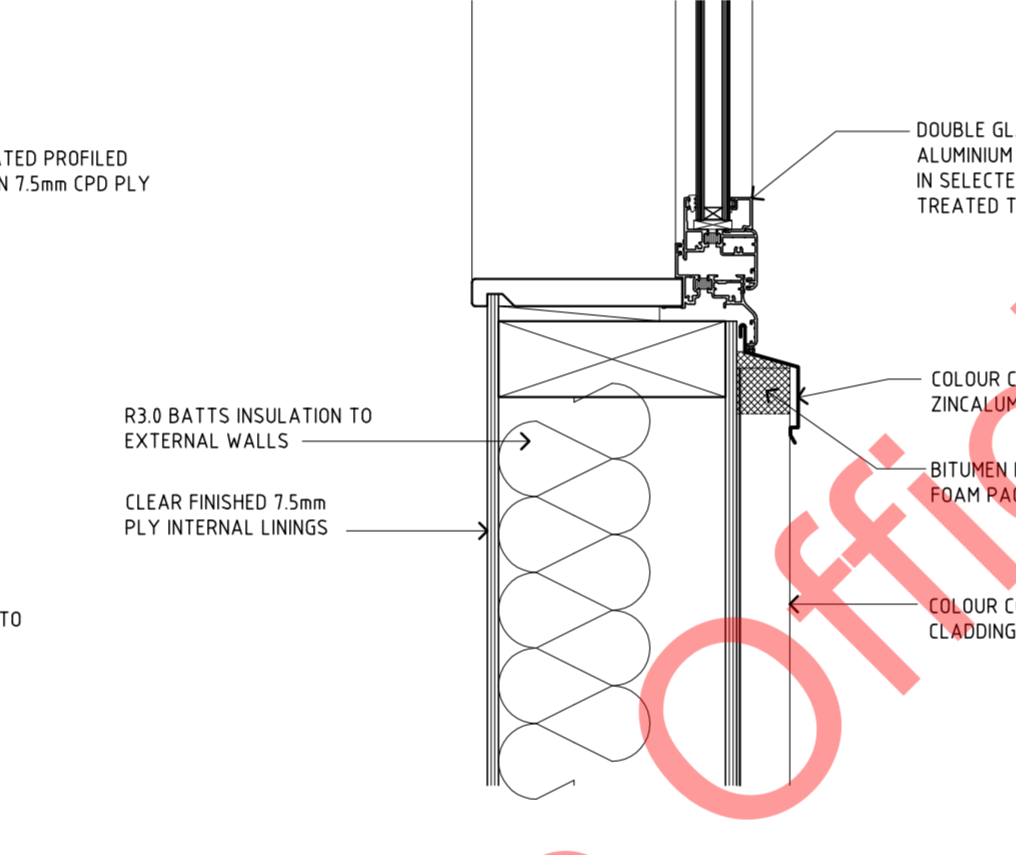
5 DETAIL
TYPICAL WINDOW HEAD
15



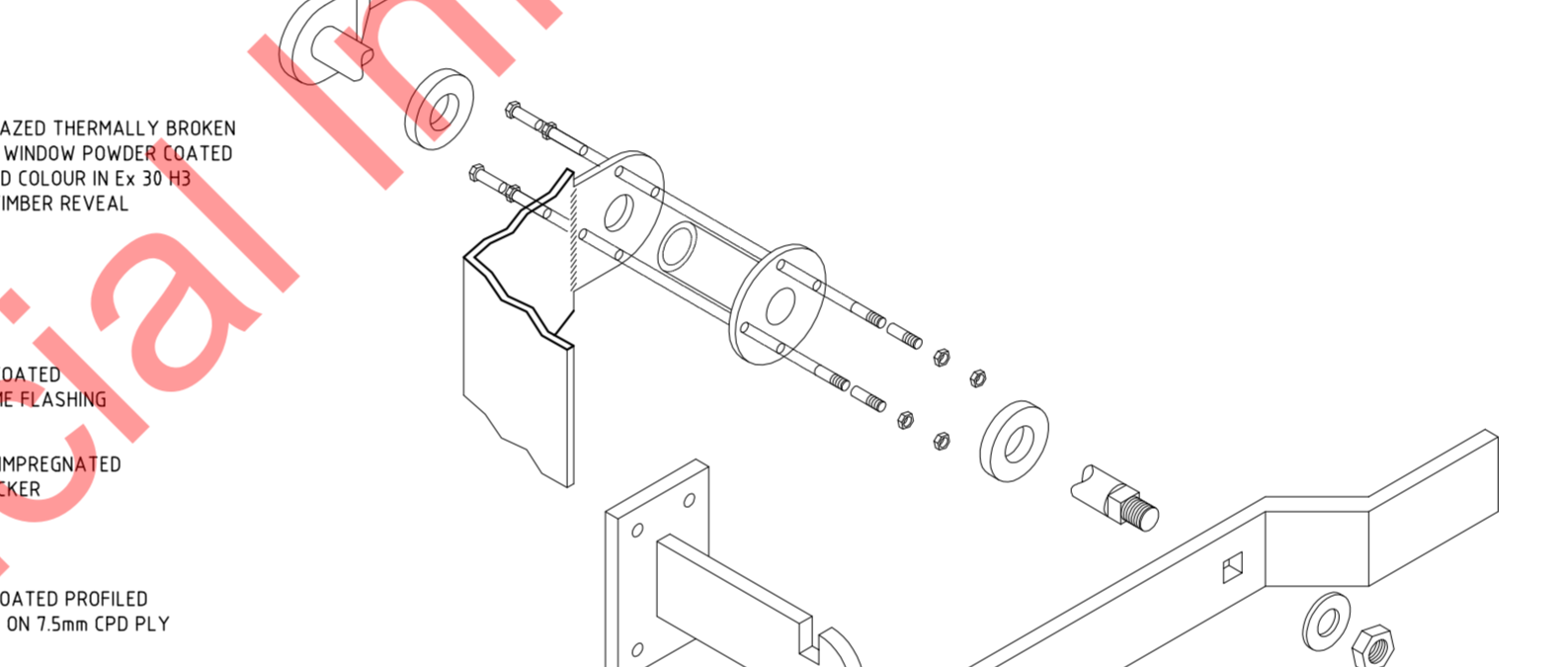
6 DETAIL
TYPICAL WINDOW JAMB
15



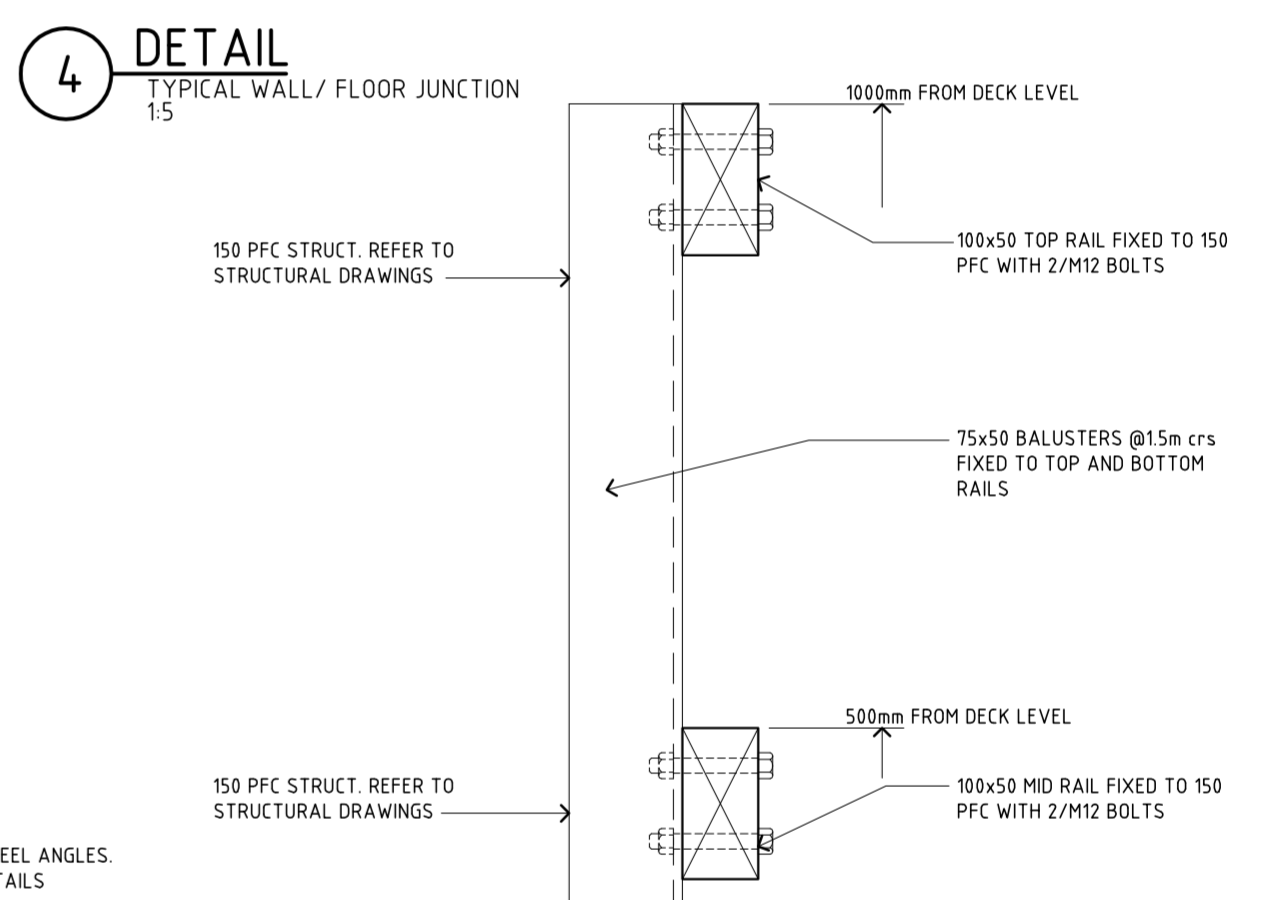
7 DETAIL
TYPICAL WINDOW SILL
15



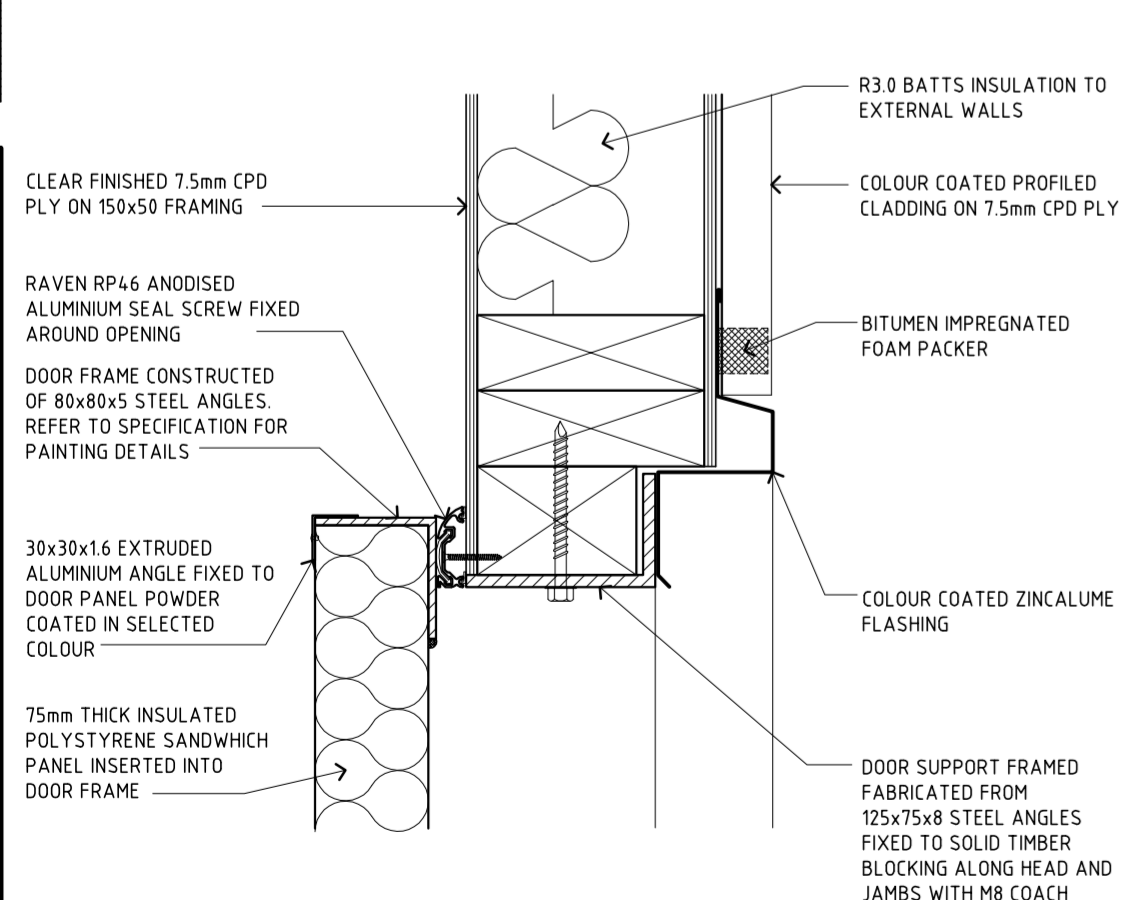
8 DETAIL
ISOMETRIC VIEW OF DOOR LATCH
NTS



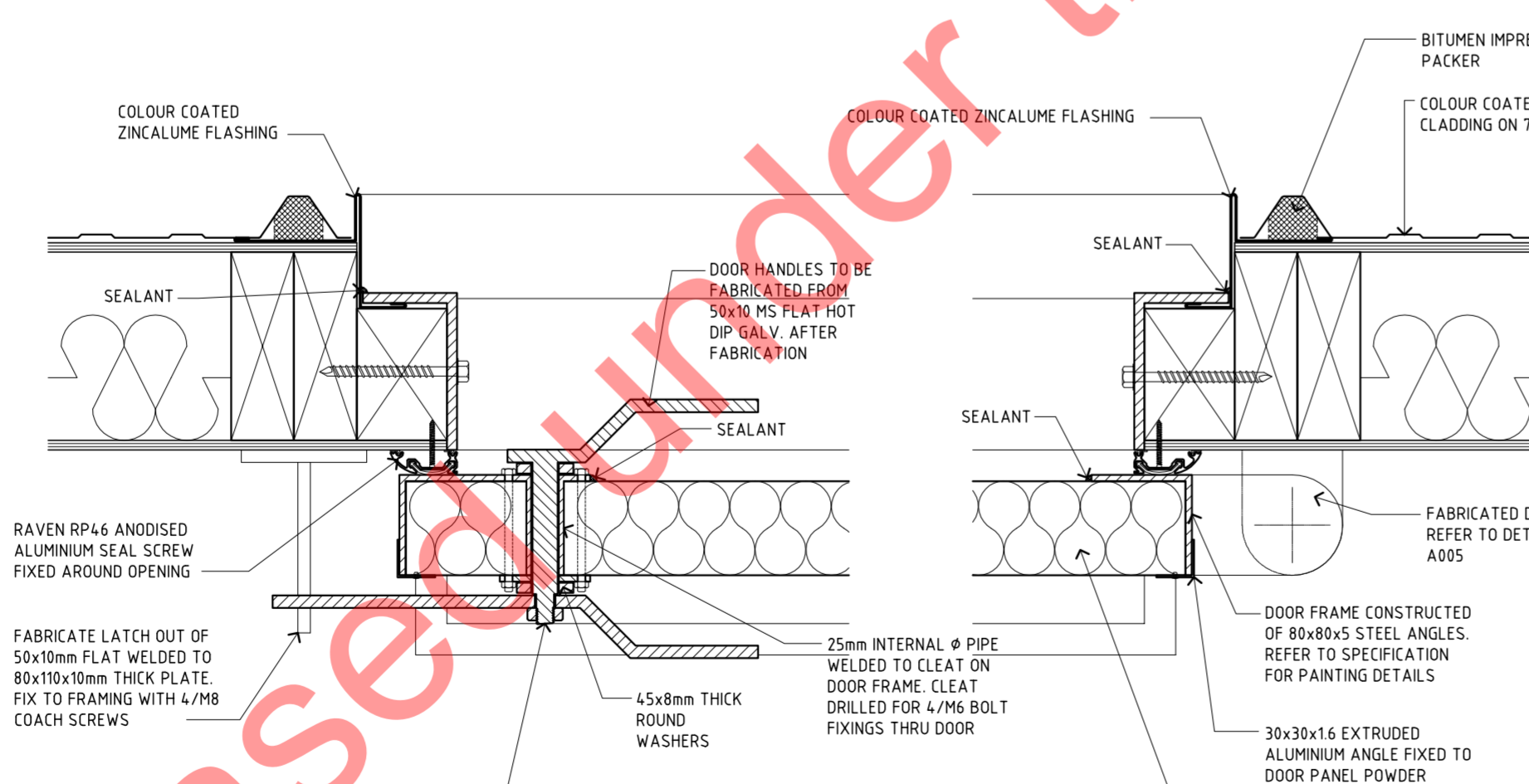
9 DETAIL
BALUSTRADE DETAIL
15



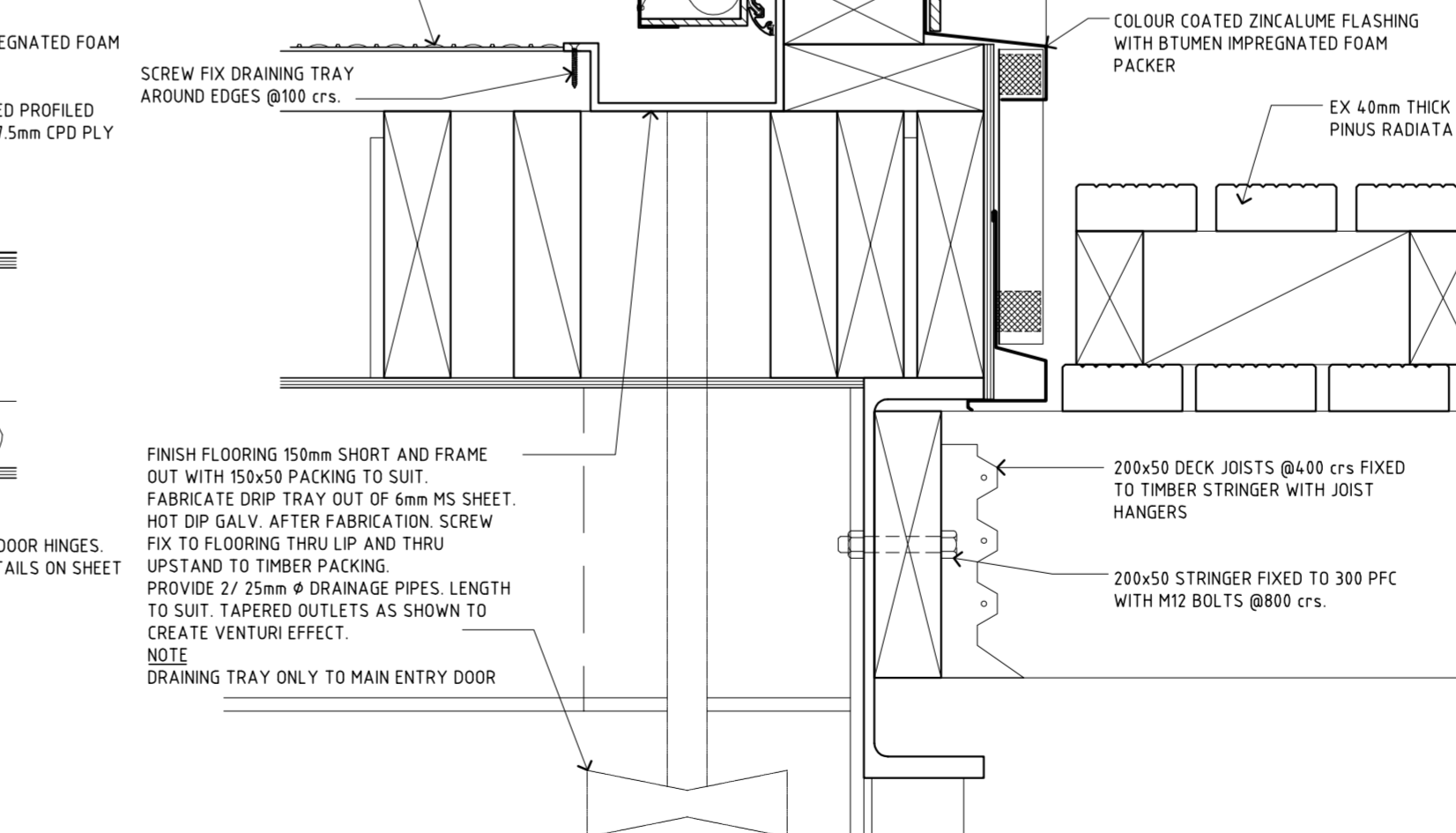
10 DETAIL
ENTRY DOOR HEAD
15



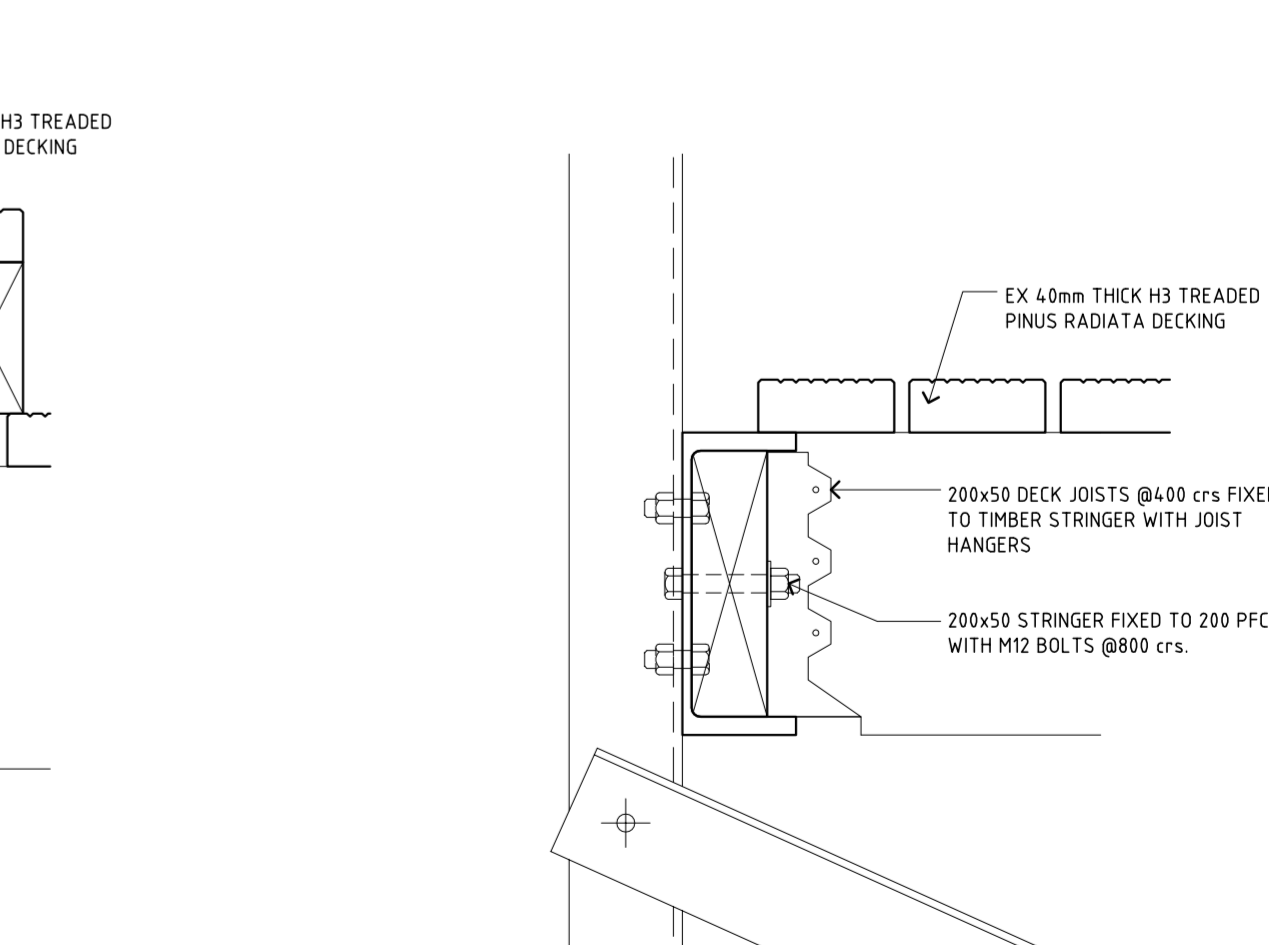
11 DETAIL
ENTRY DOOR JAMB
15



12 DETAIL
ENTRY DOOR SILL
15



13 DETAIL
BALUSTRADE / DECK DETAIL
15



REV	AMENDMENTS	DATE	INITIAL

COPYRIGHT © Warburton Team Architecture Ltd. and Montgomery Watson New Zealand Ltd.		
XREFS :		
	Name	Date
SURVEYED	WTA	JAN 200
DESIGNED	PT	FEB 200
DRAWN		
CHECKED		
APPROVED		

WARBURTON
TEAM ARCHITECTURE

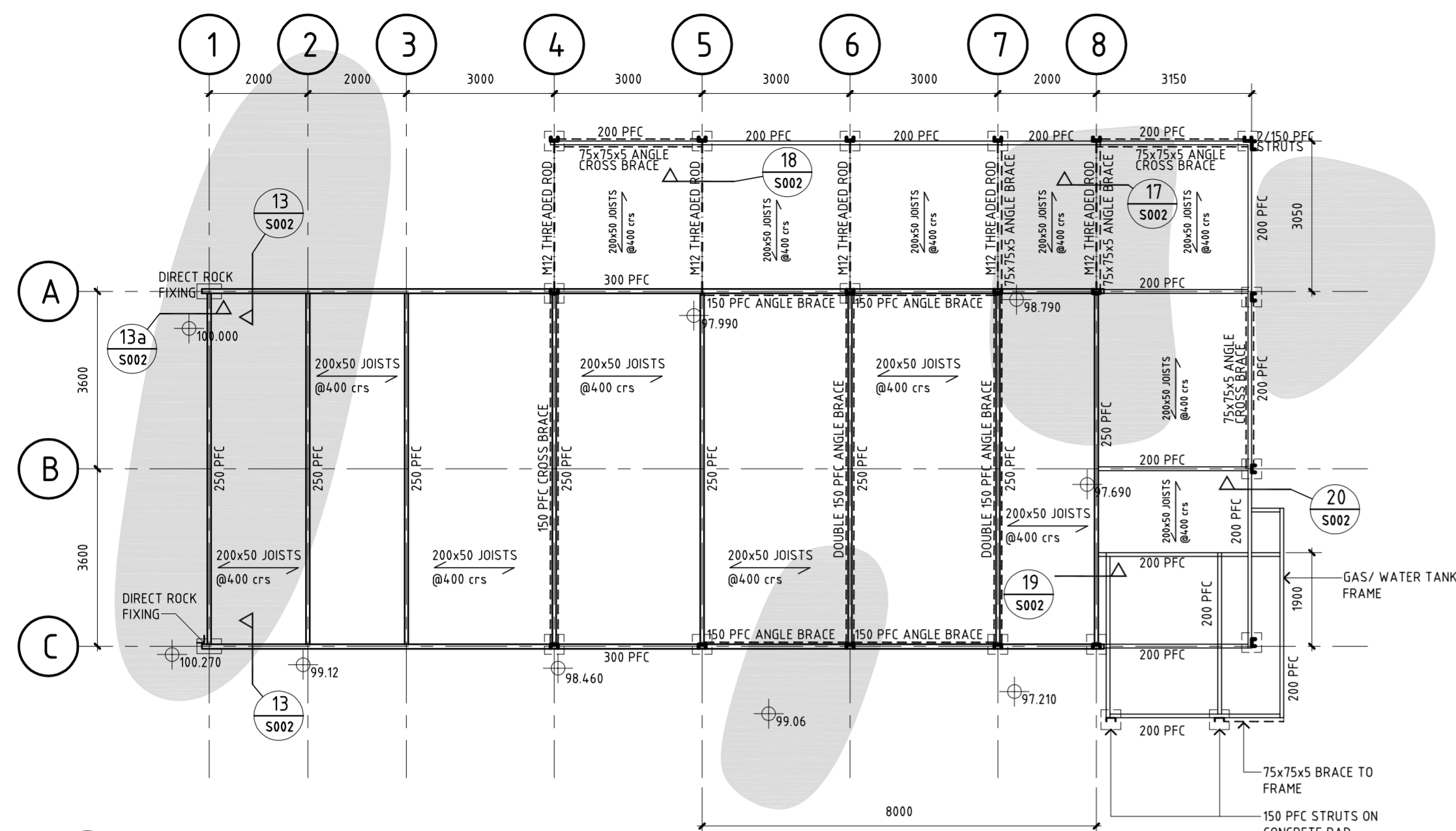
Warburton Team Architecture Ltd
184 High Street, Dunedin
PO Box 1426, Dunedin
Telephone 03 474 1825,
Facsimile 03 479 2311
Email warbarch@tra.co.nz

MWH
MONTGOMERY WATSON HARZA

MUELLER HUT REPLACEMENT, MT COOK
DEPARTMENT OF CONSERVATION
CONSTRUCTION DETAILS

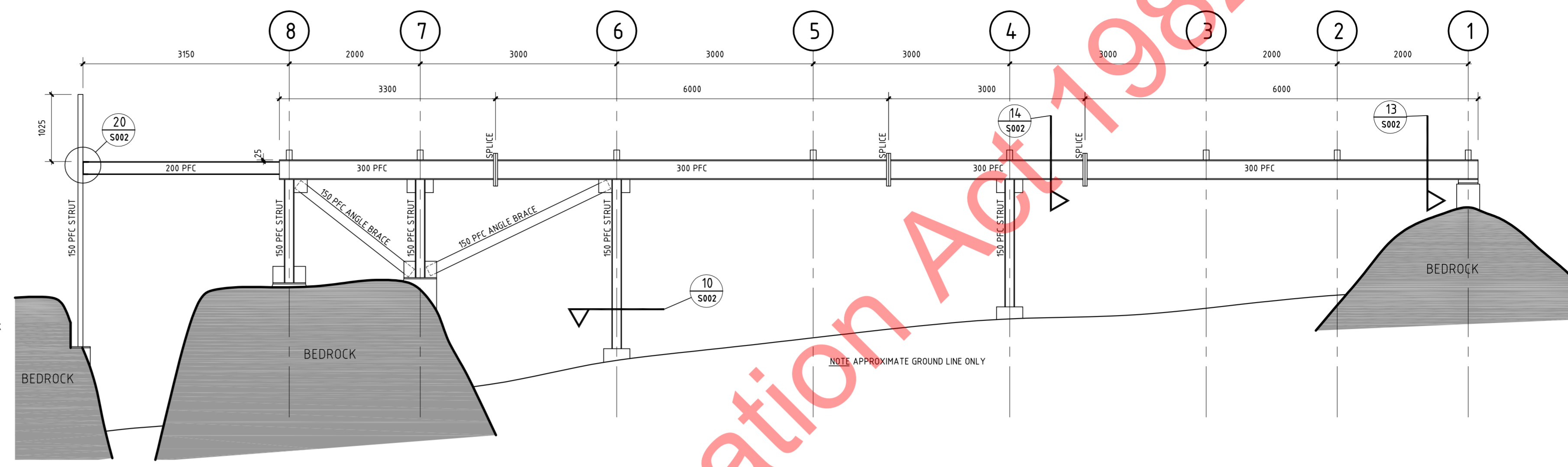
Status Stamp	AS BUILT
Date Stamp	19.09.2003
SCALES : 1:5	CAD REF :
Job No. 0133	Sheet No. A004
Rev.	

ORIGINAL SIZE A1 10 20 30 40 50 60 70 80 90 100 150 200 DO NOT SCALE - IF IN DOUBT, ASK

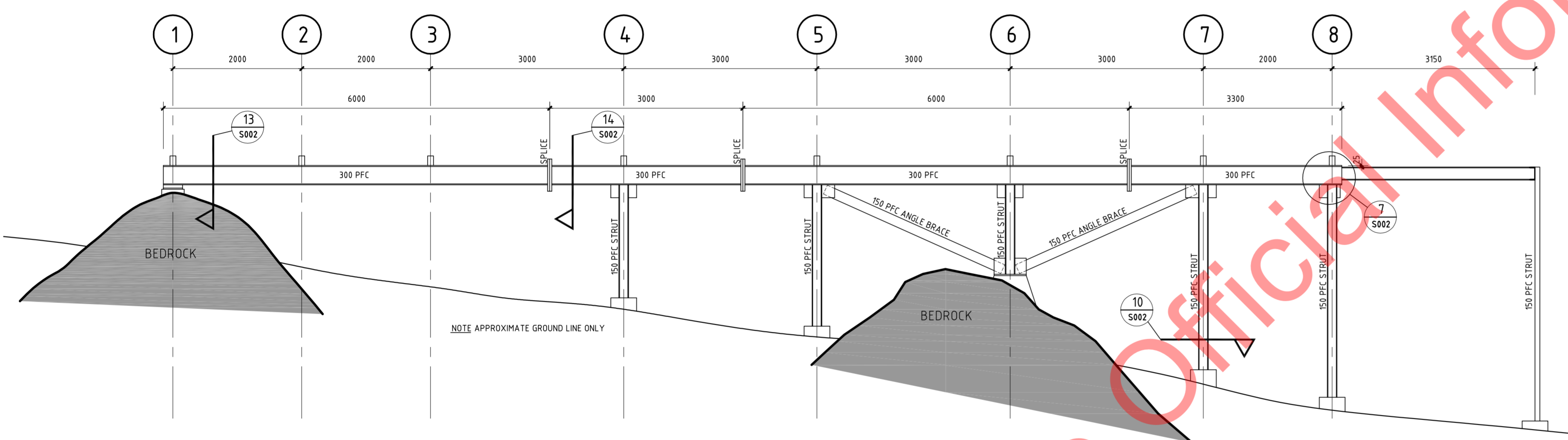


1 STRUCTURAL SETOUT PLAN
1:100
SHADED AREA SHOWING APPROXIMATE LOCATION OF ROCK

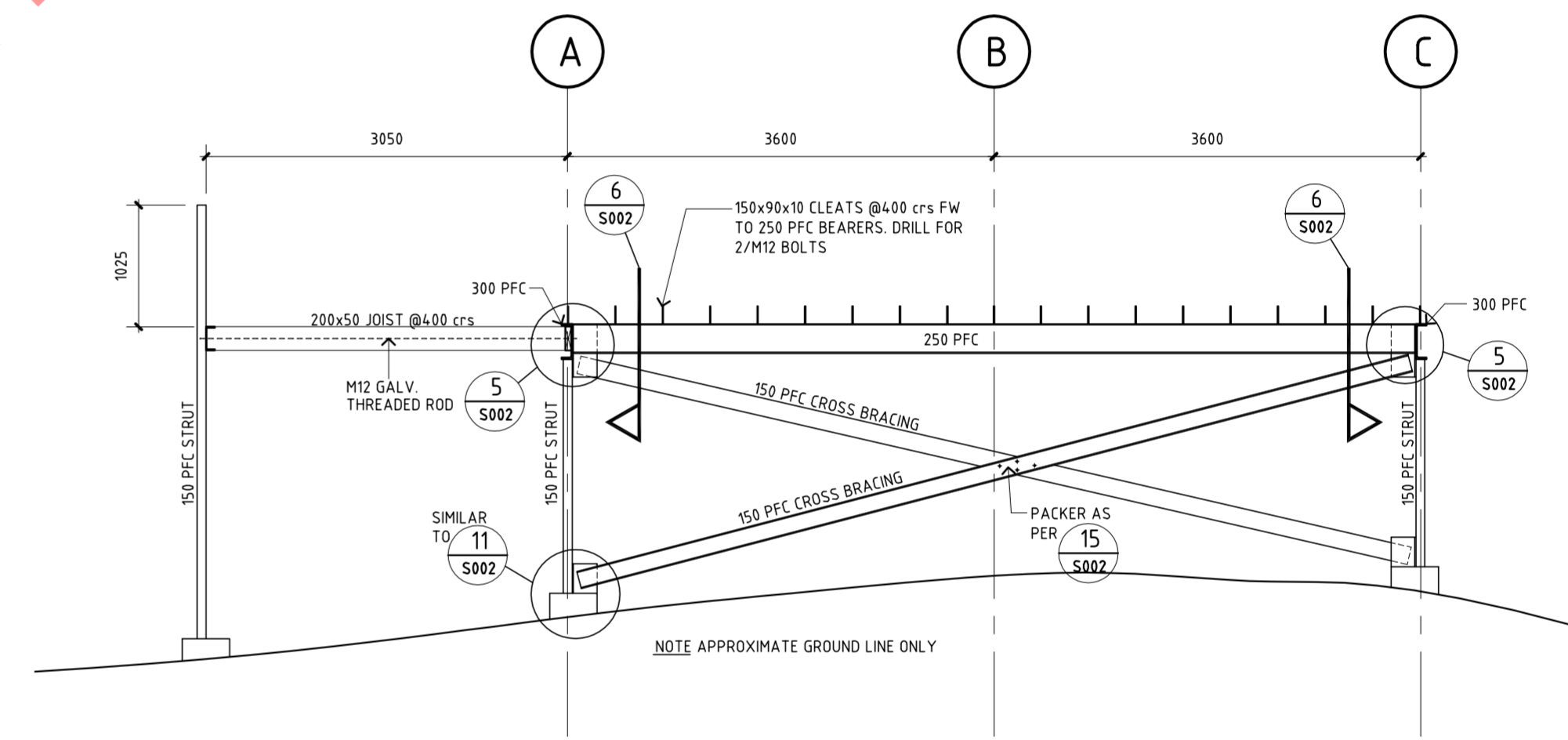
NOTE
STRUTS ON GRID LINES 6 & 7 ARE ADJUSTABLE TO SUIT ROCK FIXINGS BELOW. JOISTS SPANNING BETWEEN GRIDS 5 & 8 ARE TO BE DOUBLED IF SPAN EXCEEDS 3.0m



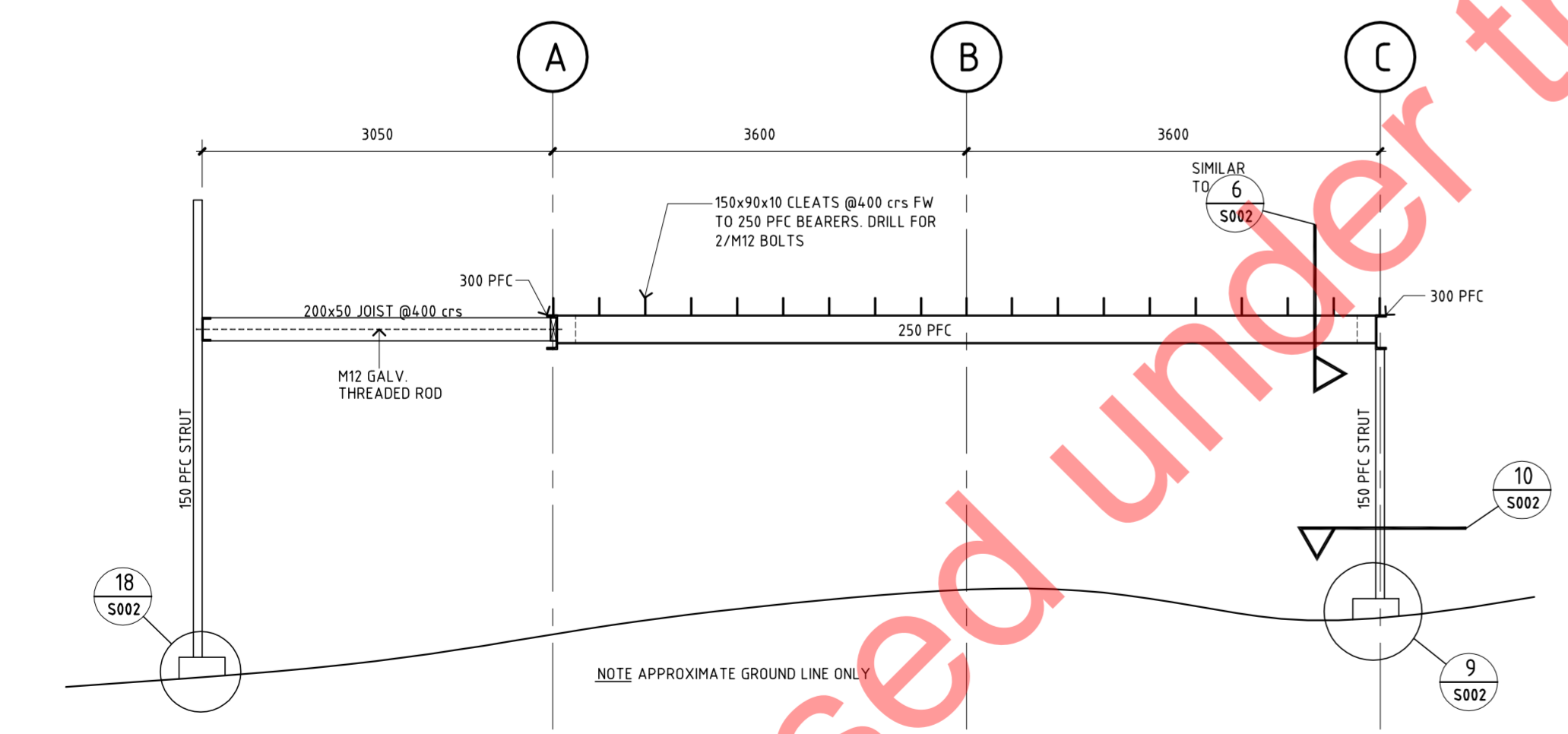
2 ELEVATION ON GRID A
1:50



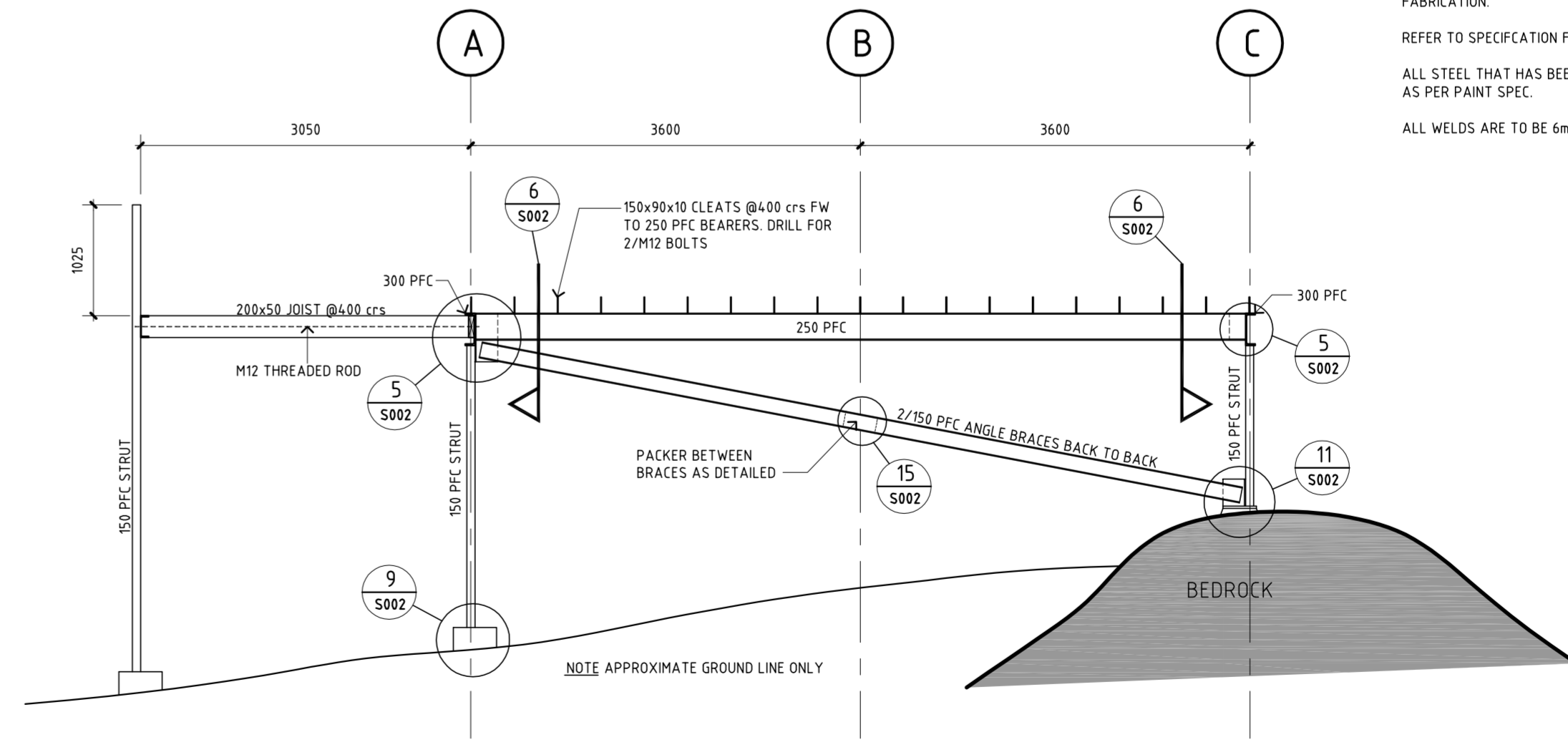
3 ELEVATION ON GRID C
1:50



4 ELEVATION ON GRID 4
1:50



5 ELEVATION ON GRID 5
1:50



6 ELEVATION ON GRID 6
1:50

NOTES
ALL PLYWOOD BRACING TO BE FIXED IN ACCORDANCE WITH CP2.
ALL BOLTS TO BE GRADE 8.8 GALVANISED UNLESS IN CONTACT WITH TANALISED TIMBER. IN WHICH CASE ARE TO BE STAINLESS STEEL.
ALL BASE PLATE FIXING CLEATS ARE TO BE HOT DIP GALV. AFTER FABRICATION.
REFER TO SPECIFICATION FOR DETAILS ON CONSTRUCTION PROCESS.
ALL STEEL THAT HAS BEEN SITE CUT OR DRILLED IS TO BE TOUCHED UP AS PER PAINT SPEC.
ALL WELDS ARE TO BE 6mm FW UNLESS OTHERWISE NOTED.

REV	AMENDMENTS	DATE	INITIAL

COPYRIGHT © Warburton Team Architecture Ltd. and Montgomery Watson New Zealand Ltd.	
XREFS :	
SURVEYED	Name
DESIGNED	Date
DRAWN	
CHECKED	
APPROVED	

WARBURTON
TEAM ARCHITECTURE

Warburton Team Architecture Ltd
184 High Street, Dunedin
PO Box 1426, Dunedin
Telephone 03 474 1825,
Facsimile 03 479 2311
Email warbarch@xtra.co.nz

MWH
MONTGOMERY WATSON HARZA

MULLER HUT REPLACEMENT, MT COOK
DEPARTMENT OF CONSERVATION
STRUCTURAL SETOUT PLAN & GRID ELEVATIONS

Status Stamp	AS BUILT
Date Stamp	19.09.2003
SCALES :	1:100, 1:50
CAD REF :	
Job No.	0133
Sheet No.	S001
Rev.	