

Education New Zealand
Manapou ki te Ao
Level 5, Lambton House
160 Lambton Quay
PO Box 12041
Wellington 6144
New Zealand

P: +64 4 472 0788
E: info@enz.govt.nz

www.enz.govt.nz
www.studyinnewzealand.govt.nz

20 June 2024

John Luke
fyi-request-27163-46aa2909@requests.fyi.org.nz

Dear John Luke

Official Information Act 1982 request – copy of current organisational chart

I refer to your Official Information Act request (OIA), received by Education New Zealand (ENZ) on 6 June 2024;

May I kindly request a current org chart of the organization. Please provide name and title for all customer facing team, I understand some team are public facing and information has already been made public, hence there is no issue disclose their title and full name.

Please find attached a copy of our current organisational chart, as at 6 June 2024.

Please note that it is our policy to proactively release our responses to official information requests, where possible. Please contact us if you have any questions about this.

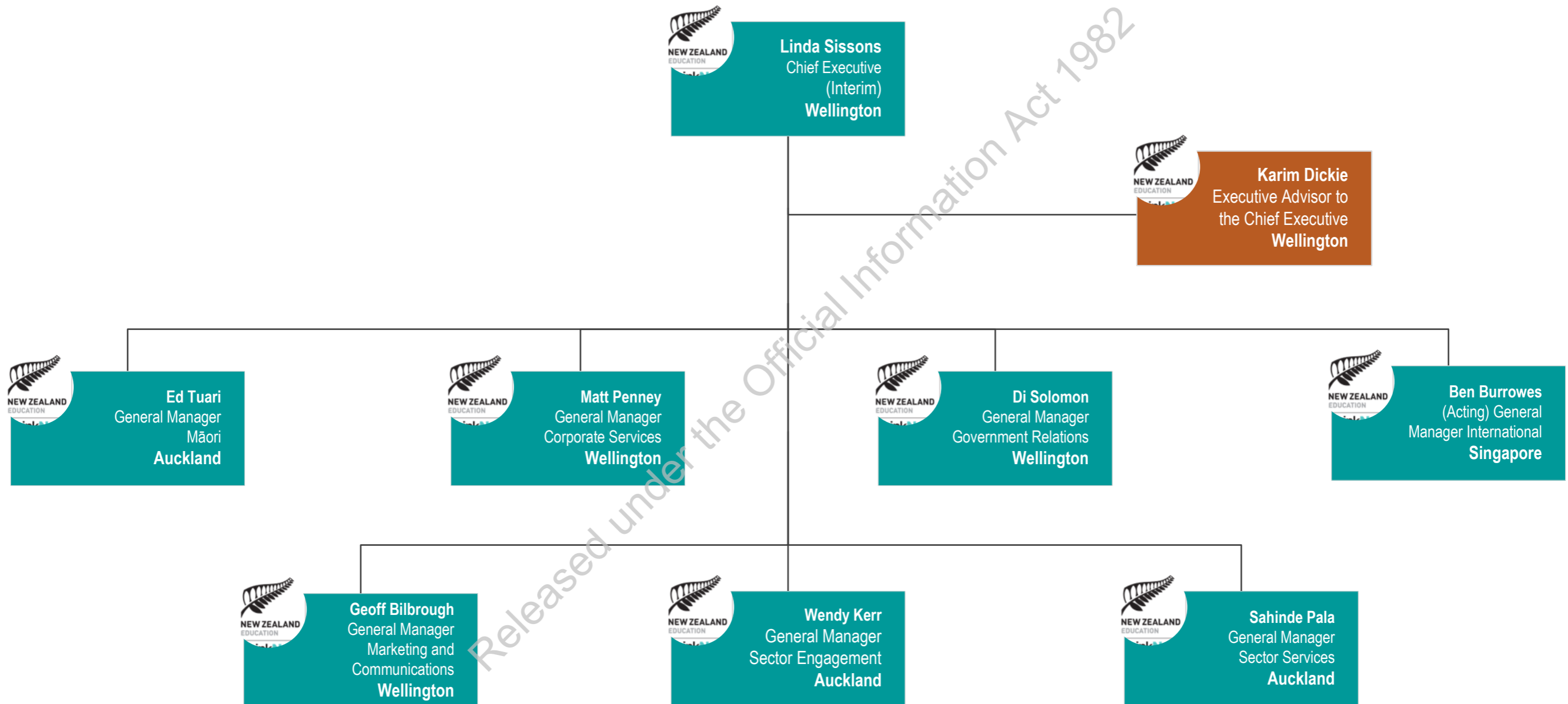
Yours sincerely



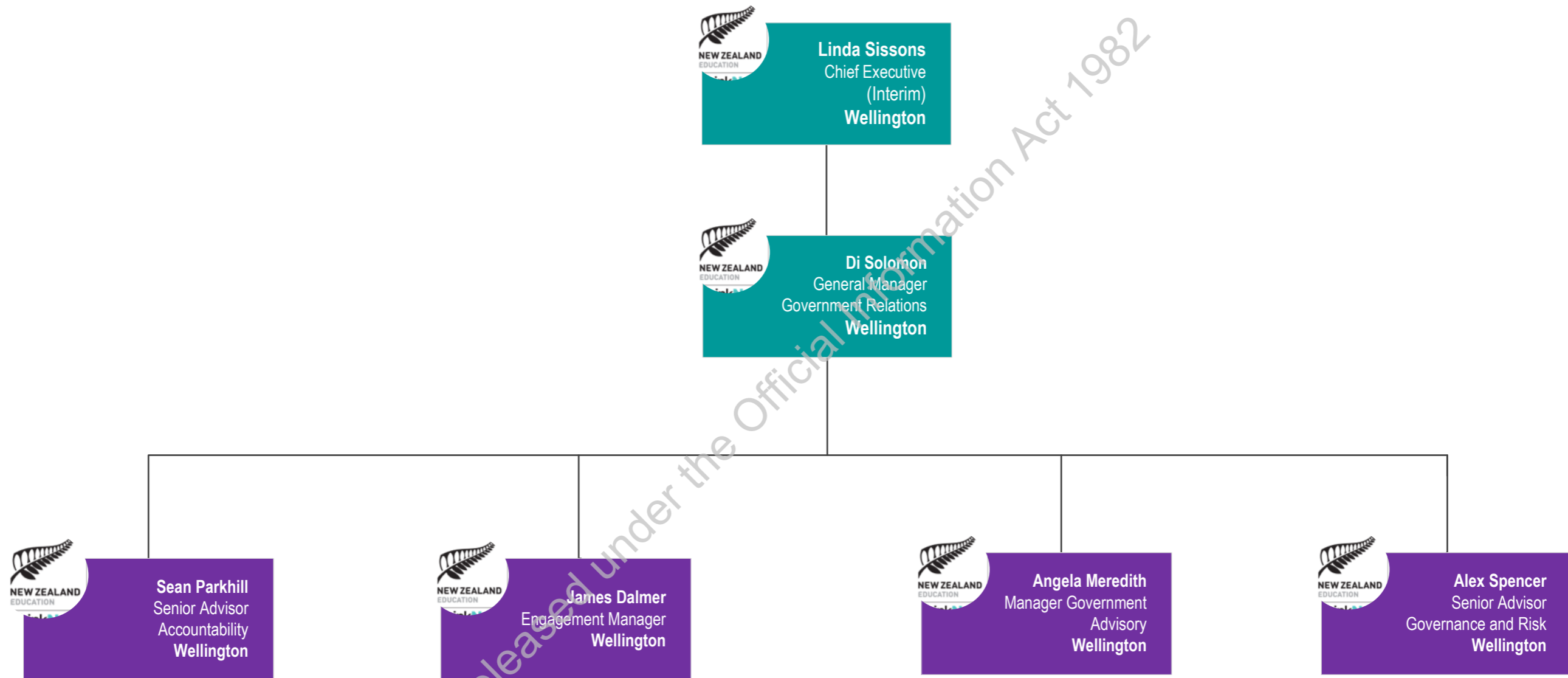
Di Solomon
General Manager
Government Relations

EDUCATION NEW ZEALAND MANAPOU KI TE AO ORGANISATION CHART

SENIOR LEADERSHIP TEAM

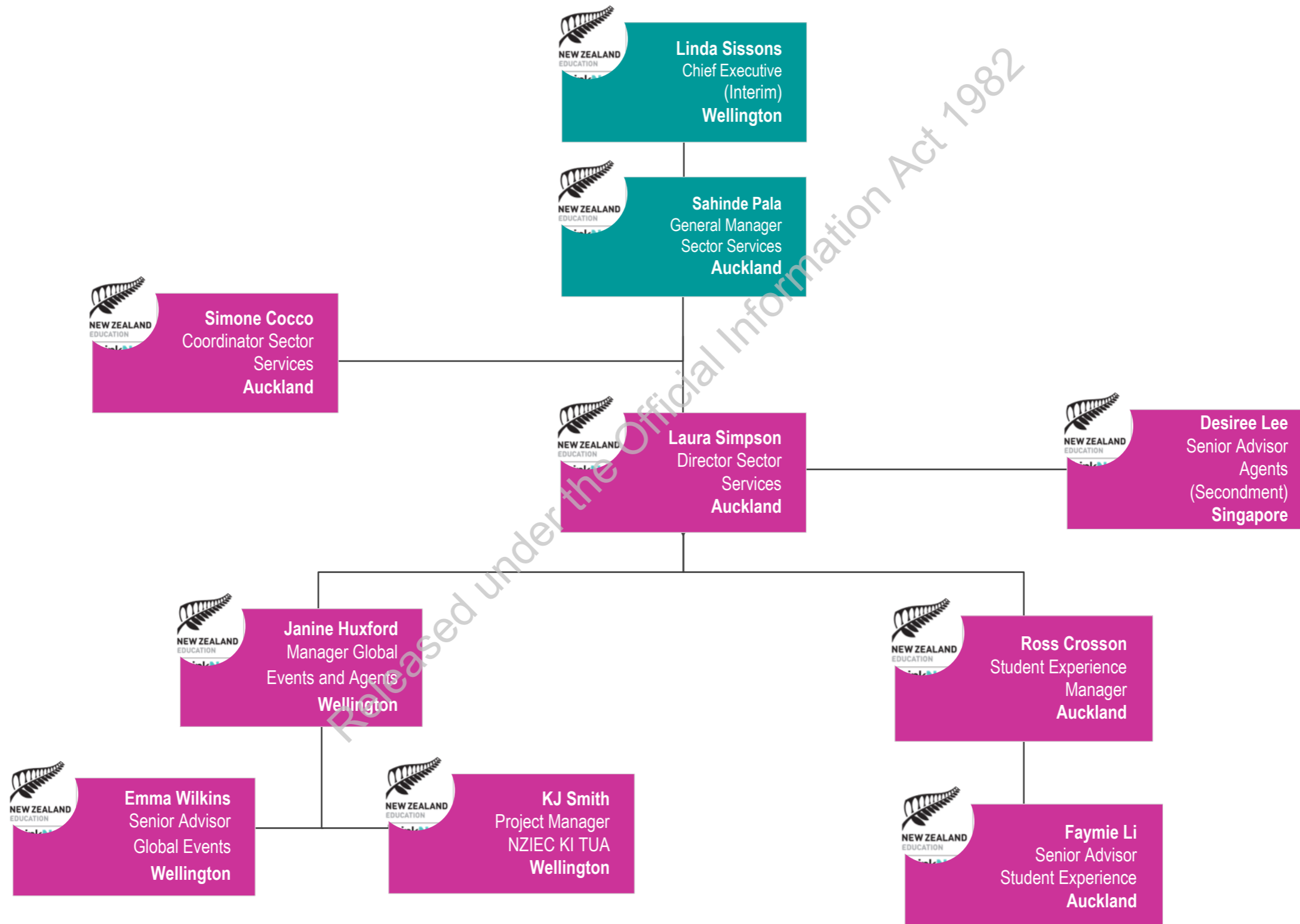


Government Relations

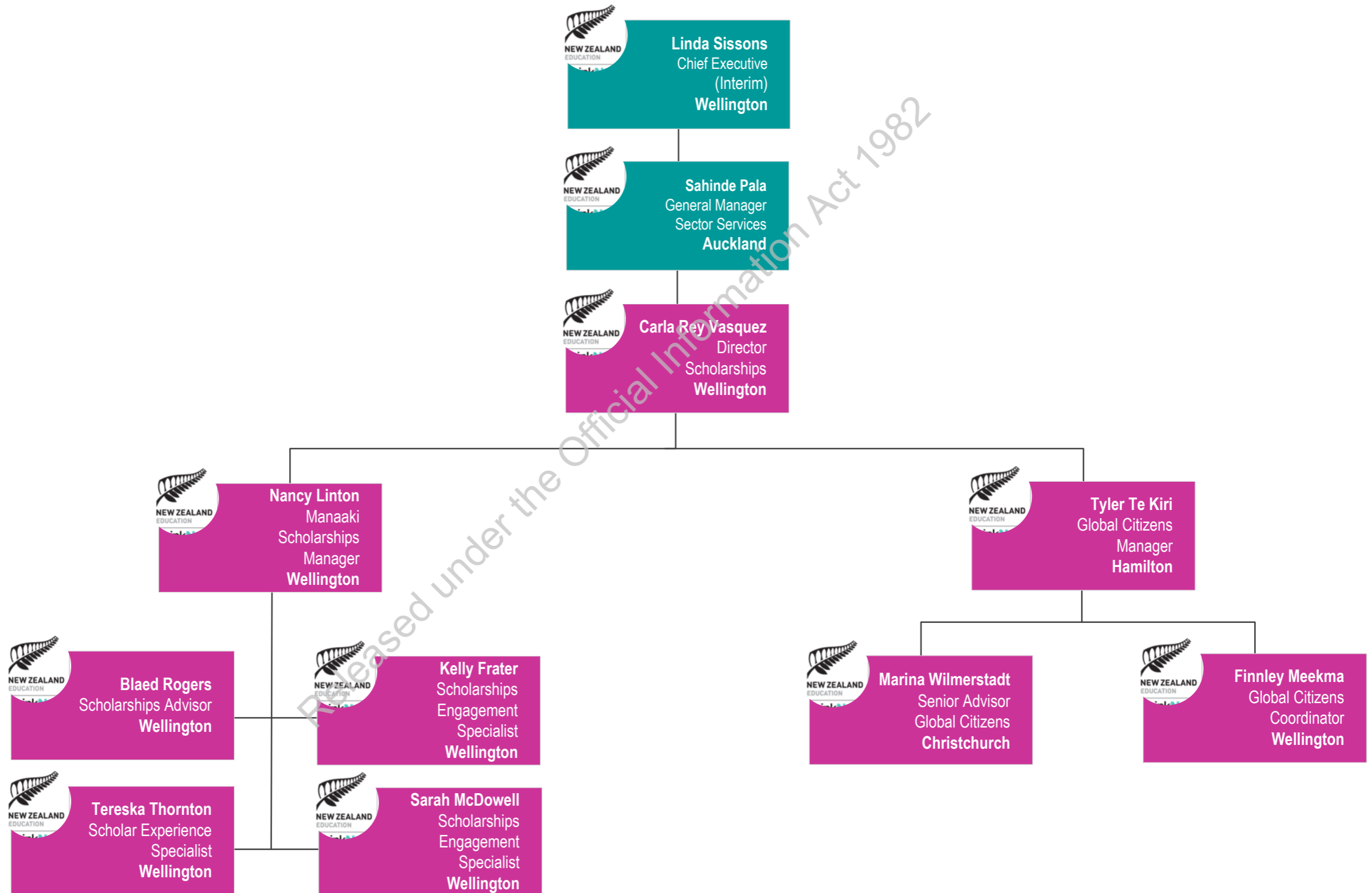


Released under the Official Information Act 1982

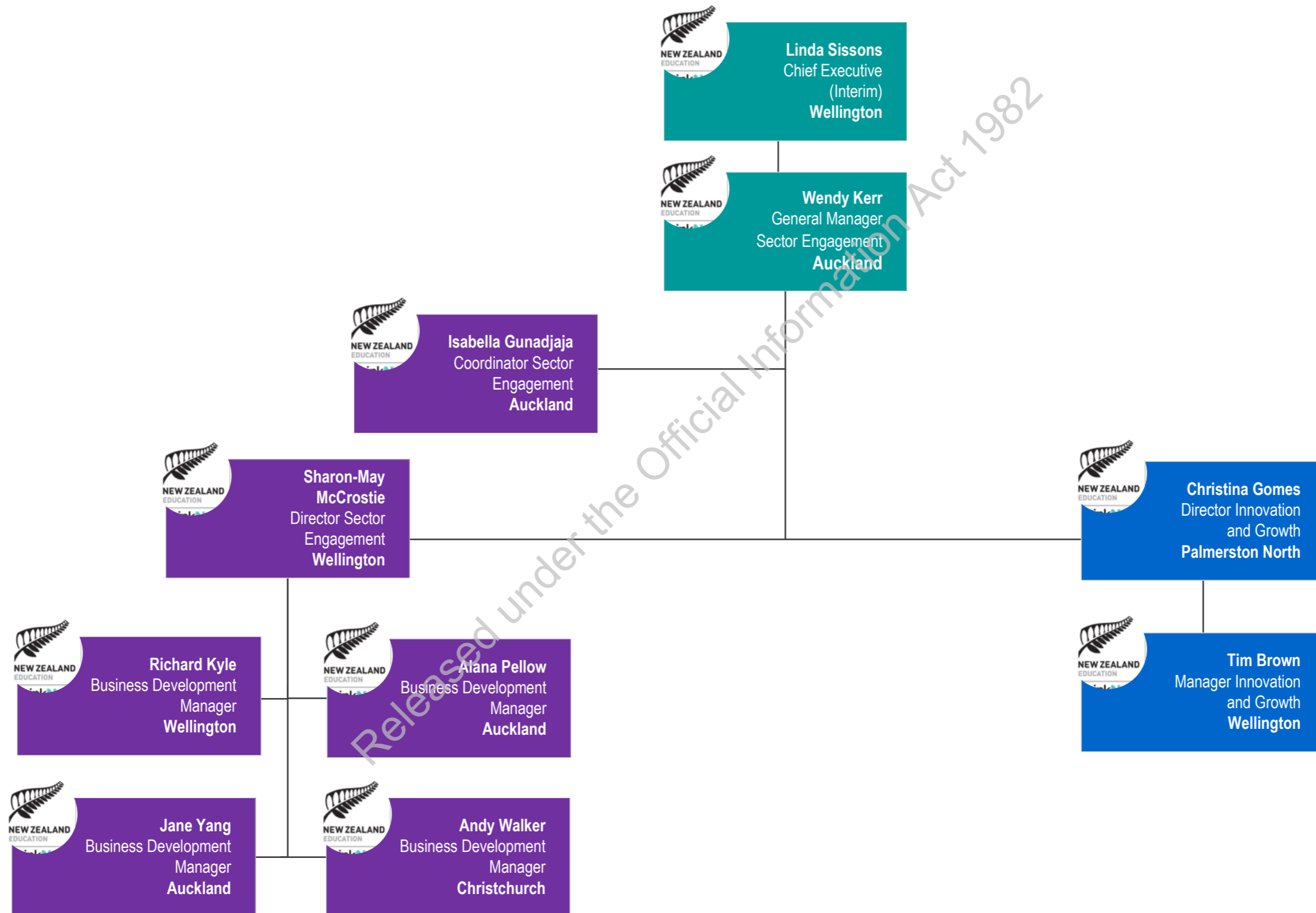
Sector Services 1/2



Sector Services 2/2

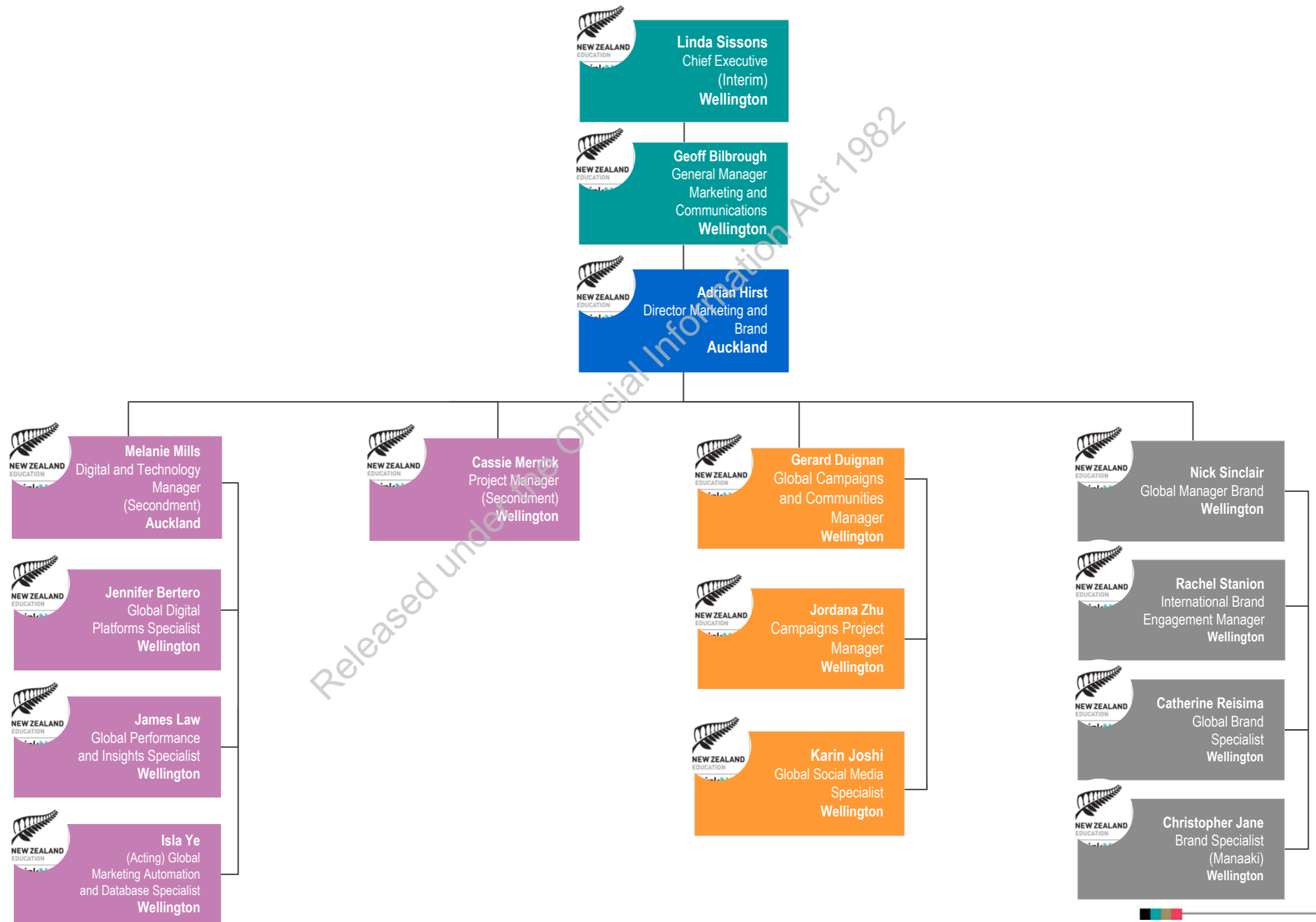


Sector Engagement

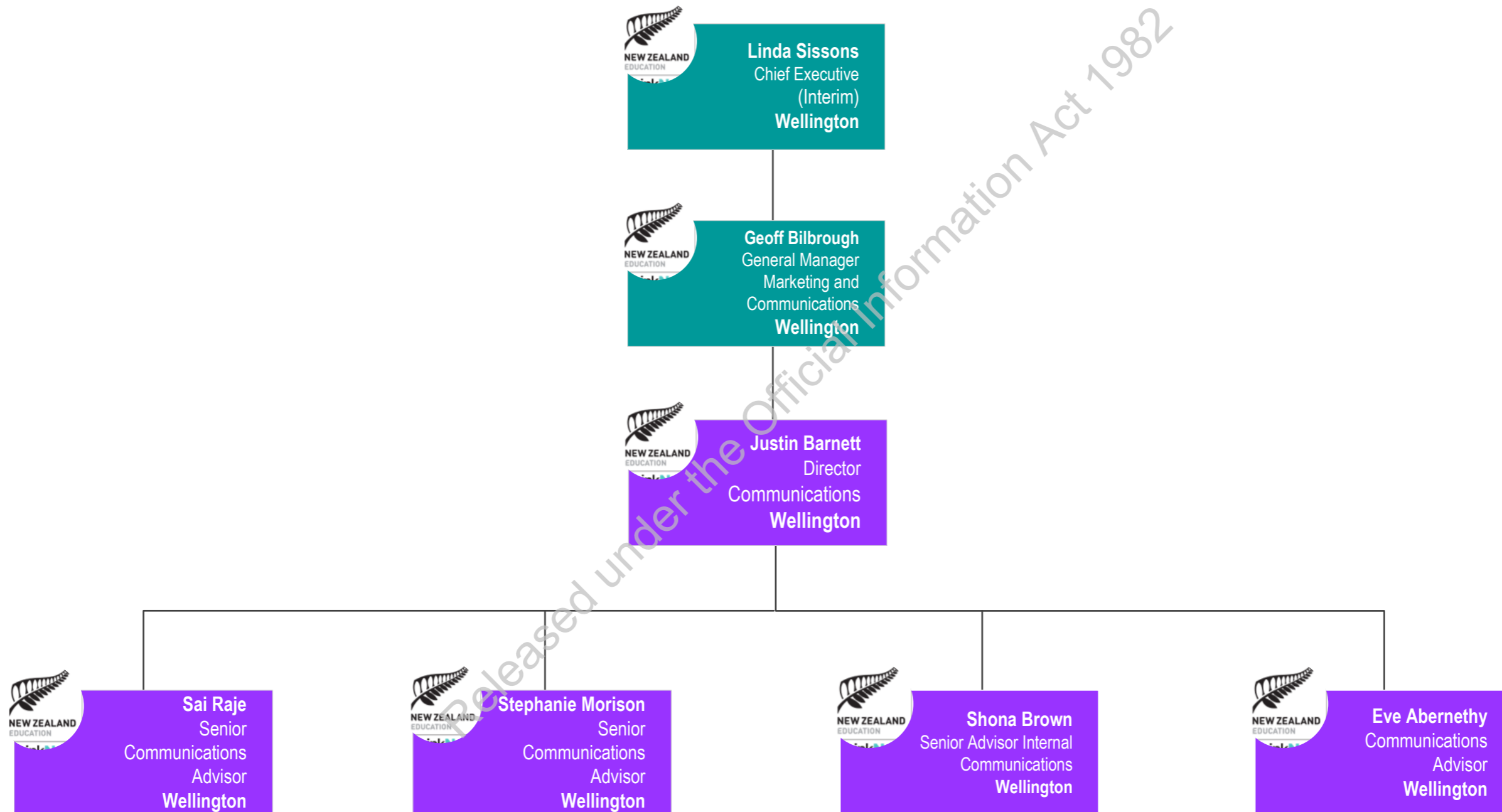


EDUCATION NEW ZEALAND MANAPOU KI TE AO ORGANISATION CHART

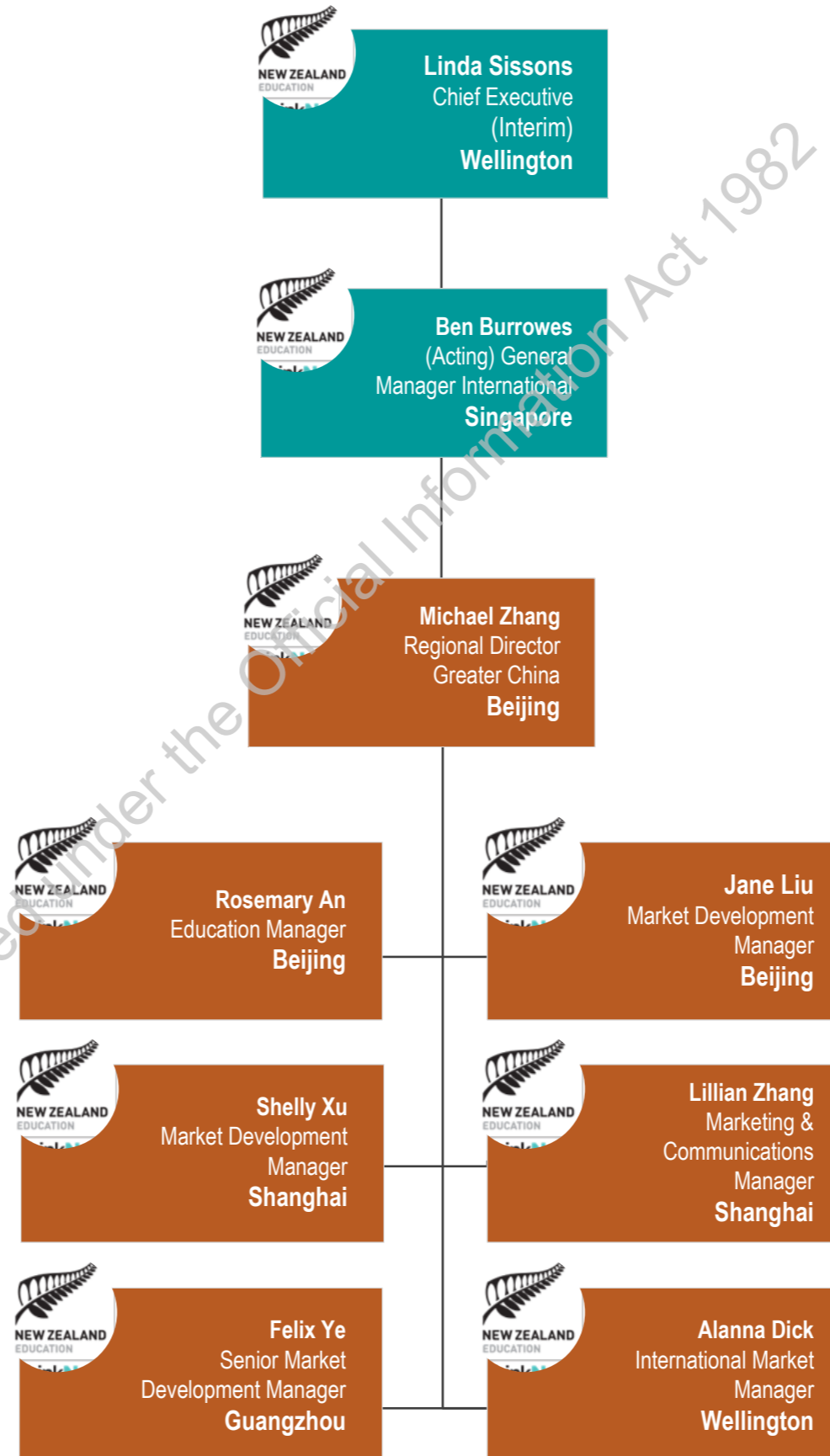
Marketing and Communications 1/2



Marketing and Communications 2/2

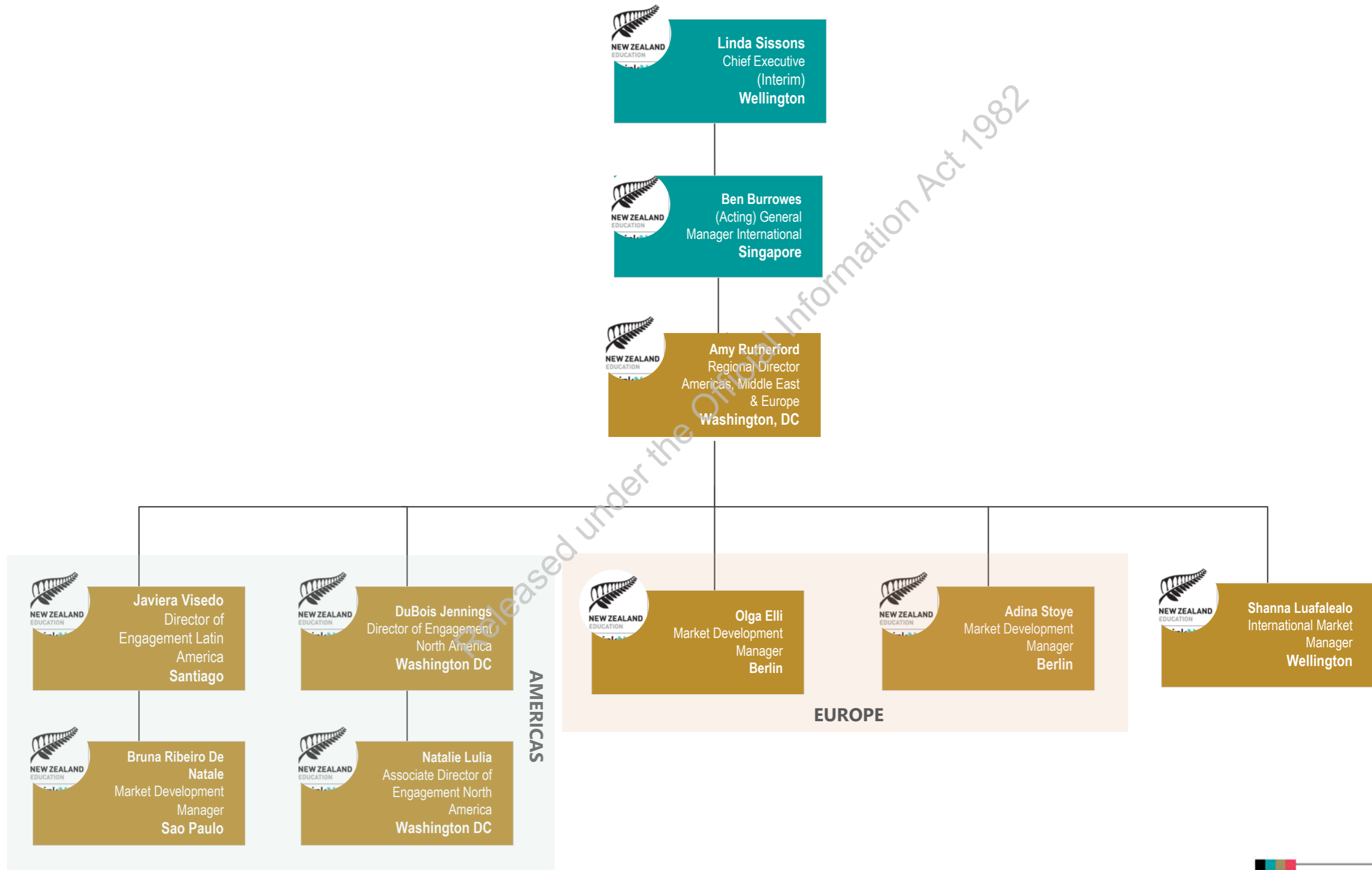


International 1/3



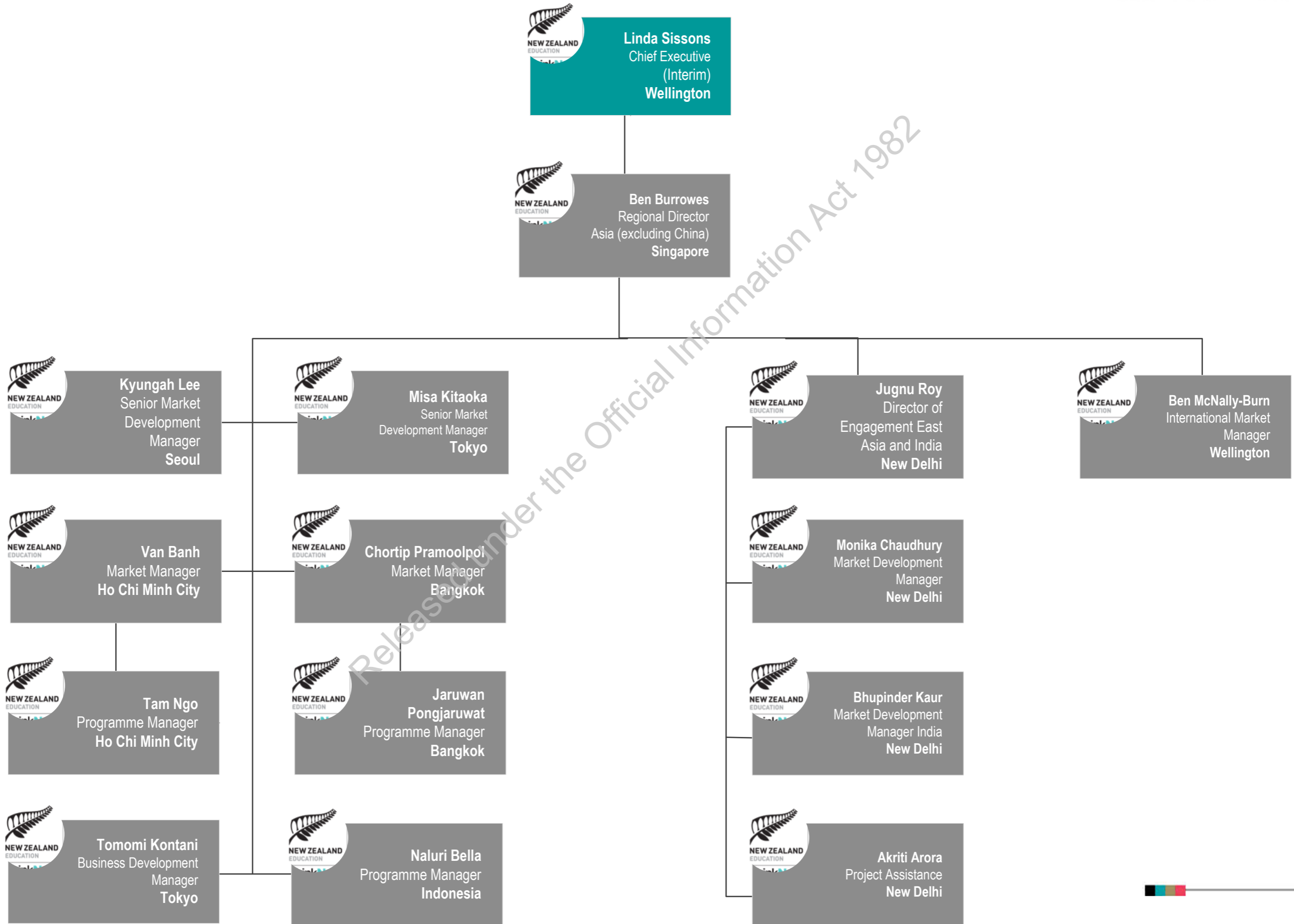
Released under the Official Information Act 1982

Americas, Middle East and Europe



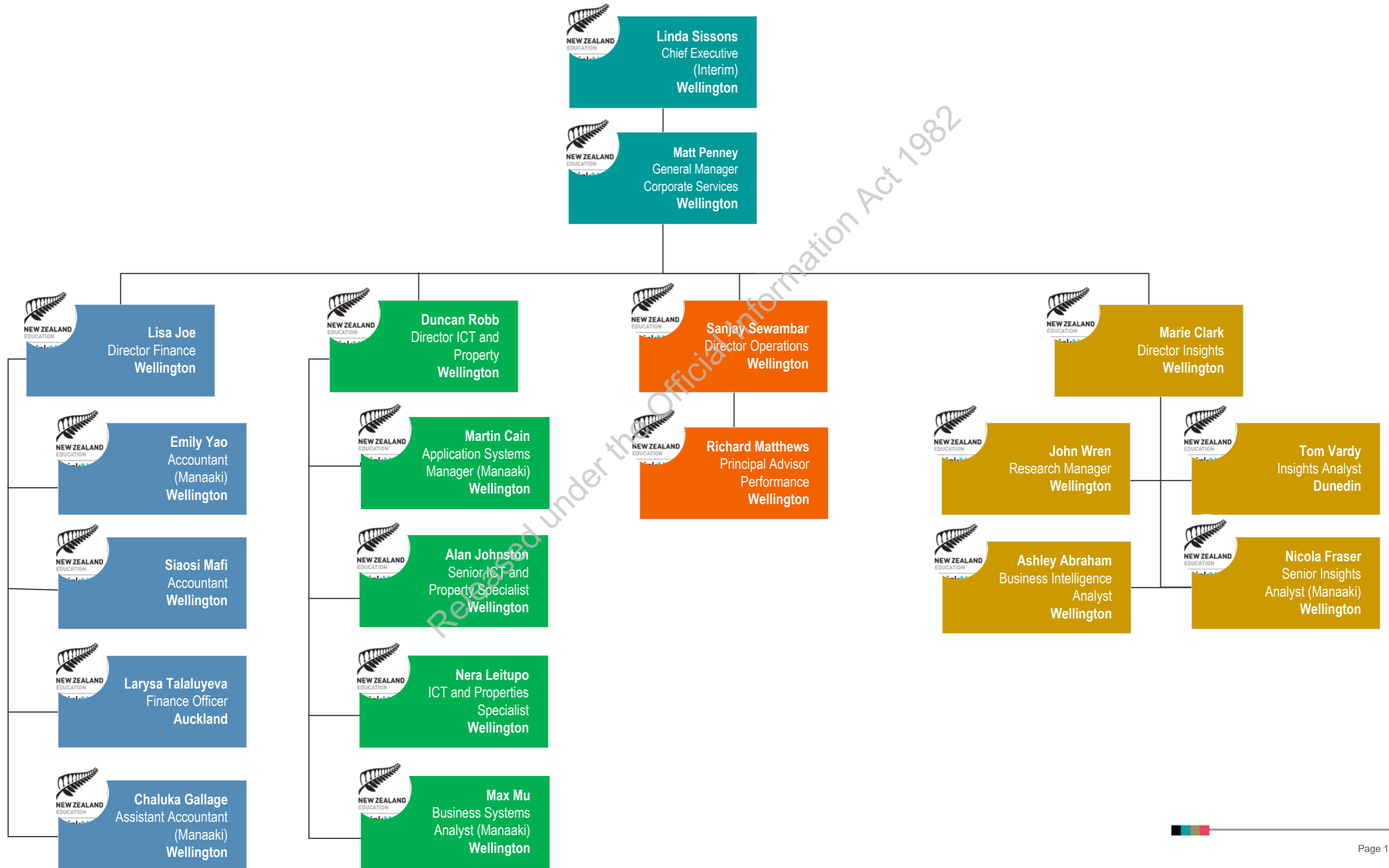
EDUCATION NEW ZEALAND MANAPOU KI TE AO ORGANISATION CHART

Asia (excluding China)

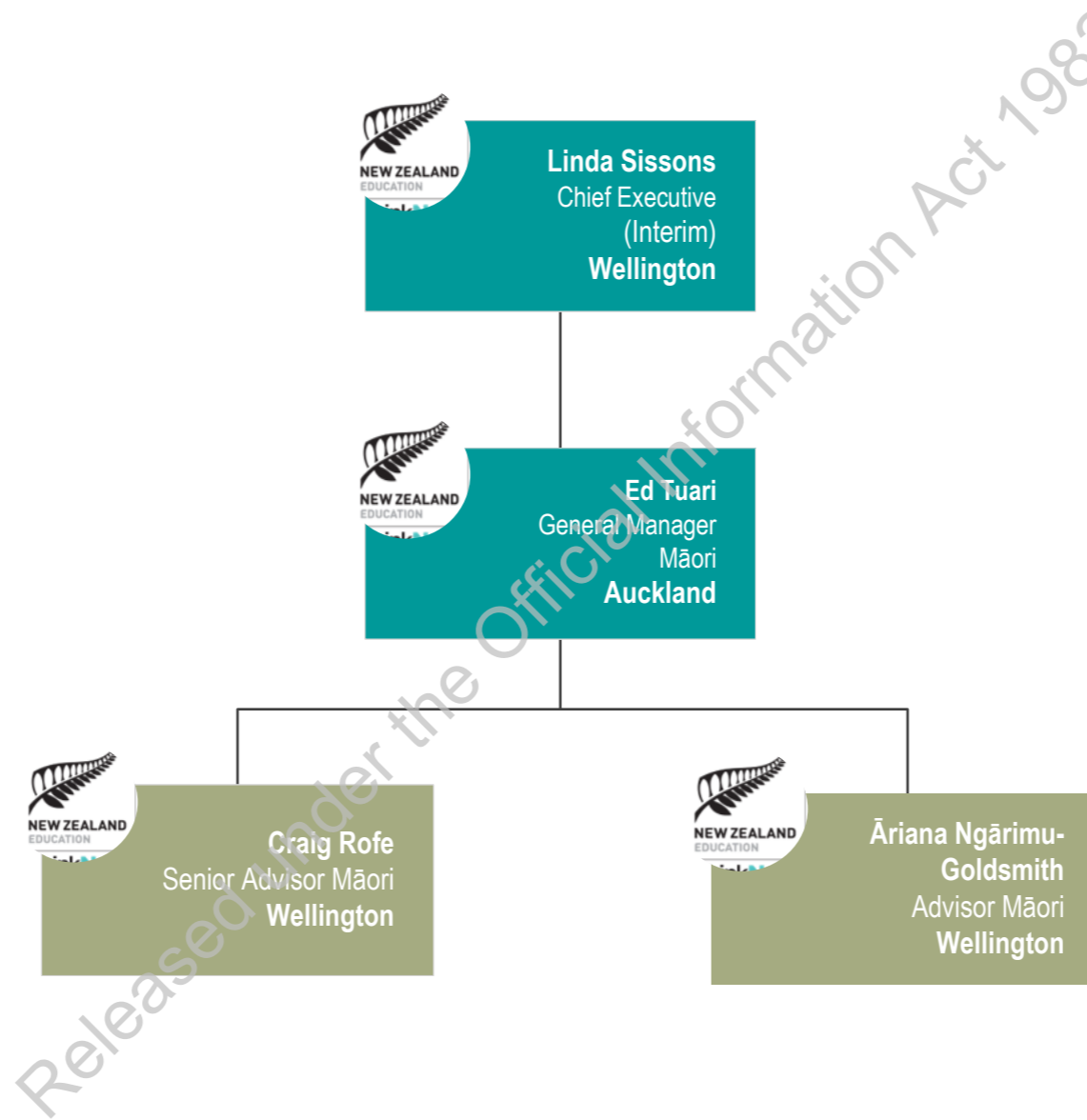


EDUCATION NEW ZEALAND MANAPOU KI TE AO ORGANISATION CHART

Corporate Services



Rautaki Māori



People Culture and Capability

