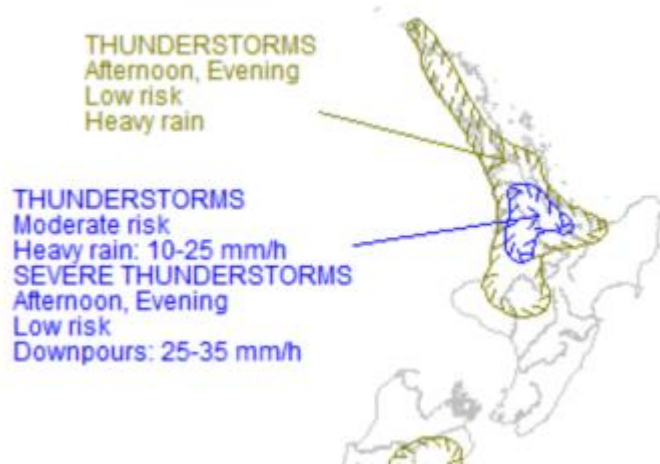


# 22/11/2023 - E +39 SITREPS

As at 1.33pm on 22/11/2023 prepared by Crispian [REDACTED] approved by Anusha Guler

<b>Distributed to</b>	All GEDT/ELT members
<b>Key Contacts</b>	Anusha Guler and Crispian [REDACTED]
<b>Previous ELT SITREP</b>	<a href="#">E+38 SITREPS 11 21112023 - DRAFT .docx</a>
<b>Overview</b>	<p><b>Summary of the current event</b></p> <ul style="list-style-type: none"> <li>Port Waikato by-election – overseas voting and advanced voting have commenced.</li> <li>Preparation for election day</li> </ul>
<b>Key date:</b>	<b>Number of days to election day – 3 days (25 Nov)</b>
<b>Port Waikato by-election</b>	<p><b>Port Waikato by-election</b></p> <ul style="list-style-type: none"> <li>Number of advanced votes have dropped this week.</li> <li>All supplies have been packed and managers will start collecting from today onwards</li> <li>On track for Saturday.</li> </ul> <p><b>Overseas Operations (apology from John)</b></p> <ul style="list-style-type: none"> <li>To date: Downloaded Voting Papers = 83. Uploaded Voting Papers = 41</li> <li>OVP Vote = 1</li> <li>Remote Vote = 1</li> <li>Dictation Registration = 1. Dictation Vote = 1.</li> <li>eLearning Support = 14</li> </ul>
<b>IT</b>	<p><b>GENERAL UPDATE:</b></p> <ul style="list-style-type: none"> <li>General Election - EMS Release which included several changes to support delivery of E9 on 27/11/23 was successfully delivered on 21/11/23.</li> <li>General Election – Final QA of the E9 has highlighted a mismatch of 0.01% of 11 of 17 Party vote percentages, reported in 3 - E9 reports (1.1, 3.1 and 4.2) versus the official results website. Risk assessment and impact analysis underway, to inform the decision on the way forward.</li> <li>IVR – All 13 Hunt group phones are now working after configuration changes by One.NZ. All tested in the HQ.</li> </ul>
<b>Comms &amp; education</b>	<p><b>GENERAL UPDATE:</b></p> <ul style="list-style-type: none"> <li>No issues to report.</li> <li>Media release to be going out today – “Vote Now”, “Time is running out”.</li> <li>Media advisory guidance on what candidates and parties can or can’t do on election day.</li> <li>Media notice in local papers on updated list of voting places.</li> </ul>
<b>Severe Weather Outlook (Wed 22 Nov – Sat 25 Nov)</b>	A strong southerly flow may reach gale thresholds from Friday through to Sunday morning, impacting Central and northern New Zealand A slow moving low is also forecast to form northeast of the North Island, likely to bring periods of heavy rain to eastern regions of the North Island. There is moderate confidence of warning amounts of rain for northern Hawke's Bay to southern Gisborne from Friday onwards and weather warnings may be issued in these areas.

There is a moderate risk of thunderstorms about inland Bay of Plenty and Rotorua (particularly near the ranges), Waikato and Waitomo this afternoon and evening, with a low risk covering other areas of the North Island. If thunderstorms do occur, they are likely to produce localised heavy rain, mainly in the 10-25mm/h range.



### 2023 Port Waikato By-Election Actuals vs. Estimates

[Dashboard Help](#)

Totals are Through 20/11/2023

Detail Level: 
 Vote Type: 
 Only Show Actuals Higher Than Estimates: 
 Data Through:

#### Ordinary Votes on a Voting Place Level

