

17/10/2023 - E+3 SITREPS

As at 2.59pm on 17/10/2023 prepared by Crispian [REDACTED] approved by Anusha Guler

Distributed to	All GEDT/ELT members
Key Contacts	Anusha Guler and Crispian [REDACTED]
Previous ELT SITREP	E+2 SITREPS 6 16102023 - FINAL.docx
Overview	<p>Summary of the current event</p> <ul style="list-style-type: none">• Post election process underway.• Focus on processing enrolment forms, overseas votes and special votes.• Repatriation of materials to headquarters.• Processing of Ordinary and Special Votes.• Dealing with scrutineers for official count.
Voting Services	<p>GENERAL UPDATE</p> <p>Overseas Operations</p> <ul style="list-style-type: none">• No issues to report.• Initial processing of uploaded voting papers almost completed.• Shipments of voting papers have been received from 26 Overseas Voting Places. <p>Auckland North Region</p> <ul style="list-style-type: none">• Electorates are at different post-election phases. No concerns to meet official count dateline.• Lots of activity, official counts have started, electoral rolls are being scanned, the final enrolment forms are being uploaded.• Shared Ordinary and Special Votes (SV) have started to be repatriated to the respective electorates.• Several Te Atatu takeaway votes have been found by the enrolment team; they are being, “signature required”, couriered to the HQ.• Regional Manager to meet with a difficult scrutineer at the Whangaparaoa HQ. <p>Auckland South Region</p> <ul style="list-style-type: none">• Payroll will be delayed for Mangere electorate as the Rostering and Recruitment Manager needs some guidance on the process. Assistance is being provided on this.• All electorates working through uploading enrolment forms, sorting and distributing Special Votes (SV), scanning rolls, preparing for count and repatriating shared votes. <p>Central North Island Region</p> <ul style="list-style-type: none">• Payroll signed off by today.• A few enrolment forms to complete scanning today.• All electorates have begun their official count except for Hamilton East which starts at 2.00pm.• Difficulty with scrutineers with early counts caused the delay for Hamilton East.• Repatriation (excluding specials) will be completed by today.• Working closely with Electorate Managers to meet their dateline for the official count.• Aim is not to have staff work on the long weekend. <p>Lower North Island Region</p> <ul style="list-style-type: none">• Payroll issue at Hutt South.• Wairarapa electorate didn't complete their input of Special Votes, working with Voting Services to action this.• Otaki electorate requested a late start for the official count due to staff fatigue.• No staff will be working on the long weekend unless they are behind in their process.

	<p>South Island Region</p> <ul style="list-style-type: none"> All is going as planned for official count. No staff will be working on the long weekend. Staff are making mistakes due to fatigue; the long rest will increase efficiency. Starting to plan for closing headquarters. 1 scrutineer for official count. There was to be a scrutineer for Nelson but not sure this person has turned up. <p>Voting Services:</p> <ul style="list-style-type: none"> On the official count and secrecy - scrutineers will need to still sign a secrecy declaration but when it comes to the official count it won't be an offence if they leak this information. EC has dealt with this previously through a polite request and communications to parties asking them not to publicise it. Voting Services and Security will provide scrutineer forms and guidelines to Enrolment for their information.
Enrolment	<p>GENERAL UPDATE:</p> <ul style="list-style-type: none"> 169,513 enrolment forms to process, as at 8am this morning. Of those, 22,000 are online and the remainder are paper forms. The team keyed more than 23,000 forms yesterday. We have now surpassed 3.6m electors enrolled. <p>ACTION</p> <ol style="list-style-type: none"> Voting Services (VS) to let Enrolment team via Ross know when electorate HQs have scanned in all enrolment forms. Enrolment needs to know when forms are no longer coming in, to understand the totality of what we are dealing with.
IT	<p>GENERAL UPDATE:</p> <ul style="list-style-type: none"> Nothing to report.
Comms & Education	<p>GENERAL UPDATE (apology)</p> <ul style="list-style-type: none"> Nothing to report.
Customer Services	<p>GENERAL UPDATE:</p> <ul style="list-style-type: none"> Since yesterday, the team resolved 243 tickets, received 63 phone calls and made 7 outbound calls. 90% of tickets were resolved in one-touch. Telnet received 172 calls and 20 emails. The team has been working on the enquiries received since 7pm on Saturday. Some longer calls and emails received from voters who had strong feedback on their voting experience. These included wait time at voting places, staff behaviour, incorrect Ballot Papers, no voting papers, takeaway votes not being collected, and no EasyVote card etc. Other sentiments were about the electoral process, Māori Disenfranchisement and missing the ability to enrol by cut-off. 212 complaints are on hand across the business units.
Legal & Policy	<p>GENERAL UPDATE</p> <ul style="list-style-type: none"> No major updates. Working through 200+ election day rules issues and breaches, then focus moves to dual votes. 3 people on the corrupt practice list were able to enroll and subsequently vote. Working with Enrolment and VS to remove them from the roll and withdraw their votes.
Strategic Engagement and Partnership	<p>GENERAL UPDATE</p> <ul style="list-style-type: none"> Nothing to update.
Interagency Update	<p>MoJ Port Waikato By-election</p> <p>Cabinet authorised the submission to the Executive Council of the Electoral Order 2023; and approved funding for the by-election.</p>
Security	<p>GENERAL UPDATE</p> <ul style="list-style-type: none"> No significant issues

	<ul style="list-style-type: none">• Security guards will be reduced to planned after-hours presence only from tonight <p>ACTION</p> <p>Security will be sending out an email regarding the reduced presence of security at headquarters as they start their shifts from 6pm onwards.</p>
People & Culture	<p>GENERAL UPDATE (apology)</p> <ul style="list-style-type: none">• Nothing to update – focus on payroll.



DAILY INTERAGENCY REPORT TO GEDT

Submitted daily not later than 11am.

Date: 17 October 2023

DPMC:

NSTR

NZ Police:

NSTR

NEMA (Daily Intelligence Briefing attached):

See daily report

GCSB:

NSTR

NZSIS:

Reporting via the JIG

MoH:

NSTR

IN-CONFIDENCE

Waka Kotahi:

<https://www.journeys.nzta.govt.nz/highway-conditions/traffic-and-travel-list-view/>

NSTR

MFAT:

NSTR

MoJ:

Cabinet authorised the submission to the Executive Council of the Electoral (Port Waikato By-election) Order 2023 [PCO25890/15.0] (the Order); and approved funding for the by-election.

FENZ:

NSTR

MPI:

NSTR

MBIE:

NSTR

Prepared by: David [REDACTED]

IN-CONFIDENCE



Issued: 1030hrs 17 Oct 2023

Authorised by: [REDACTED] – Watch Leader

Next update: 1030hrs 18 Oct 2023

Executive Summary

- Power restoration continues throughout the Canterbury region following the severe winds on Saturday.
- Warnings and watches for heavy rain and strong wind are in force for lower North Island and upper parts of South Island.

NEMA Operational Status

Operational Activity

- NCC is at Mode 1 (MAR Centre Monitoring).

On-Call Roster

Director	[REDACTED]
National Controller	[REDACTED]
PIM	[REDACTED]
REMA North	[REDACTED]
REMA South	[REDACTED]

Holiday On-Call Roster

Controller	[REDACTED]
Operations	[REDACTED]
Intelligence	[REDACTED]
Logistics	[REDACTED]
Planning	[REDACTED]

Response Activity

Canterbury Severe Winds

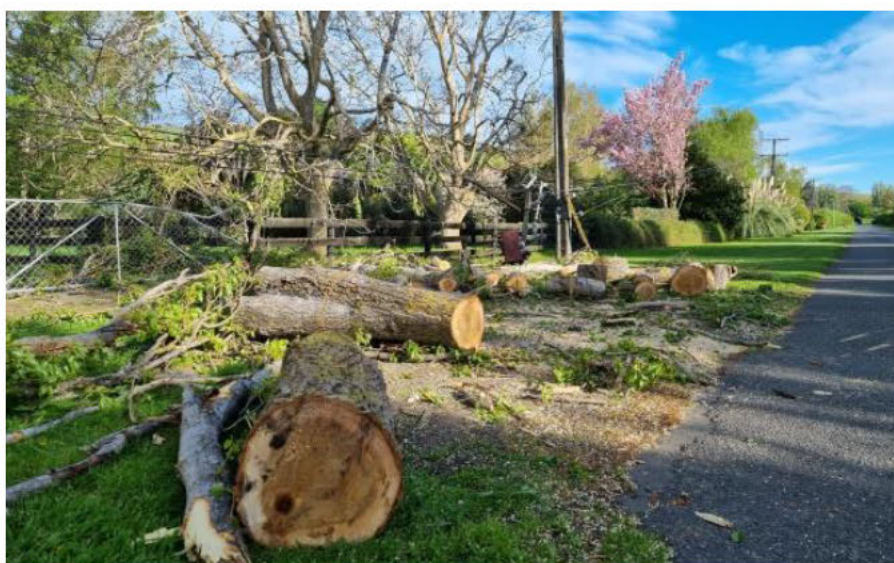
Power restoration continues throughout the Canterbury region following the severe winds on Saturday. At the peak of the event, approximately 26,000 customers were without power, while yesterday evening approximately 1,000 customers remain without power. Cellular coverage is nearly fully restored with only 3 cellular towers non-operational.

Waimakariri District Council Emergency Operation Centre (EOC) activated on Sunday in response to the prolonged power and communications outages. As of yesterday, this was stood down and the response managed as BAU.

Throughout this event the National Coordination Centre remained at Mode 1 – MAR Centre Monitoring. This is the last the MAR Centre will report on this event unless there is significant escalation.



Hagley Park - [NZ Herald](#)



Damaged power lines, Halswell - [Otago Daily Times](#)

Weather and Climate

Current Weather

A complex trough of low pressure, preceded by a strong northwest flow, lies over central New Zealand today. Cold southerlies should move north over the South Island today bringing snow as low as 700 meters in Canterbury. Strong winds and heavy rain associated with these features will affect central parts of New Zealand.

Orange heavy rain warnings

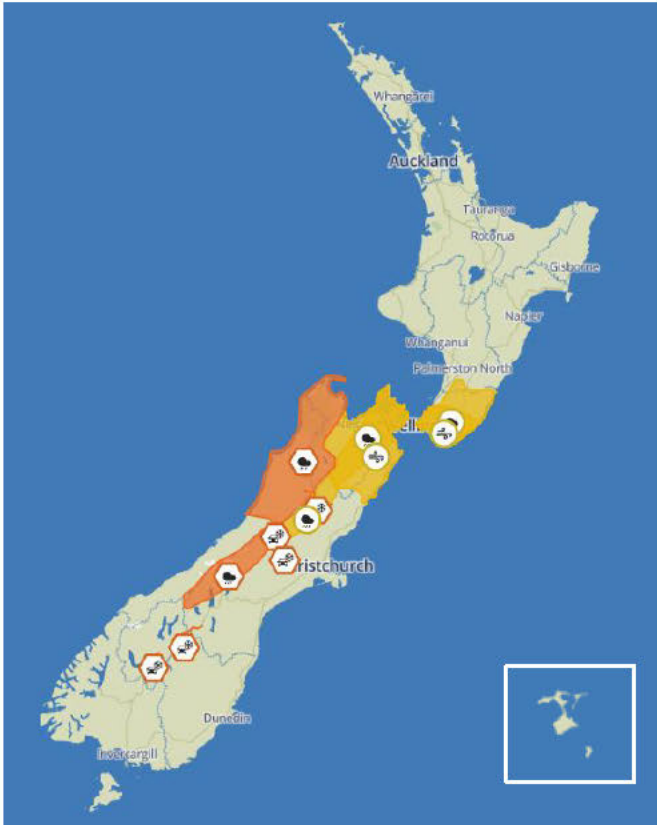
- Tasman, Nelson Lakes, Buller, Grey Districts until 1300hrs today.
- Headwaters of the Canterbury Lakes and Rivers south of Arthur's Pass until 1200hrs tomorrow.

Heavy rain watches

- Wellington and Wairarapa until 2100hrs tonight.
- Marlborough and Tasman until 1800hrs tonight.
- Headwaters of the Canterbury lakes and rivers north of Arthur's Pass until 1400hrs this afternoon.

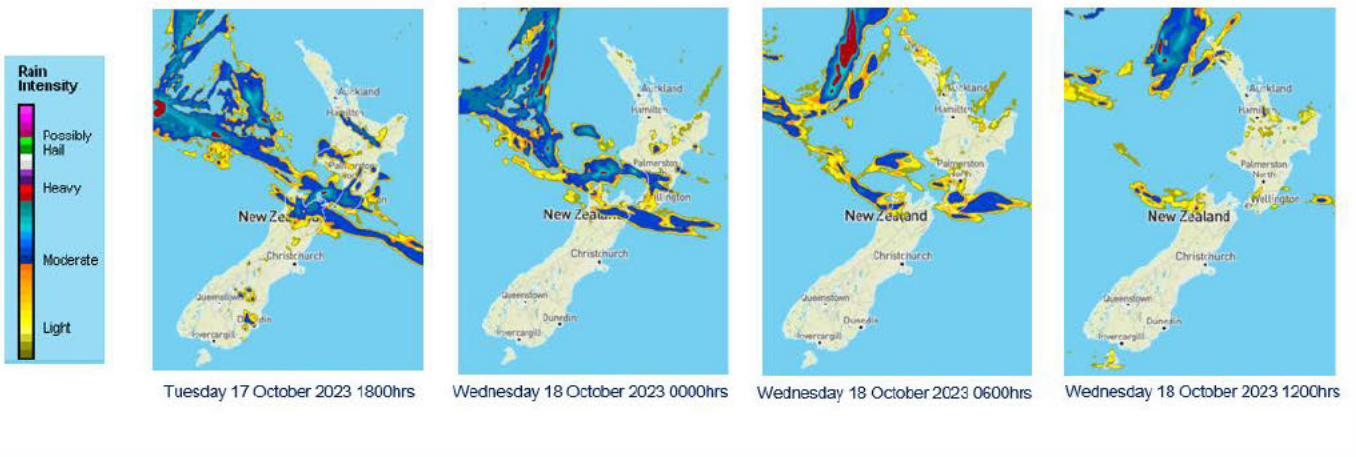
Strong wind watches

- Wairarapa and Wellington until 1100hrs today.



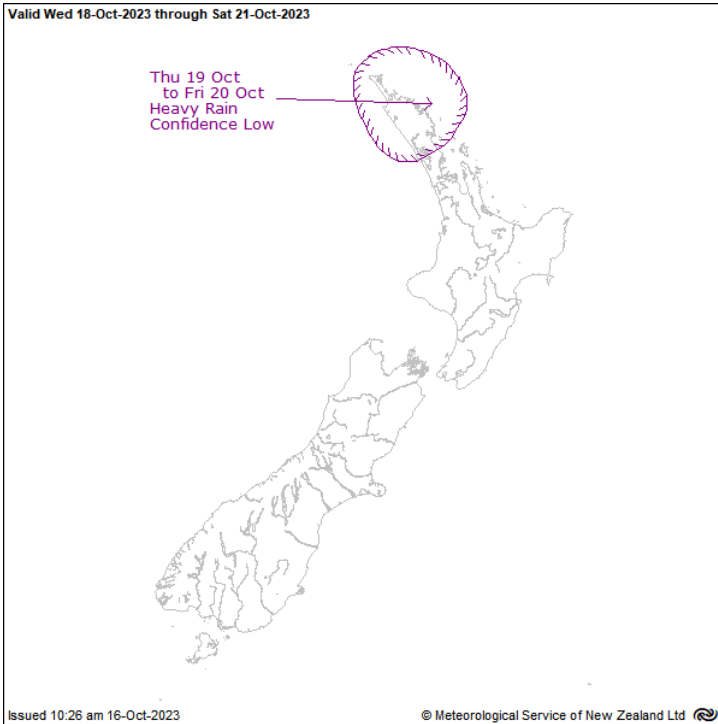
Accurate from MetService as at 1000hrs today.

METSERVICE – MODELLED FORECAST FIELDS – RAIN



Severe Weather Outlook

A persistent ridge of high pressure lies over central New Zealand through the rest of the week and a trough brings a moist northeast flow to Northland during Thursday and Friday, with periods of rain.



Thunderstorm Outlook

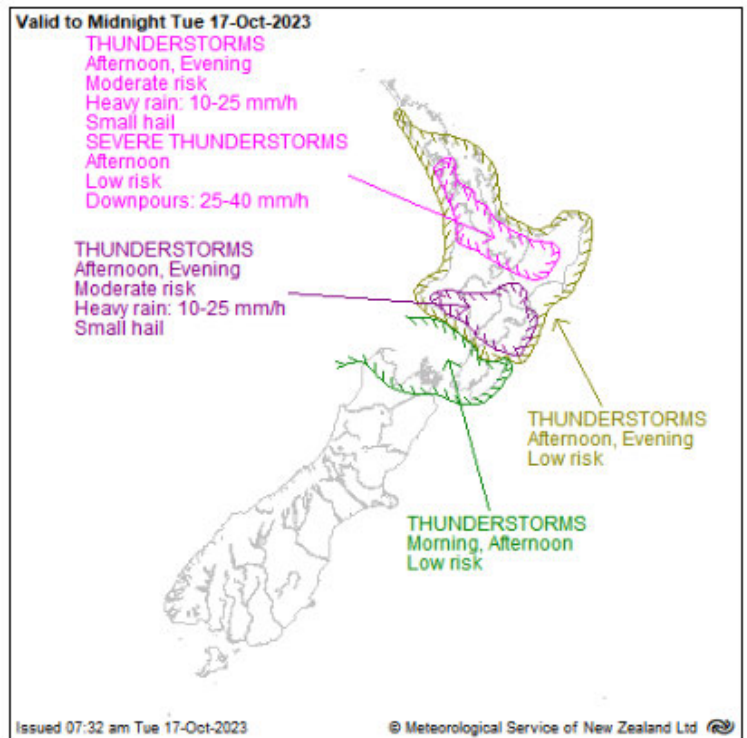
A unstable northwest flow covers the North Island and northern South Island today.

There is a low risk of thunderstorms for northern parts of Nelson Tasman and Marlborough, Horowhenua to Wellington, and Wairarapa until late afternoon.

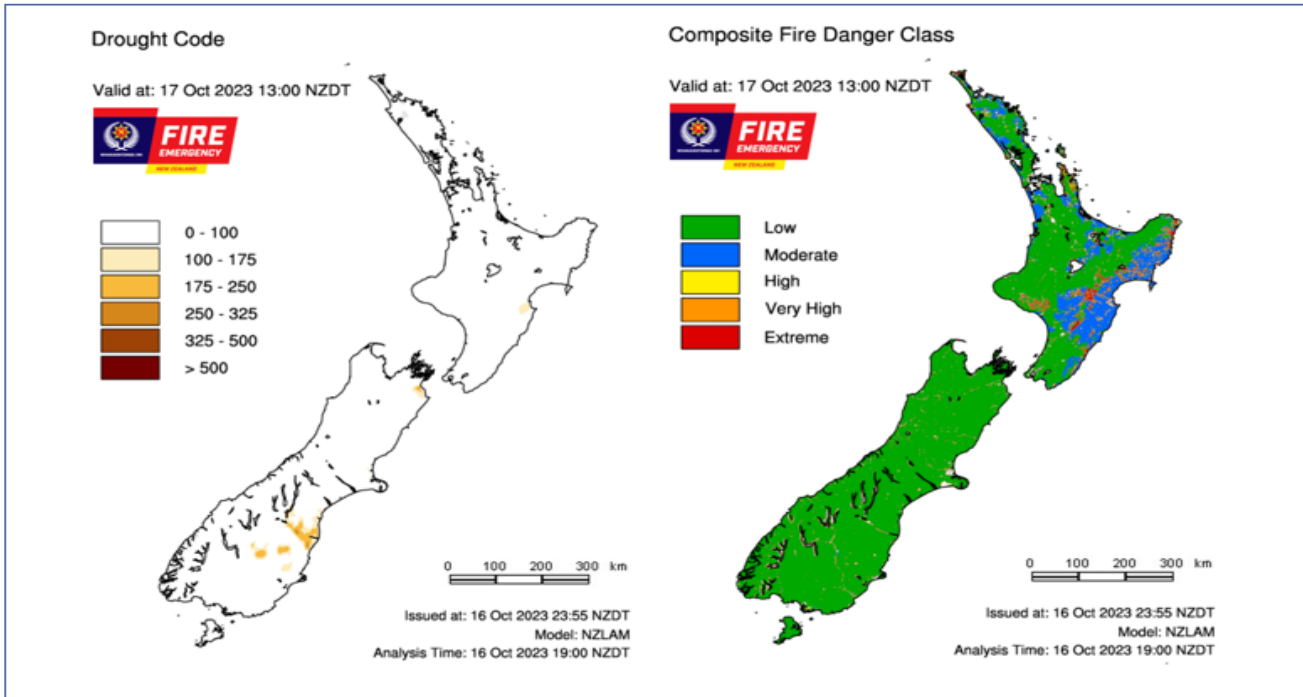
Over the remainder of the North Island, daytime heating and wind convergence are expected to cause shower activity to increase for a time in many places. There is a low risk of thunderstorms for most of the North Island this afternoon and evening, as drawn on the chart.

However, for Auckland, Waikato, northern Taupo, Bay of Plenty, the ranges of Tariāwhiti, South Taranaki, Whanganui, Taihape, Manawatu, the Tararua District, and much of Hawke's Bay, the risk is considered moderate during this time.

Any thunderstorms that occur will likely be accompanied by heavy rain with intensities of 10 to 25 mm/h, and small hail. However, from Waikato across to Bay of Plenty, including Rotorua, there is a low risk that slow-moving thunderstorms could become SEVERE and produce localised downpours with intensities of 25 to 40 mm/h.



Fire and Drought Risk



Source: [NIWA Fire Weather](#)

Geological

Volcanic Activity (Level 1 and above)

Volcano	Level	Volcanic Activity	Aviation Code
Whakaari/ White Island	2	Moderate to heightened volcanic unrest	Yellow
Ruapehu	1	Minor volcanic unrest	Green

GNS Alert Levels guide visit: <https://www.geonet.org.nz/about/volcano/va/>

GNS Aviation Colour Codes visit: <https://www.geonet.org.nz/volcano/acc>

Other Events

Nothing to report.

Media

Katikati’s new emergency shelter gets the nod

The project — which was initiated by Rotary Club of Katikati — and community response plan was fast-tracked after Western Bay flooding this year, says project chairman John Bothwell.

NZ Herald

Hunga Tonga-Hunga Ha’apai volcano ash causing power outages in Tonga – utility provider

Tonga’s main island of Tongatapu has been experiencing power outages caused by corrosive ash created by last year’s Hunga Tonga-Hunga Ha’apai volcanic eruption.

RNZ