

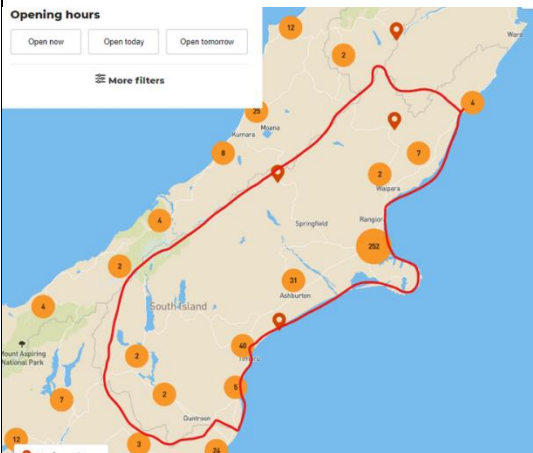
# 14/10/2023–ELECTION DAY

As at 8.00am (verbal) and 1.00pm on 14/10/2023 prepared by Crispian [REDACTED]

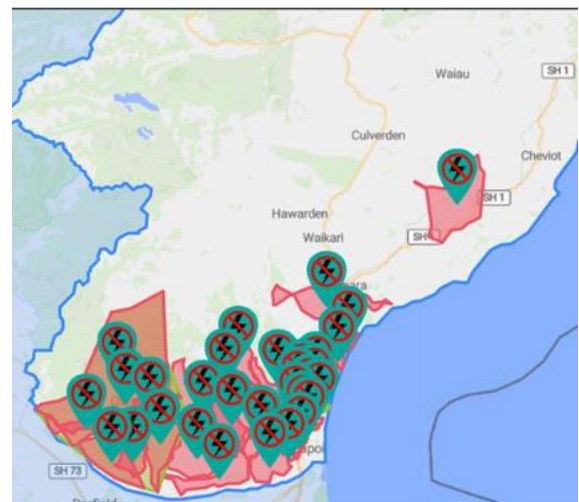
<b>Distributed to</b>	All GEDT/ELT members
<b>Key Contacts</b>	Anusha Guler and Crispian [REDACTED]
<b>Previous ELT SITREP</b>	<a href="#">3 ELT Standup SITREPS 5 13102023 - FINAL.docx</a>
<b>Overview</b>	<p><b>Summary of the current event</b></p> <ul style="list-style-type: none"> <li>ELECTION DAY</li> <li>eRoll issues</li> <li>Red weather warning for Canterbury</li> <li>1pm updates are in light blue.</li> </ul>
<b>Voting Services</b>	<p><b>GENERAL UPDATE</b></p> <p><b>Overseas Operations</b></p> <ul style="list-style-type: none"> <li>Four Overseas Voting Place left to close, they will all be closed by 1500 today.</li> <li>Over 93,000 Overseas Votes have been issued, with over 66,000 Overseas Votes received.</li> <li>Dictation Registrations closed at 742, with 701 Votes Issued. Dictation Voting closes at 1900.</li> </ul> <p><b>Auckland North Region</b></p> <ul style="list-style-type: none"> <li>Advance Votes were safely transported and secured at Head Quarters.</li> <li>Large amounts of ordinary counts.</li> <li>Long queues at voting places, prior to the issue with E-roll. Re-allocating staff to these places.</li> <li>[REDACTED] 6(C) [REDACTED]</li> <li>Democracy NZ scrutineers (representative of Integrity Project) are a concern and will be a greater concern at the 7pm timeline. Escalation process to be utilised if any issues occur. There are 4 scrutineers at Headquarters.</li> <li>Allied guard not turned up at one voting place.</li> </ul> <p><b>Auckland South Region</b></p> <ul style="list-style-type: none"> <li>An additional Mobile Team will be working at Middlemore Hospital, as per request. The team will be there from 9am - 4pm.</li> <li>Some political party billboards have not been removed.</li> <li>Not many queues at the malls.</li> <li>Preliminary counts are progressing well.</li> <li>At the Botany electorate, the Logistics &amp; Supplies Manager was stressed and left. Back-up person to cover this evening.</li> </ul> <p><b>Central North Island Region</b></p> <ul style="list-style-type: none"> <li>Final Advance Voting Place closed at 8pm, packed up to headquarters.</li> <li>No staffing issues at the moment.</li> <li>Police being called to a Rotorua voting place. A member of the public became agitated due to the queue and became aggressive. Awaiting on more information, including to whom he directed his agitation and if our staff were affected. No issues with staff.</li> <li>Queues is an issue across high profile voting places e.g malls.</li> </ul> <p><b>Lower North Island Region</b></p> <ul style="list-style-type: none"> <li>Minor staff issues.</li> <li>Managing an issue regarding an agreed opening time at 9am for a Voting Place instead of 10am.</li> </ul> <p><b>South Island Region</b></p> <ul style="list-style-type: none"> <li>The night shift guard was not on site at 6.45am but his belonging was on-site. Contacted Allied to get a</li> </ul>

response. The next guard arrived 8am.

- One of the Voting Place Manager was in hospital and was replaced with another manager.
- Met Service has issued a red wind warning for Canterbury; Waimate in the south to Hanmer in the north, until 5pm today. Civil Emergency Management (CEM) have advised they have never issued a red warning for Canterbury before. They are expecting trees down, power outages and closed roads. Winds have certainly become very strong here in Christchurch in the last half hour.
- Regional Manager has advised all 10 electorates in the affected area to warn their staff, especially their drivers, to take safe shelter away from trees and powerlines or not go out if they feel at all concerned.
- 3 x Voting Places without power - West Eyreton School Hall and Tuahiwi in Waimakariri electorate and Tai Tapu School in Selwyn electorate. These Voting Places are **opened**, but without power.
- Adventure Bike Park voting place has closed; and removed from the website. Staff reallocated to other Voting Places. There will be communication on our website to notify voters.
- Some voters have requested take away votes due to the weather conditions.
- There are more scrutineers than expected. and they are slowing down the counts with asking plenty of questions due to lack of understanding of the process and wanting to write all the results down.
- Leithfield School Hall, Sefton, Balcain Community Centre and the hub in Amberley have all lost power (this is in the Kaikoura electorate) and Cust Community Centre (Waimakariri electorate). These Voting Places are still **open**. Arranging a generator for Amberley.
- **Closed** Tihiraki North Loburn School in North Canterbury area (2.30pm), (Kaikoura electorate) due to two fallen trees blocking access, and a burst water tank causing flooding. The staff are currently unable to leave due to the blocked access. The nearest voting place is Loburn School Te Kura Aromauta 4.7km away. Ballot boxes will be transported to Loburn School Te Kura Aromauta.
- Waipara school has had to evacuate due to powerlines being down. Voting Place is **closed (3.28pm)**. Ballots are being transferred to Amberley Library.



Power Outages Rangiora and North Canterbury



**Voting Services:**

- eRoll issue - Staff have been advised to revert to their manual processes.
- Voting services team to expedite entering the Mobile Team to Middlemore Hospital into EMS.
- Security Guards join at the end of any queues at 7pm to stop late voters after the cut-off time.

**Enrolment**

**GENERAL UPDATE:**

- No major issue.
- 56K forms in queue.
- Overnight we received 9,000 online enrolments. It appears 3,000-4,000 of those may have come in between 6am and 8am this morning. Large percentage of those will be overseas enrolments. Note that *enrolments for overseas electors closed at midnight Friday 13 October* (the legislative change to allow for enrolment on Election Day does not apply to overseas voters. May lead to problems for some overseas voters wanting to download voting papers today.

	<ul style="list-style-type: none"> <li>• Checking-in with staff safety at Christchurch regarding the weather warning.</li> </ul>
<b>IT</b>	<p><b>GENERAL UPDATE:</b></p> <ul style="list-style-type: none"> <li>• All tasks completed at 11.30pm for Election Day preparation.</li> <li>• IT support and security are here on-site from 7am onwards.</li> <li>• eRoll server issues started around 10:05 and are continuing as at 12:05. Increasing capacity has not solved the issue IT are continuing to investigate with Catalyst with Catalyst.</li> <li>• eRoll issues <b>NOT RESOLVED</b>. (1.18pm).</li> <li>• eRoll issues has no impact on the count or release of results tonight.</li> <li>• eRoll performing well at the moment, processing full load. (1.59pm)</li> </ul>
<b>Comms &amp; Education</b>	<p><b>GENERAL UPDATE:</b></p> <ul style="list-style-type: none"> <li>• Very active overnight social media comments - 529 comments</li> <li>• [REDACTED]</li> <li>• [REDACTED] 6(c) [REDACTED]</li> <li>• Few complaints re queue at Voting Places, due to eRoll holding process up.</li> <li>• Website visits– 240k up from 100k daily visits in the past week.</li> <li>• Brief media statement to go out on the eRoll issue and on long queues at voting places and the ability to vote if you are in the queue before 7pm.</li> <li>• Political parties (and scrutineers) have raised the eRoll issue with the EC.</li> <li>• Social Media comment regarding Richmond school, ran out of ballot papers. 20 people were turned away.</li> </ul>
<b>Customer Services</b>	<p><b>GENERAL UPDATE:</b></p> <ul style="list-style-type: none"> <li>• Around 1800 requests were received this morning, top enquiries were about How to Vote, Where to Vote and Unable to get to a Voting Place. The majority of the contacts were triggered by Word of Mouth, Brochure and our website.</li> <li>• We are starting to receive phone calls from Christchurch as a Metservices alert has been issued for strong winds advising not to drive and not leave the house. We are following 'What if I can't get to a voting place' response.</li> <li>• Since yesterday, the team resolved 767 tickets, received 203 phone calls and made 19 outbound calls. 87% of tickets were resolved in one-touch. Telnet received 3,001 calls and 169 emails.</li> <li>• More than 70,000 requests received since the campaign started.</li> </ul>
<b>Legal &amp; Policy</b>	<p><b>GENERAL UPDATE</b></p> <ul style="list-style-type: none"> <li>• Distressing X post. Managing social media and various news apps displaying political candidate advertisements. All under control. Escalation to Meta to take posts down.</li> <li>• Provided clear guidelines for scrutineers to leave BY 7pm.</li> <li>• OIA request from Rob Salmon, Labour regarding ability for people waiting at long queues to be able to vote at 7pm.</li> </ul>
<b>Strategic Engagement and Partnership</b>	<p><b>GENERAL UPDATE</b></p> <ul style="list-style-type: none"> <li>• Nothing to report</li> </ul>
<b>Interagency Update</b>	<p><b>NEMA</b></p> <p>MetService contacted NEMA overnight to advise of an update of the wind warnings for the South Island. Canterbury Plains and Christchurch are now expected to reach wind speeds of 140km/h from 0400hrs this morning through to 1600hrs. Canterbury High Country are forecast to experience 150km/h gusts from midnight through to 1600hrs this afternoon. Winds are expected to be at damaging speeds for a short period but does have the potential to be significant. MetService also contacted Canterbury CDEM group directly to advise them.</p> <p>Wellington, Wairarapa, and Marlborough are expected to receive gales gusting up to 120km/hr in exposed places.</p> <p><b>NEMA Comment:</b> NEMA remains in a monitoring state with no reports to date to indicate impacts from the</p>

	weather. NEMA will advise the EC of any developments, if they occur.
<b>Security</b>	<p><b>GENERAL UPDATE</b></p> <ul style="list-style-type: none"> <li>• Protests on today. Info sent to relevant EM and RM.</li> <li>• Send out the scrutineer guidelines to all Regional and Electorate Managers.</li> <li>• Social media X post was escalated to the Police and Department of Internal Affairs.</li> </ul>
<b>People &amp; Culture</b>	<p><b>GENERAL UPDATE:</b></p> <ul style="list-style-type: none"> <li>• Regional Advisory Team in National Office. Some are out for a couple of hours to support voting place staff to take lunch breaks.</li> </ul>

**FOR YOUR INFORMATION**

**Severe Weather Outlook – Saturday 14 October**

**RED strong wind warnings Red strong wind warnings** are in place for the Canterbury plains, Christchurch, Banks Peninsula, and Canterbury high Country. The Canterbury region is expected to experience damaging gusts of up to 150km/h around the high country, and gusts of up to 140km/h in Christchurch and plains. Widespread winds are expected to gust consistently up to 130km/h. The high winds are expected to last through today, but ease towards the late evening.

East	0 Warnings/Watches	>
Lower	2 Warnings/Watches	>
<b>SOUTH ISLAND</b>		
Upper	2 Warnings/Watches	>
Central	6 Warnings/Watches	>
Lower	6 Warnings/Watches	>
<b>OTHER ISLANDS</b>		
Chatham Islands	0 Warnings/Watches	>



# DAILY INTERAGENCY REPORT TO GEDT

*Submitted daily not later than 11am.*

**Date: 14 October 2023**

**DPMC:**

NSTR

**NZ Police:**

No report yet

**NEMA (Daily Intelligence Briefing attached):**

MetService contacted NEMA overnight to advise of an update of the wind warnings for the South Island. Canterbury Plains and Christchurch are now expected to reach wind speeds of 140km/h from 0400hrs this morning through to 1600hrs. Canterbury High Country are forecast to experience 150km/h gusts from midnight through to 1600hrs this afternoon. Winds are expected to be at damaging speeds for a short period but does have the potential to be significant. MetService also contacted Canterbury CDEM group directly to advise them.

Wellington, Wairarapa, and Marlborough are expected to receive gales gusting up to 120km/hr in exposed places.

NEMA Comment: NEMA remains in a monitoring state with no reports to date to indicate impacts from the weather. NEMA will advise the EC of any developments, if they occur.

**GCSB:**

NSTR

**IN-CONFIDENCE**

**NZSIS:**

Reporting via the JIG

**MoH:**

NSTR

**Waka Kotahi:**

<https://www.journeys.nzta.govt.nz/highway-conditions/traffic-and-travel-list-view/>

NSTR

**MFAT:**

NSTR

**MoJ:**

NSTR

**FENZ:**

NSTR

**MPI:**

NSTR

**MBIE:**

NSTR

**IN-CONFIDENCE**

IN-CONFIDENCE

Prepared by: David [REDACTED]

IN-CONFIDENCE



Issued: 1050hrs 14 Oct 2023    Authorised by: [REDACTED] – Watch Leader    Next update: 1030hrs 15 Oct 2023

## Executive Summary

- MetService has issued RED strong wind warnings throughout Canterbury for today.
- Multiple heavy rain warnings and watches, as well as multiple strong wind warnings and watches are in force elsewhere throughout the country.

## NEMA Operational Status

### Operational Activity

- NCC is at Mode 1 (MAR Centre Monitoring).

### On-Call Roster

<b>Director</b>	[REDACTED]
<b>National Controller</b>	[REDACTED]

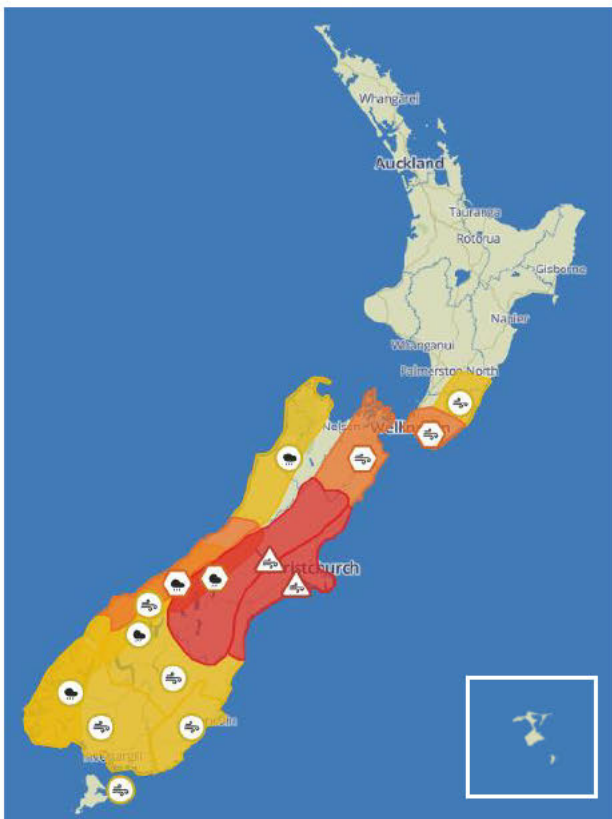
<b>Response Manager</b>	[REDACTED]
<b>Activation Coordinator</b>	[REDACTED]

<b>PIM</b>	[REDACTED]
<b>REMA North</b>	[REDACTED]
<b>REMA South</b>	[REDACTED]

## Response Activity

Nothing to report.

## Weather and Climate



Accurate from MetService as at 1000hrs today.

### Current Weather

Today, a low from the Tasman Sea moves east across the South Island and lower North Island. This low brings strong winds and heavy rain across multiple regions.

### RED strong wind warnings

Red strong wind warnings are in place for the Canterbury plains, Christchurch, Banks Peninsula, and Canterbury high Country. The Canterbury region is expected to experience damaging gusts of up to 150km/h around the high country, and gusts of up to 140km/h in Christchurch and plains. Widespread winds are expected to gust consistently up to 130km/h. The high winds are expected to last through today, but ease towards the late evening.

### Impact

MetService advises that these winds are expected to produce widespread damage, especially to trees and powerlines and could lift roofs. Transport and power networks are likely to be significantly impacted, with road closures and power outages. Conditions will be hazardous for motorists and there is a danger to life from flying debris and falling trees or branches.



# UNCLASSIFIED

## Heavy rain warnings.

- Westland, south of Otira. From 0900hrs today, until 1800hrs tomorrow.
- Canterbury lake headwaters, south of Arthur's Pass. From 0900 today, until 1800hrs tomorrow.

## Strong wind warnings.

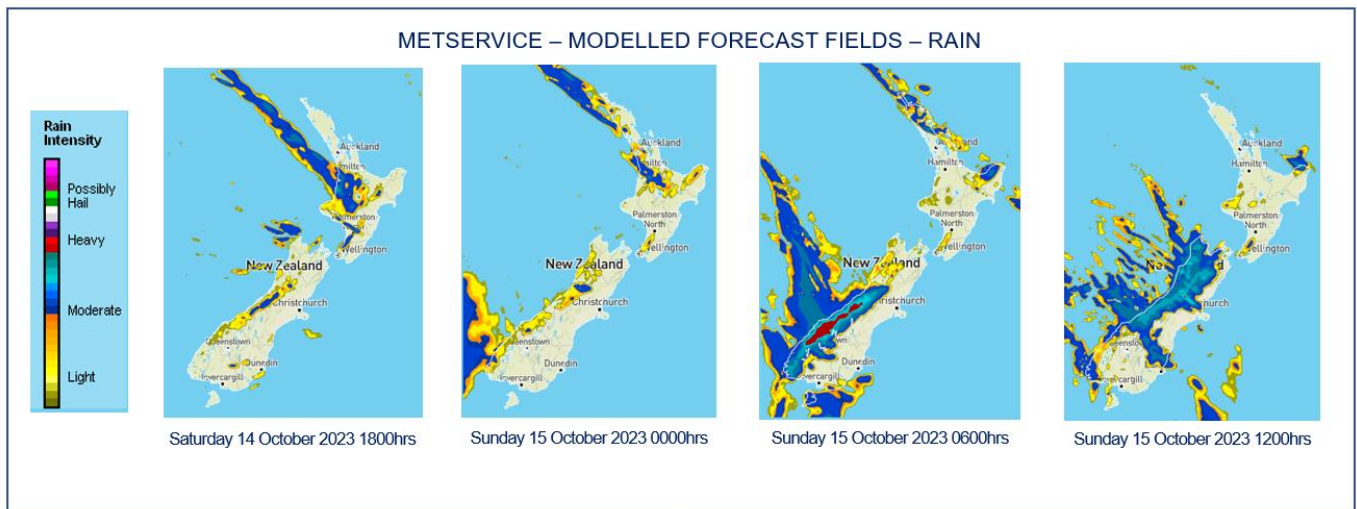
- Wellington and Wairarapa, South of Carterton. From 0900hrs today, until 2000hrs tomorrow.
- Marlborough. From 0900hrs today, until 2100hrs tomorrow.

## Heavy rain watches.

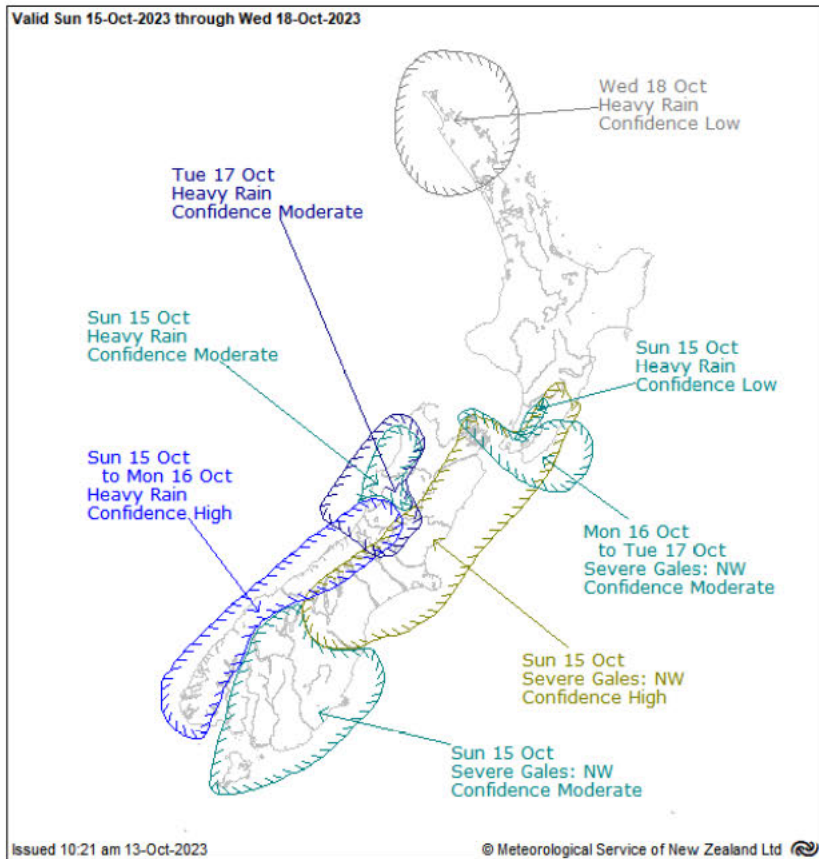
- Tasman district, west of Motueka, Buller and Grey Districts. From 0900hrs today, until 1700hrs tomorrow.
- Otago lake headwaters. From 0900hrs today, until 1200hrs tomorrow.
- Fiordland. From 0900hrs today, until 1000hrs tomorrow.

## Strong wind watches

- Tararua District and Wairarapa, between Woodville and Carterton. From 0900hrs today, until 2000hrs tomorrow.
- Westland, south of Harihari and Fiordland, north of Milford Sound. From 0900hrs today, until 1300hrs tomorrow.
- Queenstown lakes district, Central and North Otago. From 0900hrs today, until 0900hrs tomorrow.
- Southland and Fiordland. From 0100hrs tomorrow morning, until 0800hrs tomorrow.
- Dunedin and Clutha. From 0900hrs today, until 0900hrs tomorrow.



**Severe Weather Outlook**

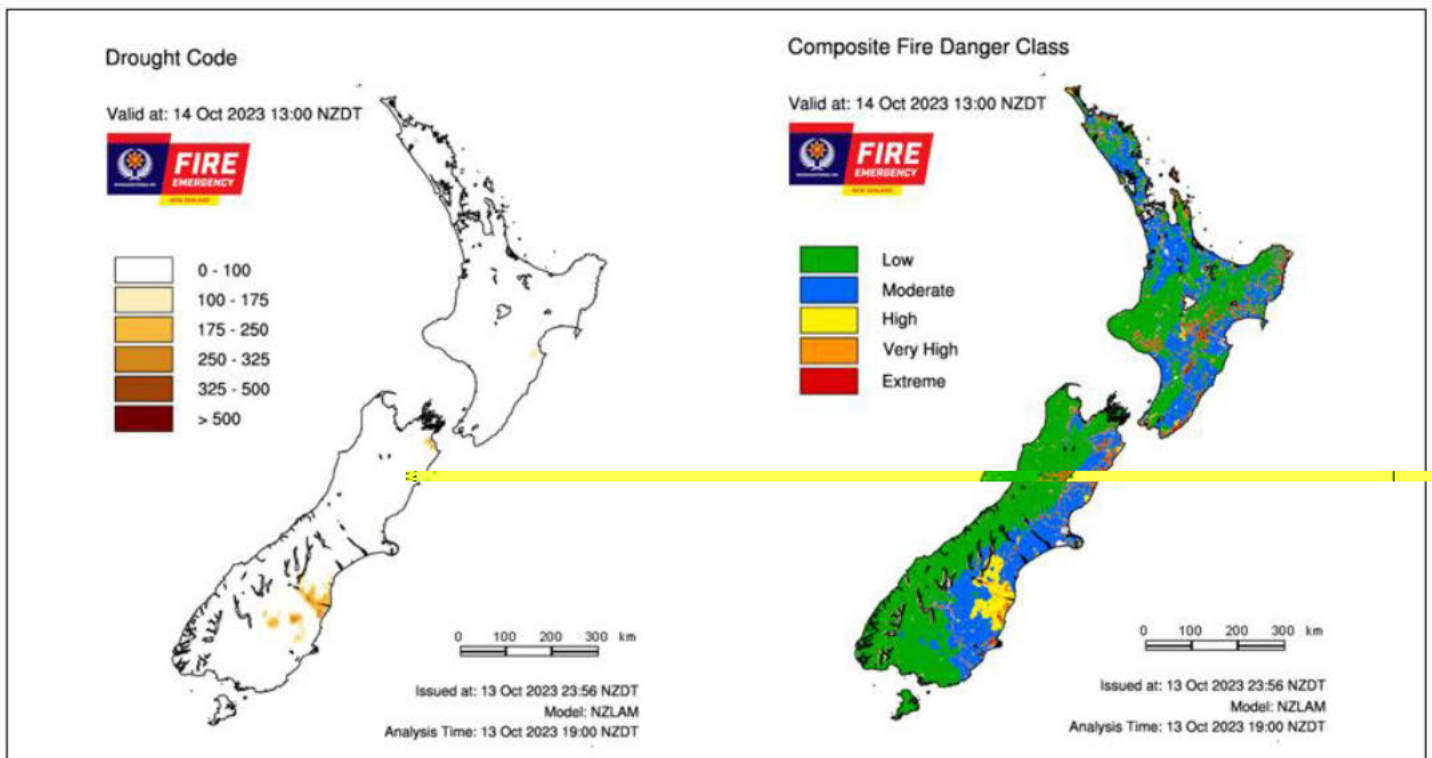


A strong west to northwest flow with embedded fronts covers New Zealand till Wednesday. The fronts may bring heavy rain to the west of the South Island and the Southern Alps. Gales are likely over many South Island areas and the far south of the North Island.

Tomorrow, there is high confidence that rainfall amounts will reach warning criteria in Fiordland, Westland and the adjacent headwaters of Canterbury and moderate confidence in warning amounts of rain in Buller. There is high confidence that northwest winds will reach severe gale about exposed parts of Canterbury, Marlborough, Wellington and Wairarapa including the Tararua District.

On Monday there is high confidence that rainfall amounts will reach warning criteria in Fiordland and Westland. There is moderate confidence in severe northwest gales about exposed parts of the Marlborough Sounds, Wellington and Wairarapa south of the Tararua District.

**Fire and Drought Risk**



Source: [NIWA Fire Weather](#)

**Geological**

**Volcanic Activity (Level 1 and above)**

Prepared by the NEMA Monitoring, Alerting and Reporting Centre to provide awareness that supports informed decision making. Any questions, comments or contributions should be addressed to: [mar@nema.govt.nz](mailto:mar@nema.govt.nz).

## UNCLASSIFIED

Volcano	Level	Volcanic Activity	Aviation Code
Whakaari/ White Island	2	Moderate to heightened volcanic unrest	Yellow
Ruapehu	1	Minor volcanic unrest	Green

GNS Alert Levels guide visit: <https://www.geonet.org.nz/about/volcano/val>

GNS Aviation Colour Codes visit: <https://www.geonet.org.nz/volcano/acc>

## Other Events

Nothing to report.

## Media

### **Cyclone response: Horizons training exercise welcomed by emergency teams**

Emergency response teams created a hive of activity at Horizons Regional Council's co-ordination centre as a fictional cyclone came through.

**NZ Herald**

### **Weather Tracker: Super Typhoon Bolaven moves through western Pacific**

This week the powerful Super Typhoon Bolaven developed in the western Pacific Ocean.

**The Guardian**