

24/10/2023 - E +10 SITREPS

As at 2.48pm on 24/10/2023 prepared by Crispian [REDACTED] approved by Anusha Guler

Distributed to	All GEDT/ELT members
Key Contacts	Anusha Guler and Crispian [REDACTED]
Previous ELT SITREP	E+6 SITREPS 6 20102023 - FINAL.docx
Overview	Summary of the current event <ul style="list-style-type: none">Post election process
Voting Services	GENERAL UPDATE Overseas Operations <ul style="list-style-type: none">No issues to report.Processing continues. Last shipment of voting papers from Overseas Voting Places arrives today.Validation and qualification progressing well. Auckland North Region <ul style="list-style-type: none">No issues to report.Northland electorate ordinary votes count finishes by tonight. Auckland South Region <ul style="list-style-type: none">No issues to report.Processing 18k Special Votes for the Tāmaki Makaurau and Manurewa electorates, some staff worked on Monday (Labour Day)1 scrutineer at Port Waikato. Central North Island Region <ul style="list-style-type: none">No issues to report.7 out of 12 electorates have completed the official count, remaining will be finished by today.Progressing with Special Votes processing in varying stages across the region.Dual votes progressing very well.1 scrutineer at Hamilton East. Lower North Island Region <ul style="list-style-type: none">[REDACTED]7 out of 12 electorates have completed the official count with another two having less than five counts to complete. Remaining three electorates have an average of 75% complete.Special and Dual votes processing is well underway in all electorates.Working on an OIA request regarding a voting place that did not open on Election Day.1 scrutineer at Palmerston North South Island Region (Emma [REDACTED] was in attendance) <ul style="list-style-type: none">14 out 16 electorates have completed the official count.1 scrutineer at Nelson electorate
Enrolment	GENERAL UPDATE: <ul style="list-style-type: none">24,574 enrolment forms to key. Team working very hard to complete keying before finishing tonight – which will allow us to process SVDs (Special Votes Declaration) in the morning.Port Waikato by-election electoral roll and Easy Vote data extraction and QA completed this morning.50K Special Vote Declarations (SVD) in the queue to be processed by tomorrow morning.

IT	<p>GENERAL UPDATE: (apology from Paul)</p> <ul style="list-style-type: none"> No issues to report.
Comms & Education	<p>GENERAL UPDATE:</p> <ul style="list-style-type: none"> No issues to report. Some concern being expressed in media including from political leaders about the time taken to release official results, specifically because results were previously released in two weeks rather than the current three.
Customer Services	<p>GENERAL UPDATE (apologies from Grace)</p> <ul style="list-style-type: none"> No issues to report.
Legal & Policy	<p>GENERAL UPDATE</p> <ul style="list-style-type: none"> No issues to report.
Strategic Engagement and Partnership	<p>GENERAL UPDATE (Eileen was in attendance)</p> <ul style="list-style-type: none"> No issues to report.
Security	<p>GENERAL UPDATE</p> <p>For situational awareness only</p> <ul style="list-style-type: none"> Increased gang activity in Wellington, Napier and Tairāwhiti Coronial enquiry into Christchurch Mosque attacks currently underway in Christchurch Ongoing protests about Israel/Gaza conflict nationwide
People & Culture	<p>GENERAL UPDATE:</p> <ul style="list-style-type: none"> No issues to report.



Issued: 1045hrs 24 Oct 2023

Authorised by: [REDACTED] – Watch Leader

Next update: 1030hrs 25 Oct 2023

Executive Summary

- Heavy rain watches and strong wind watches are in force in several locations, largely across the South Island and lower North Island.
- Tropical Cyclone Lola has reached Category 5 and will track over Vanuatu in the next couple of days.
- A M5.2 earthquake occurred in Arthur's Pass last night. It did not meet thresholds and the event was closed.

NEMA Operational Status

Operational Activity

- NCC is at Mode 1 (MAR Centre Monitoring).

On-Call Roster

Director	[REDACTED]
National Controller	[REDACTED]

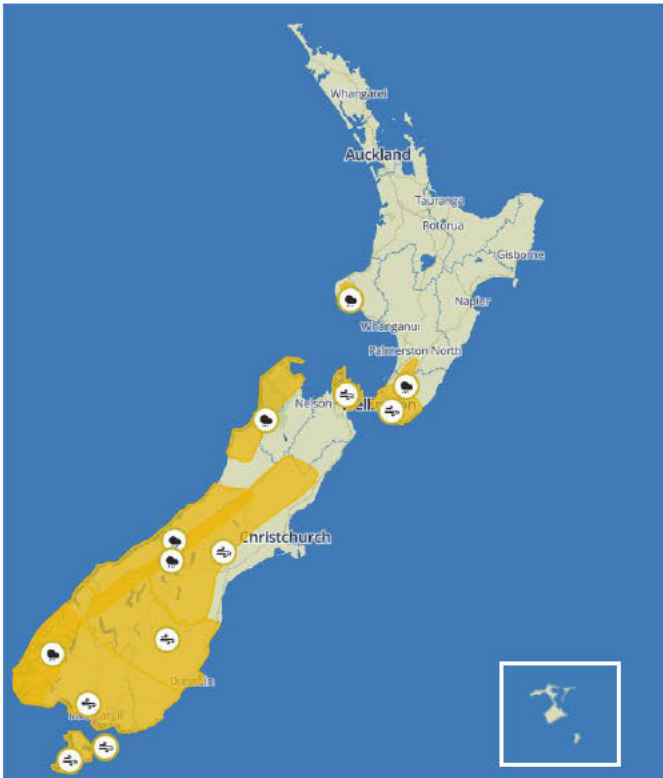
Response Manager	[REDACTED]
Activation Coordinator	[REDACTED]

PIM	[REDACTED]
REMA North	[REDACTED]
REMA South	[REDACTED]

Response Activity

Nothing to report.

Weather and Climate



Accurate from MetService as at 1000hrs today.

Current Weather

A front, preceded by strong northwesterlies, moves north over New Zealand during Tuesday and Wednesday, bringing periods of heavy rain to western parts of the country. Another active front approaches the South Island from the Tasman Sea late Wednesday before moving northwards on Thursday.

There are heavy rain watches in force for Taranaki, Tararua, Kapiti-Horowhenua, Wairarapa, Wellington, Nelson, Buller and Westland coming up for tomorrow.

A strong wind watch is in place for Wairarapa, Wellington and Marlborough on Tuesday through to Wednesday with northwest winds approaching severe gales in exposed places.

Heavy rain watches

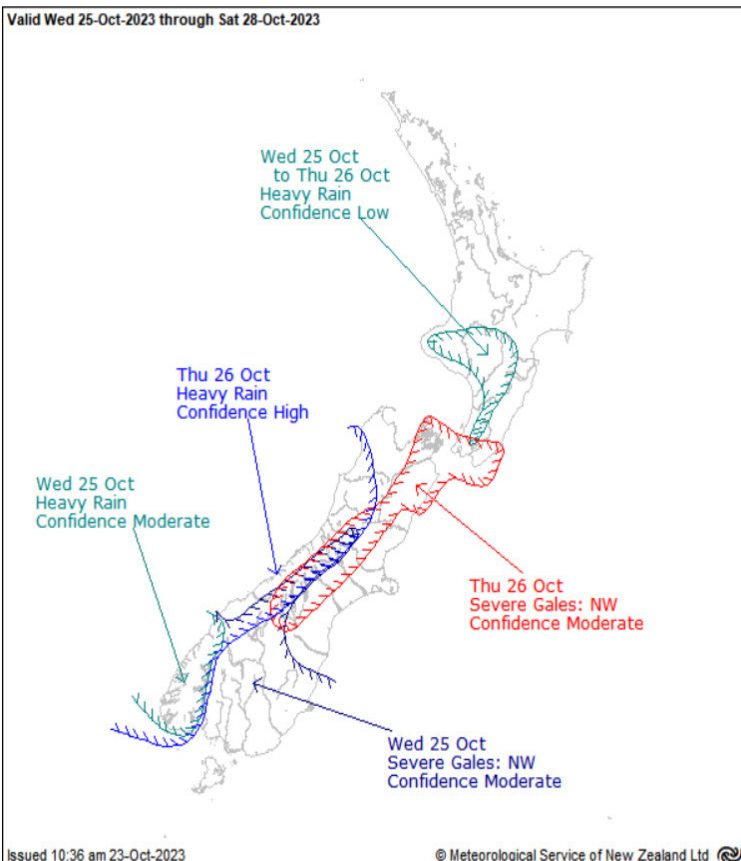
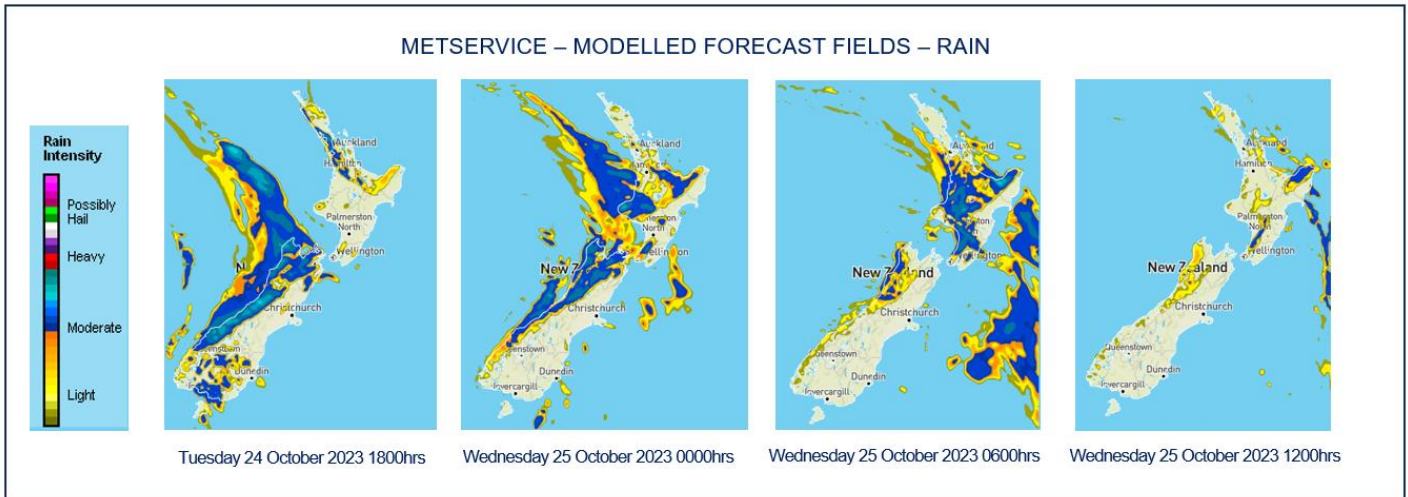
- Taranaki Maunga/Mount Taranaki from 2000hrs today to 0600hrs Tomorrow.
- Tararua Range from 2000hrs today to 0600hrs tomorrow.
- Buller and Tasman northwest of Motueka from 1300hrs today to 0600hrs tomorrow.
- Westland about and south of Otira from 2100hrs today to 0300hrs tomorrow.

UNCLASSIFIED

- Headwaters of Canterbury and Otago Lakes and rivers, about and south of Arthur's Pass from 2100hrs today to 1200hrs Thursday 26 October
- Fiordland from 1800hrs today to 0600hrs Thursday 26 October.

Strong wind watches

- Wairarapa south of Carterton, Wellington and the Marlborough Sounds from 2000hrs today to 0600hrs tomorrow.
- Canterbury High Country from 2100hrs today to 1100hrs Thursday 26 October.
- Otago excluding Clutha from 1800hrs today to 0600hrs Thursday 26 October.
- Fiordland, Southland including Stewart Island and Clutha from 1500hrs today to 0300hrs Thursday 26 October.



Severe Weather Outlook

Tomorrow, a front preceded by a strong moist north westerly flow moves east onto the south of the South Island. There is moderate confidence that rainfall amounts will reach warning criteria in Fiordland and a moderate confidence that severe northwesterly gales will affect the Canterbury high country, Otago, Southland and Fiordland. There is low confidence that rainfall over the North Island ranges south of Lake Taupo will reach warning amounts.

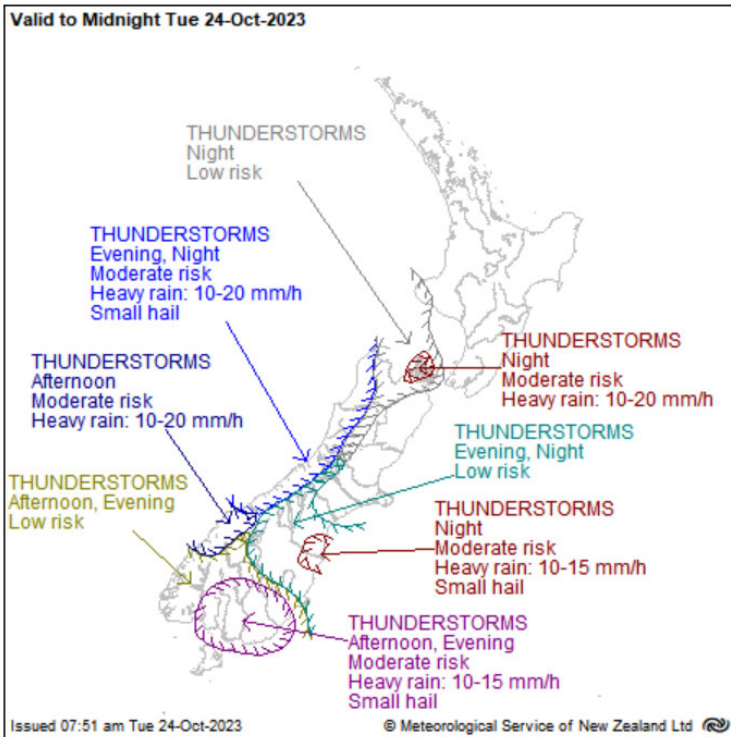
On Thursday, the front moves northeast over the South Island and onto the lower North Island. There is high confidence that rainfall accumulations will reach warning amounts in Fiordland, Westland, Buller and the headwaters of the Otago and Canterbury lakes and rivers. There is moderate confidence in severe northwest gales for the Canterbury high country and foothills, Marlborough, Wellington and Wairarapa south of Carterton. There is again low confidence that rainfall over the North Island ranges south of Lake Taupo will reach warning amounts.

A strong cold southwesterly flow is expected to affect the South Island on Friday.

Severe Thunderstorm Warnings

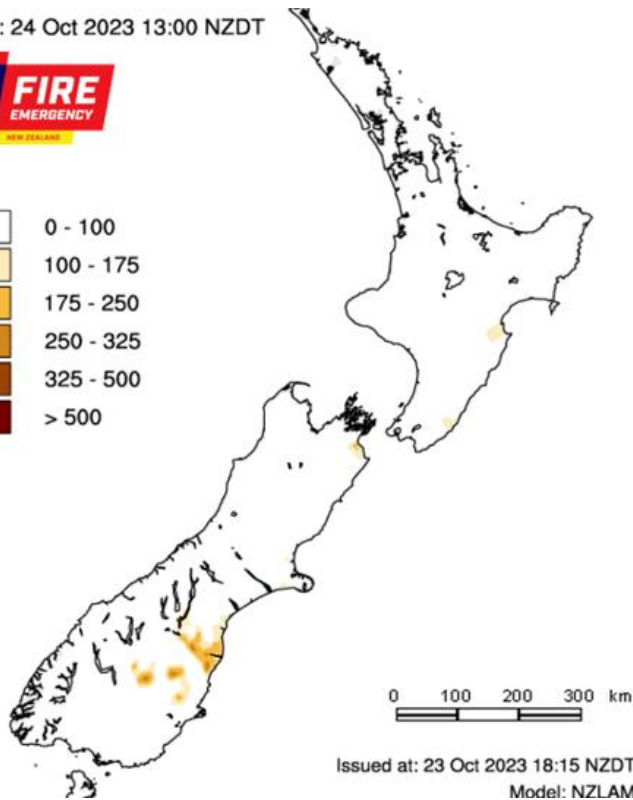
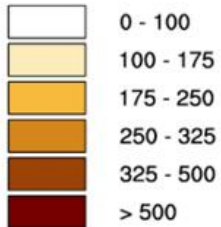
A front in the Tasman Sea moves onto the South Island during the second half of today. As the front moves northwards along the South Island west coast, there is a moderate risk of a few thunderstorms embedded within broader areas of rain about northern Fiordland this afternoon, and Westland, Buller and far western Tasman this evening and tonight. Any thunderstorms that occur in these areas will boost local rainfall rates.

There is also a moderate risk of a few thunderstorms about Southland and southern parts of Otago in the late afternoon and evening, and a moderate risk of one or two thunderstorms about North Otago, South Canterbury and Marlborough Sounds tonight. If any thunderstorms do occur in these areas, they will bring brief heavy rain and small hail.

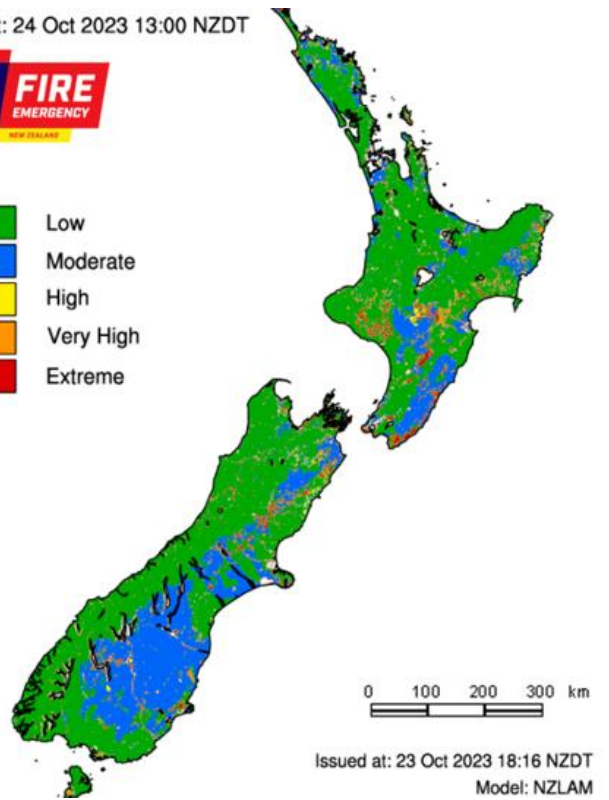
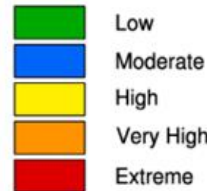


Fire and Drought Risk

Valid at: 24 Oct 2023 13:00 NZDT



Valid at: 24 Oct 2023 13:00 NZDT



Source: [NIWA Fire Weather](https://www.niwa.co.nz/fire-weather)

Geological

Volcanic Activity (Level 1 and above)

Volcano	Level	Volcanic Activity	Aviation Code
Whakaari/ White Island	2	Moderate to heightened volcanic unrest	Yellow
Ruapehu	1	Minor volcanic unrest	Green

GNS Alert Levels guide visit: <https://www.geonet.org.nz/about/volcano/val>

GNS Aviation Colour Codes visit: <https://www.geonet.org.nz/volcano/acc>

Arthur's Pass Earthquake

At 2225hrs last night, a magnitude 5.2 earthquake occurred 25km north-east of Arthur's Pass, with a depth of 5km. Geonet reported over 2000 felt reports. There were no injuries or damages reported. This earthquake was assessed by National Geohazards Monitoring Centre (NGMC) and the Monitoring Alerting and Reporting (MAR) team however as it did not meet thresholds, the event was closed.

Other Events

Tropical Cyclone Lola

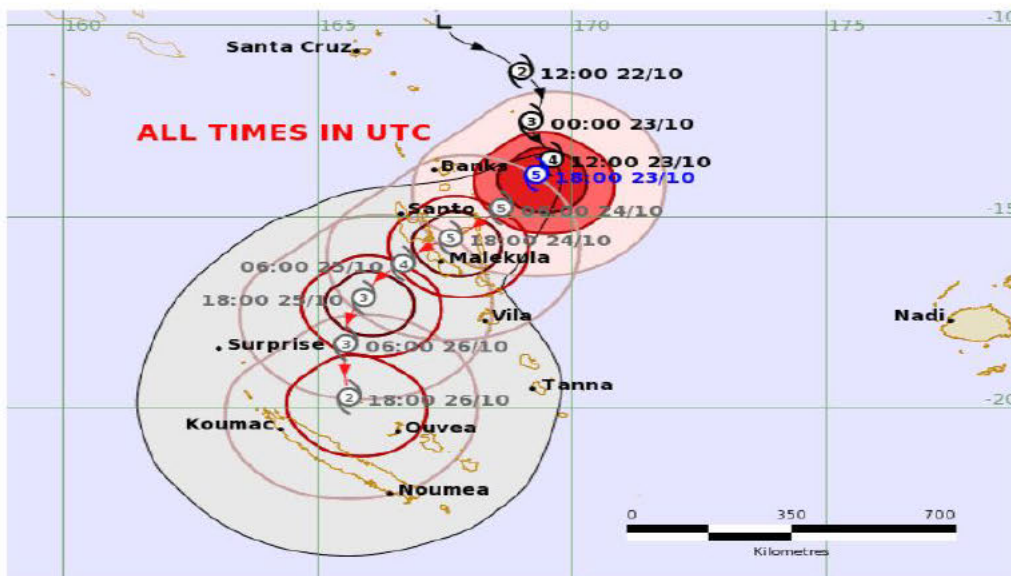
Tropical Cyclone Lola is classified as a Category 5 by the Fiji Meteorological Service. Tropical Cyclone Lola currently lies within Fiji's areas of responsibility and is moving in a general south direction at 7km/h. It is expected to impact Vanuatu's northern islands from Tuesday. New Zealand stands ready to assist our Vanuatu whānau and to consider any requests for assistance.

Official warnings and track maps can be found on the Fiji Meteorological Service website (<https://www.met.gov.fj/>).

TROPICAL CYCLONE FORECAST TRACK MAP

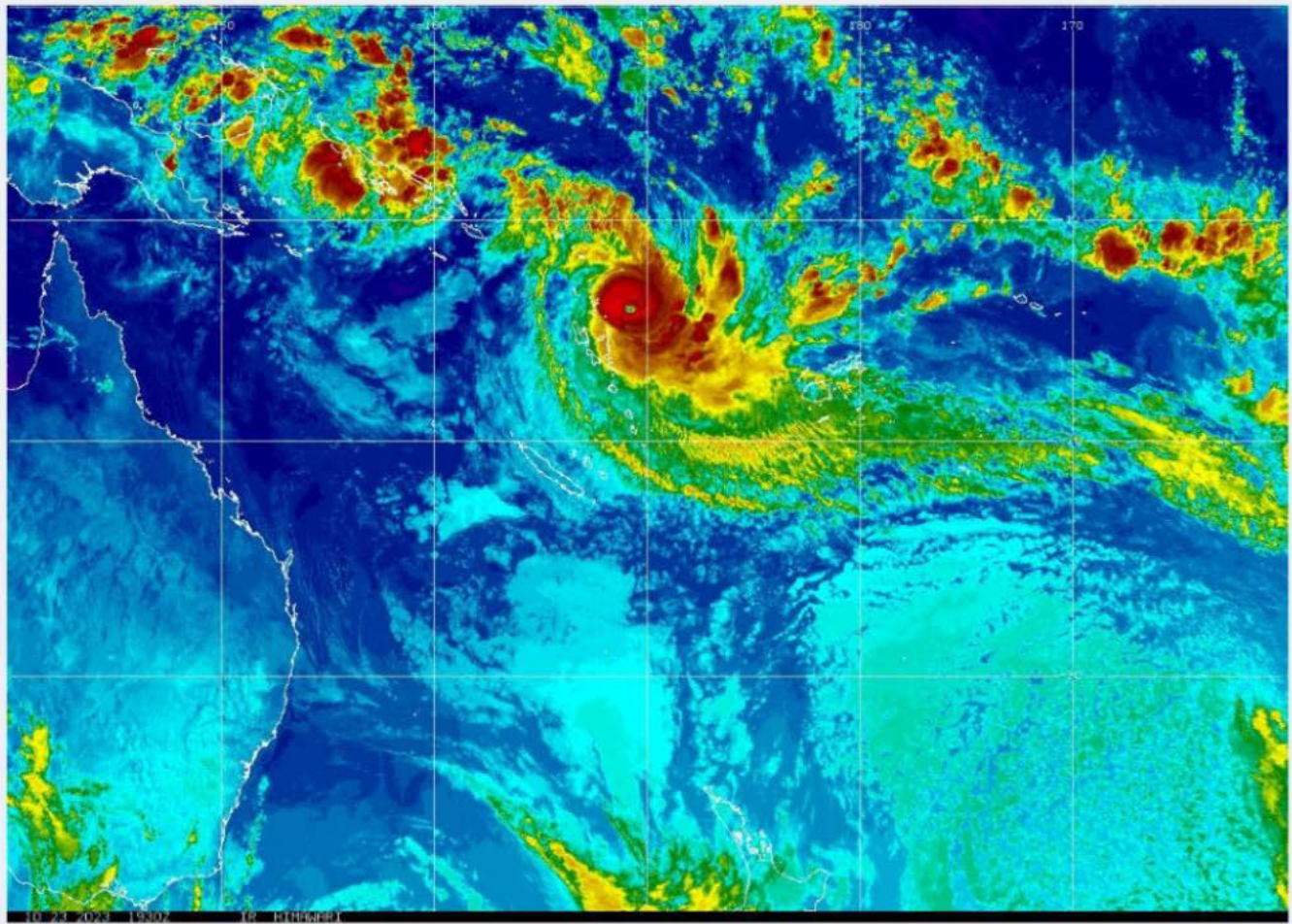
Severe Tropical Cyclone Lola

Tropical Cyclone Warning Number 14 issued 1916 UTC Monday 23 October 2023



Current and Past Cyclone Details		Forecast Cyclone Details (at 24, 48 and 72 hours from issue)	
Current Location and Intensity Number	🌀 or L	Forecast Location and Intensity Number	🌀 or L
Very Destructive Hurricane Force Winds	🔴	Very Destructive Wind Boundary	🔴
Destructive Storm Force Winds	🔴	Destructive Wind Boundary	🔴
Damaging Gale Force Winds	🔴	Gale Force Wind Boundary	🔴
Past Track and Movement	➡	Most Likely Future Track	➡
Past Location and Intensity Number	🌀 or L	Range of Likely Tracks over 72 hours	🌀

Prepared by the NEMA Monitoring, Alerting and Reporting Centre to provide awareness that supports informed decision making. Any questions, comments or contributions should be addressed to: mar@nema.govt.nz.



Source: [Fiji Meteorological Service](#)

Media

Tairāwhiti tops participation in national earthquake and tsunami drill

Tairāwhiti chalked up the highest participation rate in the country for the third year running during this year's annual earthquake and tsunami drill.

[RNZ](#)

Faults near Wellington found to be more active than scientists thought

Scientists have discovered two faults north of Wellington to be more active than they first thought – and potentially capable of kicking off with others in big earthquakes.

[NZ Herald](#)

Stream turns to torrent during Storm Babet

Watch as the Balruddery Burn in Angus turns into a torrent of water after intense rainfall during Storm Babet.

[BBC](#)