



DAILY INTERAGENCY REPORT TO GEDT

Submitted daily not later than 11am.

Date: 11 October 2023

DPMC:

FYI - The ODESC System has been activated to consider the consequences of the Israeli – Hamas conflict.

NZ Police:

Several climate change protesters were ejected out of the audience at the Christchurch Press Leaders Debate on the evening of 10th October, after calling out ACT Party Leader David Seymour and unveiling a “Restore Passenger Rail” banner. SOURCE: NZ Herald.
There is currently no significant policing operation for protests or other planned activities, beyond a routine presence at certain events. No significant protest or disruptive action is currently known.

NEMA (Daily Intelligence Briefing attached):

NSTR

GCSB:

NSTR

NZSIS:

Reporting via the JIG

MoH:

NSTR

IN-CONFIDENCE

Waka Kotahi:

<https://www.journeys.nzta.govt.nz/highway-conditions/traffic-and-travel-list-view/>

NSTR

MFAT:

NSTR

Moj:

Port Waikato by-election
The Ministry is working with the Electoral Commission and Treasury to develop advice for the Minister of Justice on (i) funding requirements and (ii) a technical Order in Council that may be required to support the delivery of the Port Waikato by-election.

FENZ:

NSTR

MPI:

NSTR

MBIE:

NSTR

Prepared by: David [REDACTED]

IN-CONFIDENCE

11/10/2023– Situation Report ELECTION Week 5

As at 10.02am on 11/10/2023 prepared by Crispian [REDACTED]

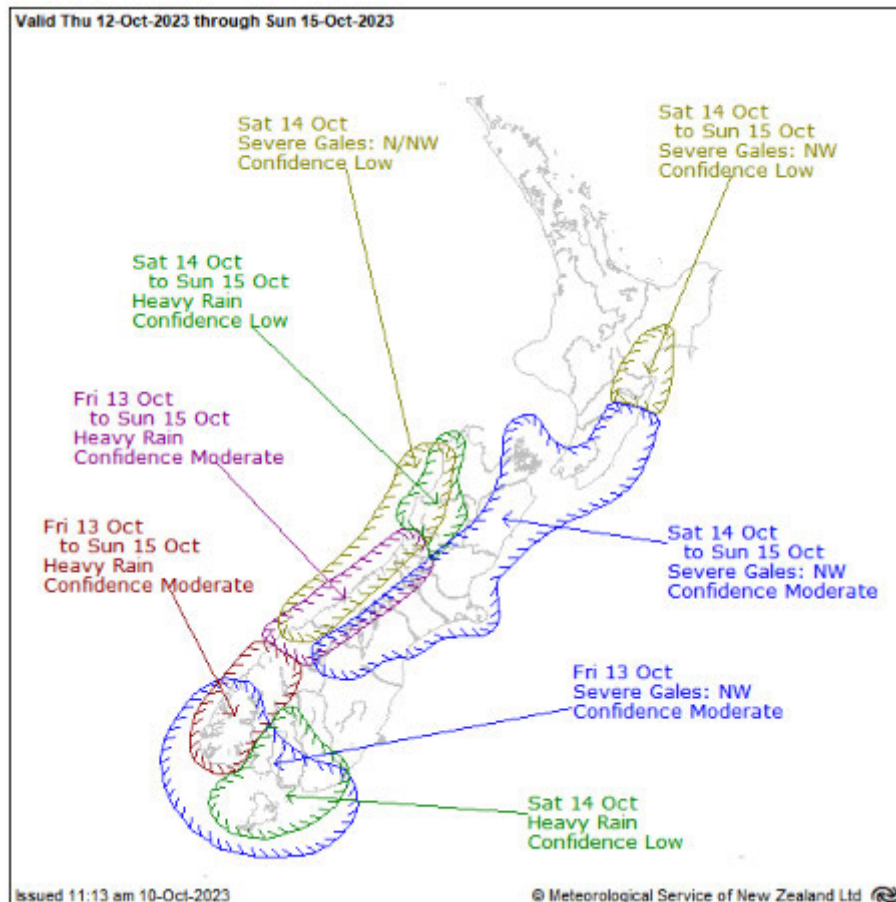
Distributed to	All GEDT members
Key Contacts	Anusha Guler and Crispian [REDACTED]
Previous ELT SITREP	3 ELT Standup SITREPS 5 10102023 - FINAL.docx
Overview	<p>Summary of the current event</p> <ul style="list-style-type: none"> Final week of election Voting for Port Waikato electorate – party votes carry on, electorate votes will not be counted Prime Minister selected Saturday, 25 November as the date for a by-election <ul style="list-style-type: none"> Official results declared Wednesday 6 December Advance voting starts Monday 13 November Overseas voting starts Wednesday 8 November Candidate nominations to be received by midday Friday, 20 October By-election Writ Day will be Monday, 16 October Election day preparedness
Key Dates	Days to election day – 3 days
After hours emergency contact number	<p>ELT ON CALL FOR TODAY – Lucy</p> <p>In case of any emergency or any decision that you require from ELT after hours, please ring this number.</p> <p>Number to ring – [REDACTED]</p> <p>After hours - 5pm until 8.30am</p>
Voting Services	<p>GENERAL UPDATE</p> <p>Overseas Operations</p> <ul style="list-style-type: none"> Downloads and uploads continue to follow a similar increasing trend as previous elections. Approx 67K votes issued with approx 40k votes received. More data here; - Overseas, Dictation, and Remote Voting: Overseas, Dictation, Remote, eLearn - Tableau Cloud Overseas Voting Places (OVPs) start to progressively close from late tonight. IT issue this morning covered elsewhere. Timing meant impact was minimal. <p>Voting Place – Auckland North</p> <ul style="list-style-type: none"> A small number of issues, nothing to report to this group. We are forcing staff that have worked extreme hours to have time off this week, and where possible, to have Sunday off. Checking that the Headquarters (HQ) areas are set up for the Saturday early counts etc. And checking that the key staff in each electorate know their roles. Additional training is being given this week. The early counts will be smaller than forecast as the number of advanced votes are down. We are setting up the count teams accordingly. Voting place staff are rostered with backups in place. <p>Voting Place – Auckland South</p> <ul style="list-style-type: none"> Staff are reporting a drop-off of voting in Port Waikato after the announcement of by-election. <p>Voting Place – Central North Island</p> <ul style="list-style-type: none"> No significant issues to report. Smell of smoke in the Tukituki HQ, Marcia assisting. No fire, likely cause is renovations on the floor above. Reconciliation app issues significantly down on previous days. Currently working on contingency workforce issues. Seeking four NO staff to act as VPM's and to be on standby. Considering contingency in the event of on the day staff absence. Based around standby and

	<p>NO contingency staff.</p> <p>Voting Place – Lower North Island</p> <ul style="list-style-type: none"> • The Regional Manager and Regional Advisor are checking staff are prepared for early count and Election Day activities. • Learning & Development Advisor from National Office will be heading over to Wairarapa to be a Mobile Support for us on Election Day to allow for a VPM to be sent up to central Hawkes Bay area for Election Day • Health, Safety & Wellbeing Lead is working with our Prison team today to assist getting through the 300 odd remand prisoners at Remutaka prison. <p>Voting Place – South Island</p> <ul style="list-style-type: none"> • We are well prepared with the things we can control at this stage of the week. • We are fully staffed and have backups available everywhere or within a 1 -2hr drive. • We have 4 National Office contingency staff going into Greymouth, Oamaru, Twizel and North Canterbury to bolster backup staff or perform roles we couldn't fill. • One Electorate Manager has tested positive for Covid this morning but she has good plans in place and her electorate is well prepared. We have Regional Advisors (RA), the RTM and previous RA stationed around the region in electorates we feel are more vulnerable. <p>Voting Services</p> <ul style="list-style-type: none"> • Systems issues this morning impacted the operation of eRoll in voting places and the UVP systems for the Overseas Team. It would be good to understand the issue and gain assurance around Election Day. • Regional Managers will be talking to the Electorate Managers about preparing for higher Election Day voting numbers than expected, due to current voting trends.
Enrolment	<p>GENERAL UPDATE</p> <ul style="list-style-type: none"> • Issues with VoteNZ and Enquiries full inboxes and cannot accept any more emails, currently being dealt with by IT.
IT	<p>GENERAL UPDATE:</p> <p>Major IT incident - Connectivity issues:</p> <p>Between 0800 and 1040 users experienced issues connecting to some Electoral Commission systems, primarily those hosted in the Catalyst Cloud that impacted multiple external customers.</p> <p>EC Systems and services that were affected:</p> <ul style="list-style-type: none"> • UVP/DVP • Election Results • Tupu e-learning • e-Roll mobile app • Digital enrol online • Telnet Call Centre roll query app <p>Root cause is believed to be a security patch that was applied by Catalyst security provider Cloudflare in the early hours, this still needs to be 100% confirmed. IT has pressed the importance of expediting the Post Incident Report (PIR) to provide assurance going forwards.</p>
Comms & Education	<p>GENERAL UPDATE:</p> <ul style="list-style-type: none"> • Media release yesterday following the PM's announcement containing a full timetable for the Port Waikato by-election. • Chief Electoral Officer interviewed today for Breakfast to air Friday morning; DCE, Operations interviewed for Pacific Media Network this morning. • Media - attention is turning to the last days of voting. A media release on this will be shared this Friday, before election day. Large number of requests for filming at voting places. Ongoing focus on the costs of a (second) election. • Our election advertising is running at its highest level across all of our channels with a transactional message to 'Vote now' and motivational messages to 'Make your voice heard' <p>Social media</p>

	<ul style="list-style-type: none"> Ongoing chat and comments about EasyVote cards, rural voting places and voter ID. Proactive posts for today – what to do if you’re unwell and can’t get to a voting place; carousel of definitions (election integrity); Whakaata Māori motivation ad. <p>Daily metrics</p> <ul style="list-style-type: none"> 16 media enquiries – about 12 did not come through yesterday because of inbox issues 311 enquiries and comments on social media in 24 hours Web visits: 107,619 						
Customer Services	<p>GENERAL UPDATE:</p> <ul style="list-style-type: none"> Since yesterday, the team resolved 786 tickets, received 64 phone calls and made 17 outbound calls. 88% of tickets were resolved in one-touch. Telnet received 1,680 calls and 165 emails. The top enquiry was about Where to Vote (15%), followed by Update details (13%), New Enrolment (10%) and How to Vote (10%). 22% of the contacts were triggered by Brochure and 21% by Word of Mouth (21%) 54 complaints are on hand across the business units (400 complaints were resolved since the 31 July). Email auto-reply message has been updated to encourage voters to checkout our website or contact 0800 service in the first instance for their enquiries. 						
Legal & Policy							
Strategic Engagement and Partnership	<p>INSIGHTS (Eileen to cover)</p> <ul style="list-style-type: none"> Nothing of note to report. 						
Interagency Report	<p>DPMC</p> <ul style="list-style-type: none"> The ODESC System has been activated to consider any domestic impacts of the Israeli – Hamas conflict. 						
Security	<p>GENERAL UPDATE:</p> <ul style="list-style-type: none"> Police are rostering extra staff for Election Day and tasking reassurance patrols around Voting Places. <p>One security incident reported from the field yesterday, 10 October 2023</p> <table border="1"> <thead> <tr> <th>Type</th> <th>Reported</th> <th>Under active management</th> </tr> </thead> <tbody> <tr> <td>Threat to Voting Place</td> <td>1</td> <td>1</td> </tr> </tbody> </table> <ul style="list-style-type: none"> <div style="background-color: black; color: white; padding: 10px; text-align: center;">6(c)</div> 	Type	Reported	Under active management	Threat to Voting Place	1	1
Type	Reported	Under active management					
Threat to Voting Place	1	1					
People & Culture	<p>GENERAL UPDATE:</p> <p>Recruitment:</p> <ul style="list-style-type: none"> Two National Office employees potentially heading to South Island Oamaru and Greymouth as Voting Place Managers (VPM). Three National Office employees potentially heading to Gisborne (VPM) We have three additional VPMs in Wellington trained as well as four Issuing Officers. 						
FOR YOUR INFORMATION							
Severe Weather Outlook	<p>A west to northwest flow will predominate over New Zealand from Thursday to Sunday, with embedded fronts moving over the country during the weekend. These fronts are expected to be preceded by strong northwesterlies, and bring periods of heavy rain to the western and possibly southern South Island.</p> <p>There is moderate confidence that these fronts will bring warnable rainfall amounts to Westland, Fiordland and the headwaters of western Southland, Otago and Canterbury (near the main divide) later Friday and</p>						

Saturday, and again on Sunday. There is low confidence of warnable rainfall about Buller and far western Tasman on Saturday and Sunday, and also low confidence that southerly rain could reach short duration warning rainfall amounts about other parts of Southland, and possibly southern Otago, on Saturday.

There is moderate confidence that northwest winds will reach severe gale about exposed parts of southern Fiordland, Southland and Clutha on Friday, and **moderate confidence of severe northwest gales about exposed parts of Canterbury, Marlborough, Wellington and Wairarapa (including the Tararua District) on Saturday and Sunday**. Additionally, there is low confidence of severe north or northwest gales about Buller and Westland on Saturday, and also about parts of Hawke's Bay on Saturday and Sunday.

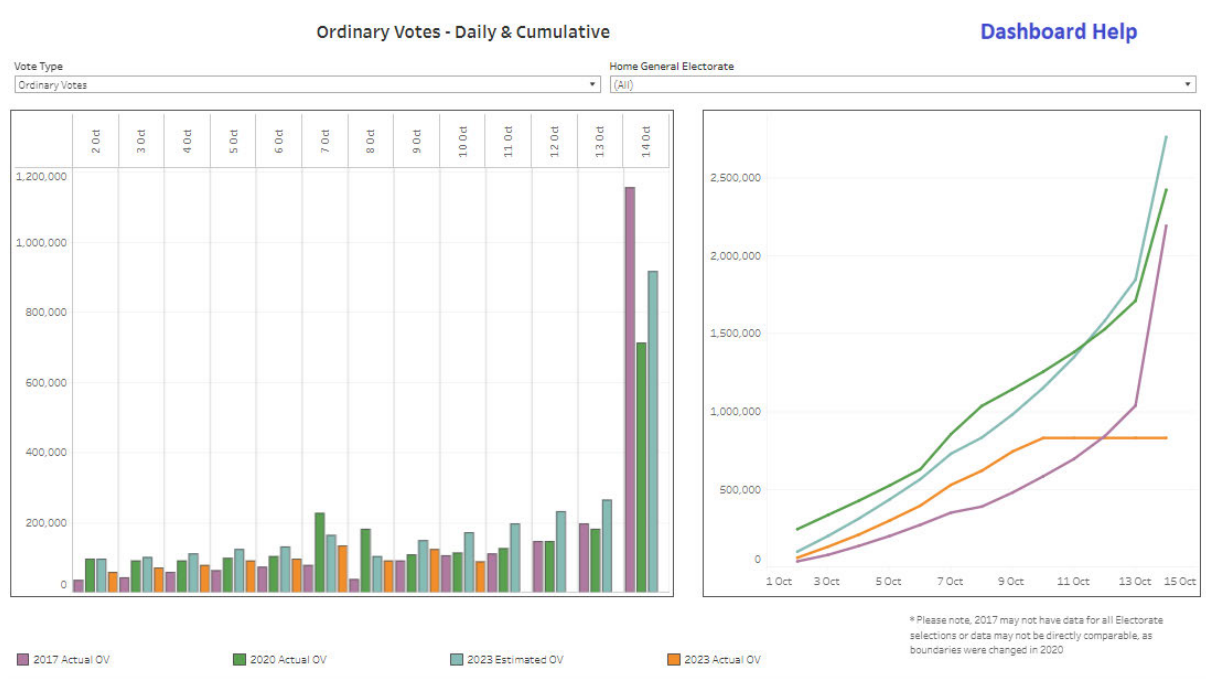


**MetService
Extended
Forecast - 14
Oct**

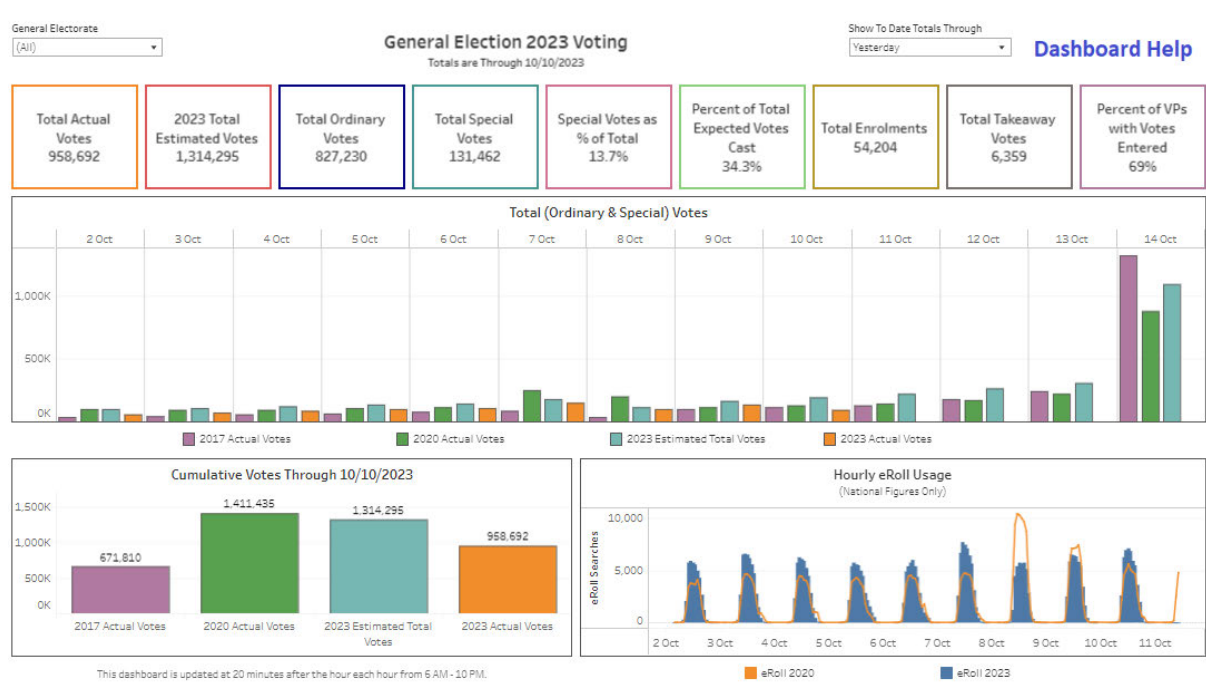
Saturday

North Island: Scattered showers in the west, with a period of rain spreading north. Cloudy periods in the west, with scattered falls spreading north. South Island: Rain with heavy falls in the west, easing to showers later. Scattered falls elsewhere clearing, but isolated showers linger in the south.

Ordinary Votes – Daily and cumulative



GE 2023 Voting



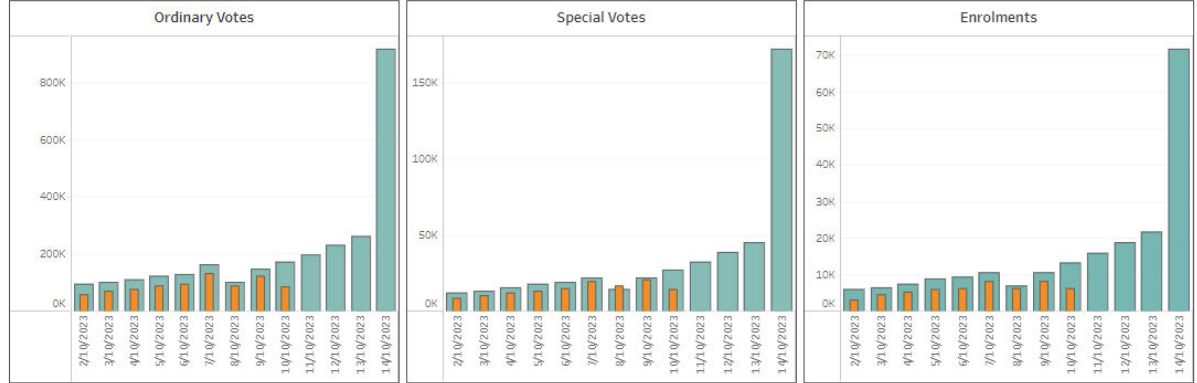
Estimates and Actuals by Voting Place and Day

[Dashboard Help](#)

Totals are Through 10/10/2023

Home General Electorate:
 Home Māori Electorate:
 Voting Place:
 Show To Date Totals Through:

Total Votes 958,692	2023 Total Estimated Votes 1,314,295	Total Ordinary Votes 827,230	Total Special Votes 131,462	Special Votes as % of Total 13.7%	Percent of Total Expected Votes Cast 83.88%	Total Enrolments 54,204	Total Takeaway Votes 6,359
-------------------------------	--	--	---------------------------------------	---	---	-----------------------------------	--------------------------------------



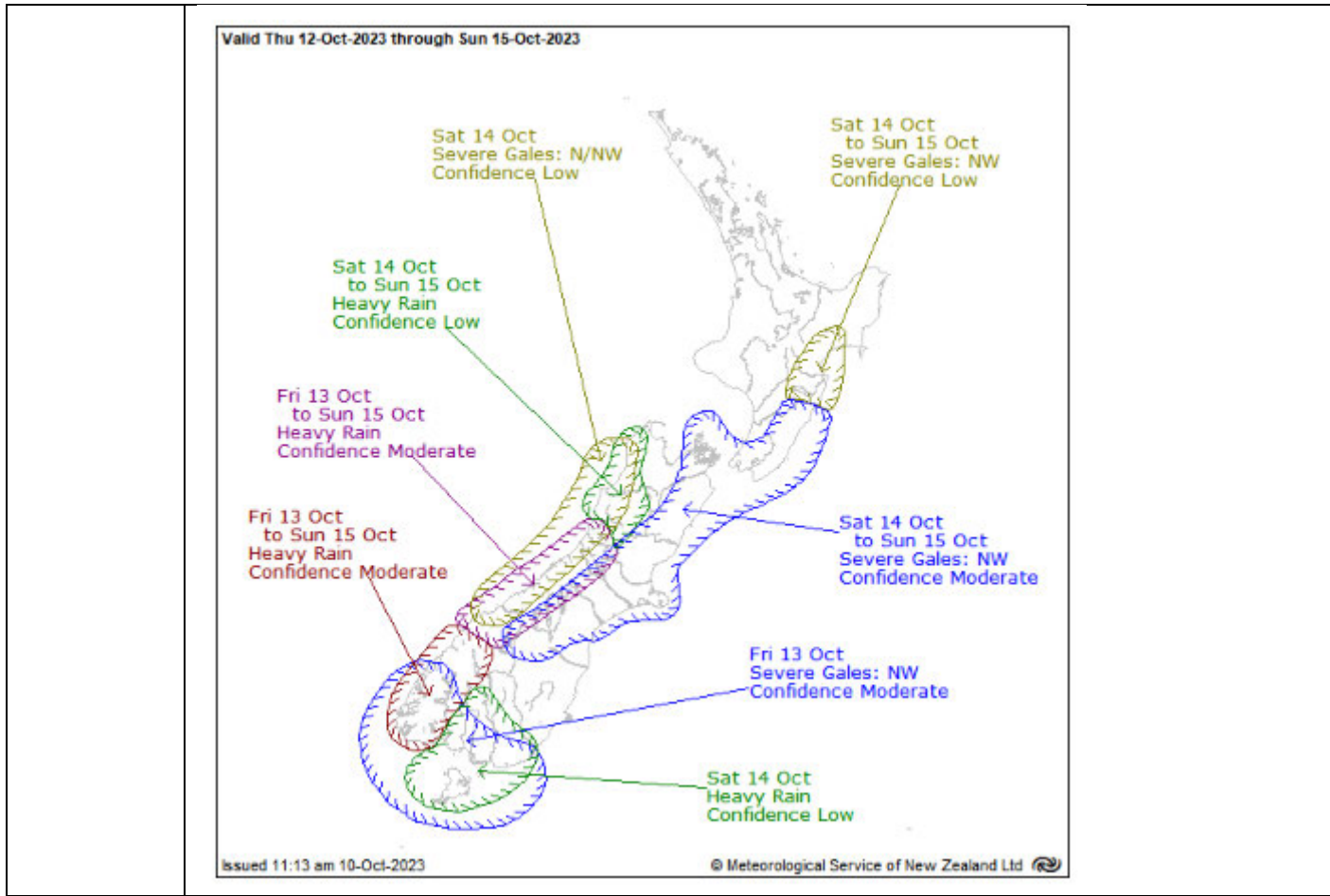
11/10/2023– ELT Situation Report ELECTION Week 5

As at 2.28pm on 11/10/2023 prepared by Crispian [REDACTED] approved by Martin Rodgers

Distributed to	ELT members
Key Contacts	Anusha Guler and Crispian [REDACTED] Martin chaired the meeting.
Previous ELT SITREP	3 ELT Standup SITREPS 5 10102023 - FINAL.docx
Overview	<p>Summary of the current event</p> <ul style="list-style-type: none"> Final week of election Voting for Port Waikato electorate – party votes carry on, electorate votes will not be counted Prime Minister selected Saturday, 25 November as the date for a by-election <ul style="list-style-type: none"> Official results declared Wednesday 6 December Advance voting starts Monday 13 November Overseas voting starts Wednesday 8 November Candidate nominations to be received by midday Friday, 20 October By-election Writ Day will be Monday, 16 October Election Day preparedness Stood up a separate project team to manage the Port Waikato by-election
Key Dates	Days to election day – 3 days
After hours emergency contact number	<p>ELT ON CALL FOR TODAY – Lucy</p> <p>In case of any emergency or any decision that you require from ELT after hours, please ring this number.</p> <p>Number to ring – [REDACTED]</p> <p>After hours - 5pm until 8.30am</p>
Voting Services	<p>GENERAL UPDATE</p> <p>Overseas Operations</p> <ul style="list-style-type: none"> Downloads and uploads continue to follow a similar increasing trend as previous elections. There are 2 rounds of delivery returns. No problem encountered for the first delivery run. Approx 67K votes issued with approx 40k votes received. Overseas Voting Places (OVPs) start to progressively close from tonight. <p>Voting Place – Auckland North</p> <ul style="list-style-type: none"> We are ensuring staff that have worked extremely long hours have time off this week, and where possible, to have Sunday off. Headquarters (HQ) areas are set up for the Saturday early counts and key staff in each electorate know their roles. Additional training is being given this week. Assuming the early counts will be smaller than forecast as the number of advanced votes are down. We are setting up the count teams accordingly. Voting Place staff are rostered with backups in place. Security planning for the protest marches at Aotea Square. <p>Voting Place – Auckland South</p> <ul style="list-style-type: none"> Staff are reporting a drop-off of voting in Port Waikato after the announcement of by-election. <p>Voting Place – Central North Island</p> <ul style="list-style-type: none"> Incident at Tukituki headquarters - removing strong smell of smoke due to burnt fuses, electrician have been called in. Reconciliation app issues significantly down on previous days. Requested contingency workforce from National Office to assist with Gisborne Voting Place. <p>Voting Place – Lower North Island</p> <ul style="list-style-type: none"> The Regional Manager and Regional Advisor are ensuring staff are prepared for early count and Election Day activities.

	<ul style="list-style-type: none"> • Learning & Development Advisor from National Office will be heading over to Wairarapa to be a Mobile Support for us on Election Day to allow for a Voting Place Manager to be sent up to central Hawkes Bay area for Election Day • Health, Safety & Wellbeing Lead is working with our Prison team today to assist getting through the 300 odd remand prisoners at Remutaka prison. • Working with Police College who will be sending 2 busloads of Police cadets to the appropriate Voting Place/s to vote. <p>Voting Place – South Island</p> <ul style="list-style-type: none"> • We are well prepared for election day activities • We are fully staffed and have backups available everywhere or within a 1 -2hr drive. • We have 4 National Office contingency staff going into Greymouth, Oamaru, Twizel and North Canterbury to bolster backup staff or perform roles we couldn't fill. • One Electorate Manager has tested positive for Covid this morning, but she has good plans in place and her electorate is well prepared. We have Regional Advisors (RA), the Regional Training Manager (RTM) and previous RA stationed around the region in electorates we feel are more vulnerable. <p>Voting Services</p> <ul style="list-style-type: none"> • Regional Managers will be talking to the Electorate Managers about preparing for higher Election Day voting numbers than expected, due to current voting trends.
Enrolment	<p>GENERAL UPDATE</p> <ul style="list-style-type: none"> • Issues with VoteNZ and Enquiries full inboxes and cannot accept any more emails, currently being dealt with by IT. • Advising Voting Services field staff to immediately start scanning enrolment forms on Sunday. Enrolment has only 3 days for processing the forms.
IT	<p>GENERAL UPDATE:</p> <p>Major IT incident - Connectivity issues:</p> <p>Between 08h00 and 10h40 users experienced issues connecting to some Electoral Commission systems, primarily those hosted in the Catalyst Cloud that impacted multiple external customers.</p> <p>EC Systems and services that were affected:</p> <ul style="list-style-type: none"> • UVP/DVP • Election Results • Tupu e-learning • e-Roll mobile app • Digital enrol online • Telnet Call Centre roll query app <p>Root cause is believed to be a security patch that was applied by Catalyst security provider Cloudflare in the early hours, this still needs to be 100% confirmed. IT has pressed the importance of expediting the Post Incident Report (PIR) to provide assurance going forwards. We have requested Catalyst to stop all further updates and patches.</p>
Comms & Education	<p>GENERAL UPDATE:</p> <ul style="list-style-type: none"> • Media release yesterday following the PM's announcement containing a full timetable for the Port Waikato by-election. • Chief Electoral Officer interviewed today for Breakfast to air Friday morning; DCE Operations interviewed for Pacific Media Network this morning. • Media - attention is turning to the last days of voting. A media release on this will be shared this Friday, before Election Day. Large number of requests for filming at voting places. Ongoing focus on the costs of a (second) election. • Our election advertising is running at its highest level across all of our channels with a transactional message to 'Vote now' and motivational messages to 'Make your voice heard' <p>Social media</p> <ul style="list-style-type: none"> • Ongoing chat and comments about EasyVote cards, rural voting places and voter ID.

	<ul style="list-style-type: none"> Proactive posts for today – what to do if you're unwell and can't get to a voting place; carousel of definitions (election integrity); Whakaata Māori motivation ad. <p>Daily metrics</p> <ul style="list-style-type: none"> 16 media enquiries – about 12 did not come through yesterday because of inbox issues 311 enquiries and comments on social media in 24 hours Web visits: 107,619 						
Customer Services	<p>GENERAL UPDATE:</p> <ul style="list-style-type: none"> Since yesterday, the team resolved 786 tickets, received 64 phone calls and made 17 outbound calls. 88% of tickets were resolved in one-touch. Telnet received 1,680 calls and 165 emails. The top enquiry was about Where to Vote (15%), followed by Update details (13%), New Enrolment (10%) and How to Vote (10%). 22% of the contacts were triggered by Brochure and 21% was by Word of Mouth (21%) 54 complaints are on hand across the business units (400 complaints have been resolved since the 31 July). 						
Legal & Policy	<ul style="list-style-type: none"> Nothing to report. 						
Strategic Engagement and Partnership	<p>INSIGHTS</p> <ul style="list-style-type: none"> Nothing to report. 						
Interagency Report	<p>DPMC</p> <ul style="list-style-type: none"> The ODESC System has been activated to consider any <u>domestic</u> impacts of the Israel – Hamas conflict. 						
Security	<p>GENERAL UPDATE:</p> <ul style="list-style-type: none"> Police are rostering extra staff for Election Day and tasking reassurance patrols around Voting Places. <p>One security incident reported from the field yesterday, 10 October 2023</p> <table border="1"> <thead> <tr> <th>Type</th> <th>Reported</th> <th>Under active management</th> </tr> </thead> <tbody> <tr> <td>Threat to Voting Place</td> <td>1</td> <td>1</td> </tr> </tbody> </table> <ul style="list-style-type: none"> <div style="background-color: black; color: white; text-align: center; padding: 10px; width: fit-content; margin: 10px auto;">6(c)</div> 	Type	Reported	Under active management	Threat to Voting Place	1	1
Type	Reported	Under active management					
Threat to Voting Place	1	1					
People & Culture	<p>GENERAL UPDATE:</p> <ul style="list-style-type: none"> Supporting regional Voting Services teams with contingency workforce needs as noted above. 						
FOR YOUR INFORMATION							
Severe Weather Outlook	<p>A west to northwest flow will predominate over New Zealand from Thursday to Sunday, with embedded fronts moving over the country during the weekend. These fronts are expected to be preceded by strong northwesterlies, and bring periods of heavy rain to the western and possibly southern South Island.</p> <p>There is moderate confidence that these fronts will bring warnable rainfall amounts to Westland, Fiordland and the headwaters of western Southland, Otago and Canterbury (near the main divide) later Friday and Saturday, and again on Sunday. There is low confidence of warnable rainfall about Buller and far western Tasman on Saturday and Sunday, and also low confidence that southerly rain could reach short duration warning rainfall amounts about other parts of Southland, and possibly southern Otago, on Saturday.</p> <p>There is moderate confidence that northwest winds will reach severe gale about exposed parts of southern Fiordland, Southland and Clutha on Friday, and moderate confidence of severe northwest gales about exposed parts of Canterbury, Marlborough, Wellington and Wairarapa (including the Tararua District) on Saturday and Sunday. Additionally, there is low confidence of severe north or northwest gales about Buller and Westland on Saturday, and also about parts of Hawke's Bay on Saturday and Sunday.</p>						



**MetService
Extended
Forecast - 14
Oct**

Saturday
North Island: Scattered showers in the west, with a period of rain spreading north. Cloudy periods in the west, with scattered falls spreading north. South Island: Rain with heavy falls in the west, easing to showers later. Scattered falls elsewhere clearing, but isolated showers linger in the south.



Issued: 1030hrs 11 Oct 2023

Authorised by: [REDACTED] – Watch Leader

Next update: 1030hrs 12 Oct 2023

Executive Summary

- Strong wind watches are in force for Canterbury, Otago, Fiordland, Southland and Stewart Island today.
- There is a moderate chance of thunderstorms for Gisborne, Hawke's Bay and Bay of Plenty.

NEMA Operational Status

Operational Activity

- NCC is at Mode 1 (MAR Centre Monitoring).

On-Call Roster

Director	[REDACTED]
National Controller	[REDACTED]

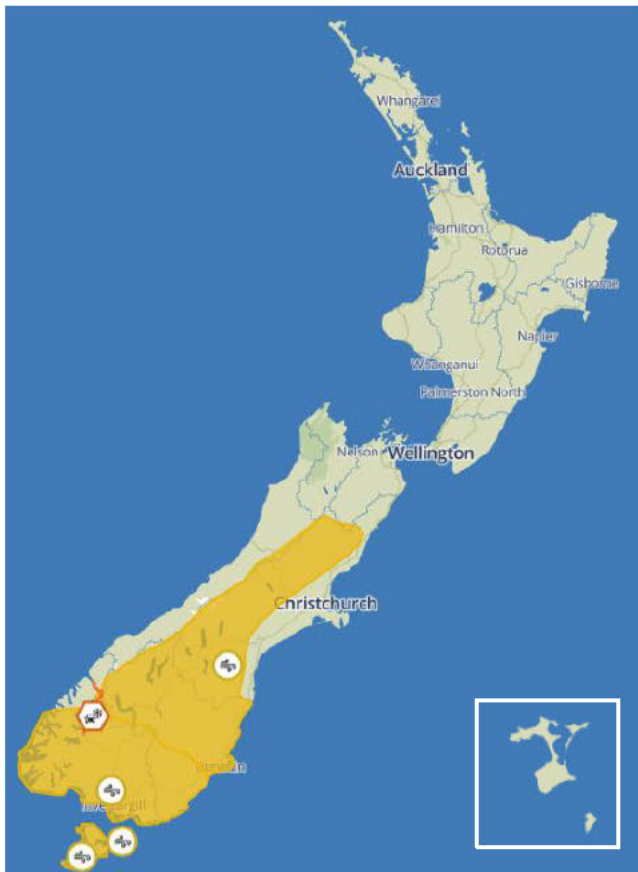
Response Manager	[REDACTED]
Activation Coordinator	[REDACTED]

PIM	[REDACTED]
REMA North	[REDACTED]
REMA South	[REDACTED]

Response Activity

Nothing to report.

Weather and Climate



Current Weather

A trough will cross the South Island during today and tomorrow forcing a strong, cool west to northwest flow.

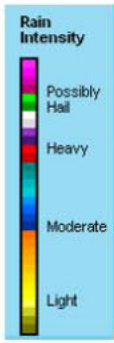
A strong wind watch is in force for Canterbury High Country, and Otago excluding Clutha from 1900hrs today to 0900hrs tomorrow morning. A strong wind watch is also in force for Southern Fiordland, Southland and Clutha, including Stewart Island from 1400hrs tomorrow to 0000hrs Thursday.

A road snowfall warning will be in effect in Milford Road SH94 from 1600hrs today through to 2000hrs.

Accurate from MetService as at 0930hrs today

Prepared by the NEMA Monitoring, Alerting and Reporting Centre to provide awareness that supports informed decision making. Any questions, comments or contributions should be addressed to: mar@nema.govt.nz.

METSERVICE – MODELLED FORECAST FIELDS – RAIN



Wednesday 11 October 2023 1800hrs



Thursday 12 October 2023 0000hrs

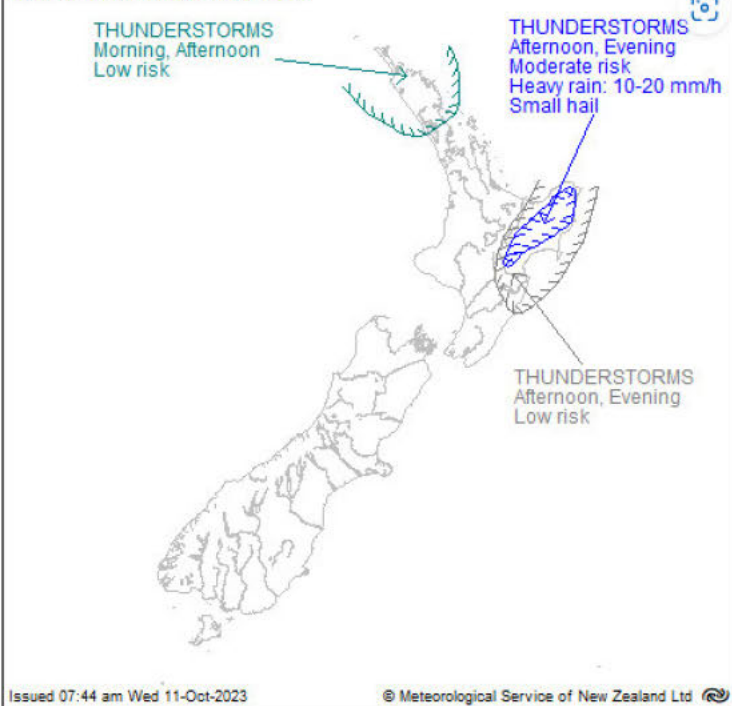


Thursday 12 October 2023 0600hrs



Thursday 12 October 2023 1200hrs

Valid to Midnight Wed 11-Oct-2023



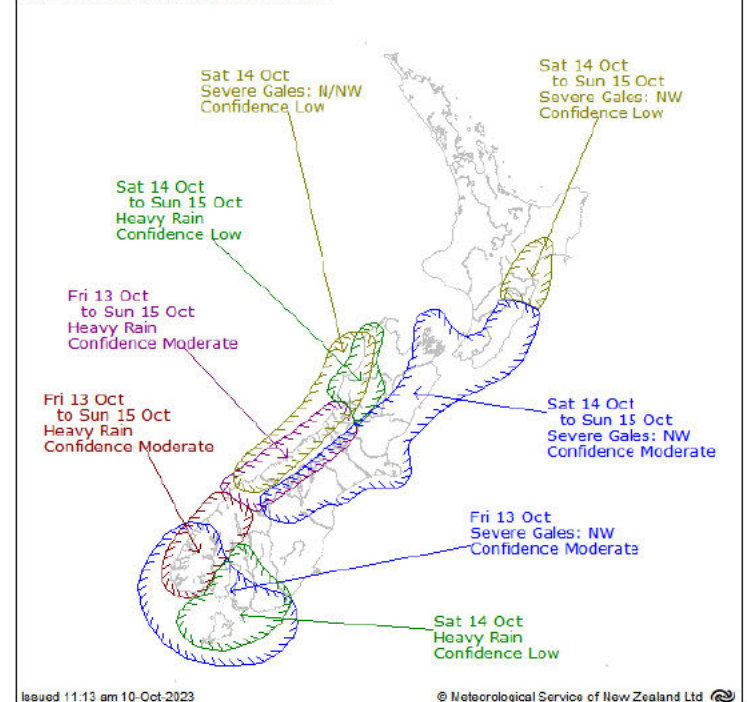
Thunderstorm Outlook

There is moderate risk of thunderstorms about inland areas of Gisborne and northern Hawke's Bay, also the far east of Bay of Plenty.

There is low risk of thunderstorms about Northland this morning, and early this afternoon in eastern areas.

There is also low risk of thunderstorms about eastern Bay of Plenty, Taupō and Taihape, as well as Gisborne and Hawke's Bay during the afternoon and evening.

Valid Thu 12-Oct-2023 through Sun 15-Oct-2023



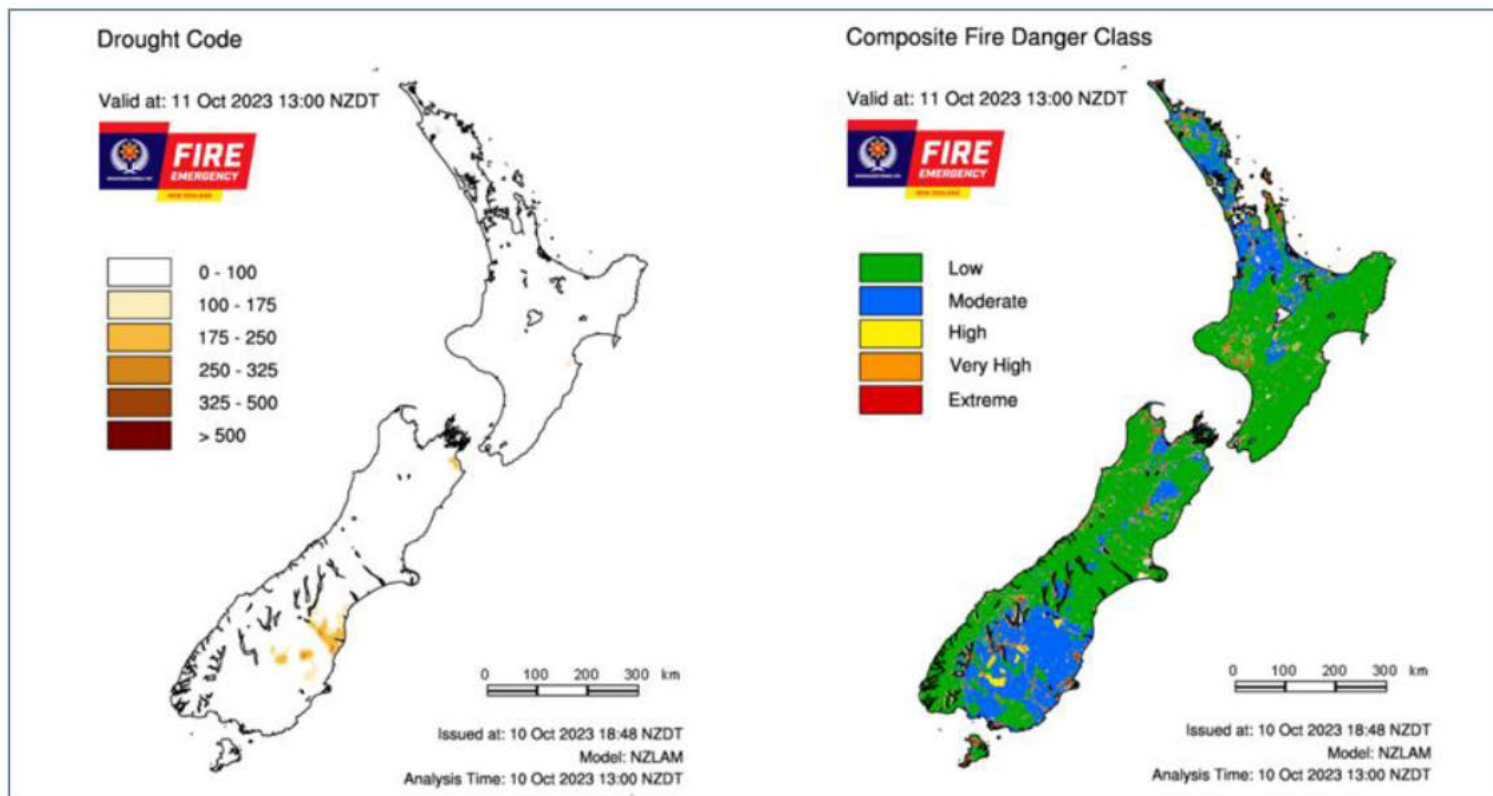
Severe Weather Outlook

A west to northwest flow will impact New Zealand from Thursday to Sunday, with embedded fronts moving over the country during the weekend. These fronts are expected bring periods of heavy rain to the western and possibly southern South Island.

There is moderate confidence that rainfall amounts will meet warning level in Westland, Fiordland and the headwaters of western Southland, Otago and Canterbury (near the main divide) from late Friday through to Sunday.

There is moderate confidence of severe gale winds about exposed parts of southern Fiordland, Southland and Clutha on Friday, and exposed parts of Canterbury, Marlborough, Wellington and Wairarapa (including the Tararua District) on Saturday and Sunday.

Fire and Drought Risk



Source: [NIWA Fire Weather](#)

Geological

Volcanic Activity (Level 1 and above)

Volcano	Level	Volcanic Activity	Activation Code
Whakaari/ White Island	2	Moderate to heightened volcanic unrest	Yellow
Ruapehu	1	Minor volcanic unrest	Green

GNS Alert Levels guide visit: <https://www.geonet.org.nz/about/volcano/va/>

GNS Aviation Colour Codes visit: <https://www.geonet.org.nz/volcano/acc>

Other Events

Nothing to report.

Media

Ash buried in Antarctica puts date on Taupō super-volcano's last big blow

Ash found buried deep in Antarctic ice has highlighted the massive eruptive power of New Zealand's best-known super-volcano - while also helping scientists refine the date of Taupō's most recent big blow.

[NZ Herald](#)

Glacial lake outburst floods in Alaska and the Himalayas show evolving hazards in a warming world

Glacier-dammed lakes like this are abundant in Alaska. They form when a side valley loses its ice faster than the main valley, leaving an ice-free basin that can fill with water. These lakes may remain stable for years, but often they reach a tipping point, when high water pressure opens a channel underneath the glacier.

[PreventionWeb](#)