

Scenario 1; High Infill, Low Greenfields (Indicated preferred option):

- No Southern Growth Area
- No Gillespies.

Scenario 2; Low Infill, High Greenfields:

- Half (approximately) the infill rate of Scenario 1
- All greenfield developments included.

Scenario 3; Low Infill, High Greenfields:

- Identical to Scenario 2, but St Pats & Southern Growth Area start development 4 years earlier.

Table 1: Dwelling assumptions by key development area and Scenario

Greenfield Projects:	Capacities:	Scenario 1 Start Year	Scenario 1 End Year	Scenario 2 Start Year	Scenario 2 End Year	Scenario 3 Start Year	Scenario 3 End Year
Trentham PDA	860	2028	2032	2028	2032	2028	2032
St Patricks	600	2030	2037	2030	2037	2026	2033
Kingsley Heights	250	2032	2036	2032	2036	2032	2036
Canon Point	400	2029	2036	2029	2036	2029	2036
Gabites	220	2025	2034	2025	2034	2025	2034
Southern Growth Area	1500	x	x	2030	2053	2026	2049
Gillespies	1000	x	x	2034	2053	2034	2053

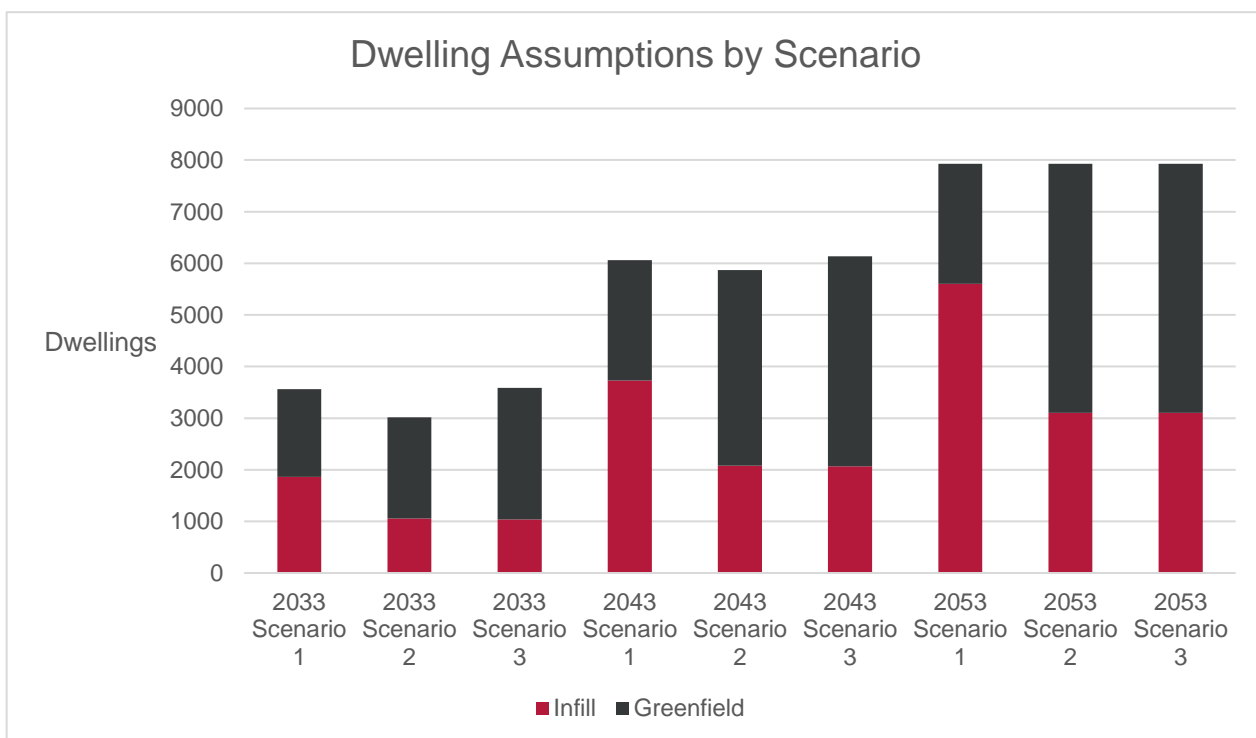


Figure 1: Dwelling assumptions over time, by Scenario

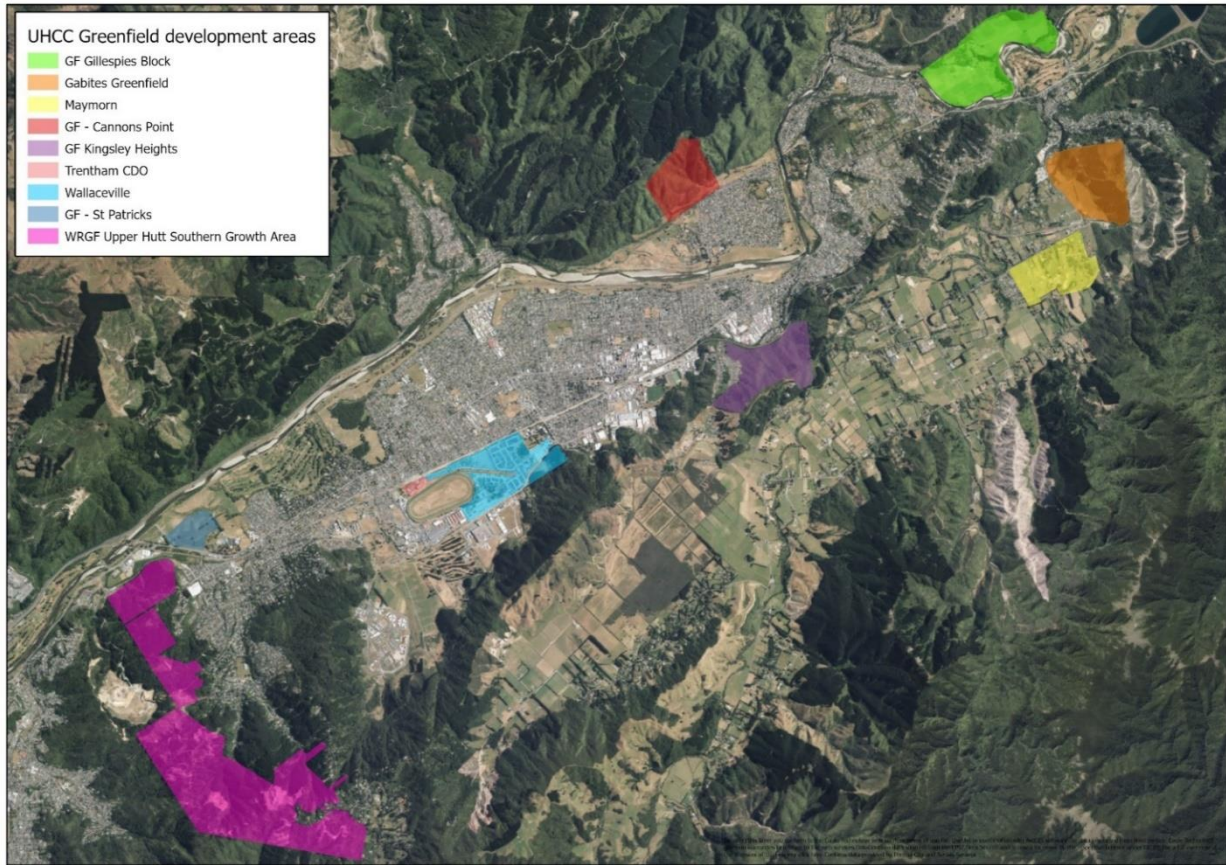


Figure 2: Growth locations

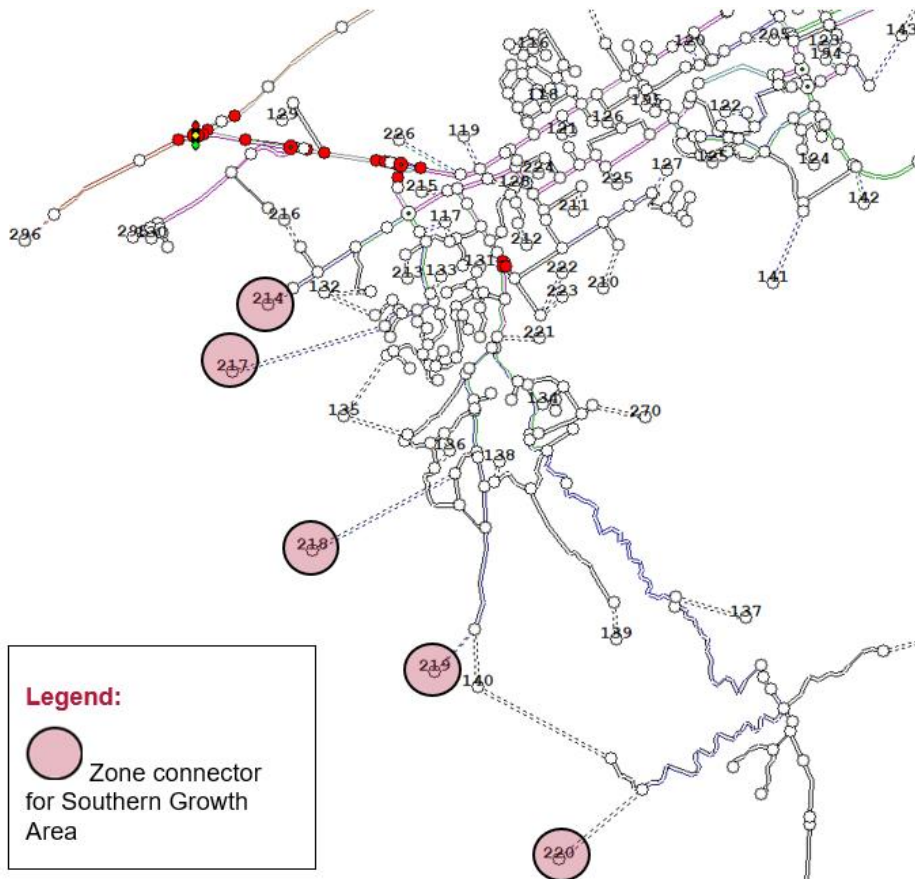


Figure 3: TRACKS model network, showing zone connectors for Southern Growth Area