

Document 1

From: Shelley Govier
Sent: Wednesday, 17 August 2022 3:44 pm
To: 9(2)(a); Jay Barr
Cc: Alana McCorry; Kathryn Yorke; 9(2)(a)
Subject: Rewa Rewa School growth

Hi 9(2)(a) and Jay,

We just had a meeting about Rewa Rewa School and their growing roll. They have RTLB on site as we know and a huge amount of money was spent on reconfiguring space for them back when the school had space to accommodate them. Alana let us know that Tairangi School is the new Lead for RTLB so we will see what they decide to do about any relocations. We allocated roll growth to Newlands School in preparation for growth in the catchment. There is capacity in the network so we will first need to do an enrolment scheme amendment to help them control their enrolments. 9(2)(a) can we please have a look and see if it would be possible to do this one in isolation to speed up the process – rather than doing amendments for all these schools together? I know that you have already had a look at these overlaps.

Jay, please would you set up a time for you and I to go out and have a chat with them about shrinking their scheme?

Many thanks,
Shelley.

Shelley Govier | Lead Advisor Network
Te Mahau | Te Tai Runga

DDI +6444394647 | 9(2)(a)
Lower Hutt Office

[education.govt.nz](https://www.education.govt.nz)

He mea tārai e mātou te mātauranga kia rangatira ai, kia mana taurite ai ōna huanga
We shape an education system that delivers equitable and excellent outcomes



From: Shelley Govier
Sent: Tuesday, 13 September 2022 9:31 am
To: Jan Otene
Cc: Jay Barr; Kathryn Yorke
Subject: RE: Rewa Rewa school request
Attachments: RewaRewaSchoolSDMarch2022.png

Kia ora Jan and Naomi,

Thanks for having Jay and I on Thursday to talk about your growing school roll. Please see information below for your board meeting tonight.

When a school is starting to get overcrowded, we implement an enrolment scheme to manage the number of enrolments. We amend the zone as and when needed. Sometimes it needs to be bigger to incorporate new housing developments for example and sometimes it needs to shrink in order to manage further growth.

A property solution is the last option as we consider capacity across a network of schools and not each school in isolation.

We appreciate that your roll has grown. However, we have space across the Newlands cluster of schools and by amending enrolment schemes we can make sure that we have the right number of students in each scheme. There are no major housing developments in your zone which would lead to an influx of students long term. Reducing the overlap with Newlands School would enable you to manage numbers without becoming more overcrowded.

We would also expect that there would be no places offered for out of zone students.

Subject to Ministry consent, a school can use board funding to buy or build additional property. The consent criteria is explained in detail on our website here <https://www.education.govt.nz/school/funding-and-financials/funding/board-funding-for-property-projects/> but in summary, requires consideration of educational benefits, network criteria, financial status (for both the upfront costs, and ongoing costs i.e. maintenance, insurance etc), and property standards i.e. the building must be fit for purpose, meet Ministry design standards (and if a relocatable building, not new construction, must not contain asbestos).

In terms of a footprint increase, generally an increase to footprint is a response to roll growth (if property is determined as the most appropriate solution). Footprint extensions to create breakout space (directly off teaching spaces) can be considered as a Priority 3 5YA project, subject to first addressing (health and safety/infrastructure priorities) and availability of 5YA funding.

As requested we have included a dot map showing the student distribution for your school.

Ngā mihi,
Shelley.

Shelley Govier | Lead Advisor Network
Te Mahau | Te Tai Runga
DDI +6444394647 | Mobile 9(2)(a)

From: Jan Otene <jan.otene@rewarewa.school.nz>
Sent: Friday, 9 September 2022 12:24 p.m.

To: Shelley Govier <Shelley.Govier@education.govt.nz>

Subject: Rewa Rewa school request

Kia ora Shelley

Thank you once again for making the time to come and meet with me @ Rewa Rewa school. It is nice to be able to put a face to the name!

I tried to send an email to you earlier today but unfortunately Jay had given me the incorrect wording - hopefully this one gets through to you now.

I have attached a letter on behalf of our board and they would really appreciate it if you had the time to read this today as we have a couple of requests to ask of you.

Ngā mihi

Jan

--

Jan Otene

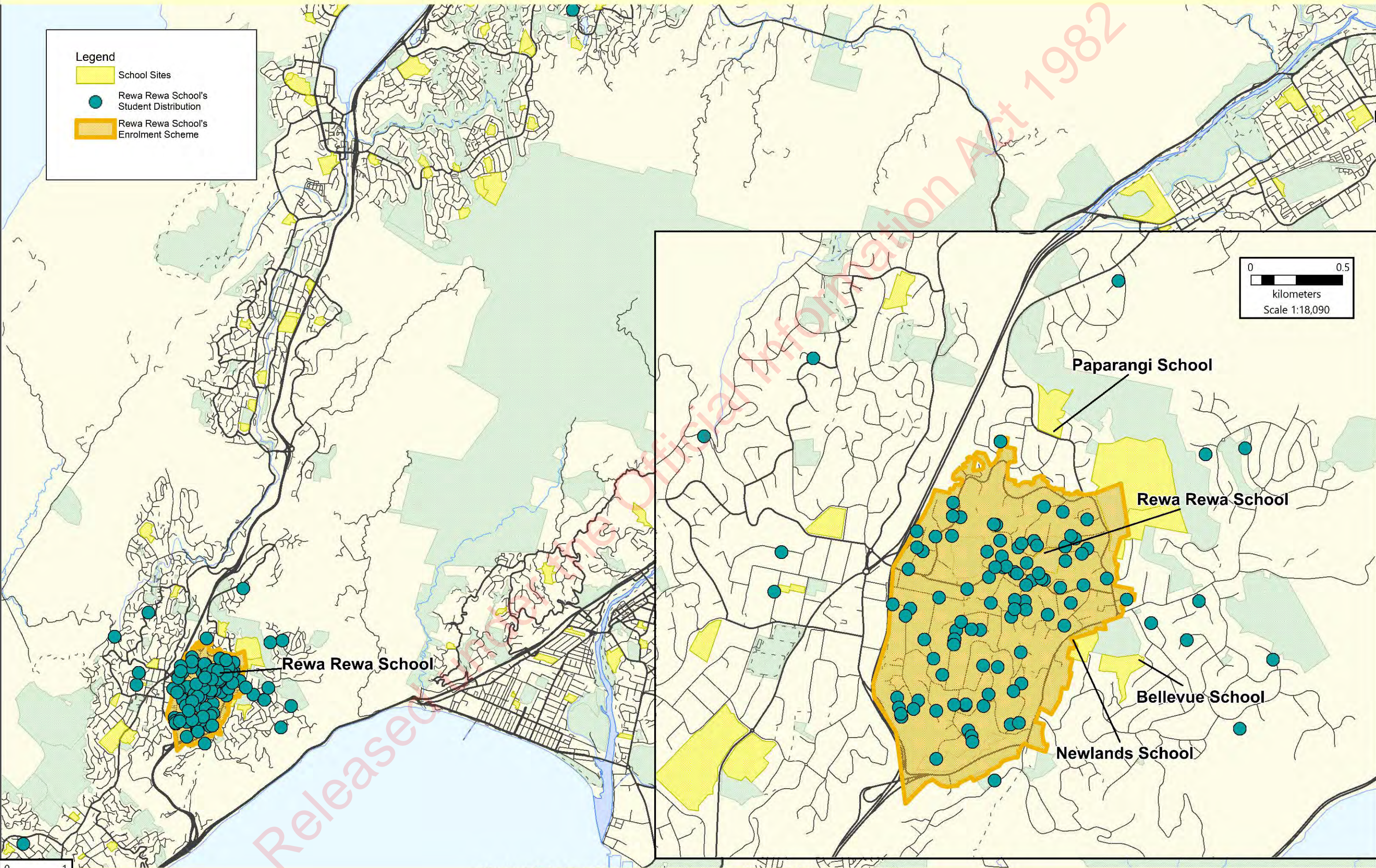
Principal

Rewa Rewa School

Newlands

Released under the Official Information Act 1982

Rewa Rewa School's Student Distribution



Student data from March 2022 roll returns (Printed September 2022)
Land information sourced from LINZ data.
Crown and Critchlow Copy Right Reserved.

0 1
kilometers
Scale 1:58,350

Document 3

From: Sonia Dolan
Sent: Thursday, 29 June 2023 2:57 pm
To: Kathryn Yorke; Kate Aldworth; Jay Barr
Cc: Te Rangipai Renata
Subject: Network response - Newlands Cluster schools questions

Kia Ora Koutou

Here is the network response;

Q3 By reducing our roll and zone, what evidence does the Ministry have that this decision will have a positive effect on the long term viability and effectiveness of our school and its community?

One of the Ministry's roles is to manage the network of schools. When the Ministry or a school board becomes concerned about a school's roll, capacity and the potential for overcrowding, an enrolment scheme must be considered as a response to growth if a school doesn't already have one.

Across the Newlands cluster of schools some schools are experiencing decline in their roll and some are experiencing growth in their roll. The ones that are experiencing roll growth are also getting full as far as their utilisation and this will mean that some schools more than others are reaching their full capacity.

The first steps when the school is at risk of overcrowding or the likelihood of overcrowding then an amendment to the enrolment scheme is recommended to ensure space is provided for in zone students and for the local community. If an enrolment scheme is implemented for a State school, the Secretary may, at the same time, amend the enrolment scheme of any nearby state school that has one, to take into account the change in the first school's enrolment scheme. The process for amending an enrolment scheme is the same as the process for developing a new enrolment scheme.

Further the network team is looking at the long term roll growth for the entire Newlands Cluster and this will be up to 2048. Once this has been completed this will be shared with the Newlands School cluster

We will also provide a home zone map of the entire Newlands Cluster of schools and this will be provided in term 3.

Q 4 Has the Minister of Education given the Ministry of Education any direction with regard to changing zone sizes in the Newlands area?

As there are new powers under the Education and Training Act 2020 then this gave the Ministry of Education the authority to consult with schools to review Enrolment zones. As a result of this change of law, the Minister of Education does not get involved in operational matters. To this date we are not aware of the Minister getting involved with changing the zone sites for the Newlands cluster school area

Nga Mihi

Sonia Dolan | Lead Advisor Network
Te Mahau | Te Tai Runga

DDI +6444395424 | Mobile 9(2)(a)

From: Kathryn Yorke <Kathryn.Yorke@education.govt.nz>
Sent: Thursday, 29 June 2023 12:23 pm
To: Kate Aldworth <Kate.Aldworth@education.govt.nz>; Jay Barr <Jay.Barr@education.govt.nz>; Sonia Dolan <Sonia.Dolan@education.govt.nz>
Cc: Te Rangipai Renata <TeRangipai.Renata@education.govt.nz>
Subject: RE:

Kia ora Kate, Jay, Sonia

I don't recall Q4 being asked on the day. Q1 we couldn't really understand what they were asking, so Damian suggested we'd take that one away and come back with a response.

For Q1, we could use the below/refer them to our Te Haratau programme (which is how property is working towards measuring the performance of teaching spaces, but this doesn't account for the teaching/learning practices that are taking place within the school – it seeks to assess that we have the right physical environment that will contribute to good learning outcomes), not sure if that's what they mean though....

"We are in the process of implementing the Te Haratau programme. Te Haratau is a model of data collection that seeks to assess the fitness for purpose of learning environments across three areas – condition, fitness for purpose and operational efficiency. More information on this programme is available on our website here <https://www.education.govt.nz/our-work/changes-in-education/te-haratau/>. Implementation is aligned to when a school is due to complete their next 10 year property plan, for Rewa Rewa School this process will begin late 2024/early 2025, to inform the 10 year property plan to take effect 1 July 2025".

For Q2: We use the School Property Guide (SPG) calculator to determine space requirements at schools. This is explained in detail on our website <https://www.education.govt.nz/school/property-and-transport/property-planning/space-entitlement/>.

Happy to chat through these two if useful.

Thanks,

Kathryn Yorke | Infrastructure Manager
Te Pou Hanganga, Matihiko | Infrastructure & Digital
DDI +6444394627 | Mobile 9(2)(a)

From: Kate Aldworth <Kate.Aldworth@education.govt.nz>
Sent: Thursday, 29 June 2023 11:24 am
To: Jay Barr <Jay.Barr@education.govt.nz>; Sonia Dolan <Sonia.Dolan@education.govt.nz>
Cc: Te Rangipai Renata <TeRangipai.Renata@education.govt.nz>; Kathryn Yorke <Kathryn.Yorke@education.govt.nz>
Subject: RE:

How are we tracking with this information? The school have asked for a response to their four questions below before COP tomorrow. I understand from Damian that 3 of these questions were answered at the meeting on Monday night – the first question was not so we need to be sure the answers to questions 2-4 are the same as

the messaging given on Monday night. Because I was not there on Monday night I need some support with these questions please.

Jay is drafting the response so any information can be sent to him please.

Ngā mihi

Kate

Kate Aldworth | Manager Integrated Services – Wellington North, Tawa and Porirua
Te Mahau | Te Tai Runga

DDI +6444634820 | Mobile 9(2)(a) [REDACTED]
Lower Hutt Office

temahau.govt.nz | education.govt.nz

From: Jay Barr <Jay.Barr@education.govt.nz>
Sent: Wednesday, 28 June 2023 10:59 am
To: Sonia Dolan <Sonia.Dolan@education.govt.nz>
Cc: Te Rangipai Renata <TeRangipai.Renata@education.govt.nz>; Kate Aldworth <Kate.Aldworth@education.govt.nz>; Kathryn Yorke <Kathryn.Yorke@education.govt.nz>
Subject: FW:

Kia ora Sonia,

Please see Damian's email below. Can you please provide what info you can for the questions?

Some urgency would be good please as a meeting with the school, Kate, and Kathryn has already been set.

Thanks in advance 😊

Jay Barr | Senior Adviser
Te Mahau | Te Tai Runga
DDI +6448160081 | Mobile 9(2)(a) [REDACTED]

From: Damian Hepi-Te Huia <Damian.HepiTeHuia@education.govt.nz>
Sent: Wednesday, 28 June 2023 10:23 am
To: Kate Aldworth <Kate.Aldworth@education.govt.nz>; Jay Barr <Jay.Barr@education.govt.nz>
Subject: FW:

Mōrena kouotu..

FYI Pātai from Rewarewa regarding Tuesday nights cluster hui at Newlands Intermediate.

He au mihi

Damian Hepi-Te Huia | (Acting) Manager Integrated Services
Te Mahau | Te Tai Runga
DDI +6444637532

From: Naomi Godfrey <naomi.godfrey@rewarewa.school.nz>
Sent: Wednesday, 28 June 2023 9:49 am
To: Damian Hepi-Te Huia <Damian.HepiTeHuia@education.govt.nz>
Cc: Kate Aldworth <Kate.Aldworth@education.govt.nz>
Subject:

You don't often get email from naomi.godfrey@rewarewa.school.nz. [Learn why this is important](#)

Kia ora Damian

Thank you for attending the TKoH cluster meeting on Monday evening due to Kate Aldworth being unable to attend at short notice. 9(2)(a)

We appreciate the effort that the Ministry Network team made to meet with our school boards and principals so that we could hear the ministry's overview for all of the kura within Newlands.

Below is the question that our board asked of the panel, which you then asked if you could take back to your team Damian for a response. Like you, our Board left the meeting with queries unanswered so we have also included these in this correspondence with you, for further clarification.

Our questions are:

Q 1 In what way does the MOE assess the effectiveness and capabilities of classroom learning areas against school purposes?

Q2 What formula does the ministry use to determine the number of classrooms needed to meet learning space capacity in a primary school?

Q3 By reducing our roll and zone, what evidence does the Ministry have that this decision will have a positive effect on the long term viability and effectiveness of our school and its community?

Q 4 Has the Minister of Education given the Ministry of Education any direction with regard to changing zone sizes in the Newlands area?

As our School Board will be meeting these members of the network team very soon, we would appreciate having a response to these questions from you, prior to the upcoming holidays.

Thank you for your time Damian.

Ngā mihi

Naomi Godfrey Presiding Member
pp Rewa Rewa School Board

Document 4

From: Sonia Dolan
Sent: Tuesday, 4 July 2023 1:14 pm
To: Kate Aldworth; Steve Turrell; Kathryn Yorke; Te Rangipai Renata
Cc: Di Drake; Damian Hepi-Te Huia; Carey Clark
Subject: Newlands Cluster Hui - action points from last hui

Kia Ora team

The data provided from my previous email(s) was the Newlands Cluster roll growth predictions as requested by all of the schools present in the Newlands cluster.

In summary, the action points from the previous hui (dated 26th June 2023) were;

- 1) To share the roll growth data for up to 2048 for all of the schools (primary, intermediate and secondary) in the Newlands Cluster
- 2) Enrolment schemes – We want to get the balance right between resources and investment in areas of growth, and understand possible causes of enrolments slowing down in other areas. An amendment to any of the enrolment schemes might help reduce pressure on rolls which are at capacity and these changes will ensure there will be no future overcrowding.
- 3) To look at the enrolment schemes to see if any changes are required to manage the growth. As such a programme will need to put in place with the biggest priority at this point to roll out a change with Rewa Rewa school (reduction of their zone) and with Newlands and/or Paparangi school to increase their zones/

Nga Mihi

Sonia Dolan | Lead Advisor Network
Te Mahau | Te Tai Runga

DDI +6444395424 | Mobile 9(2)(a) [REDACTED]

From: Kate Aldworth <Kate.Aldworth@education.govt.nz>
Sent: Friday, 30 June 2023 3:02 pm
To: Sonia Dolan <Sonia.Dolan@education.govt.nz>; Steve Turrell <Steve.Turrell@education.govt.nz>; Di Drake <Di.Drake@education.govt.nz>
Cc: Kathryn Yorke <Kathryn.Yorke@education.govt.nz>; Te Rangipai Renata <TeRangipai.Renata@education.govt.nz>
Subject: RE: Rewa Rewa School Meeting

Kia ora koutou

For the 18 July meeting Kathryn and I need a steer clear on the updated School Utilisation Report (based on July return) and the Roll Projection Report (based on Census 2021 data). Is the data attached what we can share with the Presiding Member before the meeting or do we need to use data specific to Rewa Rewa School – there seems to be some confusion on this.

We need to figure out who will be able to do the enrolment scheme amendment too – would be interesting to have an idea of how drastic or not that might actually be and what difference we'd be expecting that to make. Kathryn and I think they'll be wanting to get into a lot of detail when we meet on the 18 July.

Ngā mihi nui

Kate

Kate Aldworth | Manager Integrated Services – Wellington North, Tawa and Porirua
Te Mahau | Te Tai Runga

DDI +6444634820 | Mobile 9(2)(a)
Lower Hutt Office

temahau.govt.nz | education.govt.nz

From: Sonia Dolan <Sonia.Dolan@education.govt.nz>

Sent: Friday, 30 June 2023 8:37 am

To: Steve Turrell <Steve.Turrell@education.govt.nz>; Kate Aldworth <Kate.Aldworth@education.govt.nz>; Di Drake <Di.Drake@education.govt.nz>

Cc: Kathryn Yorke <Kathryn.Yorke@education.govt.nz>; Te Rangipai Renata <TeRangipai.Renata@education.govt.nz>

Subject: RE: Rewa Rewa School Meeting

Kia Ora Steve

The Newlands Cluster schools are all in agreement to share the data (Primary schools in Newlands, Newlands Intermediate and Newlands College)

At our last hui as a collective of schools they have requested roll growth projections and so we do need to share this with them going forward.

Nga Mihi

Sonia Dolan | Lead Advisor Network
Te Mahau | Te Tai Runga

DDI +6444395424 | Mobile 9(2)(a)

From: Steve Turrell <Steve.Turrell@education.govt.nz>

Sent: Friday, 30 June 2023 7:55 am

To: Sonia Dolan <Sonia.Dolan@education.govt.nz>; Kate Aldworth <Kate.Aldworth@education.govt.nz>; Di Drake <Di.Drake@education.govt.nz>

Cc: Kathryn Yorke <Kathryn.Yorke@education.govt.nz>; Te Rangipai Renata <TeRangipai.Renata@education.govt.nz>

Subject: RE: Rewa Rewa School Meeting

Please don't share this document with Rewa Rewa as I'm not aware of any sign off yet that allows us to show them other schools data. I can pull out specific Rewa Rewa data into its own document if needed.

Also, I'm not sure if I'm missing something...

"Our roll has grown from 142 (March return) and currently sits at 157"

Why are they still taking enrolments when they are well above capacity already...?

Steve Turrell | Analyst
Te Mahau | Te Tai Runga
DDI +6444631549

From: Sonia Dolan <Sonia.Dolan@education.govt.nz>
Sent: Thursday, 29 June 2023 10:06 pm
To: Kate Aldworth <Kate.Aldworth@education.govt.nz>; Steve Turrell <Steve.Turrell@education.govt.nz>; Di Drake <Di.Drake@education.govt.nz>
Cc: Kathryn Yorke <Kathryn.Yorke@education.govt.nz>; Te Rangipai Renata <TeRangipai.Renata@education.govt.nz>
Subject: RE: Rewa Rewa School Meeting

Kia Ora Koutou

Steve has completed the work (thanks Steve) Attached are the roll growth predictions for all schools

In the short term , we need to look at Rewa Rewa school urgently and a reduction of their enrolment scheme will need to happen ASAP or we will simply need to provide roll growth TS as it looks like they will hit critical capacity by next year 2024

Di Drake has been doing enrolment schemes and she has been working with this school so we need traction on this now that they are talking and engaging with us (in the past they weren't as a result of the strike)

The other schools we need to start to look at a strategy for them going forward in coming months. If we were to change enrolment schemes , then this will need resourcing as I do not have capacity to carry out any duties here and Di Drake will be finishing up her work with what she started with in Feb of this year.

Nga Mihi

Sonia Dolan | Lead Advisor Network
Te Mahau | Te Tai Runga
DDI +6444395424 | Mobile 9(2)(a)

From: Kate Aldworth <Kate.Aldworth@education.govt.nz>
Sent: Thursday, 29 June 2023 4:51 pm
To: Sonia Dolan <Sonia.Dolan@education.govt.nz>; Steve Turrell <Steve.Turrell@education.govt.nz>
Cc: Kathryn Yorke <Kathryn.Yorke@education.govt.nz>
Subject: FW: Rewa Rewa School Meeting

Kia ora Sonia and Steve

Before Kathryn and I agree to the 18 July meeting can we please have assurance that you'll have this data ready for us by 10 July so that we have time to prepare for the meeting?

Ngā mihi

Kate

Kate Aldworth | Manager Integrated Services – Wellington North, Tawa and Porirua
Te Mahau | Te Tai Runga
DDI +6444634820 | Mobile 9(2)(a)
Lower Hutt Office

From: Kathryn Yorke <Kathryn.Yorke@education.govt.nz>
Sent: Thursday, 29 June 2023 4:45 pm
To: Kate Aldworth <Kate.Aldworth@education.govt.nz>
Subject: RE: Rewa Rewa School Meeting

Hi Kate, yes I can make that date work and happy for you to respond.

Will the Sonia/Steve be able to get this stuff they've asked for before then? *"We ask that prior to this meeting you send us the updated School Utilisation Report (based on July return) and the Roll Projection Report (based on Census 2021 data). This new data, as referred to at the meeting 26/06, will help us to move forward with the most accurate data available".*

Thanks,

Kathryn Yorke | Infrastructure Manager
Te Pou Hanganga, Mathiko | Infrastructure & Digital
DDI +6444394627 | Mobile 9(2)(a)

From: Kate Aldworth <Kate.Aldworth@education.govt.nz>
Sent: Thursday, 29 June 2023 4:40 pm
To: Kathryn Yorke <Kathryn.Yorke@education.govt.nz>
Subject: FW: Rewa Rewa School Meeting

Does this date suit you? I can go back to her if you like. 😊

Kate Aldworth | Manager Integrated Services – Wellington North, Tawa and Porirua
Te Mahau | Te Tai Runga
DDI +6444634820 | Mobile 9(2)(a)
Lower Hutt Office

From: Naomi Godfrey <naomi.godfrey@rewarewa.school.nz>
Sent: Wednesday, 28 June 2023 1:44 pm
To: Kate Aldworth <Kate.Aldworth@education.govt.nz>; Kathryn Yorke <Kathryn.Yorke@education.govt.nz>
Subject: Rewa Rewa School Meeting

You don't often get email from naomi.godfrey@rewarewa.school.nz. [Learn why this is important](#)

Kia ora Kate and Kathryn

Thank you for your offer to meet with you both in the first week of term three. Our board and principal look forward to meeting with you to discuss how we can work together to find a successful solution for our zoning and roll growth concerns.

We are available on Tuesday 18 July @ 6.00 pm if you would like to join us at Rewa Rewa school. Please feel free to park in the carpark and then walk through into the quad where we will look out for you on arrival.

This discussion is a matter of some urgency for our board and school community. Our roll has grown from 142 (March return) and currently sits at 157. This roll size, and the skew towards junior students, has meant we have had to transform both our library and our school hall into a teaching space. Our senior students are also in a room that is not fit for purpose. We are keen to reach agreement on a solution for our learners as soon as possible.

We ask that prior to this meeting you send us the updated School Utilisation Report (based on July return) and the Roll Projection Report (based on Census 2021 data). This new data, as referred to at the meeting 26/06, will help us to move forward with the most accurate data available.

If you could please confirm your attendance at this meeting, as soon as possible that would be most appreciated.

Ngā mihi
Naomi Godfrey (Presiding Member)
pp Rewa Rewa School board

Released under the Official Information Act 1982

From: Kathryn Yorke
Sent: Monday, 10 July 2023 9:10 am
To: Sonia Dolan; Te Rangipai Renata; Kate Aldworth
Subject: FW: Rewa Rewa School Meeting
Attachments: Rewa Rewa school Roll projections.docx

Kia ora Sonia

Is the attached Roll Projection Report based on Census 2021 data?

Out of scope [REDACTED], do we have a back up plan on producing some information that Kate and I can table with the school next week? E.g. What would an enrolment scheme amendment look like? What effect do we think this would have? As Sonia has noted, we need to look at Rewa Rewa school urgently as they will hit critical capacity by 2024. A property solution here (landing the 2x short term roll growth classrooms) will take time, and will be complex due to site access constraints.

Also, do we need to take a wider cluster view when we consider our options here?

- Rewa Rewa School host the RTLB service (they occupy 4x teaching spaces)
- Would it be the right long-term outcome for us to relocate the RTLB service?
 - If we return 3 spaces to teaching, and 1 to a better sized library, Rewa Rewa School would then be able to accommodate a roll of circa 200 students
 - What impact would that decision have on the wider cluster?
- The board raised a number of times at our last hui that whilst they are the smallest school in the cluster and they are okay with that, there are operational challenges in running/staffing a school of less than 130. Do we have a view on that? What size should Rewa Rewa School be to support the network and good educational outcomes?

Also, to note: We (Property) are likely going to support demolition of 1 teaching space at Newlands School. This will reduce their teaching space count to 15.

Thanks,

Kathryn Yorke | Infrastructure Manager
Te Pou Hanganga, Mathiko | Infrastructure & Digital
DDI +6444394627 | Mobile 9(2)(a) [REDACTED]

From: Sonia Dolan <Sonia.Dolan@education.govt.nz>
Sent: Tuesday, 4 July 2023 1:21 pm
To: Kate Aldworth <Kate.Aldworth@education.govt.nz>; Steve Turrell <Steve.Turrell@education.govt.nz>; Di Drake <Di.Drake@education.govt.nz>
Cc: Kathryn Yorke <Kathryn.Yorke@education.govt.nz>; Te Rangipai Renata <TeRangipai.Renata@education.govt.nz>
Subject: RE: Rewa Rewa School Meeting

Kia Ora Kate

You have a good point! I assumed that this email was in response to the my last email action points from the last hui

You are right, as this is just a Rewa Rewa school meeting only, I've attached the Rewa Rewa school roll growth predictions only. Please share this document with them

RE enrolment scheme change and the proposal for amendment, yes we need to propose a programme here.

To date Di Drake has been the lead for this school for their enrolment scheme change(s) and so going forward for this hui we need to provide the following talking points for Rewa Rewa school;

- 1) *Enrolment schemes – We want to get the balance right between resources and investment in areas of growth, and understand possible causes of enrolments slowing down in other areas. An amendment to any of the enrolment schemes might help reduce pressure on rolls which are at capacity and these changes will ensure there will be no future overcrowding.*
- 2) *To look at the enrolment schemes to see if any changes are required to manage the growth. As such a programme will need to put in place with the biggest priority at this point to roll out a change with Rewa Rewa school (reduction of their zone) and with Newlands and/or Paparangi school to increase their zones.*
- 3) *We will provide a programme for them of the dates of starting the process and for when the implementation for the change will occur*

Lastly we need to have an internal discussion for resourcing for the proposed enrolment scheme change and implementation roll out.

Nga Mihi

Sonia Dolan | Lead Advisor Network
Te Mahau | Te Tai Runga

DDI +6444395424 | Mobile 9(2)(a)

From: Kate Aldworth <Kate.Aldworth@education.govt.nz>

Sent: Friday, 30 June 2023 3:02 pm

To: Sonia Dolan <Sonia.Dolan@education.govt.nz>; Steve Turrell <Steve.Turrell@education.govt.nz>; Di Drake <Di.Drake@education.govt.nz>

Cc: Kathryn Yorke <Kathryn.Yorke@education.govt.nz>; Te Rangipai Renata <TeRangipai.Renata@education.govt.nz>

Subject: RE: Rewa Rewa School Meeting

Kia ora koutou

For the 18 July meeting Kathryn and I need a steer clear on the updated School Utilisation Report (based on July return) and the Roll Projection Report (based on Census 2021 data). Is the data attached what we can share with the Presiding Member before the meeting or do we need to use data specific to Rewa Rewa School – there seems to be some confusion on this.

We need to figure out who will be able to do the enrolment scheme amendment too – would be interesting to have an idea of how drastic or not that might actually be and what difference we'd be expecting that to make. Kathryn and I think they'll be wanting to get into a lot of detail when we meet on the 18 July.

Ngā mihi nui

Kate

Kate Aldworth | Manager Integrated Services – Wellington North, Tawa and Porirua
Te Mahau | Te Tai Runga

DDI +6444634820 | Mobile 9(2)(a)
Lower Hutt Office

temahau.govt.nz | education.govt.nz

From: Sonia Dolan <Sonia.Dolan@education.govt.nz>

Sent: Friday, 30 June 2023 8:37 am

To: Steve Turrell <Steve.Turrell@education.govt.nz>; Kate Aldworth <Kate.Aldworth@education.govt.nz>; Di Drake <Di.Drake@education.govt.nz>

Cc: Kathryn Yorke <Kathryn.Yorke@education.govt.nz>; Te Rangipai Renata <TeRangipai.Renata@education.govt.nz>

Subject: RE: Rewa Rewa School Meeting

Kia Ora Steve

The Newlands Cluster schools are all in agreement to share the data (Primary schools in Newlands, Newlands Intermediate and Newlands College)

At our last hui as a collective of schools they have requested roll growth projections and so we do need to share this with them going forward.

Nga Mihi

Sonia Dolan | Lead Advisor Network
Te Mahau | Te Tai Runga

DDI +6444395424 | Mobile 9(2)(a)

From: Steve Turrell <Steve.Turrell@education.govt.nz>

Sent: Friday, 30 June 2023 7:55 am

To: Sonia Dolan <Sonia.Dolan@education.govt.nz>; Kate Aldworth <Kate.Aldworth@education.govt.nz>; Di Drake <Di.Drake@education.govt.nz>

Cc: Kathryn Yorke <Kathryn.Yorke@education.govt.nz>; Te Rangipai Renata <TeRangipai.Renata@education.govt.nz>

Subject: RE: Rewa Rewa School Meeting

Please don't share this document with Rewa Rewa as I'm not aware of any sign off yet that allows us to show them other schools data. I can pull out specific Rewa Rewa data into its own document if needed.

Also, I'm not sure if I'm missing something...

"Our roll has grown from 142 (March return) and currently sits at 157"

Why are they still taking enrolments when they are well above capacity already...?

Steve Turrell | Analyst
Te Mahau | Te Tai Runga

DDI +6444631549

From: Sonia Dolan <Sonia.Dolan@education.govt.nz>

Sent: Thursday, 29 June 2023 10:06 pm

To: Kate Aldworth <Kate.Aldworth@education.govt.nz>; Steve Turrell <Steve.Turrell@education.govt.nz>; Di Drake <Di.Drake@education.govt.nz>

Cc: Kathryn Yorke <Kathryn.Yorke@education.govt.nz>; Te Rangipai Renata <TeRangipai.Renata@education.govt.nz>

Subject: RE: Rewa Rewa School Meeting

Kia Ora Koutou

Steve has completed the work (thanks Steve) Attached are the roll growth predictions for all schools

In the short term , we need to look at Rewa Rewa school urgently and a reduction of their enrolment scheme will need to happen ASAP or we will simply need to provide roll growth TS as it looks like they will hit critical capacity by next year 2024

Di Drake has been doing enrolment schemes and she has been working with this school so we need traction on this now that they are talking and engaging with us (in the past they weren't as a result of the strike)

The other schools we need to start to look at a strategy for them going forward in coming months. If we were to change enrolment schemes , then this will need resourcing as I do not have capacity to carry out any duties here and Di Drake will be finishing up her work with what she started with in Feb of this year.

Nga Mihi

Sonia Dolan | Lead Advisor Network
Te Mahau | Te Tai Runga

DDI +6444395424 | Mobile 9(2)(a)

From: Kate Aldworth <Kate.Aldworth@education.govt.nz>

Sent: Thursday, 29 June 2023 4:51 pm

To: Sonia Dolan <Sonia.Dolan@education.govt.nz>; Steve Turrell <Steve.Turrell@education.govt.nz>

Cc: Kathryn Yorke <Kathryn.Yorke@education.govt.nz>

Subject: FW: Rewa Rewa School Meeting

Kia ora Sonia and Steve

Before Kathryn and I agree to the 18 July meeting can we please have assurance that you'll have this data ready for us by 10 July so that we have time to prepare for the meeting?

Ngā mihi

Kate

Kate Aldworth | Manager Integrated Services – Wellington North, Tawa and Porirua
Te Mahau | Te Tai Runga

DDI +6444634820 | Mobile 9(2)(a)
Lower Hutt Office

temahau.govt.nz | education.govt.nz

From: Kathryn Yorke <Kathryn.Yorke@education.govt.nz>

Sent: Thursday, 29 June 2023 4:45 pm

To: Kate Aldworth <Kate.Aldworth@education.govt.nz>

Subject: RE: Rewa Rewa School Meeting

Hi Kate, yes I can make that date work and happy for you to respond.

Will the Sonia/Steve be able to get this stuff they've asked for before then? *"We ask that prior to this meeting you send us the updated School Utilisation Report (based on July return) and the Roll Projection Report (based on Census 2021 data). This new data, as referred to at the meeting 26/06, will help us to move forward with the most accurate data available"*.

Thanks,

Kathryn Yorke | Infrastructure Manager
Te Pou Hanganga, Mathiko | Infrastructure & Digital

DDI +6444394627 | Mobile 9(2)(a)

From: Kate Aldworth <Kate.Aldworth@education.govt.nz>

Sent: Thursday, 29 June 2023 4:40 pm

To: Kathryn Yorke <Kathryn.Yorke@education.govt.nz>

Subject: FW: Rewa Rewa School Meeting

Does this date suit you? I can go back to her if you like. 😊

Kate Aldworth | Manager Integrated Services – Wellington North, Tawa and Porirua
Te Mahau | Te Tai Runga

DDI +6444634820 | Mobile 9(2)(a)
Lower Hutt Office

temahau.govt.nz | education.govt.nz

From: Naomi Godfrey <naomi.godfrey@rewarewa.school.nz>

Sent: Wednesday, 28 June 2023 1:44 pm

To: Kate Aldworth <Kate.Aldworth@education.govt.nz>; Kathryn Yorke <Kathryn.Yorke@education.govt.nz>

Subject: Rewa Rewa School Meeting

You don't often get email from naomi.godfrey@rewarewa.school.nz. [Learn why this is important](#)

Kia ora Kate and Kathryn

Thank you for your offer to meet with you both in the first week of term three. Our board and principal look forward to meeting with you to discuss how we can work together to find a successful solution for our zoning and roll growth concerns.

We are available on Tuesday 18 July @ 6.00 pm if you would like to join us at Rewa Rewa school. Please feel free to park in the carpark and then walk through into the quad where we will look out for you on arrival.

This discussion is a matter of some urgency for our board and school community. Our roll has grown from 142 (March return) and currently sits at 157. This roll size, and the skew towards junior students, has meant we have had to transform both our library and our school hall into a teaching space. Our senior students are also in a room that is not fit for purpose. We are keen to reach agreement on a solution for our learners as soon as possible.

We ask that prior to this meeting you send us the updated School Utilisation Report (based on July return) and the Roll Projection Report (based on Census 2021 data). This new data, as referred to at the meeting 26/06 ,will help us to move forward with the most accurate data available.

If you could please confirm your attendance at this meeting, as soon as possible that would be most appreciated.

Ngā mihi

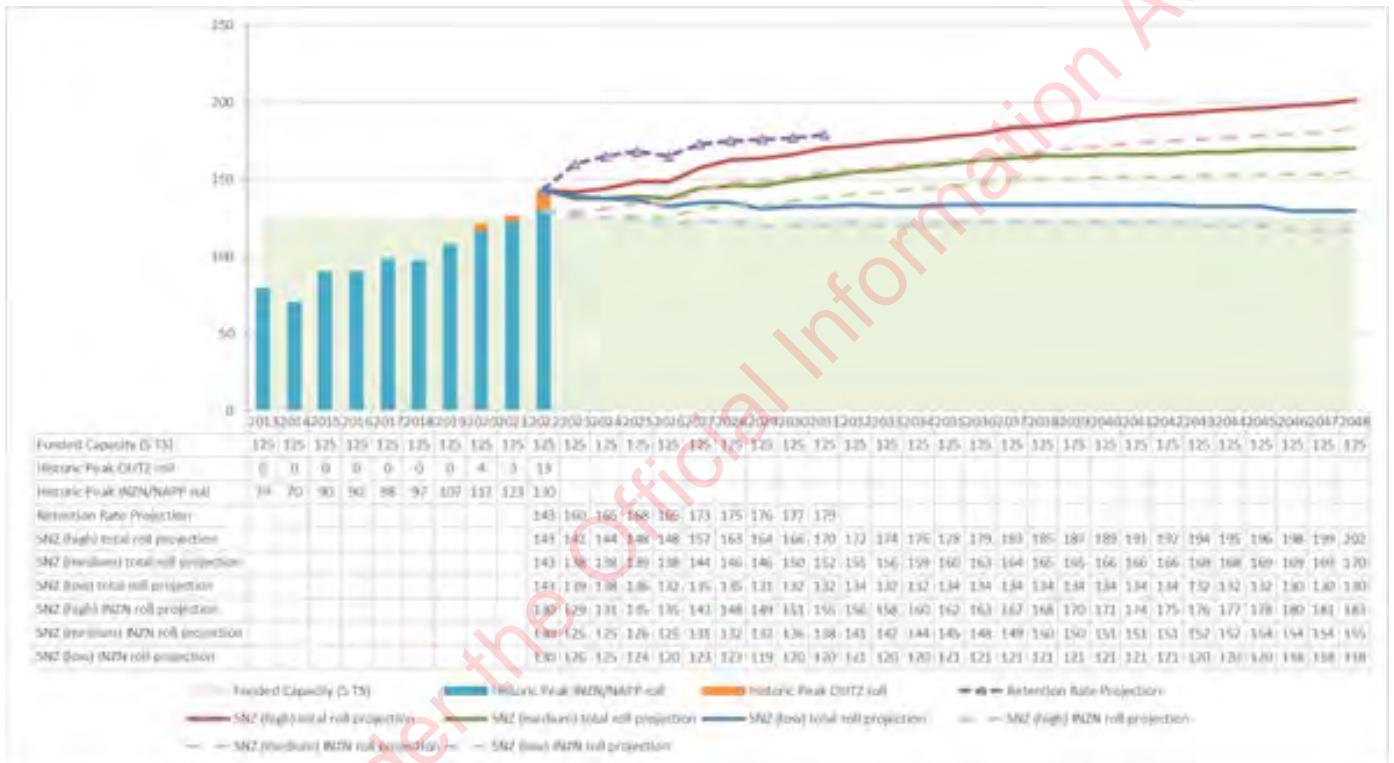
Naomi Godfrey (Presiding Member)

pp Rewa Rewa School board

Released under the Official Information Act 1982

Rewa Rewa Roll Projections – July 2022 Peak

Rewa Rewa School:



Released under the Official Information Act 1982

From: Sonia Dolan
Sent: Tuesday, 11 July 2023 1:56 pm
To: Kathryn Yorke; Te Rangipai Renata; Kate Aldworth
Cc: Steve Turrell; Carey Clark
Subject: RE: Rewa Rewa School Meeting
Attachments: InkedRewa Rewa School & Newlands School ES Overlap.jpg

Kia Ora Kathryn

Thanks for your email

My comments are in red as follows;

Enrolment scheme changes

Out of scope , do we have a back up plan on producing some information that Kate and I can table with the school next week? E.g. What would an enrolment scheme amendment look like? What effect do we think this would have? As Sonia has noted, we need to look at Rewa Rewa school urgently as they will hit critical capacity by 2024. A property solution here (landing the 2x short term roll growth classrooms) will take time, and will be complex due to site access constraints.

Out of scope yes we would like to present an enrolment scheme change. The only problem with this is that there must be a disclaimer that it's a proposal only and yet to have Newlands school input or feedback. Nevertheless it is a starting point in any case.

I enclose the map as an attachment , essentially it's the overlap taken out with both schools – Newlands and Rewa Rewa schools , and that the changes would mean the Overlap would be included for a larger Newlands School enrolment zone only. I will get Steve to do a new proposed ES map and will also ask him to see what reduction it would result in as far as student numbers.

RTL B – long term solution

Also, do we need to take a wider cluster view when we consider our options here?

- Rewa Rewa School host the RTL B service (they occupy 4x teaching spaces)
- Would it be the right long-term outcome for us to relocate the RTL B service?
 - If we return 3 spaces to teaching, and 1 to a better sized library, Rewa Rewa School would then be able to accommodate a roll of circa 200 students
 - What impact would that decision have on the wider cluster?
- The board raised a number of times at our last hui that whilst they are the smallest school in the cluster and they are okay with that, there are operational challenges in running/staffing a school of less than 130. Do we have a view on that? What size should Rewa Rewa School be to support the network and good educational outcomes?

Re RTL B service, Im not SME on educational needs for learning support, however, if we can find an alternative solution then network would support this service elsewhere. I suspect that the enrolment scheme change over time could put the numbers back up bigger than 130 but much smaller than 200. If Newlands school is ok with being bigger in scale I cant see why we would build Rewa Rewa school numbers to 200. Again politically not now but one for a medium to long term push?

Re Board to keep the size at 130 – Yes from a network point of view, we have lots of smaller schools across the Takiwa and we support this. The smaller rolls are a result of challenging topography and we have the smallest school sites in the country as a result. This means that building outwards, upwards or on a new site is not always an option. We need to consider innovative solutions to the challenges we face which may mean doing a build roll for the school that will reflect a smaller roll.

Newlands school

Also, to note: We (Property) are likely going to support demolition of 1 teaching space at Newlands School. This will reduce their teaching space count to 15.

Let me know if you need me to provide input to this and happy to support given its roll decrease trends

Thanks,

Kathryn Yorke | Infrastructure Manager
Te Pou Hanganga, Mathiko | Infrastructure & Digital
DDI +6444394627 | Mobile 9(2)(a)

From: Sonia Dolan <Sonia.Dolan@education.govt.nz>

Sent: Tuesday, 4 July 2023 1:21 pm

To: Kate Aldworth <Kate.Aldworth@education.govt.nz>; Steve Turrell <Steve.Turrell@education.govt.nz>; Di Drake <Di.Drake@education.govt.nz>

Cc: Kathryn Yorke <Kathryn.Yorke@education.govt.nz>; Te Rangipai Renata <TeRangipai.Renata@education.govt.nz>

Subject: RE: Rewa Rewa School Meeting

Kia Ora Kate

You have a good point! I assumed that this email was in response to the my last email action points from the last hui

You are right, as this is just a Rewa Rewa school meeting only, Ive attached the Rewa Rewa school roll growth predictions only. Please share this document with them

RE enrolment scheme change and the proposal for amendment, yes we need to propose a programme here.

To date Di Drake has been the lead for this school for their enrolment scheme change(s) and so going forward for this hui we need to provide the following talking points for Rewa Rewa school;

- 1) *Enrolment schemes – We want to get the balance right between resources and investment in areas of growth, and understand possible causes of enrolments slowing down in other areas. An amendment to any of the enrolment schemes might help reduce pressure on rolls which are at capacity and these changes will ensure there will be no future overcrowding.*
- 2) *To look at the enrolment schemes to see if any changes are required to manage the growth. As such a programme will need to put in place with the biggest priority at this point to roll out a change with Rewa Rewa school (reduction of their zone) and with Newlands and/or Paparangi school to increase their zones.*
- 3) *We will provide a programme for them of the dates of starting the process and for when the implementation for the change will occur*

Lastly we need to have an internal discussion for resourcing for the proposed enrolment scheme change and implementation roll out.

Nga Mihi

Sonia Dolan | Lead Advisor Network
Te Mahau | Te Tai Runga

DDI +6444395424 | Mobile 9(2)(a)

From: Kate Aldworth <Kate.Aldworth@education.govt.nz>

Sent: Friday, 30 June 2023 3:02 pm

To: Sonia Dolan <Sonia.Dolan@education.govt.nz>; Steve Turrell <Steve.Turrell@education.govt.nz>; Di Drake <Di.Drake@education.govt.nz>

Cc: Kathryn Yorke <Kathryn.Yorke@education.govt.nz>; Te Rangipai Renata <TeRangipai.Renata@education.govt.nz>

Subject: RE: Rewa Rewa School Meeting

Kia ora koutou

For the 18 July meeting Kathryn and I need a steer clear on the updated School Utilisation Report (based on July return) and the Roll Projection Report (based on Census 2021 data). Is the data attached what we can share with the Presiding Member before the meeting or do we need to use data specific to Rewa Rewa School – there seems to be some confusion on this.

We need to figure out who will be able to do the enrolment scheme amendment too – would be interesting to have an idea of how drastic or not that might actually be and what difference we'd be expecting that to make. Kathryn and I think they'll be wanting to get into a lot of detail when we meet on the 18 July.

Ngā mihi nui

Kate

Kate Aldworth | Manager Integrated Services – Wellington North, Tawa and Porirua
Te Mahau | Te Tai Runga

DDI +6444634820 | Mobile 9(2)(a)
Lower Hutt Office

temahau.govt.nz | education.govt.nz

From: Sonia Dolan <Sonia.Dolan@education.govt.nz>

Sent: Friday, 30 June 2023 8:37 am

To: Steve Turrell <Steve.Turrell@education.govt.nz>; Kate Aldworth <Kate.Aldworth@education.govt.nz>; Di Drake <Di.Drake@education.govt.nz>

Cc: Kathryn Yorke <Kathryn.Yorke@education.govt.nz>; Te Rangipai Renata <TeRangipai.Renata@education.govt.nz>

Subject: RE: Rewa Rewa School Meeting

Kia Ora Steve

The Newlands Cluster schools are all in agreement to share the data (Primary schools in Newlands, Newlands Intermediate and Newlands College)

At our last hui as a collective of schools they have requested roll growth projections and so we do need to share this with them going forward.

Nga Mihi

Sonia Dolan | Lead Advisor Network
Te Mahau | Te Tai Runga

DDI +6444395424 | Mobile 9(2)(a)

From: Steve Turrell <Steve.Turrell@education.govt.nz>

Sent: Friday, 30 June 2023 7:55 am

To: Sonia Dolan <Sonia.Dolan@education.govt.nz>; Kate Aldworth <Kate.Aldworth@education.govt.nz>; Di Drake <Di.Drake@education.govt.nz>

Cc: Kathryn Yorke <Kathryn.Yorke@education.govt.nz>; Te Rangipai Renata <TeRangipai.Renata@education.govt.nz>

Subject: RE: Rewa Rewa School Meeting

Please don't share this document with Rewa Rewa as I'm not aware of any sign off yet that allows us to show them other schools data. I can pull out specific Rewa Rewa data into its own document if needed.

Also, I'm not sure if I'm missing something...

"Our roll has grown from 142 (March return) and currently sits at 157"

Why are they still taking enrolments when they are well above capacity already...?

Steve Turrell | Analyst
Te Mahau | Te Tai Runga

DDI +6444631549

From: Sonia Dolan <Sonia.Dolan@education.govt.nz>

Sent: Thursday, 29 June 2023 10:06 pm

To: Kate Aldworth <Kate.Aldworth@education.govt.nz>; Steve Turrell <Steve.Turrell@education.govt.nz>; Di Drake <Di.Drake@education.govt.nz>

Cc: Kathryn Yorke <Kathryn.Yorke@education.govt.nz>; Te Rangipai Renata <TeRangipai.Renata@education.govt.nz>

Subject: RE: Rewa Rewa School Meeting

Kia Ora Koutou

Steve has completed the work (thanks Steve) Attached are the roll growth predictions for all schools

In the short term , we need to look at Rewa Rewa school urgently and a reduction of their enrolment scheme will need to happen ASAP or we will simply need to provide roll growth TS as it looks like they will hit critical capacity by next year 2024

Di Drake has been doing enrolment schemes and she has been working with this school so we need traction on this now that they are talking and engaging with us (in the past they weren't as a result of the strike)

The other schools we need to start to look at a strategy for them going forward in coming months. If we were to change enrolment schemes , then this will need resourcing as I do not have capacity to carry out any duties here and Di Drake will be finishing up her work with what she started with in Feb of this year.

Nga Mihi

Sonia Dolan | Lead Advisor Network
Te Mahau | Te Tai Runga

DDI +6444395424 | Mobile 9(2)(a)

From: Kate Aldworth <Kate.Aldworth@education.govt.nz>

Sent: Thursday, 29 June 2023 4:51 pm

To: Sonia Dolan <Sonia.Dolan@education.govt.nz>; Steve Turrell <Steve.Turrell@education.govt.nz>

Cc: Kathryn Yorke <Kathryn.Yorke@education.govt.nz>

Subject: FW: Rewa Rewa School Meeting

Kia ora Sonia and Steve

Before Kathryn and I agree to the 18 July meeting can we please have assurance that you'll have this data ready for us by 10 July so that we have time to prepare for the meeting?

Ngā mihi

Kate

Kate Aldworth | Manager Integrated Services – Wellington North, Tawa and Porirua
Te Mahau | Te Tai Runga

DDI +6444634820 | Mobile 9(2)(a)
Lower Hutt Office

temahau.govt.nz | education.govt.nz

From: Kathryn Yorke <Kathryn.Yorke@education.govt.nz>

Sent: Thursday, 29 June 2023 4:45 pm

To: Kate Aldworth <Kate.Aldworth@education.govt.nz>

Subject: RE: Rewa Rewa School Meeting

Hi Kate, yes I can make that date work and happy for you to respond.

Will the Sonia/Steve be able to get this stuff they've asked for before then? *"We ask that prior to this meeting you send us the updated School Utilisation Report (based on July return) and the Roll Projection Report (based on Census 2021 data). This new data, as referred to at the meeting 26/06, will help us to move forward with the most accurate data available"*.

Thanks,

Kathryn Yorke | Infrastructure Manager
Te Pou Hanganga, Matihiko | Infrastructure & Digital

DDI +6444394627 | Mobile 9(2)(a)

From: Kate Aldworth <Kate.Aldworth@education.govt.nz>

Sent: Thursday, 29 June 2023 4:40 pm

To: Kathryn Yorke <Kathryn.Yorke@education.govt.nz>

Subject: FW: Rewa Rewa School Meeting

Does this date suit you? I can go back to her if you like. 😊

Kate Aldworth | Manager Integrated Services – Wellington North, Tawa and Porirua
Te Mahau | Te Tai Runga

DDI +6444634820 | Mobile 9(2)(a) [REDACTED]
Lower Hutt Office

temahau.govt.nz | education.govt.nz

From: Naomi Godfrey <naomi.godfrey@rewarewa.school.nz>
Sent: Wednesday, 28 June 2023 1:44 pm
To: Kate Aldworth <Kate.Aldworth@education.govt.nz>; Kathryn Yorke <Kathryn.Yorke@education.govt.nz>
Subject: Rewa Rewa School Meeting

You don't often get email from naomi.godfrey@rewarewa.school.nz. [Learn why this is important](#)

Kia ora Kate and Kathryn

Thank you for your offer to meet with you both in the first week of term three. Our board and principal look forward to meeting with you to discuss how we can work together to find a successful solution for our zoning and roll growth concerns.

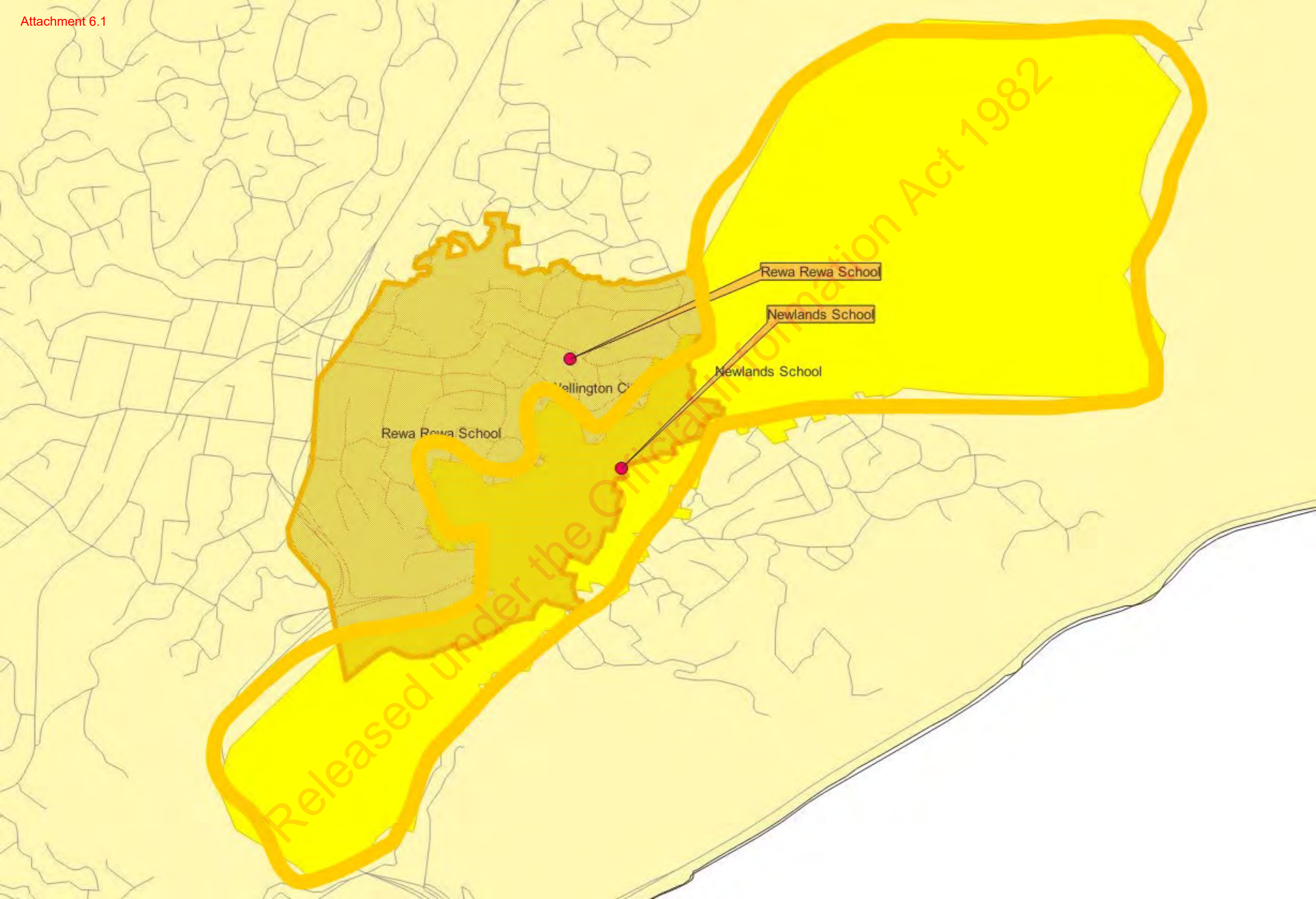
We are available on Tuesday 18 July @ 6.00 pm if you would like to join us at Rewa Rewa school. Please feel free to park in the carpark and then walk through into the quad where we will look out for you on arrival.

This discussion is a matter of some urgency for our board and school community. Our roll has grown from 142 (March return) and currently sits at 157. This roll size, and the skew towards junior students, has meant we have had to transform both our library and our school hall into a teaching space. Our senior students are also in a room that is not fit for purpose. We are keen to reach agreement on a solution for our learners as soon as possible.

We ask that prior to this meeting you send us the updated School Utilisation Report (based on July return) and the Roll Projection Report (based on Census 2021 data). This new data, as referred to at the meeting 26/06, will help us to move forward with the most accurate data available.

If you could please confirm your attendance at this meeting, as soon as possible that would be most appreciated.

Ngā mihi
Naomi Godfrey (Presiding Member)
pp Rewa Rewa School board



Rewa Rewa School

Wellington City

Rewa Rewa School

Newlands School

Newlands School

Released under the Official Information Act 1982

From: Sonia Dolan
Sent: Wednesday, 12 July 2023 11:24 am
To: Kate Aldworth; Kathryn Yorke; Te Rangipai Renata
Cc: Steve Turrell; Carey Clark
Subject: RE: Rewa rewa school - proposed ES change and next steps
Attachments: Rewa Rewa School Proposed ES July 2023 (002).png

Kia Ora Koutou

Thanks Steve for your quick efforts for the Newlands Cluster mahi 😊

Next steps :

- So going forward here is the reduced ES for Rewa Rewa School map. Steve has informed me that it reduces the students by 22. I have to admit it is a paltry number , however, it does mean that the capacity for the school would be reduced to 132 students. With the max built capacity for 125, it would bring the school to a capacity of 105% (ideal is 85%). Currently the school is at 123% capacity
- For future roll predictions, with the downward trends like other schools we may see the numbers plateau , however its difficult to predict this. In any case as Enrolment scheme changes take time to come into effect (1-2 years) then the Short Term Roll growth would bring reprieve of up to 2 classrooms and this would bring them down to 85%.

Nga Mihi

Sonia Dolan | Lead Advisor Network
Te Mahau | Te Tai Runga

DDI +6444395424 | Mobile 9(2)(a) [REDACTED]

From: Steve Turrell <Steve.Turrell@education.govt.nz>
Sent: Wednesday, 12 July 2023 10:31 am
To: Sonia Dolan <Sonia.Dolan@education.govt.nz>
Cc: Kate Aldworth <Kate.Aldworth@education.govt.nz>; Kathryn Yorke <Kathryn.Yorke@education.govt.nz>; Te Rangipai Renata <TeRangipai.Renata@education.govt.nz>
Subject: RE: Rewa rewa school - proposed ES change and map proposal

Steve Turrell | Analyst
Te Mahau | Te Tai Runga
DDI +6444631549

From: Sonia Dolan <Sonia.Dolan@education.govt.nz>
Sent: Wednesday, 12 July 2023 10:17 am

To: Steve Turrell <Steve.Turrell@education.govt.nz>

Cc: Kate Aldworth <Kate.Aldworth@education.govt.nz>; Kathryn Yorke <Kathryn.Yorke@education.govt.nz>; Te Rangipai Renata <TeRangipai.Renata@education.govt.nz>

Subject: RE: Rewa rewa school - proposed ES change and map proposal

9(2)(g)(i)

There is currently a overlap of both zones, as shown by the attached map

9(2)(g)(i)

zone and have no overlap

we just need to reduce the rewa rewa home

Does that make sense ?

Nga Mihi

Sonia Dolan | Lead Advisor Network
Te Mahau | Te Tai Runga

DDI +6444395424 | Mobile 9(2)(a)

From: Steve Turrell <Steve.Turrell@education.govt.nz>

Sent: Wednesday, 12 July 2023 7:51 am

To: Sonia Dolan <Sonia.Dolan@education.govt.nz>

Subject: RE: Rewa rewa school - proposed ES change and map proposal

9(2)(g)(i)

What changes do you want me to make to the Rewa Rewa ES?

Steve Turrell | Analyst
Te Mahau | Te Tai Runga
DDI +6444631549

From: Sonia Dolan <Sonia.Dolan@education.govt.nz>

Sent: Tuesday, 11 July 2023 2:00 pm

To: Steve Turrell <Steve.Turrell@education.govt.nz>

Subject: Rewa rewa school - proposed ES change and map proposal

Importance: High

Hi Steve

Can you please produce a map to indicate a proposed ES change as attached. Newlands school would have the entire overlap area

Can you calculate how many students would drop out of the Rewa rewa school ES area please ?? and how many it would add to Newlands school ES

We need to know that this would have enough students to drop its current (full) capacity for Rewa Rewa school , and not overwhelm Newlands school either

Nga Mihi

Sonia Dolan | Lead Advisor Network
Te Mahau | Te Tai Runga

DDI +6444395424 | Mobile 9(2)(a) [REDACTED]
Lower Hutt Office

education.govt.nz

*He mea tārai e mātou te mātauranga kia rangatira ai, kia mana taurite ai ōna huanga
We shape an education system that delivers equitable and excellent outcomes*

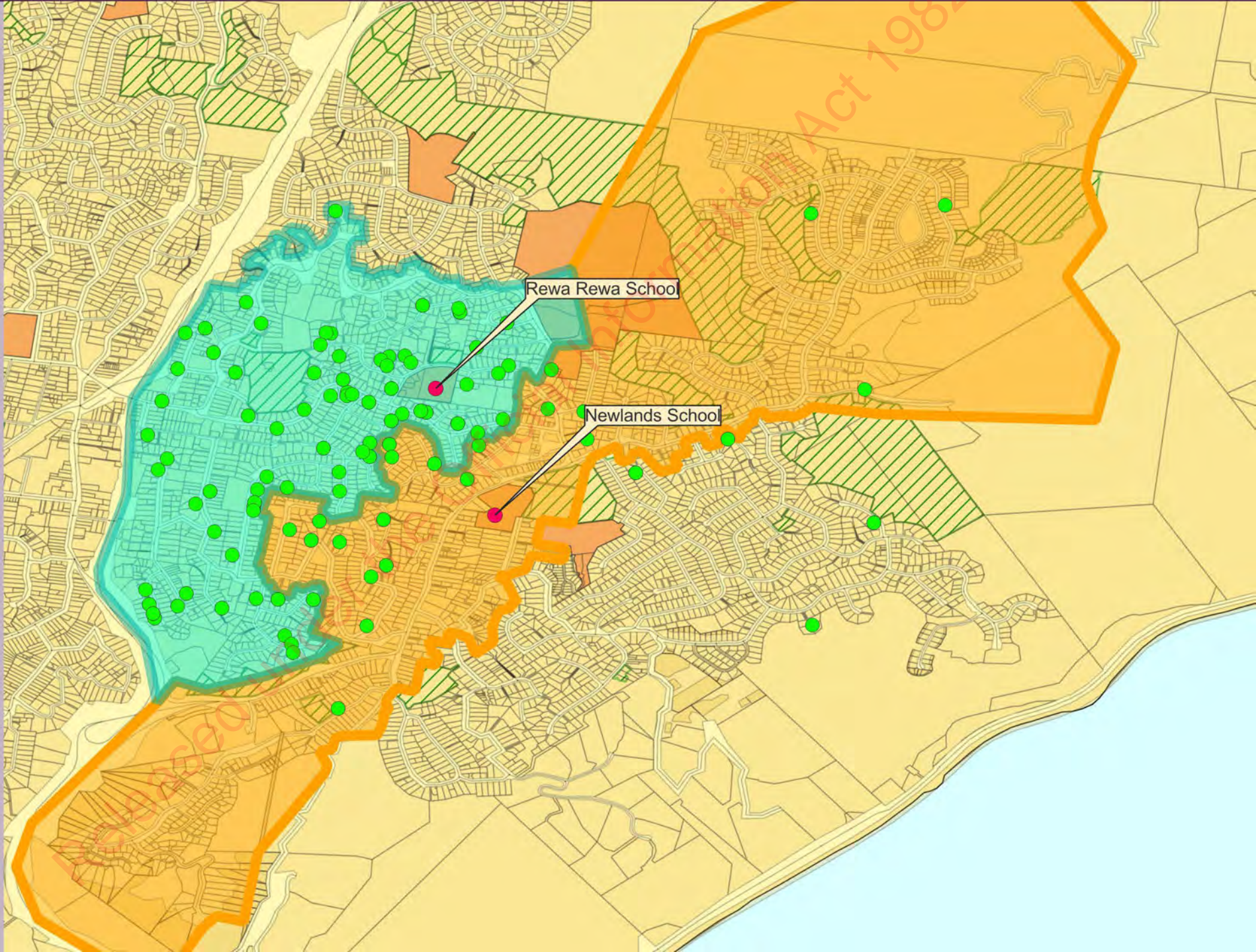


Te Mahau

Released under the Official Information Act 1982

Map Legend:

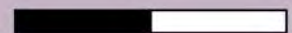
- Rewa Rewa School & Newlands School
- Rewa Rewa Students March 2023
- Rewa Rewa School Proposed ES
- Newlands School ES



Attachment 7.1

Map Scale:

0 250 500 m



Document 8

From: Kathryn Yorke
Sent: Tuesday, 18 July 2023 8:23 am
To: Steve Turrell; Sonia Dolan; Kate Aldworth; Te Rangipai Renata
Cc: Carey Clark
Subject: RE: Rewa rewa school - proposed ES change and next steps

Kia ora All

Thanks for clarifying Steve. Do we have an estimate of how many potential students live in the overlap area? I think we need to be able to tell them this so they can understand why we need to make this change to prevent potential overcrowding.

The students already enrolled would be able to continue to attend as in-zone students wouldn't they, but siblings would be subject to ballot?

Thanks,

Kathryn Yorke | Infrastructure Manager
Te Pou Hanganga, Matihiko | Infrastructure & Digital
DDI +6444394627 | Mobile 9(2)(a) [REDACTED]

From: Steve Turrell <Steve.Turrell@education.govt.nz>
Sent: Tuesday, 18 July 2023 7:50 am
To: Kathryn Yorke <Kathryn.Yorke@education.govt.nz>; Sonia Dolan <Sonia.Dolan@education.govt.nz>; Kate Aldworth <Kate.Aldworth@education.govt.nz>; Te Rangipai Renata <TeRangipai.Renata@education.govt.nz>
Cc: Carey Clark <Carey.Clark@education.govt.nz>
Subject: RE: Rewa rewa school - proposed ES change and next steps

Kia ora Kathryn,

It is the current number of students in that overlap zone that are attending Rewa Rewa. So, there are 22 Students as of March 2023 that live in the overlap zone and go to Rewa Rewa 😊

Regards,

Steve Turrell | Analyst
Te Mahau | Te Tai Runga
DDI +6444631549

From: Kathryn Yorke <Kathryn.Yorke@education.govt.nz>
Sent: Monday, 17 July 2023 4:39 pm
To: Sonia Dolan <Sonia.Dolan@education.govt.nz>; Kate Aldworth <Kate.Aldworth@education.govt.nz>; Te Rangipai Renata <TeRangipai.Renata@education.govt.nz>
Cc: Steve Turrell <Steve.Turrell@education.govt.nz>; Carey Clark <Carey.Clark@education.govt.nz>
Subject: RE: Rewa rewa school - proposed ES change and next steps

Kia ora All

Just wanted to clarify something ahead of the meeting tomorrow - Is the figure of 22 students the number of existing students enrolled at the school that live in the overlap area, or is it the total number of kids living in the overlap area that could potentially enrol?

Thanks,

Kathryn Yorke | Infrastructure Manager
Te Pou Hanganga, Matihiko | Infrastructure & Digital
DDI +6444394627 | Mobile 9(2)(a)

From: Sonia Dolan <Sonia.Dolan@education.govt.nz>
Sent: Wednesday, 12 July 2023 11:24 am
To: Kate Aldworth <Kate.Aldworth@education.govt.nz>; Kathryn Yorke <Kathryn.Yorke@education.govt.nz>; Te Rangipai Renata <TeRangipai.Renata@education.govt.nz>
Cc: Steve Turrell <Steve.Turrell@education.govt.nz>; Carey Clark <Carey.Clark@education.govt.nz>
Subject: RE: Rewa rewa school - proposed ES change and next steps

Kia Ora Koutou

Thanks Steve for your quick efforts for the Newlands Cluster mahi 😊

Next steps :

- So going forward here is the reduced ES for Rewa Rewa School map. Steve has informed me that it reduces the students by 22. I have to admit it is a paltry number , however, it does mean that the capacity for the school would be reduced to 132 students. With the max built capacity for 125, it would bring the school to a capacity of 105% (ideal is 85%). Currently the school is at 123% capacity
- For future roll predictions, with the downward trends like other schools we may see the numbers plateau , however its difficult to predict this. In any case as Enrolment scheme changes take time to come into effect (1-2 years) then the Short Term Roll growth would bring reprieve of up to 2 classrooms and this would bring them down to 85%.

Nga Mihi

Sonia Dolan | Lead Advisor Network
Te Mahau | Te Tai Runga
DDI +6444395424 | Mobile 9(2)(a)

From: Steve Turrell <Steve.Turrell@education.govt.nz>
Sent: Wednesday, 12 July 2023 10:31 am
To: Sonia Dolan <Sonia.Dolan@education.govt.nz>
Cc: Kate Aldworth <Kate.Aldworth@education.govt.nz>; Kathryn Yorke <Kathryn.Yorke@education.govt.nz>; Te Rangipai Renata <TeRangipai.Renata@education.govt.nz>
Subject: RE: Rewa rewa school - proposed ES change and map proposal

Steve Turrell | Analyst
Te Mahau | Te Tai Runga
DDI +6444631549

From: Sonia Dolan <Sonia.Dolan@education.govt.nz>

Sent: Wednesday, 12 July 2023 10:17 am

To: Steve Turrell <Steve.Turrell@education.govt.nz>

Cc: Kate Aldworth <Kate.Aldworth@education.govt.nz>; Kathryn Yorke <Kathryn.Yorke@education.govt.nz>; Te Rangipai Renata <TeRangipai.Renata@education.govt.nz>

Subject: RE: Rewa rewa school - proposed ES change and map proposal

9(2)(g)(i)

There is currently a overlap of both zones, as shown by the attached map

9(2)(g)(i)

zone and have no overlap

Does that make sense ?

Nga Mihi

Sonia Dolan | Lead Advisor Network
Te Mahau | Te Tai Runga

DDI +6444395424 | Mobile 9(2)(a)

From: Steve Turrell <Steve.Turrell@education.govt.nz>

Sent: Wednesday, 12 July 2023 7:51 am

To: Sonia Dolan <Sonia.Dolan@education.govt.nz>

Subject: RE: Rewa rewa school - proposed ES change and map proposal

9(2)(g)(i)

What changes do you want me to make to the Rewa Rewa ES?

Steve Turrell | Analyst
Te Mahau | Te Tai Runga
DDI +6444631549

From: Sonia Dolan <Sonia.Dolan@education.govt.nz>

Sent: Tuesday, 11 July 2023 2:00 pm

To: Steve Turrell <Steve.Turrell@education.govt.nz>

Subject: Rewa rewa school - proposed ES change and map proposal

Importance: High

Hi Steve

Can you please produce a map to indicate a proposed ES change as attached. Newlands school would have the entire overlap area

Can you calculate how many students would drop out of the Rewa Rewa school ES area please ?? and how many it would add to Newlands school ES

We need to know that this would have enough students to drop its current (full) capacity for Rewa Rewa school , and not overwhelm Newlands school either

Nga Mihi

Sonia Dolan | Lead Advisor Network
Te Mahau | Te Tai Runga

DDI +6444395424 | Mobile 9(2)(a)
Lower Hutt Office

education.govt.nz

He mea tārai e mātou te mātauranga kia rangatira ai, kia mana taurite ai ōna huanga
We shape an education system that delivers equitable and excellent outcomes



Te Mahau

Released under the Official Information Act 1982