

**From:** [Erica Andrews](#)  
**To:** [WERE, Georgina \(Georgie\)](#); [alan.kennedy@fireandemergency.nz](mailto:alan.kennedy@fireandemergency.nz); [St John Joelle Fox](#); [Eamon Ginley](#); [rachel.townrow@bdc.govt.nz](mailto:rachel.townrow@bdc.govt.nz); [Bob Dickson](#); [Deborah Wright](#); [Dylan Taylor](#) ([dylan.taylor@westreef.co.nz](mailto:dylan.taylor@westreef.co.nz)); [Mike Duff](#); [Greg Shene](#); [Trevor O'Dea](#) ([trevor.o'dea@fireandemergency.nz](mailto:trevor.o'dea@fireandemergency.nz)); [TROT, Dean](#); [jerry.adams@bathurst.co.nz](mailto:jerry.adams@bathurst.co.nz); [Mayor Jamie Cleine](#); [WCDHB Jason MacAskill](#)  
**Subject:** Emergency Management Team meeting - see below please  
**Importance:** High

---

Hi everyone

I propose we get together to talk about this weather event , potential risks to our communities and advise availability of your liaison over the next few days.

I have doubled up on a couple of reps from some agencies as I am unsure of your staffing and availability, feel free just to send one or many!

Thanks in advance

Erica

**From:** [Erica Andrews](#)  
**To:** [Sean Judd \(sean.judd@bdc.govt.nz\)](mailto:sean.judd@bdc.govt.nz); [Bob Dickson](#) [REDACTED]  
**Subject:** EOC standby roster  
**Date:** Wednesday, 14 July 2021 10:49:46  
**Importance:** High

---

Hi again

Below is the Severe Weather warning that has just been issued by MetService. Some big totals in there! including the coastal amount. Mokihinui, Karamea and Buller rivers will be impacted by this event and we should expect some flooding, slips and other impacts.

**Actions to date:**

- Can confirm Bob is available for first shift as Controller should we need to activate.
- I have scheduled a CDEM team meeting for 1130 this morning to discuss this event

**Actions to be completed:**

**EOC roster from 0800 Friday – 1200 Saturday**

- [REDACTED]
- [REDACTED]
  - [REDACTED]
  - [REDACTED]
  - [REDACTED]
  - [REDACTED]
  - [REDACTED]
  - [REDACTED]
  - [REDACTED]

**Public Information disseminated via Facebook and radio (Erica)**

**Email to Jamie, Sharon, Mike to be sent – will do this once our team meeting is completed (Erica)**

**Email to partner agencies and communities with information (Erica)**

## Severe Weather Warnings

Issued at: 10:12am Wednesday, 14th July 2021

### Heavy Rain Warning for Buller - Orange

*Heavy rain may cause streams and rivers to rise rapidly. Surface flooding and slips are also possible and driving conditions may be hazardous.*

Issued: 10:11am Wednesday, 14th July 2021

Area: Buller

Valid: 8:00pm Thursday to 6:00am Saturday

Expect 200 to 275mm of rain about the ranges, with 150 to 200mm about the coast.

Thunderstorms possible. Peak rates of 20 to 30mm/h expected during Friday evening and Saturday morning.

## Heavy Rain Warning for Westland - Orange

*Heavy rain may cause streams and rivers to rise rapidly. Surface flooding and slips are also possible and driving conditions may be hazardous.*

Issued: 10:11am Wednesday, 14th July 2021

Area: Westland north of the glaciers

Valid: 9:00pm Thursday to 5:00am Saturday

Expect 200 to 250mm of rain about the ranges, with 120 to 150mm about the coast.

Thunderstorms possible. Peak rates of 15 to 25mm/h expected during Friday evening and early Saturday morning.

Thanks E

### **Erica Andrews**

Emergency Management Officer - Buller District

Group Public Information Manager

Tel. 03 744 7338

M: 021 644 625

E: [erica.andrews@wrc.govt.nz](mailto:erica.andrews@wrc.govt.nz)

Website: [www.westcoastemergency.govt.nz](http://www.westcoastemergency.govt.nz)



**From:** [Erica Andrews](#)  
**To:** [bdc.pim](#)  
**Subject:** FW: Fire and Emergency PIM contact details - severe weather event  
**Date:** Friday, 16 July 2021 14:41:13  
**Attachments:** [image001.png](#)

---

**Erica Andrews**

Emergency Management Officer - Buller District  
Group Public Information Manager  
Tel. 03 744 7338  
M: 021 644 625  
E: [erica.andrews@wrc.govt.nz](mailto:erica.andrews@wrc.govt.nz)  
Website: [www.westcoastemergency.govt.nz](http://www.westcoastemergency.govt.nz)



---

**From:** Poole, Michele <Michele.Poole@fireandemergency.nz>  
**Sent:** Friday, 16 July 2021 2:33 PM  
**To:** [REDACTED] Erica Andrews <erica.andrews@wrc.govt.nz>;  
[REDACTED]; media@police.govt.nz; media@nzta.govt.nz;  
Victoria.Hawkins@stjohn.org.nz; Gerard.campbell@stjohn.org.nz  
**Cc:** Glyn Walters <glyn.walters@marlborough.govt.nz>; pim@otagocdem.govt.nz; Katherine Rock [NEMA] <Katherine.Rock@nema.govt.nz>; Anthony Frith (NEMA) <anthony.frith@nema.govt.nz>; [REDACTED] >  
**Subject:** Fire and Emergency PIM contact details - severe weather event

This email is from an external sender. Please be careful with any links or attachments.

Hi all

Just touching base to let you know that Fire and Emergency has activated our RCC in Christchurch to support our activities on the West Coast and Nelson/Tasman.

Please add [media@fireandemergency.nz](mailto:media@fireandemergency.nz) to your distribution list for any comms you're releasing in relation to this storm. [REDACTED]

Ngā mihi  
Michele

Michele Poole  
Senior Regional Comms & Engagement Advisor  
**Te Kei and Te Ihu Regions (South Island)**

M: 027 839 8306

[Michele.Poole@fireandemergency.nz](mailto:Michele.Poole@fireandemergency.nz)

[www.fireandemergency.nz](http://www.fireandemergency.nz)



---

Notice: This email and any attachments may contain information that may be subject to an obligation of confidence or the subject of legal privilege.

If you received it in error:

1. Please let us know immediately by return email and then delete the email and your reply.
2. You must not use, copy or disclose any of the information contained in this email.

There is no warranty that this email is error or virus free.

If this is a private communication, it does not represent the views of the organisation.

**From:** [Erica Andrews](#)  
**To:** [Bob Dickson](#) [REDACTED]  
**Subject:** FW: Severe Weather Warnings : 474709  
**Date:** Wednesday, 14 July 2021 10:13:53

---

**Erica Andrews**

Emergency Management Officer - Buller District  
Group Public Information Manager  
Tel. 03 744 7338  
M: 021 644 625  
E: [erica.andrews@wrc.govt.nz](mailto:erica.andrews@wrc.govt.nz)  
Website: [www.westcoastemergency.govt.nz](http://www.westcoastemergency.govt.nz)



---

**From:** SORT\_MSG@METSERVICE.COM <SORT\_MSG@METSERVICE.COM>  
**Sent:** Wednesday, 14 July 2021 10:12 AM  
**To:** WCRC SWB <WCRC\_SWB@wrc.govt.nz>  
**Subject:** Severe Weather Warnings : 474709

This email is from an external sender. Please be careful with any links or attachments.

## Severe Weather Warnings

Issued at: 10:12am Wednesday, 14th July 2021

### Heavy Rain Warning for Buller - Orange

*Heavy rain may cause streams and rivers to rise rapidly. Surface flooding and slips are also possible and driving conditions may be hazardous.*

Issued: 10:11am Wednesday, 14th July 2021

Area: Buller

Valid: 8:00pm Thursday to 6:00am Saturday

Expect 200 to 275mm of rain about the ranges, with 150 to 200mm about the coast.

Thunderstorms possible. Peak rates of 20 to 30mm/h expected during Friday evening and Saturday morning.

### Heavy Rain Warning for Westland - Orange

*Heavy rain may cause streams and rivers to rise rapidly. Surface flooding and slips are also possible and driving conditions may be hazardous.*

Issued: 10:11am Wednesday, 14th July 2021

Area: Westland north of the glaciers

Valid: 9:00pm Thursday to 5:00am Saturday

Expect 200 to 250mm of rain about the ranges, with 120 to 150mm about the coast.

Thunderstorms possible. Peak rates of 15 to 25mm/h expected during Friday evening and early

Saturday morning.

**From:** [Gavin Gallot](#)  
**To:** [Undisclosed recipients:](#)  
**Subject:** FW: Weather Event Update #1  
**Date:** Friday, 16 July 2021 19:04:16

---

This email is from an external sender. Please be careful with any links or attachments.

## Good evening all

This is probably not news to some of you – I've been involved a little bit today with the civil defense arrangements in Westport, but I wanted to provide an email update on the current weather situation in the South Island

## **We have no current impacts or concerns on the network and are keeping it under close obs.**

Investigations with our Transport tower support team advise no immediate major risks for us and we still have all our network capability in place that we put in during the recent South Island weather event.

## **Red Warning – Heavy Rain for Buller and Westland north of Fox Glacier**

[MetService have issued a Red Warning for Heavy Rain for Buller and Westland north of Fox Glacier regions, plus multiple warnings elsewhere. Red Warnings are reserved for the most impactful weather events and this warning was issued in consultation with regional authorities and CDEM. Click here for the latest Severe Weather information.](#)

- Residents in low-lying areas of Westport on the West Coast are being told to evacuate before nightfall as heavy rain and flooding [prompts a local state of emergency](#).
- A tidal surge at 4am on Saturday could lead to waves taller than 6 metres inundating the coastline.
- Up to 400mm of rain was expected over the next 24 hours, while coastal areas were likely to get between 150mm to 200mm.
- Rainfall was also expected in the east of the South Island, including Christchurch and would continue through until Sunday.
- In addition to the red warning, heavy rain warnings were in place through western Marlborough, Nelson, Westland south of Fox Glacier, as well as the headwaters of the Canterbury lakes.
- Parts of the North Island were also under a heavy rain watch, including northern Taranaki from 9pm, Wellington from 3am, and Tararua Range from 6am on Saturday.
- A strong wind warning was in place for Marlborough, Wellington, Wairarapa south of Featherston, and Taranaki.
- Severe north to northwest gales were forecast, reaching up to 120kmh in exposed places and 140kmh in Wellington.

Situation remains under close observation and **a further report will be sent 6am Monday, or EARLIER on significant change.**



This email, including any attachments, is confidential. If you have received this email in error, please let me know and then delete it - do not read, use, or distribute it or its contents. This email does not designate an information system for the purposes of the Contract and Commercial Law Act 2017.

**From:** [Jo Paterson](#)  
**To:** [Dave Kenny](#); [David Horne](#)  
**Cc:** [Brendon Russ](#); [Ajay Makhija \[NEMA\]](#)  
**Subject:** FW: West Coast CDEM - Severe Weather: Metservice Heavy Rain Warning: MONITORING STATUS  
**Date:** Thursday, 15 July 2021 12:22:08  
**Attachments:** [image001.png](#)  
[image002.png](#)  
[20200918\\_West Coast CDEM Lifelines Contact Information September 2020.pdf](#)  
**Importance:** High

---

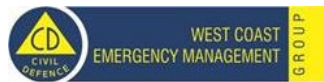
Hello Dave and David,

Please see the below from me. [REDACTED]

Please call or email any time.

Nga mihi

**Jo Paterson**  
**Natural Hazards Analyst & Lifelines Manager**  
Mobile: 021 867 194  
Email: [jo.paterson@wrc.govt.nz](mailto:jo.paterson@wrc.govt.nz)  
Web: [www.westcoastemergency.govt.nz](http://www.westcoastemergency.govt.nz)



---

**From:** Jo Paterson  
**Sent:** Thursday, 15 July 2021 12:13 PM  
**Cc:** Brendon Russ <[brendonr@wrc.govt.nz](mailto:brendonr@wrc.govt.nz)>  
**Subject:** West Coast CDEM - Severe Weather: Metservice Heavy Rain Warning: MONITORING STATUS  
**Importance:** High

IN CONFIDENCE, NOT FOR DISTRIBUTION

Morena,

**West Coast CDEM - Severe Weather: Metservice Heavy Rain Warning**

As you are aware there is a warning in place for our region. Of concern are the large totals and peak intensities about the ranges and on the coast for Buller, Grey and Westland districts.

West Coast CDEM Group will be monitoring the forecasts leading into this event. If you are concerned about any issues or risk to your assets and potential impact to our community. This will enable analysis for contingency planning and decision making as the event progresses by our partner agencies.

We will be in contact with critical lifelines if we require more information.

Kind regards,

Jo Paterson

---

**COMMUNICATION:**

Please contact myself or Brendon with regard to this event. If we are unreachable, please contact the CDEM Duty Officer. Please note this will change if we were to activate an EOC and/or ECC.

All Lifelines key contacts are in the attached document.

1. Jo Paterson – Lifelines Manager & Lifelines Utility Coordinator  
[jo.paterson@wrc.govt.nz](mailto:jo.paterson@wrc.govt.nz)  
**021 867 194**
2. Brendon Russ – backup Lifelines Utility Coordinator  
[brendonr@wrc.govt.nz](mailto:brendonr@wrc.govt.nz)  
**021 674 504**
3. CDEM Duty Officer:



**INTELLIGENCE:**

**WEATHER FORECAST INFORMATION:**

Please see further details at: <https://www.metservice.com/warnings/home>

Warnings: <https://www.metservice.com/warnings/home>

Watch: <https://www.metservice.com/warnings/severe-weather-outlook>

Thunderstorm: <https://www.metservice.com/warnings/thunderstorm-outlook>

Coastal: <https://www.metservice.com/warnings/marine> & <https://www.metservice.com/marine>

=====  
HEAVY RAIN WARNING - ORANGE  
=====

Heavy rain may cause streams and rivers to rise rapidly. Surface flooding and slips are also possible and driving conditions may be hazardous.

Area: Nelson west of Motueka

Valid: 31 hours from 6:00 am Friday to 1:00 pm Saturday

Forecast: Expect 230 to 280mm of rain about the ranges with 130 to 180mm about the coast. Peak rates of 15 to 25mm/h expected from Friday afternoon.

Change note: Upgraded to Orange Warning

Area: Buller

Valid: 41 hours from 1:00 pm Thursday to 6:00 am Saturday

Forecast: Expect 330 to 380mm of rain about the ranges, and 150 to 200mm about the coast. Peak rates of 20 to 30mm per hour expected from Friday afternoon. Thunderstorms possible.

Area: Western ranges of

Marlborough including

the Richmond and Bryant ranges

Valid: 18 hours from 4:00 pm Friday to 10:00 am Saturday

Forecast: Expect 120 to 180mm of rain. Peak rates of 15 to 25mm/h expected.

Change note: Upgraded to an Orange Warning

Area: The headwaters of the Canterbury lakes and rivers from the Rakaia river northwards

Valid: 29 hours from 11:00 pm Thursday to 4:00 am Saturday

Forecast: Expect 300 to 350mm of rain about the divide, with 200 to 250mm within 20km east of the divide. Peak rates of 20 to 30mm/h expected from Friday afternoon to Saturday morning about the divide.

Area: Westland north of Fox Glacier

Valid: 36 hours from 6:00 pm Thursday to 6:00 am Saturday

Forecast: Expect 330 to 380mm of rain about the ranges, and 150 to 200mm about the coast. Peak rates of 20 to 30mm per hour expected from Friday afternoon. Thunderstorms possible.

Area: The headwaters of the Canterbury lakes and rivers between Mount Cook and the Rakaia river

Valid: 21 hours from 4:00 am Friday to 1:00 am Saturday

Forecast: Expect 200 to 250mm of rain about the divide, with 150 to 200mm within 20km east of the divide. Peak rates of 15 to 25mm/h expected from Friday afternoon to Saturday morning about the divide.

Area: Westland south of Fox Glacier

Valid: 24 hours from 9:00 pm Thursday to 9:00 pm Friday

Forecast: Expect to 100 to 150mm of rain. Peak rates of 15 to 25mm/h expected during Friday with thunderstorms possible.

=====  
STRONG WIND WARNING - ORANGE  
=====

Strong wind gusts could damage trees, powerlines and unsecured structures. Driving may be hazardous, especially for high-sided vehicles and motorcycles.

Area: Taranaki

Valid: 19 hours from 8:00 pm Friday to 3:00 pm Saturday

Forecast: Northerly severe gales gusting 120 km/h in exposed places.

Change note: Upgraded to an orange warning

Area: Marlborough

Valid: 19 hours from 1:00 pm Friday to 8:00 am Saturday

Forecast: North to northwest severe gales gusting 120 km/h in exposed places.

Change note: Upgraded to an Orange Warning

Area: Wellington, and Wairarapa south of Featherston

Valid: 20 hours from 3:00 pm Friday to 11:00 am Saturday

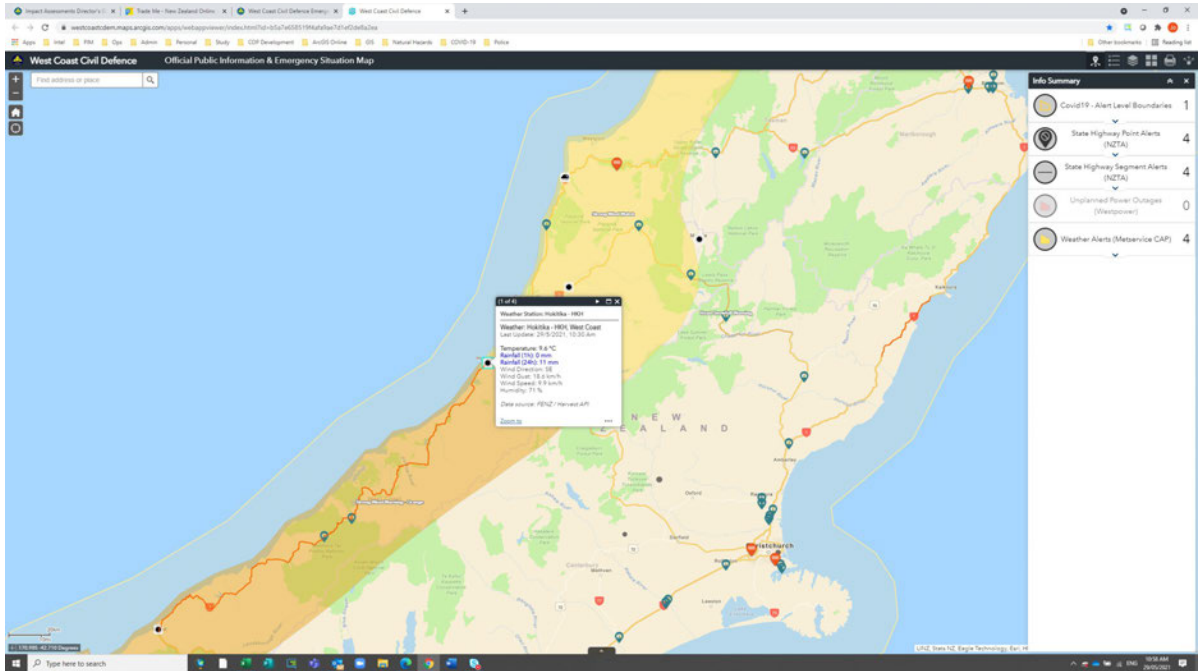
Forecast: North to northwest severe gales gusting 140 km/h in exposed places, but 120 km/h in exposed parts of southern Wairarapa.  
Change note: Upgraded to an Orange Warning

An update for severe weather will be issued by: 9:00 pm Thursday  
15-Jul-2021

**REALTIME WIND INFORMATION:**

We have access to the FENZ weather stations across our region. To access these go to our public information map and click on the weather icons:

<https://westcoastcdem.maps.arcgis.com/apps/webappviewer/index.html?id=b5a7e658519f4afa9ae7d1ef2de8a2ea>



**PUBLIC INFORMATION:**

To keep updated with the latest public information from us please use the link to view our [Official Public Information & Emergency Situation Map](#).

And follow our Facebook page or Website for further information:

<https://www.facebook.com/emergencywestcoast/>

<https://westcoastemergency.govt.nz/>

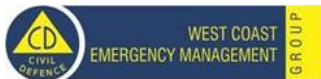
Kind regards,

**Jo Paterson**

Natural Hazards Analyst & Group Lifelines Manager

Cell: 021 867 194

E: [jo.paterson@wrc.govt.nz](mailto:jo.paterson@wrc.govt.nz)



**From:** [Eamon Ginley](#)  
**To:** [Erica Andrews](#)  
**Cc:** [Kim McLaughlin](#); [Tihema Samuels](#)  
**Subject:** Re: BEL - Emergency Contact Numbers  
**Date:** Thursday, 15 July 2021 17:43:10

---

This email is from an external sender. Please be careful with any links or attachments.

Ok, will do.

Sent from my iPhone

On 15/07/2021, at 5:41 PM, Erica Andrews <[erica.andrews@wrc.govt.nz](mailto:erica.andrews@wrc.govt.nz)> wrote:

Yep I saw Claire's clashed, and yes I think stick with our 10.30am or pop into the 10am one and leave early ?

E

**Erica Andrews**

Emergency Management Officer - Buller District  
Group Public Information Manager  
Tel. 03 744 7338  
M: 021 644 625  
E: [erica.andrews@wrc.govt.nz](mailto:erica.andrews@wrc.govt.nz)  
Website: [www.westcoastemergency.govt.nz](http://www.westcoastemergency.govt.nz)

<image001.jpg>

---

**From:** Eamon Ginley <[eamon.ginley@bullernetwork.co.nz](mailto:eamon.ginley@bullernetwork.co.nz)>  
**Sent:** Thursday, 15 July 2021 5:40 PM  
**To:** Kim McLaughlin <[Kim.McLaughlin@bullernetwork.co.nz](mailto:Kim.McLaughlin@bullernetwork.co.nz)>  
**Cc:** Erica Andrews <[erica.andrews@wrc.govt.nz](mailto:erica.andrews@wrc.govt.nz)>; Tihema Samuels <[Tihema.Samuels@bullernetwork.co.nz](mailto:Tihema.Samuels@bullernetwork.co.nz)>  
**Subject:** Re: BEL - Emergency Contact Numbers

This email is from an external sender. Please be careful with any links or attachments.

Thanks Erica. Kim and I will join.

I got another invite from Claire Brown for 10am, but presume I can just do the 10:30 one with you?

Best regards,

Eamon.

Sent from my iPhone

On 15/07/2021, at 5:13 PM, Kim McLaughlin  
<[Kim.McLaughlin@bullernetwork.co.nz](mailto:Kim.McLaughlin@bullernetwork.co.nz)> wrote:

Hi Erica

Yes 10.30 suits fine.

Kim

Sent from my Galaxy

----- Original message -----

From: Erica Andrews <[erica.andrews@wrc.govt.nz](mailto:erica.andrews@wrc.govt.nz)>  
Date: 15/07/21 4:16 PM (GMT+12:00)  
To: Eamon Ginley <[eamon.ginley@bullernetwork.co.nz](mailto:eamon.ginley@bullernetwork.co.nz)>  
Cc: Kim McLaughlin <[Kim.McLaughlin@bullernetwork.co.nz](mailto:Kim.McLaughlin@bullernetwork.co.nz)>, Tihema Samuels <[Tihema.Samuels@bullernetwork.co.nz](mailto:Tihema.Samuels@bullernetwork.co.nz)>  
Subject: RE: BEL - Emergency Contact Numbers

Thanks Eamon, have changed the EMT meeting time to 10.30am hope that works for you Kim?

Meeting will be scheduled shortly.

E

**Erica Andrews**

Emergency Management Officer - Buller District

Group Public Information Manager

Tel. 03 744 7338

M: 021 644 625

E: [erica.andrews@wrc.govt.nz](mailto:erica.andrews@wrc.govt.nz)

Website: [www.westcoastemergency.govt.nz](http://www.westcoastemergency.govt.nz)

<image002.jpg>

---

**From:** Eamon Ginley <[eamon.ginley@bullernetwork.co.nz](mailto:eamon.ginley@bullernetwork.co.nz)>  
**Sent:** Thursday, 15 July 2021 4:00 PM  
**To:** Erica Andrews <[erica.andrews@wrc.govt.nz](mailto:erica.andrews@wrc.govt.nz)>  
**Cc:** Tihema Samuels <[Tihema.Samuels@bullernetwork.co.nz](mailto:Tihema.Samuels@bullernetwork.co.nz)>; Kim McLaughlin <[Kim.McLaughlin@bullernetwork.co.nz](mailto:Kim.McLaughlin@bullernetwork.co.nz)>  
**Subject:** RE: BEL - Emergency Contact Numbers

This email is from an external sender. Please be careful with any links or attachments.

Hi Erica,

Please add Kim to the Zoom meeting invite planned for 7:30 – 8am tomorrow morning, as I will most likely be tied up with the rest of the team.

With thanks,  
Eamon.

---

**From:** Eamon Ginley

**Sent:** Thursday, 15 July 2021 3:04 PM

**To:** Erica Andrews <[erica.andrews@wrc.govt.nz](mailto:erica.andrews@wrc.govt.nz)>

**Cc:** Tihema Samuels <[Tihema.Samuels@bullernetwork.co.nz](mailto:Tihema.Samuels@bullernetwork.co.nz)>; Kim McLaughlin <[Kim.McLaughlin@bullernetwork.co.nz](mailto:Kim.McLaughlin@bullernetwork.co.nz)>

**Subject:** BEL - Emergency Contact Numbers

**Importance:** High

Hi Erica,

Thanks for the briefing today. The Emergency contact numbers for this event are;

BEL Coordinator (manned 24/7): [REDACTED]

Kim McLaughlin: [REDACTED]

Eamon Ginley: [REDACTED]

Please note: The BEL Coordinator is responsible to manage the electrical safety for people working on or near our lines. As such, if they are on critical switching or other duties at the time, they may not answer the phone immediately.

If you need to urgently contact BEL, and cannot reach them, call Kim or I. We are both available 24/7 for the weekend.

With thanks,  
Eamon.

**Eamon Ginley - Chief Executive  
Buller Electricity Limited**

Robertson Street, Westport 7825

P O Box 243, Westport 7866

P. +64 3 788 9903 F. +64 3 7888 191 M. + 64 [REDACTED]

[eamon.ginley@bullernetwork.co.nz](mailto:eamon.ginley@bullernetwork.co.nz)

W. [www.bullerelectricity.co.nz](http://www.bullerelectricity.co.nz)

<image004.jpg>

<image001.png>

The information contained in this email message is confidential and is intended for the individual or entity named above. Unless you are the intended recipient, any use, review, dissemination, distribution or copying of this email is strictly prohibited. If you have received this email in error, please immediately notify us by telephone and destroy the original message. Thank you.



**From:** [Hellen Walker](#) on behalf of [Deborah Wright](#)  
**To:** [Erica Andrews](#)  
**Subject:** RE: Emergency Management Team meeting - see below please[EXTERNAL SENDER]  
**Date:** Thursday, 15 July 2021 12:41:30

---

This email is from an external sender. Please be careful with any links or attachments.

Hi Erica

[REDACTED]

[REDACTED]

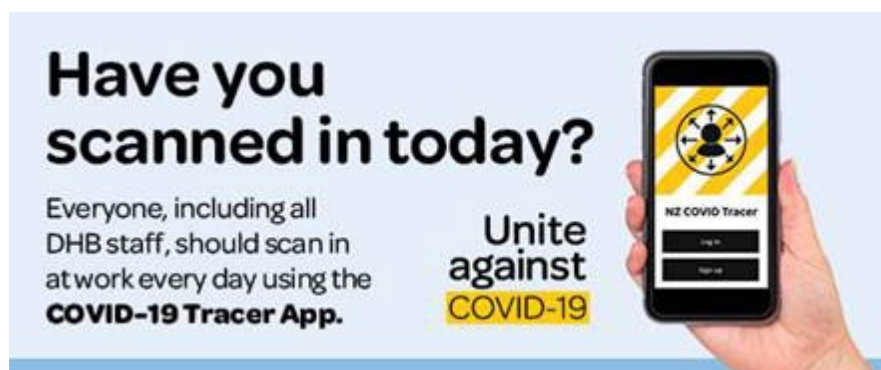
Kind Regards

**Hellen Walker**

*PA to Northern IFHS Manager*

*Buller Health*

(03)788 9297 Extn 8797



-----Original Appointment-----

**From:** Erica Andrews <erica.andrews@wrcr.govt.nz>

**Sent:** Thursday, 15 July 2021 12:31 PM

**To:** Erica Andrews; WERE, Georgina (Georgie); alan.kennedy@fireandemergency.nz; St John Joelle Fox; Eamon Ginley; rachel.townrow@bdc.govt.nz; Bob Dickson [REDACTED]; Deborah Wright; Dylan Taylor (dylan.taylor@westreef.co.nz); Mike Duff; Greg Sherie; [REDACTED] Trevor O'Dea (trevor.o'dea@fireandemergency.nz); TROTT, Dean; jerry.adams@bathurst.co.nz; Mayor Jamie Cleine; Jason MacAskill

**Subject:** Emergency Management Team meeting - see below please[EXTERNAL SENDER]

**When:** Thursday, 15 July 2021 2:00 PM-3:00 PM (UTC+12:00) Auckland, Wellington.

**Where:** Buller Emergency Operations Centre

**Importance:** High

Hi everyone

I propose we get together to talk about this weather event , potential risks to our communities

and advise availability of your liaison over the next few days.

I have doubled up on a couple of reps from some agencies as I am unsure of your staffing and availability, feel free just to send one or many!

Thanks in advance

Erica

-----  
This message has been scanned and found to be free of known security risks. The Information contained in this message and or attachments is intended only for the person or entity to which it is addressed and may contain confidential and or privileged material. Any review, retransmission, dissemination or other use of, or taking of any action in reliance upon, this information by person or entities other than the intended recipient is prohibited. If you receive this in error, please contact the sender and delete the material from your system and destroy any copies.

**From:** [bdc.ops](mailto:bdc.ops)  
**To:** [Erica Andrews](mailto:Erica.Andrews)  
**Cc:** [lisa.dickson@westreef.co.nz](mailto:lisa.dickson@westreef.co.nz); [rota.carroll@westreef.co.nz](mailto:rota.carroll@westreef.co.nz)  
**Subject:** Re: Is the Buller Bridge open or closed? Thanks...  
**Date:** Friday, 16 July 2021 14:26:37

---

This email is from an external sender. Please be careful with any links or attachments.

Erica

The bridge is open

Rota Carroll at WRSL has been tasked with monitoring the situation and will liaise with Moria Winham at NZTA if the close it

I have promised Lisa Dickson i would ask Brendon Russ (river engineer to liaise with Rota if he has concerns)

Regards

Operations Manager  
[REDACTED]

Buller Emergency Operations Centre | Phone 03 789 7999

Email Disclaimer: This correspondence is for the named person's use only. It may contain confidential or legally privileged information or both. No confidentiality or privilege is waived or lost by any mistransmission. If you receive this correspondence in error, please immediately delete it from your system and notify the sender. You must not disclose, copy or relay any part of this correspondence if you are not the intended recipient. Any views expressed in this message are those of the individual sender, except where the sender expressly, and with authority, states them to be the views of Buller Civil Defence



---

**From:** Erica Andrews <[erica.andrews@wrcr.govt.nz](mailto:erica.andrews@wrcr.govt.nz)>  
**Sent:** Friday, 16 July 2021 2:04 PM  
**To:** bdc.ops <[bdc.ops@bdc.govt.nz](mailto:bdc.ops@bdc.govt.nz)>  
**Subject:** FW: Is the Buller Bridge open or closed? Thanks...

**Erica Andrews**

Emergency Management Officer - Buller District  
Group Public Information Manager

Tel. 03 744 7338

M: 021 644 625

E: [erica.andrews@wrc.govt.nz](mailto:erica.andrews@wrc.govt.nz)

Website: [www.westcoastemergency.govt.nz](http://www.westcoastemergency.govt.nz)



---

**From:** Kathryn Cannan <[gumbootchic@hotmail.com](mailto:gumbootchic@hotmail.com)>

**Sent:** Friday, 16 July 2021 1:32 PM

**To:** Erica Andrews <[erica.andrews@wrc.govt.nz](mailto:erica.andrews@wrc.govt.nz)>

**Subject:** Is the Buller Bridge open or closed? Thanks...

This email is from an external sender. Please be careful with any links or attachments.

Also messages heard on bd.ops cell phone and [REDACTED] said these services have been temporarily suspended.

Take care, ERica....from Kathryn

[REDACTED]

[REDACTED]

[REDACTED]

[REDACTED]

[REDACTED]

[REDACTED]

[REDACTED]

---

**From:** Claire Brown <Claire.Brown@wrc.govt.nz>  
**Sent:** Wednesday, 14 July 2021 5:09 pm  
**To:** WC4 CDEM Welfare Coordination Group <wcg@wrc.govt.nz>  
**Subject:** Severe Weather Event Forecast - MetService Warnings

Kia ora koutou katoa **West Coast Welfare Coordination Group**

In Lauren's absence I am sending this heads-up email to you all.

[HEADS-UP FYI – Monitoring Severe Weather Event Thursday and Friday, 15-16 July 2021](#)

As I am sure many of you will be aware MetService has issued the below severe weather warning today.

These are large totals and we would expect to see some impact from this event.

In addition heavy swell and strong wind (north to northwest) watches are also in place for some parts of the region.

Although the northern parts of the region look to be the most affected, the reach could certainly affect all three districts.

We are working with council teams and other partner agencies to keep an eye on this system as it moves through the region over the next two to three days.

We have issued a media release, updated FaceBook, and have made contact with many of our community coordinators.

REMINDER our Duty Officer number should you need it is [REDACTED]

Thank you  
Claire

---

# Severe Weather Warnings

Issued at: 12:22pm Wednesday, 14th July 2021

## Heavy Rain Warning for Buller - Orange

*Heavy rain may cause streams and rivers to rise rapidly. Surface flooding and slips are also possible and driving conditions may be hazardous.*

Issued: 12:21pm Wednesday, 14th July 2021

Area: Buller

Valid: 8:00pm Thursday to 6:00am Saturday

Expect 200 to 275mm of rain about the ranges, with 150 to 200mm about the coast.

Thunderstorms possible. Peak rates of 20 to 30mm/h expected during Friday evening and Saturday morning.

## Heavy Rain Warning for Westland - Orange

*Heavy rain may cause streams and rivers to rise rapidly. Surface flooding and slips are also possible and driving conditions may be hazardous.*

Issued: 12:21pm Wednesday, 14th July 2021

Area: Westland north of Fox Glacier

Valid: 9:00pm Thursday to 5:00am Saturday

Expect 200 to 250mm of rain about the ranges, with 120 to 150mm about the coast.

Thunderstorms possible. Peak rates of 15 to 25mm/h expected during Friday evening and early Saturday morning.

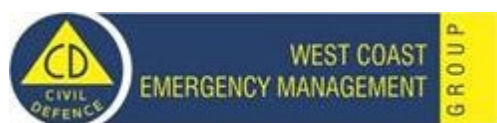
**Claire Brown**

**Regional Director, Emergency Management and Natural Hazards**

Mobile: 027 8636 975

Email: [claire.brown@wrc.govt.nz](mailto:claire.brown@wrc.govt.nz)

Web: [www.westcoastemergency.govt.nz](http://www.westcoastemergency.govt.nz)



[www.govt.nz](http://www.govt.nz) - your guide to finding and using New Zealand government services

---

Any opinions expressed in this message are not necessarily those of the Ministry of Business, Innovation and Employment. This message and any files transmitted with it are confidential and solely for the use of the intended recipient. If you are not the intended recipient or the person responsible for delivery to the intended recipient, be advised that you have received this message in error and that any use is strictly prohibited. Please contact the sender and delete the message and any attachment from your computer.

---

**From:** [Claire Brown](#)  
**To:** [MBIE Alan Bruce](#)  
**Subject:** Re: Severe Weather Event Forecast - MetService Warnings  
**Date:** Wednesday, 14 July 2021 19:53:45

---

Thanks Al

Get [Outlook for Android](#)

---

**From:** AL Bruce <Alan.Bruce@mbie.govt.nz>  
**Sent:** Wednesday, July 14, 2021 7:48:36 PM  
**To:** Claire Brown <Claire.Brown@wrc.govt.nz>  
**Subject:** Re: Severe Weather Event Forecast - MetService Warnings

This email is from an external sender. Please be careful with any links or attachments.

Thanks Claire

We will actively monitor this weather system as well. Please let me know if there's anything that I can do to help or support you.

Cheers Al

Sent from my iPhone

On 14/07/2021, at 5:09 PM, Claire Brown <Claire.Brown@wrc.govt.nz> wrote:

Kia ora koutou katoa **West Coast Welfare Coordination Group**

In Lauren's absence I am sending this heads-up email to you all.

[HEADS-UP FYI – Monitoring Severe Weather Event Thursday and Friday, 15-16 July 2021](#)

As I am sure many of you will be aware MetService has issued the below severe weather warning today.

These are large totals and we would expect to see some impact from this event. In addition heavy swell and strong wind (north to northwest) watches are also in place for some parts of the region.

Although the northern parts of the region look to be the most affected, the reach could certainly affect all three districts.

We are working with council teams and other partner agencies to keep an eye on this system as it moves through the region over the next two to three days.

We have issued a media release, updated FaceBook, and have made contact with many of our community coordinators.

REMINDER our Duty Officer number should you need it is [REDACTED]

Thank you  
Claire

---

## Severe Weather Warnings

Issued at: 12:22pm Wednesday, 14th July 2021

### Heavy Rain Warning for Buller - Orange

*Heavy rain may cause streams and rivers to rise rapidly. Surface flooding and slips are also possible and driving conditions may be hazardous.*

Issued: 12:21pm Wednesday, 14th July 2021

Area: Buller

Valid: 8:00pm Thursday to 6:00am Saturday

Expect 200 to 275mm of rain about the ranges, with 150 to 200mm about the coast. Thunderstorms possible. Peak rates of 20 to 30mm/h expected during Friday evening and Saturday morning.

### Heavy Rain Warning for Westland - Orange

*Heavy rain may cause streams and rivers to rise rapidly. Surface flooding and slips are also possible and driving conditions may be hazardous.*

Issued: 12:21pm Wednesday, 14th July 2021

Area: Westland north of Fox Glacier

Valid: 9:00pm Thursday to 5:00am Saturday

Expect 200 to 250mm of rain about the ranges, with 120 to 150mm about the coast. Thunderstorms possible. Peak rates of 15 to 25mm/h expected during Friday evening and early Saturday morning.

#### Claire Brown

**Regional Director, Emergency Management and Natural Hazards**

Mobile: 027 8636 975

Email: [claire.brown@wrc.govt.nz](mailto:claire.brown@wrc.govt.nz)

Web: [www.westcoastemergency.govt.nz](http://www.westcoastemergency.govt.nz)

<image001.png>



government services

---

Any opinions expressed in this message are not necessarily those of the Ministry of Business, Innovation and Employment. This message and any files transmitted with it are confidential and solely for the use of the intended recipient. If you are not the intended recipient or the person responsible for delivery to the intended recipient, be advised that you have received this message in error and that any use is strictly prohibited. Please contact the sender and delete the message and any attachment from your computer.

---

**From:** [Lynda Carmichael \(Lyn\)](#)  
**To:** [Claire Brown](#)  
**Subject:** RE: Severe Weather Warning for West Coast - Red Warning  
**Date:** Thursday, 15 July 2021 16:18:50

---

This email is from an external sender. Please be careful with any links or attachments.

Great. Messaging going out around all the farming networks and the feedback is that the farmers are on to it and moving stock to sheltered sites and checking on their neighbours

L

---

**From:** Claire Brown <Claire.Brown@wrcr.govt.nz>  
**Sent:** Thursday, 15 July 2021 4:02 PM  
**To:** Lynda Carmichael (Lyn) <Lynda.Carmichael@mpi.govt.nz>  
**Subject:** RE: Severe Weather Warning for West Coast - Red Warning

Thanks Lyn

FYI I will be calling an agency briefing for 1000 tomorrow so if you can factor that into your timeframes thanks

---

**From:** Lynda Carmichael (Lyn) <[Lynda.Carmichael@mpi.govt.nz](mailto:Lynda.Carmichael@mpi.govt.nz)>

**Sent:** Thursday, July 15, 2021 3:57 PM

**To:** Claire Brown <[Claire.Brown@wrcr.govt.nz](mailto:Claire.Brown@wrcr.govt.nz)>; [REDACTED]

[REDACTED]

**Subject:** RE: Severe Weather Warning for West Coast - Red Warning

This email is from an external sender. Please be careful with any links or attachments.

Kia ora Koutou

The rainfall warning for Buller to Westland has now been updated to a **Red Warning**.

Could you all please send me an indication of your availability to assist if needed over the next 5 days and your best contact phone number

Please also continue to update your networks and advise people to prepare for adverse weather, the potential for power outages and that animals should be moved to shelter and away from exposed sites

Nāku noa, nā

Lyn Carmichael | Senior Regional Adviser | Rural Communities and Farming Support  
Agriculture and Investment Services - Tapuwae Ahuwhenua | Ministry for Primary Industries | Manatu Ahu Matua  
DDI: 03-266 1977 | Mobile 027 205 6153 | Web: [www.mpi.govt.nz](http://www.mpi.govt.nz)

---

**From:** Lynda Carmichael (Lyn)

**Sent:** Thursday, 15 July 2021 2:14 PM

**Subject:** Severe Weather Warning for West Coast - Orange

Kia ora Koutou Farming Community Advisory Group members,

As you are probably all aware there is a significant rainfall event forecast for the West Coast over the coming days.

Please advise your networks to have emergency supplies ready, prepare for potential power outages, review any travel plans and stay up to date with weather and road conditions.

Keep up to date with MetService here: <https://www.metservice.com/national> and keep an eye on the CDEM facebook page [West Coast Emergency Management - Home | Facebook](#)

**I will keep you up to date on any actions required from the Farming Community Advisory Group**

**SEVERE WEATHER WARNING -ORANGE**

Issued by MetService at 10:04 am Thursday 15-Jul-2021

Significant heavy rain for the northwest of the South Island. Heavy rain and northerly gales for central New Zealand.

An active front moves eastwards across the southern and central New Zealand from later today through into Saturday. This front is preceded by heavy rain for western areas, and northerly gales for many parts of central New Zealand.

Note, heavy rain from central Westland to northwest Nelson is expected to be significant, with potential for flooding, slips and disruption to transport, also impact for exposed livestock.

**Heavy Rain Warnings**

Area: Buller

Valid: 41 hours from 1:00 pm Thursday to 6:00 am Saturday

Forecast: Expect 330 to 380mm of rain about the ranges, and 150 to 200mm about the coast. Peak rates of 20 to 30mm per hour expected from Friday afternoon. Thunderstorms possible.

Area: Westland north of Fox Glacier

Valid: 36 hours from 6:00 pm Thursday to 6:00 am Saturday

Forecast: Expect 330 to 380mm of rain about the ranges, and 150 to 200mm about the coast. Peak rates of 20 to 30mm per hour expected from Friday afternoon. Thunderstorms possible.

Area: Westland south of Fox Glacier

Valid: 24 hours from 9:00 pm Thursday to 9:00 pm Friday

Forecast: Expect to 100 to 150mm of rain. Peak rates of 15 to 25mm/h expected during Friday with thunderstorms possible.

**Strong Wind Watch**

Area: Buller and Nelson

Valid: 1:00pm Friday to 7:00am Saturday

North to northwest winds may approach severe gale in exposed places.

Area: Westland north of Fox Glacier

Valid: 9:00am Friday to 9:00pm Friday

North to northwest winds may approach severe gale in exposed places.

Keep up to date with MetService here: <https://www.metservice.com/national>

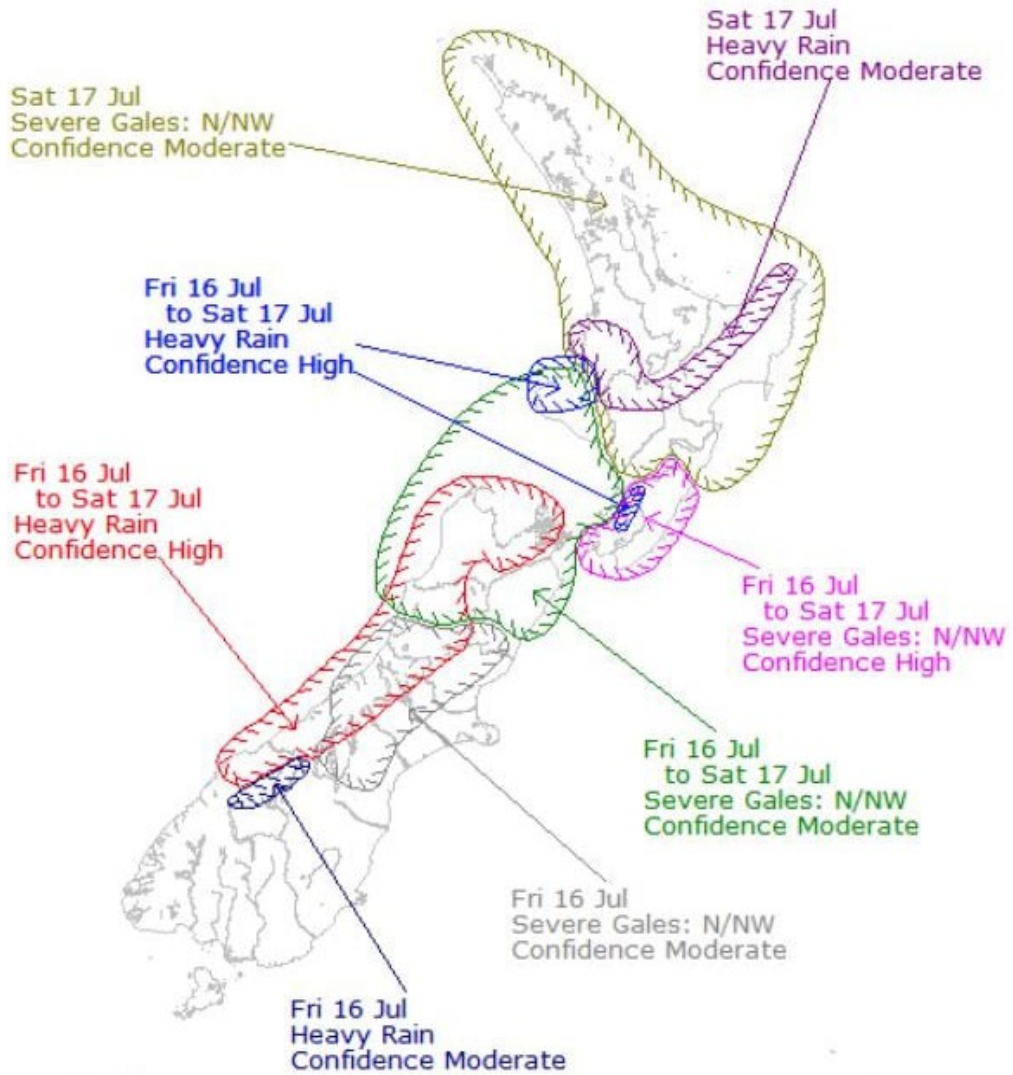
Nāku noa, nā

Lyn Carmichael | Senior Regional Adviser | Rural Communities and Farming Support

Agriculture and Investment Services - Tapuwae Ahuwhenua | Ministry for Primary Industries | Manatu Ahu Matua

DDI: 03-266 1977 | Mobile 027 205 6153 | Web: [www.mpi.govt.nz](http://www.mpi.govt.nz)

Valid Fri 16-Jul-2021 through Mon 19-Jul-2021



Issued 03:13 pm 14-Jul-2021

© Meteorological Service of New Zealand Ltd

---

This email message and any attachment(s) is intended solely for the addressee(s) named above. The information it contains may be classified and may be legally privileged. Unauthorised use of the message, or the information it contains, may be unlawful. If you have received this message by mistake please call the sender immediately on 64 4 8940100 or notify us by return email and erase the original message and attachments. Thank you.

The Ministry for Primary Industries accepts no responsibility for changes made to this email or to any attachments after transmission from the office.

---

This email message and any attachment(s) is intended solely for the addressee(s) named above. The information it contains may be classified and may be legally privileged. Unauthorised use of the message, or the information it contains, may be unlawful. If you have received this message by mistake please call the sender immediately on 64 4 8940100 or notify us by return email and erase the original message and attachments. Thank you.

The Ministry for Primary Industries accepts no responsibility for changes made to this email or to any attachments after transmission from the office.

---

**From:** [Claire Brown](#)  
**To:** [Cheryl Brunton](#); [GDC Paul Morris](#); [Jacqui Corner](#); [Mark Boere](#); [Mark Davies](#); [NEMA Sandra James](#); [Nils Walzel](#); [Philip Wheble](#); [Rachael Forsyth](#); [Sharon Mason](#); [Simon Bastion](#); [St John James McMeekin](#); [Te Aroha Cook](#); [Te Rūnanga o Ngāti Waewae Hamiria Hutana](#); [WCDHB Jason MacAskill](#); [Heather Mabin](#); ["Bruce Smith"](#); ["Mayor Jamie Cleine"](#); ["Tania Gibson"](#); [Allan Birchfield Home](#); [Allan Birchfield](#); [Francois Tumahai](#); ["Paul Madgwick"](#); [Bob Dickson](#) [REDACTED]; [Sean Judd \(sean.judd@bdc.govt.nz\)](#); [Trevor Watts](#); [John Canning](#); [mike.meehan@nzimr.co.nz](#); [Mark Davies](#); [Don Scott](#); [Vern Morris](#)  
**Cc:** [Erica Andrews](#); [Jo Paterson](#); [Lauren Emanuel](#); [Matt Beavon](#); [Mike McEnaney](#); [Mike McEnaney](#); [NEMA Sandra James](#); [NEMA Simon Chambers](#)  
**Subject:** RED Severe Weather Event Forecast - MetService Warnings  
**Date:** Thursday, 15 July 2021 16:51:40  
**Attachments:** [image001.png](#)

---

This email is from an external sender. Please be careful with any links or attachments.

UPDATE No.2 Thursday 15 July 2021

Kia ora koutou **West Coast Emergency Management Joint Committee, Coordinating Executive Group and Controllers**

As you will have seen MetService has issued a new elevated RED warning. Refer below.  
A number of you will have already been involved in preparatory activities already.

- We have in place or on stand-by roster and shift-times across councils.
- We are looking at sending out a notification about the weather in an 'Emergency Mobile Alert' – that will either come out later this evening or tomorrow morning.
- Our Regional Emergency Management Advisor (Sandra James) is travelling over from Christchurch now in the event we need assistance or to help coordinate support from out of the region.
- We have been responding to media requests and have been managing our social media since yesterday afternoon.
- I will also be sending an invite to emergency service partners and council teams for **briefing 10.00am tomorrow morning** – with a zoom invite, and in person at the Coordination Centre at the Westland Recreation Centre.

Fantastic support from our Council teams.  
We will keep you informed.

---

## Severe Weather Warnings

Issued at: 2:32pm Thursday, 15th July 2021

### Heavy Rain Warning for Buller, Westland - Red

*This rain is expected to cause dangerous river conditions and significant flooding. Slips and floodwaters are likely to disrupt travel, making some roads impassable and possibly isolating communities.*

Issued: 2:31pm Thursday, 15th July 2021

Area: Buller and Westland north of Fox Glacier

Valid: 9:00pm Thursday to 6:00am Saturday

Expect 330 to 380mm of rain about the ranges, and 150 to 200mm about the coast. Peak rates

of 20 to 30mm per hour expected from Friday afternoon. Thunderstorms possible tomorrow and early Saturday.

---

**From:** Claire Brown

**Sent:** Wednesday, July 14, 2021 5:07 PM

**To:** Cheryl Brunton <cheryl.brunton@cdhb.health.nz>; GDC Paul Morris <Paul.morris@greydc.govt.nz>; Jacqui Corner <Jacqueline.Corner@police.govt.nz>; Mark Boere <mark.boere@fireandemergency.nz>; Mark Davies <mr Davies@doc.govt.nz>; NEMA Sandra James <sandra.james@nema.govt.nz>; Nils Walzel <nils.walzel@stjohn.org.nz>; Philip Wheble <philip.wheble@westcoastdhd.health.nz>; Rachael Forsyth <rachael.forsyth@ngaitahu.iwi.nz>; Sharon Mason <sharon.mason@bdc.govt.nz>; Simon Bastion <simon.bastion@westlanddc.govt.nz>; St John James McMeekin <james.mcmeekin@stjohn.org.nz>; Te Aroha Cook <tearoha.cook@westlanddc.govt.nz>; Te Rūnanga o Ngāti Waewae Hamiria Hutana <hamiria.hutana@ngaitahu.iwi.nz>; WCDHB Jason MacAskill <jason.macaskill@wcdhb.health.nz>; 'Heather Mabin' <heather.mabin@wrc.govt.nz>; 'Bruce Smith' <mayor.smith@westlanddc.govt.nz>; 'Mayor Jamie Cleine' <jamie.cleine@bdc.govt.nz>; 'Tania Gibson' <mayor@greydc.govt.nz>; Allan Birchfield Home [REDACTED] >; Allan Birchfield <allan.birchfield@wrc.govt.nz>; Francois Tumahai <francois@ngatiwaewae.org.nz>; 'Paul Madgwick' <makaawhio@gmail.com>; Bob Dickson [REDACTED] Sean Judd <sean.judd@bdc.govt.nz>; Trevor Watts <trevor.watts@minerescue.org.nz>; John Canning <john.canning@greydc.govt.nz>; mike.meehan@nzimr.co.nz; Mark Davies <mr Davies@doc.govt.nz>; Don Scott [REDACTED] >; V Morris <vern.morris@westlanddc.govt.nz>  
**Cc:** erica.andrews@wrc.govt.nz; Jo Paterson <Jo.paterson@wrc.govt.nz>; lauren.emmanuel@wrc.govt.nz; Matt Beavon (matt.beavon@wrc.govt.nz) <matt.beavon@wrc.govt.nz>; Mike McEnaney <mike.mcenaney@wrc.govt.nz>; Mike McEnaney (mike.mcenaney@westcoast.govt.nz) <mike.mcenaney@westcoast.govt.nz>  
**Subject:** Severe Weather Event Forecast - MetService Warnings

Kia ora koutou **West Coast Emergency Management Joint Committee, Coordinating Executive Group and Controllers**

[HEADS-UP FYI – Monitoring Severe Weather Event Thursday and Friday, 15-16 July 2021](#)

As I am sure many of you will be aware MetService has issued the below severe weather warning today.

These are large totals and we would expect to see some impact from this event.

In addition heavy swell and strong wind (north to northwest) watches are also in place for some parts of the region.

Although the northern parts of the region look to be the most affected, the reach could certainly affect all three districts.

We are working with council teams and other partner agencies to keep an eye on this system as it moves through the region over the next two to three days.

We have issued a media release and updated our Facebook, and have made contact with many of our community coordinators.

REMINDER our Duty Officer number should you need it is [REDACTED]

Thank you  
Claire

---

## Severe Weather Warnings

Issued at: 12:22pm Wednesday, 14th July 2021

### Heavy Rain Warning for Buller - Orange

*Heavy rain may cause streams and rivers to rise rapidly. Surface flooding and slips are also possible and driving conditions may be hazardous.*

Issued: 12:21pm Wednesday, 14th July 2021

Area: Buller

Valid: 8:00pm Thursday to 6:00am Saturday

Expect 200 to 275mm of rain about the ranges, with 150 to 200mm about the coast.

Thunderstorms possible. Peak rates of 20 to 30mm/h expected during Friday evening and Saturday morning.

### Heavy Rain Warning for Westland - Orange

*Heavy rain may cause streams and rivers to rise rapidly. Surface flooding and slips are also possible and driving conditions may be hazardous.*

Issued: 12:21pm Wednesday, 14th July 2021

Area: Westland north of Fox Glacier

Valid: 9:00pm Thursday to 5:00am Saturday

Expect 200 to 250mm of rain about the ranges, with 120 to 150mm about the coast.

Thunderstorms possible. Peak rates of 15 to 25mm/h expected during Friday evening and early Saturday morning.

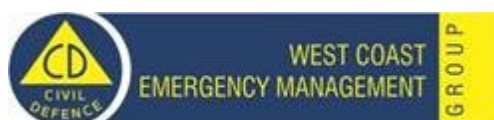
**Claire Brown**

**Regional Director, Emergency Management and Natural Hazards**

Mobile: 027 8636 975

Email: [claire.brown@wrc.govt.nz](mailto:claire.brown@wrc.govt.nz)

Web: [www.westcoastemergency.govt.nz](http://www.westcoastemergency.govt.nz)



**From:** [Erica Andrews](#)  
**To:** [REDACTED]  
**Cc:**  
**Subject:** Update from the EOC for community coordinators  
**Date:** Friday, 16 July 2021 15:23:40  
**Importance:** High

---

Hi everyone

Quick update from me:

- Buller EOC is activated
- Some areas of Westport are being requested to voluntarily evacuate
- We are under a Local declaration for Buller
- More bad weather to come

Keep connected with the Ops function team, and be safe.

Thanks E

**Erica Andrews**

Emergency Management Officer - Buller District

Group Public Information Manager

Tel. 03 744 7338

M: 021 644 625

E: [erica.andrews@wrc.govt.nz](mailto:erica.andrews@wrc.govt.nz)

Website: [www.westcoastemergency.govt.nz](http://www.westcoastemergency.govt.nz)





**From:** [WCST-ECC-WELFARE](#)

**To:**

[Redacted recipient list]

**Subject:** Welfare Coordination Group Update

**Date:** Saturday, 17 July 2021 08:02:40

This email is from an external sender. Please be careful with any links or attachments.

Hi All

Just a quick update on the situation here on the West Coast and possible assistance required today.

The situation in Buller is being monitored closely and it may be that there will need to be a WCG ZOOM call today.

Claire Brown is heading to the Buller region and we will be in contact as things progress.

It may be that we will need updates from MBIE, MSD, MPIE at the ZOOM Meeting.

Thanks, we will be in contact.

Penny

**From:** [Tom Kiel \[NEMA\]](#)

**To:**

[REDACTED]

**Subject:** West Coast Weather Event - EMAT Deployment Order  
**Date:** Friday, 16 July 2021 14:42:00  
**Attachments:** [2021-07-17 West Coast EMAT Deployment Order.pdf](#)

---

This email is from an external sender. Please be careful with any links or attachments.

[UNCLASSIFIED]

EMAT is Deploying to the West Coast Weather Event.

Please see the attached Deployment Order, with the Team List within.

For those not listed within the Deployment Order, this is for your ongoing Situational Awareness.

[REDACTED]

Kind Regards

**Tom Kiel** | Senior Advisor, Deployable Capabilities  
**National Emergency Management Agency Te Rākau Whakamarumarū**  
Mobile: +64 27 221 3472 | [www.civildefence.govt.nz](http://www.civildefence.govt.nz)  
Level 7, TSB House, 147 Lambton Quay | PO Box 5010, Wellington 6045, New Zealand

*NEMA works with you to build New Zealand's resilience by keeping people safe and reducing the impact of emergencies on our communities and whānau.*



---

The information contained in this email message is for the attention of the intended recipient only and is not necessarily the official view or communication of the Department of the Prime Minister and Cabinet. If you are not the intended recipient you must not disclose, copy or distribute this message or the information in it. If you have received this message in error, please destroy the email and notify the sender immediately.

**From:** [Chris Moore \[NEMA\]](#)  
**To:** [^EXT: Lauren emanuel](#)  
**Subject:** NCC Welfare Desk Update  
**Date:** Saturday, 17 July 2021 11:18:30

---

This email is from an external sender. Please be careful with any links or attachments.

[UNCLASSIFIED]

Kia ora Laruen,

[REDACTED]

Firstly, I would like to confirm that the NCC Welfare desk is operational as of 0800 on 17 July 2021. We will be operating through until the end of next week at this stage with operational hours between 0800-1800.

Secondly, we have been notified of the evacuations that are beginning in the Buller, Marlborough and Nelson regions. Please let you know if there is any welfare assistance you require from us over the coming days.

[REDACTED]

Ngā mihi nui,

Chris Moore

**Chris Moore** | Advisor, Social and Community Resilience  
**National Emergency Management Agency Te Rākau Whakamarumarū**  
Mobile: +64 27 213 2992 | [www.civildefence.govt.nz](http://www.civildefence.govt.nz) Level 6, TSB House, 147 Lambton Quay | PO Box 5010, Wellington 6140, New Zealand

*NEMA works with you to build New Zealand's resilience by keeping people safe and reducing the impact of emergencies on our communities and whānau.*



---

The information contained in this email message is for the attention of the intended recipient only and is not necessarily the official view or communication of the Department of the Prime Minister and Cabinet. If you are not the intended recipient you must not disclose, copy or distribute this message or the information in it. If you have received this message in error, please destroy the email and notify the sender immediately.