

From: ^EXT: Jo Paterson
To: Dave Kenny; David Horne
Cc: Brendon Russ; Ajay Makhija [NEMA]
Subject: FW: West Coast CDEM - Severe Weather: Metservice Heavy Rain Warning: MONITORING STATUS
Date: Thursday, 15 July 2021 12:22:19 pm
Attachments: image001.png
image002.png
Importance: Not relevant to your request
High

Hello Dave and David,

Please see the below from me. Also please note I have heard indirectly that you have impacts to your network in the Reefton area:

‘There is a large Spark outage today for most of the south island using 03 numbers on a landline. This has affected the Reefton Service Centre phones, but not internet/email etc. so you can still contact them via email.’ – BDC IT Team

From now on until this event is over please make sure to contact myself or the following contacts of any impacts to your network and estimated restoration times. As you are aware telcos are critical to monitoring risk and impact during response and West Coast CDEM and agencies are currently monitoring and looking to potential escalate and therefore are reliant on understanding impacts to Lifelines especially Telcos.

Please call or email any time.

Nga mihi

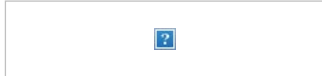
Jo Paterson

Natural Hazards Analyst & Lifelines Manager

Mobile: [REDACTED]

Email: xx.xxxxxxx@xxxx.xxxx.xx

Web: www.westcoastemergency.govt.nz



From: Jo Paterson

Sent: Thursday, 15 July 2021 12:13 PM

Cc: Brendon Russ <xxxxxxx@xxxx.xxxx.xx>

Subject: West Coast CDEM - Severe Weather: Metservice Heavy Rain Warning: MONITORING STATUS

Importance: High

IN CONFIDENCE, NOT FOR DISTRIBUTION

Morena,

West Coast CDEM - Severe Weather: Metservice Heavy Rain Warning

As you are aware there is a warning in place for our region. Of concern are the large totals and peak intensities about the ranges and on the coast for Buller, Grey and Westland districts.

West Coast CDEM Group will be monitoring the forecasts leading into this event. If you are concerned about any issues or risk to your assets and potential impact to our community. This will enable analysis for contingency planning and decision making as the event progresses by our partner agencies.

We will be in contact with critical lifelines if we require more information.

Kind regards,

Jo Paterson

COMMUNICATION:

Please contact myself or Brendon with regard to this event. If we are unreachable, please contact the CDEM Duty Officer. Please note this will change if we were to activate an EOC and/or ECC.

All Lifelines key contacts are in the attached document.

1. Jo Paterson – Lifelines Manager & Lifelines Utility Coordinator

xx.xxxxxxx@xxxx.xxxx.xx

2. Brendon Russ – backup Lifelines Utility Coordinator

xxxxxxx@xxxx.xxxx.xx

3. CDEM Duty Officer:

s9(2)(g)(iii)

INTELLIGENCE:

WEATHER FORECAST INFORMATION:

Please see further details at: <https://www.metservice.com/warnings/home>

Warnings: <https://www.metservice.com/warnings/home>

Watch: <https://www.metservice.com/warnings/severe-weather-outlook>

Thunderstorm: <https://www.metservice.com/warnings/thunderstorm-outlook>

Coastal: <https://www.metservice.com/warnings/marine> & <https://www.metservice.com/marine>

=====

HEAVY RAIN WARNING - ORANGE

=====

Heavy rain may cause streams and rivers to rise rapidly. Surface flooding and slips are also possible and driving conditions may be hazardous.

Area: Nelson west of Motueka

Valid: 31 hours from 6:00 am Friday to 1:00 pm Saturday

Forecast: Expect 230 to 280mm of rain about the ranges with 130 to 180mm about the coast. Peak rates of 15 to 25mm/h expected from Friday afternoon.

Change note: Upgraded to Orange Warning

Area: Buller

Valid: 41 hours from 1:00 pm Thursday to 6:00 am Saturday

Forecast: Expect 330 to 380mm of rain about the ranges, and 150 to 200mm about the coast. Peak rates of 20 to 30mm per hour expected

from Friday afternoon. Thunderstorms possible.

Area: Western ranges of

Marlborough including

the Richmond and Bryant ranges

Valid: 18 hours from 4:00 pm Friday to 10:00 am Saturday

Forecast: Expect 120 to 180mm of rain. Peak rates of 15 to 25mm/h expected.

Change note: Upgraded to an Orange Warning

Area: The headwaters of the Canterbury lakes and rivers from the Rakaia river northwards

Valid: 29 hours from 11:00 pm Thursday to 4:00 am Saturday

Forecast: Expect 300 to 350mm of rain about the divide, with 200 to 250mm within 20km east of the divide. Peak rates of 20 to 30mm/h expected from Friday afternoon to Saturday morning about the divide.

Area: Westland north of Fox Glacier

Valid: 36 hours from 6:00 pm Thursday to 6:00 am Saturday

Forecast: Expect 330 to 380mm of rain about the ranges, and 150 to 200mm about the coast. Peak rates of 20 to 30mm per hour expected from Friday afternoon. Thunderstorms possible.

Area: The headwaters of the Canterbury lakes and rivers between Mount Cook and the Rakaia river

Valid: 21 hours from 4:00 am Friday to 1:00 am Saturday

Forecast: Expect 200 to 250mm of rain about the divide, with 150 to 200mm within 20km east of the divide. Peak rates of 15 to 25mm/h expected from Friday afternoon to Saturday morning about the divide.

Area: Westland south of Fox Glacier

Valid: 24 hours from 9:00 pm Thursday to 9:00 pm Friday

Forecast: Expect to 100 to 150mm of rain. Peak rates of 15 to 25mm/h expected during Friday with thunderstorms possible.

=====

STRONG WIND WARNING - ORANGE

=====

Strong wind gusts could damage trees, powerlines and unsecured structures. Driving may be hazardous, especially for high-sided vehicles and motorcycles.

Area: Taranaki

Valid: 19 hours from 8:00 pm Friday to 3:00 pm Saturday

Forecast: Northerly severe gales gusting 120 km/h in exposed places.

Change note: Upgraded to an orange warning

Area: Marlborough

Valid: 19 hours from 1:00 pm Friday to 8:00 am Saturday

Forecast: North to northwest severe gales gusting 120 km/h in exposed places.

Change note: Upgraded to an Orange Warning

Area: Wellington, and Wairarapa south of Featherston

Valid: 20 hours from 3:00 pm Friday to 11:00 am Saturday

Forecast: North to northwest severe gales gusting 140 km/h in exposed places, but 120 km/h in exposed parts of southern Wairarapa.

Change note: Upgraded to an Orange Warning

An update for severe weather will be issued by: 9:00 pm Thursday

15-Jul-2021

REALTIME WIND INFORMATION:

We have access to the FENZ weather stations across our region. To access these go to our public information map and click on the weather icons:

<https://westcoastcdem.maps.arcgis.com/apps/webappviewer/index.html?id=b5a7e658519f4afa9ae7d1ef2de8a2ea>



PUBLIC INFORMATION:

To keep updated with the latest public information from us please use the link to view our [Official Public Information & Emergency Situation Map](#).

And follow our Facebook page or Website for further information:

<https://www.facebook.com/emergencywestcoast/>

<https://westcoastemergency.govt.nz/>

Kind regards,

Jo Paterson

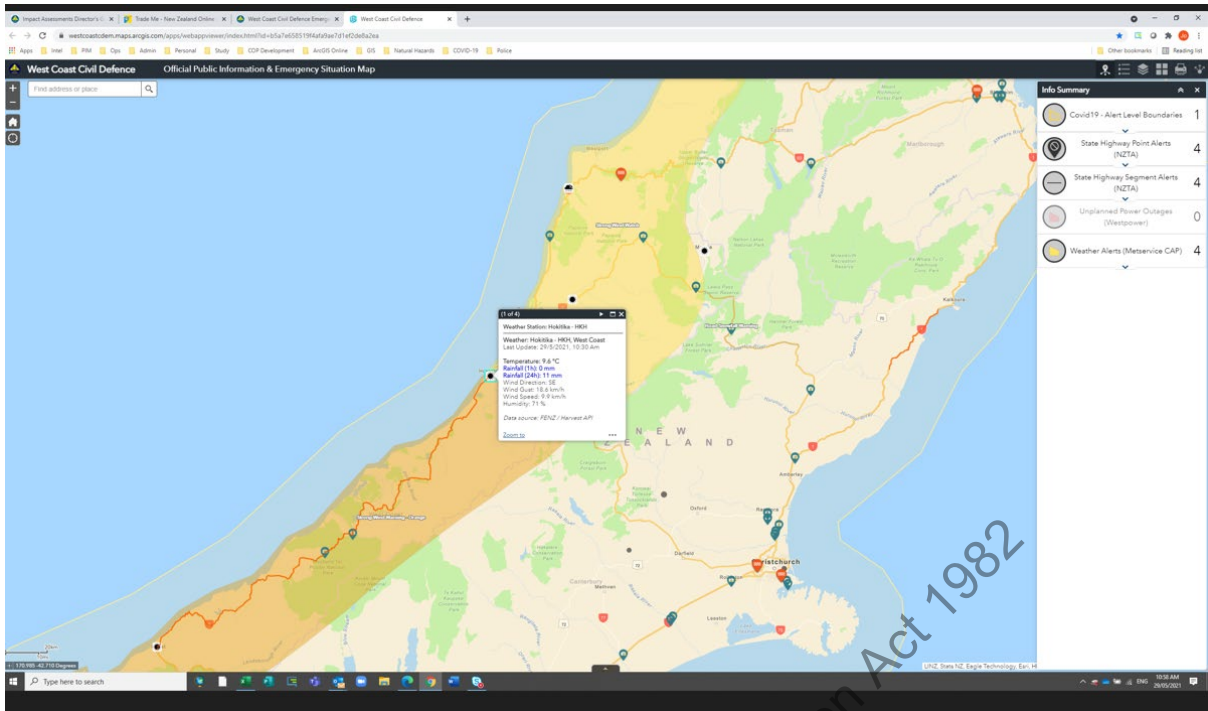
Natural Hazards Analyst & Group Lifelines Manager

Cell: [REDACTED]

E: xx.xxxxxxx@xxxx.xxxx.xx



Released under the Official Information Act 1982



Released under the Official Information Act 1982

From: [^EXT: Jo Paterson](#)
Subject: Fwd: Landline phones are working again
Date: Thursday, 15 July 2021 1:32:15 pm
Attachments: [image001.jpg](#)
[image002.png](#)
[image003.jpg](#)

Fyi

Get [Outlook for Android](#)

From: Erica Andrews <xxxxx.xxxxxx@xxx.xxxx.xx>
Sent: Thursday, July 15, 2021 1:17:16 PM
To: Jo Paterson <xx.xxxxxxx@xxx.xxxx.xx>; Brendon Russ <xxxxxxx@xxx.xxt.nz>
Subject: FW: Landline phones are working again
fyi

Erica Andrews

Emergency Management Officer - Buller District
Group Public Information Manager
Tel. 03 744 7338
M: [REDACTED]
E: xxxxx.xxxxxx@xxx.xxxx.xx
Website: www.westcoastemergency.govt.nz



From: Hayden Sharpe <xxxxxx.xxxxx@xxx.xxxx.xx>
Sent: Thursday, 15 July 2021 1:10 PM
To: BDC All Staff (Council-wide) <xxxxxxx@xxx.xxxx.xx>
Subject: Landline phones are working again

This email is from an external sender. Please be careful with any links or attachments.

Hi Everyone,
All landline phones are working, and the Reefton SC is contactable via phone again
Thanks
Hayden
Hayden Sharpe | Team Leader
[REDACTED] | Mobile [REDACTED] | Email xxxxxx.xxxxx@xxx.xxxx.xx

Buller District Council | Phone 0800 807 239 | www.bullerdc.govt.nz
PO Box 21 | Westport 7866

Community Driven | One Team | Future Focused | Integrity | We Care

Email Disclaimer: This correspondence is for the named person's use only. It may contain confidential or legally privileged information or both. No confidentiality or privilege is waived or lost by any mistransmission. If you receive this correspondence in error, please immediately delete it from your system and notify the sender. You must not disclose, copy or relay any part of this correspondence if you are not the intended recipient. Any views expressed in this message are those of the individual sender, except where the sender expressly, and with authority, states them to be the views of Buller District Council.

[Buller District Council Website](#)

This email has been filtered by SMX. For more information visit smxemail.com

Released under the Official Information Act 1982

From: [NEMA National Warning System](#)
To: [Kevin Fenaughty \[NEMA\]](#)
Subject: NEMA National Coordination Centre activated
Date: Friday, 16 July 2021 12:21:53 pm
Attachments: [South Island Severe Weather Initial Action Plan July 2021.pdf](#)



The National Emergency Management Agency National Coordination Centre (NCC) has been activated at Mode 2 in support of the response to the South Island Severe Weather.

Please find attached an initial National Action Plan.

No actions required from NCC liaison agencies at this time:

Other agencies are NOT required to report to the NCC facility at this time but your own internal procedures may apply. Representatives from liaison agencies will be contacted directly if the situation escalates and we require further support.

Note: Please do not reply to this email. Direct any correspondence to the contact details noted below.

Regards

Operations Manager

Contact Details:

General enquires: (04) 830 5100

Media enquires: (04) 494 6951

Email: s9(2)(g)(ii)

<!--[if !supportAnnotations]-->
<!--[endif]-->

Released under the Official Information Act 1982

Severe Weather Initial Action Plan



National Emergency Management Agency
Te Rākau Whakamarumaru



New Zealand Government
Te Kāwanatanga o Aotearoa

| NEMA National Coordination Centre Initial Response Plan | | | |
|--|--|--------------------------------------|--|
| Incident: Severe Weather | Action Plan No: 1 | | |
| NCMC Mode: 2 | Date/time of issue: 16/07/21 11:30 hrs | | |
| Operational Period: 16/07/21 09:00 hrs until terminated by National Controller | Incident Classification: | | |
| Contact: phone: s9(2)(g)(ii) email: s9(2)(g)(ii) | <table border="1" style="width: 100%; text-align: center;"> <tr> <td style="width: 50%; vertical-align: middle;">N1 [Insert classification number]</td> <td style="width: 50%; vertical-align: middle;"> <div style="text-align: center;"> S </div> </td> </tr> </table> <p>N1 = A minor national level response N2 = A moderate national level response N3 = A major national level response N4 = A severe national level response</p> | N1 [Insert classification number] | <div style="text-align: center;"> S </div> |
| N1 [Insert classification number] | <div style="text-align: center;"> S </div> | | |

| Summary of incident |
|--|
| <p>MetService have issued a Red Warning for Heavy Rain for Buller and Westland north of Fox Glacier regions. This rain is expected to cause dangerous river conditions and significant flooding. Slips and floodwaters are likely to disrupt travel, making some roads impassable and possibly isolating communities.</p> <p>(Red warnings are reserved for only the most extreme weather events, where significant impact and disruption is expected. It signifies that people need to act now as immediate action is required to protect people, animals and property from the impact of the weather).</p> <p>Up to 120mm has been recorded in some areas, a further 200 to 280mm of rain is expected, and 90 to 150mm about the coast. Peak rates of 20 to 30mm per hour about the ranges, and thunderstorms possible.</p> <p>There are also severe weather warnings in place for heavy rain in Westland (south of Fox Glacier), Nelson, Marlborough and the Canterbury headwaters, as well as strong wind warnings for Taranaki, Marlborough, Wellington, and the Wairarapa.</p> <p>Key impacts could include isolation of communities, damage to property, roads and utilities along the West Coast of the South Island, as well as possible building and infrastructure damage.</p> <p>This event is expected to intensify and may result in difficulties moving people and resources into affected areas.</p> |

Response activities

The National Emergency Management Agency (NEMA) has activated its National Coordination Centre (NCC) at Mode 2.

The West Coast CDEM Group has activated their ECC. Nelson-Tasman and Canterbury CDEM Groups are monitoring the situation.

Mission

To support activated CDEM Groups and coordinate resource requests in preparation for the impacts of what is likely to be a significant event.

Intent of the Initial National Action Plan

Government intent

The New Zealand public have confidence in the response. The Government is responsive to immediate and longer term needs of communities.

Purpose

The Initial National Action Plan covers the first 24-48 hours of the response. Depending on the nature of this response a further NCC action plan may be developed based on the specifics of this event

This Initial National Action Plan aims to coordinate response-critical information requirements, pre-identified requests for assistance and response priorities.

Through this Plan, we will anticipate arising issues and facilitate proactive and effective response coordination with CDEM Groups and central government agencies (where required) to assess needs and impacts, establish mechanisms to deliver essential services to affected communities, and ensure public safety and wellbeing.

Response objectives

Understand the situation and impacts

Preserve life, protect health, limit the spread of disease and provide health and welfare services to affected communities

Prevent casualties from related hazards

Ensure the provision of essential services

Provide critical resources

Enable movement of people and freight into and out of the affected areas

Communicate with affected communities and the wider public throughout the response.

Mobilise the response structure at all levels

Preserve governance

Maintain law and order

Prepare for recovery

Plan of action

To achieve the intent and objectives, the NCC will:

| Priorities for this operational period: | To achieve the above priorities we will: | Responsible: |
|--|---|---|
| Establish response structure | <p>Activate and staff functions as appropriate</p> <p>Communicate the structure with Director / Minister / CDEM Group(s)</p> <p>Establish and communicate a reporting regime</p> <p>Determine & communicate teleconference regime</p> <p>Establish National Recovery arrangements</p> | <p>Control Team</p> <p>Operations</p> <p>Operations</p> <p>Control Team</p> <p>Control Team</p> |
| Establish impact | <p>Ascertain information from Groups according to:</p> <ul style="list-style-type: none"> o Evacuation statuses o Lifelines o Access | Intelligence |
| Confirm CDEM Group responses are in place | <p>Establish CDEM Groups' response statuses</p> <p>Obtain CDEM Group action plans</p> | <p>Intelligence</p> <p>Operations</p> |
| Establish national coordination | <p>Establish IMT meeting regime</p> <p>Coordinate national level information</p> <p>Coordinate national level response activities</p> | <p>Intelligence</p> <p>Intelligence</p> <p>Control Team;</p> <p>Logistics</p> |
| Informing the Minister | <p>Provide an initial briefing to Minister</p> <p>Establish a schedule for Minister's updates</p> | <p>Policy</p> <p>Control Team</p> |
| Ensure adequate staffing of all functions. | <p>Establish a staffing roster</p> | <p>Logistics</p> <p>(Facilities)</p> |

Designated Tasks

The following designated tasks are listed by agency and are in addition to BAU and tasks listed in the CDEM Plan 2015.

National Controller (NCC)

| Workstream | Critical tasks |
|------------------------------------|---|
| Command, control and communication | <ul style="list-style-type: none"> • Activate the NCC. • Establish contact with CDEM Groups, other National Coordination Centres (NCCs), sector coordinating entities, and science and research organisations, where applicable. • Identify supplementary staffing requirements and communicate these to agencies. |

| Workstream | Critical tasks |
|---|---|
| Reconnaissance and information collection | <ul style="list-style-type: none"> Consolidate personnel, equipment and supply requests from CDEM Groups and other agencies. Consolidate and communicate reconnaissance and information collection outputs. Coordinate reconnaissance to ensure the best use of assets, including providing access to reconnaissance flights for road and rail engineers. |
| Health | <ul style="list-style-type: none"> Support the provision of public health response and disease surveillance and monitoring in affected areas, in conjunction with the Ministry of Health. |
| Welfare | <ul style="list-style-type: none"> Via the National Welfare Manager, consider activation of the NWCG. Establish contact with CDEM Group Welfare Managers and determine the need for NWCG support. Activate all welfare services sub-functions as per agency responsibilities in the National CDEM Plan 2015, if required. Establish contact with support agencies, and ensure national and regional sub-function coordination, if required. |
| Lifeline utilities restoration | <ul style="list-style-type: none"> Work with SCEs to prioritise restoration, including providing details of priority locations for restoration, if required. |
| Public information management | <ul style="list-style-type: none"> Coordinate shared media engagement for CDEM Groups as appropriate to ensure that the public sees a 'joined-up' approach to the overall response. |

Affected CDEM Groups

| Workstream | Critical tasks |
|---|---|
| Command, control and communication | <ul style="list-style-type: none"> Activate ECCs as per own plans and procedures, without waiting for direction. Establish contact with the NCC. |
| Reconnaissance and information collection | <ul style="list-style-type: none"> Source and communicate to the NCC the critical information requirements. Advise the NCC of support requirements to maintain or enable response. |
| Public Information Management | <ul style="list-style-type: none"> Initiate the dissemination of public safety messages within their remit and/or for which they are the 'authoritative voice' using available communication channels. Initiate the dissemination of response specific information within their remit and/or for which they are the 'authoritative voice' using available communication channels. |

Limiting factors

1. Incomplete information on impacts, resources and needs.
2. Shortage of trained staff in all response agencies.
3. Recovery structure not in place, to allow joint-planning for transition to recovery.
4. Availability of lifeline utilities in the affected areas.

Resource needs

All requests for national support are to be directed to the NEMA NCC.

Note that additional resources may be controlled by CDEM Groups.

Information flow

As per the National CDEM Plan 2015 and CIMS.

Emergency Operations Centres (EOCs) are to provide information to Emergency Coordination Centres (ECCs).

ECCs will provide a collated return to the NCC.

Public information plan

Domestic

NCC and affected CDEM Group Public Information Managers are to engage with national and local media across all mediums (including social media) to;

1. Provide advice to the affected population on what to do and how to access support.
2. Reassure the affected population through the provision of updates on the response, and how people can support the response.

See "Consistent messages for CDEM" at <http://www.civildefence.govt.nz/cdem-sector/consistent-messages-for-cdem/>

National level Spokespeople

- Minister of Civil Defence
- Director CDEM

Communications

Email, landline and mobile phone remain the primary means of communication.

NCMC phone: s9(2)(g)(ii)

NCMC email: s9(2)(g)(ii)

NEMA webpage: <http://www.civildefence.govt.nz/>

Organisation

National response structure as per the National CDEM Plan 2015 and CIMS.

| | |
|-----------------------------|--------------------|
| Lead Agency | |
| National: | NEMA (through NCC) |
| Regional: | CDEM Groups |
| <u>Appointments</u> | |
| Director CDEM: | Gary Knowles |
| National Controller: | Roger Ball |

| Approval and distribution | |
|---------------------------------|------------------------------|
| Action Plan prepared by: | NCC Planning Function |
| Action Plan approved by: | Jo Guard Response Manager |

Released under the Official Information Act 1982

From: [Susan Shaw](#)
To: ^EXT: Jo Paterson; [xx@xxxx.xxxx.xx](#); [xxxx@xxxx.xxxx.xx](#)
Cc: s9(2)(g)(ii); [Graeme Blick](#)
Subject: West Coast - Severe weather warning - Potential imagery sources - 16 July 2021
Date: Friday, 16 July 2021 10:12:22 am
Attachments: [image001.png](#)
[image002.png](#)
[image003.png](#)
[image004.png](#)
[image005.png](#)

Not relevant to your request

Not relevant to your request

Kia ora,

We note the severe weather warning issued by MetService for the West Coast.

This email is to inform you that LINZ (now called Toitū Te Whenua Land Information New Zealand) is monitoring the situation, and is on standby should you need any assistance with aerial or satellite imagery.

Aerial imagery

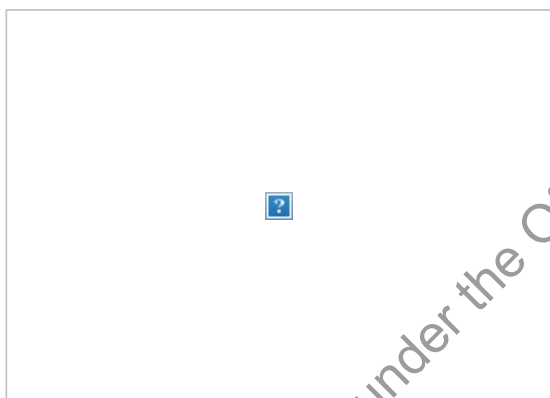
Attached is a draft specification for requesting aerial imagery during an emergency.

This may be of assistance if you wish to purchase aerial imagery. It is also the specification LINZ would use if you request our assistance to coordinate the capture, processing and delivery of the aerial imagery on behalf of West Coast CDEM.

Satellite imagery

We have reviewed the upcoming satellite flyover schedule for Sentinel and Landsat imagery, which is freely available.

In summary, it may be worth looking out for the Sentinel-2B imagery, due to be captured on Sunday 18th July at 10:28am NZT. See extent below.



Note the value of the imagery will depend on cloud cover at the time. Please let us know if you need further assistance from LINZ to view this.

| Name | What is it | Useful for | Estimated Capture Time NZ Time | Estimated Capture Time UTC | Accessible for use | Format |
|-------------|---|--|-----------------------------------|---|--------------------|----------------|
| Sentinel-1A | Synthetic Aperture Radar Resolution: 30m | Acquisition of imagery regardless of the weather. https://eos.com/find-satellite/sentinel-1/ | Not calculated | Thursday 22 July UTC | | Not calculated |
| Sentinel-1B | Synthetic Aperture Radar Resolution: 30m | Acquisition of imagery regardless of the weather. https://eos.com/find-satellite/sentinel-1/ | Not calculated | Thursday 22 July UTC North West Coast only | | Not calculated |

| | | | | | | |
|-------------|-------------------------------------|---|--|---|--|------------------------|
| Sentinel-2A | Multispectral Resolution: 10m | Acquisition of imagery for land monitoring. https://eos.com/find-satellite/sentinel-2/ | Not calculated | Thursday 22 July UTC | | Not calculated |
| Sentinel-2B | Multispectral Resolution: 10m | Acquisition of imagery for land monitoring. https://eos.com/find-satellite/sentinel-2/ | Sunday 18 July 10:28 NZT Wednesday 21 July NZT | Saturday 17 July 22:28 UTC Large parts of the West Coast Tuesday 20 July UTC All of West Coast | | Imaging Imaging |
| Landsat-8 | | https://eos.com/find-satellite/landsat-8/ | Not calculated | None | | |

Previous clear-sky imagery available (to use for comparison)

| Name | Estimated Capture Time NZ Time | Estimated Capture Time UTC |
|-------------|-----------------------------------|---|
| Sentinel-1A | Not calculated | Last covered the West Coast Saturday 10 July UTC |
| Sentinel-1B | Not calculated | Last covered the West Coast Thursday 15 July UTC |
| Sentinel-2A | Not calculated | Last covered part of the West Coast Thursday 15 July UTC More coverage Monday 12 July UTC |
| Sentinel-2B | Not calculated | Last covered part of the West Coast Saturday 10 July UTC, More coverage Wed 7 July |
| Landsat-8 | | None |

This information was gathered from <https://app.spectator.earth/acquisition-plan>

To view Sentinel and Landsat imagery, one option is to use Sentinel-hub <https://apps.sentinel-hub.com/eo-browser>

What are your the next steps?

If you need aerial or satellite imagery, please call the Duty Officer, Susan Shaw on [REDACTED] or direct on [REDACTED]

Also please provide us with an Area of Interest in any of these formats:

1. Mark up an area on a screenshot
2. Provide us access to your data via our AGOL account **sshaw_linz**
3. Add to our LINZ emergency imagery request [feature layer](#) or
4. Add via our LINZ emergency imagery request [webmap](#)

Ngā mihi nui,

Susan

LINZ Duty Officer

Susan Shaw (she/her)

Senior Resilience Advisor

Resilience Team | Location Information

xxxx@xxx.xxx.xx | Mobile [REDACTED]



Wellington Office, Level 7, Radio New Zealand House, 155 The Terrace
PO Box 5501, Wellington 6145, New Zealand

www.linz.govt.nz | data.linz.govt.nz



This message contains information, which may be in confidence and may be subject to legal privilege. If you are not the intended recipient, you must not peruse, use, disseminate, distribute or copy this message. If you have received this message in error, please notify us immediately (Phone 0800 665 463 or ~~xxx~~) and destroy the original message. LINZ accepts no responsibility for changes to this email, or for any attachments, after its transmission from LINZ. Thank You.

Released under the Official Information Act 1982

From: [Charlie Blanch \[NEMA\]](#)
To: [Simpson, Andrew](#); [Craig Monrad](#); [Duncan, Ian](#); [Callaghan, Paul](#); [Cole, Shane](#); ^WANGANUI: [Anthony Edwards](#); [Charlie Blanch \[NEMA\]](#); ^WestCoast: [Claire Brown](#); [Dan Neely - WREMO](#) (dan.neely@wremo.govt.nz); ^DOC: [Drew Coleman](#); [Doug Third](#); ^EXT: [Mark Crowe](#); [Michele Poole](#); [Mike Gillooly \[NEMA\]](#); ^CCC: [Mike Gillooly](#); ^fireandemergency: [Nick Pyatt](#); ^MSD: [Ronnie Gibson](#); [Ross Pringle](#); ^NRC: [Shona M](#); ^TPK: [Shaneen Simpson-Almond](#); [Allan Grigg](#); ^EXT: [Andrew Holden](#); ^MBIE: [Casey Hamiltonharrison](#); [Chris Lind \[NEMA\]](#); ^BOPRC: [Clinton Naude](#); ^DOC: [Ehebert](#); ^EXT: [Glenn Thompson](#); ^MDC: [Hamish Waugh](#); ^CDEM.Canterbury: [James Thompson](#); ^NRC: [Jenny C](#); [Paul Bourton](#); [Phil Mackay \(emofficer@mackenzie.govt.nz\)](mailto:emofficer@mackenzie.govt.nz); [Sarah Holland \[NEMA\]](#); ^S: [JOHN: Tim Chiswell](#); ^fireandemergency: [Aaron Waterreus](#); ^CSS: [Brenden Winder](#); ^EXT: [Alma Shaw](#); ^EMBOP: [Andrea Thompson](#); ^MBIE: [Jason Leppens](#); ^EXT: [Jason Hill](#); ^EXT: [Kate Hill](#); ^EMBOP: [Lee Hazlewood](#); ^EMBOP: [Lisa Glass](#); ^EXT: [Luci Swatton](#); ^GNS: [N Fournier](#); ^OTAGOCDEM: [Oliver Varley](#); ^TPK: [Panir](#); ^EXT: [Paul Manson](#); ^EXT: [Richard Hardie](#)
Cc: [Tom Kiel \[NEMA\]](#); s9(2)(g)(ii) [Paige Sims \[NEMA\]](#)
Subject: West Coast Severe Weather Event - EMAT Warning Order
Date: Friday, 16 July 2021 11:44:23 am
Attachments: [image001.jpg](#)
[2021-07-17 West Coast Severe Weather - EMAT Warning Order Appendix C.pdf](#)
[image002.png](#)

[IN-CONFIDENCE]

Further to the NWS Warning order please update your availability here: [REDACTED]

Ngā mihi | Many thanks

Charlie

Charlie Blanch ([him/his](#)) | Team Leader, Deployable Capabilities
National Emergency Management Agency Te Rākau Whakamāmaru
Mobile: [REDACTED] | www.linkedin.com/in/charles-blanch/ | www.civildefence.govt.nz
Level 7, TSB House, 147 Lambton Quay | PO Box 5010, Wellington 6045, New Zealand

Empowering communities before, during and after emergencies.



Released under the Official Information Act 1982

Appendix C – EMAT Warning Order (Form C)

NEMA will consider EMAT deployment requests against the context of the Emergency. This Warning Order is not a Deployment Order however may precede one and is to provide enhanced situational awareness to deployable EMAT staff.

| Ref | Descriptor | Comments | |
|-----|-----------------------|--|--|
| C1 | Time / Date: | 16 July 2021. 10:30hrs | |
| C2 | To: | EMAT Staff FENZ Operational Support and Logistics Staff NEMA Duty Team | |
| C3 | Issued by: | Charlie Blanch | |
| C4 | Ground | Area of Operations | West Coast |
| C5 | Event type | Severe Weather Event | |
| C6 | Situation | General | <p>Red Warning in place for Buller and Westland north of Fox Glacier</p> <ul style="list-style-type: none"> • 36 hours from 8:00pm Thursday to 8:00am Saturday. • Forecast: Expect 350 to 400 (increased from 330 to 380mm) of rain about the ranges, and 150 to 200mm about the coast. Peak rates of 20 to 30mm per hour expected during Friday and Saturday, especially in possible thunderstorms. <p>There are also severe weather warnings in place for heavy rain for the West Coast south of Fox Glacier, Nelson, Marlborough and the Canterbury headwaters, as well as strong wind warnings for Taranaki, Marlborough, Wellington, and the Wairarapa.</p> |
| C7 | Concept of Operations | Current Phase | <p>The West Coast Group's Emergency Coordination Centre and all West Coast District Emergency Operation Centres (Westland, Grey and Buller) have been activated. The Groups' website has been updated and public messaging is being developed. The issuing of an EMA was discussed last night. Draft text is being prepared for possible use today. NEMA is actively supporting the provision of public messaging as a priority this morning. A Senior REMA (Regional Emergency Management Advisor) is in place in</p> |

| | | | |
|-----|----------------------------------|--|---|
| | | | <p>Greymouth to support the West Coast CDEM Group.</p> <p>NEMA is activating the NCC at Mode 2 and has updated its website and social media channels (Facebook and Twitter) to reinforce the warning.</p> <p>The Ashburton EOC has activated in monitoring mode</p> <p>The Canterbury ECC is preparing to activate should it be required.</p> |
| | | Preliminary Tasks | Not known at this stage |
| | | Potential Deployment Scope | <p>If requested EMAT would look to deploy to the West Coast within the current weather window.</p> <p>Current availability on AIRNZ Christchurch to Hokitika 17 July 2021 1625hrs departure, with connecting flights for Auckland based staff.</p> <p>No connecting flights for Wellington based staff today.</p> |
| C8 | Timings | Expected duration | 3-5 days. |
| | | Notice to Move (NTM) | Please update your availability on the EMAT Cadre Summary link below |
| C9 | Coordinating Instructions | Ensure individual deployment readiness is maintained | |
| | | Update your availability - | |
| | | Any others | |
| C10 | Local EOC status | <p>Westland – Activated</p> <p>Grey – Activated</p> <p>Buller - Activated.</p> | |
| C11 | Group ECC status | Greymouth - Activated . | |
| C12 | NCC / NCMC status | NEMA NCC at Mode 2 | |
| C13 | Deployed NEMA staff | Sandra James, SI REMA, deployed to Greymouth 15 Jul 2021. | |
| C14 | Anticipated incident development | Surface flooding, slips, power and communication cuts, isolated communities, displaced persons | |
| C15 | Likelihood of deployment | High | |
| C16 | Additional information/ comments | Click or tap here to enter text. | |
| C17 | Required Actions | Update staff availability | |
| C18 | Point of contact | Charlie Blanch | |

From: [Sandra James \[NEMA\]](#)
To: [Gary Knowles \[NEMA\]](#); [s9\(2\)\(g\)\(ii\)](#); [NCC.Operations](#); [Roger Ball \[NEMA\]](#)
Cc: [s9\(2\)\(g\)\(ii\)](#)
Subject: Cancellation of request for NZDF Air Assets
Date: Saturday, 17 July 2021 4:37:52 pm
Attachments: [image001.jpg](#)

[UNCLASSIFIED]

Kia ora Gary,

As per our conversation can you please cancel the request for NZDF Air Assets to deliver essential groceries to Westport.

Ngā mihi

Sandra

Sandra James | Senior Regional Emergency Management Advisor

National Emergency Management Agency

Te Rākau Whakamarumarū

Mobile: [\[REDACTED\]](#) | SatPhone [\[REDACTED\]](#)

Level 2 CJESP | PO Box 956, Christchurch 8140, New Zealand www.civildefence.govt.nz

Empowering communities before, during and after emergencies.



Released under the Official Information Act 1982

From: [^BULLER: BDC PIM](#)
To: s9(2)(g)(ii); [Sandra James \[NEMA\]](#)
Subject: Fw: Emergency Mobile Alert Westport for Approval
Date: Saturday, 17 July 2021 7:37:53 pm
Attachments: [Emergency Mobile Alert Westport for Approval.docx](#)

Please circulate to all of Westport township and surrounds.

Released under the Official Information Act 1982

Emergency Mobile Alert Westport for Approval:

CIVIL DEFENCE: Due to rising river levels, people in Westport who haven't yet been evacuated, are advised to SHELTER IN PLACE. If there is risk to life, please call 111. For further information please go to <https://www.facebook.com/BullerCD> and <https://bullerdc.govt.nz>

Approved by Don Scott, Local Controller

Released under the Official Information Act 1982

From: [Sandra James \[NEMA\]](#)
To: [Roger Ball \[NEMA\]](#); s9(2)(g)(ii)
Subject: FW: GREY ECC SITREP 17.07.21 pm
Date: Saturday, 17 July 2021 4:03:45 pm
Attachments: [SITREP 17.07.21 pm.pdf](#)

[UNCLASSIFIED]

From: WCST-ECC-INTEL s9(2)(g)(ii)
Sent: Saturday, 17 July 2021 3:47 pm
To: Amelia Haskell <x@x>; Cecille <Cecille.Lee007@msd.govt.nz>;
x@x ^WCRC: Claire Brown <x@x.nz>; ^EXT:
Erica Andrews <x@x>; WCST-ECC-INTEL
s9(2)(g)(ii) >; jamie ruwhiu
x@x Jennifer Beatson <Jennifer.Beatson007@msd.govt.nz>; Jo
Paterson <x@x>; Julie Manderson <julie.manderson@education.govt.nz>;
^EXT: Lauren emanuel <x@x>; WCST-ECC-LOGISTICS
s9(2)(g)(ii) ; ^EXT: Matt Beavon <x@x>;
x@x Mike McEnaney <x@x>; WCST-ECC-
OPERATIONS s9(2)(g)(ii) ; ^EXT: CDEM West Coast Regional
Council s9(2)(g)(ii) WCST-ECC-PLANNING
<x@x>; Rachel Forsyth
s9(2)(g)(ii) ^MSD: RonnieGibson
<x@x>; Sandra James [NEMA] <Sandra.James@nema.govt.nz>;
Simon Chambers [NEMA] <x@x>; Taane J
<x@x>; Tearoha Cook <x@x>; WCST-ECC-
WELFARE s9(2)(g)(ii)
Subject: GREY ECC SITREP 17.07.21 pm
Hi there,
Attached is the Grey ECC SITREP 17.07.21 pm.
Kind regards,
Sue Aynsley
Intel Manager
Grey ECC

Released under the Official Information Act 1982

SITUATION REPORT

Completed by Intel



WEST COAST
EMERGENCY MANAGEMENT

GROUP

| | | | | | |
|----------------|------------------------|-----------------|-------------------------------------|---------------|---|
| Incident/Event | Severe Weather | EOC Location | Joint Emergency Coordination Centre | SITREP Number | 3 |
| Date | Saturday, 17 July 2021 | Time | 15.3020:33 | | |
| Author | Sue Aynsley | Contact Details | s9(2)(g)(ii) | | |

| EMERGENCY RESPONSE STATUS | | | | | | L | ↑ S ↓ |
|---------------------------|--------------------------|-------------------------------------|----------------------------|--------------------------|--|---|-------------|
| Level 1: Alert | Level 2: Activation | Level 3: Local Declaration | Level 4: Group Declaration | Level 5: Nat Declaration | | | |
| <input type="checkbox"/> | <input type="checkbox"/> | <input checked="" type="checkbox"/> | <input type="checkbox"/> | <input type="checkbox"/> | | | |

| EOC CONTACTS | | | |
|--------------------------|--------------|------------------|-----------------|
| Radio VHF Ch. | Telephone | Email | Satellite Phone |
| ESB2 | s9(2)(g)(ii) | s9(2)(g)(ii) | |
| Primary method of comms: | | Systems at Risk: | |

| SITUATION OVERVIEW |
|---|
| <p>Cause of emergency, geographic location, main impacts/consequences (succinct statement), escalating/de-escalating</p> <p>Extent or area affected – include map</p> <p>CODE RED: Severe Weather Warning West Coast Region. Weather situation is escalating Heavy Rain Warning – Friday night-Saturday morning. Worst in Buller region. 130-170mm of rain expected in the ranges from 2.30pm-early Saturday morning. Second swell of weather coming tomorrow Saturday – worst felt in Buller.</p> <p>Buller.</p> <p>Declared local state of emergency at 13.15hrs 16th July 2021. Potential 1-100yr event. Heavy rain has been falling since overnight Thursday 15th throughout the region. Escalating as at sitrep 1. Key areas affected currently, road closure at Inangahua (using Brown Ck detour), Granite Ck Karamea washed out road closed, surface flooding near St Canices area. Buller River height 10.2m at Te Kuha at 13:00hrs (level 1 warning is 7.4m – triggered at 7.30am this morning). Power and utilities functioning as at sitrep1</p> <p>Update as of 08.30 17/07/2021</p> <p>WESTPORT</p> <p>823 people displaced. 630 Homes evacuated. 484 Persons in Evac Centres Remainder in motels or staying with friends and family.</p> <p>GRANITY.</p> <p>No abnormal surge reported by local police. Usual amount of debris on road.</p> <p>LITTLE WANGANUI</p> <p>River is fast flowing but beginning to fall.</p> |

KARAMEA

Some surface flooding but no evacuations required as yet.

PEOPLE ASSESSMENT

| Sector | Displaced | Missing | Fatalities | Injured |
|--------|-----------|---------|------------|---------|
| Buller | 823 | 0 | 0 | 0 |
| | | | | |
| | | | | |
| | | | | |

DISPLACED

Evacuees, e.g. Welfare Accommodation, where, estimated time before re-occupation is possible

Note: Table information is appropriate

630 homes evacuated.

823 displaced

484 in Evac Centres

Lack of evac centres that will allow pets. South School only one to allow pets is full at 160 evacuees.

PEOPLES CRITICAL NEEDS

Are there any critical needs that should be outlined? Who is dealing with it/is it being dealt with?

Buller: Power generators available. St John on call

Supermarkets contacted – Limited amounts of bread and milk - 2 days' supply

COMMUNITY INFRASTRUCTURE NEEDS

Hospitals and medical centres

Status of these facilities, what impacts or consequences are occurring, are they managing

17-7 Coast Road will not be open tonight.

One from Grey Hospital awaiting air evac.

One to return to Reefton.

Westport Hospital overcrowded with patients sleeping on the floor

Rest homes

Status of these facilities, what impacts or consequences are occurring, are they managing

17-7 O'Connor Home is updating EOC hourly with conditions and patient welfare reports.

No concerns in Grey and Westland

Education Institutions

Have schools closed etc

N/A School Holidays

Community Infrastructure Needs

Are there any critical needs that should be outlined? Who is dealing with it/is it being dealt with?

N/A

PROPERTY STATUS

Residential Housing

Numbers and locations of seriously damaged and condemned

Assessments to be carried out when safe to proceed.

Commercial Property

Numbers and locations of seriously damaged and condemned, estimated time of closure

Assessments to be carried out when safe to proceed.

Housing and Property Needs

Are there any critical needs that should be outlined? Who is dealing with it/is it being dealt with?

Buller: 17-7 12:40pm – Team 4 to EOC coms check. Commending tasking of persons removal from Snodgrass by boat.

TRANSPORT INFRASTRUCTURE NEEDS

Road Status

Detail the extent of damage, the area affected, response taken, and length of time to reinstate – Local roads and State Highway

17-7

Current status of West Coast State Highways as follows:

Current status of West Coast State Highways as follows:

- SH6 Upper Buller Gorge (Murchison to Inangahua): Closed due to flooding. Update 5pm. – No detour
- SH6 Inangahua Dip. Closed due to flooding. Update 5pm. Detour via Browns Creek Road. Contractors continue to assess Browns Creek Road and it is possible that this road will be closed.
- SH6 Lower Buller Gorge: Closed due to slips and flooding at multiple locations. Update 5pm
- SH6 Coast Road: Westport to Rapahoe: Closed due to significant slips at 9 Mile, Meyville Bay. Slip clearance underway and progressing well. Update 5pm at the latest.
- SH7 Lewis Pass: Closed between Hanmer Turnoff and Springs Junction. Update 5pm (North Canterbury). Note now open between Waipara and Hanmer Turnoff

- SH65: O'Sullivan's Bridge to Shennendoah. Closed due to slips and flooding. (Tasman)
- SH67 Buller Bridge Closed. Update 6pm
- SH67 North of Westport: Road Closed

- SH73 Arthurs Pass to Jacksons: Open
- SH7 Ikamatua to Stillwater. Open

Note that there is no road access to Westport. Routes off the West Coast are available via Arthurs Pass and the Haast Pass.

Road Status

Detail the extent of damage, the area affected, response taken, and length of time to reinstate – Local roads and State Highway

Airport Status

Detail the extent of damage, the area affected, response taken, and length of time to reinstate

17-7 Westport Airport closed until further notice. Civil Aviation advised by Airport Manager

Generator supply options investigated where needed, 3 x generators available from BEL for CDEM use.

Port Status

Detail the extent of damage, the area affected, response taken, and length of time to reinstate – status of the bar

Buller 17/7 - Coastal Navigation Warning issued by RCCNZ via Harbourmaster at 9.30am. Dredge close to top of wharf – Harbourmaster will continuously review and advise if further concerns

Rail Status

Detail the extent of damage, the area affected, response taken, and length of time to reinstate

Buller 17-7 No damage reported as yet. Lights out at Pines

Transport Infrastructure Needs

Are there any critical needs that should be outlined? Who is dealing with it/is it being dealt with?

Released under the Official Information Act 1982

Lifeline Utility Status

Electricity

Detail the extent of damage, the area affected, response taken, and length of time to reinstate

No reports of issues

17-7 Karamea has lost power and community generator will be operational early afternoon as reported by BEL 11:19am. Power for 8 hours running and attempting to access more fuel but helicopter unable to fly due to high winds.

3 x generators available from BEL for CDEM use.

Telecommunications

Detail the extent of damage, the area affected, response taken, and length of time to reinstate

Police repeater down.

Water

Detail the extent of damage, the area affected, response taken, and length of time to reinstate

Waste Water

Detail the extent of damage, the area affected, response taken, and length of time to reinstate

Areas in Westport are experiencing toilet back-ups as the sewer system is full due to stormwater ingress. Residents will be advised that this issue will continue until floodwaters recede and to minimise use of toilets

Power to several pump stations has been isolated by ESL. Consequences of this are sewer overflows from these pump stations – Roebuck St (by Buller Bridge) and Orowaiti #5 (Cnr Eastons Rd and Domett St). Coms advised to share message regarding potential contamination of stormwater including residents to be advised to stay out of all floodwaters

17-7 Possible rupture to sewer main (or water main) opposite 28 Pakington Street – waiting for update

Westport residents have been advised to conserve water and not to use dishwashers etc until further notice. Also to minimise flushing of toilets and taking showers.

Petroleum

Detail the extent of damage, the area affected, response taken, and length of time to reinstate

With increase of flood water there is a possibility that BP Westport will be inundated. This will become an environmental issue.

Lifeline Utility Needs

Are there any critical needs that should be outlined? Who is dealing with it/is it being dealt with?

Buller EOC has notified ECC that Westport is running low on staples such as bread and milk.

A NH90 has been requested from the Defence Force to assist with distribution. Bad weather means this will not fly in until Sunday morning

Released under the Official Information Act 1982

Environmental Status

Waste and pollution

Debris, garbage and spills, issues with large scale removal and processing of

17-7. 9.30 Buller - Debris and potential contaminated items being washed down Buller River - Coastal Navigation warning issued at 09:30hrs

Farming community and agriculture

Extent of impact on the farming community and response taken

17-7 Buller - Usual precautions being taken

Pet needs - SPCA has room for cats, 6 dogs can be housed at the pound.

██████████ - MPI on route to Buller (not sure how) - assuming regarding stock losses

Environmental Needs

Are there any critical needs that should be outlined? Who is dealing with it/is it being dealt with?

Released under the Official Information Act 1982

Recovery Status

Summary

List any activity that has occurred or needs to occur. Has a Local Recovery Manager been appointed?

Planning

Plans

Summary of Response Coordination Plan (briefing times, deadlines, key EOC activities)

Buller EOC has requested evacuees stay at Centres until a better idea of the effects of flooding and they can then brief the residents.

Police reports some residents have returned home and may prompt a second round of evacuations by emergency services

Potential Issues

Factors that may affect the response/recovery positively or negatively

17-7 Insufficient capacity at Welfare Centres. Phelan Hall is available to be activated if needed.

Hazards and Warnings

Include information on the hazard, such as the latest MetService warnings/information etc

Released under the Official Information Act 1982

Severe Weather Warnings & Watches

Issued at 9:51am Saturday 17 Jul 2021

RED WARNING for heavy rain remains for Buller. Heavy rain and northerly gales for many parts of central and northern New Zealand

An active front over the Tasman Sea moves slowly eastwards across central and northern New Zealand today, followed by a broad trough on Sunday. This front has brought heavy rain to many parts of central New Zealand and is expected to bring further heavy rain and northerly gales to central and northern areas.

A RED WARNING remains in force for heavy rain in Buller. Further flooding is quite likely in some areas, as are slips and disruption to transport, and power outages. Some communities could become isolated. Also, severe northerly gales about parts of central New Zealand could damage trees, powerlines and unsecured structures, and make driving hazardous.

People are advised to stay up to date with the latest forecasts in case any changes are made, or further areas are added.

Heavy Rain Warning

This rain is expected to cause dangerous river conditions and significant flooding. Slips and floodwaters are likely to disrupt travel, making some roads impassable and possibly isolating communities.

Area: Buller

Valid: 18 hours from 9:00am Saturday to 3:00am Sunday

Forecast: Expect a further 70 to 120mm of rain about the ranges on top of what has already fallen, with 40 to 70mm near the coast. Peak intensities of 15 to 25mm/h about the ranges this morning, then 10 to 15mm/h from this afternoon.

Heavy Rain Warning

Heavy rain may cause streams and rivers to rise rapidly. Surface flooding and slips are also possible and driving conditions may be hazardous.

Anticipated Situation Development

How is the event anticipated to evolve


17-7 Heaviest rain in Buller from between 10.00 and 14.00 with a prediction of 70-100mm. Chance of falls up to 130mm in some areas. People not in Westport's compulsory evacuation zones should be prepared to evacuate at any time over the next 12-24hrs

Priority Actions

List the key priorities for the management of the response over the next 24 hours or period as set by the Local/Group Controller

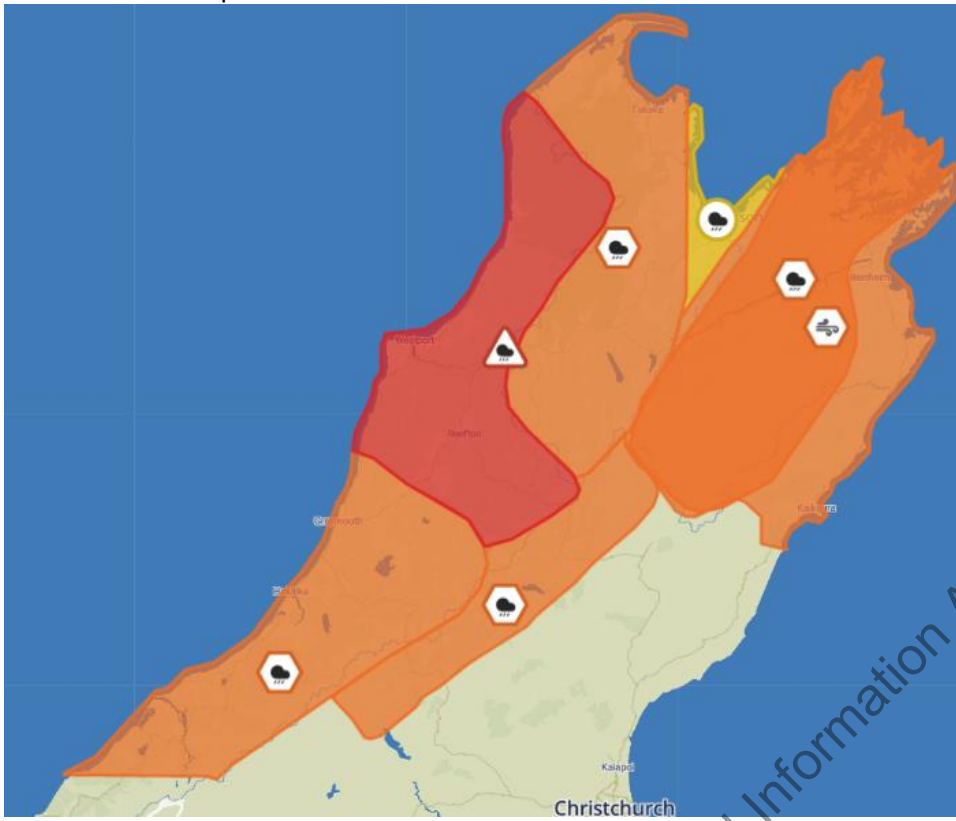
Refer to Buller EOC

The next SITREP will be issued at

| | | | |
|-----------------|----------------------|-----------|---|
| Date | Sunday, 18 July 2021 | Time | 3.30 |
| Controller Name | John Canning | Signature |  |

Appendix 1:

[Add appendices here for items such as maps]
Weather Alert Map



Released under the Official Information Act 1982

From: [WCST-ECC-CONTROLLER](#)
To: s9(2)(g)(ii) 3(2)(g)(ii)
Subject: FW: sit rep
Date: Saturday, 17 July 2021 6:08:06 am
Attachments: [Outlook-l0mc22ot.jpg](#)
[SITREP 16-07-21 #4 Buller.docx](#)

From: WCST-ECC-INTEL s9(2)(g)(ii)
Sent: Saturday, 17 July 2021 4:58 AM
To: WCST-ECC-OPERATIONS s9(2)(g)(ii); WCST-ECC-LOGISTICS
s9(2)(g)(ii); WCST-ECC-PLANNING
s9(2)(g)(ii); WCST-ECC-CONTROLLER
s9(2)(g)(ii)
Subject: FW: sit rep

From: bdc.intel s9(2)(g)(ii)
Sent: Saturday, 17 July 2021 4:56 AM
To: WCST-ECC-INTEL s9(2)(g)(ii)
Subject: sit rep

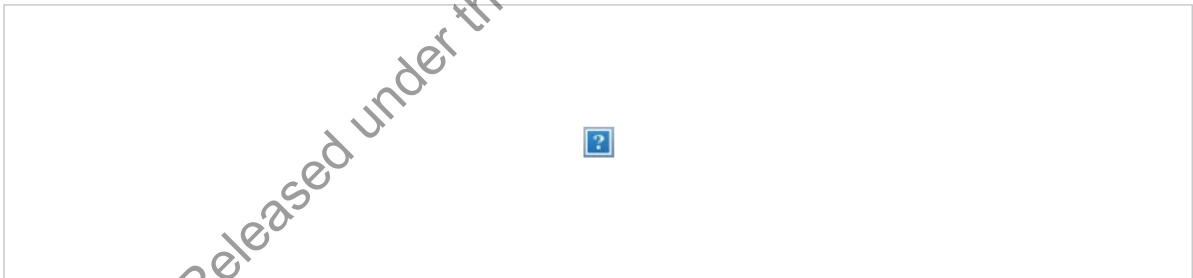
Intel/Planning Manager
Email s9(2)(g)(ii)

Buller Emergency Operations Centre | Phone 03 789 7999

Intelligence Function: [REDACTED]

Planning Function: [REDACTED]

Email Disclaimer: This correspondence is for the named person's use only. It may contain confidential or legally privileged information or both. No confidentiality or privilege is waived or lost by any mistransmission. If you receive this correspondence in error, please immediately delete it from your system and notify the sender. You must not disclose, copy or relay any part of this correspondence if you are not the intended recipient. Any views expressed in this message are those of the individual sender, except where the sender expressly, and with authority, states them to be the views of Buller Civil Defence



Released under the Official Information Act 1982

SITUATION REPORT

Completed by Intel



WEST COAST
EMERGENCY MANAGEMENT

GROUP

| | | | | | |
|----------------|--------------------------------|-----------------|---------------------|---------------|---|
| Incident/Event | Severe weather event red alert | EOC Location | Buller District EOC | SITREP Number | 4 |
| Date | Saturday, 17 July 2021 | Time | | 04:00hrs | |
| Author | Intel Buller | Contact Details | | | |

EMERGENCY RESPONSE STATUS

| | | | | |
|---|--|--|---|---|
| Level 1: Alert <input type="checkbox"/> | Level 2: Activation <input type="checkbox"/> | Level 3: Local Declaration <input checked="" type="checkbox"/> | Level 4: Group Declaration <input type="checkbox"/> | Level 5: Nat Declaration <input type="checkbox"/> |
|---|--|--|---|---|

EOC CONTACTS

| Radio VHF Ch. | Telephone | Email | Satellite Phone |
|--------------------------|-----------|------------------|-----------------|
| ESB2 | | | |
| Primary method of comms: | | Systems at Risk: | |

SITUATION OVERVIEW

Cause of emergency, geographic location, main impacts/consequences (succinct statement), escalating/de-escalating

Extent or area affected – include map

Declared local state of emergency at 13:15hrs 16th July 2021. Potential 1-100yr event. Heavy rain has been falling since overnight Thursday 15th throughout the region. Escalating further since sitrep 1 with compulsory evacuations commenced in Westport at 1800hrs. Key areas affected currently, road closure at Inangahua (using Brown Ck detour), Granite Ck Karamea washed out road closed, surface flooding, slip closed Coast Rd 6.30pm and SH7 at Reefton 5.40pm also closed with a detour available to Greymouth. Buller Gorge closed by NZTA @2130. Buller River height 10.2m at Te Kuha as at 13:00hrs (level 1 warning is 7.4m – triggered at 7.30am this morning). River height at 0300hrs was 11.319m and flow 7115 cum/s(triggered level 2 of 11m at 0130). Power and utilities functioning as per-sitrep1. Mohikinui at 6.5m. Evacuation as needed at Seddonville. Currently holding @0215. Karamea at 5.3m

PEOPLE ASSESSMENT

| Sector | Displaced | Missing | Fatalities | Injured |
|--------|-----------|---------|------------|---------|
| | 0 | 0 | 0 | 0 |
| | | | | |
| | | | | |

DISPLACED

Evacuees, e.g. Welfare Accommodation, where, estimated time before re-occupation is possible

Note: Table information is appropriate

Evacuation areas include: see attached maps

Capacity is South school 160, salvation army 100, st canices 110, Westport field station opening to take overflow

PEOPLES CRITICAL NEEDS

Are there any critical needs that should be outlined? Who is dealing with it/is it being dealt with?

Several calls from emergency services regarding critical needs and relocation of people at this sitrep. Welfare available for calls. Power generators available, St Johns on call

Released under the Official Information Act 1982

COMMUNITY INFRASTRUCTURE NEEDS**Hospitals and medical centres**

Status of these facilities, what impacts or consequences are occurring, are they managing

Coast Rd will not be open tonight

Rest homes

Status of these facilities, what impacts or consequences are occurring, are they managing

O'Connor Home – is updating EOC hourly with conditions and patient welfare reports. Will reassess on Saturday morning if help needed.

Education Institutions

Have schools closed etc

School holidays.

Community Infrastructure Needs

Are there any critical needs that should be outlined? Who is dealing with it/is it being dealt with?

None known

PROPERTY STATUS**Residential Housing**

Numbers and locations of seriously damaged and condemned

None at current time

Commercial Property

Numbers and locations of seriously damaged and condemned, estimated time of closure

None at current time

Housing and Property Needs

Are there any critical needs that should be outlined? Who is dealing with it/is it being dealt with?

Evacuation centres opened at South School, Carters Beach Top 10, St Canices School for those needing to leave their homes due to flooding. Red Cross and Welfare involved. Further evacuation places are being considered including Pulse Energy Centre, Phelan Hall, Former Holcim site offices and Sergeants Hill Hall. SAR, Defence Force personnel and the Police have executed evacuation plan. Salvation Army Hall opened for evacuees at 9pm 16th.
Records are being kept of evacuee numbers and locations. Estimates of 500-1000 people
10pm - If the Buller Medical (Hospital) need to be evacuated, Saint Chapel Dellaca is being heated up in the next few hours. This facility has a kitchen, disability entrance and heating.
Physical check of welfare centres reveals they are coping well.

TRANSPORT INFRASTRUCTURE NEEDS

Road Status

Detail the extent of damage, the area affected, response taken, and length of time to reinstate – Local roads and State Highway

No Closed Road in Greater Westport area.
Detour at Browns Creek in use at Inangahua.
Granite Creek road closed Little Wanganui
Buller Gorge – minor slips and surface flow reported. Closed by NZTA at 2130
SH6 Coast Rd closed – confirmed at 18:30hrs (slips). SH7 closed at Stillwater 17:40hrs detour through Taylorville
Flooding at Stephens Rd reported 20:00hrs – signage is in place
Regular inspections occurring. Westreef keeping us informed of developments
Road to Carters beach has surface flooding. Signs are out.recommended to avoid.
Maimai valley road bridge out - Minimal impact to network
Punakaiki reported in at 20:44hrs - Rivers still ok. Radio contact made with Westport and Greymouth today. Two road closures at Meybille Bay and Nine Mile mean they're isolated. The co-ordinators will do another check in the morning.
Water on state highway just past Orowaiti bridge. One lane open.

Airport Status

Detail the extent of damage, the area affected, response taken, and length of time to reinstate

No damage – to check in morning regarding potential for inundation or debris from surges

Port Status

Detail the extent of damage, the area affected, response taken, and length of time to reinstate – status of the bar

No damage
10.30 16/7 harbourmaster reports tide gauge at lagoon 4.5m, water over yacht club car park.
Dredge secured.

Rail Status

Detail the extent of damage, the area affected, response taken, and length of time to reinstate

No damage reported as yet

Transport Infrastructure Needs

Are there any critical needs that should be outlined? Who is dealing with it/is it being dealt with?

N/A

Lifeline Utility Status

Electricity

Detail the extent of damage, the area affected, response taken, and length of time to reinstate

Normal operation

Generator supply options investigated where needed, 3 x generators available from BEL for CDEM use. Pump available from Nelson 300m³/hr if needed.

Telecommunications

Detail the extent of damage, the area affected, response taken, and length of time to reinstate

Sand bags being installed at the Westport exchange building. No other issues reported

Water

Detail the extent of damage, the area affected, response taken, and length of time to reinstate

Functioning

Waste Water

Detail the extent of damage, the area affected, response taken, and length of time to reinstate

Areas in Westport are experiencing toilet back-ups as the sewer system is full due to stormwater ingress. Residents will be advised that this issue will continue until floodwaters recede and to minimise use of toilets. North side of Domett St, reported sewer issues at 20:30pm with raw sewage coming into people's houses through their toilets....not verified. WestReef, welfare & PIM advised to communicate that evacuation may be necessary if this is occurring and to contact Westreef immediately.

Power to several pump stations has been isolated by ESL. Consequences of this are sewer overflows from these pump stations – Roebuck St (by Buller Bridge) and Orowaiti #5 (Cnr Eastons Rd and Domett St). Coms advised to share message regarding potential contamination of stormwater including residents to be advised to stay out of all floodwaters.

Petroleum

Detail the extent of damage, the area affected, response taken, and length of time to reinstate

Normal operation

Lifeline Utility Needs

Are there any critical needs that should be outlined? Who is dealing with it/is it being dealt with?

Environmental Status

Waste and pollution

Debris, garbage and spills, issues with large scale removal and processing of

N/A

Farming community and agriculture

Extent of impact on the farming community and response taken

Usual precautions being taken

Pet needs – SPCA has room for cats, 6 dogs can be housed at the pound. Reports of stock in danger at Whitecliffs with animal control recommendation that they be left as it is too dangerous to try to get them out.

Environmental Needs

Are there any critical needs that should be outlined? Who is dealing with it/is it being dealt with?

N/A

Released under the Official Information Act 1982

Recovery Status

Summary

List any activity that has occurred or needs to occur. Has a Local Recovery Manager been appointed?

Planning

Plans

Summary of Response Coordination Plan (briefing times, deadlines, key EOC activities)

Evacuations completed and welfare centres opened as required as required provided with any assistance needed.

Concern over effects of tide and sea conditions with next high tide 3.1m at 03:40hrs 17th
3x EMAT staff arrived at 0030 to assist planning

Potential Issues

Factors that may affect the response/recovery positively or negatively

Further areas needing evacuation. Residents that resist evacuation. Insufficient capacity at Welfare Centres

Hazards and Warnings

Include information on the hazard, such as the latest MetService warnings/information etc

- MetService issued a Red Warning for Heavy Rain for Buller and Westland north of Fox Glacier regions. Heavy Rain Warning

For Buller and Westland from Otira northwards, expect a further 150 to 200mm of rain about the ranges on top of what has already fallen, with 70 to 100mm near the coast. Peak intensities of 20 to 30mm/h and possible thunderstorms. This brings expected rainfall totals for the event here to 350 to 400mm in some places, and up to 500mm about higher peaks. This area of rain continues into early Saturday evening. For Westland north of Fox Glacier and south of Otira, expect a further 90 to 130mm of rain about the ranges on top of what has already fallen, with 50 to 70mm near the coast. Peak intensities of 20 to 30mm/h and possible thunderstorms. This brings expected rainfall totals for the event here to 300 to 400mm in some places, and up to 500mm about higher peaks. This area of rain should ease late Saturday morning.

This rain is expected to cause dangerous river conditions and significant flooding. Slips and floodwaters are likely to disrupt travel, making some roads impassable and possibly isolating communities.

Issued at: 8:58pm Fri 16 Jul

Next update: 10:00am Sat 17 Jul

Strong north to northwest winds are forecast to be severe at times, with gusts of 120 km/h in exposed places. Further northwest gales possible in exposed places of Nelson through Saturday.

Strong wind gusts could damage trees, powerlines and unsecured structures. Driving may be hazardous, especially for high-sided vehicles and motorcycles.

Issued at: 8:58pm Fri 16 Jul

Next update: 10:00am Sat 17 Jul

Other Rivers, Mokihinui 6.5 04:00hrs 17th, Karamea 5.3m

Anticipated Situation Development

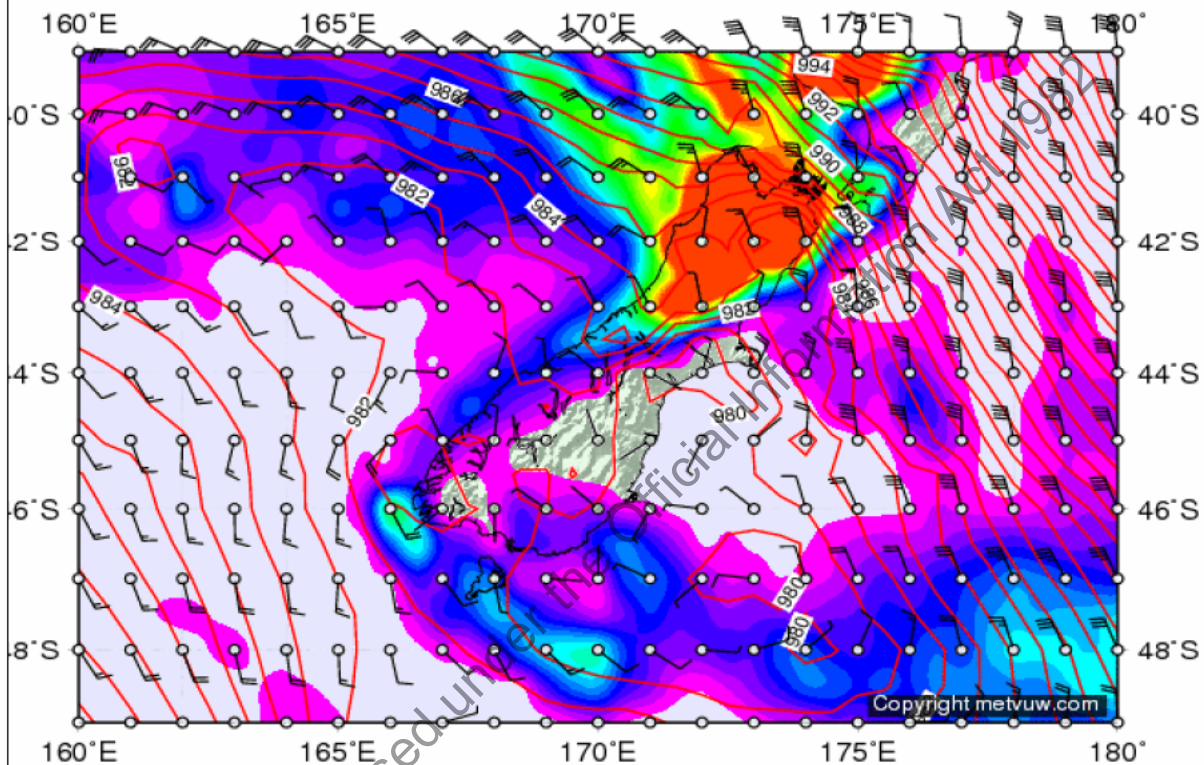
How is the event anticipated to evolve

Potential for further rise in river levels and flow over the next 24hrs. This combined with seas and tide may escalate flooding concerns.

18-hr forecast of MSLP (hPa), surface wind (kts) and 6-hr accumulated rainfall (mm)

Valid for:- 1200 NZST Saturday 17 July 2021

Forecasts issued at:- 1800 NZST Fri 16 Jul 2021 (0600 GMT Fri 16 Jul 2021)



Plotted by James McGregor

SEA CONDITIONS

Poor and possibly dangerous sea conditions such as strong winds & a big swell height 2-3+ metres.

Concern about sea surge in Westport is one of the items that prompted evacuations ahead of next high tide at 03:40hrs Saturday 17th.

Today: Northerly 40 knots but 20 knots south of Abut Head, rising to 30 knots in the south late evening. Sea very rough in the north. Northerly swell 4 metres. Long period southwest swell 2 metres. Poor visibility in periods of rain, with possible thunderstorms.

Saturday: Northerly 40 knots but 30 knots south of Abut Head. Changing northwest 25 knots everywhere early morning, easing to variable 10 knots in the south late morning. Becoming westerly 20 knots everywhere this evening. Very rough sea in the north, easing. Northerly swell rising to 5 metres for a time. Long period southwest swell 2 metres, easing. Poor visibility in periods of rain. Possible thunderstorms in the south in the morning then again in the evening in the north.

Sunday: Southwest 15 knots, easing to variable 10 knots for a time in the morning. Moderate northwest swell.

Issued: 10:50pm Friday 16 Jul 2021

Priority Actions

List the key priorities for the management of the response over the next 24 hours or period as set by the Local/Group Controller

Continue Evacuations and assess need for further evacuations
Monitoring of River Levels and Flow
Assessment of flood prone sites
Repeat as above

The next SITREP will be issued at

| | | | |
|-----------------|------------------------|-----------|---------|
| Date | Saturday, 17 July 2021 | Time | 7:00hrs |
| Controller Name | | Signature | |

Released under the Official Information Act 1982

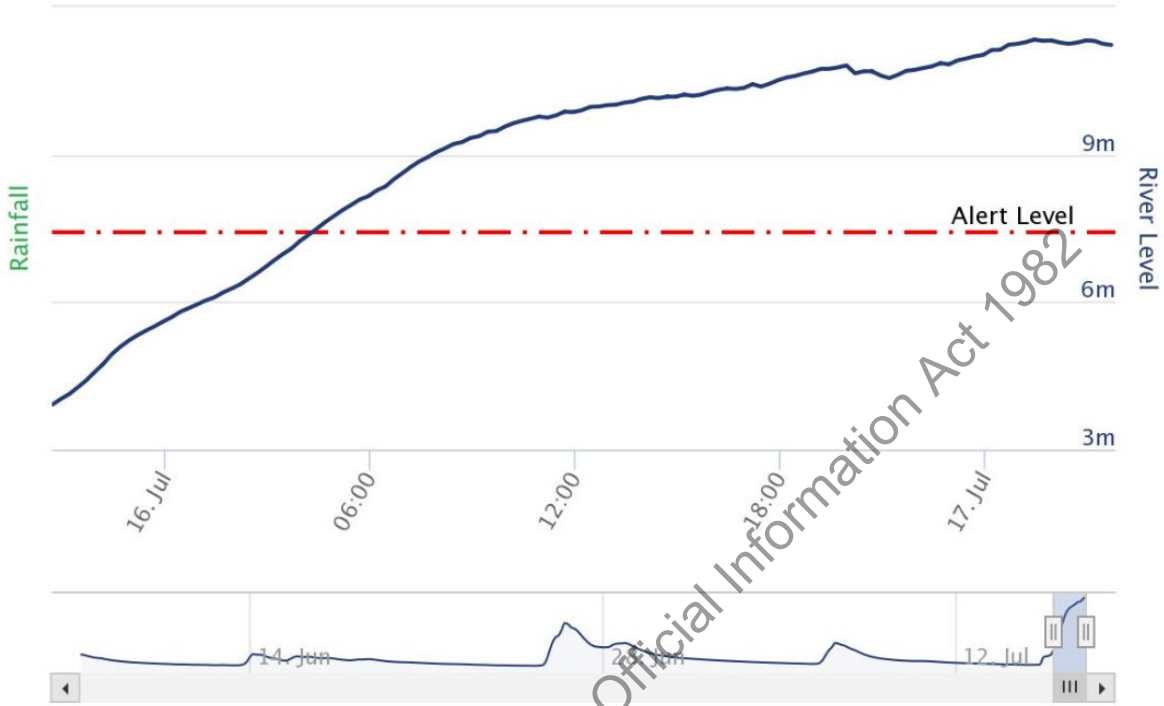
Appendix 1:

[Add appendices here for items such as maps]

River level for Buller Rv at Te Kuha

Zoom **7 Days** 14 Days 30 Days All

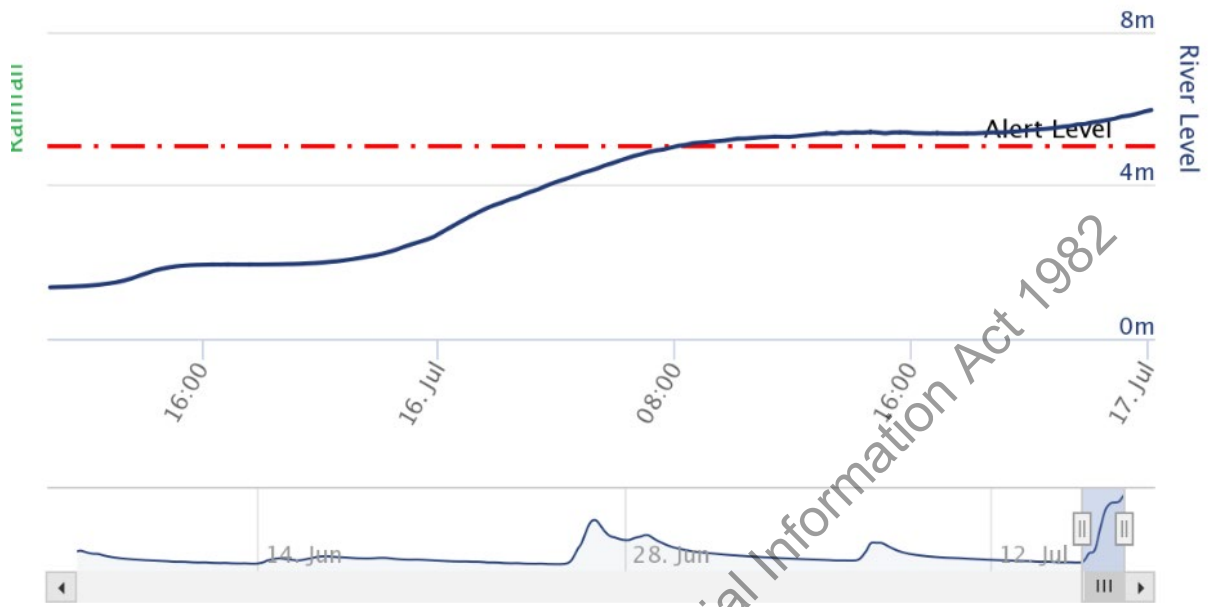
— River Level ● Rainfall - Buller Rv at Bald Hill



River level for Buller Rv at Woolfs

Zoom **7 Days** 14 Days 30 Days All

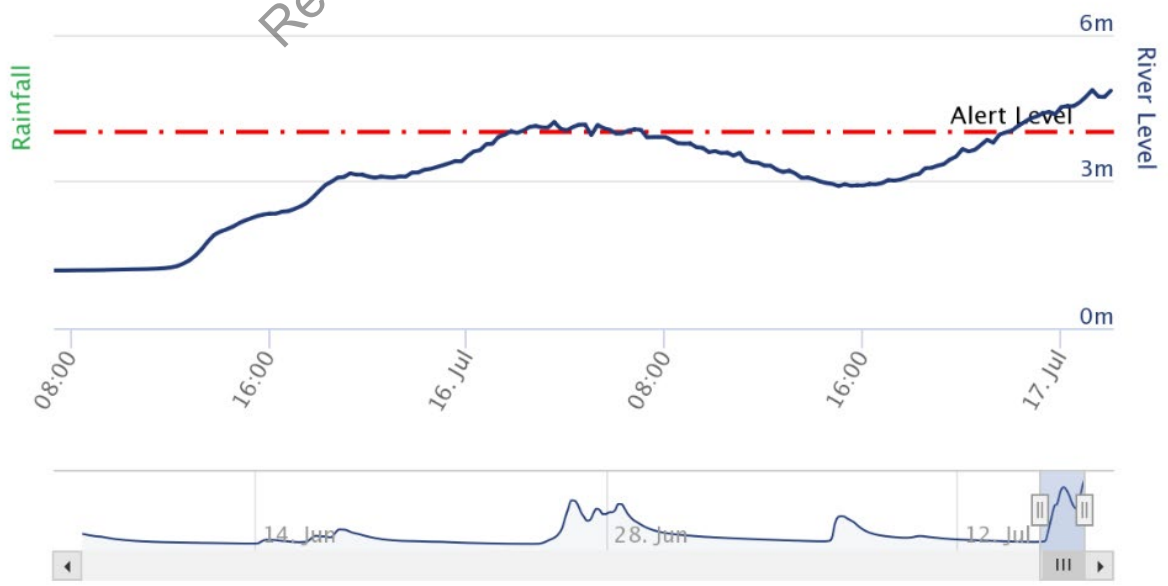
— River Level ● Rainfall - Inangahua Rv at Brunner Range



River level for Karamea Rv at Gorge (NIWA)

Zoom **7 Days** 14 Days 30 Days All

— River Level ● Rainfall - Karamea Rv at Garibaldi



Released under the Official Information Act 1982



AREA 1A
 Menzies Street – entire street
 Roebuck Street – entire street
 Balance Street – entire street
 Stout Street – entire street
 Stafford Street – Houses 1 – 11
 Queen Street – Houses 148 – 188
 Disraeli Street – Houses 10 - 34
 Russell Street – Houses 145 – 153
 Peel Street – Houses 148 – 175
 Romilly Street – Houses 170 - 189

AREA 1B – Additional Houses
 Hughes Place – All houses
 Queen Street – Houses 140 – 148
 Russell Street – Houses 143 - 137
 Peel Street – Houses 136 – 167
 Romilly Street – Houses 166, 168, 177

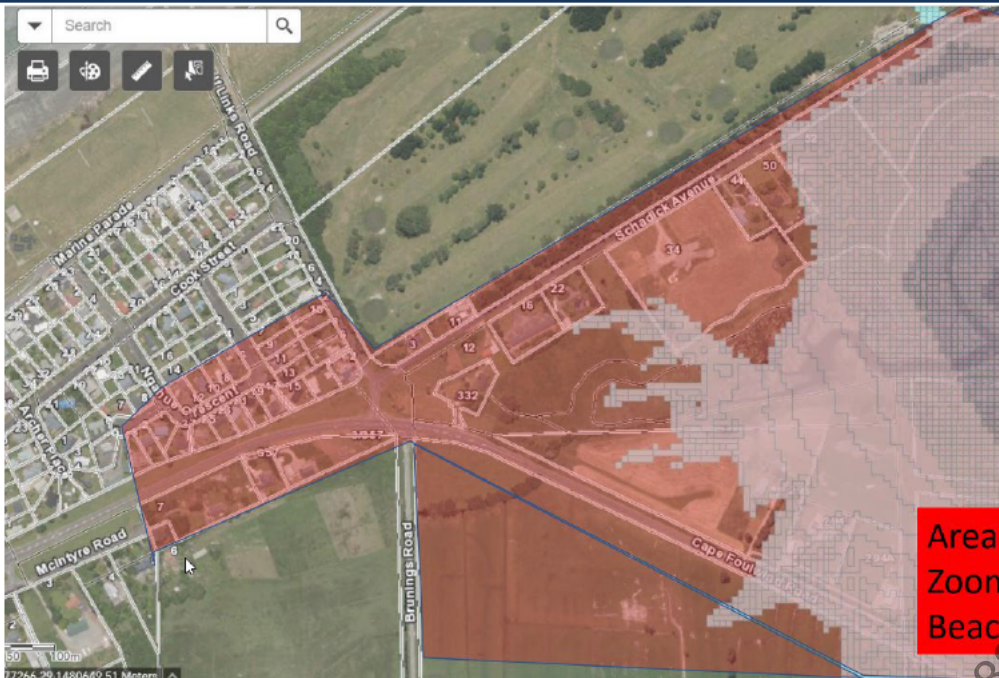
**Area 1A & 1B:
 Domain Area**



Tiphead Road – [redacted]
 house [redacted]

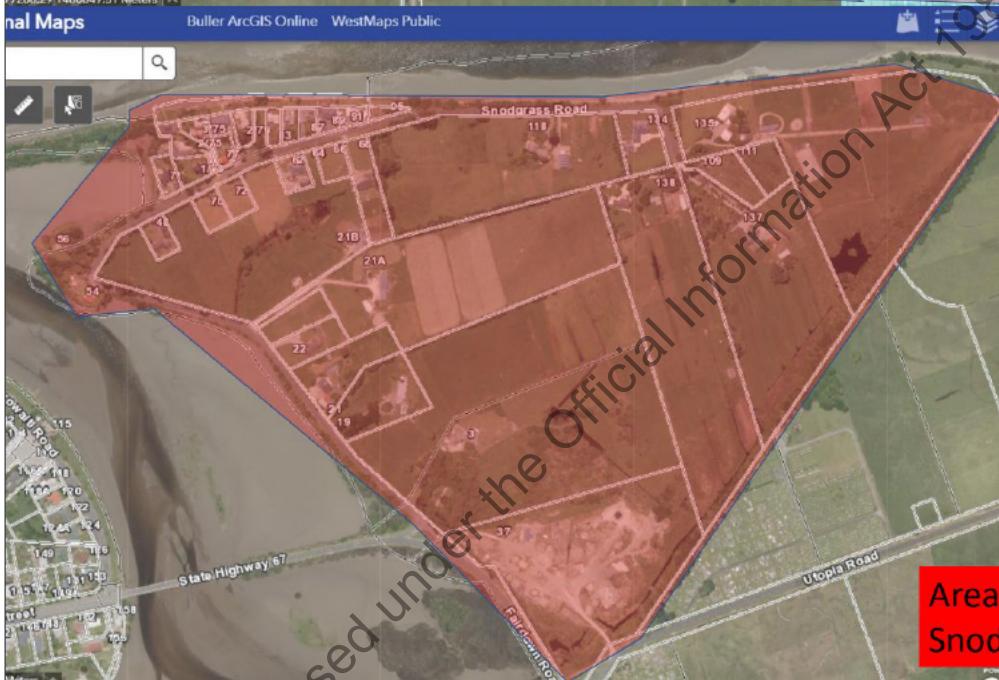
**Area 2:
 Greater Carters
 Beach including
 Rural Areas**

Released under the Official Information Act 1982



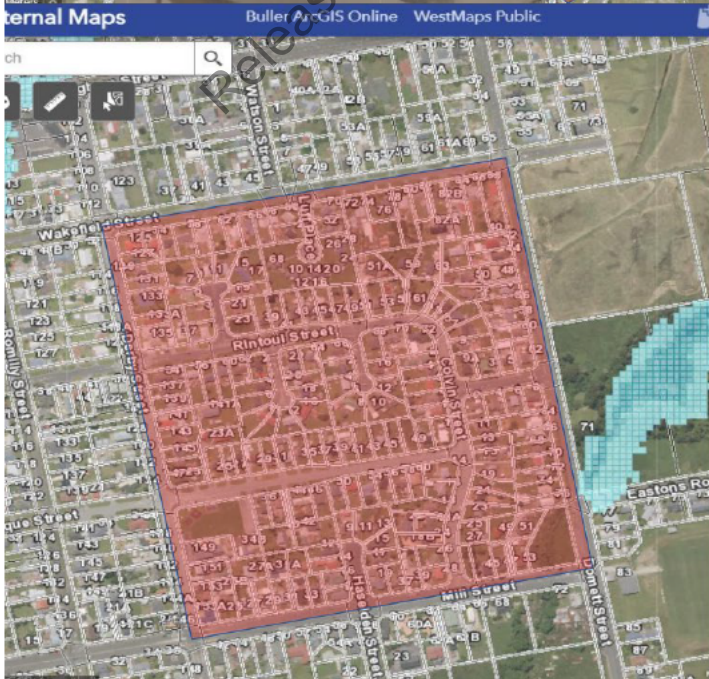
Tiphead Road – entire Road i
 entire street
 Ngahue Street + Monro Place (entire streets)
 Golf Links Road – Houses 2 – 16
 332 - 3/357 Cape
 Foulwind Road

**Area 2:
 Zoom of Carters
 Beach Houses**



Entire
 Snodgrass
 Road –
 Houses 1-138

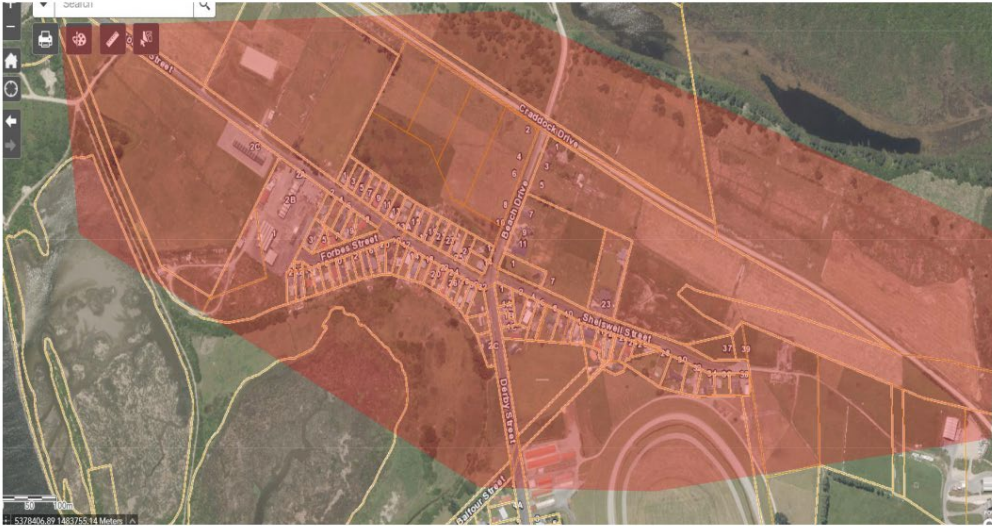
**Area 4:
 Snodgrass Area**



Wakefield Street – Houses 88 – 125
 Luff Place – All houses
 Rintoul Street – Houses 54 – 72
 Colvin Street – Houses 1 – 28
 Fonblanque Street – Houses 25 – 60
 Haselden Street – Houses 9 – 19
 Mill Street – Houses 25 – 53
 Larsen Street – Houses 2 - 8
 Domett Street – Houses 44 - 81

**Area 3:
 Mill/Derby/
 Wakefield/
 Domett Area**

Area 5 – Craddock, Shelswell, Forbes Coates, Derby and Beach Drive



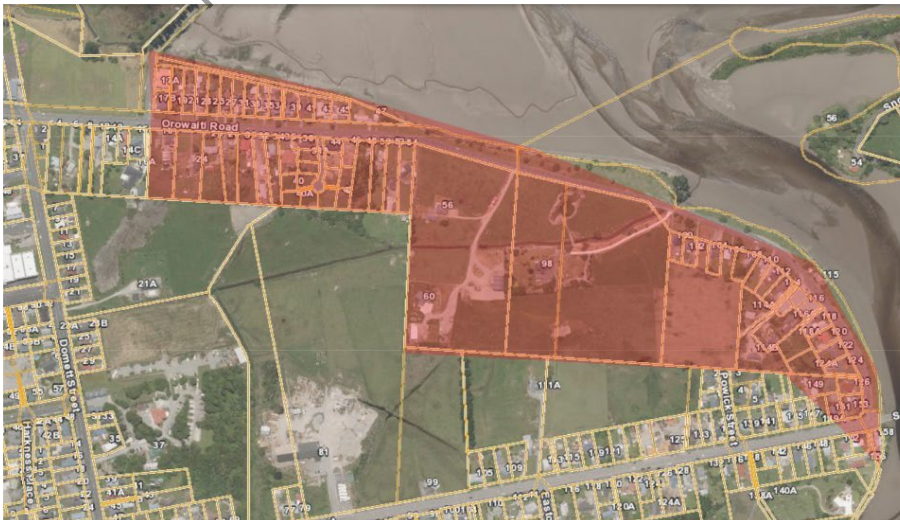
- Craddock Drive (entire street)
- Shelswell Street (entire street)
- Forbes Street (entire street)
- Coastes Street (entire street)
- Derby Street (Houses 1 – 38)
- Beach Drive (entire street)

Area 5 – Gladstone, Bright – Derby Street



- Gladstone Street (entire street)
- Salisbury Street (entire street)
- Queen Streets (Houses 1 – 23)
- Russell Street (Houses 1 – 15)
- Peel Street (Houses 1-20)
- Romily Street (Houses 1-45)
- Bright Street – (Houses 15 – 53)

Area 6 – Orowaiti Road



- Orowaiti Road (Houses 1 – 153) Entire Road

Area 7 – Kawatiri Place and lower Eastons Road



Released under the Official Information Act 1982

From: Jo Guard [NEMA]
To: ^BULLER: BDC PIM; s9(2)(g)(ii); Sandra James [NEMA]; ^WestCoast: Claire Brown
Subject: RE: Emergency Mobile Alert Westport for Approval
Date: Saturday, 17 July 2021 8:32:11 pm
Attachments: image001.png
image002.jpg

EMA has now been sent.

Ngā mihi

Jo Guard Duty Manager

Jo Guard | Team Leader Exercises, Evaluation, and Lessons Management
National Emergency Management Agency Te Rākau Whakamarumaru

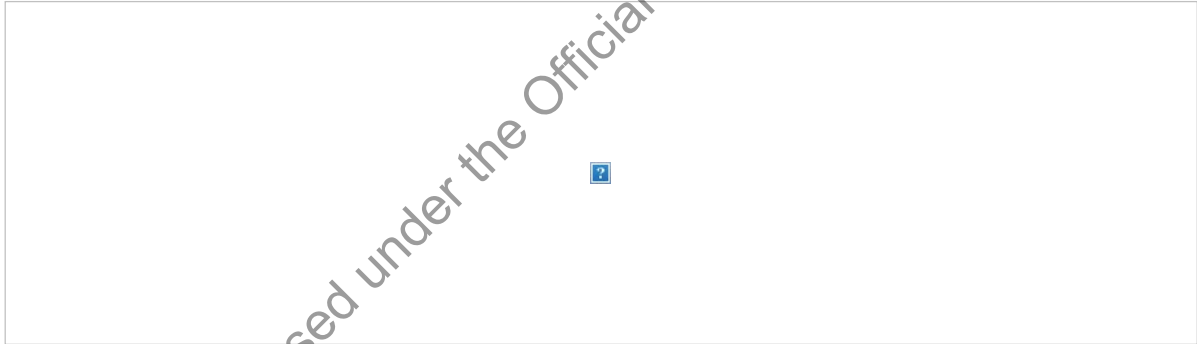
Direct Dial: | Mobile: | www.civildefence.govt.nz Level 7, TSB House, 147 Lambton Quay | PO Box 5010, Wellington 6045, New Zealand

Empowering communities before, during and after emergencies.



From: bdc.pim <xxx.xxx@xxx.xxx.xx>
Sent: Saturday, 17 July 2021 8:30 pm
To: Jo Guard [NEMA] <xx.xxxxx@xxxx.xxx.xx>; s9(2)(g)(ii) Sandra James [NEMA] <xxxxxx.xxxxx@xxxx.xxx.nz>; ^WCRC: Claire Brown <xxxxxx.xxxxx@xxxx.xxx.nz>
Subject: Re: Emergency Mobile Alert Westport for Approval
HI JO
YES it is the message
thanks

From: Jo Guard [NEMA] <xx.xxxxx@xxxx.xxx.xx >
Sent: Saturday, July 17, 2021 8:21 PM
To: bdc.pim <xxx.xxx@xxx.xxx.xx >; s9(2)(g)(ii) [NEMA s9(2)(g)(ii)]; Sandra James [NEMA] <xxxxxx.xxxxx@xxxx.xxx.xx >; Claire Brown <xxxxxx.xxxxx@xxxx.xxx.xx >
Subject: RE: Emergency Mobile Alert Westport for Approval
[UNCLASSIFIED]
Hi there
Just confirming that this is the message you wish to send as there was no attachment to this email.
NOTE: we will add FROM WEST COAST CIVILDEFENCE for clarity.



Ngā mihi

Jo Guard Duty Manager

Jo Guard | Team Leader Exercises, Evaluation, and Lessons Management
National Emergency Management Agency Te Rākau Whakamarumaru

Direct Dial: | Mobile: | www.civildefence.govt.nz Level 7, TSB House, 147 Lambton Quay | PO Box 5010, Wellington 6045, New Zealand

Empowering communities before, during and after emergencies.



From: bdc.pim <xxx.xxx@xxx.xxx.xx >
Sent: Saturday, 17 July 2021 8:15 pm
To: s9(2)(g)(ii) s9(2)(g)(ii) Sandra James [NEMA] <xxxxxx.xxxxx@xxxx.xxx.xx >; ^WCRC: Claire Brown <xxxxxx.xxxxx@xxxx.xxx.xx >
Subject: Re: Emergency Mobile Alert Westport for Approval
As requested the Group Controller for West Coast ECC, John Canning, has given verbal approval for the EMA attached through a controller's conference call 2000 this evening.
Regards
PIM

From: bdc.pim <xxx.xxx@xxx.xxx.xx >
Sent: Saturday, July 17, 2021 7:37 PM
To: s9(2)(g)(ii) <xxxxxx.xxxxx@xxxx.xxx.xx > <xxxxxx.xxxxx@xxxx.xxx.xx >
Subject: Fw: Emergency Mobile Alert Westport for Approval

Please circulate to all of Westport township and surrounds.

The information contained in this email message is for the attention of the intended recipient only and is not necessarily the official view or communication of the Department of the Prime Minister and Cabinet. If you are not the intended recipient you must not disclose, copy or distribute this message or the information in it. If you have received this message in error, please destroy the email and notify the sender immediately.

Released under the Official Information Act 1982