

LEGEND

EXISTING

- LEGAL BOUNDARY
- TOP OF BANK
- - - BOTTOM OF BANK
- FENCE
- ⊕ FIRE HYDRANT
- ⊕ WATER VALVE
- ⊕ WATER METER
- ⊕ MANHOLE
- ⊕ LIGHT STANDARD
- ⊕ TRAFFIC LIGHT CONTROL CHAMBER
- ⊕ POWER POLE
- ⊕ POWER DISTRIBUTION POINT
- ⊕ COMMS DISTRIBUTION POINT
- ⊕ STORMWATER CATCHPIT
- ⊕ SIGN

PROPOSED

- SW — EXTENT OF PAVEMENT WIDENING
- SW — STORMWATER PIPE
- ⊕ STORMWATER MANHOLE
- ⊕ CATCHPIT
- ⊕ LIGHT STANDARD
- ⊕ POWER POLE
- ⊕ SIGN
- ⊕ TRAFFIC LIGHT CONTROL CHAMBER
- ⊕ VEHICLE KERB CROSSING

NOTE:

DATA OBTAINED FROM OTHERS AND INCLUDED IN THESE DRAWINGS ARE AS FOLLOWS:

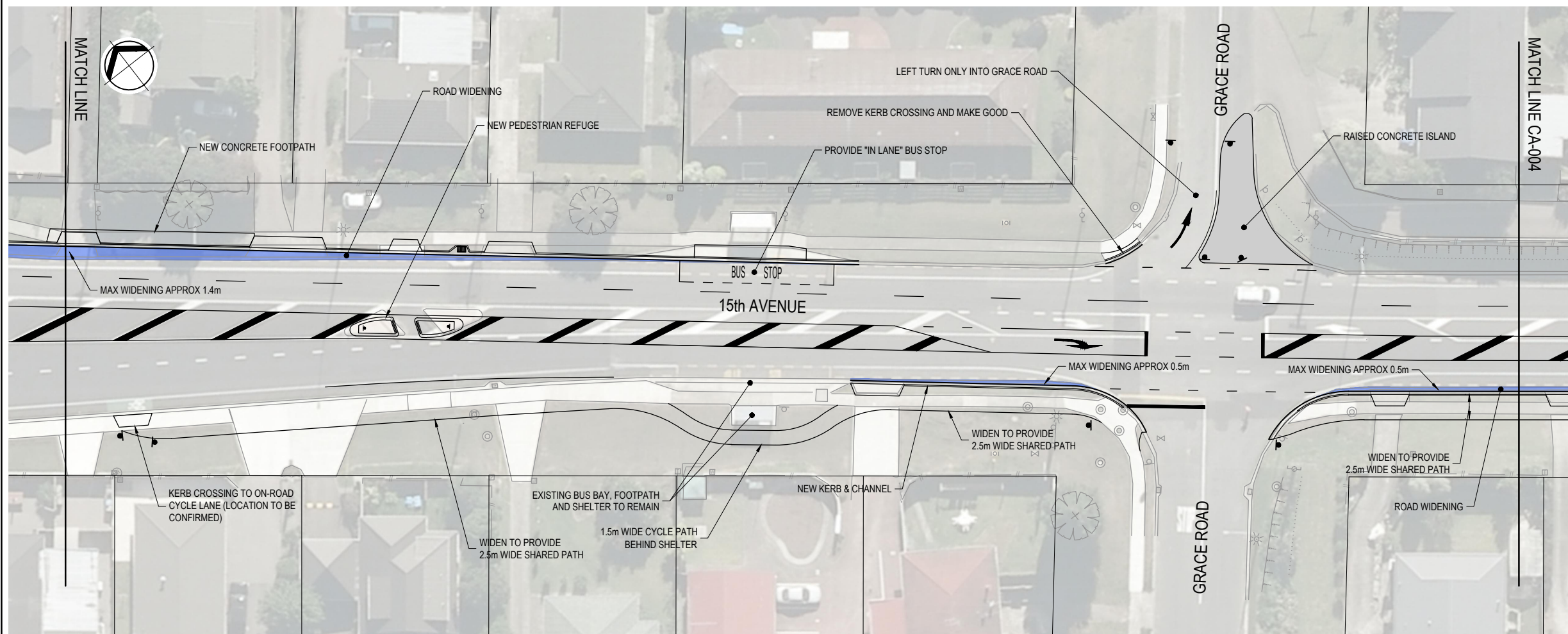
TAURANGA CITY COUNCIL: PROPERTY BOUNDARIES & UTILITY LOCATIONS

LYSAGHT CONSULTANTS LTD: TOPOGRAPHIC SITE SURVEY 11/12/17 & 12/06/2018

B4UDIG: UNDERGROUND SERVICES 08/05/2017

LEVEL DATUM: MOTURIKI 1953

COORDINATE SYSTEM: BOP2000 CIRCUIT



**FOR INFORMATION
NOT FOR CONSTRUCTION**

**SAFETY AUDIT
NOT FOR CONSTRUCTION**

No.	Revision	By	Chk	Appd	Date
D	FOR SAFETY AUDIT	BIL	KNW	CMR	09.08.18
C	FOR INFORMATION - 80% DESIGN	BIL	KNW	TVH	01.03.18
B	SHARED PATHWAY ADDED	BIL	KNW	TVH	30.01.18
A	FOR INFORMATION - 50% DESIGN	BIL	KNW	TVH	16.01.18

Design Originator:

Original Scale (A1) 1:250
Reduced Scale (A3) 1:500

Design	BIL	15.12.17	Approved For Construction*
Drawn	BIL	15.12.17	Date
Design Verifier			
Design Check			

*Refer to Revision 1 for Original Signature

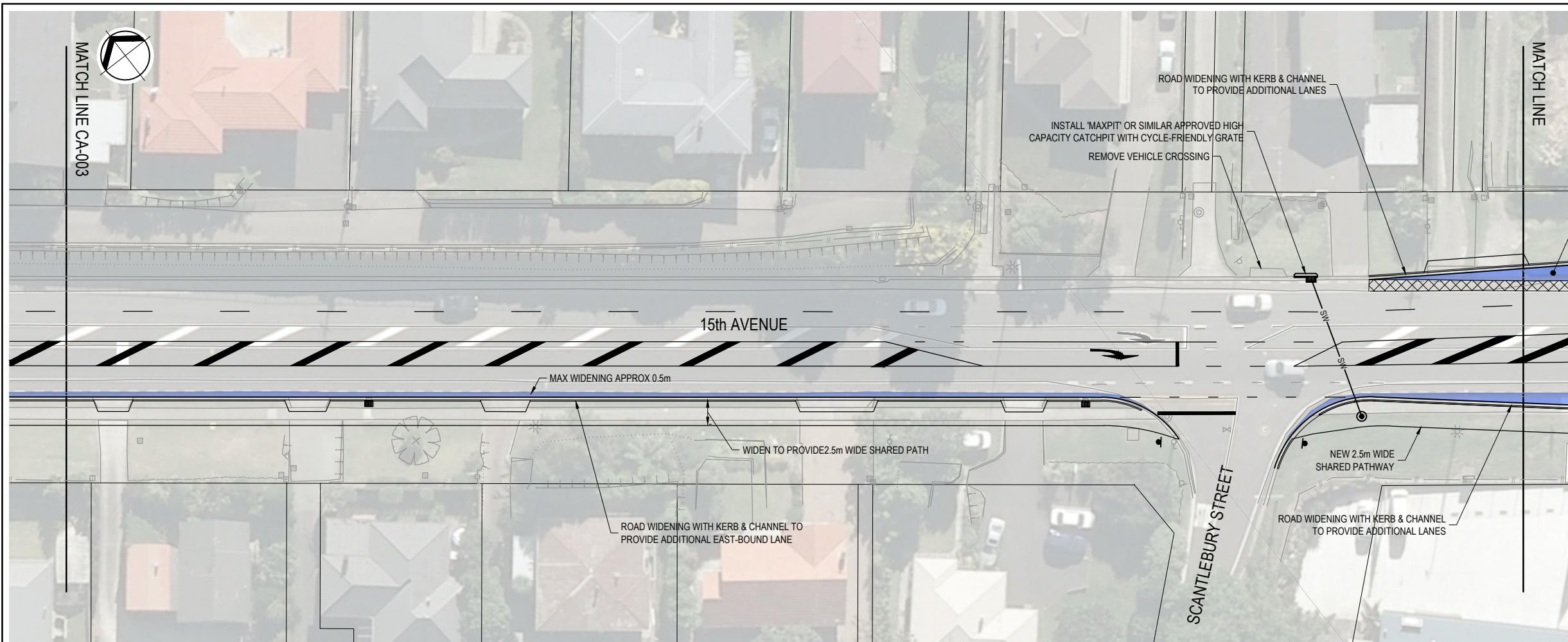
Client:

PRIVATE ROAD Tauranga
PHONE: 071 877 000

Project: **15th AVENUE CORRIDOR IMPROVEMENTS**

Title: **FRASER ST TO BURROWS ST WIDENING TO 3 LANES GENERAL ARRANGEMENT SHT 1**

Discipline	CIVIL ENGINEERING
Drawing No.	3934934-CA-003
Rev.	D



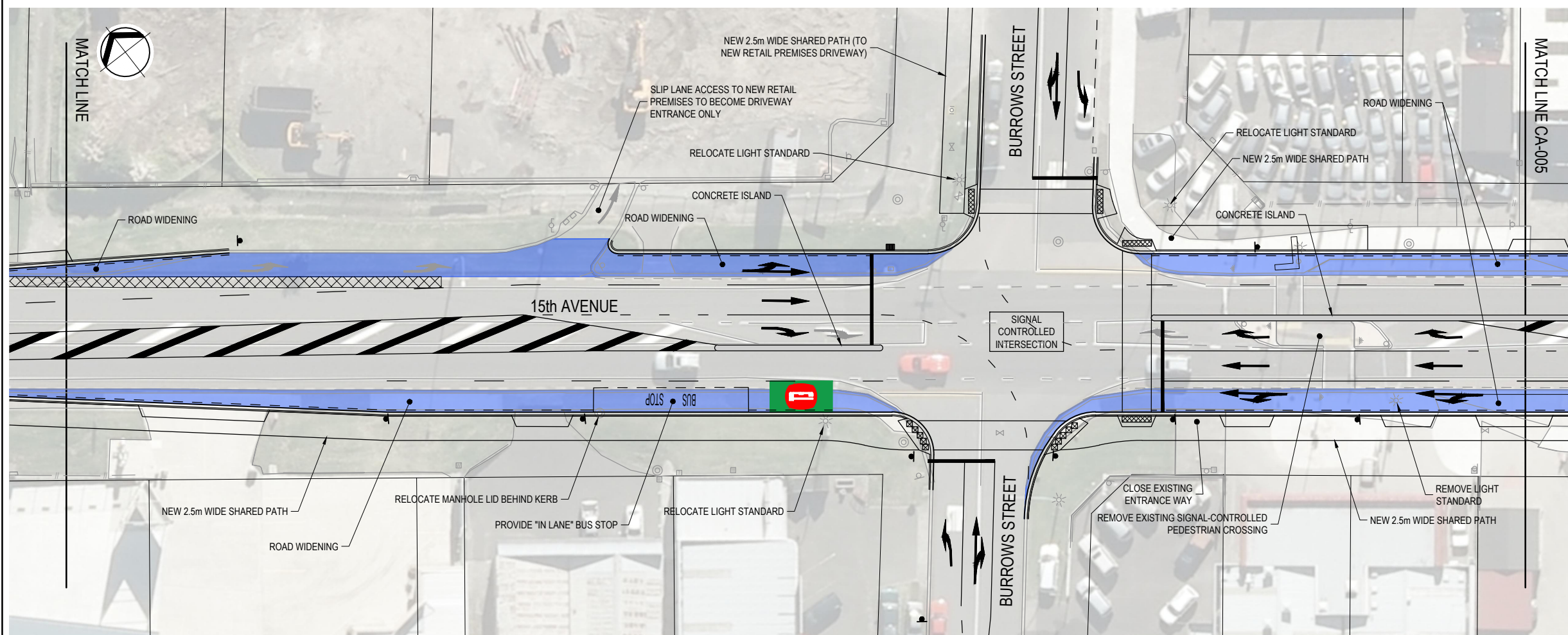
LEGEND

EXISTING

- LEGAL BOUNDARY
- TOP OF BANK
- - - BOTTOM OF BANK
- FENCE
- ⊕ FIRE HYDRANT
- ⊕ WATER VALVE
- ⊕ WATER METER
- ⊕ MANHOLE
- ⊕ LIGHT STANDARD
- ⊕ TRAFFIC LIGHT CONTROL CHAMBER
- ⊕ POWER POLE
- ⊕ POWER DISTRIBUTION POINT
- ⊕ COMMS DISTRIBUTION POINT
- ⊕ STORMWATER CATCHPIT
- ⊕ SIGN

PROPOSED

- EXTENT OF PAVEMENT WIDENING
- ▨ EXTENT OF ADDITIONAL AC OVERLAY
- SW — STORMWATER PIPE
- ⊕ STORMWATER MANHOLE
- ⊕ CATCHPIT
- ⊕ LIGHT STANDARD
- ⊕ POWER POLE
- ⊕ SIGN
- ⊕ TRAFFIC LIGHT CONTROL CHAMBER
- ▭ VEHICLE KERB CROSSING



NOTE:

DATA OBTAINED FROM OTHERS AND INCLUDED IN THESE DRAWINGS ARE AS FOLLOWS:

TAURANGA CITY COUNCIL: PROPERTY BOUNDARIES & UTILITY LOCATIONS

LYSAGHT CONSULTANTS LTD: TOPOGRAPHIC SITE SURVEY 11/12/17 & 12/06/2018

B4UDIG: UNDERGROUND SERVICES 08/05/2017

LEVEL DATUM: MOTURIKI 1953

COORDINATE SYSTEM: BOP2000 CIRCUIT

**FOR INFORMATION
NOT FOR CONSTRUCTION**

**SAFETY AUDIT
NOT FOR CONSTRUCTION**

E	FOR SAFETY AUDIT	BIL	KNW	CMR	09.08.18	Drawing Originator:
D	FOR INFORMATION - 80% DESIGN	BIL	KNW	TVH	22.06.18	
C	REDESIGNED TO INCLUDE BURROWS STREET TRAFFIC LIGHTS	BIL	KNW	TVH	23.02.18	
B	SHARED PATHWAY ADDED	BIL	KNW	TVH	30.01.18	
No.	Revision	By	Chk	Appd	Date	

Original Scale (A1)	1:250	Design	BIL	15.12.17	Approved For Construction*
Reduced Scale (A3)	1:500	Drawn	BIL	15.12.17	Date
		Dwg Verifier			
		Dwg Check			

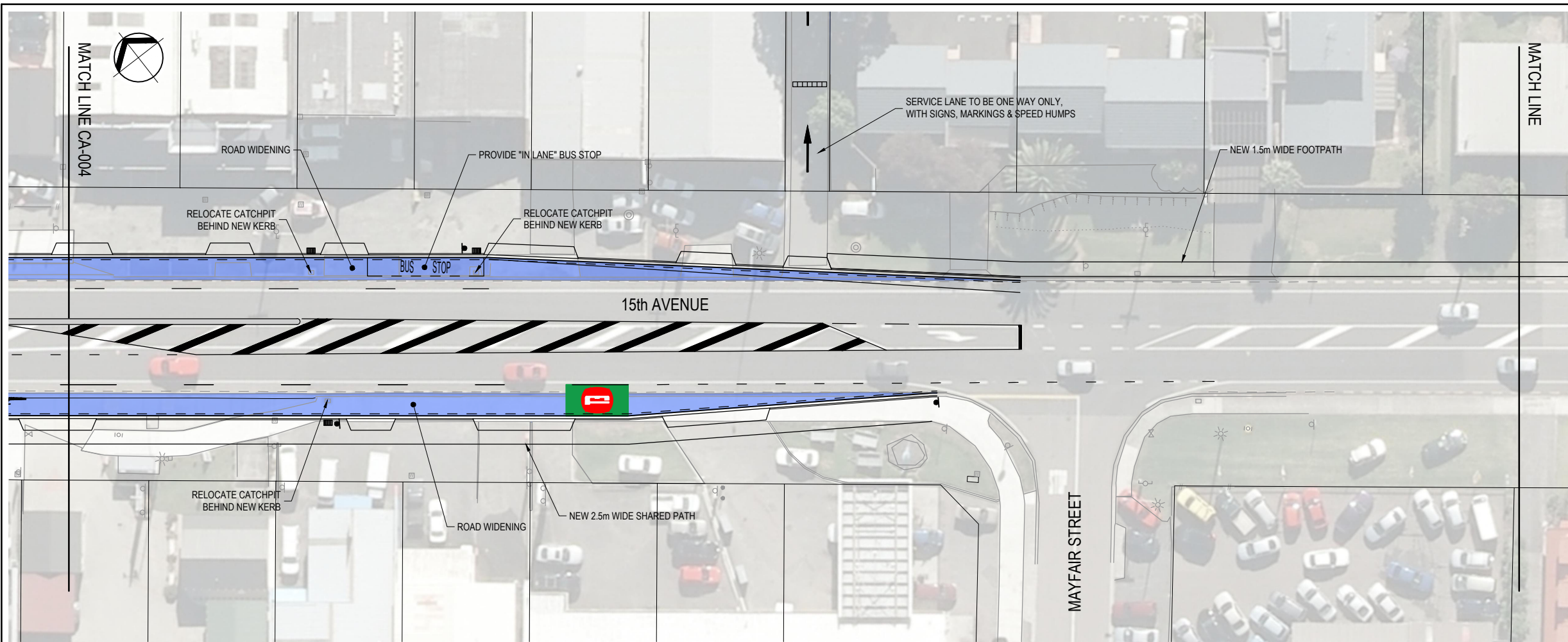
* Refer to Revision 1 for Original Signature

Client: Tauranga City
PRIVATE ROAD TAURANGA
PHONE 07 577 5500

Project: 15th AVENUE CORRIDOR IMPROVEMENTS

Title: FRASER ST TO BURROWS ST WIDENING TO 3 LANES GENERAL ARRANGEMENT SHT 2

Discipline	CIVIL ENGINEERING
Drawing No.	3934934-CA-004
Rev.	E



LEGEND

EXISTING

- LEGAL BOUNDARY
- TOP OF BANK
- - - BOTTOM OF BANK
- FENCE
- ⊕ FIRE HYDRANT
- ⊕ WATER VALVE
- ⊕ WATER METER
- ⊕ MANHOLE
- ⊕ LIGHT STANDARD
- ⊕ TRAFFIC LIGHT CONTROL CHAMBER
- ⊕ POWER POLE
- ⊕ POWER DISTRIBUTION POINT
- ⊕ COMMS DISTRIBUTION POINT
- ⊕ STORMWATER CATCHPIT
- ⊕ SIGN
- WOODEN BOLLARD

PROPOSED

- EXTENT OF PAVEMENT WIDENING
- SW — STORMWATER PIPE
- ⊕ STORMWATER MANHOLE
- ⊕ CATCHPIT
- ⊕ LIGHT STANDARD
- ⊕ POWER POLE
- ⊕ SIGN
- ⊕ TRAFFIC LIGHT CONTROL CHAMBER
- ▭ VEHICLE KERB CROSSING

NOTE:

DATA OBTAINED FROM OTHERS AND INCLUDED IN THESE DRAWINGS ARE AS FOLLOWS:

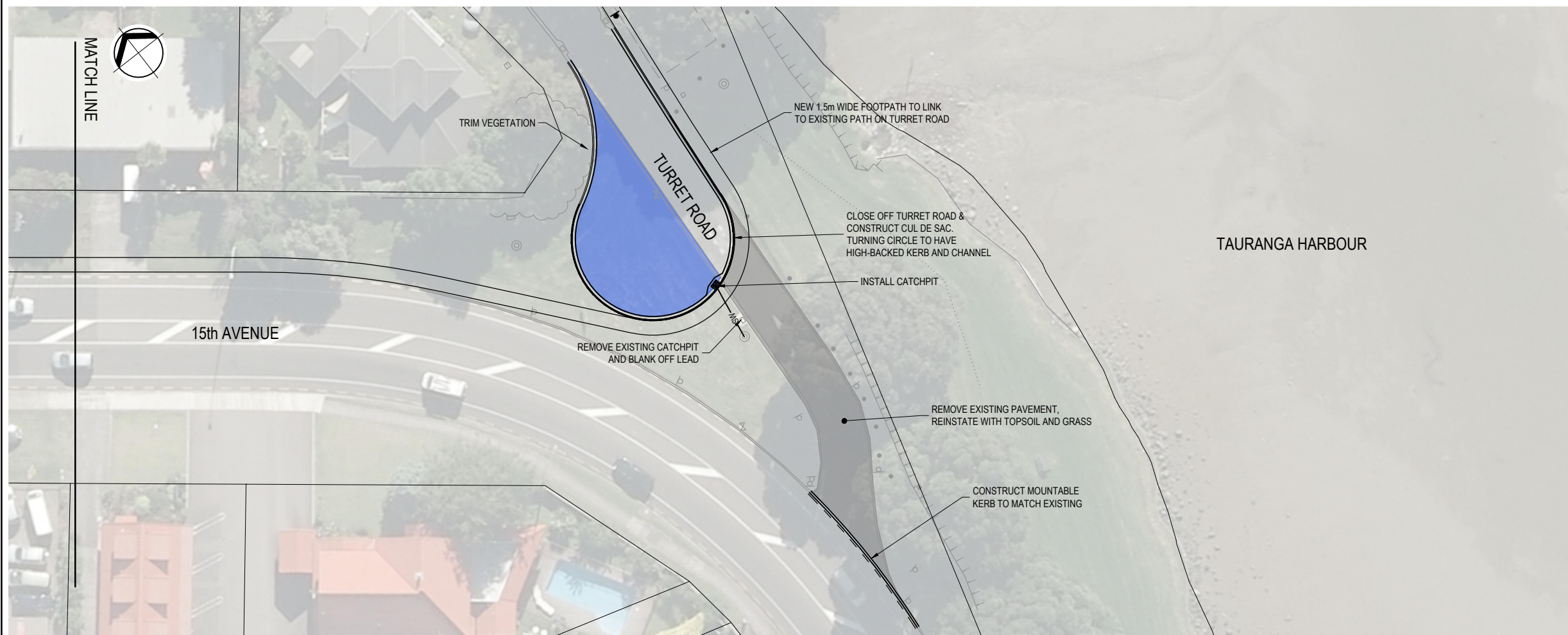
TAURANGA CITY COUNCIL: PROPERTY BOUNDARIES & UTILITY LOCATIONS

LYSAGHT CONSULTANTS LTD: TOPOGRAPHIC SITE SURVEY 11/12/17 & 12/06/2018

B4UDIG: UNDERGROUND SERVICES 08/05/2017

LEVEL DATUM: MOTURIKI 1953

COORDINATE SYSTEM: BOP2000 CIRCUIT



**FOR INFORMATION
NOT FOR CONSTRUCTION**

**SAFETY AUDIT
NOT FOR CONSTRUCTION**

No.	Revision	By	Chk	Appd	Date
C	FOR SAFETY AUDIT	BIL	KNW	CMR	09.08.18
B	FOR INFORMATION - 80% DESIGN	BIL	KNW	TVH	22.06.18
A	FOR INFORMATION - 50% DESIGN	BIL	KNW	TVH	23.02.18

Drawing Originator:

Original Scale (A1) 1:250
Reduced Scale (A3) 1:500

Design	BIL	15.12.17	Approved For Construction*
Drawn	BIL	15.12.17	Date
Dwg Verifier			
Dwg Check			

* Refer to Revision 1 for Original Signature

Client:

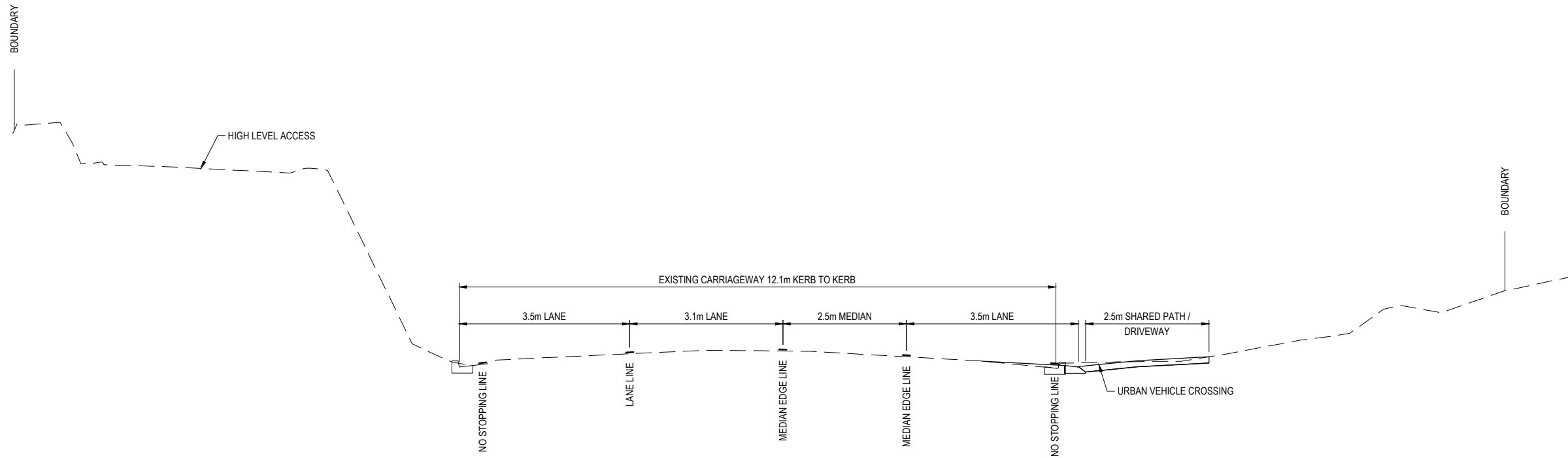
Project: 15th AVENUE CORRIDOR IMPROVEMENTS

Title: FRASER ST TO BURROWS ST WIDENING TO 3 LANES GENERAL ARRANGEMENT SHT 3

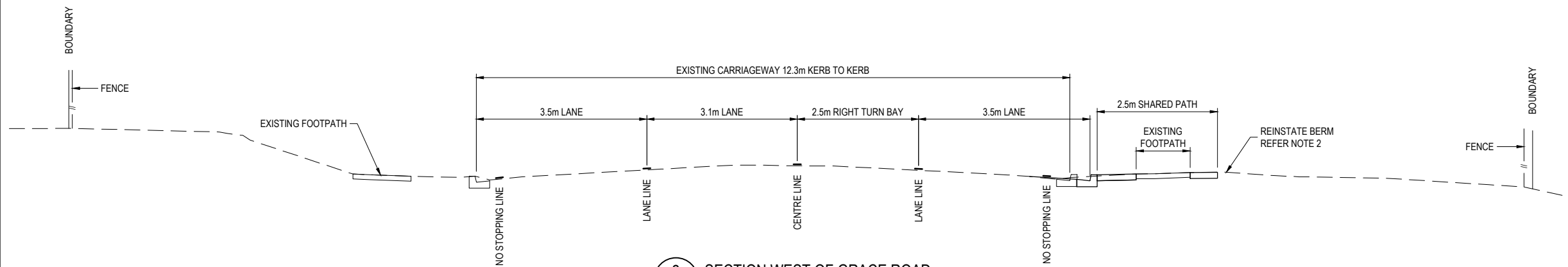
Discipline	CIVIL ENGINEERING
Drawing No.	3934934-CA-005
Rev.	C

NOTES:

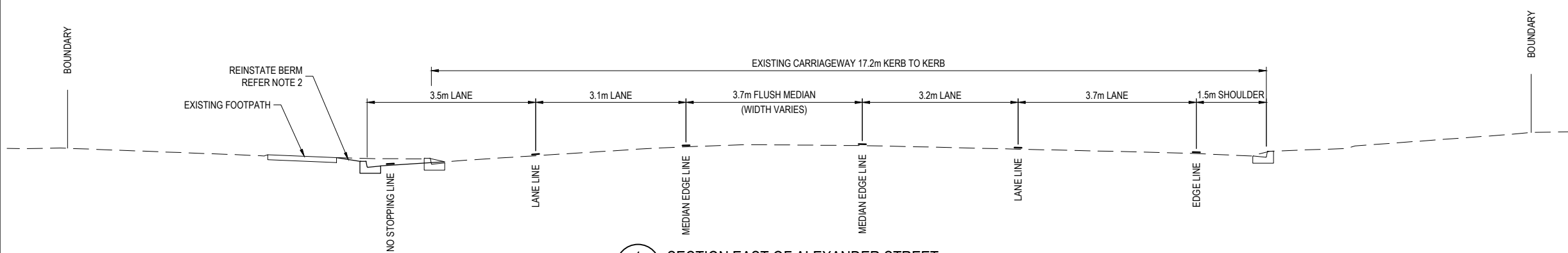
1. REFER DWG 3934934-CA-021 FOR PAVEMENT / FOOTPATH DETAILS
2. 5% MAXIMUM SLOPE FOR GRASS BERM. REFER TCC IDC STD DWG T431 FOR VEHICLE CROSSING, T440 FOR PATHWAY KERB CROSSING



3 SECTION EAST OF GRACE ROAD
CA-012 1:50



2 SECTION WEST OF GRACE ROAD
CA-011 1:50



1 SECTION EAST OF ALEXANDER STREET
CA-011 1:50

**FOR INFORMATION
NOT FOR CONSTRUCTION**

**SAFETY AUDIT
NOT FOR CONSTRUCTION**

D	FOR SAFETY AUDIT	BIL	KNW	CMR	09.08.18
C	FOR INFORMATION - 80% DESIGN	BIL	KNW	TVH	21.06.18
B	SHARED PATHWAY ADDED	BIL	KNW	TVH	30.01.18
A	FOR INFORMATION - 50% DESIGN	BIL	KNW	TVH	16.01.18
No.	Revision	By	Chk.	Appd.	Date



Original Scale (A1)	Design	BIL	15.12.17	Approved For Construction*
1:50	Drawn	BIL	15.12.17	Date
Reduced Scale (A3)	Design Verifier			
1:100	Design Check			
	* Refer to Revision 1 for Original Signature			



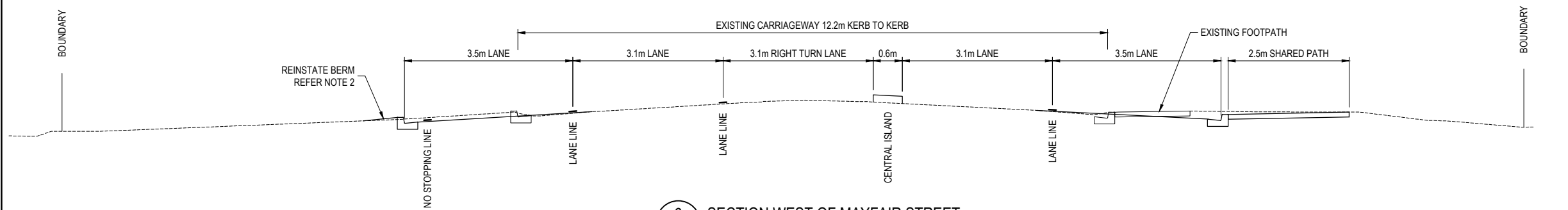
Client: **Tauranga City**
Project: **15th AVENUE CORRIDOR IMPROVEMENTS**

Title: **FRASER ST TO BURROWS ST CROSS SECTIONS SHEET 1**

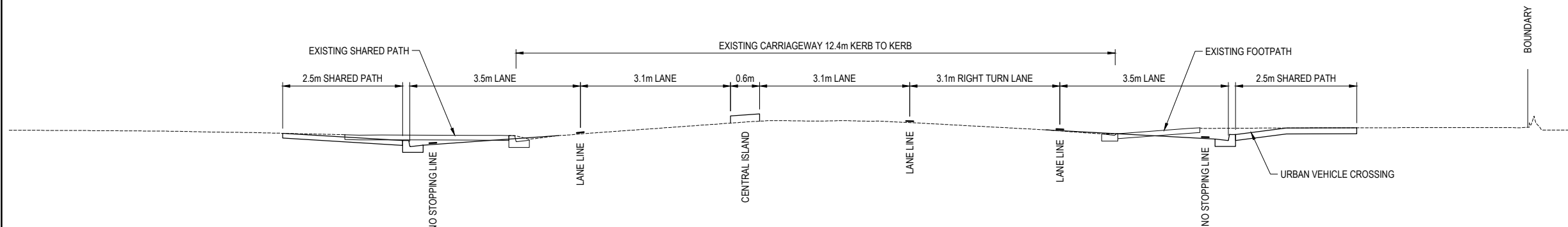
Discipline	CIVIL ENGINEERING
Drawing No.	3934934-CA-009
Rev.	D

NOTES:

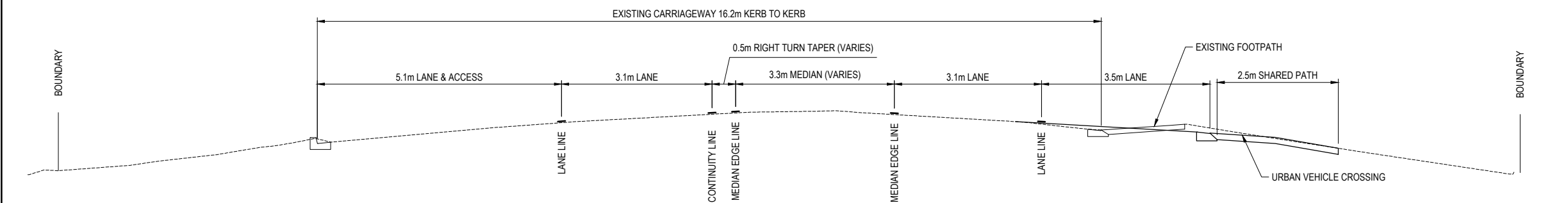
1. REFER DWG 3934934-CA-021 FOR PAVEMENT / FOOTPATH DETAILS
2. 5% MAXIMUM SLOPE FOR GRASS BERM. REFER TCC IDC STD DWG T431 FOR VEHICLE CROSSING, T440 FOR PATHWAY KERB CROSSING



6 SECTION WEST OF MAYFAIR STREET
CA-013 1:50



5 SECTION EAST OF BURROWS STREET
CA-012 1:50



4 SECTION WEST OF BURROWS STREET
CA-012 1:50

**FOR INFORMATION
NOT FOR CONSTRUCTION**

**SAFETY AUDIT
NOT FOR CONSTRUCTION**

No.	Revision	By	Chk	Appd	Date
A	FOR SAFETY AUDIT	BIL	KNW	CMR	09.08.18



Original Scale (A1)	Design	BIL	15.12.17	Approved For Construction*
1:50	Drawn	BIL	15.12.17	Date
Reduced Scale (A3)	Design Checker			
1:100	Design Checker			

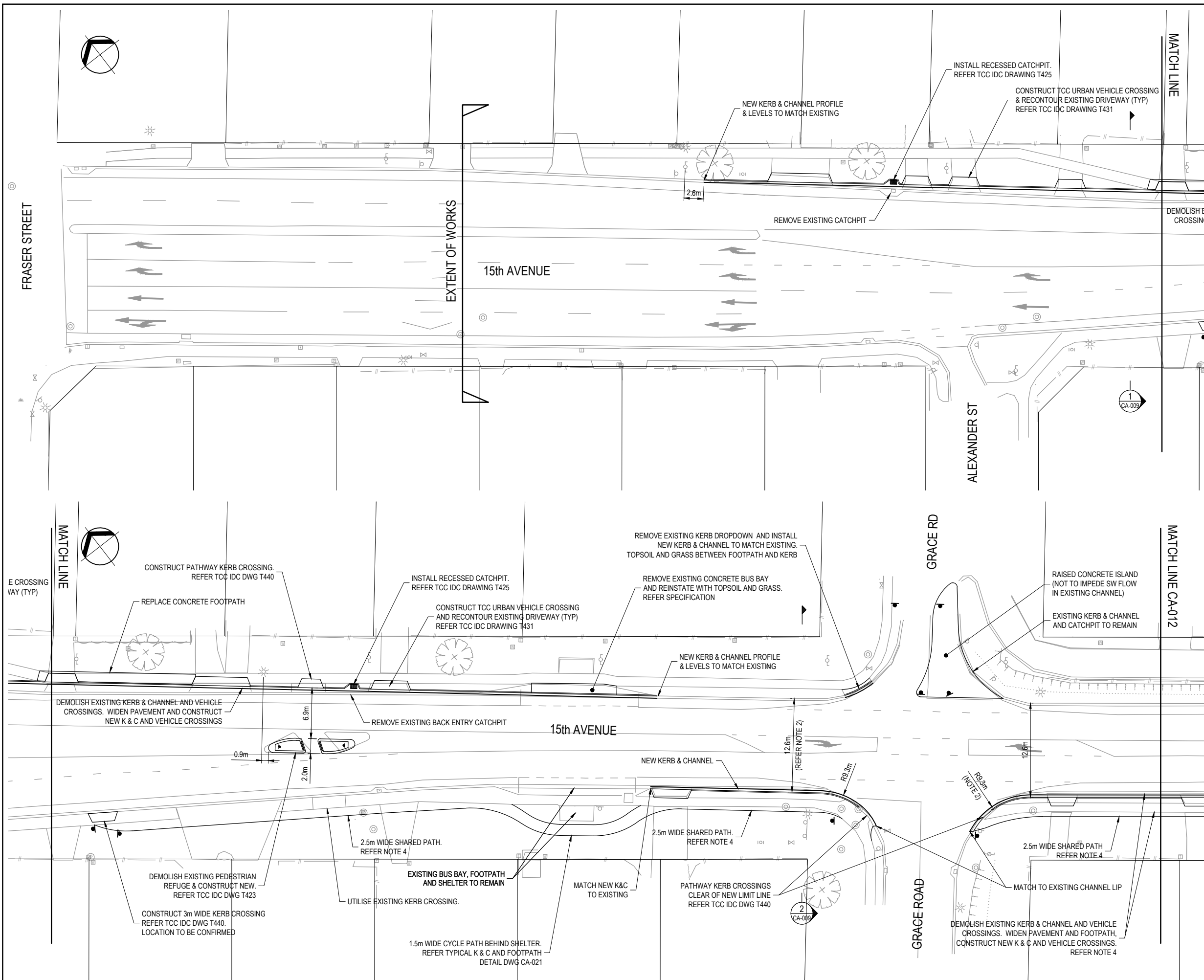
* Refer to Revision 1 for Original Signature



Client: **Tauranga City**
Project: **15th AVENUE CORRIDOR IMPROVEMENTS**

Title: **FRASER ST TO BURROWS ST CROSS SECTIONS SHEET 2**

Discipline	CIVIL ENGINEERING
Drawing No.	3934934-CA-010
Rev.	A



LEGEND

EXISTING

- LEGAL BOUNDARY
- TOP OF BANK
- BOTTOM OF BANK
- FENCE
- ⊕ FIRE HYDRANT
- ⊕ WATER VALVE
- ⊕ WATER METER
- ⊕ MANHOLE
- ⊕ LIGHT STANDARD
- ⊕ TRAFFIC LIGHT CONTROL CHAMBER
- ⊕ POWER POLE
- ⊕ POWER DISTRIBUTION POINT
- ⊕ COMMS DISTRIBUTION POINT
- ⊕ STORMWATER CATCHPIT
- ⊕ SIGN

PROPOSED

- SW STORMWATER PIPE
- ⊕ STORMWATER MANHOLE
- ⊕ CATCHPIT
- ⊕ LIGHT STANDARD
- ⊕ POWER POLE
- ⊕ SIGN
- ⊕ TRAFFIC LIGHT CONTROL CHAMBER
- ⊕ URBAN VEHICLE CROSSING (REFER TCC IDC DWG T431)

NOTE:

DATA OBTAINED FROM OTHERS AND INCLUDED IN THESE DRAWINGS ARE AS FOLLOWS:

TAURANGA CITY COUNCIL:	PROPERTY BOUNDARIES & UTILITY LOCATIONS
LYSAGHT CONSULTANTS LTD:	TOPOGRAPHIC SITE SURVEY 11/12/17 & 12/06/2018
B4UDIG:	UNDERGROUND SERVICES 08/05/2017
LEVEL DATUM:	MOTURIKI
COORDINATE SYSTEM	BOP2000 CIRCUIT

- ### NOTES:
- FOR UNDERGROUND SERVICES REFER DRAWINGS CA-006, 007 & 008. CONTRACTOR TO POTHOLE AND LOCATE ALL SERVICES BEFORE COMMENCING ANY EXCAVATION
 - LATERAL DIMENSIONS ARE TO / FROM FACE OF KERB AND / OR CENTRE OF PAINTED ROAD MARKING. RADIAL DIMENSIONS ARE TO LIP OF CHANNEL / EDGE OF SEAL
 - KERB AND CHANNEL, FOOTPATHS, VEHICLE CROSSINGS, PATHWAY KERB CROSSINGS AND ALTERATIONS TO TCC UTILITIES NETWORKS TO BE IN ACCORDANCE WITH TCC INFRASTRUCTURE DEVELOPMENT CODE
 - WHERE PRACTICABLE, EXISTING FOOTPATHS ARE TO REMAIN. NEW FOOTPATHS / SHARED PATHS TO EXTEND FROM EXISTING PATHS AND TO MATCH THEIR LEVELS AND GRADIENTS. REFER DWG CA-021. ALL VALVE / MANHOLE LID LEVELS TO TIE INTO FOOTPATH. ALLOW FOR LID ADJUSTMENT

**FOR INFORMATION
NOT FOR CONSTRUCTION**

**SAFETY AUDIT
NOT FOR CONSTRUCTION**

No.	Revision	By	Chk	Appd	Date
B	FOR SAFETY AUDIT	BIL	KNW	CMR	09.08.18
A	FOR INFORMATION - 80% DESIGN	BIL	KNW	TVH	21.06.18

Drawing Originator: **Beca**

Original Scale (A1)	Design Drawn	BIL	15.12.17	Approved For Construction*
1:250	Drawn	BIL	18.05.18	Date
Reduced Scale (A3)	Dwg Verifier			
1:500	Dwg Check			

* Refer to Revision 1 for Original Signature

Client: **Tauranga City**
PRIVATE ROAD TAURANGA
PHONE: 07 937 500

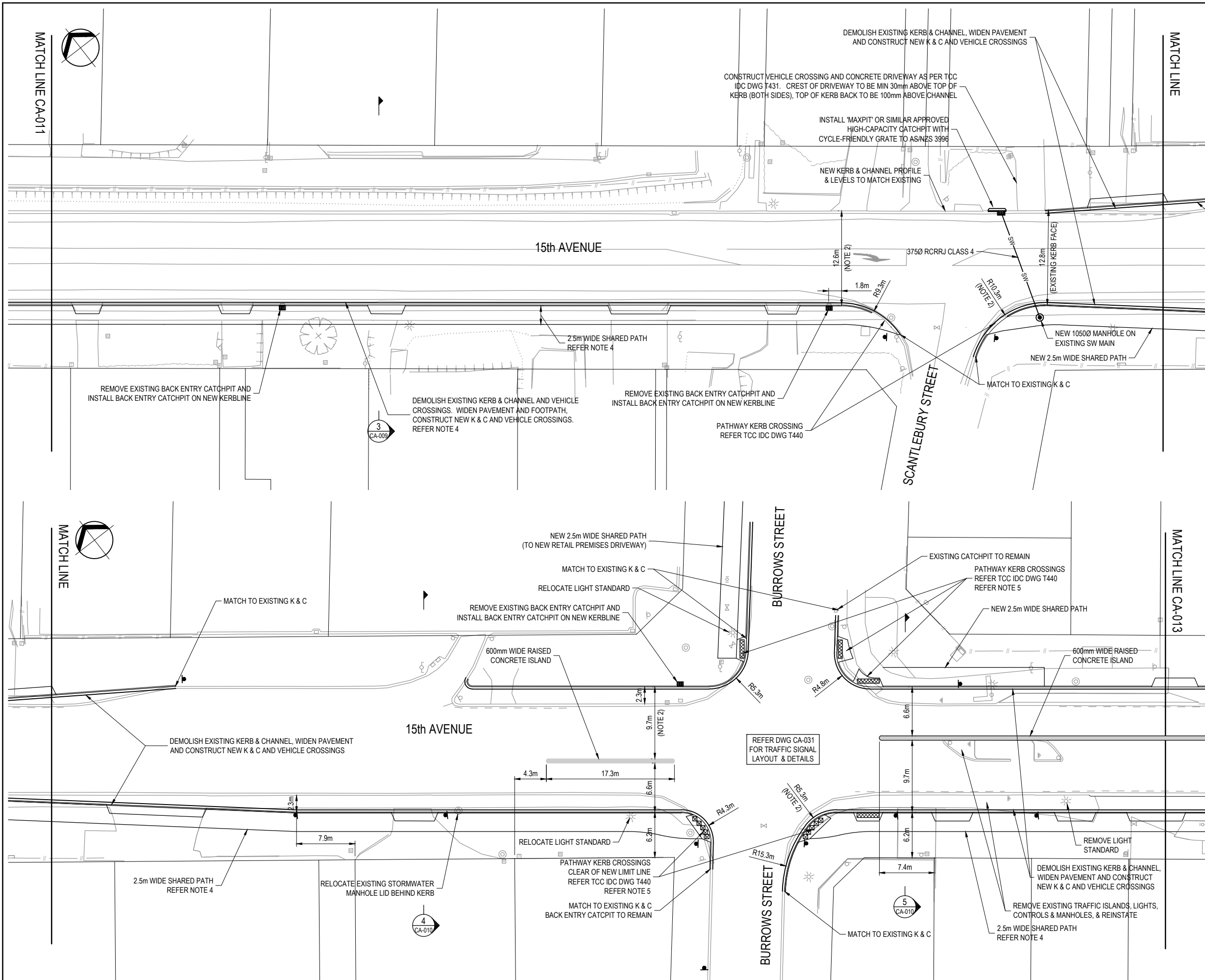
Project: **15th AVENUE CORRIDOR IMPROVEMENTS**

Title: **FRASER ST TO BURROWS ST WIDENING TO 3 LANES SETOUT PLAN SHEET 1**

Discipline: **CIVIL ENGINEERING**

Drawing No: **3934934-CA-011**

Rev: **B**



LEGEND

EXISTING

- LEGAL BOUNDARY
- TOP OF BANK
- BOTTOM OF BANK
- FENCE
- ⊕ FIRE HYDRANT
- ⊕ WATER VALVE
- ⊕ WATER METER
- ⊕ MANHOLE
- ⊕ LIGHT STANDARD
- ⊕ TRAFFIC LIGHT CONTROL CHAMBER
- ⊕ POWER POLE
- ⊕ POWER DISTRIBUTION POINT
- ⊕ COMMS DISTRIBUTION POINT
- ⊕ STORMWATER CATCHPIT
- ⊕ SIGN

PROPOSED

- SW --- STORMWATER PIPE
- ⊕ STORMWATER MANHOLE
- ⊕ CATCHPIT
- ⊕ LIGHT STANDARD
- ⊕ POWER POLE
- ⊕ SIGN
- ⊕ TRAFFIC LIGHT CONTROL CHAMBER
- ⊕ URBAN VEHICLE CROSSING (REFER TCC IDC DWG T431)

NOTE:

DATA OBTAINED FROM OTHERS AND INCLUDED IN THESE DRAWINGS ARE AS FOLLOWS:

TAURANGA CITY COUNCIL: PROPERTY BOUNDARIES & UTILITY LOCATIONS

LYSAGHT CONSULTANTS LTD: TOPOGRAPHIC SITE SURVEY 11/12/17 & 12/06/2018

B4UDIG: UNDERGROUND SERVICES 08/05/2017

LEVEL DATUM: MOTURIKI

COORDINATE SYSTEM: BOP2000 CIRCUIT

- ### NOTES:
- FOR UNDERGROUND SERVICES REFER DRAWINGS CA-006, 007 & 008. CONTRACTOR TO POTHOLE AND LOCATE ALL SERVICES BEFORE COMMENCING ANY EXCAVATION
 - LATERAL DIMENSIONS ARE TO / FROM FACE OF KERB AND / OR CENTRE OF PAINTED ROAD MARKING. RADIAL DIMENSIONS ARE TO LIP OF CHANNEL / EDGE OF SEAL
 - KERB AND CHANNEL, FOOTPATHS, VEHICLE CROSSINGS, PATHWAY KERB CROSSINGS AND ALTERATIONS TO TCC UTILITIES NETWORKS TO BE IN ACCORDANCE WITH TCC INFRASTRUCTURE DEVELOPMENT CODE
 - WHERE PRACTICABLE, EXISTING FOOTPATHS ARE TO REMAIN. NEW FOOTPATHS / SHARED PATHS TO EXTEND FROM EXISTING PATHS AND TO MATCH THEIR LEVELS AND GRADIENTS. REFER DWG CA-021. ALL VALVE / MANHOLE LID LEVELS TO TIE INTO FOOTPATH. ALLOW FOR LID ADJUSTMENT
 - TACTILE PANELS TO BE INSTALLED AT ALL PATHWAY KERB CROSSINGS AT BURROWS/15th INTERSECTION IN ACCORDANCE WITH NZTA ROAD AND TRAFFIC SERIES GUIDELINE RTS 14

FOR INFORMATION NOT FOR CONSTRUCTION

SAFETY AUDIT NOT FOR CONSTRUCTION

No.	Revision	By	Chk	Appd	Date
B	FOR SAFETY AUDIT	BIL	KNW	CMR	09.08.18
A	FOR INFORMATION - 80% DESIGN	BIL	KNW	TVH	21.06.18

Drawing Originator: **Beca**

Original Scale (A1)	1:250	Design	BIL	15.12.17	Approved For Construction*
Reduced Scale (A3)	1:500	Drawn	BIL	15.12.17	Date
		Dwg Verifier			
		Dwg Check			

* Refer to Revision 1 for Original Signature

Client: **Tauranga City**

Project: **15th AVENUE CORRIDOR IMPROVEMENTS**

Discipline: **CIVIL ENGINEERING**

Drawing No: **3934934-CA-012**

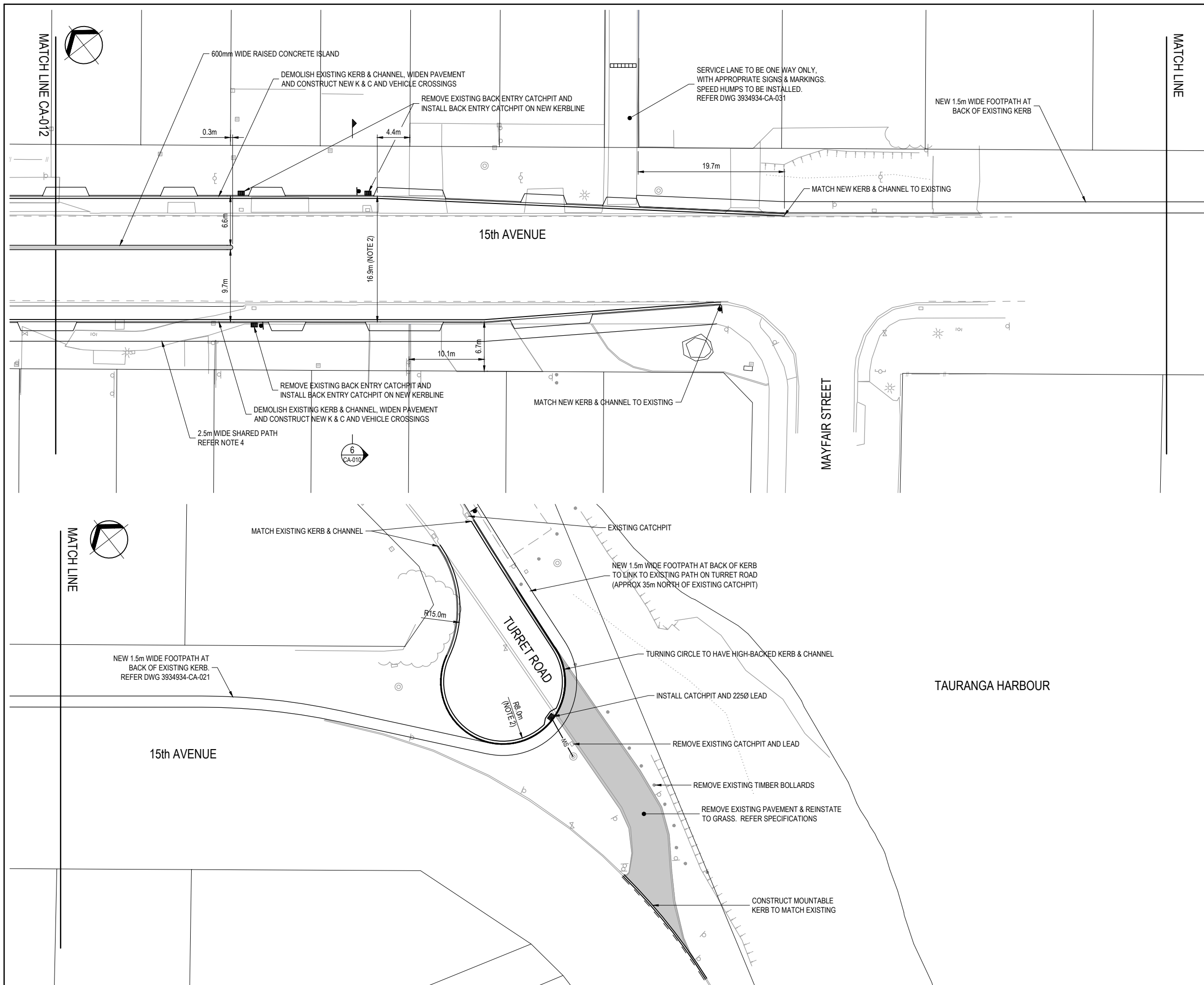
Rev: **B**

Title: **FRASER ST TO BURROWS ST WIDENING TO 3 LANES SETOUT PLAN SHEET 2**

www.beca.com

Document No. 3934934-CA-012.DWG

IF IN DOUBT ASK



LEGEND

EXISTING

- LEGAL BOUNDARY
- TOP OF BANK
- BOTTOM OF BANK
- FENCE
- ⊕ FIRE HYDRANT
- ⊕ WATER VALVE
- ⊕ WATER METER
- ⊕ MANHOLE
- ⊕ LIGHT STANDARD
- ⊕ TRAFFIC LIGHT CONTROL CHAMBER
- ⊕ POWER POLE
- ⊕ POWER DISTRIBUTION POINT
- ⊕ COMMS DISTRIBUTION POINT
- ⊕ STORMWATER CATCHPIT
- ⊕ SIGN

PROPOSED

- SW — STORMWATER PIPE
- ⊕ STORMWATER MANHOLE
- ⊕ CATCHPIT
- ⊕ LIGHT STANDARD
- ⊕ POWER POLE
- ⊕ SIGN
- ⊕ TRAFFIC LIGHT CONTROL CHAMBER
- ⊕ URBAN VEHICLE CROSSING (REFER TCC IDC DWG T431)

NOTE:

DATA OBTAINED FROM OTHERS AND INCLUDED IN THESE DRAWINGS ARE AS FOLLOWS:

TAURANGA CITY COUNCIL:	PROPERTY BOUNDARIES & UTILITY LOCATIONS
LYSAGHT CONSULTANTS LTD:	TOPOGRAPHIC SITE SURVEY 11/12/17 & 12/06/2018
B4UDIG:	UNDERGROUND SERVICES 08/05/2017
LEVEL DATUM:	MOTURIKI
COORDINATE SYSTEM	BOP2000 CIRCUIT

- ### NOTES:
- FOR UNDERGROUND SERVICES REFER DRAWINGS CA-006, 007 & 008. CONTRACTOR TO POTHOLE AND LOCATE ALL SERVICES BEFORE COMMENCING ANY EXCAVATION
 - LATERAL DIMENSIONS ARE TO / FROM FACE OF KERB AND / OR CENTRE OF PAINTED ROAD MARKING. RADIAL DIMENSIONS ARE TO LIP OF CHANNEL / EDGE OF SEAL
 - KERB AND CHANNEL, FOOTPATHS, VEHICLE CROSSINGS, PATHWAY KERB CROSSINGS AND ALTERATIONS TO TCC UTILITIES NETWORKS TO BE IN ACCORDANCE WITH TCC INFRASTRUCTURE DEVELOPMENT CODE
 - WHERE PRACTICABLE, EXISTING FOOTPATHS ARE TO REMAIN. NEW FOOTPATHS / SHARED PATHS TO EXTEND FROM EXISTING PATHS AND TO MATCH THEIR LEVELS AND GRADIENTS. REFER DWG CA-021. ALL VALVE / MANHOLE LID LEVELS TO TIE INTO FOOTPATH. ALLOW FOR LID ADJUSTMENT

FOR INFORMATION NOT FOR CONSTRUCTION

SAFETY AUDIT NOT FOR CONSTRUCTION

No.	Revision	By	Chk	Appd	Date
B	FOR SAFETY AUDIT	BIL	KNW	CMR	09.08.18
A	FOR INFORMATION - 80% DESIGN	BIL	KNW	TVH	21.06.18

Drawing Originator: **Beca**

Original Scale (A1)	Design	BIL	15.12.17	Approved For Construction*
1:250	Drawn	BIL	18.05.18	Date
Reduced Scale (A3)	Dwg Verifier			
1:500	Dwg Check			

* Refer to Revision 1 for Original Signature

Client: **Tauranga City**

PRIVATE ROAD TAURANGA
PHONE: 071 877 000

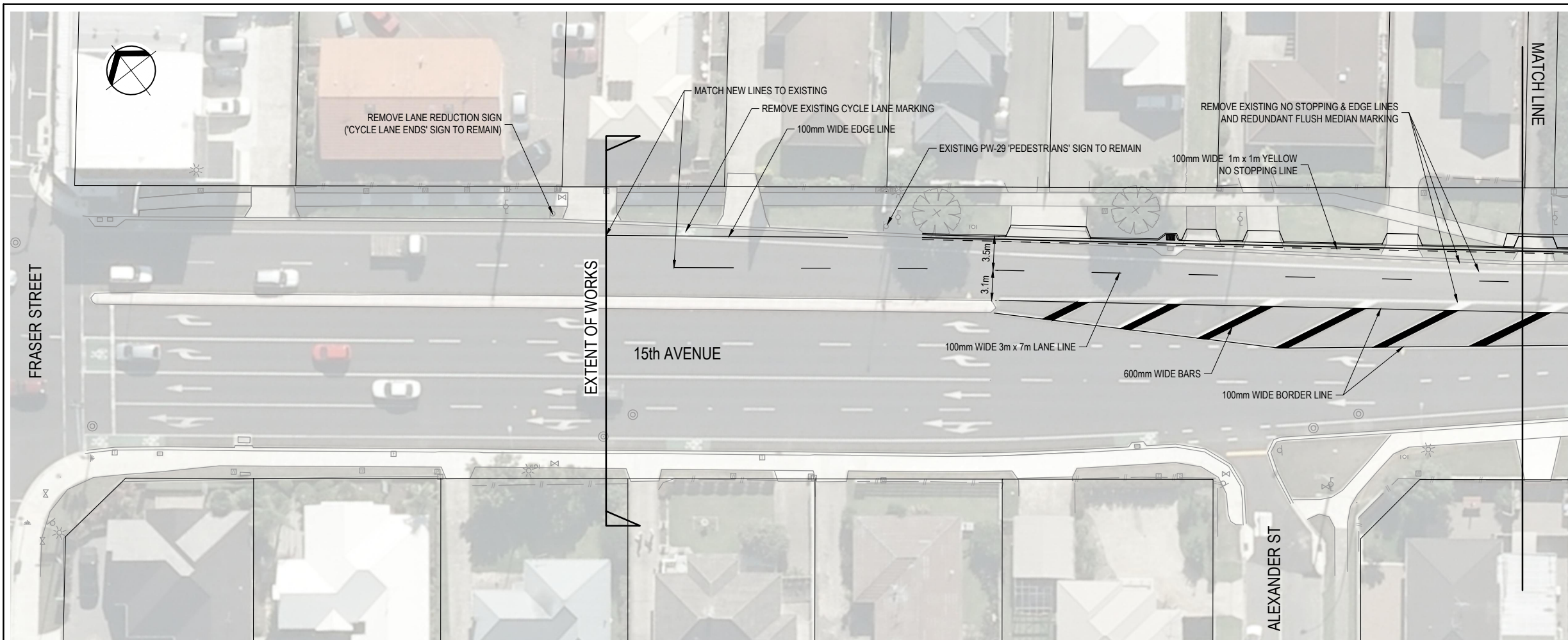
Project: **15th AVENUE CORRIDOR IMPROVEMENTS**

Title: **FRASER ST TO BURROWS ST WIDENING TO 3 LANES SETOUT PLAN SHEET 3**

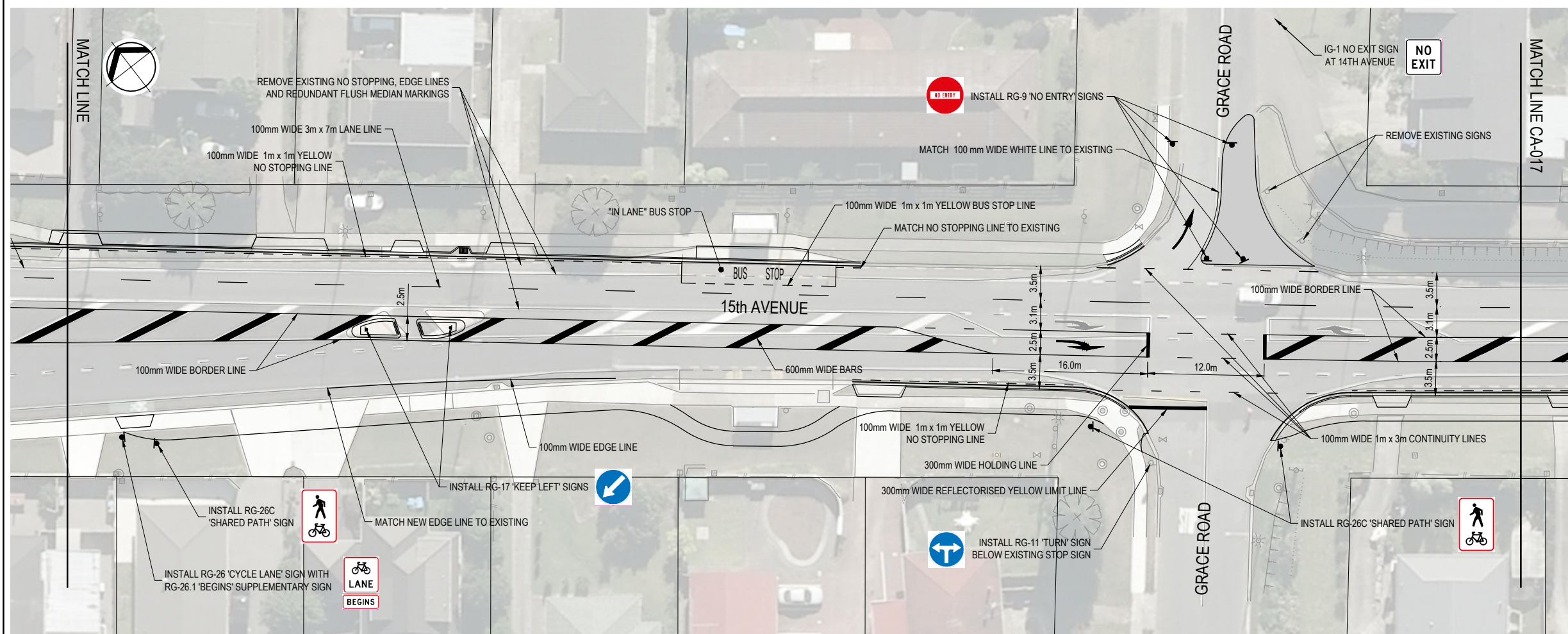
Discipline: **CIVIL ENGINEERING**

Drawing No: **3934934-CA-013**

Rev: **B**



- NOTES:
1. SIGNS TO BE IN ACCORDANCE WITH MOTSAM PART I
 2. PAVEMENT MARKINGS TO BE IN ACCORDANCE WITH MOTSAM PART II, T3 MARKING IN ACCORDANCE WITH AUCKLAND TRANSPORT CODE OF PRACTICE
 3. ALL PAINT TO BE REFLECTORISED WHITE UNLESS NOTED OTHERWISE
 4. REDUNDANT MARKINGS TO BE REMOVED BY HYDRO BLASTING, REFER SPECIFICATIONS
 5. MEASUREMENTS ARE FROM FACE OF KERB AND/OR TO CENTRE OF PAINTED ROAD MARKING



**FOR INFORMATION
NOT FOR CONSTRUCTION**

**SAFETY AUDIT
NOT FOR CONSTRUCTION**

No.	Revision	By	Chk	Appd	Date
B	FOR SAFETY AUDIT	BIL	KNW	CMR	09.08.18
A	FOR INFORMATION - 80% DESIGN	BIL	KNW	TVH	21.06.18



Original Scale (A1)	1:250	Design	BIL	15.12.17	Approved For Construction*
Reduced Scale (A3)	1:500	Drawn	BIL	18.05.18	Date
		Design Checker			
		Drawn			
		Check			
		Verify			

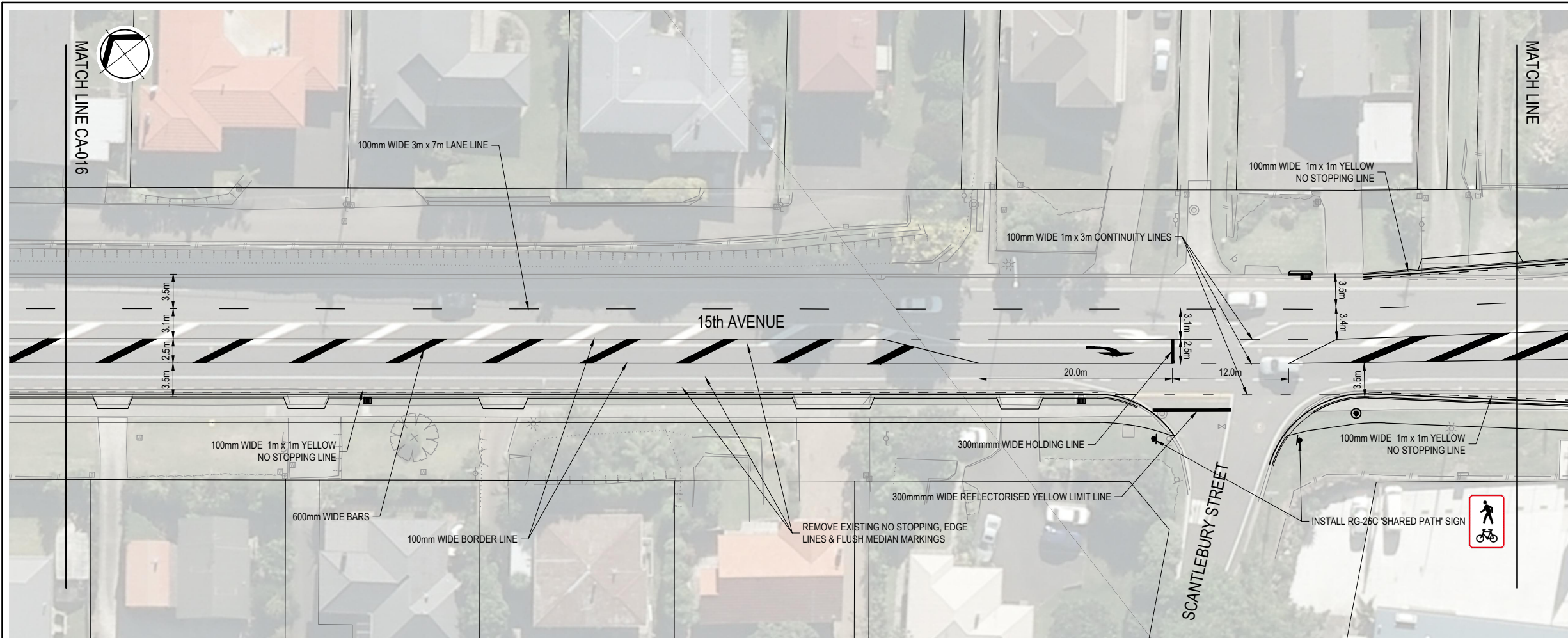
*Refer to Revision 1 for Original Signature



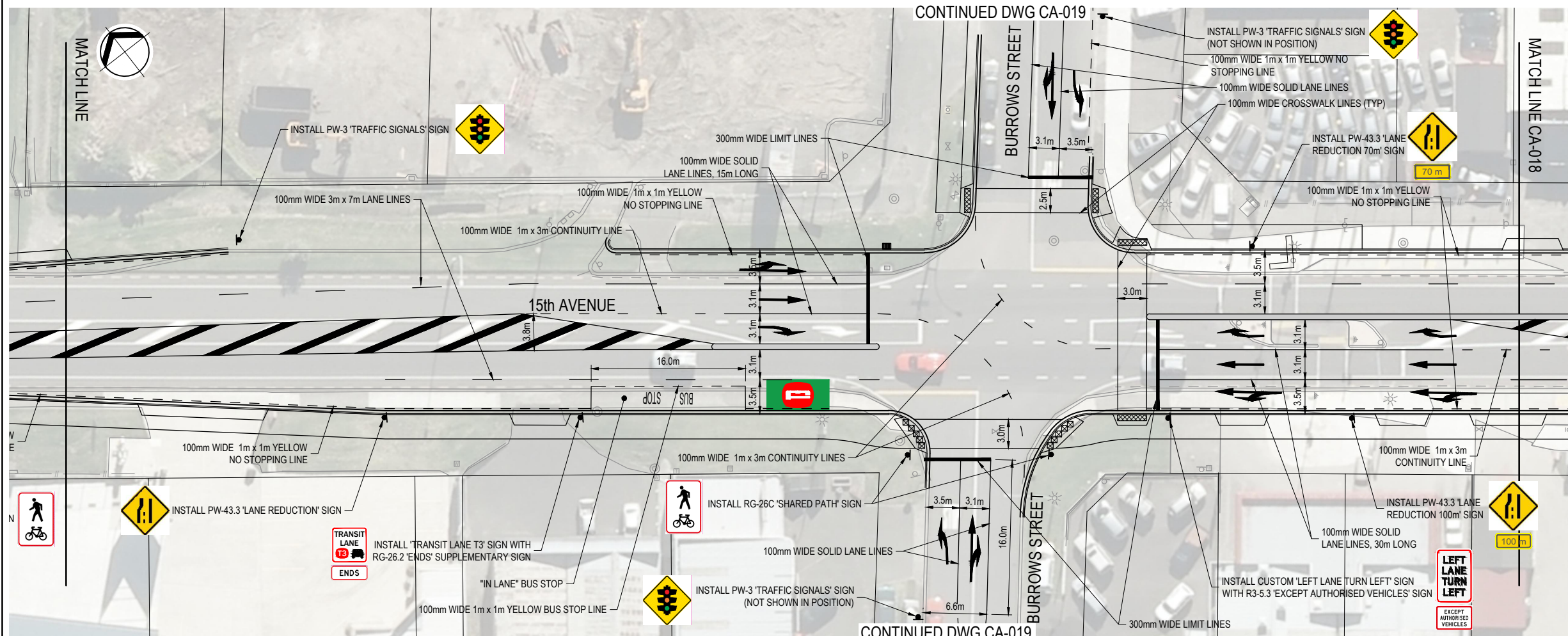
Client: Tauranga City
Project: 15th AVENUE CORRIDOR IMPROVEMENTS

Title: FRASER ST TO BURROWS ST WIDENING TO 3 LANES SIGNS & MARKINGS SHEET 1

Discipline	CIVIL ENGINEERING
Document No.	3934934-CA-016
Rev.	B



- NOTES:
- SIGNS TO BE IN ACCORDANCE WITH MOTSAM PART I
 - PAVEMENT MARKINGS TO BE IN ACCORDANCE WITH MOTSAM PART II, T3 MARKING IN ACCORDANCE WITH AUCKLAND TRANSPORT CODE OF PRACTICE
 - ALL PAINT TO BE REFLECTORISED WHITE UNLESS NOTED OTHERWISE
 - REDUNDANT MARKINGS TO BE REMOVED BY HYDRO BLASTING, REFER SPECIFICATIONS
 - MEASUREMENTS ARE FROM FACE OF KERB AND/OR TO CENTRE OF PAINTED ROAD MARKING



No.	Revision	By	Chk	Appd	Date
B	FOR SAFETY AUDIT	BIL	KNW	CMR	09.08.18
A	FOR INFORMATION - 80% DESIGN	BIL	KNW	TVH	21.06.18

Drawing Originator: **Beca**

Original Scale (A1)	1:250	Design	BIL	15.12.17	Approved For Construction*
Reduced Scale (A3)	1:500	Drawn	BIL	18.05.18	Date
		Dwg Verifier			
		Dwg Check			

* Refer to Revision 1 for Original Signature

Client: **Tauranga City**
 PRIVATE ROAD TAURANGA
 PHONE 07 577 5500

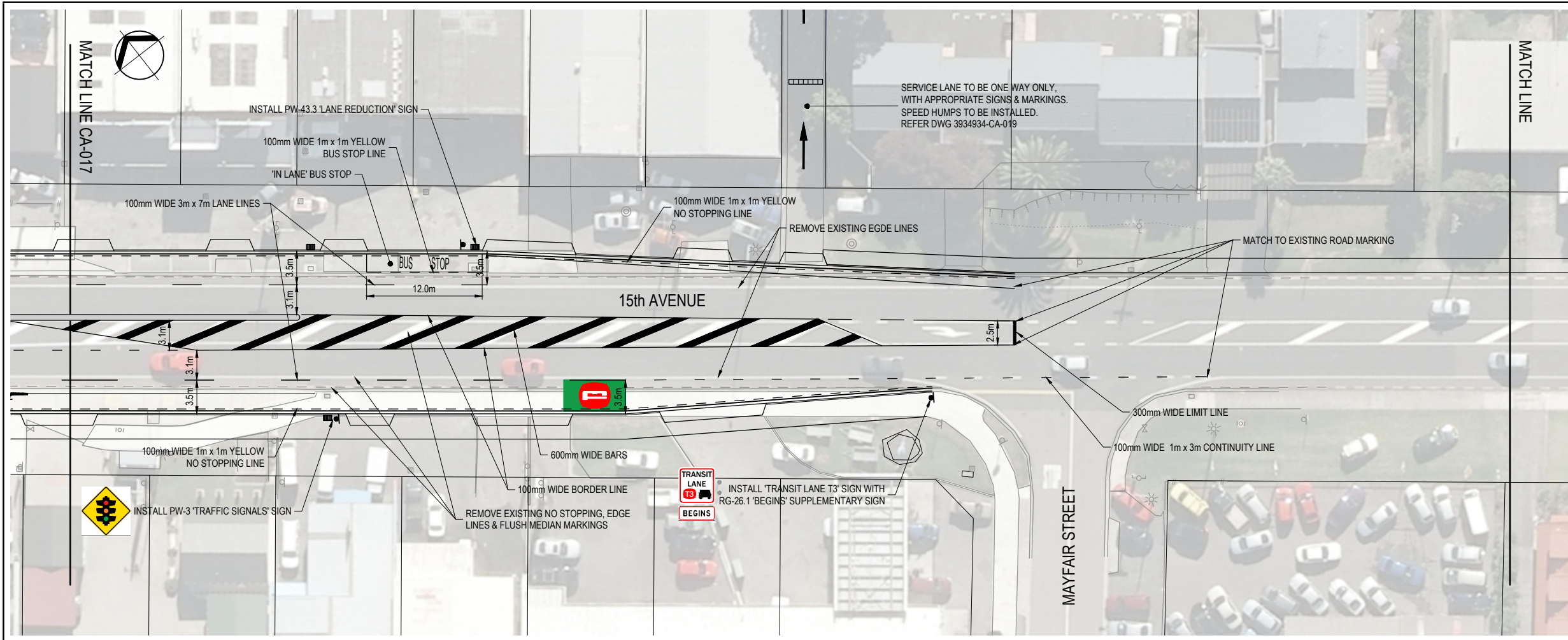
Project: **15th AVENUE CORRIDOR IMPROVEMENTS**

Title: **FRASER ST TO BURROWS ST WIDENING TO 3 LANES SIGNS & MARKINGS SHEET 2**

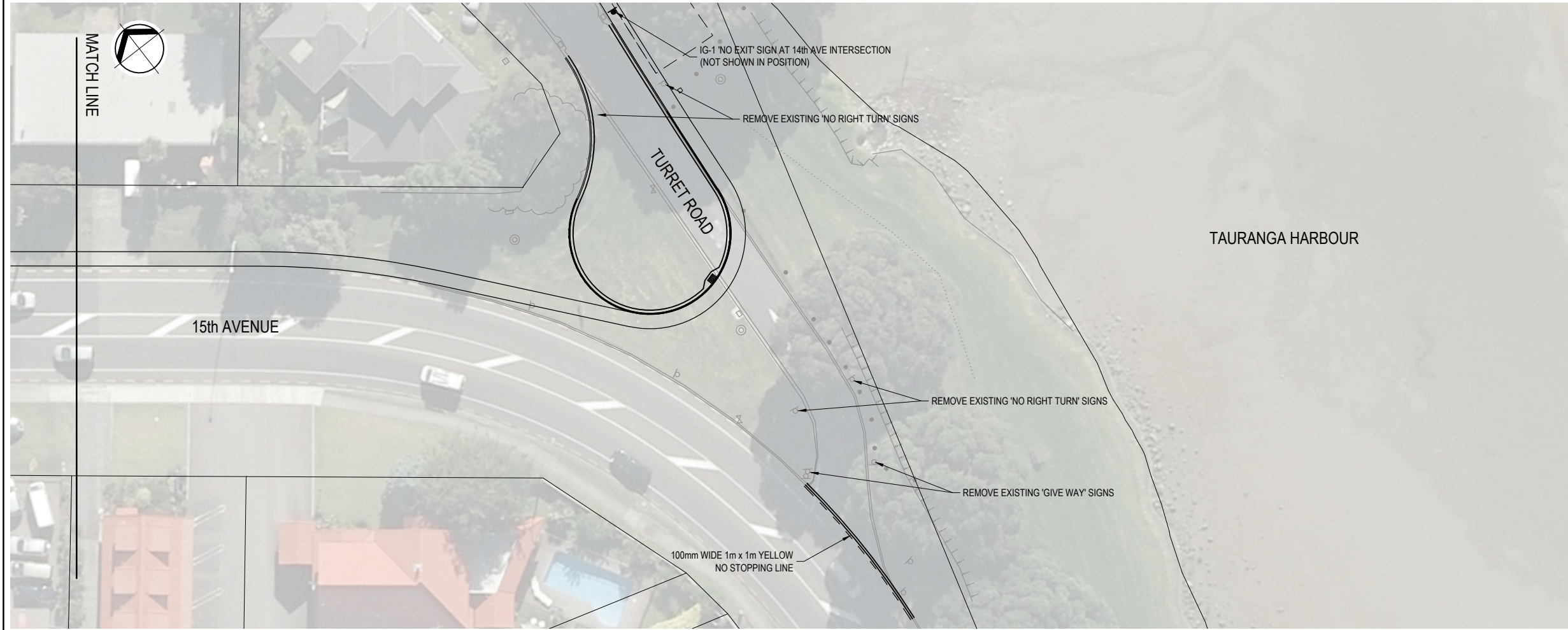
Discipline	CIVIL ENGINEERING
Drawing No.	3934934-CA-017
Rev.	B

FOR INFORMATION NOT FOR CONSTRUCTION

SAFETY AUDIT NOT FOR CONSTRUCTION



- NOTES:
1. SIGNS TO BE IN ACCORDANCE WITH MOTSAM PART I
 2. PAVEMENT MARKINGS TO BE IN ACCORDANCE WITH MOTSAM PART II, T3 MARKING IN ACCORDANCE WITH AUCKLAND TRANSPORT CODE OF PRACTICE
 3. ALL PAINT TO BE REFLECTORISED WHITE UNLESS NOTED OTHERWISE
 4. REDUNDANT MARKINGS TO BE REMOVED BY HYDRO BLASTING, REFER SPECIFICATIONS
 5. MEASUREMENTS ARE FROM FACE OF KERB AND/OR TO CENTRE OF PAINTED ROAD MARKING



**FOR INFORMATION
NOT FOR CONSTRUCTION**

**SAFETY AUDIT
NOT FOR CONSTRUCTION**

No.	Revision	By	Chk	Appd	Date
B	FOR SAFETY AUDIT	BIL	KNW	CMR	09.08.18
A	FOR INFORMATION - 80% DESIGN	BIL	KNW	TVH	21.06.18

Drawing Originator: **Beca**

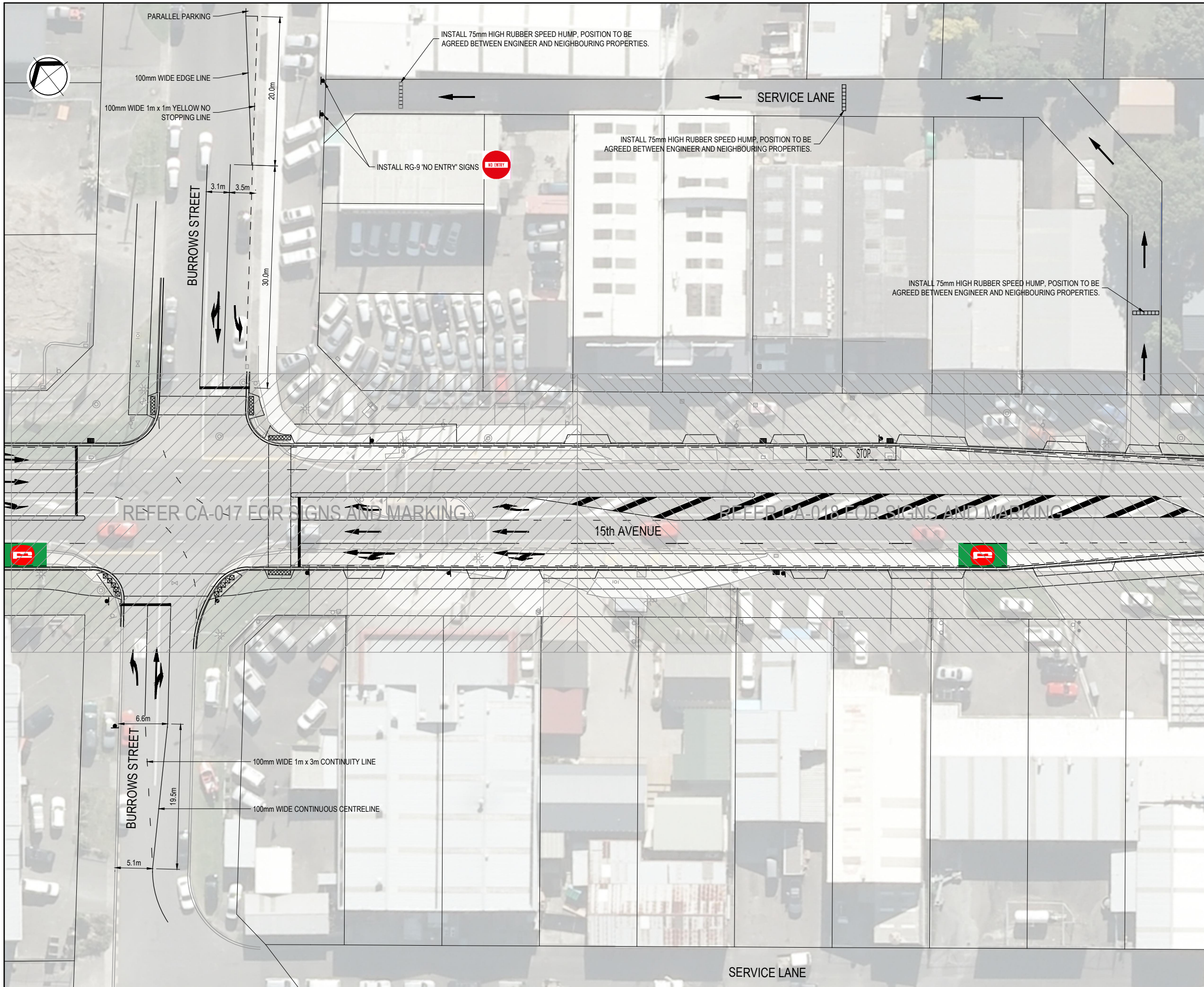
Original Scale (A1)	Design Drawn	BIL	15.12.17	Approved For Construction*
Reduced Scale (A3)	Design Check	BIL	18.05.18	Date
1:500	* Refer to Revision 1 for Original Signature			

Client: **Tauranga City**
PRIVATE ROAD, TAURANGA
PHONE: 071 877 500

Project: **15th AVENUE
CORRIDOR IMPROVEMENTS**

Title: **FRASER ST TO BURROWS ST
WIDENING TO 3 LANES
SIGNS & MARKINGS SHEET 3**

Discipline	CIVIL ENGINEERING
Drawing No.	3934934-CA-018
Rev.	B



- NOTES:
1. SIGNS TO BE IN ACCORDANCE WITH MOTSAM PART I
 2. PAVEMENT MARKINGS TO BE IN ACCORDANCE WITH MOTSAM PART II, T3 MARKING IN ACCORDANCE WITH AUCKLAND TRANSPORT CODE OF PRACTICE
 3. ALL PAINT TO BE REFLECTORISED WHITE UNLESS NOTED OTHERWISE
 4. REDUNDANT MARKINGS TO BE REMOVED BY HYDRO BLASTING, REFER SPECIFICATIONS
 5. MEASUREMENTS ARE FROM FACE OF KERB AND/OR TO CENTRE OF PAINTED ROAD MARKING

www.beca.com

www.beca.com

FOR INFORMATION
NOT FOR CONSTRUCTION

SAFETY AUDIT
NOT FOR CONSTRUCTION

A FOR SAFETY AUDIT		BIL	KNW	CMR	09.08.18
No.	Revision	By	Chk	Appd	Date



Original Scale (A1)	1:250	Design	BIL	15.12.17	Approved For Construction*
Reduced Scale (A3)	1:500	Drawn	BIL	18.05.18	Date
		Dwg Verifier			
		Dwg Check			

* Refer to Revision 1 for Original Signature

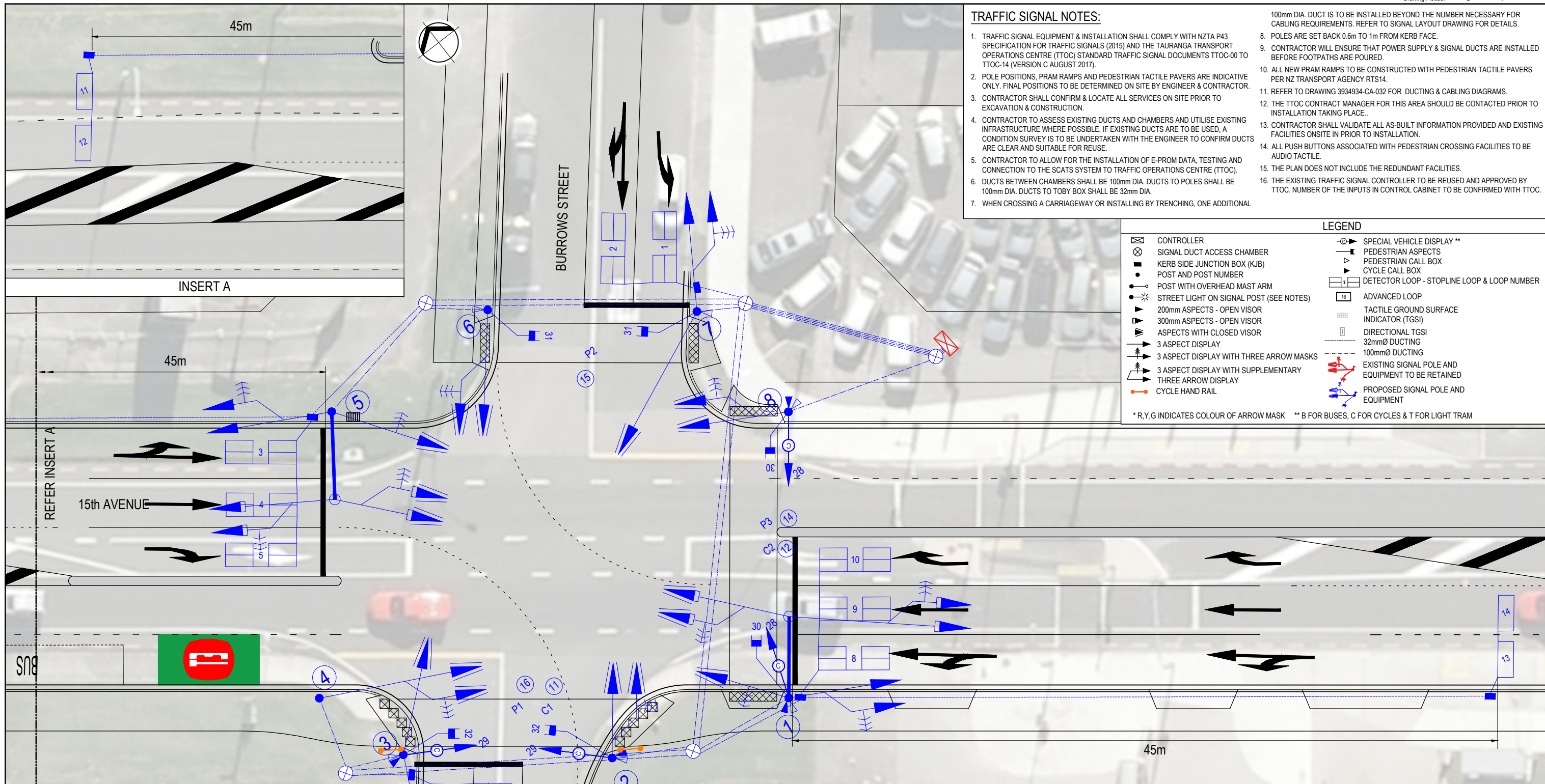


Client: Tauranga City
 PRIVATE ROAD TAURANGA
 PHONE 07 577 5500

Project: 15th AVENUE CORRIDOR IMPROVEMENTS

Title: FRASER ST TO BURROWS ST WIDENING TO 3 LANES SIGNS & MARKINGS SHEET 4

Discipline	CIVIL ENGINEERING
Drawing No.	3934934-CA-019
Rev.	A



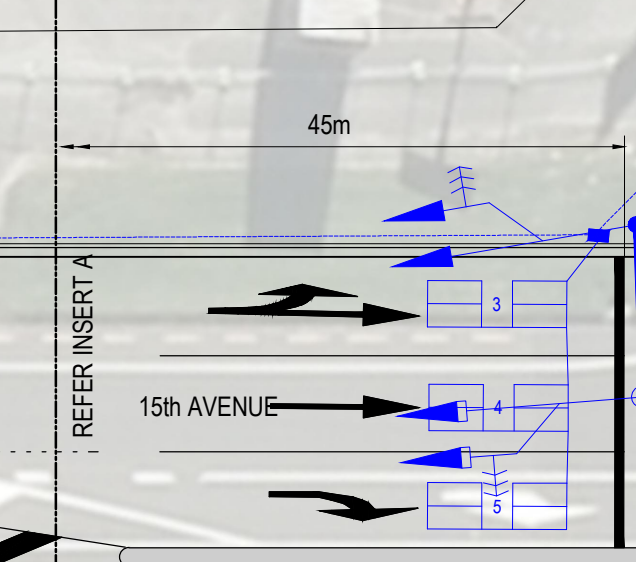
TRAFFIC SIGNAL NOTES:

1. TRAFFIC SIGNAL EQUIPMENT & INSTALLATION SHALL COMPLY WITH NZTA P43 SPECIFICATION FOR TRAFFIC SIGNALS (2015) AND THE TAURANGA TRANSPORT OPERATIONS CENTRE (TTOC) STANDARD TRAFFIC SIGNAL DOCUMENTS TTOC-00 TO TTOC-14 (VERSION C AUGUST 2017).
2. POLE POSITIONS, PRAM RAMP AND PEDESTRIAN TACTILE PAVERS ARE INDICATIVE ONLY. FINAL POSITIONS TO BE DETERMINED ON SITE BY ENGINEER & CONTRACTOR.
3. CONTRACTOR SHALL CONFIRM & LOCATE ALL SERVICES ON SITE PRIOR TO EXCAVATION & CONSTRUCTION.
4. CONTRACTOR TO ASSESS EXISTING DUCTS AND CHAMBERS AND UTILISE EXISTING INFRASTRUCTURE WHERE POSSIBLE. IF EXISTING DUCTS ARE TO BE USED, A CONDITION SURVEY IS TO BE UNDERTAKEN WITH THE ENGINEER TO CONFIRM DUCTS ARE CLEAR AND SUITABLE FOR REUSE.
5. CONTRACTOR TO ALLOW FOR THE INSTALLATION OF E-PRAM DATA, TESTING AND CONNECTION TO THE SCATS SYSTEM TO TRAFFIC OPERATIONS CENTRE (TTOC).
6. DUCTS BETWEEN CHAMBERS SHALL BE 100mm DIA. DUCTS TO POLES SHALL BE 100mm DIA. DUCTS TO TOBY BOX SHALL BE 32mm DIA.
7. WHEN CROSSING A CARRIAGEWAY OR INSTALLING BY TRENCHING, ONE ADDITIONAL 100mm DIA. DUCT IS TO BE INSTALLED BEYOND THE NUMBER NECESSARY FOR CABLING REQUIREMENTS. REFER TO SIGNAL LAYOUT DRAWING FOR DETAILS.
8. POLES ARE SET BACK 0.6m TO 1m FROM KERB FACE.
9. CONTRACTOR WILL ENSURE THAT POWER SUPPLY & SIGNAL DUCTS ARE INSTALLED BEFORE FOOTPATHS ARE POURED.
10. ALL NEW PRAM RAMP TO BE CONSTRUCTED WITH PEDESTRIAN TACTILE PAVERS PER NZ TRANSPORT AGENCY RTS14.
11. REFER TO DRAWING 3934934-CA-032 FOR DUCTING & CABLING DIAGRAMS.
12. THE TTOC CONTRACT MANAGER FOR THIS AREA SHOULD BE CONTACTED PRIOR TO INSTALLATION TAKING PLACE..
13. CONTRACTOR SHALL VALIDATE ALL AS-BUILT INFORMATION PROVIDED AND EXISTING FACILITIES ONSITE IN PRIOR TO INSTALLATION.
14. ALL PUSH BUTTONS ASSOCIATED WITH PEDESTRIAN CROSSING FACILITIES TO BE AUDIO TACTILE.
15. THE PLAN DOES NOT INCLUDE THE REDUNDANT FACILITIES.
16. THE EXISTING TRAFFIC SIGNAL CONTROLLER TO BE REUSED AND APPROVED BY TTOC. NUMBER OF THE INPUTS IN CONTROL CABINET TO BE CONFIRMED WITH TTOC.

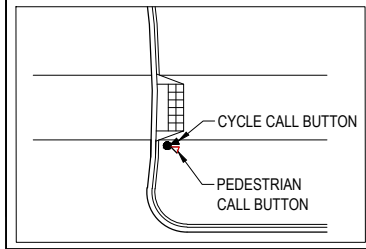
LEGEND

- ⊗ CONTROLLER
 - ⊗ SIGNAL DUCT ACCESS CHAMBER
 - KERB SIDE JUNCTION BOX (KJB)
 - POST AND POST NUMBER
 - POST WITH OVERHEAD MAST ARM
 - STREET LIGHT ON SIGNAL POST (SEE NOTES)
 - ▲ 200mm ASPECTS - OPEN VISOR
 - ▲ 300mm ASPECTS - OPEN VISOR
 - ▲ ASPECTS WITH CLOSED VISOR
 - ▲ 3 ASPECT DISPLAY
 - ▲ 3 ASPECT DISPLAY WITH THREE ARROW MASKS
 - ▲ 3 ASPECT DISPLAY WITH SUPPLEMENTARY THREE ARROW DISPLAY
 - CYCLE HAND RAIL
 - ⊗ SPECIAL VEHICLE DISPLAY **
 - ▲ PEDESTRIAN ASPECTS
 - ▲ PEDESTRIAN CALL BOX
 - ▲ CYCLE CALL BOX
 - DETECTOR LOOP - STOPLINE LOOP & LOOP NUMBER
 - ADVANCED LOOP
 - TACTILE GROUND SURFACE INDICATOR (TGS)
 - DIRECTIONAL TGS
 - 32mmØ DUCTING
 - 100mmØ DUCTING
 - EXISTING SIGNAL POLE AND EQUIPMENT TO BE RETAINED
 - PROPOSED SIGNAL POLE AND EQUIPMENT
- * R,Y,G INDICATES COLOUR OF ARROW MASK ** B FOR BUSES, C FOR CYCLES & T FOR LIGHT TRAM

INSERT A



NOTE:
SEPARATE CALL BUTTONS REQUIRED FOR PEDESTRIANS AND CYCLISTS WHERE SHARED PATH CROSSING PROPOSED. CALL BUTTON LAYOUT SUGGESTIONS AS NOTED BELOW WITH BOTH POSITIONED ON SIGNAL POLE. HEIGHT OF PEDESTRIAN CALL BUTTON TO CLEAR HEIGHT OF RAIL. FINAL POSITIONS ARE TO BE CO-ORDINATED WITH TTOC CONTRACT MANAGER FOR AREA. REFER DETAIL 1.



TRAFFIC SIGNAL POLE NUMBER	TRAFFIC SIGNAL POLE TYPE
1 - NEW	MAST ARM SIGNAL POLE WITH 5M OUTREACH
2 - NEW	5M STANDARD POLE
3 - NEW	5M STANDARD POLE
4 - NEW	5M STANDARD POLE
5 - NEW	MAST ARM SIGNAL POLE WITH 5M OUTREACH
6 - NEW	5M STANDARD POLE
7 - NEW	5M STANDARD POLE
8 - NEW	5M STANDARD POLE

FOR INFORMATION NOT FOR CONSTRUCTION

SAFETY AUDIT NOT FOR CONSTRUCTION

B	FOR SAFETY AUDIT	BIL	KNW	CMR	09.08.18
A	FOR CLIENT REVIEW - 80% DESIGN	MW	MY	MY	13.06.18
No.	Revision	By	Chk	Appd	Date

Drawing Originator:
Beca

Original Scale (A1)	1:125	Design	MW	Approved For Construction*
Reduced Scale (A3)	1:250	Drawn	MW	Date
		Dwg Verifier	MY	
		Dwg Check	MY	

* Refer to Revision 1 for Original Signature

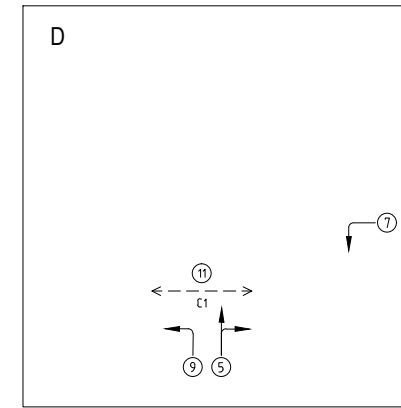
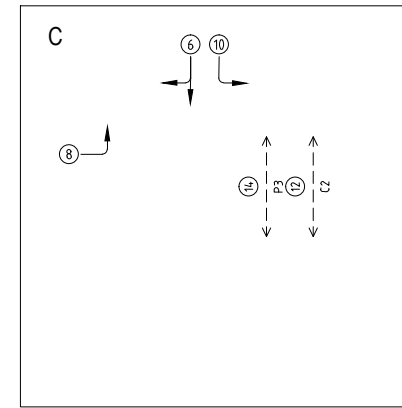
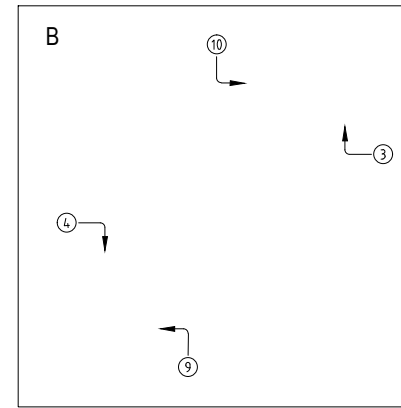
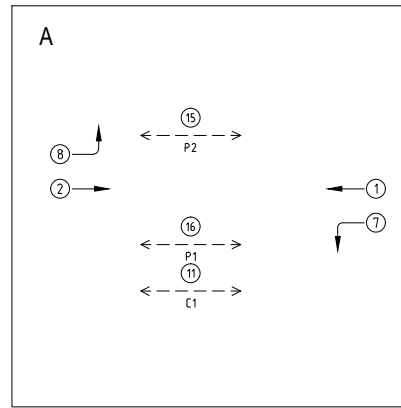
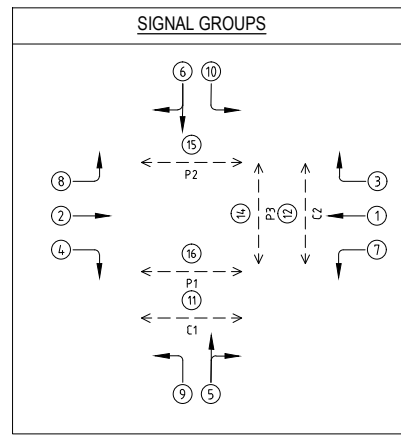
Client:
Tauranga City
 PRIVATE BAG 7 TAURANGA
 PHONE 071 071 7000

Project:
15th AVENUE CORRIDOR IMPROVEMENTS

Title:
BURROWS ST TRAFFIC SIGNAL DESIGN

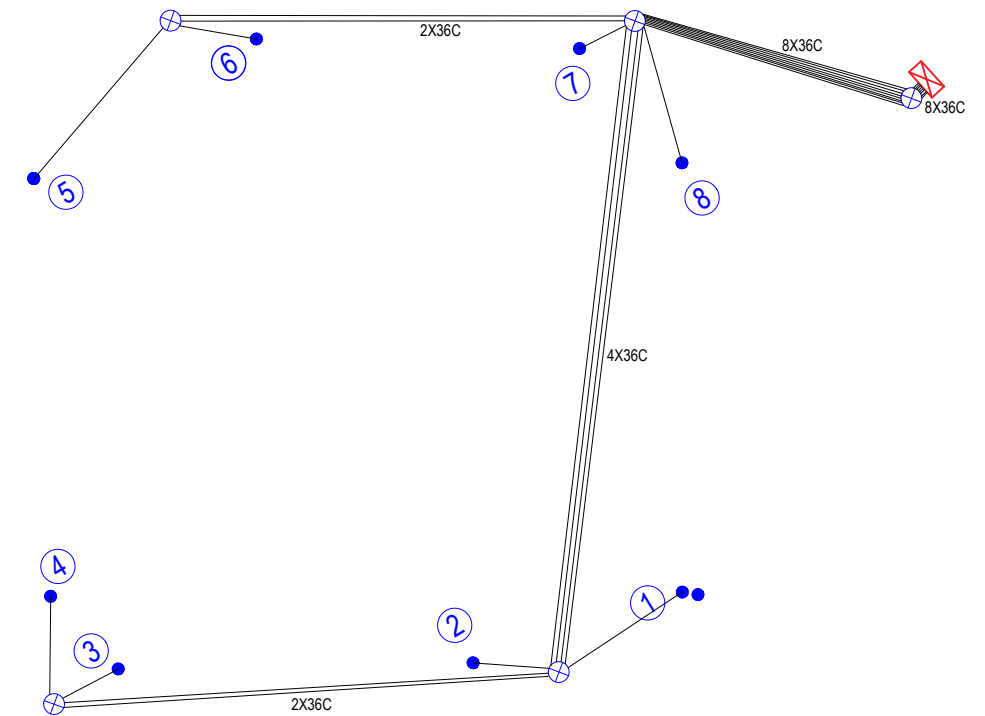
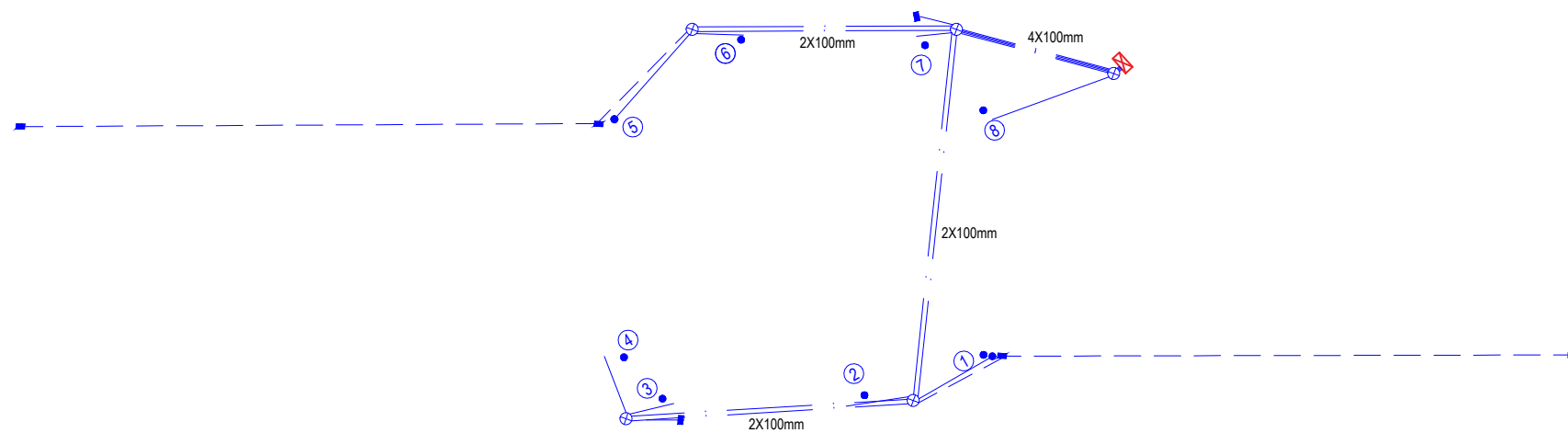
Discipline	CIVIL ENGINEERING
Drawing No.	3934934-CA-031
Rev.	B

SIGNAL PHASING 15TH AVE/BURROWS ST INTERSECTIONS



NOTE:

- PARTIAL PROTECTION PROVIDED FOR ALL PEDESTRIAN CROSSING.
- FULL PROTECTION FOR ALL CYCLE CROSSING.
- IF BOTH OF PEDESTRIAN AND CYCLE CROSSING ARE CALLED AT THE SAME TIME, RUN PEDESTRIAN CROSSING.
- PHASE SEQUENCE: ABCD.



**FOR INFORMATION
NOT FOR CONSTRUCTION**

**SAFETY AUDIT
NOT FOR CONSTRUCTION**

No.	Revision	By	Chk	Appd	Date
A	FOR CLIENT REVIEW - 80% DESIGN	MW	MY	MY	13.06.18
B	FOR SAFETY AUDIT	BIL	KNW	CMR	09.08.18



Original Scale (A1)	N.T.S	Design	MW	Approved For Construction*
Reduced Scale (A3)	N.T.S	Drawn	MW	Date
		Dwg Verifier	MY	
		Dwg Check	MY	

* Refer to Revision 1 for Original Signature



Project: 15th AVENUE CORRIDOR IMPROVEMENTS

Title: BURROWS ST TRAFFIC SIGNAL DESIGN

Discipline	CIVIL ENGINEERING
Drawing No.	3934934-CA-032
Rev.	B