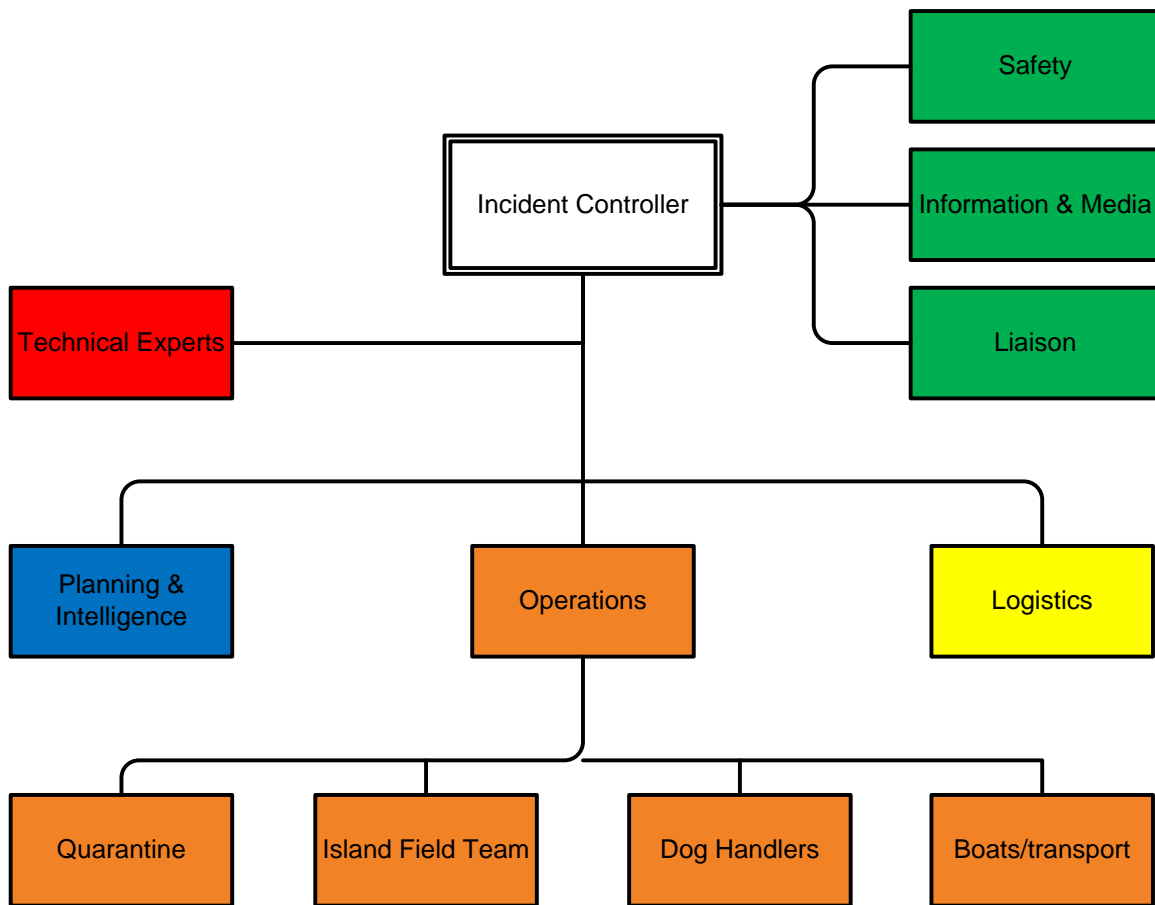


Incursion response flow charts

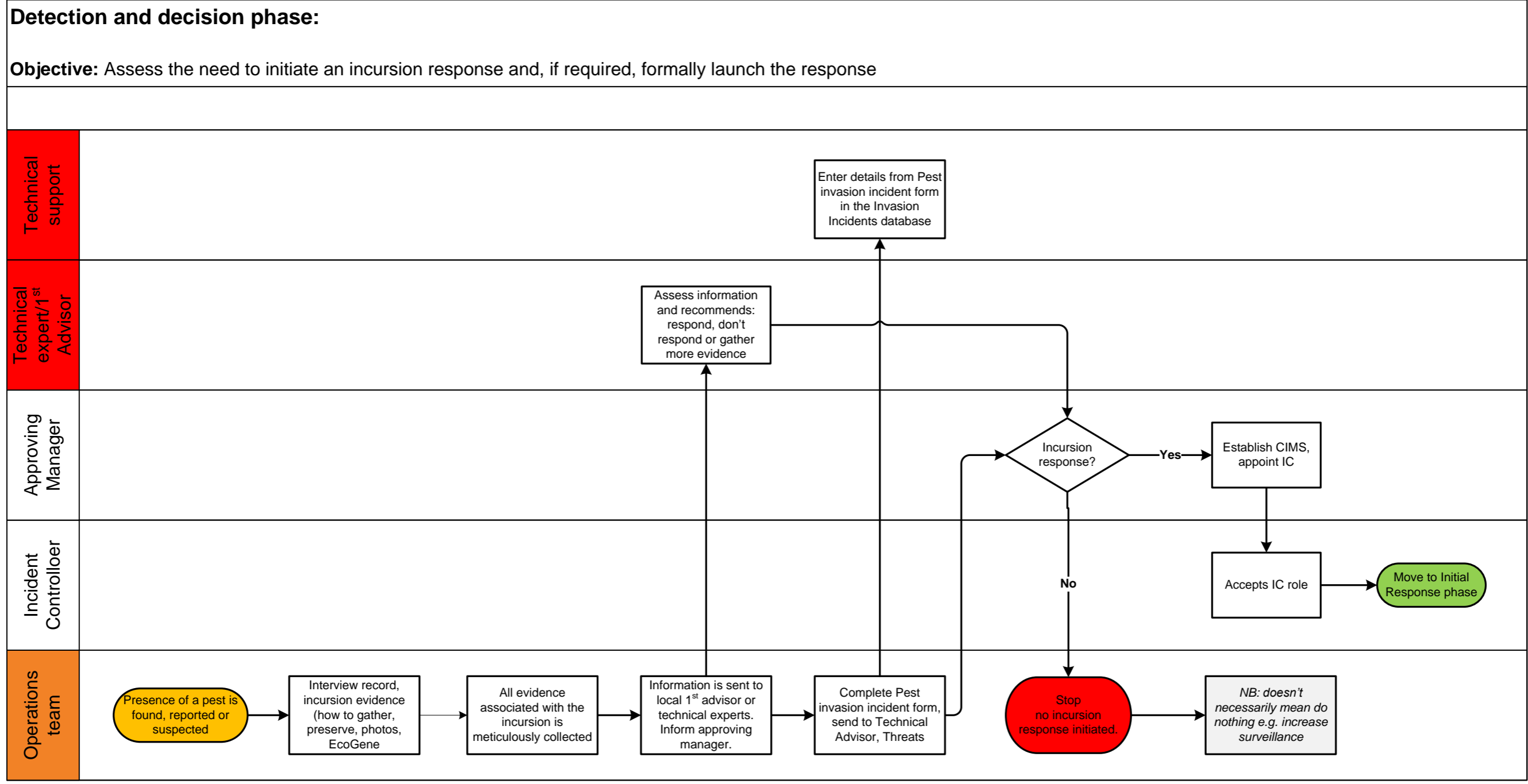
Contents

Island biosecurity incursion response CIMS	2
Detection and decision phase.....	3
Initial response phase	4
Sustained response phase	5
Toxin use phase.....	6
Wind down phase	7
Debrief phase.....	8

Island biosecurity incursion response CIMS



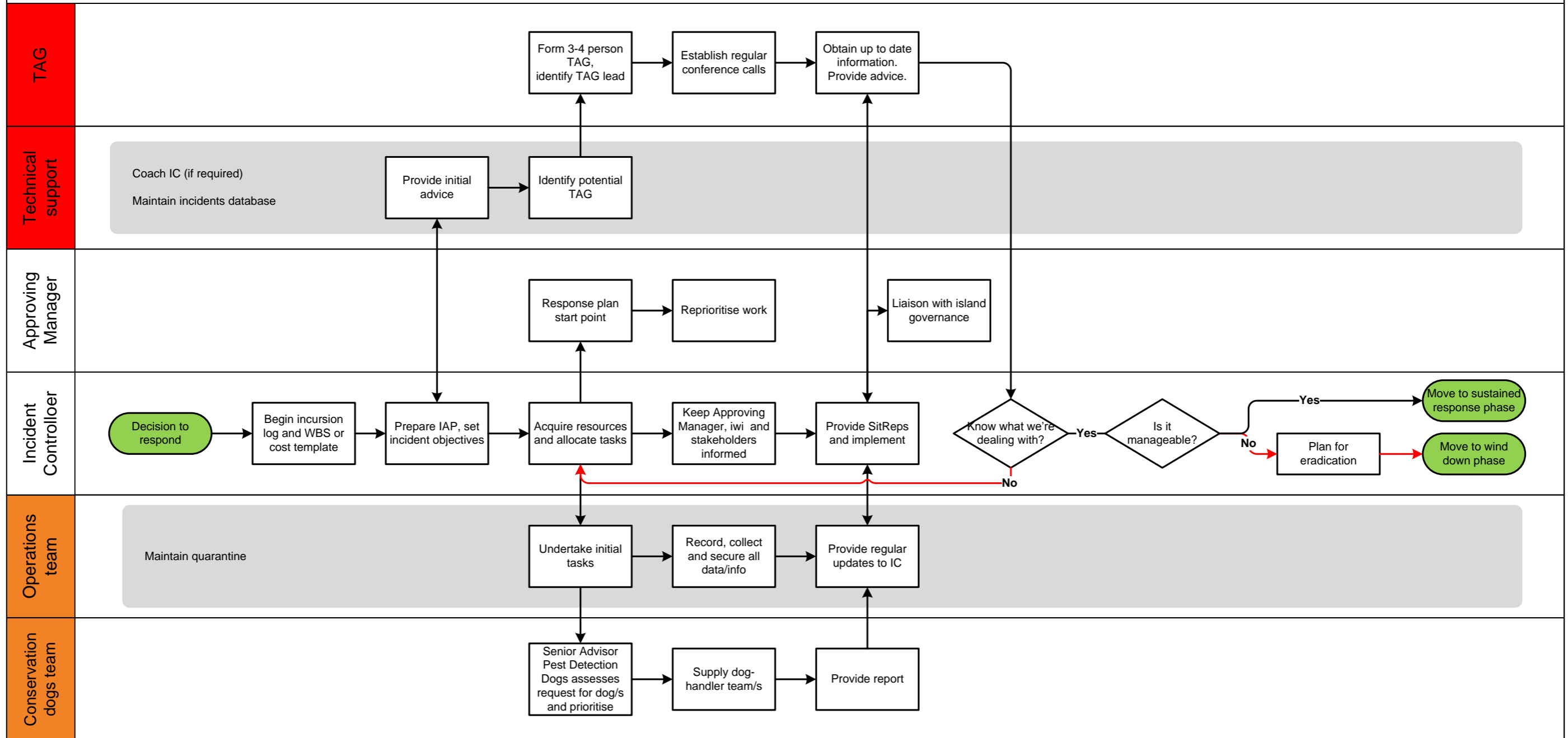
Detection and decision phase



Initial response phase

Initial Response phase:

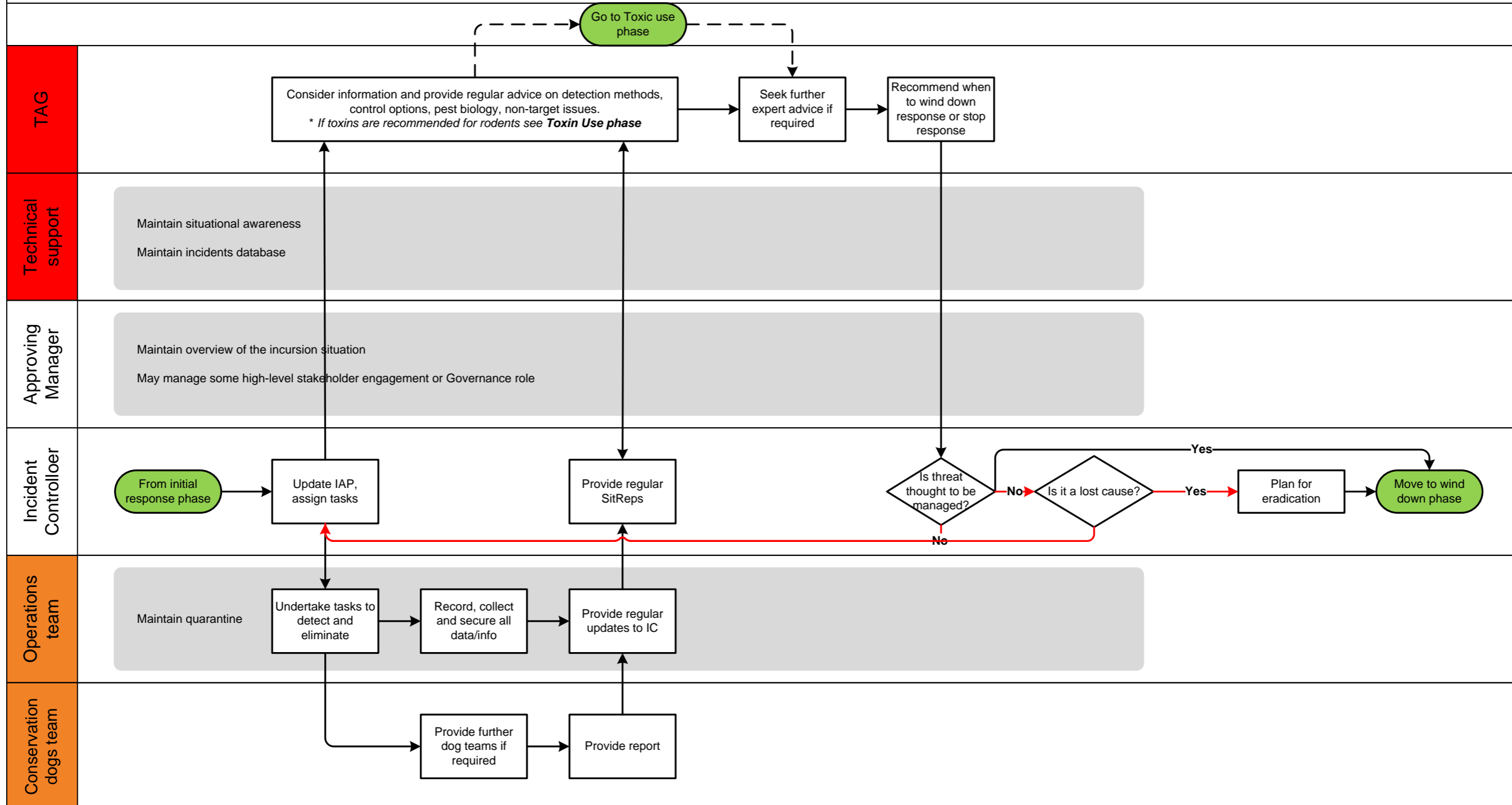
Objective: Confirm what we are dealing with and eliminate the pest if we can



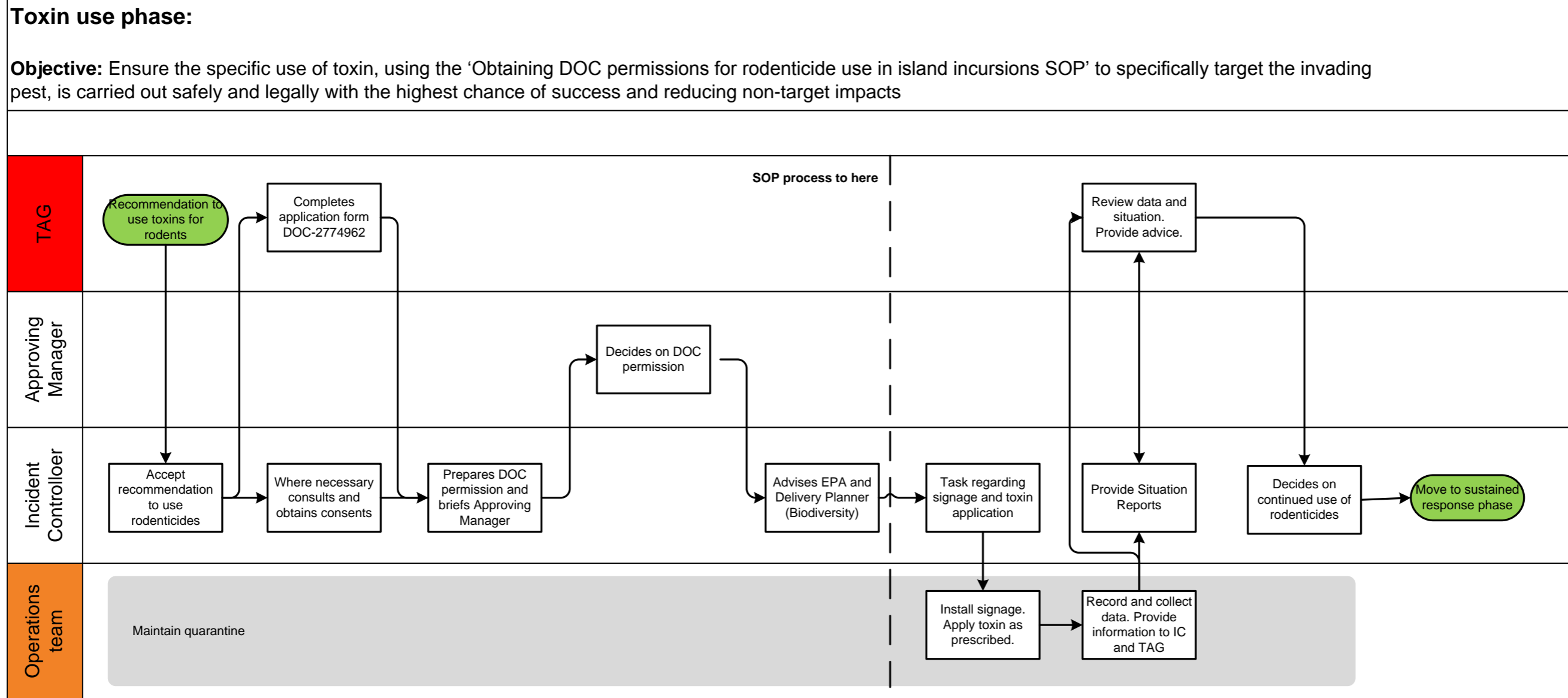
Sustained response phase

Sustained response phase:

Objective: Detect and eliminate all individual pests the incursion response is targeting.



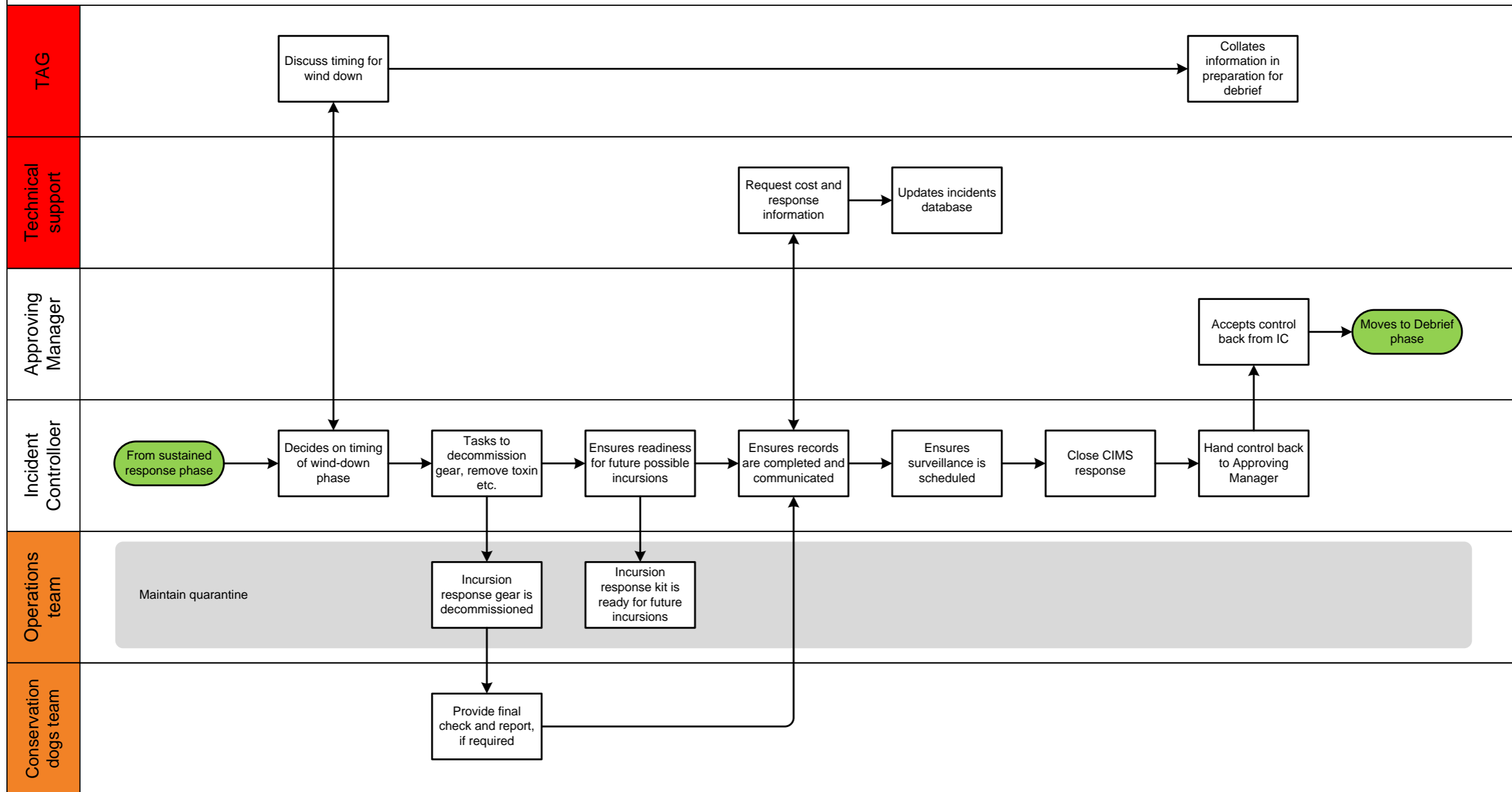
Toxin use phase



Wind down phase

Wind down phase:

Objective: Provide confidence that no individual pests have escaped detection whilst operationally moving from response to regular surveillance and ensuring that adequate supplies, equipment and trained staff are available for future incursions.



Debrief phase

Debrief phase:

Objective: Ensure that an examination of the incursion response is undertaken to evaluate readiness and the operational response, to document the incident and recommend improvements and to communicate the findings.

