

1. Pigeon Valley	2. 6 Feb2019 0700 to 1900
------------------	---------------------------

Sector Assignment

RF204

3. Sector		4. Description		5. Division Assigned	
6. Sector Supervisor		Affiliation	Cellphone	Radio Ch	
7. Resources Assigned this period					
<i>Resource/Crew</i>	<i>Leader</i>	<i># Persons</i>	<i>Transport Required</i>	<i>Drop-off Point/time</i>	<i>Pickup Point/time</i>
8. Sector Assignment / Special Instructions					
9. Sector Communications					
Division/Division Cmdr			<i>Phone</i>	<i>Radio Ch</i>	
Air Attack Supervisor					
Safety Officer					

Prepared by: [REDACTED]	Date: 6 Feb2019	Time: 1500
-------------------------	-----------------	------------

1. Pigeon Valley	2. 6 Feb2019 0700 to 1900
------------------	---------------------------

Division Assignment

RF204a

3. Pigeon		4. Point of ignition to Dove Saddle		
6. Sector Commander	Affiliation	Cellphone	Radio Ch	
6. Resources Assigned this Period				
<i>Sector</i>	<i>Supervisor</i>	<i>Crews</i>	<i>Radio Ch</i>	
1 Ground Crew				
1 Smoke chaser				
1 Appliance				
7. Division Assignment/Special Instructions Protect Life and Property Keep Residents and Stakeholders informed in preparation for potential north easterly wind change Provide Situation Report to Situations Unit at least every two hours *Laydown Retardant to protect properties				
8. Division Communications		<i>Phone</i>	<i>Radio Ch</i>	
Operations Manager _____				
Air Division Commander _____				

Prepared by: ██████████	Date: 6 Feb2019	Time: 1500
---	-----------------	------------

1. Pigeon Valley	2. 6 Feb2019 0700 to 1900
------------------	---------------------------

Division Assignment

RF204a

3. Haytons		4. Point of ignition to Teapot Valley Rd end	
6. Sector Commander	Affiliation	Cellphone	Radio Ch
6. Resources Assigned this Period			
<i>Sector</i>	<i>Supervisor</i>	<i>Crews</i>	<i>Radio Ch</i>
1 Ground Crew			
1 Smoke chaser			
1 Appliance			
7. Division Assignment/Special Instructions Protect life and Property Keep Residents and Stakeholders informed in preparation for potential north easterly wind change Provide Situation Report to Situations Unit at least every two hours *Laydown Retardant to protect properties 100C Lakes Crew			
8. Division Communications		<i>Phone</i>	<i>Radio Ch</i>
Operations Manager _____			
Air Division Commander _____			

Prepared by: ██████████	Date: 6 Feb2019	Time: 1500
---	-----------------	------------

1. Pigeon Valley	2. 6 Feb2019 0700 to 1900
------------------	---------------------------

Division Assignment

RF204a

3. Teapot		4. Eves Valley Rd to Golden Hills Rd		
6. Sector Commander	Affiliation	Cellphone	Radio Ch	
6. Resources Assigned this Period				
<i>Sector</i>	<i>Supervisor</i>	<i>Crews</i>	<i>Radio Ch</i>	
1 Ground Crew				
1 Smoke chaser				
1 Appliance				
7. Division Assignment/Special Instructions				
Protect life and Property				
Keep Residents and Stakeholders informed in preparation for potential north easterly wind change				
Urban crew for Protection of Eves Valley Mill or other properties as required				
Provide Situation Report to Situations Unit at least every two hours				
*Laydown Retardant to protect properties				
8. Division Communications				
Operations Manager		<i>Phone</i>	<i>Radio Ch</i>	
Air Division Commander				

Prepared by: ██████████	Date: 6 Feb2019	Time: 1500
---	-----------------	------------

1. Pigeon Valley	2. 6 Feb2019 0700 to 1900
------------------	---------------------------

Division Assignment

RF204a

3. Redwood		4. Golden Hills Rd to Cut Hill Rd		
6. Sector Commander		Affiliation	Cellphone	Radio Ch
6. Resources Assigned this Period				
<i>Sector</i>	<i>Supervisor</i>	<i>Crews</i>	<i>Radio Ch</i>	
2 Ground Crew				
2 Smoke chaser				
1 Appliance				
-				
7. Division Assignment/Special Instructions Protect Life and Property Keep Residents and Stakeholders informed in preparation for potential north easterly wind change Property/Infrastructure Protection by ground crew Contain fire South of Moutere Highway and West Golden Hills Rd Urban crew for protection of Eves Valley Hazardous Landfill Provide Situation Report to Situations Unit at least every two hours Build containment lines where practical in light fuel areas. *Laydown Retardant to protect properties and provide containment				
8. Division Communications		<i>Phone</i>	<i>Radio Ch</i>	
Operations Manager _____				
Air Division Commander _____				

Prepared by: ██████████	Date: 6 Feb2019	Time: 1500
-------------------------	-----------------	------------

1. Pigeon Valley	2. 6 Feb2019 0700 to 1900
------------------	---------------------------

Division Assignment

RF204a

3. Moutere		4. Cut Hill Rd to Dove Hill Saddle		
6. Sector Commander ██████████	Affiliation Bruce Forestry	Cellphone ██████████	Radio Ch Fire 2	
6. Resources Assigned this Period				
<i>Sector</i>	<i>Supervisor</i>	<i>Crews</i>	<i>Radio Ch</i>	
1 Ground Crew				
1 Smoke chaser				
1 Appliance				
7. Division Assignment/Special Instructions				
Protect Life and Property				
Keep Residents and Stakeholders informed in preparation for potential north easterly wind change				
Excavator to Identify and Establish high volume water access to existing ponds				
1x Bulldozer for Property/Infrastructure Protection, sunrise valley, establish escape routes				
Taylors Excavator to establish escape route/access down Supplejack Valley rd and Sunrise/Heines rd				
Develop Containment lines from Cut Hill to Eder Road where safe to do so. Consider and plan for additional containment lines through Dovedale saddle.				
Provide Situation Report to Situations Unit at least every two hours				
*Laydown Retardant to protect properties				
8. Division Communications		<i>Phone</i>	<i>Radio Ch</i>	
Operations Manager				
Air Division Commander				

Prepared by: ██████████	Date: 6 Feb2019	Time: 1500
-------------------------	-----------------	------------

Communications Plan

RF205

3. Radio Channels				
<i>Assigned To</i>	<i>Function</i>	<i>Channel</i>	<i>Frequency</i>	<i>System</i>
Command		Waimea 1	152.55000 RX 154.33125 TX	
Division Pigeon	Operational	Fire 1	143.82500	
Division Hayton	Operational	Fire 2	143.78750	
Division Teapot	Operational	Fire 3	140.92500	
Division Redwood	Operational	Fire 1	143.82500	
Division Moutere	Operational	Fire 2	143.78750	
Air Ops -Heli	Operational	Fire 4	140.61250	
Air Ops – Fixed Wing	Operational	Fire 10	140.98750	
Emergency		Waimea 1	152.55000 RX 154.33125 TX	
FireCom		FireCom		
4. Telephone				
<i>Assigned To</i>	<i>Landline</i>	<i>Cell phone</i>	<i>Fax</i>	<i>Comments</i>
Emergency		111		
Regional Command Centre (RCC)				
6. Other (e.g. email, Satphone, etc)				
GIS Mapping	planning.intelligence@nelsontasmancdem.govt.nz			
ICP	Reception.nelsontasman@fireemergency.nz			
Command Unit	lcu.nelson@fireemergency.nz			

Safety Plan

RF209

3. General Safety Points

Everyone is to be signed in and out of the fire ground through the Incident Control Point for both safety check and payment records.

Maintain regular situation reports (containing all relevant information) via line supervisors.

LACES	Fire Orders	Watchouts
<p>L - Lookout(s)</p> <p>A – Awareness</p> <p> – Anchor Point(s)</p> <p>C – Communication(s)</p> <p>E – Escape Route(s)</p> <p>S – Safety Zone(s)</p>	<ol style="list-style-type: none"> 1. conditions and forecasts 2. Know what your fire is doing at all times. 3. Base all actions on current and expected fire behaviour of the fire. 4. Identify escape routes and safety zones and make them known. 5. Post lookouts when there is possible danger. 6. Stay alert. Keep calm, Think clearly, act decisively. 7. Maintain prompt communication with your crew/s, your supervisor and adjoining crews. 8. Give clear instructions and ensure they are understood. 9. Maintain control of your crew/s at all times. 10. Fight fire aggressively having provided for safety first. 	<ol style="list-style-type: none"> 1. Fire size is unknown (no size up). 2. Unfamiliar territory 3. Safety zones and escape routes not identified. 4. Unfamiliar with weather and local factors influencing fire behaviour. 5. No communications link with crew members or supervisor. 6. Instructions and assignments not clear. 7. Weather is getting hotter , drier and relative humidity dropping 8. Wind increases and/or changes direction. 9. Getting frequent spot fires across the line 10. Working uphill or downwind of a fire 11. Working on a steep slope 12. Working in rugged terrain 13. Can't see main fire 14. In unburnt vegetation 15. Walking through hot ashes 16. Working alone 17. Getting tired 18. Working near power lines 19. Working near machinery 20. Working with aircraft 21. Working around trees or spars

4. Specific Safety Points

- **Access points into fire controlled. Only those authorized to enter and they must receive a brief and be logged in. Time and access point**
- **Public access Managed**
- **Weather fire behaviour monitored for changes and communicated to crews. Risk identified to crews**
- **All crews to have adequate food, water, PPE to manage fatigue and hydration**
- **Crews to have identified emergency escape routes and emergency plan in the event of harm. Meeting point identified once evacuated.**
- **All workers to ensure they are competent for the tasks and risks given.**
- **Air and ground crews to be isolated from risk areas during operations.**
- **Potential methane flares (Division Hayton) from Eves Valley Landfill**

1. Pigeon Valley	2. 6 Feb2019 0700 to 1900
------------------	---------------------------

Medical Plan

RF206

3. First Aid Station		Phone/Radio Channel	Paramedics available at Station				
Name	Location						
Each Crew must have available one First aid Level 1 Certified	Each crew						
Nelson 91 Ambulance	Forward command post	Waimea 1	1 Paramedic and 1 EMT				
4. Transportation Ambulance Service		Address	Phone/Radio Channel	Paramedics available with Ambulance			
Ambulance St Johns	Richmond station	111	Yes				
	Motueka/Stoke Nelson/						
5. Hospitals		Address	Phone	Travel Time		Burn Unit	Heli Pad
Hospital Name				Road	Air		
Nelson Public Emergency	Waimea Rd.	035461800	27m	4min	y	y	
Hutt Hospital (Burn Unit)		045666999	n/a	40min	Y	y	
6. Special Emergency Procedures							
Emergency Helicopter stationed at Nelson Airport "111"							
8. Reviewed by Safety Advisor:						Date/Time	

Prepared by: [REDACTED]	Date: 6 Feb2019	Time: 1500
-------------------------	-----------------	------------

1. Pigeon Valley	2. 6 Feb2019 0700 to 1900
------------------	---------------------------

FIRE WEATHER FORECAST

Attention Tasman Fire CD

FIRE WEATHER FORECAST

For Location [REDACTED] Pigeon Valley near Wakefield

Issued by MetService at 08:55am 06-Feb-2019, and valid for the following 9 hours

Wind: East to northeast 15-20km/h gusting 25-30km/h rising to east to southeast 25km/h gusting 40km/h this afternoon.

Precipitation: Remaining drizzle clearing this morning - Less than 1mm.

Temperature: Rising to 20-21C this afternoon.

Humidity: 65% lowering to 40-50% this afternoon.

Outlook for the next 12 hours :

Mailny fine, some cloud about. Temperatures lowering to 10-12C.

Humidity increasing to 70-80%. Southeast easing to 10-15km/h.

Outlook for next 6 days:

Thursday: Light winds, sunny, dry and max temperature around 21C.

Friday: Light winds, sunny, dry and max temperature around 20C.

Saturday: Light winds, sunny, dry and max temperature around 22C.

Sunday: Northerlies, partly cloudy, a few light showers and max temperature about 22C.

Monday: Northerlies and rain, max temperature arond 21C.

Tuesday: Light winds, sunny and max temperature around 23C.

Fire Indices for Wednesday 6th Feb 2019 (8:00am)

FFMC 83 (easy Ignition)

DMC 95.8

DC 451.1

ISI 2.9 (moderately fast rate)

BUI 125.1 (Extreme)

FWI 14.5 (high fire intensity)

Prepared by: [REDACTED]	Date:6 Feb2019	Time: 1500
-------------------------	----------------	------------

1. Pigeon Valley	2. 6 Feb2019 0700 to 1900
------------------	---------------------------

FIRE BEHAVIOUR FORECAST

Fire name: Pigeon Road				Prediction for: 0800-1800 07 Feb-19					
Prepared by: ██████████				Time and date issued: 1500 06 Feb 19					
Forecast no. 1				Day Shift					
<i>Assumptions:</i>				<i>today's forecast</i>					
Temp	RH	Wind	Slope *	FFMC	DMC	DC	ISI	BUI	FWI
17.1	59.4	10.7	0	86	98.3	463.3	4.2	128.1	19.1

Rates of spread are the equilibrium rate of spread, not the build-up phase, with continuous fuel and similar fuel type.

Fire Behaviour General:

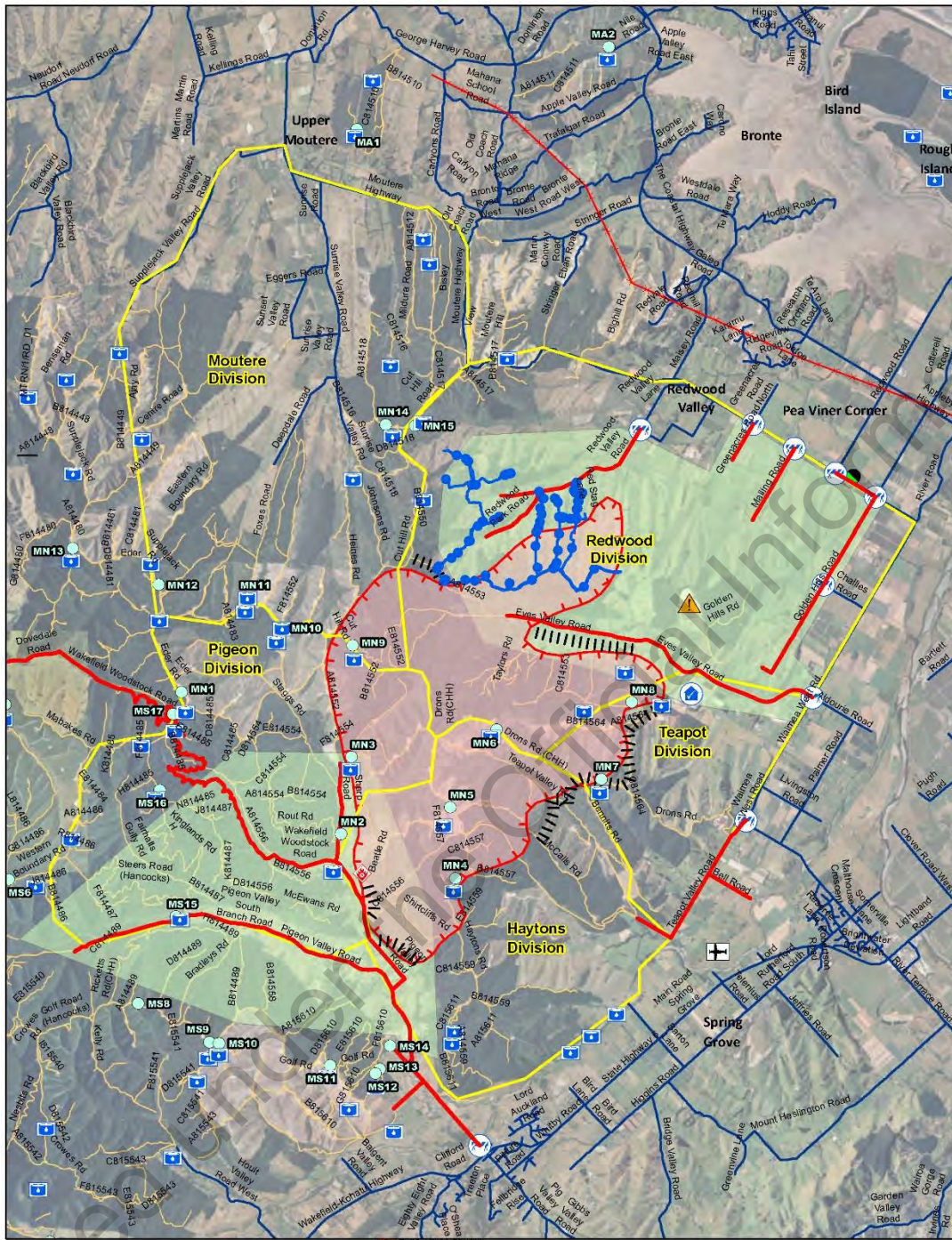
Expected fire behaviour – slope 0°	Forecast worst case – 28°C 45%RH slope 20° 1400-1800
<i>Fuel type: Mature Pine – 5m pruned</i>	<i>Fuel type: Mature Pine – 5m pruned</i>
Expect HF rate of spread of 40 m/hr HF Intensity 633 kw/m Flame lengths 1.5	Expect HF rate of spread of 200 m/hr HF Intensity 2100 kw/m Flame lengths 3 m
<i>Fuel type: Scrub/gorse 2m height</i>	<i>Fuel type: Scrub/ gorse 2m height</i>
Expect HF rate of spread of 926 m/hr HF Intensity >10000 kw/m Flame lengths 6.7 m	Expect HF rate of spread of 3000 m/hr HF Intensity >10000 kw/m Flame lengths 13 m
<i>Fuel type: Grass-70% GC, 100% cover, 0.1m height</i>	<i>Fuel type: Ungrazed Grass -70% GC, 100% cover, 0.2m height</i>
Expect HF rate of spread of 187 m/hr HF Intensity 296 kw/m Flame lengths 1.1 m	Expect HF rate of spread of 600 m/hr HF Intensity 1050 kW/m Flame lengths 2 m
Safety Considerations:	
Head Fire intensity, and flank fire intensity exceed threshold for direct attack in gorse/ scrub fuels.	Head Fire intensity exceed threshold for direct attack in gorse and mature pine fuels, and flank fires in gorse. Flank fires intensity is now too high for ground crews
. Weather conditions for Thursday are predicted to be similar to Wednesday. The NE conditions should continue to provide higher relative humidities and enable a focus on containment activity. Watch for a fall in RH as the afternoon develops and be prepared to adjust your attack strategy.	

Prepared by: ██████████	Date: 6 Feb2019	Time: 1500
--------------------------------	------------------------	-------------------

1. Pigeon Valley	2. 6 Feb2019 0700 to 1900
------------------	---------------------------

Released under the Official Information Act

Prepared by: [REDACTED]	Date:6 Feb2019	Time: 1500
-------------------------	----------------	------------



**FOR OFFICIAL USE ONLY.
NOT FOR PUBLIC DISTRIBUTION.**

Date saved: 6/02/2019, 1514 hrs
Prepared by: petei

Coordinate System: NZGD 2000 New Zealand Transverse Mercator
Projection: Transverse Mercator
Datum: NZGD 2000
Units: Meter
Sourced from Land Information New Zealand data.
Crown copyright reserved.

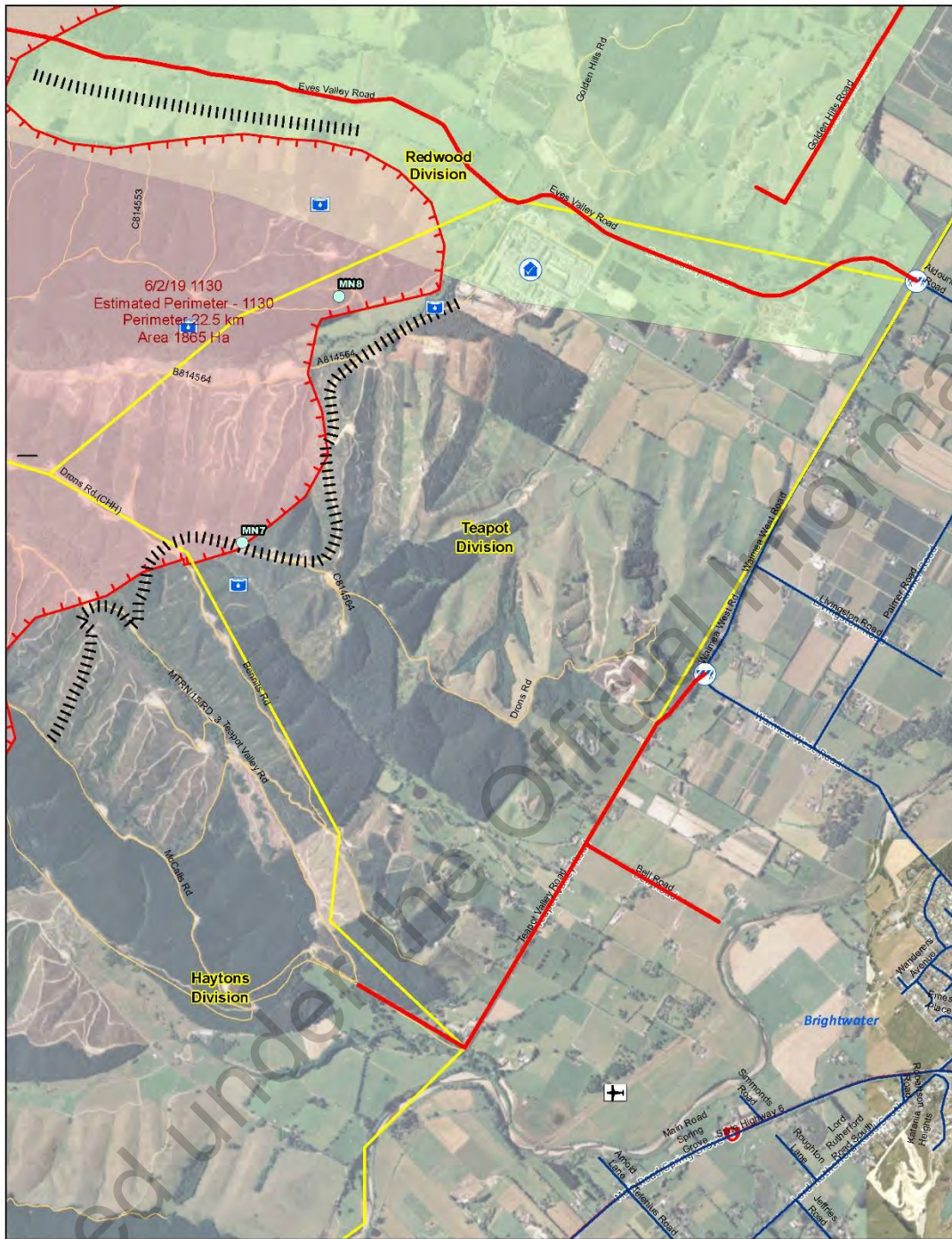
Scale at A3 1:52,511



- Eves Valley Sawmill
- Fire Origin
- Forward Control Point
- Road Block
- Fire Sectors
- Pigeon Valley Fire Extent
- Pigeon Valley Fire Extent
- EM_EventArea



Pigeon Valley Fire Overview

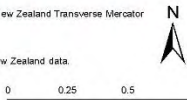


**FOR OFFICIAL USE ONLY.
NOT FOR PUBLIC DISTRIBUTION.**

Date saved: 6/02/2019, 1514 hrs
Prepared by: petei

Coordinate System: NZGD 2000 New Zealand Transverse Mercator
Projection: Transverse Mercator
Datum: NZGD 2000
Units: Meter
Sourced from Land Information New Zealand data.
Crown copyright reserved.

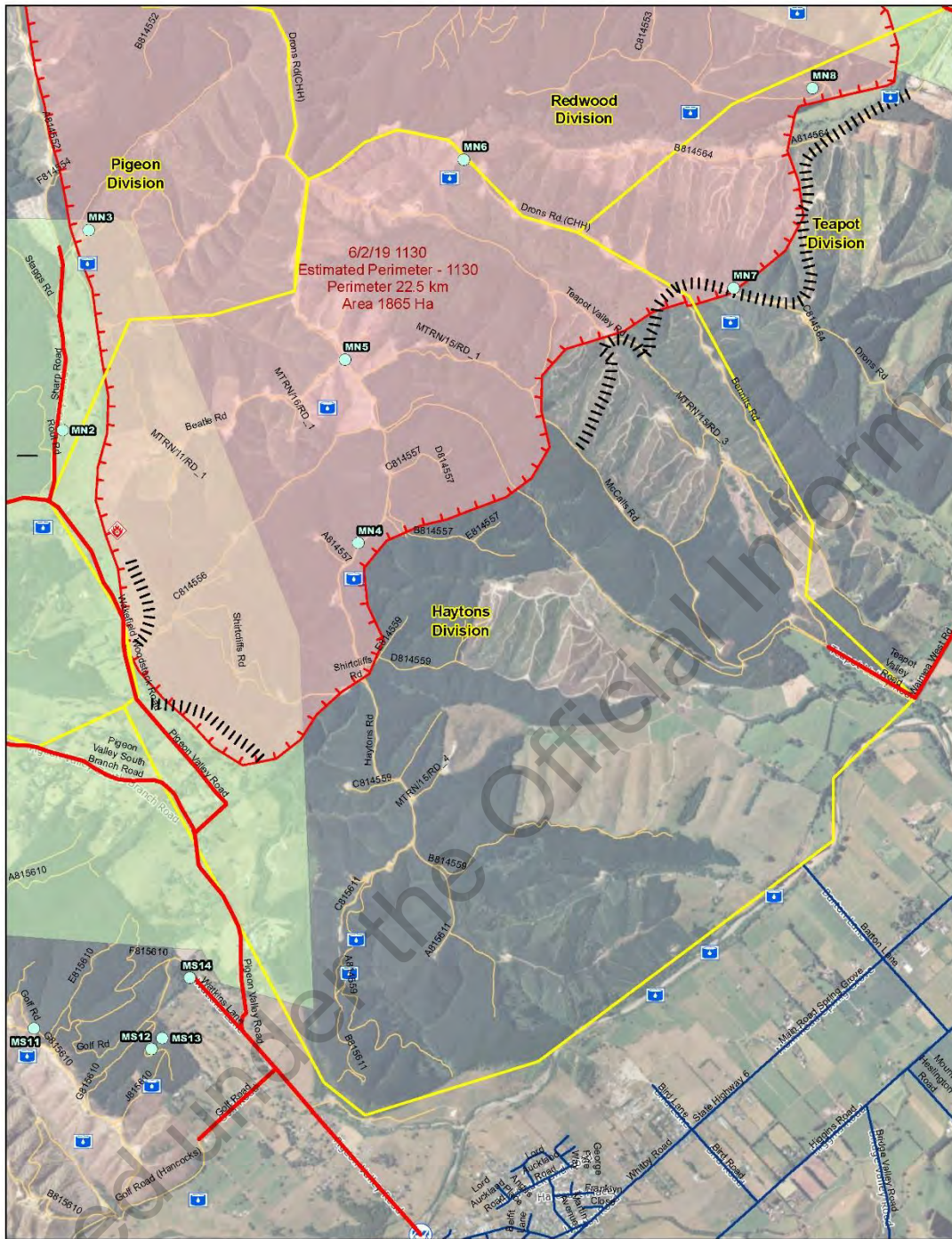
Scale at A3 1:16,492



- | Description |
|---------------------------|
| Planned Dozer Break |
| Airstrip |
| Eves Valley Sawmill |
| Road Block |
| Fire Sectors |
| Pigeon Valley Fire Extent |
| Pigeon Valley Fire Extent |
| EM_EventArea |



Pigeon Valley Fire Overview



**FOR OFFICIAL USE ONLY.
NOT FOR PUBLIC DISTRIBUTION.**

Date saved: 6/02/2019, 1514 hrs
Prepared by: petei

Coordinate System: NZGD 2000 New Zealand Transverse Mercator
Projection: Transverse Mercator
Datum: NZGD 2000
Units: Meter
Sourced from Land Information New Zealand data.
Crown copyright reserved.

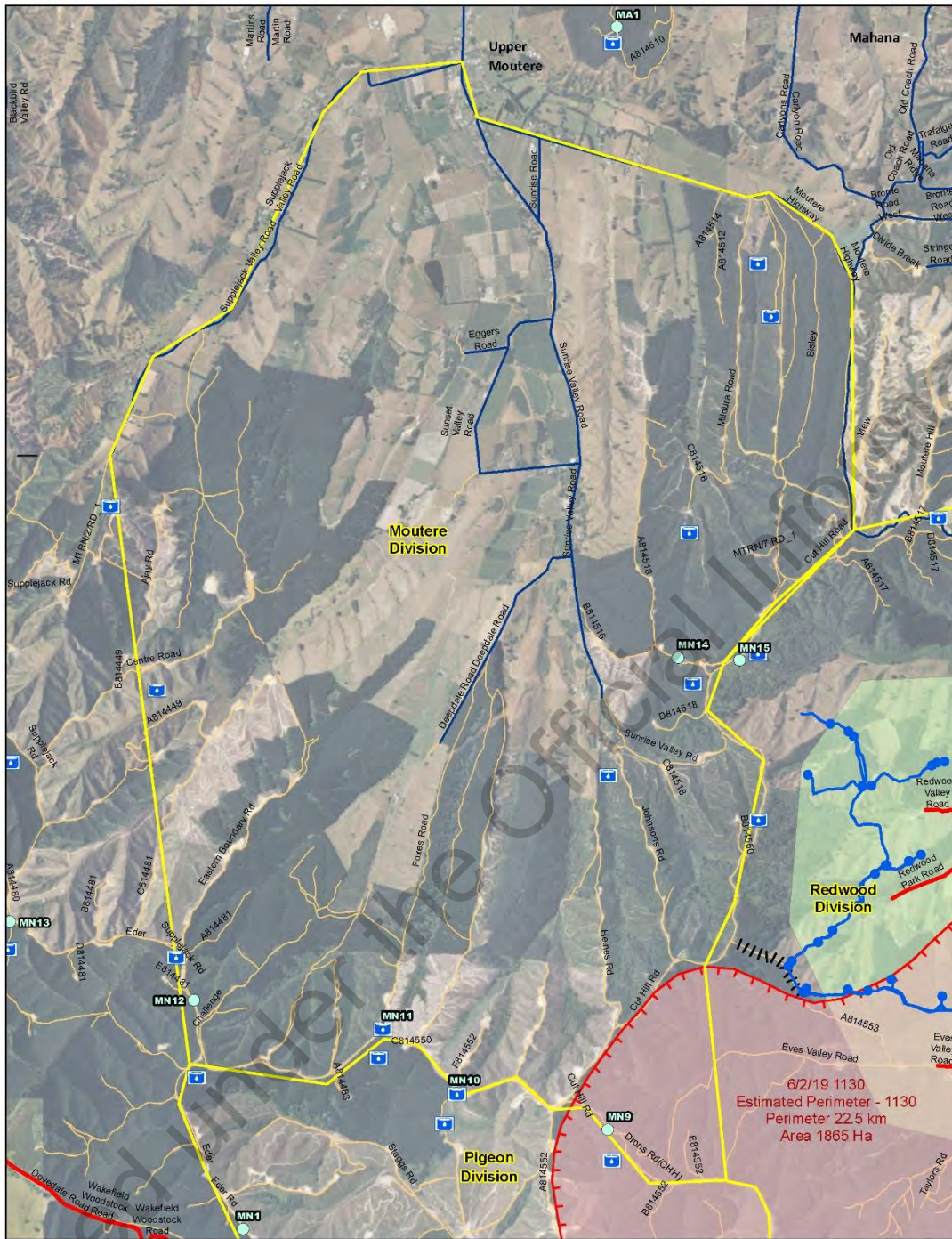
Scale at A3 1:20,323



- Description**
- Planned Dozer Break
 - Eves Valley Sawmill
 - Fire Origin
 - Road Block
 - Fire Sectors
 - Pigeon Valley Fire Extent
 - EM_EventArea



Pigeon Valley Fire Overview

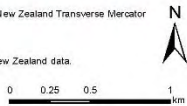


**FOR OFFICIAL USE ONLY.
NOT FOR PUBLIC DISTRIBUTION.**

Date saved: 6/02/2019, 1514 hrs
Prepared by: petei

Coordinate System: NZGD 2000 New Zealand Transverse Mercator
Projection: Transverse Mercator
Datum: NZGD 2000
Units: Meter
Sourced from Land Information New Zealand data.
Crown copyright reserved.

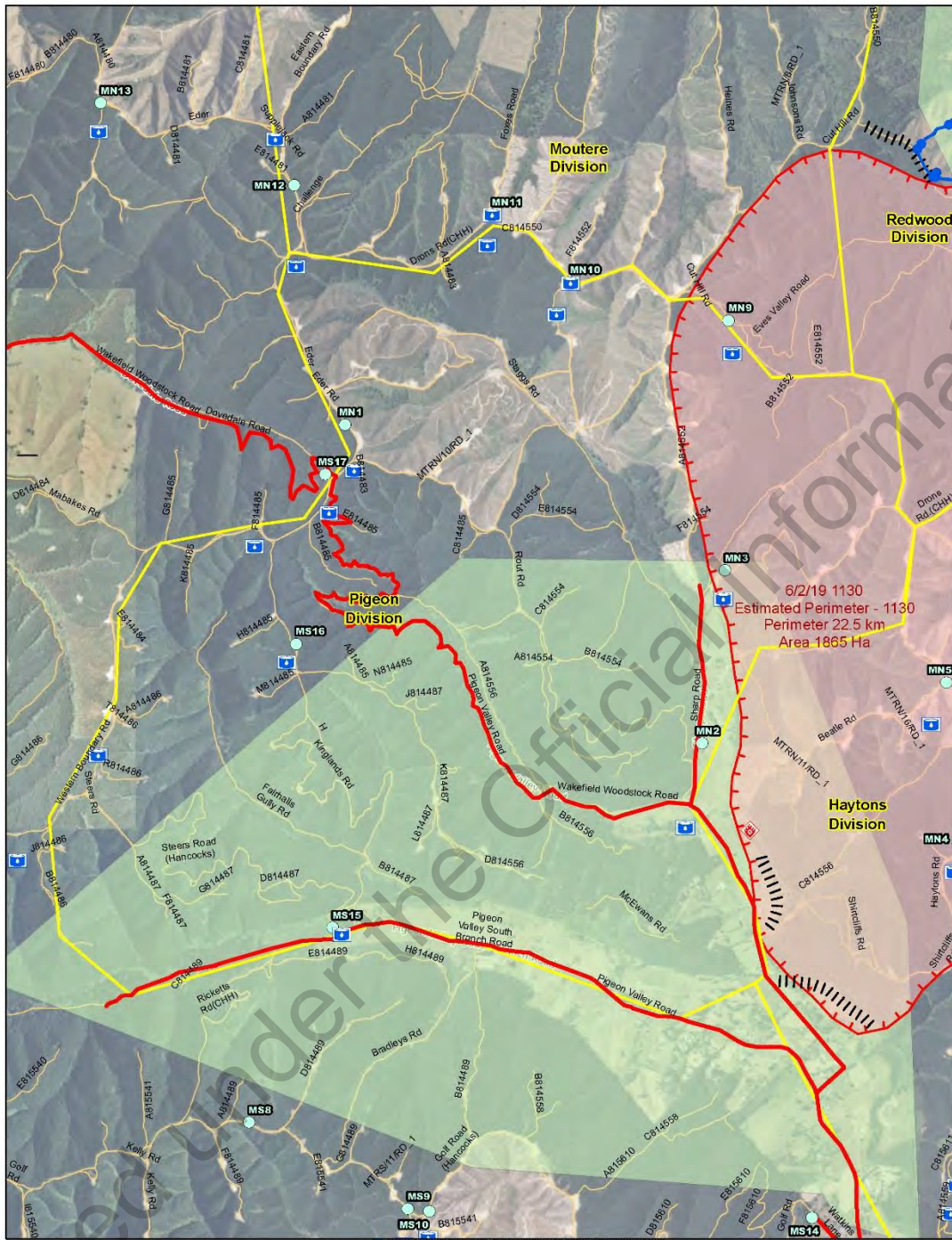
Scale at A3 1:24,625



- WaterSurfaceFeatures_RedwoodValleyPropertiesWithoutWater
- Waterpoints
- Water Locations* - Tasman Pine Data
- WaterPipes_RedwoodValleyPropertiesWithoutWater
- ClosedRoads
- Description
- Planned Dozer Break
- Power Line
- FireSectors
- Pigeon Valley Fire Extent
- Pigeon Valley Fire Extent
- EM_EventArea



Pigeon Valley Fire Overview



**FOR OFFICIAL USE ONLY.
NOT FOR PUBLIC DISTRIBUTION.**

Date saved: 6/02/2019, 1514 hrs
Prepared by: petei

Coordinate System: NZGD 2000 New Zealand Transverse Mercator
Projection: Transverse Mercator
Datum: NZGD 2000
Units: Meter
Sourced from Land Information New Zealand data.
Crown copyright reserved.

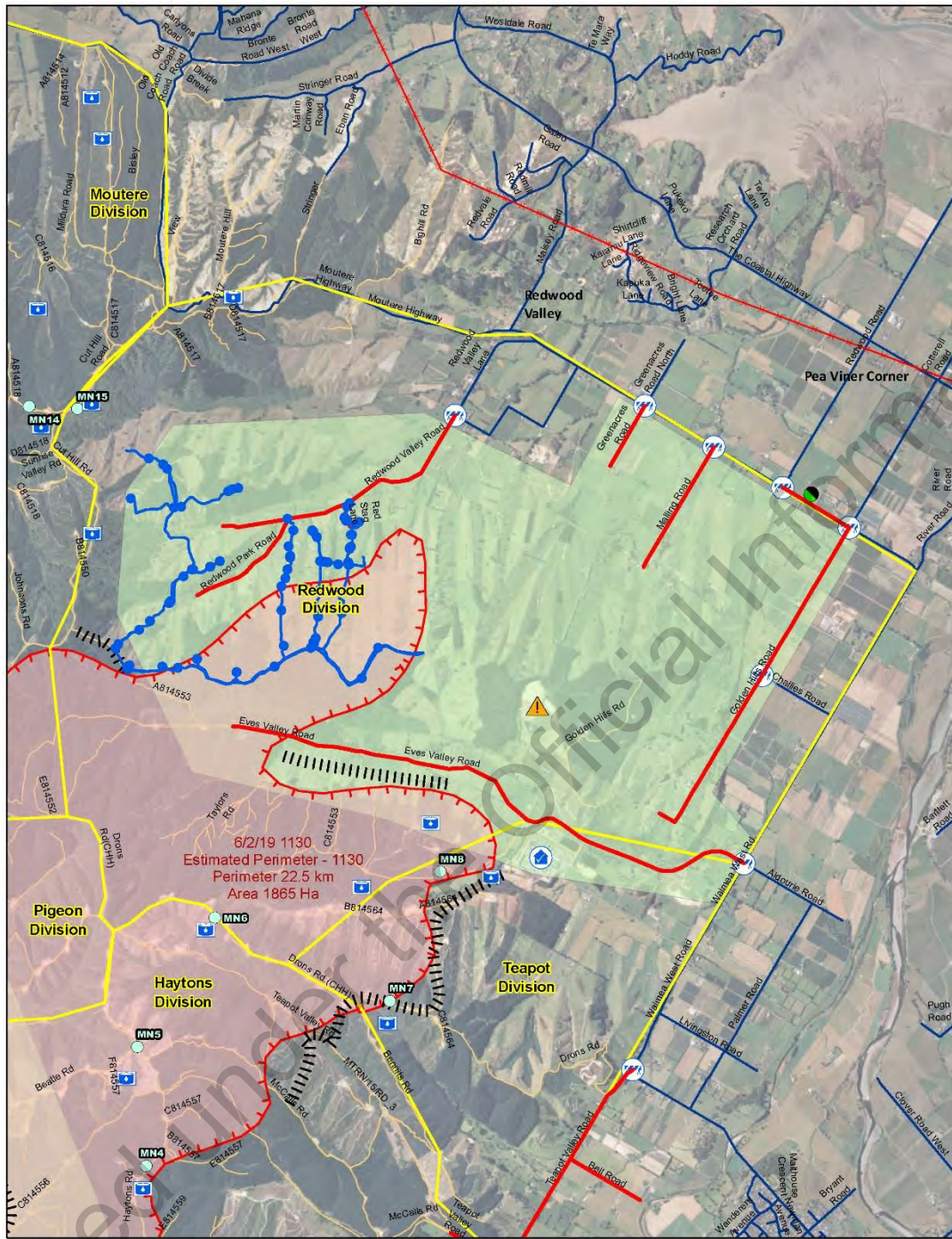
Scale at A3 1:23,459



- Waterpoints
- Water Locations* - Tasman Pine Data
- Water Pipes_RedwoodValleyPropertiesWithoutWater
- Closed Roads
- Description**
- Planned Dozer Break
- Fire Origin
- Fire Sectors
- Pigeon Valley Fire Extent
- Pigeon Valley Fire Extent
- EM_EventArea



Pigeon Valley Fire Overview



**FOR OFFICIAL USE ONLY.
NOT FOR PUBLIC DISTRIBUTION.**

Date saved: 6/02/2019, 1514 hrs
Prepared by: petei

Coordinate System: NZGD 2000 New Zealand Transverse Mercator
Projection: Transverse Mercator
Datum: NZGD 2000
Units: Meter
Sourced from Land Information New Zealand data.
Crown copyright reserved.
Scale at A3 1:31,356



- Eves Valley Landfill
- Eves Valley Sawmill
- Forward Control Point
- Road Block
- Fire Sectors
- Pigeon Valley Fire Extent
- Pigeon Valley Fire Extent
- EM_EventArea



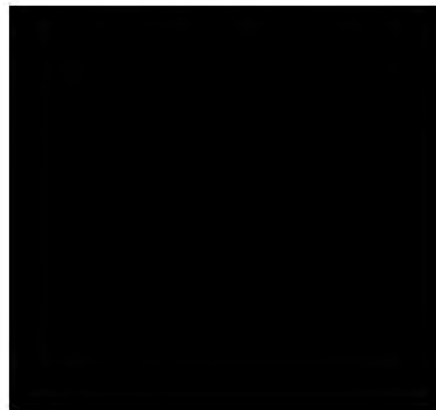
Pigeon Valley Fire Overview

Incident Name	Operational Period	IAP COVER SHEET RF199
Pigeon Valley	Date 8/2/2019 Time 0700 - 1900	

INCIDENT ACTION PLAN

The items checked below are included in the incident Action Plan

- SITUATION REPORT
- INCIDENT OBJECTIVES
- ORGANISATIONAL LIST
- SECTOR ASSIGNMENT
- DIVISIONAL ASSIGNMENT
- AIR OPERATIONS PLAN
- COMMUNICATION PLAN
- SAFETY PLAN
- MEDICAL PLAN
- FIRE MAP
- WEATHER FORECAST AND MAP
- FIRE BEHAVIOUR FORECAST
- OVERVIEW MAPS AND DOWNLOAD QR CODES
- PUBLIC INFORMATION & MEDIA



Approved by Incident Controller:	Signed	Date/Time
Name		2000 7/2/19



1. Incident Name Pigeon Valley	2. Operational Period Date 8/2/2019 Time 0700 - 1900	SITUATION REPORT RF201
3. Location Pigeon Rd, Eves Valley, Tasman	4. Vegetation Forest/Scrub/Grass/Slash/ Other:	
6. Assessment <p>A large scrub/ forest fire is currently burning estimated to be 1874ha as at 1900hrs on 7th Feb with a This afternoon we have experienced a breakout in an area where the boundary hadn't been secured. approximately 170ha of heavy fuels (pine forest). 25 residences on the boundary of this breakout have been evacuated Values at risk are life, property. Telecommunications site on the end of Cooks Rd (near Wakefield) is at risk with northerly wind. Evacuations are still in place for the following areas while operations are still active.</p> <ul style="list-style-type: none"> • Eves Valley, Golden Hills Rd, Redwood Valley Rd, Tea Pot Valley, Bartons Lane 		
7. Action taken <p>Resources deployed include 6 bull dozers, 7 excavators, 6 tankers, 15 rural appliances, 9 urban appliances, 3 Defence Force appliances and 22 Helicopters are currently working today as well as two fixed wings. A lot of this resource is now targeting the breakout area. Due to the nature of the terrain and vegetation helicopter resources are targeting this area, though control is proving difficult with the current weather conditions, extreme dryness of the forest/ scrub fuels and the resulting high fire intensity. Changes in fuel as the fire moves to pasture and to the contingency fire-breaking (on the northern end) will assist in suppressing this breakout. Black out work, machine fire breaking and hot spot targeting is continuing on the other parts of the fire ground. For night shift there will be 11 crew, 5 bull dozers, 5 excavators, 4 tankers, 3 rural appliances and 6 urban appliances. No Defence Force resources.</p>		
8. Factors, <p>Extreme fire conditions. Limited water supply. Changeable wind conditions. Wind conditions the current breakout fire is creating. Sustained 20km winds gusting to 30km/hr, warm temperatures and lower humidity.</p>		

Released under the Official Information Act

9. Predicted Incident Development

Weather conditions and fuel continuity will have a large influence on the management of the current breakout.

6pm Today – 6am Friday

Rainfall: None expected.

Sustained wind: NNE 10 km/h or less through to about 10 pm. After 10 pm, winds shift to SSW, remaining less than 10 km/h through to 6 am.

Wind gusts: Gusts up to 30 km/h possible through to about 8 pm. Thereafter, gusts overnight will remain 20 km/h or less.

Temperature: Around 19°C at 6pm, decreasing to 11-12°C by 6am Friday.

Humidity: Near 45% at 6pm, increasing to 70-75% by 6 am Friday.

Efforts to suppress the fire are continuing but proving to be challenging for helicopters due to the height of the vegetation (e.g. trees and grass) and the height of the flames. The effectiveness of our efforts will improve as the fire heads towards the flatter grassland. We are also anticipating that the wind will decrease during the night.

10. Prepared by: [REDACTED]
Authorised by [REDACTED] **(Incident Controller)**

Date/Time:
1900 7th Feb 2019

Released under the Official Information Act

1. Incident Name Pigeon Valley	2. Operational Period Date 8/2/2019 Time 0700 - 1900	INCIDENT OBJECTIVES RF202
3. Overall Incident Objectives <ol style="list-style-type: none"> 1. Ensure the safety of responders and public at all times during the incident 2. Minimise the impact on structures, infrastructure, assets and values during the incident 3. Minimise impact on environment, culture and historic values during the incident 4. Ensure communication and information, liaison with stakeholders/ community/ public/ government bodies and affected parties is timely, meets standards and requirements at all times during the incident 5. Report on costs on a daily basis by 1800 6. Return community to homes/normal life as soon as practicable 7. Investigate cause (including protect initial ignition site and evidence) 		
4. Strategies to meet objectives <ol style="list-style-type: none"> 1. Create a safety plan and safety briefing for all staff and contractors. Monitor fire behaviour and establish triggers and cordons for withdrawals and evacuation. 2. Use media, trusted community channels and stakeholders to establish communications and engagements. Establish regular briefings and updates. 3. Identify critical infrastructure, assets and values. Structures have structure protection crews and technical liaison where required. Water courses and dip sites identified with environmental protection. 4. Cultural/Historical/environmental values identified on incident ground (Actual and projected) 5. Assign fire investigation to determine cause 6. Financial reporting established and continued 7. Create a recovery plan with community and stakeholders to assist post incident. <ul style="list-style-type: none"> • Consider operation delivery to minimise impacts in support of the recovery plan. 		
5. Prepared by: ██████████	Date/Time: 1900 7/2/19	

Released under the Official Information Act

1. Incident Name	2. Operational Period Date 8/2/2019 Time 0700 - 1900	ORGANISATION ASSIGNMENT RF203	
3. Incident Control		Phone	Radio Ch
Incident Controller	[REDACTED] (NIMT)	[REDACTED]	
Deputy IC	[REDACTED] (NMIT)	[REDACTED]	
Information Officer	[REDACTED]	[REDACTED]	
Safety Officer	[REDACTED] (NMIT)	[REDACTED]	
Liaison Officer	[REDACTED]	[REDACTED]	
4. Agency Representative		Phone	Radio Ch
Lead Agency	FENZ [REDACTED] PRFO	[REDACTED]	
Agency	Police [REDACTED]	[REDACTED]	
Agency	[REDACTED]	[REDACTED]	
Agency	CDEM [REDACTED]	[REDACTED]	
Agency	CDEM Duty Phone	[REDACTED]	
Agency	FENZ Urban Liason [REDACTED]	[REDACTED]	
5. Planning/Intell Section		Phone	Radio Ch
Planning/Intell Manager	[REDACTED]	[REDACTED]	
Situations Unit	[REDACTED]	[REDACTED]	
	[REDACTED] (FBAN)	[REDACTED]	
	[REDACTED] (Observer)	[REDACTED]	
	[REDACTED] (Intel)	[REDACTED]	
	[REDACTED] (GIS)	[REDACTED]	
	[REDACTED] (GIS)	[REDACTED]	
	[REDACTED] (Observer)	[REDACTED]	
	[REDACTED] (Observer)	[REDACTED]	
Resources Unit	[REDACTED]	[REDACTED]	
	[REDACTED] (EoC)	[REDACTED]	
	[REDACTED] (Caravan	[REDACTED]	
	Check in)	[REDACTED]	
Management Support Unit	[REDACTED]	[REDACTED]	
Information Unit			
Advance Planning Unit			
Technical Specialists Unit			

Released under the Official Information Act

6. Logistics Section		Phone	Radio Ch
Logistics Manager	██████████ (NMIT)	██████████	
	██████████ (Day)		
	██████████ Night)		
Supply Unit	██████████		
Catering Unit			
Facilities Unit			
Finance Unit			
Communications Unit			
Medical Unit			

7. Operations Section		Phone	Radio Ch
Operations Manager	██████████	██████████	
Deputy Operations Manager			
Division One Commander			
Sector A Supervisor			
Sector B Supervisor			
Sector C Supervisor			
Sector D Supervisor			
Division Two Commander			
Sector E Supervisor			
Sector F Supervisor			
Sector G Supervisor			
Sector H Supervisor			
Air Division Commander	██████████ (NMIT)	██████████	
Air Attack Supervisor	██████████		
Air Support Supervisor	██████████		

8. Prepared by: ██████████ Date/Time: 1900 7/2/19

Released under the Official Information Act

1. Incident Name Pigeon Valley		2. Operational Period Date 8/2/2019 Time 0700 – 1900		DIVISION ASSIGNMENT RF204a	
3. Division Alpha		4. Description Point of ignition to Dove Saddle on Eder Rd			
5. Division Commander	Affiliation	Phone	Radio Ch		
██████████		██████████	Command: Fire Crew: Simplex		
6. Resources Assigned this Period					
<i>Sector</i>		<i>Supervisor</i>		<i>Crews</i>	
<i>Radio Ch</i>					
Bulldozer D7		TLC			
Excavator 20T		TLC			
Tasman Smoke Chaser + 3px					
Hira Smoke Chaser + 3px					
Hira 5575 +4px					
Doc Motukea 3px					
DOC Takaka 8px					
Greymouth 4px					
7. Division Assignment/Special Instructions					
<p>Ground Crews: Blacking out to 30 metres in to the forest in successive 10 metre increments along the length of the perimeter where safe to do so. Provide 2 hourly SITREP to FCP by COMMS Channel OPS2 or Mobile. Join Comms Facebook Group "Pigeon Valley – INTERNAL COMMS" and contribute imagery and video throughout day. Also view images and video collected by aerial ops during day.</p> <p>Heavy Equipment –</p> <ol style="list-style-type: none"> Widen the break from the head of Sharps Valley up the ridge to connect to Cut Hill Rd Bryants using fellerbunchers to remove large trees on the east side of Cut hill Rd (already on site). Strengthen Eder road fire break from Cuthill Rd to Route Rd and down Route Rd to North pigeon Valley Rd. <p>Helicopters: Support ground crew as required and divisional commanders to call air attack (██████████) with requirements</p>					
8. Division Communications				Phone	
Radio Ch					
Operations Manager		██████████		██████████	
Air Division Commander		██████████		██████████	
				Fire 1/Cellphone	
				Fire 4/Cellphone	
9. Prepared By: ██████████				Date/Time 1900 7/2/19	