

Released under the C

1. Incident Name Pigeon Valley Fire, Nelson	2. Operational Period 11/02/2019 – 0700 to 1900
---	---

Public Information Management Plan

Overview of PIM response

The NIMT PIM team is working to support the Nelson Tasman Civil Defence PIM team. It is essential that the information coming in from the fire ground (with regards to FENZ operations) is collated by the NIMT Situation Unit and shared to the Civil Defence IMT - this is done through the PIM teams working collaboratively and assists in timely, accurate and relevant information to all stakeholders involved.

The overall PIM team is increasing personnel numbers.

NIMT PIM team – for Sunday 10th February

- PIM FENZ Manager** – [REDACTED]
- PIM Liaison** – [REDACTED]
- Media Officer** – [REDACTED]
- PIM Support** – [REDACTED]
- Social Media Manager, Community Liaison, Evac/Alerts** – Civil Defence

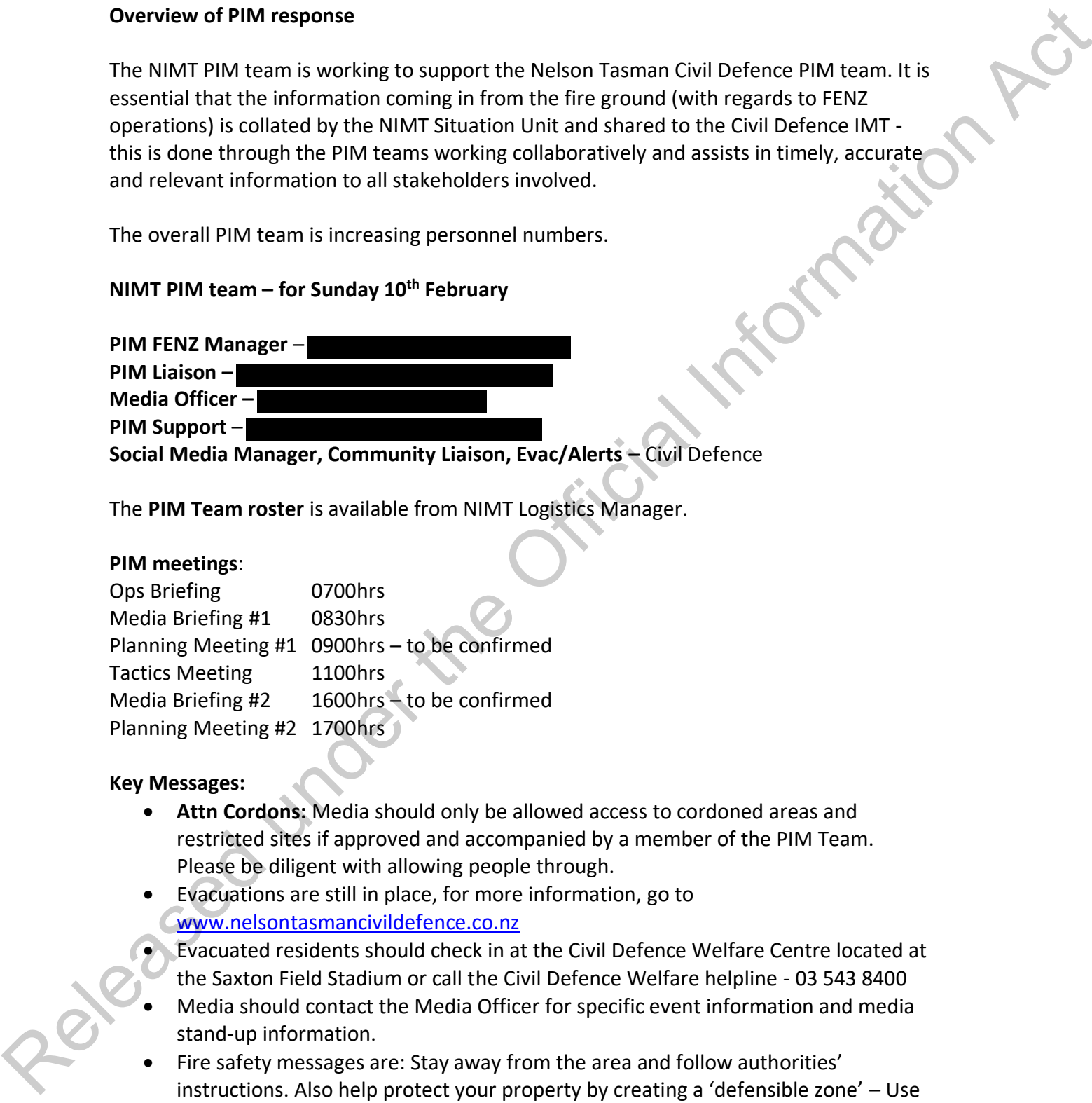
The **PIM Team roster** is available from NIMT Logistics Manager.

PIM meetings:

- Ops Briefing 0700hrs
- Media Briefing #1 0830hrs
- Planning Meeting #1 0900hrs – to be confirmed
- Tactics Meeting 1100hrs
- Media Briefing #2 1600hrs – to be confirmed
- Planning Meeting #2 1700hrs

Key Messages:

- **Attn Cordons:** Media should only be allowed access to cordoned areas and restricted sites if approved and accompanied by a member of the PIM Team. Please be diligent with allowing people through.
- Evacuations are still in place, for more information, go to www.nelsontasmancivildefence.co.nz
- Evacuated residents should check in at the Civil Defence Welfare Centre located at the Saxton Field Stadium or call the Civil Defence Welfare helpline - 03 543 8400
- Media should contact the Media Officer for specific event information and media stand-up information.
- Fire safety messages are: Stay away from the area and follow authorities' instructions. Also help protect your property by creating a 'defensible zone' – Use compost, mulch and remove any section or yard waste materials.
- Donated items should be sealed, long-life foods and drink, drop off at Nelson Tasman District Council Office.



FENZ Stakeholders and Audience Groups

Organisation	Detail	Name	Contact Info
FENZ Org (forward system to ELT, NCC, OCE and Board)	Requires regular updates – committed to 4x updates daily at 0830hrs, 1100hrs, 1500hrs and 1830hrs. Additionally a phone call every hour	RCC Christchurch	RCC R4 & R2, NCC, ██████████, ██████████, ██████████, Nelson Tasman CD Planning & Intel, NIMT Situation Unit, Comms Team
Evacuated Residents	Community Meeting – next one on Monday 11 th Feb @ 5.30pm, Appleby School.	Various	Comms through social media, Civil Defence website, welfare team and media.
Interested Public	Local community (not evacuated) and wider	Various	Social media posts, Civil Defence website, FENZ website, media outlets
Cordons	Managed by Police, kept updated via PIM team		Police Liaison in IMT
IMT and Support Staff	Information to help their roles	*See structure charts	Briefings, meetings, conversations between the teams, Sit Reps
Media Outlets	Require full-time management and contact	*See media list	

Direct message distribution	Details of the specific sites or types
Websites	Nelson Tasman Civil Defence - http://www.nelsontasmancivildefence.co.nz/ Fire and Emergency NZ www.fireandemergency.nz
Social media	Main channel is: Nelson Tasman Civil Defence facebook page Fire and Emergency NZ facebook page Tasman-Malborough Fire Area facebook page
Helpline	Welfare Helpline – 03 543 8400
Information points	Cordons (located as per map)
Community contacts/meetings	Community Meeting Monday 11 th February – details TBC.
Media message distribution	Specific stations or publications
Radio	*See media list

TV	
Newspapers	
Media	Schedule
Media briefing/conferences	Media Stand Up at 0830hrs. Media Stand Up at 1600hrs. 2 hourly Media Releases
Media site visits	
Interviews	Regular interviews with FENZ personnel
Message monitoring	
<p>Messaging is being monitored by Civil Defence PIM Team and dealt with / passed on accordingly. FENZ PIM team are supporting for Media management and FENZ / Operational information requiring to be gathered and shared.</p>	

Released under the Official Information Act

1. Incident Name Pigeon Valley Fire, Nelson	2. Operational Period 11/02/2019 – 0700 to 1900
---	---

Sector Supervisors Report (to be completed following shift)	Fire location				Signed			
	S-Supervisor name				Sector Name/Location			
	Shift Start	Date				Shift Start	Date	
		Time					Time	

Crews on your sector						
Crew Name/Company	C-Leader Name	No. Crew	Equipment used that crew supplied			
			Radios	C-saw	H-Tools	Other

Equipment used on the sector						
Pumps (hrs for each pump)	Wajax 1		hrs	Acqualite 1		hrs
	Wajax 2		hrs	Waterous 1		hrs
	Wajax 3		hrs	No Dams Used		
	Wajax 4		hrs			
Hose Lengths	25mm 4lengths=1pk		41mm 3lengths=1pk		70mm	
Suppressants	Foam		Litres		Soap Cap	

Fire Appliances Used on the sector				
Registration	Type	Driver name	Hourly Usage on site	Other Comments

Heavy Machinery Used on site				
Registration	Type	Driver name	Hourly Usage on site	Other Comments

Released under the Official Information Act

Incident Name Pigeon Valley	Operational Period	IAP COVER SHEET RF199
	Date 11&12/2/2019 Time 1900 – 0700	

Incident Name Pigeon Valley	Operational Period Date 11&12/2/2019 Time 1900 – 0700	IAP COVER SHEET RF199
--------------------------------	---	--------------------------

INCIDENT ACTION PLAN

The items checked below are included in the incident Action Plan

- SITUATION REPORT
- WEATHER & FIRE BEHAVIOUR FORECAST
- INCIDENT OBJECTIVES
- ORGANISATIONAL LIST
- SECTOR ASSIGNMENT
- DIVISIONAL ASSIGNMENT
- AIR OPERATIONS PLAN
- COMMUNICATION PLAN
- SAFETY PLAN
- MEDICAL PLAN
- FIRE MAP & DOWNLOAD QR CODES
- PUBLIC INFORMATION & MEDIA

Approved by Incident Controller: Name [REDACTED]	Signed [REDACTED]	Date/Time 1700 11/2/19 1742
---	----------------------	-----------------------------------

Deputy Incident Controller



Approved by Incident Controller: Name [REDACTED]	Signed	Date/Time 1700 11/2/19
---	--------	---------------------------



1. Incident Name Pigeon Valley	2. Operational Period Date 11/2/2019 Time 0700 - 1900	SITUATION REPORT RF201
3. Location Pigeon Rd, Eves Valley, Tasman	4. Vegetation Forest/Scrub/Grass/Slash/ Other:	
<p>Latest information as at 1500 11/2/2019:</p> <p>During Sunday evening, three drone crews were deployed initially tasked with assessing properties and assets with a view to increase the likelihood of their owners return. They completed a full perimeter survey of Pigeon Valley Fire and Atawhai Rd Fire for hot spots to provide direction to ground operations for Monday. They have also confirmed no change in perimeter or area overnight.</p> <p>Work over Monday has focused on strengthening control lines and extinguishing identified hot spots. Dangerous tree assessments are underway with initial priority on trees around structures.</p> <p>Air operations will assess the work program today, and they have confirmed to drop to 10 helicopters.</p> <p>Through Sunday night the weather eased, and we have had a recovery of RH this morning. Weather trough today has seen temps in the low to mid 20s and RH around the 50% mark. Through the week, the weather will be warm and dry with temperatures in the mid 20's and RH in the low 50's with a period tomorrow possibly in the 40%. There is a low probability of drizzle tonight, though high RH in the 90%. Over the next 14 days there is very low probability of rain exceeding 5mm.</p> <p>Current resources working on the vegetation fire (day shift) are:</p> <ul style="list-style-type: none"> - 10 helicopters, two fixed wings plane, 3 drone team - 18 vegetation crews, and 11 structure crews (151 personnel) - 15 heavy machines (excavators and dozers) + additional 2 added at 0800hrs - 47 incident management staff. <p>To nights resources will be</p> <ul style="list-style-type: none"> - drone team - 14 vegetation crews, and 11 structure crews (151 personnel) - 9 heavy machines (excavators and dozers) + additional 2 added at 0800hrs - 4 structure crews - 2 tanker crews <p>National Incident Management Team is in transition for handover, with shadowing through to 1500, whereby the new team will take control with a formal handover notification.</p> <p>Wakefield re-entry was reassessed at 4pm today. Cordons were removed and people were allowed in as of 5pm</p>		

6. Assessment

As at 1200hrs on 9 Feb, a large scrub/forest fire is currently burning, estimated to be over 2300ha with a perimeter of 25km extending primarily in the Pigeon Valley area and north western boundary.

Saturday night (09.02.19), 9.4km of the fire perimeter was surveyed by the USAR and Interpine Drone Teams. 1.9km is deemed to be contained (7.6% overall contained) and the other 7.5km was showing thermal activity within 30m of the fire perimeter.

Thursday afternoon (07.02.19), there was a breakout in an area where the fire retardant and aerial suppression wasn't effective in containing the fire. Fire spotting occurred in excess of 500m at times. Up until this morning, this breakout has burnt approximately 515ha of heavy fuels (pine forest). The fire behaviour has been mainly internal, burning throughout Friday, but extended late Sunday evening and throughout the night along an 800m section north of Haytons Rd as the fire progressed upslope. This area has continued to cause concerns of containment from late afternoon Saturday (09.02.19). Drone infrared operations will be used throughout the night to capture intelligence that will assist ground operations.

Values at risk are life, livestock and property.

Local crews and heavy machinery successfully protected nearby residential properties under very challenging fire conditions on Thursday. The fire is backed up on several structures close to the forest boundary on the south-east but is being protected by effective fire breaks which were established Thursday night. Machinery fire control lines now extend around 90% of sectors Zulu and Yankee.

Evacuation operations were conducted Friday across Wakefield, based on predicted rates of fire spread in the event another breakout occurs and a front is generated. This was jointly decided upon between Police, Civil Defence and FENZ that evacuation of the Wakefield residents, which incrementally commenced Friday afternoon. With the suppression effort, the arrival of the fire at the Evacuation trigger points was delayed, with the fire reaching this point at 0030, Sat 9 Feb at night, when favourable wind and weather conditions helped slow further progression.

A huge effort was invested in this area Saturday and continued Sunday, to allow this part of the fire to progressively burn downhill to the riverflats. To date, we have been successful in extinguishing the fire as it comes out of the pine plantation into the scrub and grassland.

A telecommunications site on the end of Cooks Rd (near Wakefield) is at risk with northerly wind. These towers have had fire retardant applied to assist in protecting them and firebreak work continues to help with this. Two contingency mobile sites have been installed near Wakefield so that the communications at Wakefield will be maintained in the event the current site becomes damaged.

The fire that started on the 8 Feb at Atawhai Road, called Walters Bluff Fire, is now under control and is being wrapped up. Overhead, helicopters and ground crew were assigned to this fire and resources deployed were 5x helicopters, 4x urban and one rural appliance. Mopping-up operations continue with two crew and a field observer on site. Extinguishment of this fire is nearing completion with a monitoring crew assigned overnight.

Rabbit Island confirmed at 3ha 650m perimeter and no longer staffed, but fire observers are monitoring. This will be flown for hotspots using infrared drones.

A controlled burning operation was carried out successfully 10/2/2019 on a section of the fire perimeter in the Xray Division to bring the burnt edge of the fire out to the fire break. This tactic is used to consume fuel which would be available to the fire if it started to run up slope due to a strong wind behind it.

Released under the Official Information Act

7. Action taken

Current resources for fire management currently working on the vegetation fire (days shift) are:

- 10 helicopters, two fixed wings plane, 1 drone team
- 18 vegetation crews, and 11 structure crews (151 personnel)
- 15 heavy machines (excavators and dozers) + additional 2 added at 0800hrs
- 47 incident management staff.

Helicopter resources continue targeting the breakout area on the southeast boundary bordering Wakefield and heavy machinery has established control lines on 95% of the boundary on sectors Zulu and Yankee. The fireline established was jumped at 0530hrs, and a secondary containment line is being constructed by fellerbunchers and heavy machinery. Ground resources in this sector are also focused on the 800m fireline of active fire intensity.

Felling machinery underway around the Eve's Valley mill, removing Euc trees and on going extinguishment of hot spots.

Machinery and fellerbunchers will continue felling larger trees, shifting logs and extending a contingency control line to enhance the fire break in anticipation of the easterly wind, which was forecasted for Sunday on the western fire boundary. Fall back lines on the western boundary have had significant strengthening with work overnight and continuing today.

Fire observers continued working throughout fire-grounds including providing helicopter observation of areas which have potential for spotting.

Black-out work, machine fire breaking and hot spot targeting has continued on other parts of the fire ground.

Thursday 7 Feb, we established a No-Fly Zone over the fire ground, this will be in place until Monday 11, 5pm. The No-Fly zone is to 3000m and 3km from the red zone.

Structure crews have been deployed to key areas around the fire and the Wakefield township to provide additional support if needed.

During Sunday evening, three drone crews were deployed initially tasked with assessing properties and assets with a view to increasing the likelihood of their owners return. They completed a full perimeter survey of Pigeon Valley Fire and Atawhai Rd Fire for hot spots to provide direction to ground operations for Monday. They have also confirmed no change in perimeter or area overnight.

Additional structure crews and appliances, plus vegetation crews and other resources to facilitate rotation of crews for fatigue management.

A fire observer has continued to monitor the Atawhai Road fire.

Dozer control lines have contained around 92% of the perimeter to a minimum width of 6m, with greater than 10m. We now have a control line extending around the fire perimeter made up of Dozer lines, roadway and river bed.

The plan for a controlled understorey burn on the Cuthill sector has been undertaken today. A media release was timed to go out at the time of ignition.

During the late afternoon Saturday, there was a significant increase in fire activity in the Zulu Div near Cooks Rd which resulted in a growth of the fire perimeters. This "slop over" was under control by dark Sunday. The area has been measured by drones overnight and amounts to 3ha.

8. Factors

Extreme fire conditions. Limited non reticulated water supply. Steep terrain. Highly flammable complex dense vegetation with shrub understorey and ladders fuels throughout. Winds will stay in the NE quarter today in the low to mid 20s by afternoon

FENZ, Civil Defence and Police engaged positively with local iwi and tangata whenua Sunday (10.02.19) with no concerns. Maori Liaison is now in place with the IMT.

Temperature and relative humidity is tracking as expected for today. Tonight, there is a chance of drizzle or at least RH in the 90% area. There is a forecast wind change to SW later tonight with winds shifting more west tomorrow.

9. Predicted Incident Development

Weather forecasts are being updated every two hours, so we always have current information.

Tonight, fire activity should ease with lower temps and RH in the 90% (possible drizzle). Winds are forecast to shift to the SW tonight and further to the west during tomorrow. Wind strengths will be in the range of 15 – 20kph with gusts in the 30s. The shift to the west will bring dryer condition for a time with temps in the higher 20s and RH in the 40s. Fire will likely increase in behaviour during this time with observations today showing active flame with RH in the 50s and Temps in the mid 20s.

Through the week, the weather will be warm and dry with temperatures in the mid 20's and RH in the low 50's later in the week. Over the next 14 days there is very low probability of rain exceeding 5mm.

10. Prepared by: [REDACTED]

Date/Time:

Authorised by [REDACTED] (Incident Controller)

1500hrs 11th Feb 2019

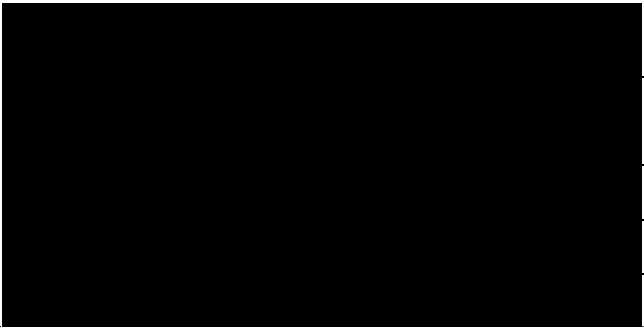

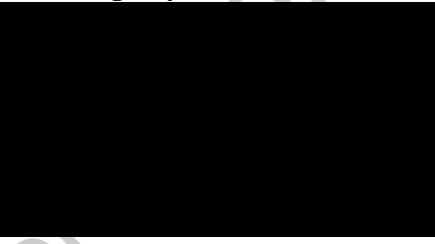

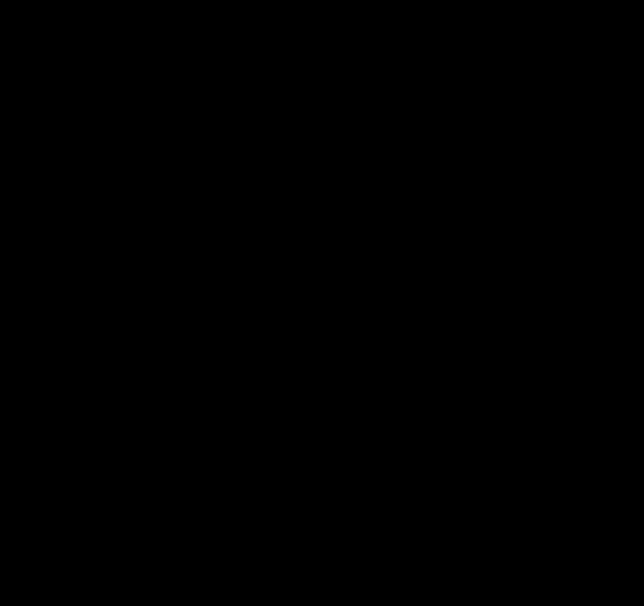
Released under the Official Information Act

1. Incident Name Pigeon Valley	2. Operational Period Date 11&12/2/2019 Time 1900 – 0700	WEATHER AND FIRE BEHAVIOUR FORECAST
--	---	--

General Weather Overview											
<p>Tonight: NE , 10 – 15 km/h with gust easing and wind gradually turning SW around 11pm 10kph or less. There is a slight chance of drizzle between 2am and 6am or at least RH will be around 90%. Early morning temps near 15C</p> <p>Tomorrow SW throughout the morning turning more westerly after 12pm. Wind in the morning 5-10kph increasing to 10-15kph during the afternoon. Wind could increase to 20 –25kph with gusts in the 30s later in the day. Temps range 14 – 26 C and RH 95% dropping to the 40s</p>											
Fire weather @ 1300hrs											
Weather Station	Temp	RH	WD	WS	Prec	FFMC	DMC	DC	ISI	BUI	FWI
Dovedale											
Feb 11 Actual	25	55	NNE	16	0	87	106	491	5.9	138	25
Feb 12 Forecast	23	60	WNW	11	0	88	110	505	5.4	143	24
General Fire Behavior											
Overnight fire behaviour will ease, increasing through the day Tuesday as the westerly brings warmer and dryer conditions.											
Specific Fire Behaviour											
Fuel Type				Forecast 1300 ROS/ Flame Height <i>(No Suppression)</i>				Peak ROS / Flame height			
Mature Pine				66 m/hr 2 m				693m/hr 6m			
Grass (GC90%,C100%)				510m/hr 1.5m				2662m/hr 4m			
Specific Activities											
Night conditions will be good for blackout and mop-up. During Tuesday morning it will be a good opportunity to make progress while fire activity is relatively low. Later in the day the warmer and dryer conditions will increase fire behaviour.											
SAFETY ADVISORY											
Wind conditions in afternoon Tuesday will cause tree windthrow danger due to damaged root plates.											
The SW wind increase later Tuesday will put pressure on the NE sectors.											

RISK MATRIX	FFMC	DMC	DC	ISI	BUI	FWI
	Ignition Potential	Mop Up Difficulty	Rate of Spread	Fuel Availability	Fire Intensity	
LOW	0+	0+	0+	0+	0+	0+
MODERATE	75+	21+	101+	5+	16+	4+
HIGH	85+	31+	176+	9+	31+	14+
VERY HIGH	88+	41+	251+	13+	46+	24+
EXTREME	92+	46+	326+	16+	61+	29+

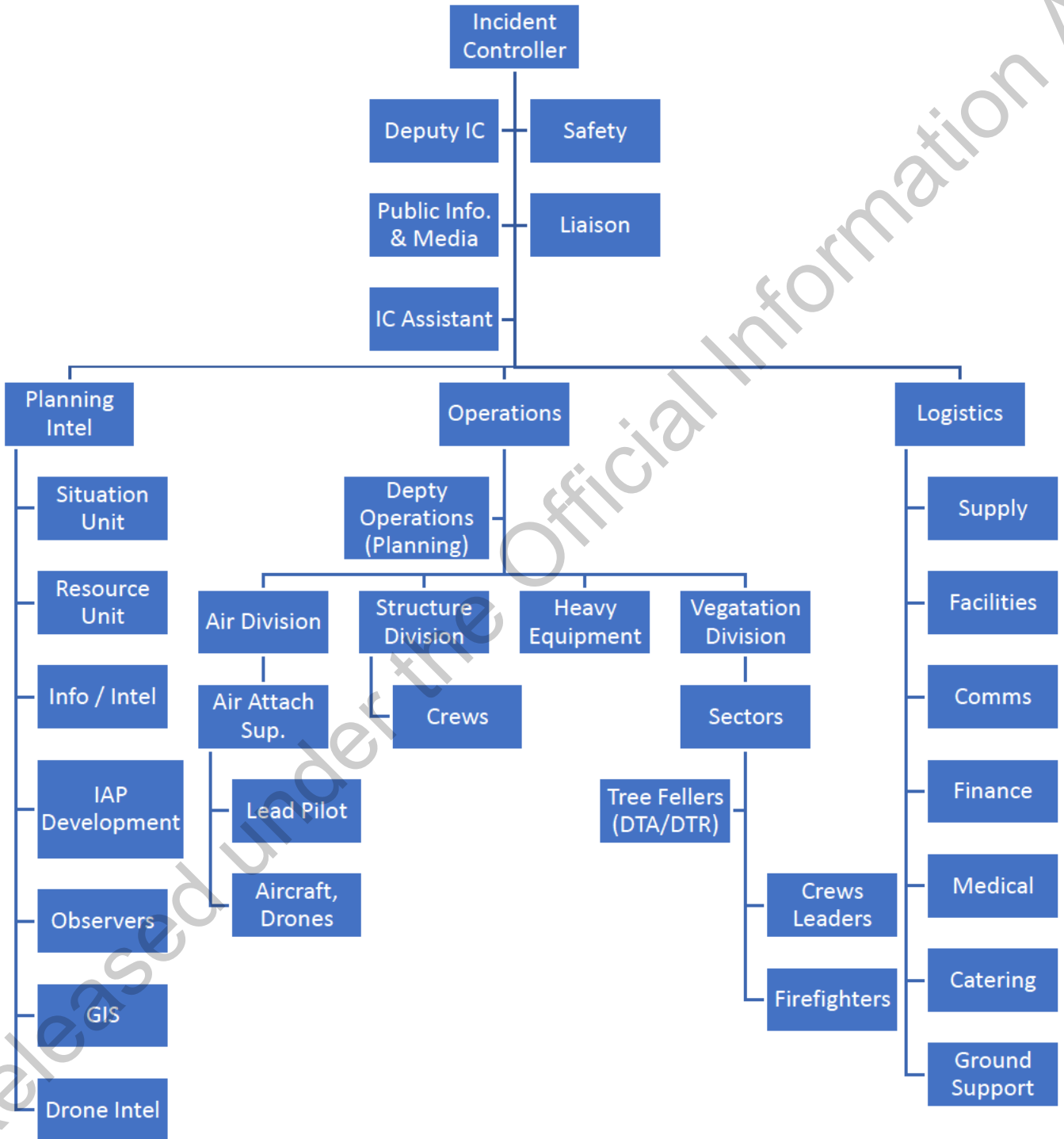
1. Incident Name Pigeon Valley	2. Operational Period Date 11&12/2/2019 Time 1900 – 0700	INCIDENT OBJECTIVES RF202
3. Overall Incident Objectives <ol style="list-style-type: none"> 1. Ensure the safety of responders and public at all times during the incident 2. Minimise the impact on structures, infrastructure, assets and values during the incident 3. Minimise impact on environment, culture and historic values during the incident 4. Ensure communication and information, liaison with stakeholders/ community/ public/ government bodies and affected parties is timely, meets standards and requirements at all times during the incident 5. Report on costs on a daily basis by 1800 6. Return community to homes/normal life as soon as practicable 7. Investigate cause (including protect initial ignition site and evidence) 		
4. Strategies to meet objectives <ol style="list-style-type: none"> 1. Create a safety plan and safety briefing for all staff and contractors. Monitor fire behaviour and establish triggers and cordons for withdrawals and evacuation. 2. Use media, trusted community channels and stakeholders to establish communications and engagements. Establish regular briefings and updates. 3. Identify critical infrastructure, assets and values. Structures have structure protection crews and technical liaison where required. Water courses and dip sites identified with environmental protection. 4. Cultural/Historical/environmental values identified on incident ground (Actual and projected) 5. Financial reporting established and continued 6. Create a recovery plan with community and stakeholders to assist post incident. <ul style="list-style-type: none"> • Consider operation delivery to minimise impacts in support of the recovery plan. 		
5. Specific operational tasks for this shift to meet objectives <ul style="list-style-type: none"> • Crew blacking out to 30m in 10m increments • Patrol, and monitor all fire edges, focusing on prescribed burn in Zulu 1 and Eder and Cuthill roads • Protection of identified structures and assets including cell phone towers, dairy farms and structures in “Drones Rd”, Teapot Valley, Pigeon Valley and Mill. • Create and strengthen firebreaks – focusing on Heines and Foxes Rd. New breaks on Golf Rd linkages” • Urban appliances tasked for structure protection Teapot Valley. • RPA/UAV/Drone hotspot and perimeter surveys. • Tree Felling around Mill • Initial Attack crew on standby 		
5. Prepared by: ██████████	Date/Time: 11/2/19 1320hrs	

1. Incident Name	2. Operational Period Date 11&12/2/2019 Time 1900 – 0700	ORGANISATION ASSIGNMENT RF203	
3. Incident Control Incident Controller Deputy IC Safety Officer			Radio Ch
4. Agency Representative - Emergency contacts Lead Agency [REDACTED] FENZ Agency Police [REDACTED] Agency [REDACTED] Agency CDEM [REDACTED] Agency CDEM Duty Phone Agency FENZ Urban Liason [REDACTED] [REDACTED]		Phone 	Radio Ch
5. Planning/Intell Section Planning/Intell Manager Situations Unit Resources Unit	- Emergency contacts 		Phone Radio Ch
6. Logistics Section Logistics Manager [REDACTED]	- Emergency contacts 		Phone Radio Ch
7. Operations Section Operations Manager Deputy Operations Manager Division Alpha Commander Division Xray Commander Division Yankee Commander Division Zulu Commander Division Atawhai Commander Air Division – Drone Air Division Commander			Phone Radio Ch

Released under Official Information Act

8. Prepared by: [REDACTED]	Date/Time: 11/2/19 1700hrs

10. INCIDENT CONTROL STRUCTURE



9. Prepared by: [REDACTED]	Date/Time: 1900 11/2/19
-----------------------------------	--------------------------------

1. Incident Name Pigeon Valley		2. Operational Period Date 11&12/2/2019 Time 1900 – 0700		DIVISION ASSIGNMENT RF204a	
3. Division Alpha		4. Description Point of ignition to Dove Saddle on Eder Rd			
5. Division Commander	<i>Affiliation</i>	<i>Phone</i>	<i>Radio Ch</i>		
██████████		██████████			
6. Resources Assigned this Period					
<i>Sector</i>	<i>Supervisor</i>	<i>Crews</i>	<i>Radio Ch</i>		
3x Excavator					
2x Dozer					
NFM 10px Crew					
Thermal Imaging crew 2px					
2 x Bulk tanker					
2 x rural appliance					
7. Division Assignment/Special Instructions					
<ul style="list-style-type: none"> A1 Patrol/protect structure. Keep mobile resources for immediate response, hotspotting as per map. A2 Blackening out control line from previous burn in area towards Xray -1 Machinery to continue widening and digging out 					
Alpha 1 - Div break to Ford on Sharps Rd					
Alpha 2 – From ford on Sharps rd to Cuthill Johnsons Rd intersection (updated Div break)					
8. Division Communications			<i>Phone</i>	<i>Radio Ch</i>	
Operations Manager	██████████		██████████		
10. Prepared By:			Date/Time 11/2/19 1900hrs		
██████████					

Released under the Official Information Act

1. Incident Name Pigeon Valley		2. Operational Period Date 11&12/2/2019 Time 1900 – 0700		DIVISION ASSIGNMENT RF204a	
3. Division Xray		4. Description Division from Cut hill Johnsons Rd to CHH saw mill			
5. Division Commander	Affiliation	Phone	Radio Ch		
6. Resources Assigned this Period					
Sector		Supervisor		Crews	
Radio Ch					
Puklowski 8px					
Packer 4px					
2x 4x4 Tankers NFL01 & Appleby					
2x Urban Appliance 291, 213					
3x Rural Appliance					
RD JD850 Dozer					
Feller Buncher					
Thermal Imaging crew 2px					
7. Division Assignment/Special Instructions					
Continue widening control line – felling machine Patrol and monitor, blackening out cut hill Rd and fire perimeter					
Xray 1 – Cuthill/Johnsons Red intersection (new Div break) to 5423000/1603000 Xray 2 - 5423000/1603000 to intersection of Redwood Valley Rd and Red Stage lane Xray 3 - Redwood Valley Rd and Red Stage lane to Yankee div break					
8. Division Communications				Phone	
Operations Manager [REDACTED]				[REDACTED]	
				Radio Ch	
11. Prepared By:				Date/Time 11/2/19 1900hrs	

Released under the Official Information Act

1. Incident Name Pigeon Valley		2. Operational Period Date 11&12/2/2019 Time 1900 – 0700		DIVISION ASSIGNMENT RF204a	
3. Division Yankee		4. Description Bennets Road to CHH saw mill at Eves Valley			
5. Division Commander	Affiliation	Phone	Radio Ch		
██████		██████████			
6. Resources Assigned this Period					
Sector		Supervisor		Crews	
5086 crew 4px					
Puklowski 4px					
Brightwater 5071 – Rural Appliance					
4x4 Tankers NFL02					
D8 Dozer					
Feller Buncher					
Thermal image crew 2px					
7. Division Assignment/Special Instructions					
Patrolling and mopping up.					
Yankee 1 – South edge of mill to div break at Zulu					
Yankee 2 – Xray div break to south edge of the mill					
8. Division Communications				Phone	
Operations Manager ██████████				██████████	
				Radio Ch	
12. Prepared By:				Date/Time 11/2/19 1900hrs	

Released under the Official Information Act

1. Incident Name Pigeon Valley		2. Operational Period Date 11&12/2/2019 Time 1900 – 0700		DIVISION ASSIGNMENT <small>RF204a</small>	
3. Division Zulu			4. Description Point of ignition to CHH saw mill		
5. Division Commander		<i>Affiliation</i>	<i>Phone</i>		<i>Radio Ch</i>
[REDACTED]			[REDACTED]		
6. Resources Assigned this Period					
<i>Sector</i>		<i>Supervisor</i>		<i>Crews</i>	<i>Radio Ch</i>
[REDACTED] Bears Smoke Chaser					
Maraharu VRRF smoke Chaser					
[REDACTED] Bears Tanker					
Urban appliance 331					
Urban appliance 441					
Rural Appliance 5075					
Thermal image crew 2px					
7. Division Assignment/Special Instructions					
Patrolling/mopping up/blackening out/hotspots					
Structure protection as required					
Zulu 1 – Alpha div break to Barton Lane Zulu 2 – Barton lane to Yankee div break.					
8. Division Communications				<i>Phone</i>	<i>Radio Ch</i>
Operations Manager [REDACTED]				[REDACTED]	
13. Prepared By: [REDACTED]				Date/Time 11/2/19 1900hrs	

Released under the Official Information Act

1. Incident Name Pigeon Valley		2. Operational Period Date 11&12/2/2019 Time 1900 – 0700		DIVISION ASSIGNMENT <small>RF204a</small>	
3. Division Atawhai		4. Description			
5. Division Commander	Affiliation	Phone		Radio Ch	
6. Resources Assigned this Period					
<i>Sector</i>		<i>Supervisor</i>		<i>Crews</i>	
<i>Radio Ch</i>					
Night					
Hira Smoke Chaser + 2px					
7. Division Assignment/Special Instructions Monitor and assess hotspots Drone flight for thermal imaging					
8. Division Communications				Phone	
Operations Manager [REDACTED]				[REDACTED]	
14. Prepared By: [REDACTED]				Date/Time 11/2/19 1900hrs	

Released under the Official Information Act

1. Incident Name Pigeon Valley		2. Operational Period Date 11&12/2/2019 Time 1900 – 0700		DIVISION ASSIGNMENT RF204a	
3. Division Structure protection		4. Description Functional division across Pigeon Valley Incident			
5. Division Commander	Affiliation	Phone	Radio Ch		
██████████		██████████			
6. Resources Assigned this Period					
<i>Sector</i>		<i>Supervisor</i>		<i>Crews</i>	
7. Division Assignment/Special Instructions					
<ul style="list-style-type: none"> • Coordinate resources and response to meet requirements of the IAP work assignments as requested from logistics • Any activities within geographical divisions must be under the direction and control of the geographical division commander • Urban division also responsible for adequate rotation and replenishment of Urban crews 					
8. Division Communications				Phone	
Operations Manager		██████████		██████████	
Air Division Commander		██████████		██████████	
				Fire 1/Cellphone	
				Fire 4/Cellphone	
15. Prepared By: ██████████				Date/Time 11/2/19 1900hrs	

Released under the Official Information Act

1. Incident Name Pigeon Valley		2. Operational Period Date 11&12/2/2019 Time 1900 – 0700		DIVISION ASSIGNMENT RF204a	
3. Division Initial Attack		4. Description Functional division across Pigeon Valley Incident			
5. Division Commander	<i>Affiliation</i>	<i>Phone</i>	<i>Radio Ch</i>		
6. Resources Assigned this Period					
<i>Sector</i>	<i>Supervisor</i>	<i>Crews</i>	<i>Radio Ch</i>		
7. Division Assignment/Special Instructions					
<ul style="list-style-type: none"> Be available at FCP for immediate response to any new breakout or urgent support required 					
8. Division Communications		<i>Phone</i>	<i>Radio Ch</i>		
Operations Manager	██████████	██████████	Fire 1/Cellphone		
Air Division Commander	██████████	██████████	Fire 4/Cellphone		
16. Prepared By: ██████████		Date/Time 11/2/19 1900hrs			

Released under the Official Information Act

1. Incident Name Pigeon Valley	2. Operational Period Date 11&12/2/2019 Time 1900 – 0700	AIR OPERATIONS PLAN RF208
--	---	-------------------------------------

3. Personnel and Communications				
Position	Name	Affiliation	Phone	Radio Chan
Air Div Commander	[REDACTED]			
Air Division – Drone				

4. Air Resource Assignments						
Pilot Name/ Company	Aircraft Type	Reg or Call sign	Assign- ment	Tactical Freq/Chan	Name	Telephone Numbers
Interpine	RPAS / UAV	PINES1		Fire 4	[REDACTED]	
Interpine	RPAS / UAV	PINES2		Fire 4		
Usar	RPAS / UAV	PINES2		Fire 4		

5. Location of Filling Points/Service Areas	
Name	Grid Reference
Heli base	-41.31777, 137.10987
Fixed wing	41 22 39.9 S 173 05 04.6 E

6. Safety Notes / Hazards / Radio Coverage Limitations

7. Air Operations Special Equip or Service
Drone operations
<ol style="list-style-type: none"> 1. Full perimeter survey of containment to 30m 2. Atawhai – Full hotspot survey and aerial map before sunset 3. Observation platform for Zulu overnight

8. Prepared By: [REDACTED]	Date/Time: 11/2/19 1900hrs
-----------------------------------	-----------------------------------

Released under the Official Information Act

1. Incident Name Pigeon Valley	2. Operational Period	COMMUNICATIONS PLAN RF205
	Date 11&12/2/2019 Time 1900 – 0700	

3. Radio Channels				
<i>Assigned To</i>	<i>Function</i>	<i>Channel</i>	<i>Frequency</i>	<i>System</i>
Command		Waimea 1	152.55000 RX 154.33125 TX	
Division Alpha	Operational	Fire 1	143.82500	
Division Zulu	Operational	Fire 2	143.78750	
Division Yankie	Operational	Fire 3	140.92500	
Division Xray	Operational	Fire 1	143.82500	
Division Bravo	Operational	Fire 2	143.78750	
Air Ops -Heli	Operational	Fire 4	140.61250	
Air Ops – Fixed Wing	Operational	Fire 10	140.98750	
Emergency		Waimea 1	152.55000 RX 154.33125 TX	
Resources		Waimea 1	152.55000 RX 154.33125 TX	
FireCom		FireCom		
2 Hourly - Sitrep		OPSR2	Use mobile if difficult coms to FCP	

4. Telephone				
<i>Assigned To</i>	<i>Landline</i>	<i>Cell phone</i>	<i>Fax</i>	<i>Comments</i>
Emergency		111		
Regional Command Centre (RCC)				

6. Other (e.g. email, Satphone, etc)		
Resources	resources@FENZNelsonIMT.com	
Safety	safety@FENZNelsonIMT.com	
Logistics	logistics@FENZNelsonIMT.com	
PIM	pim@FENZNelsonIMT.com	
Planning	planning@FENZNelsonIMT.com	
Forward Control Point (FCP)	icu.nelson@fireemergency.nz	██████████
Situation / GIS / Intel	situation@FENZNelsonIMT.com	
Operations	operations@FENZNelsonIMT.com	
Photos and imagery	Join Facebook site; Pigeon Valley Fire - INTERNAL COMMS	https://www.facebook.com/groups/1924082991035550/

6. Prepared by: ██████████	Date/Time 11/2/19 1900hrs
-----------------------------------	----------------------------------

1. Incident Name	2. Operational Period Date 11&12/2/2019	SAFETY PLAN
-------------------------	---	--------------------

Pigeon Valley	Time 1900 – 0700	RF209
---------------	------------------	-------

3. General Safety Points

Everyone is to be signed in and out of the fire ground through the Incident Control Point for both safety check and payment records (Complete DTR's).

Maintain regular situation reports especially kestrel observations (containing all relevant information) via line supervisors.

LACES	Fire Orders	Watchouts
<p>L - Lookout(s)</p> <p>A – Awareness</p> <p>– Anchor Point(s)</p> <p>C – Communication(s)</p> <p>E – Escape Route(s)</p> <p>S – Safety Zone(s)</p>	<ol style="list-style-type: none"> 1. conditions and forecasts 2. Know what your fire is doing at all times. 3. Base all actions on current and expected fire behaviour of the fire. 4. Identify escape routes and safety zones and make them known. 5. Post lookouts when there is possible danger. 6. Stay alert. Keep calm, Think clearly, act decisively. 7. Maintain prompt communication with your crew/s, your supervisor and adjoining crews. 8. Give clear instructions and ensure they are understood. 9. Maintain control of your crew/s at all times. 10. Fight fire aggressively having provided for safety first. 	<ol style="list-style-type: none"> 1. Fire size is unknown (no size up). 2. Unfamiliar territory 3. Safety zones and escape routes not identified. 4. Unfamiliar with weather and local factors influencing fire behaviour. 5. No communications link with crew members or supervisor. 6. Instructions and assignments not clear. 7. Weather is getting hotter, drier and relative humidity dropping 8. Wind increases and/or changes direction. 9. Getting frequent spot fires across the line 10. Working uphill or down wind of a fire 11. Working on a steep slope 12. Working in rugged terrain 13. Can't see main fire 14. In unburnt vegetation 15. Walking through hot ashes 16. Working alone 17. Getting tired 18. Working near power lines 19. Working near machinery 20. Working with aircraft 21. Working around trees or spars

Released under the Official Information Act

4. Specific Safety Points

- All access points into fire are controlled. Only those authorized to enter and they must receive a briefing and be logged including time and point of access
- Public access managed by cordons
- Weather fire behaviour monitored for changes and communicated to crews. Use kestrels to gather weather data. Risk identified to crews.
- All crews to have adequate food, water, PPE to manage fatigue and hydration.
- Work rest periods enforced. Seek shade during rest period.
- Ensure nine-hour rest periods before returning to fire ground.
- Crews to have identified emergency escape routes and emergency plan in the event of harm. Meeting at pre-identified evacuation point once evacuated.
- All workers to ensure they are competent for the tasks and risks given.
- Air and ground crews to be isolated from risk areas during operations.
- Potential methane flares (Division Yankee) from Eves Valley Landfill. Avoid if possible.
- Avoid skid sites where stability of surface cannot be assured.
- Particular care in smoke, work in smoke and traveling in smoke.
- Ensure operational separation from Air-ops at forward command post
- Follow carpark signage at Forward command post
- Report all incidents and near misses to safety officer.
- Be sun smart, use hats and cover completely.
- Drive carefully in the vicinity of the Brightwater community
- Ensure under garments are flame resistant
- Forestry tracks & road speed 20 km/hr. Use beacons/ lights etc. Not response speed!
- Seat belts must be worn at all times
- Big trees with root plates compromised
- Ensure safe distance from felling machines (2 tree lengths ~ 80m minimum)
- Breakfast @ 0600-0800, Lunch @ 1100 – 1300, Dinner 1800 – 2000
- Fatigue campaign fire
- Dangerous tree assessors – Ensure all crew members are competent and equipped for task (including PPE).

5. Prepared By: [REDACTED]

Date/Time 11/2/19 1900hrs

1. Incident Name Pigeon Valley		2. Operational Period Date 11&12/2/2019 Time 1900 – 0700		MEDICAL PLAN RF206				
3. First Aid Station <i>Name</i>		<i>Location</i>		<i>Phone/Radio Channel</i>		<i>Paramedics available at Station</i>		
Each Crew must have available one First aid Level 1 Certified		Each crew						
Nelson 91 Ambulance		Forward command post		Waimea 1		1 Paramedic and 1 EMT		
4. Transportation <i>Ambulance Service</i>		<i>Address</i>		<i>Phone/Radio Channel</i>		<i>Paramedics available with Ambulance</i>		
Ambulance St Johns		Closest unit		111		Yes		
5. Hospitals <i>Hospital Name</i>		<i>Address</i>		<i>Phone</i>	<i>Road</i>	<i>Travel Time</i> <i>Air</i>	<i>Burn Unit</i>	<i>Heli Pad</i>
Nelson Public Emergency		Waimea Rd.		111	27m	4min	y	y
Hutt Hospital (Burn Unit)				111	n/a	40min	Y	y
6. Special Emergency Procedures								
St John will transport patients to whichever health facility is appropriate								
7. Prepared By: [REDACTED] Shift - Manager Nelson					Date/Time 11/2/19 1900hrs			
8. Reviewed by Safety Advisor: [REDACTED]					Date/Time 11/19 1900hrs			

QR CODES FOR MAP DOWNLOAD

ct

1. Incident Name

Pigeon Valley Fire, Nelson

Date 11&12/2/2019

Time 1900 – 0700

Public Information Management Plan

Overview of PIM response

The NIMT PIM team is working to support the Nelson Tasman Civil Defence PIM team. It is essential that the information coming in from the fire ground (with regards to FENZ operations) is collated by the NIMT Situation Unit and shared to the Civil Defence IMT - this is done through the PIM teams working collaboratively and assists in timely, accurate and relevant information to all stakeholders involved.

The overall PIM team is increasing personnel numbers.

NIMT PIM team – for Monday 11th February

PIM FENZ Manager – [REDACTED]
PIM Liaison – [REDACTED]
Media Officer – [REDACTED]
PIM Support – [REDACTED]
Social Media Manager, Community Liaison, Evac/Alerts – Civil Defence

The PIM Team roster is available from NIMT Logistics Manager.

PIM meetings:

Ops Briefing	0700hrs
Media Briefing #1	0830hrs
Planning Meeting #1	0900hrs
Tactics Meeting	1100hrs
Media Briefing #2	1600hrs
Planning Meeting #2	1700hrs

Key Messages:

- **Attn Cordons:** Media should only be allowed access to cordoned areas and restricted sites **if approved** and accompanied by a member of the PIM Team. Please be diligent with allowing people through.
- Evacuations are still in place, for more information, go to www.nelontasmancivildefence.co.nz
- Evacuated residents should check in at the Civil Defence Welfare Centre located at the Saxton Field Stadium or call the Civil Defence Welfare helpline - 03 543 8400
- Media should contact the Media Officer for specific event information and media stand-up information.
- Fire safety messages are: Stay away from the area and follow authorities' instructions. Also help protect your property by creating a 'defensible zone' – Use compost, mulch and remove any section or yard waste materials. Total fire ban and machinery ban still in place.
- Donated items should be sealed, long-life foods and drink, drop off at Nelson Tasman District Council Office.

FENZ Stakeholders and Audience Groups

Organisation	Detail	Name	Contact Info
FENZ Org (forward system to ELT, NCC, OCE and Board)	Requires regular updates – committed to 4x updates daily at 0830hrs, 1100hrs, 1500hrs and 1830hrs. Additionally a phone call every hour	RCC Christchurch	RCC R4 & R2, NCC, ██████████, ██████████, ██████████ Nelson Tasman CD Planning & Intel, NIMT Situation Unit, Comms Team
Evacuated Residents	Community Meeting – next one on Monday 11 th Feb @ 5.30pm, Appleby School.	Various	Comms through social media, Civil Defence website, welfare team and media.
Interested Public	Local community (not evacuated) and wider	Various	Social media posts, Civil Defence website, FENZ website, media outlets
Cordons	Managed by Police, kept updated via PIM team		Police Liaison in IMT
IMT and Support Staff	Information to help their roles	*See structure charts	Briefings, meetings, conversations between the teams, Sit Reps
Media Outlets	Require full-time management and contact	*See media list	

Direct message distribution	Details of the specific sites or types
Websites	Nelson Tasman Civil Defence - http://www.nelontasmancivildefence.co.nz/ Fire and Emergency NZ www.fireandemergency.nz
Social media	Main channel is: Nelson Tasman Civil Defence facebook page Fire and Emergency NZ facebook page Tasman-Malborough Fire Area facebook page
Helpline	Welfare Helpline – 03 543 8400
Information points	Cordons (located as per map)
Community contacts/meetings	Community Meeting Monday 11 th February – details TBC.
Media message distribution	Specific stations or publications
Radio	*See media list
TV	
Newspapers	
Media	Schedule

Media briefing/conferences	Media Stand Up at 0830hrs. Media Stand Up at 1600hrs. 2 hourly Media Releases
Media site visits	
Interviews	Regular interviews with FENZ personnel
Message monitoring	
<p>Messaging is being monitored by Civil Defence PIM Team and dealt with / passed on accordingly. FENZ PIM team are supporting for Media management and FENZ / Operational information requiring to be gathered and shared.</p>	

Released under the Official Information Act

Sector Supervisors Report (to be completed following shift)	Fire location			Signed		
	S-Supervisor name			Sector Name/Location		
	Shift Start	Date		Shift Start	Date	
		Time			Time	

Crews on your sector

Crew Name/Company	C-Leader Name	No. Crew	Equipment used that crew supplied			
			Radios	C-saw	H-Tools	Other

Equipment used on the sector

Pumps (hrs for each pump)	Wajax 1		hrs	Acqualite 1		hrs
	Wajax 2		hrs	Waterous 1		hrs
	Wajax 3		hrs	No Dams Used		
	Wajax 4		hrs			
Hose Lengths	25mm 4lengths=1pk		41mm 3lengths=1pk		70mm	
Suppressants	Foam		Litres		Soap Cap	

Fire Appliances Used on the sector

Registration	Type	Driver name	Hourly Usage on site	Other Comments

Heavy Machinery Used on site

Registration	Type	Driver name	Hourly Usage on site	Other Comments

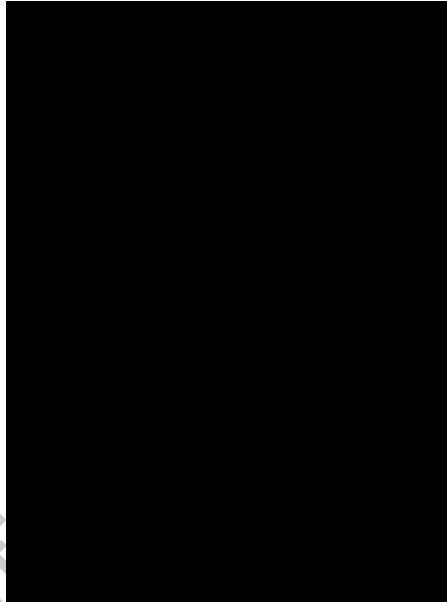
Released under the Official Information Act


Incident Name Pigeon Valley	Operational Period	IAP COVER SHEET RF199
	Date 12/2/2019 Time 0700 - 1900	

INCIDENT ACTION PLAN

The items checked below are included in the incident Action Plan

- SITUATION REPORT
- WEATHER & FIRE BEHAVIOUR FORECAST
- INCIDENT OBJECTIVES
- ORGANISATIONAL LIST
- SECTOR ASSIGNMENT
- DIVISIONAL ASSIGNMENT
- AIR OPERATIONS PLAN
- COMMUNICATION PLAN
- SAFETY PLAN
- MEDICAL PLAN
- FIRE MAP & DOWNLOAD QR CODES
- PUBLIC INFORMATION & MEDIA



Approved by Incident Controller:		Date/Time
Name		2000 11/2/19



Prescribed Burn Sector X1



1. Incident Name	2. Operational Period	SITUATION	REPORT
Pigeon Valley	Date 12/2/2019 Time 0700 - 1900		RF201
3. Location Pigeon Rd, Eves Valley, Tasman	4. Vegetation Forest/Scrub/Grass/Slash/ Other:	5. World Grid Scale 84. 41°22'32.51"S 173° 1'31.81"E	
<p>Latest information as at 1700 11/2/2019:</p> <p>Drone crews were deployed overnight Monday 11th.</p> <p>On night of Sunday 10th drone crew found a significant quantity of hotspots in Yankee sector. These hotspots are in the gully to the west of the Carter Holt Harvey Mill off Eves Valley Road. The drone crews also identified a large number of hotspots in Xray sector, particularly around X2, near the fire perimeter and in Alpha sector.</p> <p>Yesterdays (11/2/2018) shift focused on strengthening control lines and with crews extinguishing hotspots identified on Sunday evening with the three drone crews. A flare up opposite Shirtcliff in Alpha Sector has helicopters working on it. Dangerous tree assessments are underway with initial priority on trees around structures. Heavy machinery is beginning to be demoblised in Zulu sector. Crew not involved in fire suppression and response augmentation roles have been actively seeking involvement in community engagement and reassurance roles. This interaction with the communities has been well received. Ten helicopters with two aerial platforms have been working on the fire ground today.</p> <p>Temperatures over the fire ground this afternoon have been in the low to mid 20's, with a relative humidity hovering around 50% and now starting to increase. Winds have been from the NNE with the wind in the low teens, gusting in the high teens.</p> <p>A new National Incident Management Team has formally taken over the fire at 1500hrs.</p> <p>Wakefield re-entry was permitted from 1600 11/2/2018</p>			
<p>6. Assessment</p> <p>Evacuation operations were conducted Friday across Wakefield, based on predicted rates of fire spread in the event another breakout occurs and a front is generated. This was jointly decided upon between Police, Civil Defence and FENZ that evacuation of the Wakefield residents, which incrementally commenced Friday afternoon. With the suppression effort, the arrival of the fire at the Evacuation trigger points was delayed, with the fire reaching this point at 0030, Sat 9 Feb at night, when favourable wind and weather conditions helped slow further progression.</p> <p>A huge effort was invested in this area Saturday and continued Sunday, to allow this part of the fire to progressively burn downhill to the riverflats. To date, we have been successful in extinguishing the fire as it comes out of the pine plantation into the scrub and grassland.</p>			

A huge effort was invested in this area Saturday and continued Sunday, to allow this part of the fire to progressively burn downhill to the riverflats. To date, we have been successful in extinguishing the fire as it comes out of the pine plantation into the scrub and grassland.

A telecommunications site on the end of Cooks Rd (near Wakefield) is at risk with northerly wind. These towers have had fire retardant applied to assist in protecting them and firebreak work continues to help with this. Two contingency mobile sites have been installed near Wakefield so that the communications at Wakefield will be maintained in the event the current site becomes damaged.

The fire that started on the 8 Feb at Atawhai Road, called Walters Bluff Fire, is now under control and is being wrapped up. Overhead, helicopters and ground crew were assigned to this fire and resources deployed were 5x helicopters, 4x urban and one rural appliance. Mopping-up operations continue with two crew and a field observer on site. Extinguishment of this fire is nearing completion with a monitoring crew assigned overnight.

Rabbit Island confirmed at 3ha 650m perimeter and no longer staffed, but fire observers are monitoring. This will be flown for hotspots using infrared drones.

A controlled burning operation was carried out successfully Sunday 10th on a section of the fire perimeter in the Xray Division to bring the burnt edge of the fire out to the fire break. This tactic is used to consume fuel which would be available to the fire if it started to run up slope due to a strong wind behind it.

7. Action taken

Current resources for fire management currently working on the vegetation fire (days shift) are:

- 10 helicopters and 1 drone team
- 18 vegetation crews, and 11 structure crews (151 personnel)
- 15 heavy machines (excavators and dozers) + additional 2 added at 0800hrs
- 47 incident management staff.

Helicopter resources are continuing to target the breakout area on the southeast boundary bordering Wakefield and heavy machinery has established control lines on 95% of the boundary on sectors Zulu and Yankee. The fireline established was jumped at 0530hrs, and a secondary containment line is being constructed by fellerbunchers and heavy machinery. Ground resources in this sector are also focused on the 800m fireline of active fire intensity.

Felling machinery underway around the Eve's Valley mill, removing Euc trees and on going extinguishment of hot spots.

Machinery and fellerbunchers will continue felling larger trees, shifting logs and extending a contingency control line to enhance the fire break in anticipation of the easterly wind, which was forecasted for Sunday on the western fire boundary. Fall back lines on the western boundary have had significant strengthening with work overnight and continuing today.

Fire observers continued working throughout fire-grounds including providing helicopter observation of areas which have potential for spotting.

Black-out work, machine fire breaking and hot spot targeting has continued on other parts of the fire ground.

Thursday 7 Feb, we established a No-Fly Zone over the fire ground, this will be in place until Monday 11, 5pm. The No-Fly zone is to 3000m and 3km from the red zone.

Structure crews have been deployed to key areas around the fire and the Wakefield township to provide additional support if needed.

During Sunday evening, three drone crews were deployed initially tasked with assessing properties and assets with a view to increasing the likelihood of their owners return. They completed a full perimeter survey of Pigeon Valley Fire and Atawhai Rd Fire for hot spots to provide direction to ground operations for Monday. They have also confirmed no change in perimeter or area overnight.

Additional structure crews and appliances, plus vegetation crews and other resources to facilitate rotation of crews for fatigue management.

A fire observer has continued to monitor the Atawhai Road fire.

Dozer control lines have contained around 98% of the perimeter to a minimum width of 6m, with greater than 10m. We now have a control line extending around the fire perimeter made up of Dozer lines, roadway and river bed.

The plan for a controlled understorey burn on the Cuthill sector has been undertaken today. A media release was timed to go out at the time of ignition.

During the late afternoon Saturday, there was a significant increase in fire activity in the Zulu Div near Cooks Rd which resulted in a growth of the fire perimeters. This "slop over" was under control by dark Sunday. The area has been measured by drones overnight and amounts to 3ha.

8. Factors

Extreme fire conditions. Limited non reticulated water supply. Steep terrain. Highly flammable complex dense vegetation with shrub understorey and ladders fuels throughout. Winds will stye in the NE quarter today in the low to mid 20s by afternoon

FENZ, Civil Defence and Police engaged positively with local iwi and tangata whenua Sunday (10.02.19) with no concerns. Maori Liaison is now in place with the IMT.

Temperature and relative humidity is tracking as expected for today. Tonight, there is a chance of drizzle or at least RH in the 90% area. There is a forecast wind change to SW later tonight with winds shifting more west tomorrow.

9. Predicted Incident Development

Weather forecasts are being updated every two hours, so we always have current information.

Overnight fire activity would have eased with lower temps and RH in the 90% (possible drizzle). Winds are forecast to be SW today shifting further to the west during the day. Wind strengths will be in the range of 15 – 20kph with gusts in the 30s. The shift to the west will bring dryer conditions for a time with temps in the higher 20s and RH in the 40s. Fire behaviour will likely increase during this time with observations yesterday showing active flame when RH was in the 50s and temps were in the mid-20s.

SW through W winds today will put pressure on the E through NE sections of the fire perimeter, especially as the day warms up and gets dryer. The forecast increased windspeed during the afternoon will further heighten the pressure at these locations. With the warmer, dryer conditions it is likely that sub-surface hot spots will surface and show flame.

Through the week, the weather will be warm and dry with temperatures in the mid 20's and RH in the low 50's later in the week. Over the next 14 days there is very low probability of rain exceeding 5mm.

10. Prepared by: [REDACTED]

Authorised by [REDACTED] **(Incident Controller)**

Date/Time:

1700hrs 11th Feb 2019

Released under the Official Information Act

1. Incident Name Pigeon Valley	2. Operational Period Date 12/2/2019 Time 0700 - 1900	FIRE BEHAVIOUR FORECAST
--	--	--------------------------------

General Weather Overview											
<p>Tonight: NE , 10 – 15 km/h with gust easing and wind gradually turning SW around 11pm 10kph or less. There is a slight chance of drizzle between 2am and 6am or at least RH will be around 90%. Early morning temps near 15C</p> <p>Tomorrow SW throughout the morning turning more westerly after 12pm. Wind in the morning 5-10kph increasing to 10-15kph during the afternoon. Wind could increase to 20 –25kph with gusts in the 30s later in the day. Temps range 14 – 26 C and RH 95% dropping to the 40s</p>											
Fire weather @ 1300hrs											
Weather Station	Temp	RH	WD	WS	Prec	FFMC	DMC	DC	ISI	BUI	FWI
Dovedale											
Feb 11 Actual	25	55	NNE	16	0	87	106	491	5.9	138	25
Feb 12 Forecast	23	60	WNW	11	0	88	110	505	5.4	143	24
General Fire Behavior											
Overnight fire behaviour will ease, increasing through the day Tuesday as the westerly brings warmer and dryer conditions.											
Specific Fire Behaviour											
Fuel Type		Forecast 1300 ROS/ Flame Height <i>(No Suppression)</i>					Peak ROS / Flame height				
Mature Pine		66 m/hr 2 m					693m/hr 6m				
Grass (GC90%,C100%)		510m/hr 1.5m					2662m/hr 4m				
Specific Activities											
Night conditions will be good for blackout and mop-up. During Tuesday morning it will be a good opportunity to make progress while fire activity is relatively low. Later in the day the warmer and dryer conditions will increase fire behaviour.											
SAFETY ADVISORY											
Wind conditions in afternoon Tuesday will cause tree windthrow danger due to damaged root plates.											
The SW wind increase later Tuesday will put pressure on the NE sectors.											

RISK MATRIX	FFMC	DMC	DC	ISI	BUI	FWI
	Ignition Potential	Mop Up Difficulty	Rate of Spread	Fuel Availability	Fire Intensity	
LOW	0+	0+	0+	0+	0+	0+
MODERATE	75+	21+	101+	5+	16+	4+
HIGH	85+	31+	176+	9+	31+	14+
VERY HIGH	88+	41+	251+	13+	46+	24+
EXTREME	92+	46+	326+	16+	61+	29+

1. Incident Name Pigeon Valley	2. Operational Period Date 12/2/2019 Time 0700 - 1900	INCIDENT OBJECTIVES RF202
3. Overall Incident Objectives <ol style="list-style-type: none"> 1. Ensure the safety of responders and public at all times during the incident 2. Minimise the impact on structures, infrastructure, assets and values during the incident 3. Minimise impact on environment, culture and historic values during the incident 4. Ensure communication and information, liaison with stakeholders/ community/ public/ government bodies and affected parties is timely, meets standards and requirements at all times during the incident 5. Report on costs on a daily basis by 1800 6. Return community to homes/normal life as soon as practicable 7. Investigate cause (including protect initial ignition site and evidence) 		
4. Strategies to meet objectives <ol style="list-style-type: none"> 1. Create a safety plan and safety briefing for all staff and contractors. Monitor fire behaviour and establish triggers and cordons for withdrawals and evacuation. 2. Use media, trusted community channels and stakeholders to establish communications and engagements. Establish regular briefings and updates. 3. Identify critical infrastructure, assets and values. Structures have structure protection crews and technical liaison where required. Water courses and dip sites identified with environmental protection. 4. Cultural/Historical/environmental values identified on incident ground (Actual and projected) 5. Financial reporting established and continued 6. Create a recovery plan with community and stakeholders to assist post incident. <ul style="list-style-type: none"> • Consider operation delivery to minimise impacts in support of the recovery plan. 		
Specific operational tasks for this shift to meet objectives <ul style="list-style-type: none"> • Crew blacking out to 30m in 10m increments • Patrol, and monitor all fire edges, focusing on prescribed burn in Zulu 1 and Eder and Cuthill roads • Urban appliances tasked for protection of identified structures and assets including cell phone towers, dairy farms and structures in Drones Rd, Teapot Valley, Pigeon Valley and Mill. • Heavy Machinery to create and strengthen firebreaks – focusing on Heine’s and Foxes Rd. New breaks on Golf Rd linkages • Tree Felling around Mill safe to do so • Initial Attack crew on standby from FOP • Aircraft to support ground operations 		
5. Prepared by: ██████████	Date/Time: 1900 11/2/19	

1. Incident Name	2. Operational Period Date 12/2/2019 Time 0700 - 1900	ORGANISATION ASSIGNMENT RF203
-------------------------	--	---

3. Incident Control	Phone	Radio Ch
Incident Controller	[REDACTED]	
Deputy IC		
Public Information & Media		
Safety Officer		
Liaison Officer		

4. Agency Representative	Phone	Radio Ch
Lead Agency [REDACTED] FENZ	[REDACTED]	
Agency Police [REDACTED]		
Agency [REDACTED]		
Agency CDEM [REDACTED]		
Agency CDEM Duty Phone		
Agency FENZ Urban Liason [REDACTED]		

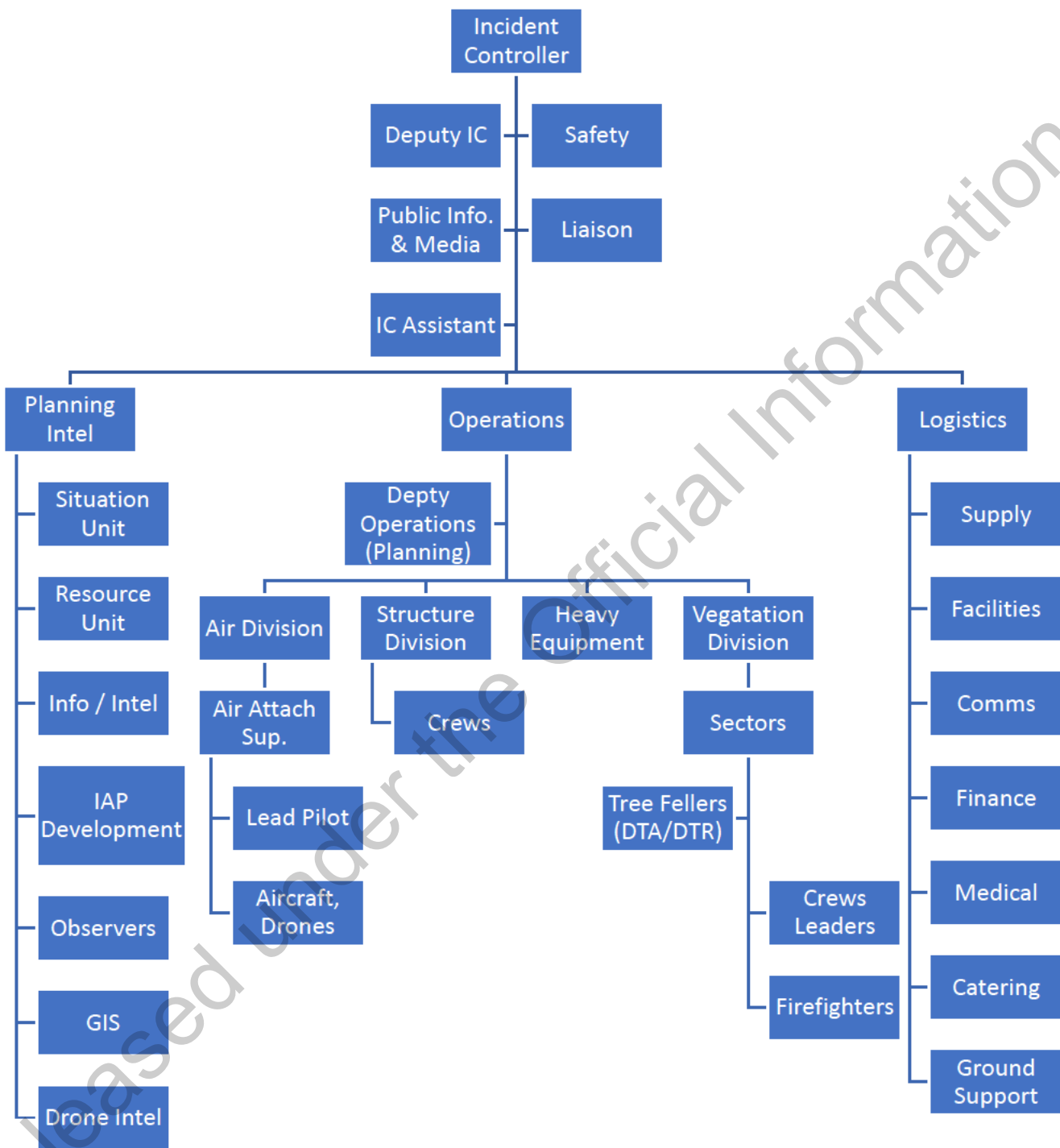
5. Planning/Intell Section	Phone	Radio Ch
Planning/Intell Manager	[REDACTED]	
Situations Unit		
Fire Behaviour		
Resources Unit		
Management Support Unit [REDACTED]		
Information Unit		
Advance Planning Unit [REDACTED]		

Released under Official Information Act

Fire investigation			
6. Logistics Section		Phone	Radio Ch
Logistics Manager	██████████ (NMIT)	██████████	
Supply Unit (24 hr)	Duty Phones	██████████	
Supply Unit	Duty Phones	██████████	
Catering Unit	Duty Phones	██████████	
Facilities Unit	Duty Phones	██████████	
	██████████		
Finance Unit			
Communications Unit			
Medical Unit			
7. Operations Section		Phone	Radio Ch
Operations Manager	██████████	██████████	
Deputy Ops Manager	██████████	██████████	
Ops planning Manager	██████████	██████████	
Division Alpha	██████████	██████████	
Division Xray	██████████	██████████	
Division Yankee	██████████	██████████	
Division Zulu	██████████	██████████	
Division Atawhai	██████████	██████████	
Division Reserve	██████████	██████████	
Air Div Commander	██████████	██████████	
Air Attack Supervisor	██████████	██████████	
	██████████	██████████	
Air Support Supervisor	██████████	██████████	
	██████████	██████████	
8. Prepared by: ██████████		Date/Time: 1900 11/2/19	

Released under Information Act

10. INCIDENT CONTROL STRUCTURE



9. Prepared by: [REDACTED] Date/Time: 1900 11/2/19

1. Incident Name Pigeon Valley		2. Operational Period Date 12/2/2019 Time 0700 - 1900		DIVISION ASSIGNMENT RF204a	
3. Division / Sector ALPHA		4. Description Point of ignition to Dove Saddle on Eder Rd			
5. Division Commander	Affiliation	Phone	Radio Ch		
██████████		██████████	Command: Fire Crew: Simplex		
6. Resources Assigned this Period					
<i>Sector</i>		<i>Supervisor</i>		<i>Crews</i>	
<i>Radio Ch</i>					
Bulldozer D7					
Excavator 20 T					
JNL + 4 PX					
Rai Silviculture 12px					
Doc South Canterbury 8px					
Tasman 2 tanker					
NZDF RFA 3px					
NZDF RFA 3px					
Dangerous Tree Assessor 2px					
A1 Blackening to 30m along perimeter Structure protection in Sharp Valley Hot spotting according to map and thermal imaging					
A2 Hotspot and blacken to achieve containment along perimeter of prescribed burn Finish Containment down to A1/A2					
<ul style="list-style-type: none"> - DTA – Assess, mark, gps and control (Eliminate or isolate) all hazardous trees with a particular focus around structures and within 60m of roads and 60m from the black edge. To work ahead of ground crews. - Helicopters to support ground crews. Division Commanders to call Air Attack on Channel VHF 4 to request 					
Alpha 1 - Div break to Ford on Sharps Rd					
Alpha 2 – From ford on Sharps rd to Cuthill Johnsons Rd intersection (updated Div break)					
8. Division Communications				Phone	
Radio Ch					
Operations Manager		██████████		██████████	
				Fire 1/Cellphone	
Air Division Commander		██████████		██████████	
				Fire 4/Cellphone	
10. Prepared By: ██████████				Date/Time 1900 11/2/19	

1. Incident Name Pigeon Valley	2. Operational Period Date 12/2/2019 Time 0700 - 1900	DIVISION ASSIGNMENT RF204a
--	--	--------------------------------------

3. Division / Sector XRAY	4. Description Division from Cut hill Johnsons Rd to CHH saw mill
--	---

5. Division Commander	Affiliation	Phone	Radio Ch
██████████		██████████	Fire 5

6. Resources Assigned this Period			
<i>Sector</i>	<i>Supervisor</i>	<i>Crews</i>	<i>Radio Ch</i>
Rai Silvi 4px			
Hawkes Bay Crew – 5px			
Tapawera 4wd Tanker 02	Hawkes Bay Crew		
716 smoke chaser	“		
D155 Dozer			
Nicholson Tanker	13,000 L		
Excavators x4			
Appleby Tanker			
NZDF RFA x7px			
Otago Crew + 5 PX			
Wainuiomata 9572 RFP 5px			
Dangerous Tree Assessor 2px			

X1 Hotspot and blacken to achieve containment along perimeter of prescribed burn
Machinery to continue widening fire breaks

X2 Hotspot and blacken to achieve containment along perimeter
Structure protection patrols

X3 Checking hotspots south of Eves Valley Rd

DTA – Assess, mark, gps and control (Eliminate or isolate) all hazardous trees with a particular focus around structures and within 60m of roads and 60m from the black edge. Include trees outside fire perimeter that may have caught embers. To work ahead of ground crews.

- **Helicopters** to support ground crews. Division Commanders to call Air Attack on Channel VHF 4 to request

Xray 1 – Cuthill/Johnsons Red intersection (new Div break) to 5423000/1603000
Xray 2 - 5423000/1603000 to intersection of Redwood Valley Rd and Red Stage lane
Xray 3 - Redwood Valley Rd and Red Stage lane to Yankee div break

8. Division Communications	Phone	Radio Ch
Operations Manager ██████████	██████████	Fire 1/Cellphone
Air Division Commander ██████████	██████████	Fire 4/Cellphone

11. Prepared By: ██████████	Date/Time 1900 11/2/19
------------------------------------	-------------------------------

1. Incident Name Pigeon Valley	2. Operational Period Date 12/2/2019
--	--

Time 0700 - 1900

**DIVISION
ASSIGNMENT**

RF204a

3. Division**Yankee****4. Description**

Bennets Road to CHH saw mill at Eves Valley

5. Division Commander**Affiliation****Phone****Radio Ch**

Bruce Forestry

Fire 3

6. Resources Assigned this Period

<i>Sector</i>	<i>Supervisor</i>	<i>Crews</i>	<i>Radio Ch</i>
2x Excavator 20T	Taylor's		
Bulldozer D8	Taylor's		
Brightwater 5026 + 4px			
Rural Tanker Downers + 1px			
Lake Rotoiti Smoke Chaser + 4 PX			
Ngatimoti 5325 Smoke Chaser +2			
Ngatimoti 5375 + 4px			
Wellington 1&2 RFA + 10 PX			
West Coast 8 PX And Smoke Chaser and Tanker			
Tapawera 4wd tanker 01			
Dangerous Tree Assessor 2px			

Y1

Blacken to achieve containment
Hotspot as per thermal imaging

Y2

Protection of the mill and surrounding structures
Significant hot spots perimeter sw of Mill
Blacken to achieve containment

Helicopters to support ground operations as required. Division Commanders to call Air attack on VHF 4 with requirements

- DTA – Assess, mark, gps and control (Eliminate or isolate) all hazardous trees with a particular focus around structures and within 60m of roads and 60m from the black edge. To work ahead of ground crews.

Yankee 1 – South edge of mill to div break at Zulu

Yankee 2 – Xray div break to south edge of the mill

8. Division Communications**Phone****Radio Ch**

Operations Manager

Fire 1/Cellphone

Air Division Commander

Fire 4/Cellphone

12. Prepared By:

Date/Time 1900 11/2/19

1. Incident Name Pigeon Valley		2. Operational Period Date 12/2/2019 Time 0700 – 1900		DIVISION ASSIGNMENT <small>RF204a</small>	
3. Division Zulu			4. Description Point of ignition to CHH saw mill		
5. Division Commander		<i>Affiliation</i>	<i>Phone</i>		<i>Radio Ch</i>
[REDACTED]		[REDACTED]	[REDACTED]		Fire 2
6. Resources Assigned this Period					
<i>Sector</i>		<i>Supervisor</i>		<i>Crews</i>	<i>Radio Ch</i>
4x Excavator 20T		TLC			
D65 Dozer		[REDACTED]			
Watertanker					
DOC Blenheim - USA 1 12px					
Doc Hauraki 5px					
Pumicelands 7px					
Ashburton 9011 4px					
Peel Forest Rural Tanker					
Timaru Smoke Chaser 1					
Timaru Smoke Chaser 2					
<p>Z1 Protection of cell tower with aircraft only Maintain mobility in this sector react to any break out (Priority area).</p> <p>Z2 Blacken perimeter into McCalls/Teapot Valley/Bennets Rd</p> <p>Helicopters to support ground operations as required. Division Commanders to call Air attack on VHF 4 with requirements</p> <p>Zulu 1 – Alpha div break to Barton Lane Zulu 2 – Barton lane to Yankee div break.</p>					
8. Division Communications			<i>Phone</i>		<i>Radio Ch</i>
Operations Manager [REDACTED]			[REDACTED]		Fire 1/Cellphone
Air Division Commander [REDACTED]			[REDACTED]		Fire 4/Cellphone
13. Prepared By: [REDACTED]			Date/Time 1900 11/2/19		

1. Incident Name Pigeon Valley		2. Operational Period Date 12/2/2019 Time 0700 – 1900		DIVISION ASSIGNMENT <small>RF204a</small>	
3. Division ATAWHAI			4. Description		
5. Division Commander		<i>Affiliation</i>	<i>Phone</i>		<i>Radio Ch</i>
[REDACTED]		FENZ	[REDACTED]		
6. Resources Assigned this Period					
<i>Sector</i>		<i>Supervisor</i>		<i>Crews</i>	<i>Radio Ch</i>
7. Division Assignment/Special Instructions					
<p>Dependent on previous nights assessment Dispatch smoke chaser for assessment/continue hot spotting if required</p>					
8. Division Communications				<i>Phone</i>	<i>Radio Ch</i>
Operations Manager		[REDACTED]		[REDACTED]	
Air Division Commander		[REDACTED]		[REDACTED]	
14. Prepared By: [REDACTED]				Date/Time 1900 11/2/2019	

Released under the Official Information Act

1. Incident Name Pigeon Valley		2. Operational Period Date 12/2/2019 Time 0700 – 1900		DIVISION ASSIGNMENT RF204a	
3. Division STRUCTURE PROTECTION		4. Description Functional division across Pigeon Valley Incident			
5. Division Commander		<i>Affiliation</i>		<i>Phone</i>	
[REDACTED]		[REDACTED]		[REDACTED]	
6. Resources Assigned this Period					
<i>Sector</i>		<i>Supervisor</i>		<i>Crews</i>	
Nelson 212 4px					
Nelson 213 4px					
Trag012 4px					
Nelson 2118 2px					
1 executive officers					
Newlands 291 4px					
Wainuiomata 441 4px					
Richmond 331 4x		Auckland 1			
7. Division Assignment/Special Instructions					
<ul style="list-style-type: none"> • Coordinate urban requirements into divisions • Urban resources deployed into divisions are to work under direction of Div sup 					
 NB Additional resources are available through firecom if required					
8. Division Communications					
Operations Manager		[REDACTED]		<i>Phone</i>	
Air Division Commander		[REDACTED]		<i>Radio Ch</i>	
				Fire 1/Cellphone	
				Fire 4/Cellphone	
15. Prepared By: [REDACTED]				Date/Time 1900 11/2/19	

1. Incident Name Pigeon Valley		2. Operational Period Date 12/2/2019 Time 0700 – 1900		DIVISION ASSIGNMENT <small>RF204a</small>																									
3. Division INITIAL ATTACK			4. Description Functional division across Pigeon Valley Incident																										
5. Division Commander		<i>Affiliation</i>	<i>Phone</i>		<i>Radio Ch</i>																								
<table border="1" style="width: 100%; border-collapse: collapse;"> <thead> <tr> <th colspan="4" style="text-align: left;">6. Resources Assigned this Period</th> </tr> <tr> <th style="width: 33%;"><i>Sector</i></th> <th style="width: 33%;"><i>Supervisor</i></th> <th style="width: 15%;"><i>Crews</i></th> <th style="width: 19%;"><i>Radio Ch</i></th> </tr> </thead> <tbody> <tr> <td>Brightwater 5071 via 111</td> <td></td> <td></td> <td></td> </tr> <tr> <td>Hira Smoke Chaser via 111</td> <td></td> <td></td> <td></td> </tr> <tr> <td>Upper Moutere VFB</td> <td></td> <td></td> <td></td> </tr> <tr> <td> </td> <td> </td> <td> </td> <td> </td> </tr> </tbody> </table>						6. Resources Assigned this Period				<i>Sector</i>	<i>Supervisor</i>	<i>Crews</i>	<i>Radio Ch</i>	Brightwater 5071 via 111				Hira Smoke Chaser via 111				Upper Moutere VFB							
6. Resources Assigned this Period																													
<i>Sector</i>	<i>Supervisor</i>	<i>Crews</i>	<i>Radio Ch</i>																										
Brightwater 5071 via 111																													
Hira Smoke Chaser via 111																													
Upper Moutere VFB																													
7. Division Assignment/Special Instructions																													
<ul style="list-style-type: none"> • Be available at FCP for immediate response to any new breakout or urgent support required. – Must have local knowledge • Smoke Chaser required 1800-2300 Neudorf Vineyard Concert 																													
8. Division Communications			<i>Phone</i>		<i>Radio Ch</i>																								
Operations Manager		██████████	██████████		Fire 1/Cellphone																								
Air Division Commander		██████████	██████████		Fire 4/Cellphone																								
16. Prepared By: ██████████			Date/Time 1900 11/2/19																										

Released under the Official Information Act

1. Incident Name Pigeon Valley		2. Operational Period Date 12/2/2019 Time 0700 - 1900		DIVISION ASSIGNMENT RF204a	
3. Division PROPERTY ASSESSMENTS		4. Description Functional division across Pigeon Valley Incident			
5. Division Commander		<i>Affiliation</i>		<i>Phone</i>	
6. Resources Assigned this Period					
<i>Sector</i>		<i>Supervisor</i>		<i>Crews</i>	
<i>Radio Ch</i>					
██████████		FENZ Liaison			
7. Division Assignment/Special Instructions					
<ol style="list-style-type: none"> 1. The property assessments are being planned and completed to ensure the safety of responders and residents during visitation and reoccupation. Fire danger risk assessments will be completed for each property, surrounding area and access routes. The risk assessments will include work on danger trees, condition of surrounding flammable fuels and built structures. These will be reviewed in relation to incident statues and predicted weather. 2. The assessments will include staff from Civil defence, FENZ and specialist contractors as required. 3. Liaison communications will be maintained with division commanders at all times when on the incident ground 4. Timeline for the assessments to be confirmed 					
8. Division Communications				<i>Phone</i>	
Operations Manager ██████████				<i>Radio Ch</i>	
Air Division Commander ██████████				Fire 1/Cellphone	
				Fire 4/Cellphone	
17. Prepared By: ██████████				Date/Time 1900 11/2/19	

1. Incident Name Pigeon Valley	2. Operational Period	Date 12/2/2019 Time 0700 - 1900	AIR OPERATIONS PLAN RF208
--	------------------------------	------------------------------------	-------------------------------------

3. Personnel and Communications			
Position	Name	Affiliation	Phone
Air Div Commander	[REDACTED]		
Air Attack Supervisor			Fire 4
Air Support Supervisor			
Lead Helicopter Pilot			
Lead Fixed-Wing Pilot			

5. Location of Filling Points/Service Areas	
Name	Grid Reference
Heli base	-41.31777, 137.10987
Fixed wing	41 22 39.9 S 173 05 04.6 E

6. Safety Notes / Hazards / Radio Coverage Limitations

- 7. Air Operations Special Equip or Service**
- Retardent filling crew (Fixed Wing) - [REDACTED]
 - Bryant Earthworks - [REDACTED]
 - 2x dip trucks
 - 1x dip truck and trailer
 - 5x support tankers

8. Prepared By: [REDACTED] **Date/Time:** 1900 11/2/19

Released under the Official Information Act

Company Name	Aircraft Type	Rego/Call Sign	Pilots Name	Bucket Size	Contact Number	Availability
Rotary						
Helicharter	500D	HXX	[REDACTED]	500L	[REDACTED]	Available
Garden City Heli	B3	IHL		1100L		Available
	BK	IVB		1100L		Available
Reid Heli	B2	HPE		900L		Available
	FX2	HEX		1000L		Available DS [REDACTED]
	B2	IOR		Platform		Available
	B2	HAA		1000L		Available
Southern Heli Lift	UH-1L	HUE		1500L		
Marlborough Heli	Long Ranger	HTA		650L		Available
Skyworks	B3	HWW		1050L		Available
Anderson	B2	HKA		1000L		Available
Murchison Heli	BA	ILW		680L/Platform		Available
Drone						
Interpine 2px	RPRS/UAV	PINES1	[REDACTED]		[REDACTED]	
Interpine 2px	RPRS/UAV	PINES2				
USAR 3px	RPRS/UAV	Romeo1				
USAR 3px	RPRS/UAV	Romeo2				

Released under the Official Information Act

1. Incident Name Pigeon Valley		2. Operational Period Date 12/2/2019 Time 0700 - 1900		COMMUNICATIONS PLAN RF205	
3. Radio Channels					
<i>Assigned To</i>	<i>Function</i>	<i>Channel</i>	<i>Frequency</i>	<i>System</i>	
Command		Waimea 1	152.55000 RX 154.33125 TX		
Division Alpha	Operational	Fire 1	143.82500		
Division Zulu	Operational	Fire 2	143.78750		
Division Yankee	Operational	Fire 3	140.92500		
Division Xray	Operational	Fire 1	143.82500		
Air Ops -Heli	Operational	Fire 4	140.61250		
Air Ops – Fixed Wing	Operational	Fire 10	140.98750		
Emergency		Waimea 1	152.55000 RX 154.33125 TX		
Resources		Waimea 1	152.55000 RX 154.33125 TX		
FireCom		FireCom			
2 Hourly - Sitrep		OPSR2	Use mobile if difficult coms to FCP		
4. Telephone					
<i>Assigned To</i>	<i>Landline</i>	<i>Cell phone</i>	<i>Fax</i>	<i>Comments</i>	
Emergency		111			
Regional Command Centre (RCC)					
6. Other (e.g. email, Satphone, etc)					
Resources	resources@FENZNelsonIMT.com				
Safety	safety@FENZNelsonIMT.com				
Logistics	logistics@FENZNelsonIMT.com				
PIM	pim@FENZNelsonIMT.com				
Planning	planning@FENZNelsonIMT.com				
Forward Control Point (FCP)	icu.nelson@fireemergency.nz [REDACTED]				
Situation / GIS / Intel	situation@FENZNelsonIMT.com				
Operations	operations@FENZNelsonIMT.com				
Photos and imagery	Join Facebook site; Pigeon Valley Fire - INTERNAL COMMS			https://www.facebook.com/groups/1924082991035550/	
6. Prepared by: [REDACTED]				Date/Time 1900 11/2/19	

1. Incident Name Pigeon Valley	2. Operational Period Date 12/2/2019 Time 0700 - 1900	SAFETY PLAN RF209
--	--	-----------------------------

3. General Safety Points

Everyone is to be signed in and out of the fire ground through the Incident Control Point for both safety check and payment records (Complete DTR's).

Maintain regular situation reports especially kestrel observations (containing all relevant information) via line supervisors.

LACES	Fire Orders	Watchouts
L - Lookout(s) A - Awareness - Anchor Point(s) C - Communication(s) E - Escape Route(s) S - Safety Zone(s)	<ol style="list-style-type: none"> 1. conditions and forecasts 2. Know what your fire is doing at all times. 3. Base all actions on current and expected fire behaviour of the fire. 4. Identify escape routes and safety zones and make them known. 5. Post lookouts when there is possible danger. 6. Stay alert. Keep calm, Think clearly, act decisively. 7. Maintain prompt communication with your crew/s, your supervisor and adjoining crews. 8. Give clear instructions and ensure they are understood. 9. Maintain control of your crew/s at all times. 10. Fight fire aggressively having provided for safety first. 	<ol style="list-style-type: none"> 1. Fire size is unknown (no size up). 2. Unfamiliar territory 3. Safety zones and escape routes not identified. 4. Unfamiliar with weather and local factors influencing fire behaviour. 5. No communications link with crew members or supervisor. 6. Instructions and assignments not clear. 7. Weather is getting hotter, drier and relative humidity dropping 8. Wind increases and/or changes direction. 9. Getting frequent spot fires across the line 10. Working uphill or down wind of a fire 11. Working on a steep slope 12. Working in rugged terrain 13. Can't see main fire 14. In unburnt vegetation 15. Walking through hot ashes 16. Working alone 17. Getting tired 18. Working near power lines 19. Working near machinery 20. Working with aircraft 21. Working around trees or spars

Released under the Official Information Act

4. Specific Safety Points

- All access points into fire are controlled. Only those authorized to enter and they must receive a briefing and be logged including time and point of access
- Public access managed by cordons
- Weather fire behaviour monitored for changes and communicated to crews. Use kestrels to gather weather data. Risk identified to crews.
- All crews to have adequate food, water, PPE to manage fatigue and hydration.
- Work rest periods enforced. Seek shade during rest period.
- Ensure nine-hour rest periods before returning to fire ground.
- Crews to have identified emergency escape routes and emergency plan in the event of harm. Meeting at pre-identified evacuation point once evacuated.
- All workers to ensure they are competent for the tasks and risks given.
- Air and ground crews to be isolated from risk areas during operations.
- Potential methane flares (Division Yankee) from Eves Valley Landfill. Avoid if possible.
- Avoid skid sites where stability of surface cannot be assured.
- Particular care in smoke, work in smoke and traveling in smoke.
- Ensure operational separation from Air-ops at forward command post
- Follow carpark signage at Forward command post
- Report all incidents and near misses to safety officer.
- Be sun smart, use hats and cover completely.
- Drive carefully in the vicinity of the Brightwater community
- Ensure under garments are flame resistant
- Forestry tracks & road speed 20 km/hr. Use beacons/ lights etc. Not response speed!
- Seat belts must be worn at all times
- Big trees with root plates compromised
- Ensure safe distance from felling machines (2 tree lengths ~ 80m minimum)
- Breakfast @ 0600-0800, Lunch @ 1100 – 1300, Dinner 1800 – 2000
- Fatigue campaign fire
- Dangerous tree assessors – Ensure all crew members are competent and equipped for task (including PPE).

5. Prepared By: [REDACTED]

Date/Time 1900 11/2/19

1. Incident Name Pigeon Valley	2. Operational Period Date 12/2/2019 Time 0700 - 1900	MEDICAL PLAN RF206
--	--	------------------------------

3. First Aid Station Name	Location	Phone/Radio Channel	Paramedics available at Station
Each Crew must have available one First aid Level 1 Certified	Each crew		
Nelson 91 Ambulance	Forward command post	Waimea 1	1 Paramedic and 1 EMT

4. Transportation Ambulance Service	Address	Phone/Radio Channel	Paramedics available with Ambulance
Ambulance St Johns	Closest unit	111	Yes

5. Hospitals Hospital Name	Address	Phone	Road	Travel Time		Burn Unit	Heli Pad
				Air			
Nelson Public Emergency	Waimea Rd.	111	27m	4min		y	y
Hutt Hospital (Burn Unit)		111	n/a	40min		Y	y

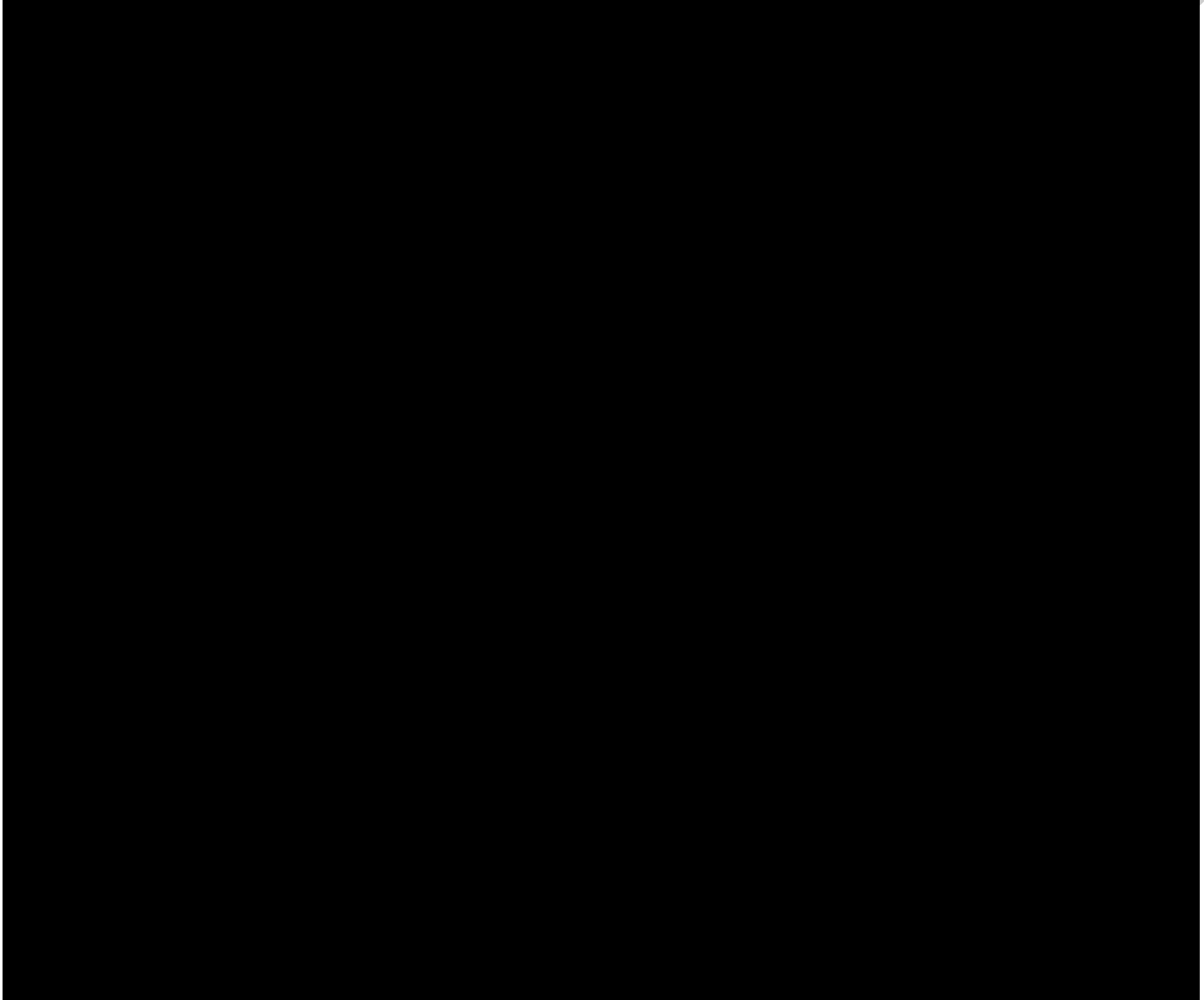
6. Special Emergency Procedures

St John will transport patients to whichever health facility is appropriate

7. Prepared By: [REDACTED] Shift - Manager Nelson	Date/Time 1900 11/2/19
--	-------------------------------

1. Incident Name Pigeon Valley	2. Operational Period Date 12/2/2019 Time 0700 - 1900	MAPS RF
3. Download Avenza Maps app on iOS and Android, Scan the Following Codes to Access Digital Maps you can navigate with. These codes generally do no change, therefore to get tomorrow's map you can scan the old map code. Present a smartphone camera to see these codes or scan using QR code reader app.		

QR CODES FOR MAP DOWNLOAD



Act

Released

1. Incident Name Pigeon Valley Fire, Nelson	2. Operational Period 12/02/2019 – 0700 to 1900
---	---

FENZ Stakeholders and Audience Groups

Organisation	Detail	Name	Contact Info
FENZ Org (forward system to ELT, NCC, OCE and Board)	Requires regular updates – committed to 4x updates daily at 0830hrs, 1100hrs, 1500hrs and 1830hrs. Additionally a phone call every hour	RCC Christchurch	RCC R4 & R2, NCC, ██████████, ██████████, ██████████ ██████████ Nelson Tasman CD Planning & Intel, NIMT Situation Unit, Comms Team
Evacuated Residents	Community Meeting – next one on Monday 11 th Feb @ 5.30pm, Appleby School.	Various	Comms through social media, Civil Defence website, welfare team and media.
Interested Public	Local community (not evacuated) and wider	Various	Social media posts, Civil Defence website, FENZ website, media outlets
Cordons	Managed by Police, kept updated via PIM team		Police Liaison in IMT
IMT and Support Staff	Information to help their roles	*See structure charts	Briefings, meetings, conversations between the teams, Sit Reps
Media Outlets	Require full-time management and contact	*See media list	

Direct message distribution	Details of the specific sites or types
Websites	Nelson Tasman Civil Defence - http://www.nelontasmancivildefence.co.nz/ Fire and Emergency NZ www.fireandemergency.nz
Social media	Main channel is: Nelson Tasman Civil Defence facebook page Fire and Emergency NZ facebook page Tasman-Malborough Fire Area facebook page
Helpline	Welfare Helpline – 03 543 8400
Information points	Cordons (located as per map)
Community contacts/meetings	Community Meeting Monday 11 th February – details TBC.
Media message distribution	Specific stations or publications
Radio	*See media list

TV	
Newspapers	
Media	Schedule
Media briefing/conferences	Media Stand Up at 0830hrs. Media Stand Up at 1600hrs. 2 hourly Media Releases
Media site visits	
Interviews	Regular interviews with FENZ personnel
Message monitoring	
<p>Messaging is being monitored by Civil Defence PIM Team and dealt with / passed on accordingly. FENZ PIM team are supporting for Media management and FENZ / Operational information requiring to be gathered and shared.</p>	

Released under the Official Information Act

Incident Name Pigeon Valley	Operational Period	IAP COVER SHEET RF199
	Date 12&13/2/2019 Time 1900 – 0700	

Incident Name Pigeon Valley	Operational Period Date 12&13/2/2019 Time 1900 – 0700	IAP COVER SHEET RF199
---------------------------------------	--	---------------------------------

INCIDENT ACTION PLAN

The items checked below are included in the incident Action Plan

- SITUATION REPORT
- WEATHER & FIRE BEHAVIOUR FORECAST
- INCIDENT OBJECTIVES
- ORGANISATIONAL LIST
- SECTOR ASSIGNMENT
- DIVISIONAL ASSIGNMENT
- AIR OPERATIONS PLAN
- COMMUNICATION PLAN
- SAFETY PLAN
- MEDICAL PLAN
- FIRE MAP & DOWNLOAD QR CODES
- PUBLIC INFORMATION & MEDIA



Approved by Incident Controller: Name [Redacted]	Signed [Redacted]	Date/Time 1800 12/2/19
--	-----------------------------	----------------------------------



Approved by Incident Controller: Name [Redacted]	Signed	Date/Time 1800 12/2/19
--	---------------	----------------------------------



1. Incident Name Pigeon Valley	2. Operational Period Date 12/2/2019 Time 1400 - 1900	SITUATION REPORT RF201
3. Location Pigeon Rd, Eves Valley, Tasman	4. Vegetation Forest/Scrub/Grass/Slash/ Other:	5. World Grid Scale 84. 41°22'32.51"S 173° 1'31.81"E

Released under the Official Information Act

Latest information as at **1400** 12/2/2019:

A firefighter has been transported to hospital by St John Ambulance with dehydration. St John Ambulance have advised that firefighters should be drinking electrolyte drinks rather than energy drinks. The Safety Advisor has notified crews to drink electrolyte drinks.

A new National Incident Management Team formally took over the fire at 1500hrs on 11th of February.

Re-entry for residents in the Wakefield area was approved yesterday (Monday 11/02/2019) by Civil Defence Emergency Management and facilitation of Wakefield residents back into their property has been undertaken by Police and NZDF.

Four drone teams were deployed onto the fire ground last night. The entire perimeter of Pigeon Valley Fire and Atawhai Fire were surveyed. A large quantity of hotspots were identified in Sector X-Ray and Yankee. A smaller number of hotspots have been located in Sector Alpha and Zulu.

As the cloud cover has decreased over the past week, we have managed to get more accurate measurements of the fire ground due to digitally enhanced satellite images. This means that the latest data shows the Pigeon valley Fire is about 2,400 ha, with a perimeter of 33.5 km. This latest data shows that although the fire perimeter is larger than initially estimated, there is a small decrease in overall hectares burnt. (Note: Fire edge is now more defined and maps have been updated to reflect this.) Please note, that as we work to get more accurate images and data that this information will be subject to change.

The fire that started on the 8 Feb at Atawhai Road, called Walters Bluff Fire, is now under control. However, a number of hotspots have been identified overnight.

Note : State of emergency extended to 20th Feb.

Division X-Ray - Working on known hotspots, and cold trailing around the properties.

Division Yankee – Dangerous tree assessments are continuing in this area by assessors. Crews continuing to work multiple hotspots within the Division.

Division Alpha – Crews are continuing to blackout and extinguish hotspots.

Division Zulu - Crews are continuing to blackout and extinguish hotspots.

Atawhai Fire – Crews are extinguishing hotspots that were identified on Monday night (12/02/2019).

Dangerous trees are being identified and marked with flagging tape and GPS location marked. These dangerous trees have been passed on to Operations for actioning.

Rabbit Island confirmed at 3ha 650m perimeter and no longer staffed, but fire observers are monitoring. This will be flown for hotspots using infrared drones.

Tuesday 12 Feb - 0700-01900 day resourcing will be:

- 16 four person and one 5 person vegetation crews.

- 9 Smoke chasers
- 4 4x4 Tankers
- 6 Bulk water tanker
- 8 Rural appliances
- 8 Excavators
- 5 Dozers
- 1 Feller buncher
- 4 Division Supervisors
- 16 Tree Assessors
- 2 Urban crews
- 9 Helicopters
- 3 Drone Crews

Tuesday 12 Feb - 1900-0700 - night resources will be:

- 8 crews four person crews
- 3 smoke chasers
- 4 4*4 Tankers
- 3 bulk water tankers
- 9 rural appliances
- 5 Excavators
- 2 Dozers
- 2 feller buncher's
- 4 Division supervisors

Released under the Official Information Act

6. Assessment

As at 0800hrs on 12 Feb, a large scrub/forest fire is currently burning, estimated to be over 2400ha with a perimeter of 33.5km extending primarily in the Pigeon Valley area and north western boundary.

Values at risk are life, livestock and property.

Local crews and heavy machinery successfully protected nearby residential properties under very challenging fire conditions on Thursday. The fire is backed up on several structures close to the forest boundary on the south-east but is being protected by effective fire breaks which were established Thursday night. Machinery fire control lines now extend around 90% of sectors Zulu and Yankee.

Evacuation operations were conducted Friday across Wakefield, based on predicted rates of fire spread in the event another breakout occurs and a front is generated. This was jointly decided upon between Police, Civil Defence and FENZ that evacuation of the Wakefield residents, which incrementally commenced Friday afternoon. With the suppression effort, the arrival of the fire at the Evacuation trigger points was delayed, with the fire reaching this point at 0030, Sat 9 Feb at night, when favourable wind and weather conditions helped slow further progression.

A huge effort was invested in this area Saturday and Sunday, to allow this part of the fire to progressively burn downhill to the riverflats. To date, we have been successful in extinguishing the fire as it comes out of the pine plantation into the scrub and grassland.

A telecommunications site on the end of Cooks Rd (near Wakefield) is at risk with northerly wind. These towers have had fire retardant applied to assist in protecting them and firebreak work continues to help with this. Two contingency mobile sites have been installed near Wakefield so that the communications at Wakefield will be maintained in the event the current site becomes damaged.

The fire that started on the 8 Feb at Atawhai Road, called Walters Bluff Fire, is now under control operations continue with two crew and a field observer on site. Extinguishment of this fire is nearing completion with a monitoring crew assigned overnight.

A controlled burning operation was carried out successfully on Sunday on a section of the fire perimeter in the Xray Division to bring the burnt edge of the fire out to the fire break. This tactic is used to consume fuel which would be available to the fire if it started to run up slope due to a strong wind behind it.

7. Action taken

Machinery and feller/bunchers will continue felling larger trees, shifting logs and extending a contingency control line to enhance the fire break in anticipation of the easterly wind, which was forecasted for Sunday on the western fire boundary. Fall back lines on the western boundary have had significant strengthening with work overnight and continuing today.

Fire observers continued working throughout fire-grounds including providing helicopter observation of areas which have potential for spotting.

Black-out work, machine fire breaking and hot spot targeting has continued on other parts of the fire ground.

Thursday 7 Feb, we established a restricted air space over the fire ground and it has been extended out to Sat 16th 5pm. The No-Fly zone is to 3000m and 3km from the red zone.

Structure crews have been deployed to key areas around the fire and the Wakefield township to provide additional support if needed.

Additional structure crews and appliances, plus vegetation crews and other resources to facilitate rotation of crews for fatigue management.

Dozer control lines have contained around 92% of the perimeter to a minimum width of 6m, with greater than 10m. We now have a control line extending around the fire perimeter made up of Dozer lines, roadway and river bed.

2 crews currently observing the fire in the field. 3 crews from tomorrow will be observing and verifying hot spots in the field.

Look to increase crew resources for blacking out operations. 10 m 1st then work through to 20 and 30

8. Factors

Extreme fire conditions. Limited non reticulated water supply. Steep terrain. Highly flammable complex dense vegetation with shrub understorey and ladders fuels throughout. Winds will be in southwest through to west

FENZ, Civil Defence and Police engaged positively with local iwi and tangata whenua Sunday (10.02.19) with no concerns. Maori Liaison is now in place with the IMT.

Temperature and relative humidity is tracking as expected for today with 1.4mm of rain recorded overnight at Nelson.

9. Predicted Incident Development

Weather forecast 12th Feb for Pigeon valley

Forecast for Pigeon Valley area

Updated forecast for the Pigeon Valley area. 12:30

11 am – 6 pm Tuesday

Rainfall: None expected.

Sustained wind: WSW becoming WNW by 2:00 pm and increasing to 10-15 km/h. Increasing further to 15-20 km/h after 6:00 pm.

Wind gusts: From 12:00-4:00 pm gusts of up to 40-45 km/h are expected. From 4:00 pm onward there is a risk of gusts up to around 50 km/h. Higher gusts of up to 55 km/h are possible over the highest terrain in the fire area.

Temperature: Currently 20°C, increasing to a maximum near 25°C at 4:00 pm.

Humidity: Near 65% currently, decreasing to an afternoon minimum of 45-50%.

Winds are forecast to be SW today shifting further to WNW during the day. Wind strengths will be in the range of 15 – 20kph with gusts in the 30s. The shift to the west will bring dryer conditions for a time with temps in the higher 20s and RH in the 40s. Fire behaviour will likely increase during this time with observations yesterday showing active flame when RH was in the 50s and temps were in the mid-20s.

The forecast increased windspeed during the afternoon will further heighten the danger of unstable trees caused by root plates being burnt.

Wednesday (13th): Sunny and warm. High temps mid-20s. Lowest RH in the 40s. Southwest wind 20 km/h gusts 30 km/h through to about midday. Changes northeast 15 km/h around midday, rises to 25 km/h gusting 35 km/h afternoon hours. Winds become light easterly in evening. No rain.

Thursday (14th): Southwest wind 10 km/h early hours, then northeast wind kicks in around 10:30 am (around 15 km/h), rises to 25 km/h gusts 35 km/h for afternoon hours. Winds ease off again evening. Top temps mid-20s, and lowest RH about 50%. No rain.

10. Prepared by: [REDACTED]

Authorised by [REDACTED] (Incident Controller)

Date/Time:

1400hrs 12th Feb 2019

1. Incident Name Pigeon Valley	2. Operational Period Date 11&12/2/2019 Time 1900 – 0700	WEATHER AND FIRE BEHAVIOUR FORECAST
--	---	--

General Weather Overview

Tonight: NE , 10 – 15 km/h with gust easing and wind gradually turning SW around 11pm 10kph or less. There is a slight chance of drizzle between 2am and 6am or at least RH will be around 90%. Early morning temps near 15C

Tomorrow SW throughout the morning turning more westerly after 12pm. Wind in the morning 5-10kph increasing to 10-15kph during the afternoon. Wind could increase to 20 –25kph with gusts in the 30s later in the day. Temps range 14 – 26 C and RH 95% dropping to the 40s

Fire weather @ 1300hrs

Weather Station	Temp	RH	WD	WS	Prec	FFMC	DMC	DC	ISI	BUI	FWI
Dovedale											
Feb 11 Actual	25	55	NNE	16	0	87	106	491	5.9	138	25
Feb 12 Forecast	23	60	WNW	11	0	88	110	505	5.4	143	24

General Fire Behavior

Overnight fire behaviour will ease, increasing through the day Tuesday as the westerly brings warmer and dryer conditions.

Specific Fire Behaviour

Fuel Type	Forecast 1300 ROS/ Flame Height <i>(No Suppression)</i>	Peak ROS / Flame height
Mature Pine	66 m/hr 2 m	693m/hr 6m
Grass (GC90%,C100%)	510m/hr 1.5m	2662m/hr 4m

Specific Activities

Night conditions will be good for blackout and mop-up. During Tuesday morning it will be a good opportunity to make progress while fire activity is relatively low. Later in the day the warmer and dryer conditions will increase fire behaviour.

SAFETY ADVISORY

Wind conditions in afternoon Tuesday will cause tree windthrow danger due to damaged root plates.

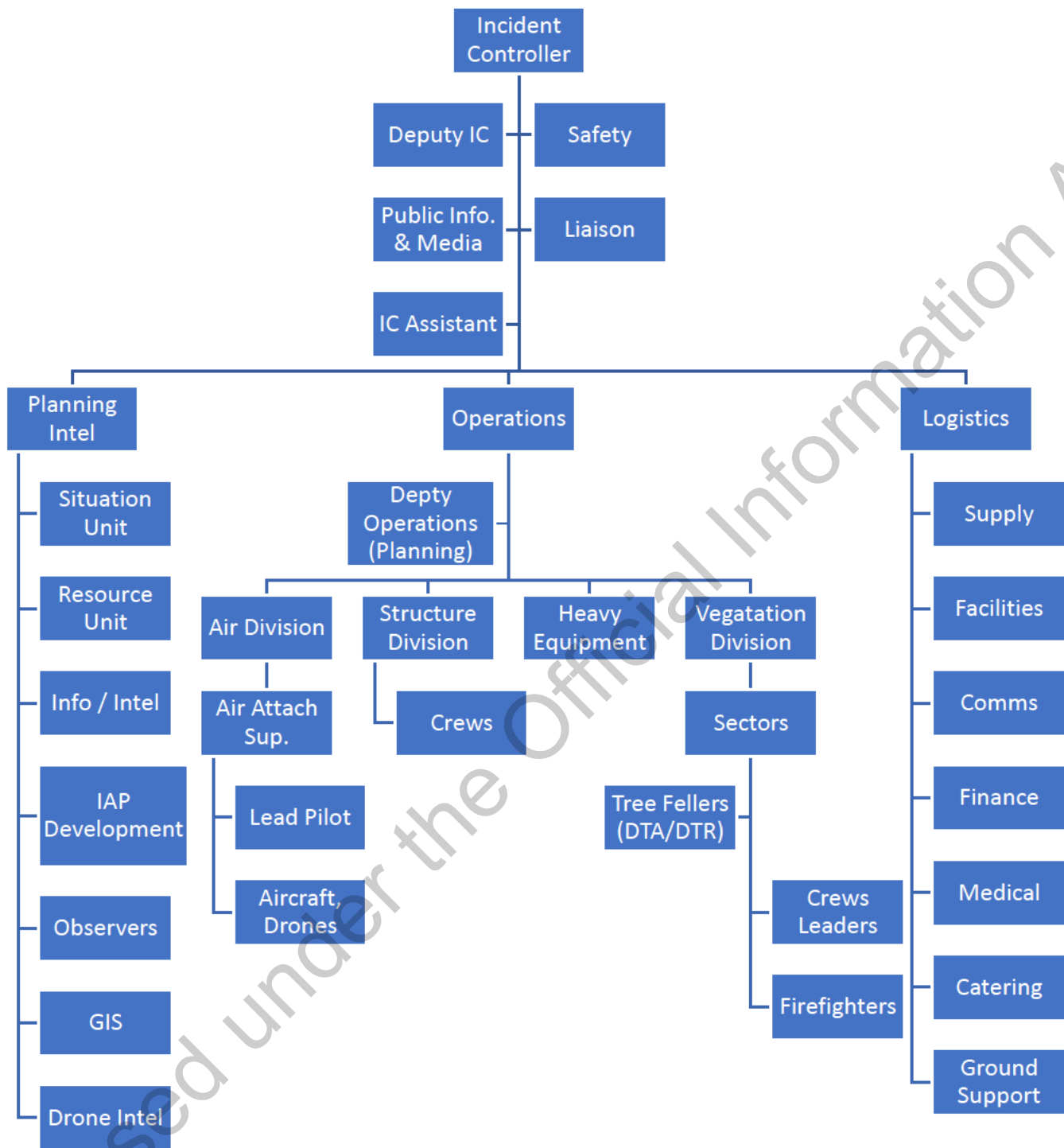
The SW wind increase later Tuesday will put pressure on the NE sectors.

RISK MATRIX	FFMC	DMC	DC	ISI	BUI	FWI
	Ignition Potential	Mop Up Difficulty	Rate of Spread	Fuel Availability	Fire Intensity	
LOW	0+	0+	0+	0+	0+	0+
MODERATE	75+	21+	101+	5+	16+	4+
HIGH	85+	31+	176+	9+	31+	14+
VERY HIGH	88+	41+	251+	13+	46+	24+
EXTREME	92+	46+	326+	16+	61+	29+

1. Incident Name Pigeon Valley	2. Operational Period Date 12&13/2/2019 Time 1900 – 0700	INCIDENT OBJECTIVES RF202
3. Overall Incident Objectives <ol style="list-style-type: none"> 1. Ensure the safety of responders and public at all times during the incident 2. Minimise the impact on structures, infrastructure, assets and values during the incident 3. Minimise impact on environment, culture and historic values during the incident 4. Ensure communication and information, liaison with stakeholders/ community/ public/ government bodies and affected parties is timely, meets standards and requirements at all times during the incident 5. Report on costs on a daily basis by 1800 6. Return community to homes/normal life as soon as practicable 		
4. Strategies to meet objectives <ol style="list-style-type: none"> 1. Create a safety plan and safety briefing for all staff and contractors. Monitor fire behaviour and establish triggers and cordons for withdrawals and evacuation. 2. Use media, trusted community channels and stakeholders to establish communications and engagements. Establish regular briefings and updates. 3. Identify critical infrastructure, assets and values. Structures have structure protection crews and technical liaison where required. Water courses and dip sites identified with environmental protection. 4. Cultural/Historical/environmental values identified on incident ground (Actual and projected) 5. Financial reporting established and continued 6. Create a recovery plan with community and stakeholders to assist post incident. <ul style="list-style-type: none"> • Consider operation delivery to minimise impacts in support of the recovery plan. 		
5. Specific operational tasks for this shift to meet objectives <ul style="list-style-type: none"> • Crew blacking out to 30m in 10m increments • Patrol, and monitor all fire edges, focusing on prescribed burn in Zulu 1 and Eder and Cuthill roads • Protection of identified structures and assets including cell phone towers, dairy farms and structures in Drons Rd, Teapot Valley, Pigeon Valley and Mill. • Create and strengthen firebreaks – focusing on Heines and Foxes Rd. New breaks on Golf Rd linkages • RPA/UAV/Drone hotspot and perimeter surveys in Pigeon, Atawhai and Rabbit Island if time allows 		
5. Prepared by: ██████████	Date/Time: 12/2/19 1400hrs	

1. Incident Name	2. Operational Period Date 12&13/2/2019 Time 1900 – 0700	ORGANISATION ASSIGNMENT RF203	
3. Incident Control Incident Controller [REDACTED] (NIMT) (Emergency) Deputy IC [REDACTED] Safety Officer [REDACTED] [REDACTED] (NIMT) (Emergency)		[REDACTED]	Last Date on Fire 18/2/19 18/2/19 18/2/19
4. Agency Representative - Emergency contacts Lead Agency [REDACTED] FENZ Agency Police [REDACTED] Agency CDEM [REDACTED] Agency CDEM Duty Phone Agency FENZ Urban Liason		Phone [REDACTED]	Last Date on Fire 15/2/19 17/2/19
5. Planning/Intell Section - Emergency contacts Planning/Intell Manager [REDACTED] Situations Unit [REDACTED] Resources Unit [REDACTED]		Phone [REDACTED]	Last Date on Fire 18/2/19 18/2/19 13/2/19
6. Logistics Section - Emergency contacts Logistics Manager [REDACTED] (NIMT)		Phone [REDACTED]	Last Date on Fire 20/2/19
7. Operations Section Operations Manager [REDACTED] Deputy Operations Manager [REDACTED] Division Alpha Commander [REDACTED] Division Xray Commander [REDACTED] Division Yankee Commander [REDACTED] Division Zulu Commander [REDACTED] Division Atawhai Commander [REDACTED] Air Division – Drone [REDACTED] Air Division Commander [REDACTED]		Phone [REDACTED]	Last Date on Fire 16/2/19
8. Prepared by: [REDACTED]		Date/Time: 12/2/19 1800hrs	

10. INCIDENT CONTROL STRUCTURE



1. Incident Name Pigeon Valley		2. Operational Period Date 12&13/2/2019 Time 1900 – 0700		DIVISION ASSIGNMENT RF204a	
3. Division Alpha		4. Description Point of ignition to Dove Saddle on Eder Rd			
5. Division Commander	Affiliation	Phone	Radio Ch		
██████████		██████████			
6. Resources Assigned this Period					
<i>Sector</i>	<i>Supervisor</i>	<i>Crews</i>	<i>Last Date on Fire</i>		
NFM 10px Crew					
Thermal Imaging crew 2px					
Taylor's Excavator1					
Taylor's Excavator1					
Taylor's Dozer1					
Taylor's Dozer2					
Taylor's Tanker1					
Taylor's Tanker 2					
7. Division Assignment/Special Instructions					
<ul style="list-style-type: none"> • A1 Patrol/protect structures. Keep mobile resources for immediate response, hotspotting as per map. Blackout to 10m from Zulu1/Alpha1 boundary towards Forestry rd • A2 Blackout to 10m from Forestry Rd towards Alpha2/Xray1 boundary <p>Alpha 1 - Div break to Ford on Sharps Rd Alpha 2 – From ford on Sharps rd to Cuthill Johnsons Rd intersection (updated Div break)</p>					
8. Division Communications			<i>Phone</i>	<i>Radio Ch</i>	
Operations Manager	██████████		██████████		
10. Prepared By: ██████████			Date/Time 12/2/19 1700hrs		

1. Incident Name Pigeon Valley		2. Operational Period Date 12&13/2/2019 Time 1900 – 0700		DIVISION ASSIGNMENT RF204a	
3. Division Xray		4. Description Division from Cut hill Johnsons Rd to CHH saw mill			
5. Division Commander	Affiliation	Phone	Radio Ch		
██████████					
6. Resources Assigned this Period					
Sector	Supervisor	Crews	Last Date on Fire		
Buck Forestry 4px	██████████ ██████████				
NFM3 4px					
2x 4x4 Tankers NFL01, NFL02					
5475 Rural Appliance					
Appleby Tanker					
Brightwater 5071 – Rural Appliance					
RD JD850 Dozer					
Feller Buncher					
Thermal Imaging crew 2px					
7. Division Assignment/Special Instructions					
<p>Xray 1 -Continue widening containment line – felling machine -Patrol and protect structures. Keep mobile resources for immediate response. Hotspotting as per map. -blackout to 30m from Alpha2/Xray1 boundary towards Red Stag Lane Xray 2&3 blackout to 30m Red Stag Lane to Yankee 2 Boundary</p> <p>Xray 1 – Cuthill/Johnsons Red intersection (new Div break) to 5423000/1603000 Xray 2 - 5423000/1603000 to intersection of Redwood Valley Rd and Red Stage lane Xray 3 - Redwood Valley Rd and Red Stage lane to Yankee div break</p>					
8. Division Communications		Phone	Radio Ch		
Operations Manager ██████████		██████████			
11. Prepared By: ██████████		Date/Time 12/2/19 1700hrs			

1. Incident Name Pigeon Valley		2. Operational Period Date 12&13/2/2019 Time 1900 – 0700		DIVISION ASSIGNMENT RF204a	
3. Division Yankee		4. Description Bennets Road to CHH saw mill at Eves Valley			
5. Division Commander	Affiliation	Phone	Radio Ch		
FENZ Urban Exec Officier					
6. Resources Assigned this Period					
Sector	Supervisor	Crews	Last Date on Fire		
Mt Lyford 4wd Appliance					
Excavator					
Dozer					
Feller buncher					
Thermal image crew 2px					
7. Division Assignment/Special Instructions					
Patrol and protect structures. Keep mobile resources for immediate response. Hotspotting as per map. Concentrate on clearing hotspots on Eder rd as per hotspot map (2x Crews) Blackout to 10m perimeter from Xray/Yankee boundary heading south towards Yankee/Zulu2 boundary					
Yankee 1 – South edge of mill to div break at Zulu Yankee 2 – Xray div break to south edge of the mill					
8. Division Communications			Phone	Radio Ch	
Operations Manager [REDACTED]			[REDACTED]		
12. Prepared By: [REDACTED]			Date/Time 12/2/19 1700hrs		

Released under the Official Information Act

1. Incident Name Pigeon Valley		2. Operational Period Date 12&13/2/2019 Time 1900 – 0700		DIVISION ASSIGNMENT <small>RF204a</small>	
3. Division Zulu		4. Description Point of ignition to CHH saw mill			
5. Division Commander	<i>Affiliation</i>	<i>Phone</i>	<i>Radio Ch</i>		
██████████		██████████	Last Day 16/2/19		
6. Resources Assigned this Period					
<i>Sector</i>		<i>Supervisor</i>		<i>Crews</i>	<i>Last Date on Fire</i>
Mitchell Silviculture 6px		██████████ ██████████			16/2/19
██████ Bears smoke Chaser					
Marahau Smoke chaser					
Rural Appliance 5075					
Thermal image crew 2px					
7. Division Assignment/Special Instructions					
Patrol/protect structures. Keep mobile resources for immediate response. hotspotting as per map. Zulu1 Blackout to 30m from Alpha1/Zulu1 boundary heading east					
Zulu2 Blackout to 30m from Yankee1/Zulu2 boundary heading south					
Zulu 1 – Alpha div break to Barton Lane Zulu 2 – Barton lane to Yankee div break.					
8. Division Communications				<i>Phone</i>	<i>Radio Ch</i>
Operations Manager ██████████				██████████	
13. Prepared By: ██████████				Date/Time 12/2/19 1700hrs	

Released under the Official Information Act

1. Incident Name Pigeon Valley		2. Operational Period Date 12&13/2/2019 Time 1900 – 0700		DIVISION ASSIGNMENT RF204a	
3. Division Atawhai		4. Description			
5. Division Commander	<i>Affiliation</i>	<i>Phone</i>		<i>Radio Ch</i>	
6. Resources Assigned this Period					
<i>Sector</i>		<i>Supervisor</i>		<i>Crews</i>	
				Last Date on Fire	
Night					
None					
7. Division Assignment/Special Instructions Continue mopping up identified hotspots as per hotspot map.					
8. Division Communications				<i>Phone</i>	
Operations Manager. [REDACTED]				<i>Radio Ch</i>	
14. Prepared By: [REDACTED]				Date/Time 12/2/19 1700hrs	

Released under the Official Information Act

1. Incident Name Pigeon Valley		2. Operational Period Date 12&13/2/2019 Time 1900 – 0700		DIVISION ASSIGNMENT RF204a	
3. Division Structure protection		4. Description			
5. Division Commander	Affiliation	Phone		Radio Ch	
6. Resources Assigned this Period					
<i>Sector</i>		<i>Supervisor</i>		<i>Crews</i>	
				Last Date on Fire	
Executive Officer		██████████			
Nelson 212 4px					
Nelson 213 4px					
Newlands 291 4px					
Wainuiomata 441 4px					
7. Division Assignment/Special Instructions					
<ul style="list-style-type: none"> • The Structure protection appliances will be manned by 2x 12hrs shift crews which FENZ is rotating and managing fatigue levels for • The above structure protection crews will be assigned to Divisions by the Operations Manager on a shift basis. • They will report to the Division Commander. • They are “on-call” for structure protection incidents at or in the vicinity of the Pigeon Valley Fire. 					
8. Division Communications					
Operations Manager		██████████		Phone	
Air Division Commander		██████████		Radio Ch	
				Fire 1/Cellphone	
				Fire 4/Cellphone	
15. Prepared By: ██████████				Date/Time 12/2/19 1430hrs	

1. Incident Name Pigeon Valley		2. Operational Period Date 12&13/2/2019 Time 1900 – 0700			AIR OPERATIONS PLAN RF208	
3. Personnel and Communications						
Position	Name	Affiliation	Phone	Radio Chan		
Air Div Commander	[REDACTED]					
Air Division – Drone	[REDACTED]					
	[REDACTED]					
	[REDACTED]					
	[REDACTED]					
4. Air Resource Assignments						
Pilot Name/ Company	Aircraft Type	Reg or Call sign	Assign- ment	Tactical Freq/Chan	Name	Telephone Numbers
Interpine 2px	RPAS / UAV	PINES1		Fire 4	[REDACTED]	
Interpine 2px	RPAS / UAV	PINES2		Fire 4	[REDACTED]	
USAR 3px	RPAS / UAV	Romeo1		Fire 4	[REDACTED]	
USAR 3px	RPAS / UAV	Romeo2		Fire 4	[REDACTED]	
5. Location of Filling Points/Service Areas						
Name			Grid Reference			
Heli base			-41.31777, 137.10987			
Fixed wing			41 22 39.9 S 173 05 04.6 E			
6. Safety Notes / Hazards / Radio Coverage Limitations						
7. Air Operations Special Equip or Service						
Drone operations						
<ol style="list-style-type: none"> 1. Full perimeter survey of containment to 30m Following priority order Eves Valley Mill, Xray, Yankee, Zulu, Alpha, Rabbit Island 2. Atawhai – Full hotspot survey and aerial map before sunset 3. Observation platform for Zulu overnight 						
8. Prepared By: [REDACTED]				Date/Time: 12/2/19 1700hrs		

Released under the Information Act

1. Incident Name Pigeon Valley		2. Operational Period Date 12&13/2/2019 Time 1900 – 0700		COMMUNICATIONS PLAN RF205	
3. Radio Channels					
Assigned To	Function	Channel	Frequency	System	
Command		Waimea 1	152.55000 RX 154.33125 TX		
Division Alpha	Operational	Fire 1	143.82500		
Division Zulu	Operational	Fire 2	143.78750		
Division Yankie	Operational	Fire 3	140.92500		
Division Xray	Operational	Fire 1	143.82500		
Division Bravo	Operational	Fire 2	143.78750		
Air Ops -Heli	Operational	Fire 4	140.61250		
Air Ops – Fixed Wing	Operational	Fire 10	140.98750		
Emergency		Waimea 1	152.55000 RX 154.33125 TX		
Resources		Waimea 1	152.55000 RX 154.33125 TX		
FireCom		FireCom			
2 Hourly - Sitrep		OPSR2	Use mobile if difficult coms to FCP		
4. Telephone					
Assigned To	Landline	Cell phone	Fax	Comments	
Emergency		111			
Regional Command Centre (RCC)					
6. Other (e.g. email, Satphone, etc)					
Resources	resources@FENZNelsonIMT.com				
Safety	safety@FENZNelsonIMT.com				
Logistics	logistics@FENZNelsonIMT.com				
PIM	pim@FENZNelsonIMT.com				
Planning	planning@FENZNelsonIMT.com				
Forward Control Point (FCP)	icu.nelson@fireemergency.nz		[REDACTED]		
Situation / GIS / Intel	situation@FENZNelsonIMT.com				
Operations	operations@FENZNelsonIMT.com				
Photos and imagery	Join Facebook site; Pigeon Valley Fire - INTERNAL COMMS		https://www.facebook.com/groups/1924082991035550/		
6. Prepared by: [REDACTED]				Date/Time 11/2/19 1900hrs	

1. Incident Name Pigeon Valley	2. Operational Period Date 12&13/2/2019 Time 1900 – 0700	SAFETY PLAN RF209
--	---	-----------------------------

3. General Safety Points

Ensure regular rest periods and hydrate often with water and electrolytes

Everyone is to be signed in and out of the fire ground through the Incident Control Point for both safety check and payment records (Complete DTR's).

Maintain regular situation reports especially kestrel observations (containing all relevant information) via line supervisors.

Drivers must obey all speed limits – no exception on forestry tracks.
Remember vehicles must be able to stop in half the visible distance

LACES	Fire Orders	Watchouts
L - Lookout(s) A – Awareness – Anchor Point(s) C – Communication(s) E – Escape Route(s) S – Safety Zone(s)	1. conditions and forecasts 2. Know what your fire is doing at all times. 3. Base all actions on current and expected fire behaviour of the fire. 4. Identify escape routes and safety zones and make them known. 5. Post lookouts when there is possible danger. 6. Stay alert. Keep calm, Think clearly, act decisively. 7. Maintain prompt communication with your crew/s, your supervisor and adjoining crews. 8. Give clear instructions and ensure they are understood. 9. Maintain control of your crew/s at all times. 10. Fight fire aggressively having provided for safety first.	1. Fire size is unknown (no size up). 2. Unfamiliar territory 3. Safety zones and escape routes not identified. 4. Unfamiliar with weather and local factors influencing fire behaviour. 5. No communications link with crew members or supervisor. 6. Instructions and assignments not clear. 7. Weather is getting hotter, drier and relative humidity dropping 8. Wind increases and/or changes direction. 9. Getting frequent spot fires across the line 10. Working uphill or down wind of a fire 11. Working on a steep slope 12. Working in rugged terrain 13. Can't see main fire 14. In unburnt vegetation 15. Walking through hot ashes 16. Working alone 17. Getting tired 18. Working near power lines 19. Working near machinery 20. Working with aircraft 21. Working around trees or spars

Released Under the Official Information Act

4. Specific Safety Points

- All access points into fire are controlled. Only those authorized to enter and they must receive a briefing and be logged including time and point of access
- Public access managed by cordons
- Weather fire behaviour monitored for changes and communicated to crews. Use kestrels to gather weather data. Risk identified to crews.
- All crews to have adequate food, water, PPE to manage fatigue and hydration.
- Crew Leaders and Supervisors to monitor crews for fatigue. Work rest periods enforced. Seek shade during rest period.
- Ensure nine-hour rest periods before returning to fire ground.
- Crews to have identified emergency escape routes and emergency plan in the event of harm. Meeting at pre-identified evacuation point once evacuated.
- All workers to ensure they are competent for the tasks and risks given.
- Air and ground crews to be isolated from risk areas during operations.
- Potential methane flares (Division Yankee) from Eves Valley Landfill. Avoid if possible.
- Avoid skid sites where stability of surface cannot be assured.
- Particular care in smoke, work in smoke and traveling in smoke.
- Ensure operational separation from Air-ops at forward command post
- Follow carpark signage at Forward command post
- Report all incidents and near misses to safety officer.
- Be sun smart, use hats and cover completely.
- Drive carefully in the vicinity of the Brightwater community
- Driver are to obey speed limits at all times
- Ensure under garments are flame resistant
- Forestry tracks & road speed 20 km/hr. Use beacons/ lights etc. Not response speed!
- Seat belts must be worn at all times
- Big trees with root plates compromised
- Ensure safe distance from felling machines (2 tree lengths ~ 80m minimum)
- Dangerous tree assessors – Ensure all crew members are competent and equipped for task (including PPE).
- Respiratory protection- P2 Mask to be worn when working in dusty and smoky environments
- Terrain – keep off steep faces, stay above felled trees
- Plastic bags are available at FCP to transport dirty PPE
- Be aware with winds increasing and gusting – trees may have their roots compromised and blow over. Remember to stay 2 tree lengths away from suspect trees. Communicate suspect trees to dangerous tree assessment crews.

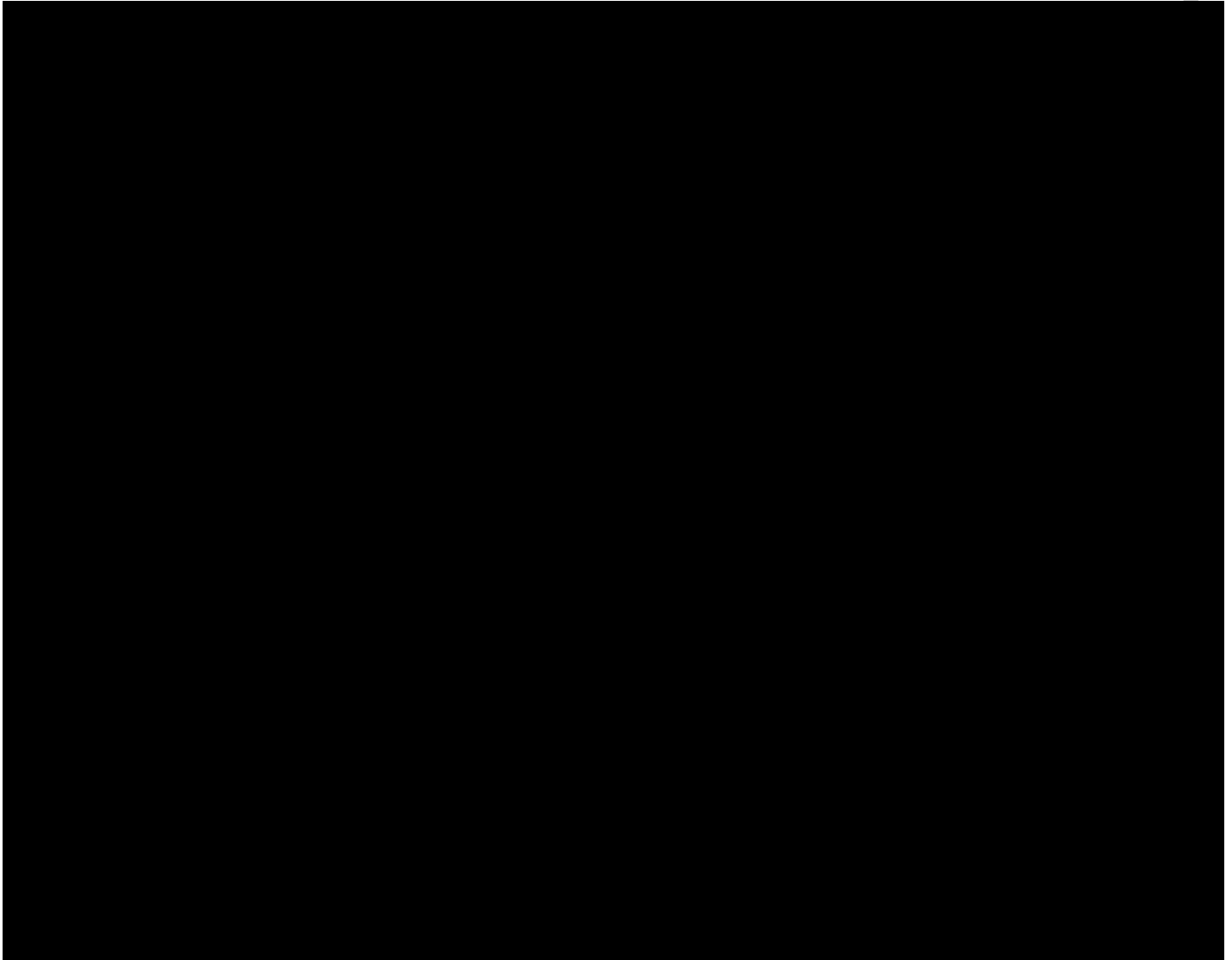
5. Prepared By: [REDACTED]

Date/Time 12/2/19 1200hrs

1. Incident Name Pigeon Valley		2. Operational Period Date 11&12/2/2019 Time 1900 – 0700		MEDICAL PLAN RF206				
3. First Aid Station <i>Name</i>		<i>Location</i>		<i>Phone/Radio Channel</i>		<i>Paramedics available at Station</i>		
Each Crew must have available one First aid Level 1 Certified		Each crew						
Nelson 91 Ambulance		Forward command post		Waimea 1		1 Paramedic and 1 EMT		
4. Transportation <i>Ambulance Service</i>		<i>Address</i>		<i>Phone/Radio Channel</i>		<i>Paramedics available with Ambulance</i>		
Ambulance St Johns		Closest unit		111		Yes		
5. Hospitals <i>Hospital Name</i>		<i>Address</i>		<i>Phone</i>		<i>Travel Time</i>	<i>Burn Unit</i>	<i>Heli Pad</i>
						<i>Road</i>	<i>Air</i>	
Nelson Public Emergency		Waimea Rd.		111		27m	4min	y
Hutt Hospital (Burn Unit)				111		n/a	40min	Y
6. Special Emergency Procedures								
St John will transport patients to whichever health facility is appropriate								
7. Prepared By: ██████████ Shift - Manager Nelson				Date/Time 11/2/19 1900hrs				
8. Reviewed by Safety Advisor: ██████████				Date/Time 12/19 1200hrs				

1. Incident Name Pigeon Valley	2. Operational Period Date 13/2/2019 Time 0700 - 1900	MAPS RF
3. Download Avenza Maps app on iOS and Android, Scan the Following Codes to Access Digital Maps you can navigate with. These codes generally do no change, therefore to get tomorrow's map you can scan the old map code. Present a smartphone camera to see these codes or scan using QR code reader app.		

QR CODES FOR MAP DOWNLOAD



Released

Act

1. Incident Name

Pigeon Valley Fire, Nelson

Date 12&13/2/2019

Time 1900 – 0700

Public Information Management Plan

Overview of PIM response

The NIMT PIM team is working to support the Nelson Tasman Civil Defence PIM team. It is essential that the information coming in from the fire ground (with regards to FENZ operations) is collated by the NIMT Situation Unit and shared to the Civil Defence IMT - this is done through the PIM teams working collaboratively and assists in timely, accurate and relevant information to all stakeholders involved.

The overall PIM team is increasing personnel numbers.

NIMT PIM team – for Tuesday 12th February

PIM FENZ Manager – [REDACTED]
Media Officer – [REDACTED]
PIM Support – [REDACTED]
Social Media Manager, Community Liaison, Evac/Alerts – Civil Defence

The **PIM Team roster** is available from NIMT Logistics Manager.

PIM meetings:

Ops Briefing	0700hrs
Media Briefing #1	0830hrs
Planning Meeting #1	0900hrs
Tactics Meeting	1030hrs
Media Briefing #2	1530hrs
Planning Meeting #2	1700hrs

Key Messages:

- **Attn Cordons:** Media should only be allowed access to cordoned areas and restricted sites **if approved** and accompanied by a member of the PIM Team. Please be diligent with allowing people through.
- Evacuations are still in place, for more information, go to www.nelsontasmancivildefence.co.nz
- Evacuated residents should check in at the Civil Defence Welfare Centre located at t/new Life Church, Richmond, or call the Civil Defence Welfare helpline - 03 543 8400
- Media should contact the Media Officer for specific event information and media stand-up information.
- Fire safety messages are: Stay away from the area and follow authorities' instructions. Also help protect your property by creating a 'defensible zone' – Use compost, mulch and remove any section or yard waste materials. Total fire ban and machinery ban still in place.
- Donated items should be sealed, long-life foods and drink, drop off at Nelson Tasman District Council Office.

FENZ Stakeholders and Audience Groups

Organisation	Detail	Name	Contact Info
FENZ Org (forward system to ELT, NCC, OCE and Board)	Requires regular updates – committed to 3x updates daily at 0830hrs, 1400hrs, 1900hrs. Additionally a phone call every hour	RCC Christchurch	RCC R4 & R2, NCC, [REDACTED] [REDACTED] [REDACTED], Nelson Tasman CD Planning & Intel, NIMT Situation Unit, Comms Team
Evacuated Residents	Community Meeting – one was held at 11am today with Iwi	Various	Comms through social media, Civil Defence website, welfare team and media.
Interested Public	Local community (not evacuated) and wider	Various	Social media posts, Civil Defence website, FENZ website, media outlets
Cordons	Managed by Police, kept updated via PIM team		Police Liaison in IMT
IMT and Support Staff	Information to help their roles	*See structure charts	Briefings, meetings, conversations between the teams, Sit Reps
Media Outlets	Require full-time management and contact	*See media list	

Direct message distribution	Details of the specific sites or types
Websites	Nelson Tasman Civil Defence - http://www.nelontasmancivildefence.co.nz/ Fire and Emergency NZ www.fireandemergency.nz
Social media	Main channel is: Nelson Tasman Civil Defence facebook page Fire and Emergency NZ facebook page Tasman-Malborough Fire Area facebook page
Helpline	Welfare Helpline – 03 543 8400
Information points	Cordons (located as per map)
Community contacts/meetings	Community Meeting Monday 11 th February – details TBC.
Media Outlets	Specific stations or publications
Radio	*See media list
TV	
Newspapers	
Media	Schedule
Media briefing/conferences	Media Stand Up at 0830hrs. Media Stand Up at 1530hrs. 2 hourly Media Releases

Media site visits	As required
Interviews	Regular interviews with FENZ personnel
Message monitoring	
Messaging is being monitored by Civil Defence PIM Team and dealt with / passed on accordingly. FENZ PIM team are supporting media management and FENZ / Operational information requiring to be gathered and shared.	

Released under the Official Information Act

